

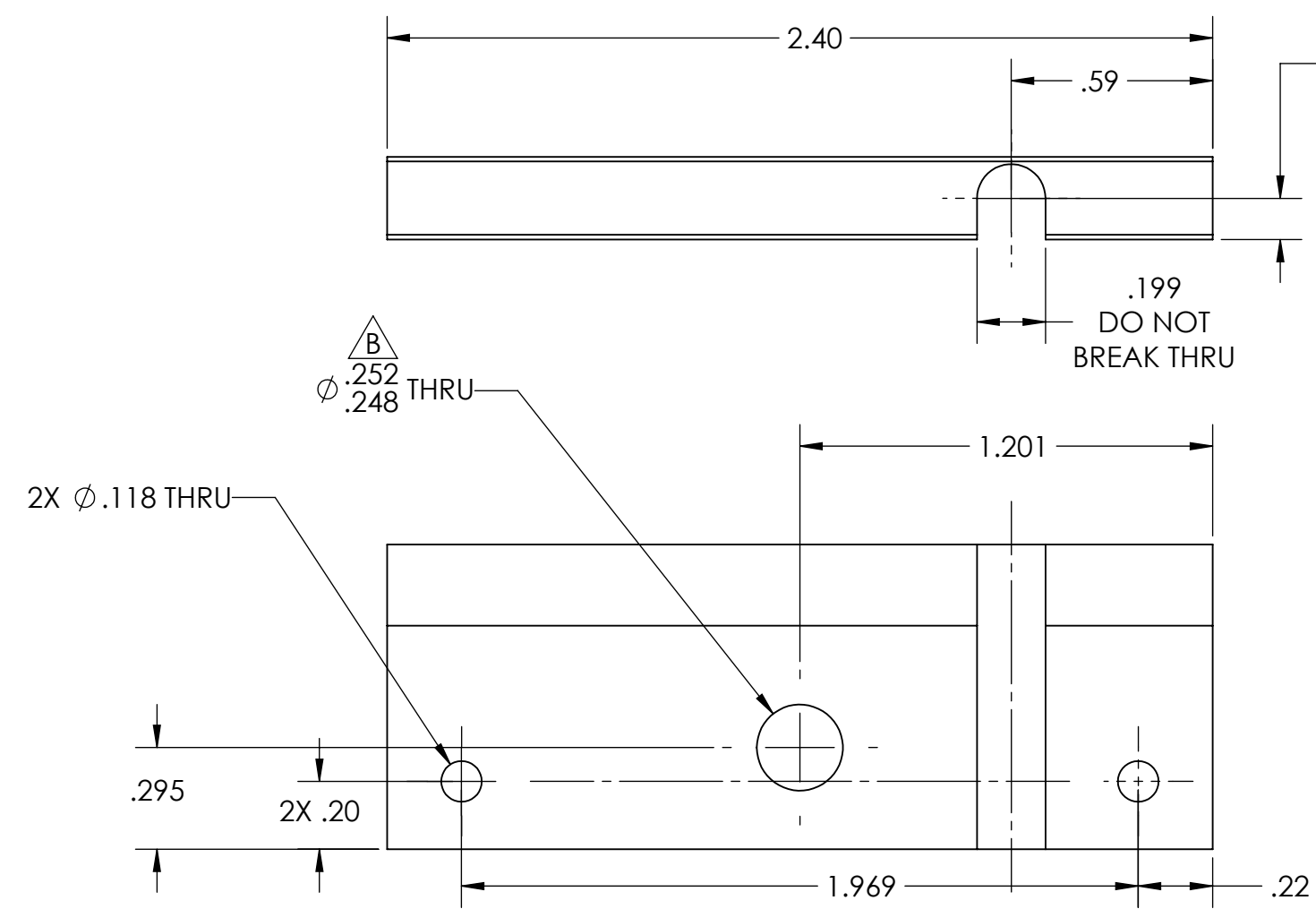
1

2

3

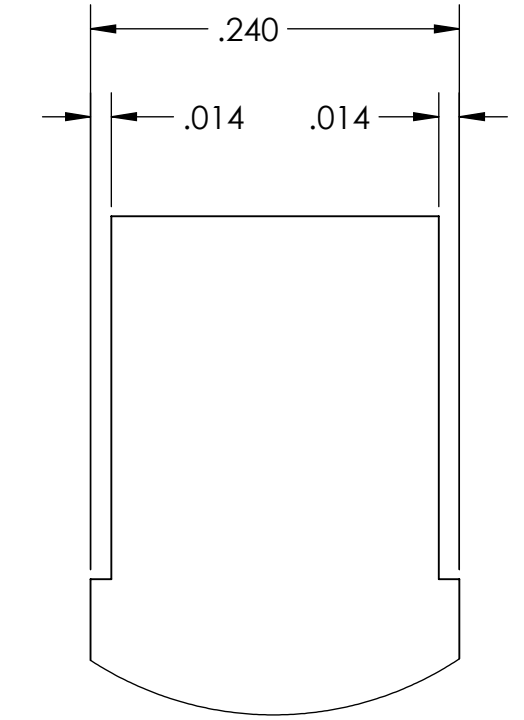
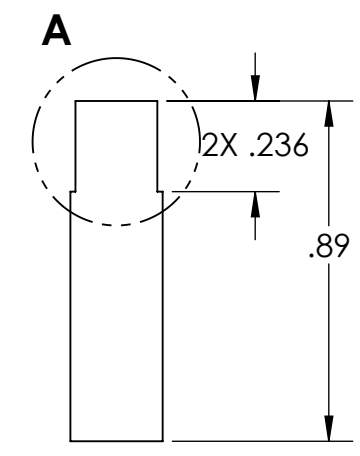
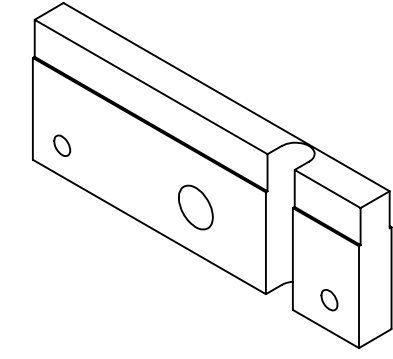
4

REVISIONS				
ZONE	REV.	DESCRIPTION	DATE	APPROVED
	A	INITIAL RELEASE	10/19/2012	J. KELSEY
	B	HOLE TOLERANCE ADDED	10/19/2012	C. VIDAL



.119
DO NOT
BREAK THRU

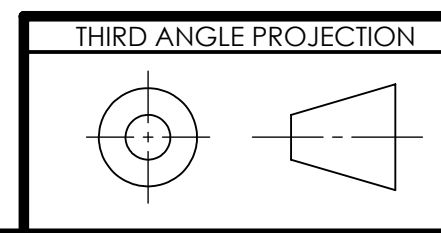
.199
DO NOT
BREAK THRU



- NOTES:**
- 1) REMOVE BURRS AND BREAK ALL SHARP CORNERS R0.03 INCHES MAX OR CHAMFER.
 - 2) ALL PARTS MUST BE CLEANED AND DEGREASED.

**DETAIL A
SCALE 8 : 1**

WEIGHT IN POUNDS.
0.02



MATERIAL: Polyetheretherketone (PEEK)		SHOP NOTES: - DO NOT SCALE DRAWING. - BREAK ALL SHARP EDGES.		MASSACHUSETTS INSTITUTE OF TECHNOLOGY LABORATORY FOR NUCLEAR SCIENCE BATES LINEAR ACCELERATOR CENTER	
APPROVALS:		SURFACE FINISH: ✓ MAXIMUM, ALL MACHINED SURFACES			
ORIGINATOR: J. KELSEY	DATE: 10/19/2012	UNLESS OTHERWISE SPECIFIED, DIMENSIONS ARE IN INCHES. TOLERANCES ARE: FRACTIONS: DECIMALS: ANGLES: ±1/32 : .XX ±.010 : ±1° : .XXX ±.005 :		IST CF ENDCAP WITH FITTED HOLE	
DRAWN BY: C. VIDAL	10/19/2012				
CHECKED BY: C. MORAN	10/19/2012				
APPROVED BY: J. KELSEY	10/19/2012	NEXT ASSEMBLY: IST STAVE	SolidWorks GENERATED DRAWING. FILE LOCATION AND NAME:	SCALE: 2:1	PROJECT #: STAR
				SIZE: B	DRAWING #:
				SHEET #: 1 OF 1	REV: A

1

2

3

4