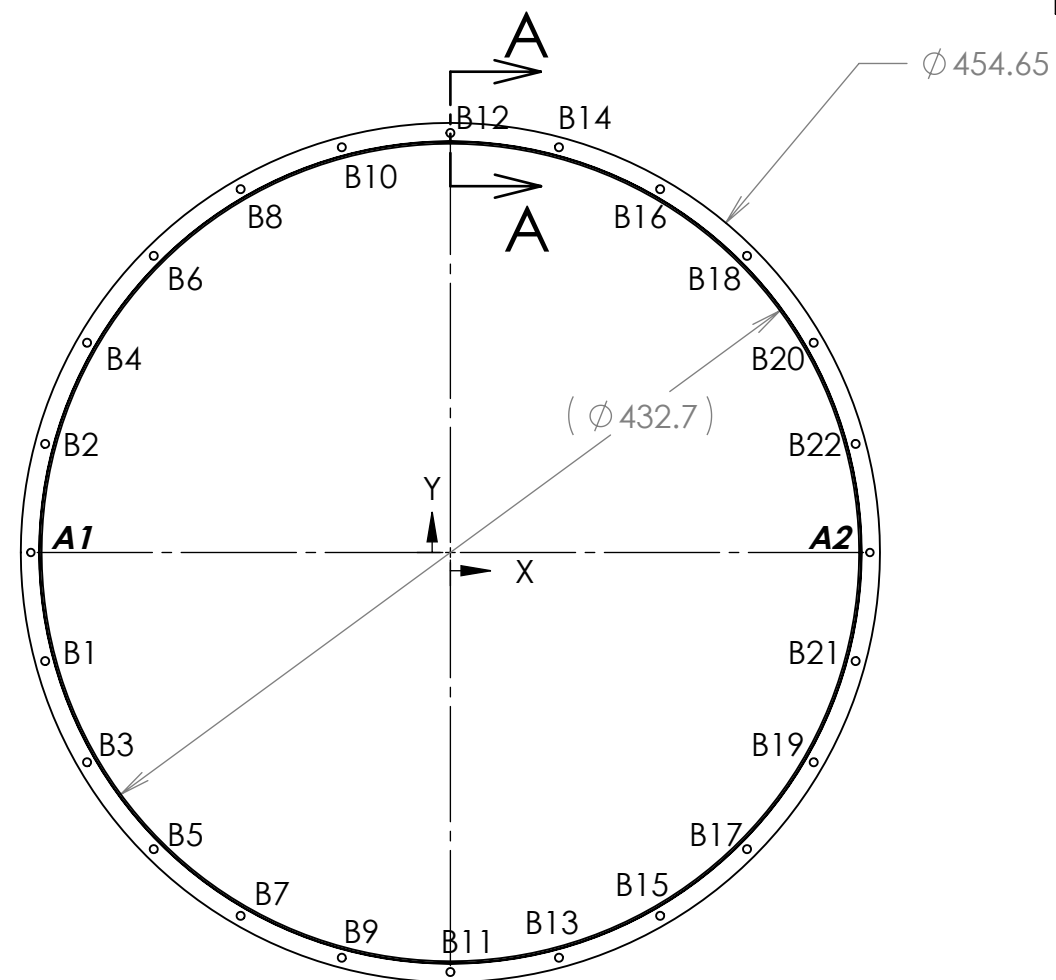
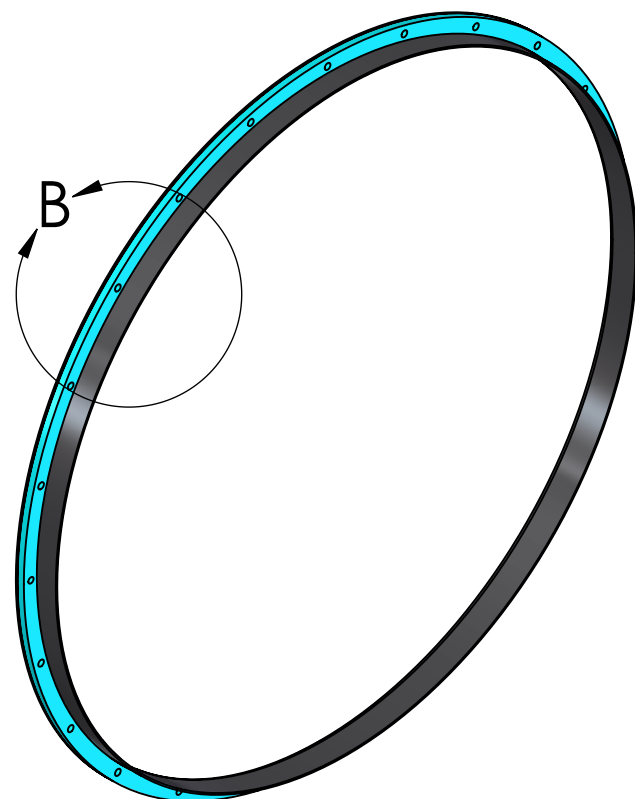
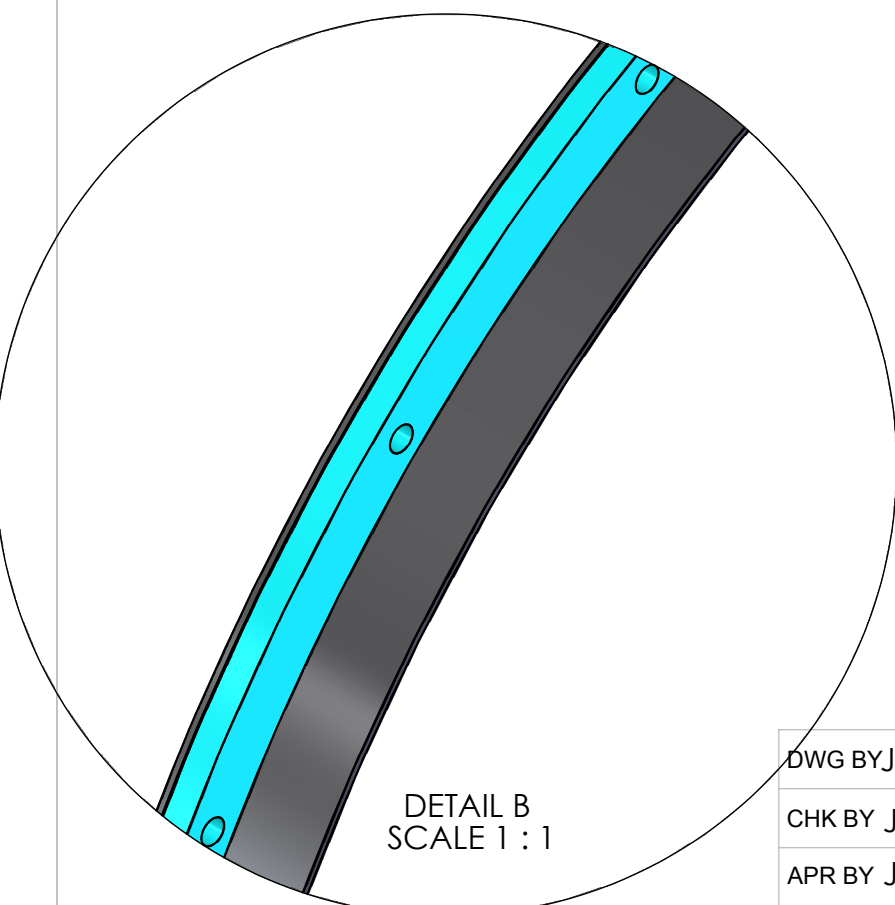
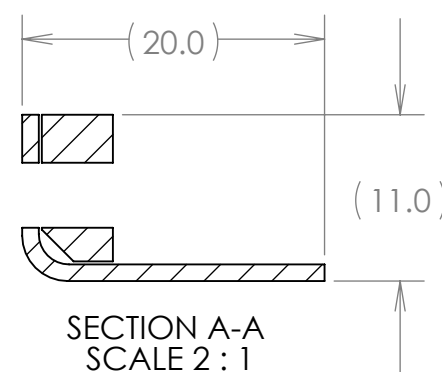


NOTE:
The tags on the two precision holes have been shown in **boldface** to clearly indicate their positions.
Tolerance on dimensions with 4-place decimal (X.XXXX) is ±0.025.

REVISIONS				
REV	DWG	CHK	DATE	DESCRIPTION
0	JHS	JHS	2011-07-18	Initial drawing



TAG	X LOC	Y LOC	SIZE
A1	-222.0000	-0.0000	Ø 4.000 H7/g6 THRU
A2	222.0000	0.0000	
B1	-214.436	-57.458	Ø 4.30 THRU ALL
B2	-214.436	57.458	
B3	-192.258	-111.000	
B4	-192.258	111.000	
B5	-156.978	-156.978	
B6	-156.978	156.978	
B7	-111.000	-192.258	
B8	-111.000	192.258	
B9	-57.458	-214.436	
B10	-57.458	214.436	
B11	0.000	-222.000	
B12	0.000	222.000	
B13	57.458	-214.436	
B14	57.458	214.436	
B15	111.000	-192.258	
B16	111.000	192.258	
B17	156.978	-156.978	
B18	156.978	156.978	
B19	192.258	-111.000	
B20	192.258	111.000	
B21	214.436	-57.458	
B22	214.436	57.458	



MATERIAL Bonded CF Laminate Assembly

SURFACE TREATMENT

DIMENSIONS IN MM. UNLESS OTHERWISE SPECIFIED:

TOLERANCES		
X.X ± 0.5	FRAC.	± 1/64
X.XX ± 0.1	ANGLES	± 1.00°
X.XXX ± 0.05	FINISH	$\sqrt[3.2]{\text{um}}$

THREADS ARE CLASS 2
CHAMFER ENDS OF ALL SCREW THREADS 30°
CUT ROUND, 1.5 THREAD RELIEF ON MACHINED THREADS
BREAK EDGES .016 MAX. ON MACHINED WORK
REMOVE BURRS, WELD SPLATTER & LOOSE SCALE
IN ACCORDANCE WITH ASME Y14.5M & B46.1

ERNEST ORLANDO LAWRENCE
BERKELEY NATIONAL LABORATORY
UNIVERSITY OF CALIFORNIA - BERKELEY

STAR Experiment 2011

IDS Small Flange Assy

DWG BY J.H. Silber	DATE 2011-07-18
CHK BY J.H. Silber	DATE 2011-07-18
APR BY J.H. Silber	DATE 2011-07-18

SER NO.	SCALE: 1:4	SHEET 1 OF 1			
PROJECT NO.	PROJECT NAME	CATEGORY CODE	DWG NO.	SIZE	REV.
				B	0