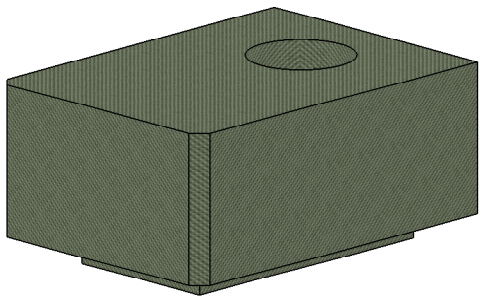
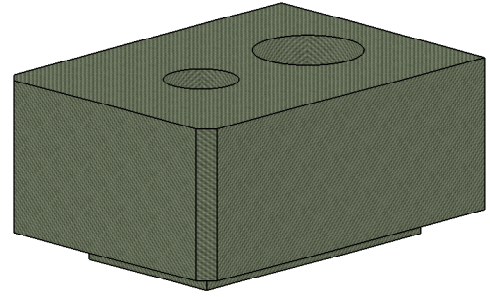


8 7 6 5 4 3 2 1

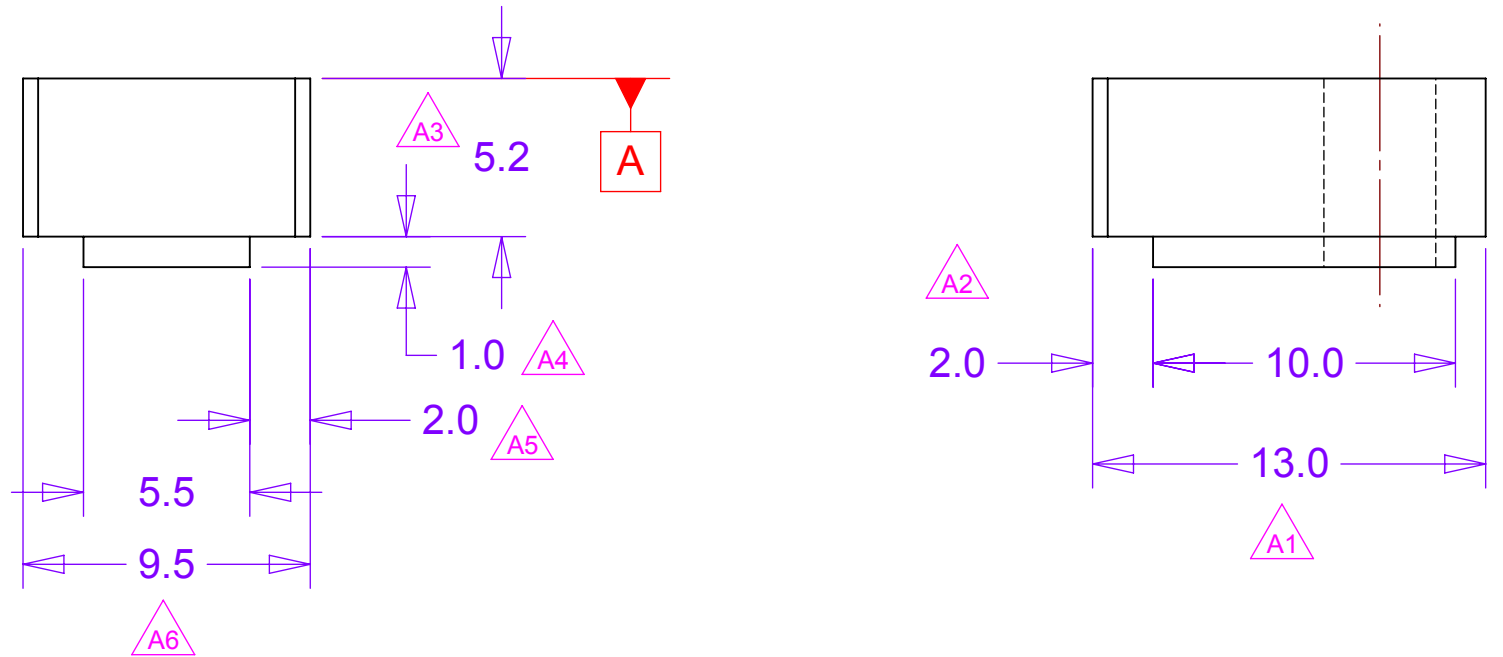
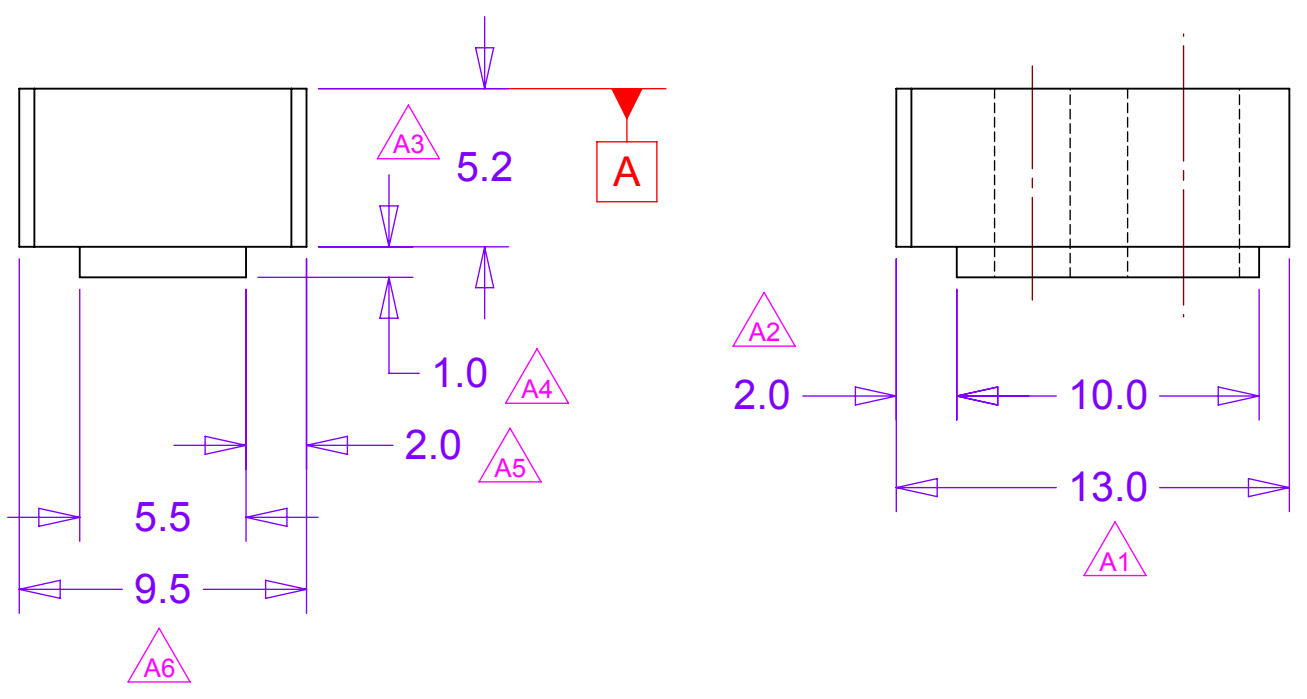
REVISIONS			
REV	DESCRIPTION	DATE	APPROVED
A1	Blocks 1 & 2, 13.0 was 12.0	02/16/10	R Smith
A2	Blocks 1 & 2, 2.0 was 1.0		
A3	Blocks 1 & 2, 5.2 was 0.5		
A4	Blocks 1 & 2, 1.0 was 6.9		
A5	Blocks 1 & 2, 2.0 was 1.0		
A6	Blocks 1 & 2, 9.5 was 7.5		
A7	Blocks 1 & 2, Added .5 X 45 Chamfer		

D



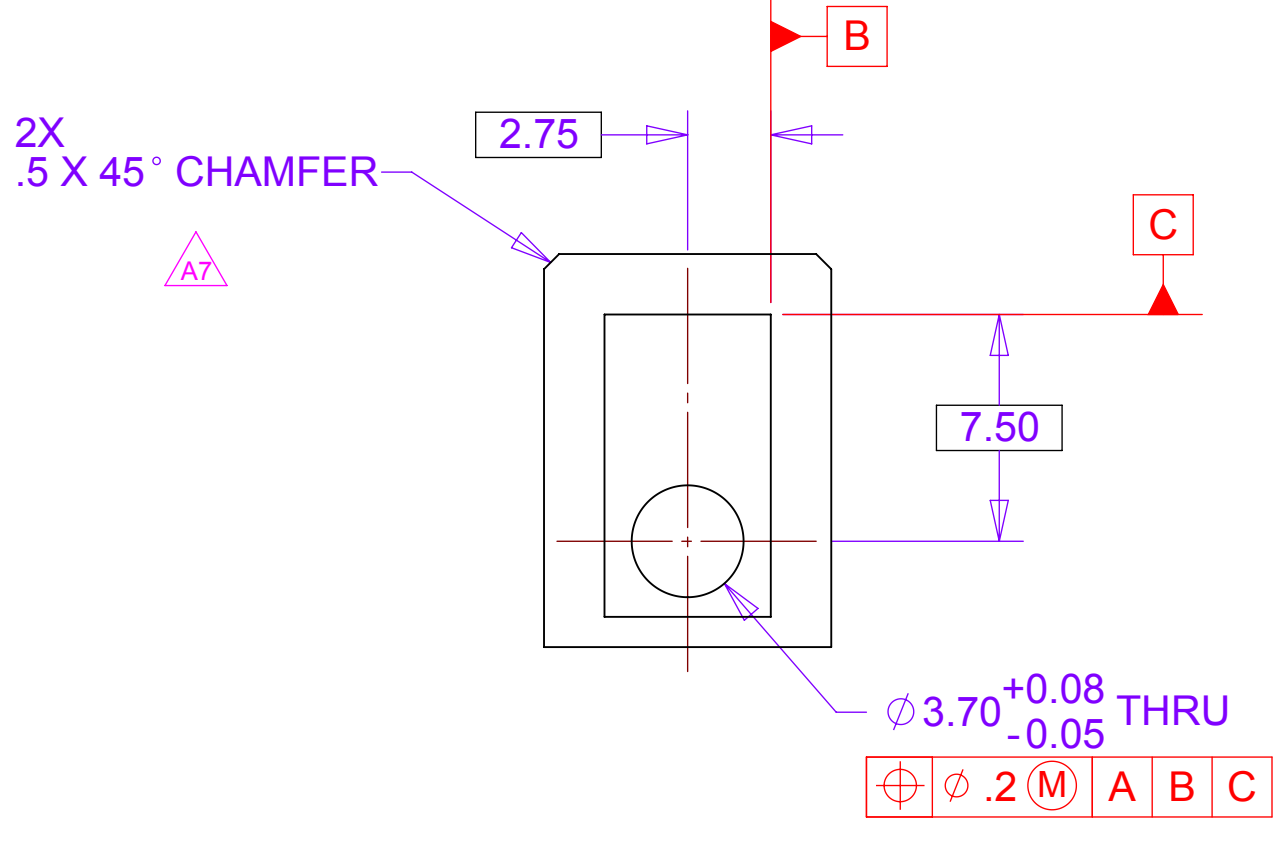
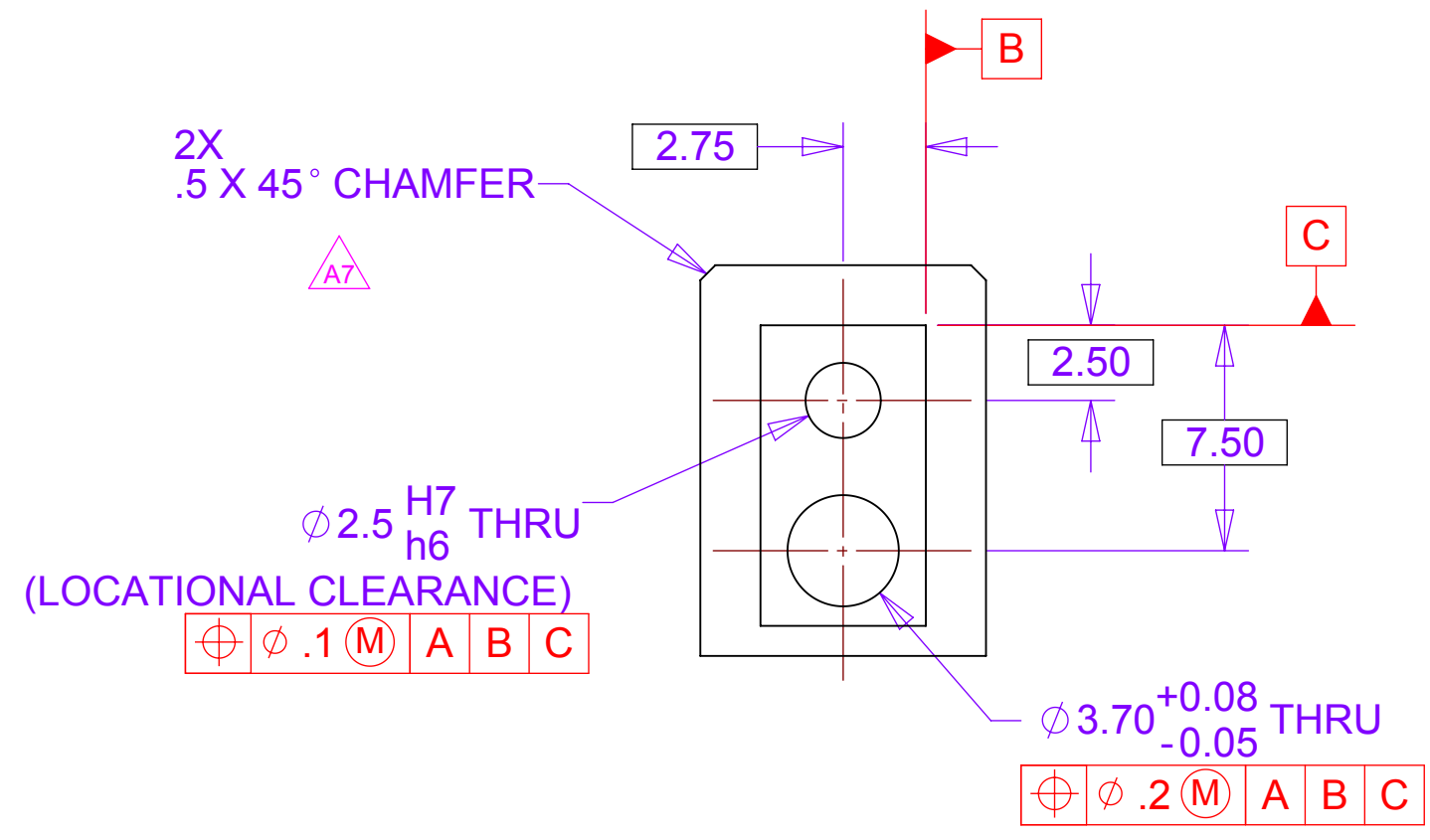
D

C



C

B



B

-1 DISK MOUNTING BLOCK 1

-3 DISK MOUNTING BLOCK 2

Material: CARBON LOADED PEEK

NOTES: UNLESS OTHERWISE SPECIFIED

- ALL DIMENSIONS IN MILLIMETERS
- DIMENSIONS AND TOLERANCING PER ASME Y14.5M-1994
- SURFACE TEXTURE PER ANSI/ASME B 46.1-1985
- REMOVE ALL BURRS AND BREAK SHARP EDGES TO A MAXIMUM OF .4
- ALL INSIDE CORNERS TO BE .4 RADIUS MAX
- COUNTERSINK 82 DEGREES ALL TAPPED HOLES TO MAJOR DIAMETER
- COUNTERSINK 82 DEGREES APPROXIMATELY .08/1.5 DEEP ALL DRILLED HOLES
- PARTS TO BE THOROUGHLY CLEANED TO REMOVE ALL OIL, GREASE, DIRT AND CHIPS
- PART NUMBER (DRAWING NO., DASH NO., REVISION NO., SERIAL NO.) TO BE CLEARLY MARKED ON THE PACKAGING BAG OR PART ITSELF.

A

A

THIS DOCUMENT CONTAINS INFORMATION THAT IS THE PROPRIETARY PROPERTY OF HYTEC, INC. REPRODUCTION, DISCLOSURE, OR RELEASE TO OTHERS, MANUALLY OR ELECTRONICALLY, IS STRICTLY PROHIBITED WITHOUT THE PRIOR WRITTEN CONSENT OF HYTEC, INC.



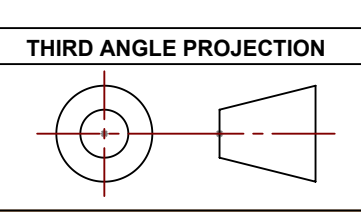
UNLESS OTHERWISE SPECIFIED: DIMENSIONS ARE IN MILLIMETERS -TOLERANCES-

DECIMALS	ANGULAR
X = +/- .5	.X = +/- .30°
.X = +/- .1	.XX = +/- .15°
.XX = +/- .01	
.XXX = +/- .001	SURFACE FINISH = 250

CAD GENERATED DRAWING. DO NOT MANUALLY UPDATE. DO NOT SCALE DRAWING.

HYTEC, INC

TITLE: PHENIX CENTRAL UPGRADE VTX SUPPORT SPACEFRAME DISK MOUNTING BLOCK



FINISH

PART NO. 111-PHX-02-2023-1 & 3

	SIGNATURE	DATE
Designer	Roger L. Smith	7/30/2008
Drawn	Roger L. Smith	7/30/2008
Checked	RJ Ponchione	6/15/2009
Engineer	RJ Ponchione	7/30/2008
Approved	RJ Ponchione	5/15/2009

DWG. NO. 111-PHX-02-2023 D

SCALE 4:1

SHEET NO. 1 of 1

REVISION A

8 7 6 5 4 3 2 1