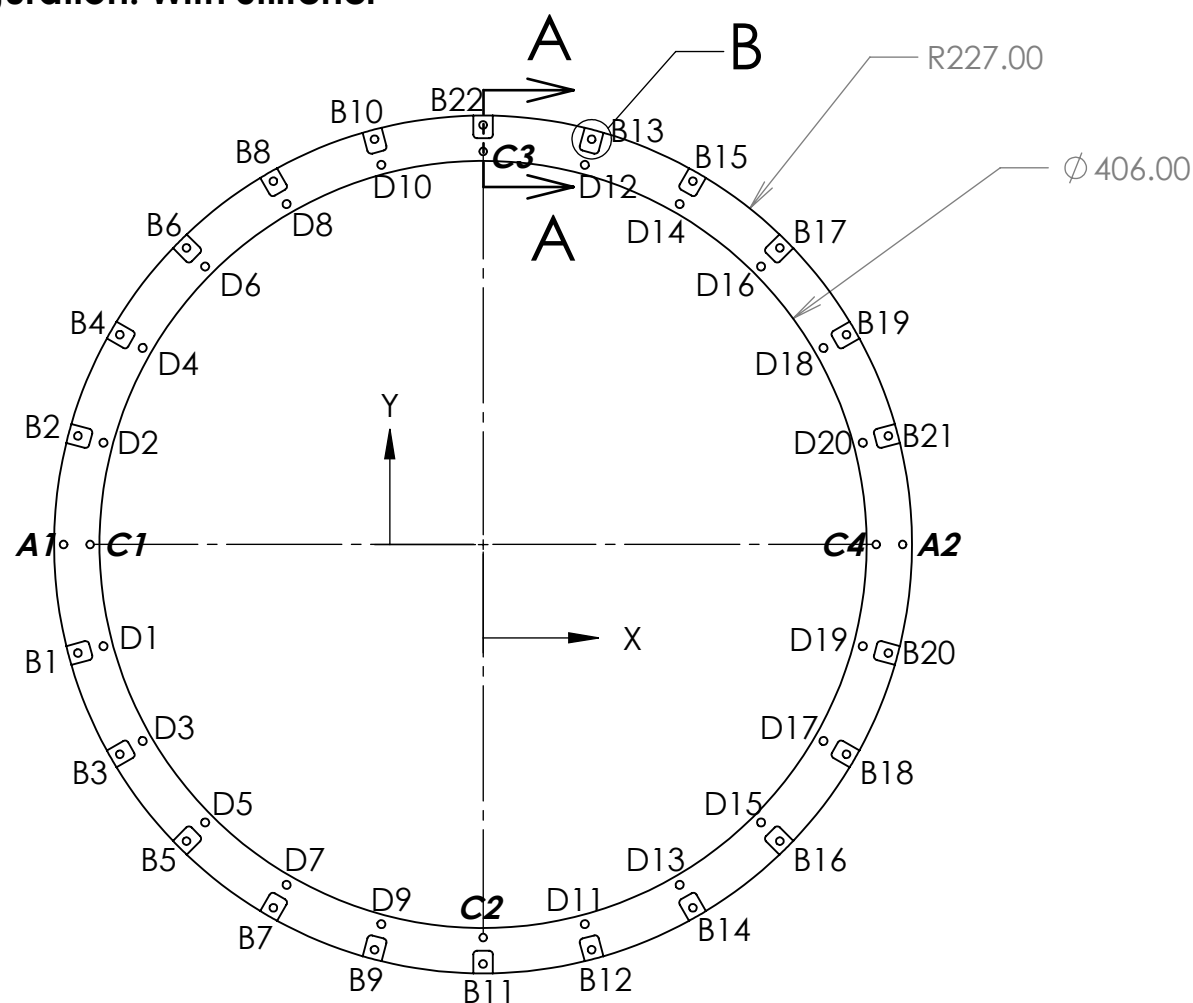


**Configuration: With Stiffener**

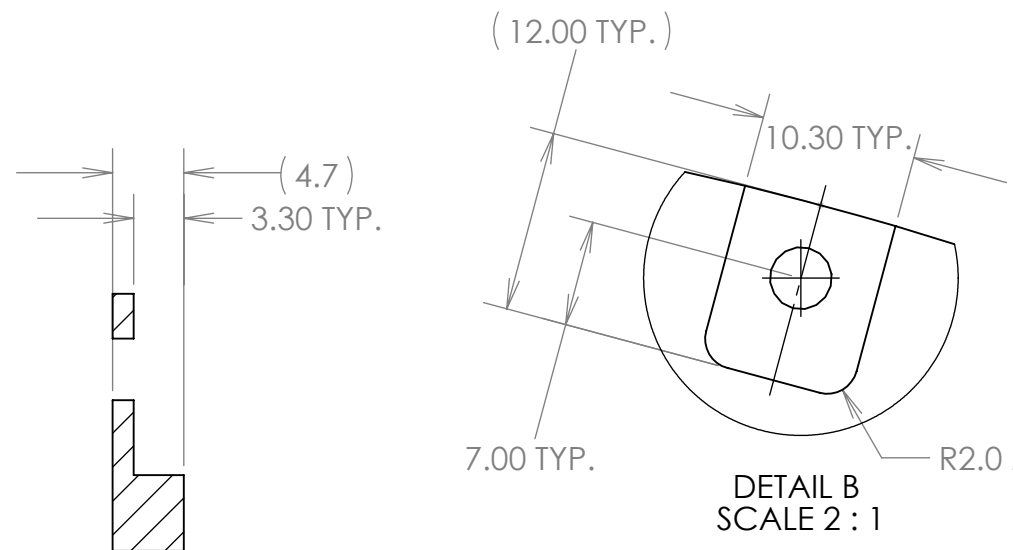
REVISIONS				
REV	DWG	CHK	DATE	DESCRIPTION
0	JHS	JHS	2011-07-14	Initial drawing



TAG	X LOC	Y LOC	SIZE
A1	-222.0000	0.0000	Ø 4.000 H7/g6 THRU
A2	222.0000	-0.0000	
B1	-214.436	-57.458	Ø 4.10 THRU ALL
B2	-214.436	57.458	
B3	-192.258	-111.000	
B4	-192.258	111.000	
B5	-156.978	-156.978	
B6	-156.978	156.978	
B7	-111.000	-192.258	
B8	-111.000	192.258	
B9	-57.458	-214.436	
B10	-57.458	214.436	
B11	0.000	-222.000	
B12	57.458	-214.436	
B13	57.458	214.436	
B14	111.000	-192.258	
B15	111.000	192.258	
B16	156.978	-156.978	
B17	156.978	156.978	
B18	192.258	-111.000	
B19	192.258	111.000	
B20	214.436	-57.458	
B21	214.436	57.458	
B22	0.000	222.000	

TAG	X LOC	Y LOC	SIZE
C1	-208.0000	0.0000	Ø 4.000 H7/g6 THRU
C2	0.0000	-208.0000	
C3	0.0000	208.0000	
C4	208.0000	-0.0000	Ø 4.30 THRU ALL
D1	-200.913	-53.834	
D2	-200.913	53.834	
D3	-180.133	-104.000	
D4	-180.133	104.000	
D5	-147.078	-147.078	
D6	-147.078	147.078	
D7	-104.000	-180.133	
D8	-104.000	180.133	
D9	-53.834	-200.913	
D10	-53.834	200.913	
D11	53.834	-200.913	
D12	53.834	200.913	
D13	104.000	-180.133	
D14	104.000	180.133	
D15	147.078	-147.078	
D16	147.078	147.078	
D17	180.133	-104.000	
D18	180.133	104.000	
D19	200.913	-53.834	
D20	200.913	53.834	

NOTE:  
The tags on the six precision holes have been shown in **boldface** to clearly indicate their positions. Tolerance on dimensions with 4-place decimal (X.XXXX) is ±0.025.



MATERIAL CN60 Carbon Fiber Laminate	
SURFACE TREATMENT	
DIMENSIONS IN MM. UNLESS OTHERWISE SPECIFIED:	
TOLERANCES	
X.X ± 0.5	FRAC. ± 1/64
X.XX ± 0.1	ANGLES ± 1.00°
X.XXX ± 0.05	FINISH $\sqrt[3.2]{\mu\text{m}}$

**ERNEST ORLANDO LAWRENCE BERKELEY NATIONAL LABORATORY**  
UNIVERSITY OF CALIFORNIA - BERKELEY

**IDS**  
**IDS Small Ring**

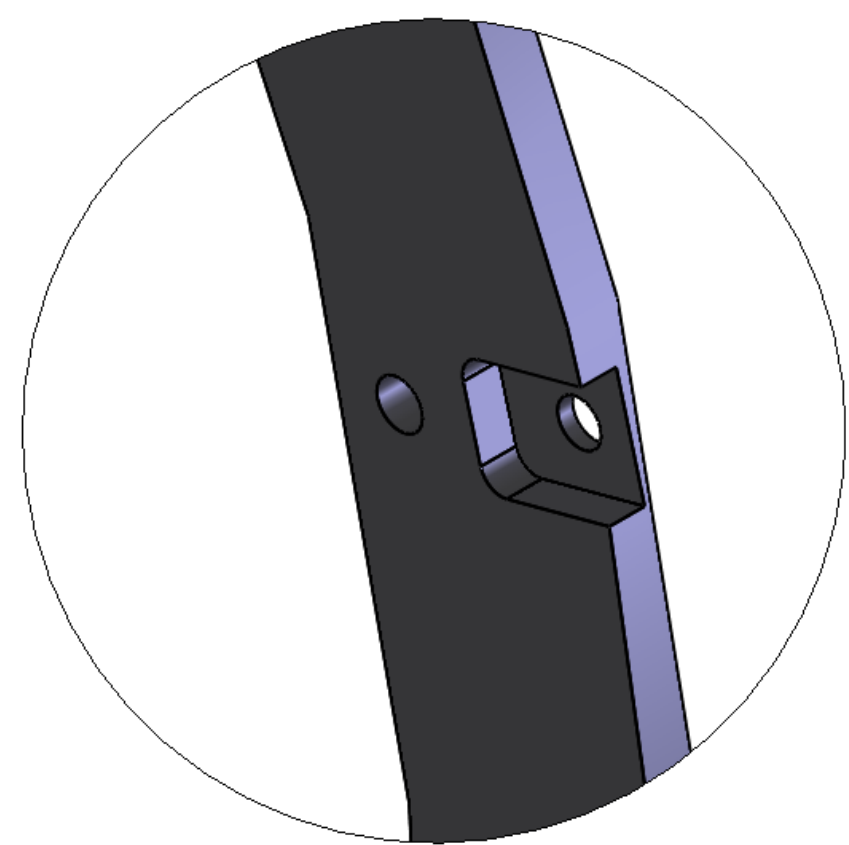
DWG BY J.H. Silber	DATE 2011-07-14
CHK BY J.H. Silber	DATE 2011-07-14
APR BY J.H. Silber	DATE 2011-07-14

THREADS ARE CLASS 2  
CHAMFER ENDS OF ALL SCREW THREADS 30°  
CUT ROUND, 1.5 THREAD RELIEF ON MACHINED THREADS  
BREAK EDGES .016 MAX. ON MACHINED WORK  
REMOVE BURRS, WELD SPLATTER & LOOSE SCALE  
IN ACCORDANCE WITH ASME Y14.5M & B46.1

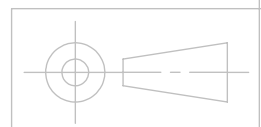
SER NO.	SCALE: <b>1:4</b>	<b>SHEET 1 OF 2</b>		
PROJECT NO.	PROJECT NAME	CATEGORY CODE	DWG NO.	SIZE REV.
				B 0001

SECTION A-A  
SCALE 2 : 1

DETAIL B  
SCALE 2 : 1



DETAIL E  
SCALE 2 : 1



MATERIAL	
SURFACE TREATMENT	
DIMENSIONS IN MM. UNLESS OTHERWISE SPECIFIED:	
TOLERANCES	
X.X ± 0.5	FRAC. ± 1/64
X.XX ± 0.1	ANGLES ± 1.00°
X.XXX ± 0.05	FINISH $\sqrt[3.2]{\text{um}}$

**ERNEST ORLANDO LAWRENCE**  
**BERKELEY NATIONAL LABORATORY**  
 UNIVERSITY OF CALIFORNIA - BERKELEY

IDS  
 IDS Small Ring

DWG BY	DATE
CHK BY	DATE
APR BY	DATE

THREADS ARE CLASS 2  
 CHAMFER ENDS OF ALL SCREW THREADS 30°  
 CUT ROUND, 1.5 THREAD RELIEF ON MACHINED THREADS  
 BREAK EDGES .016 MAX. ON MACHINED WORK  
 REMOVE BURRS, WELD SPLATTER & LOOSE SCALE  
 IN ACCORDANCE WITH ASME Y14.5M & B46.1

SER NO.	SCALE: <b>1:2</b>	<b>SHEET 2 OF 2</b>			
PROJECT NO.	PROJECT NAME	CATEGORY CODE	DWG NO.	SIZE	REV.
			-	B	0001