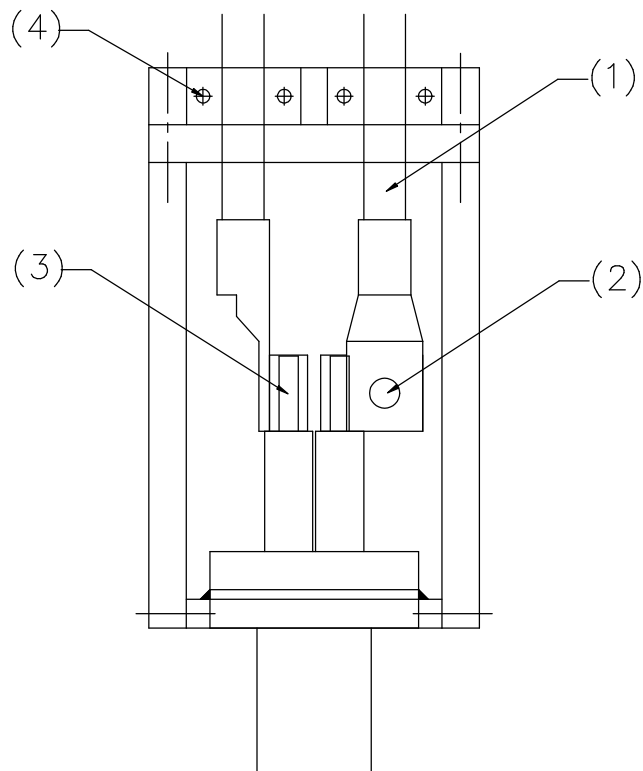
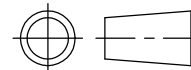


Install Procedure:

- (1) Prepare short cable L=12"
- (2) Screw short cable to connector
- (3) Soft solder connector to feedthru
- (4) Install G-10 support
- (5) Screw short cable to long cable
- (6) Should be very carefully while installing



THIRD ANGLE PROJECTION



WANG NMR INC

550 N CANYONS PARKWAY, LIVERMORE, CA 94551

NAME: CABLE SUPPORT

DWG #: S010B

SHT 1 OF 1

MATERIAL:

QTY

DWN BY: XU

DATE: March 2,2010

SCALE: TO FIT

DWG SIZE:

1ST CHK:

DATE:

2ND CHK:

DATE: