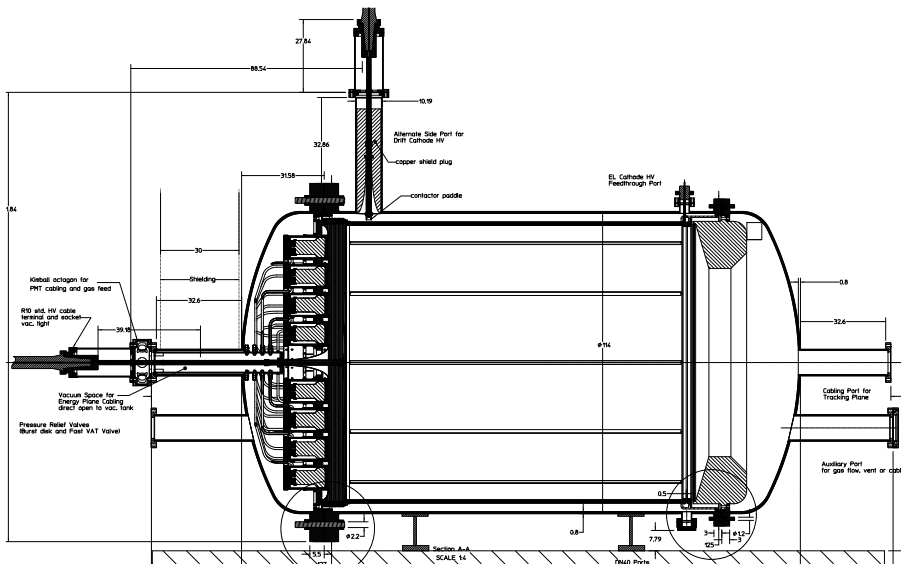


# NEXT-ANGEL Vessel update 10/3/2011

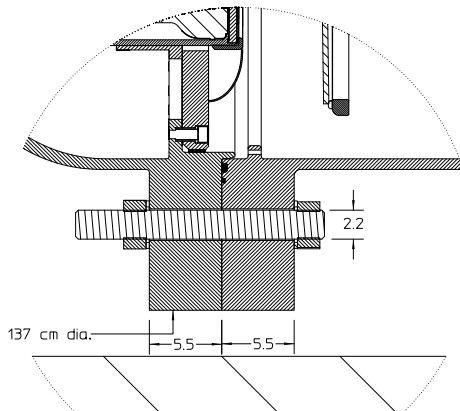
D. Shuman

Lawrence Berkeley National Laboratory

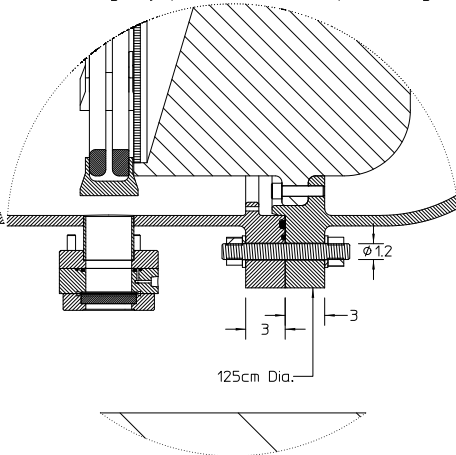
October 9, 2011



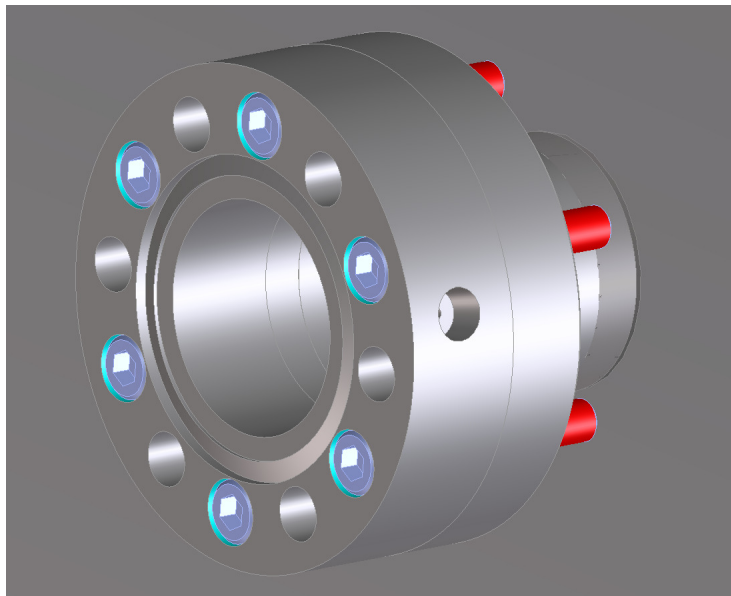
Helicoflex ( full gasket load) Design



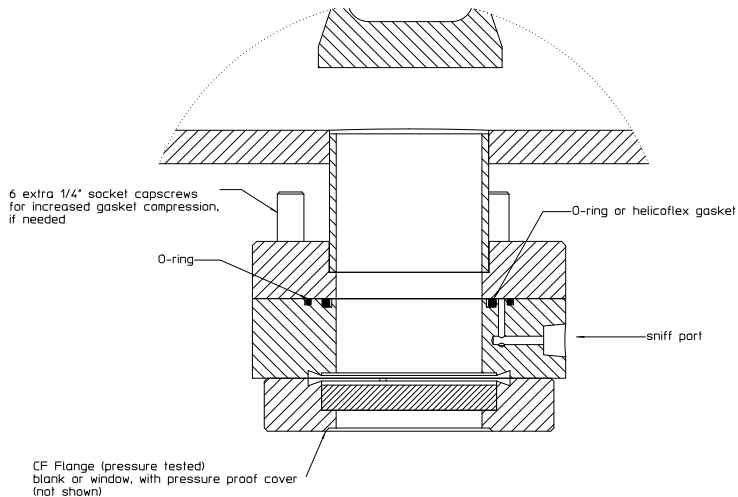
Double O-ring only (possible helicoflex capable) Design



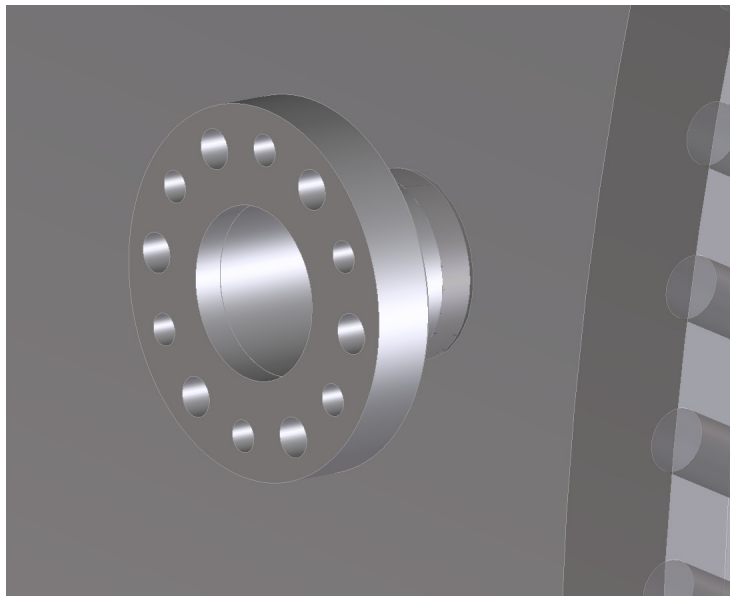
Interface flange, O-ring (2) or helicoflex/Oring one side, CF opposite

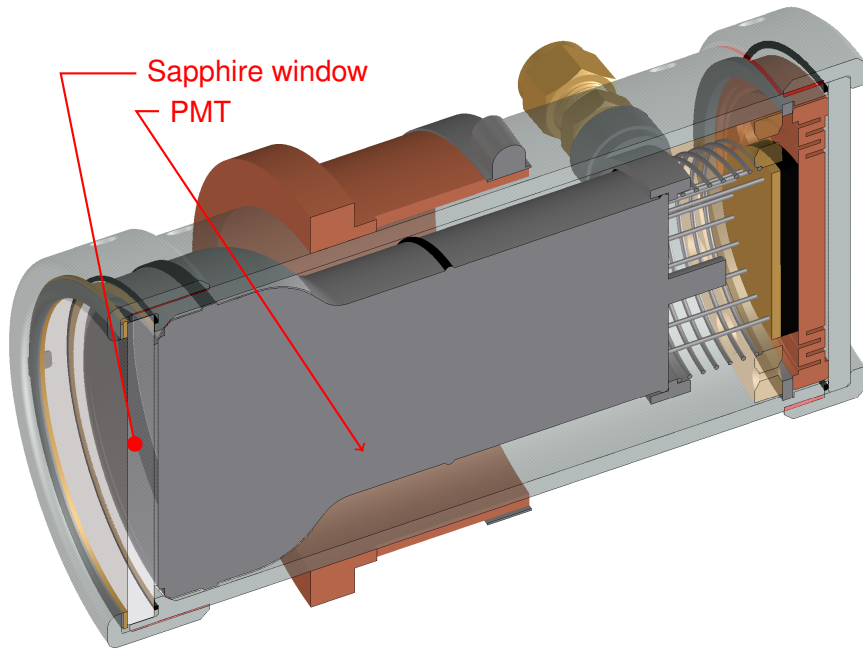


## Interface flange, O-ring (2) or helicoflex/Oring one side, CF opposite



## Nozzle flange, typ.





sapphire window

