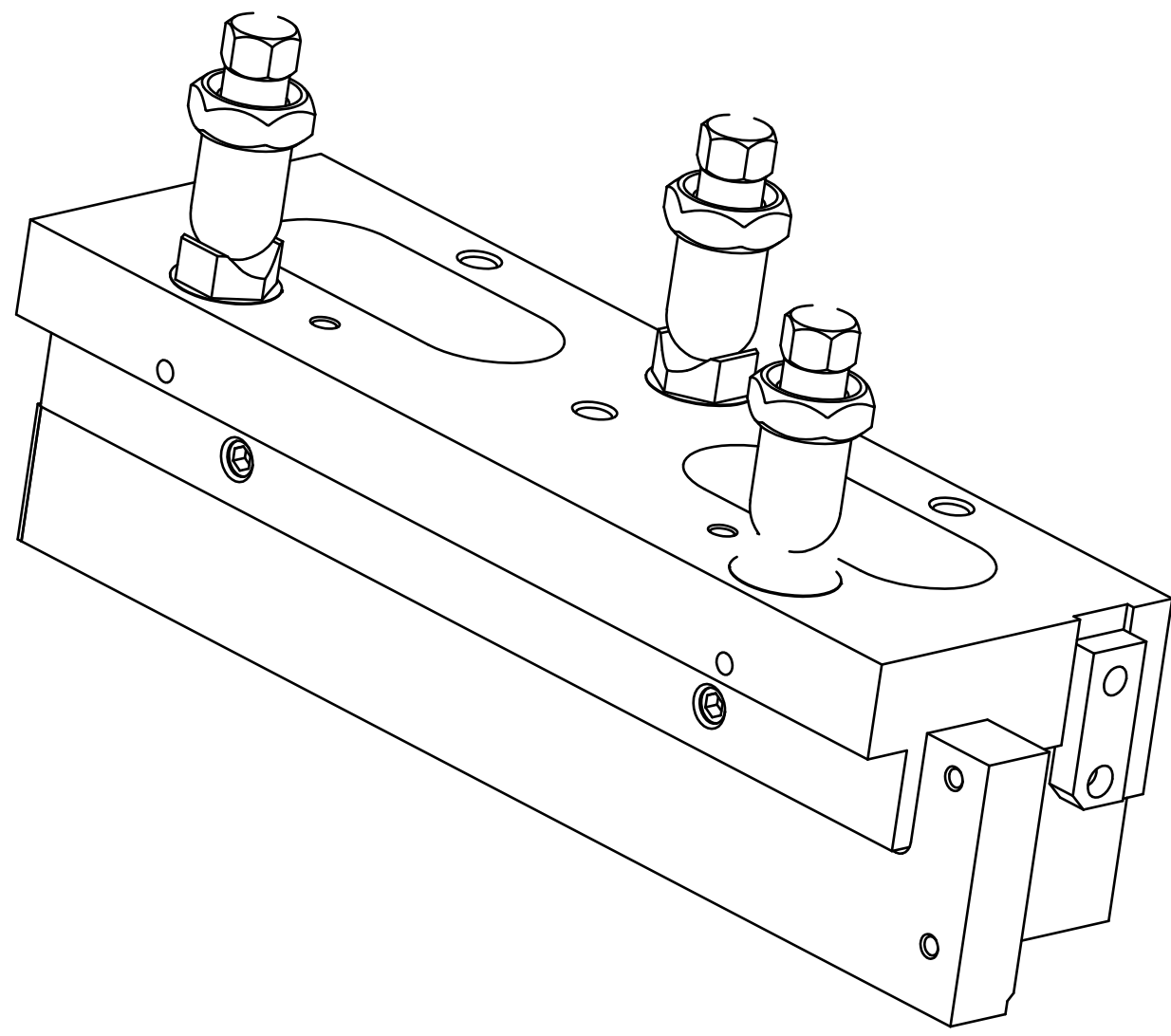
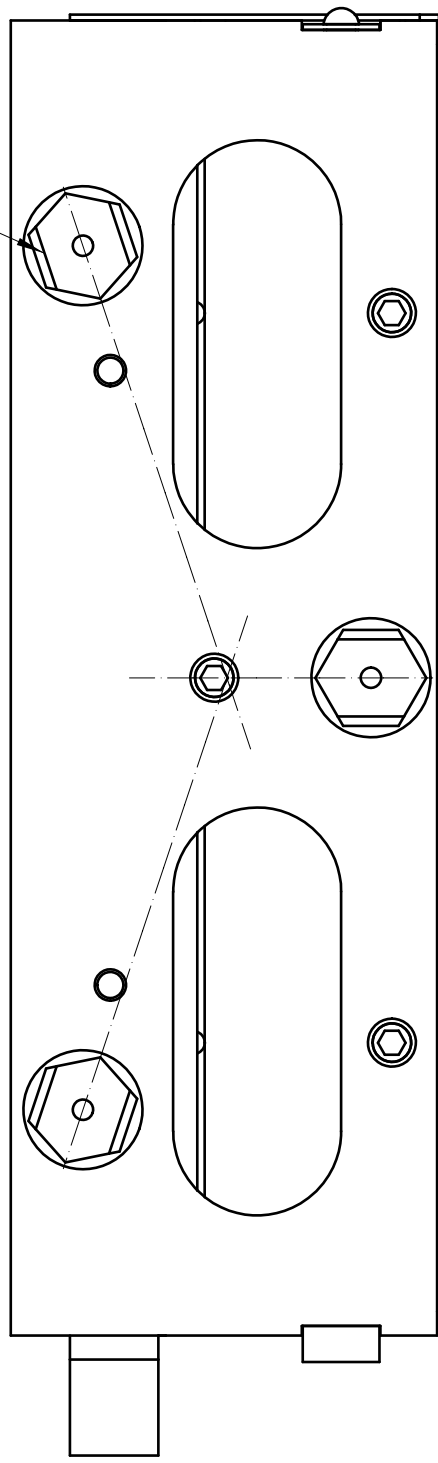
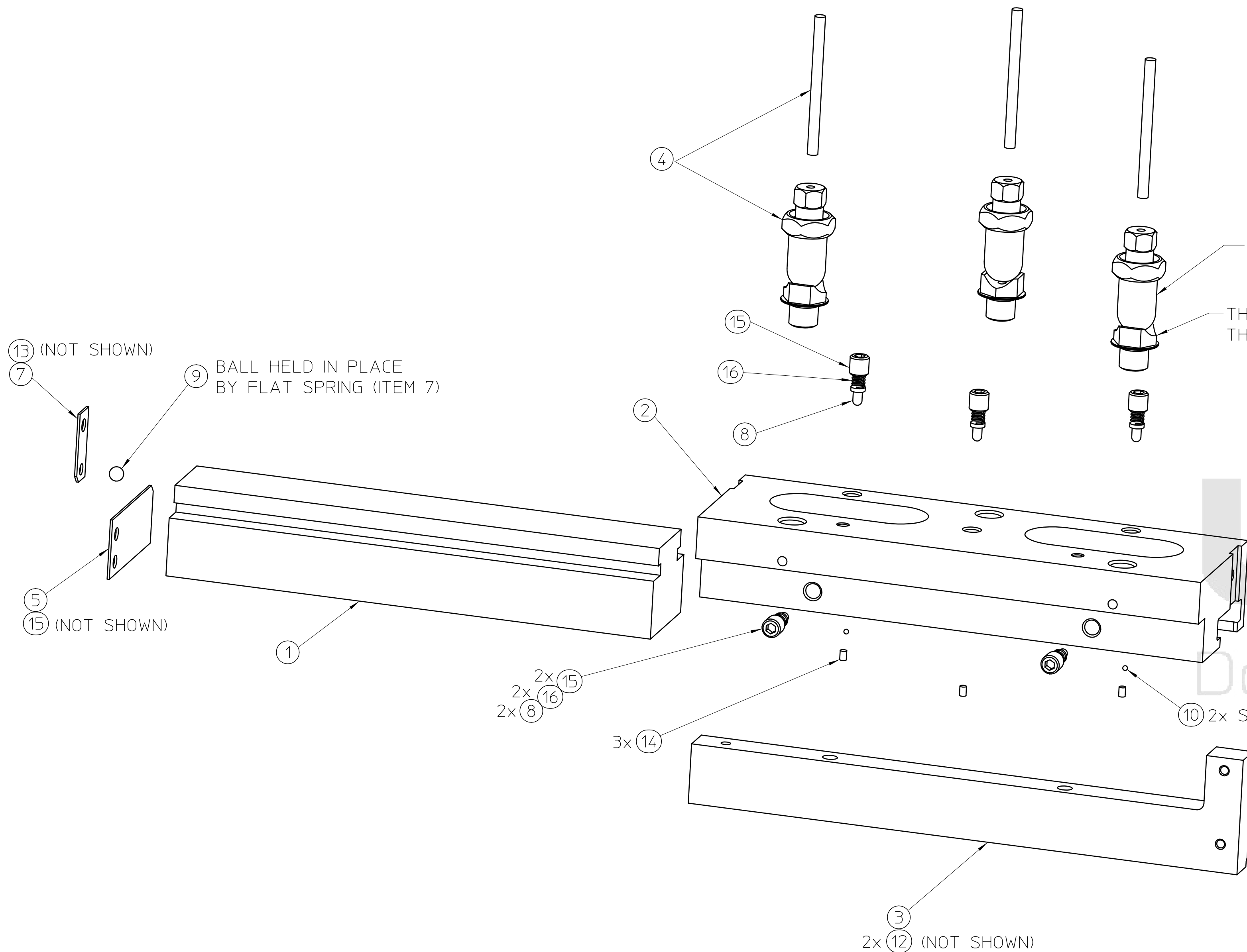


USE SHIMS AS REQUIRED BETWEEN SUBSTRATE AND MOUNT FEET TO ADJUST ORIENTATION OF MOUNT FEET SLOTS TO AXIAL DIRECTIONS INDICATED. (POINTING TO THEIR COMMON CENTER).



MOUNTING FOOT SLOT AXIS ORIENTATION DETAIL

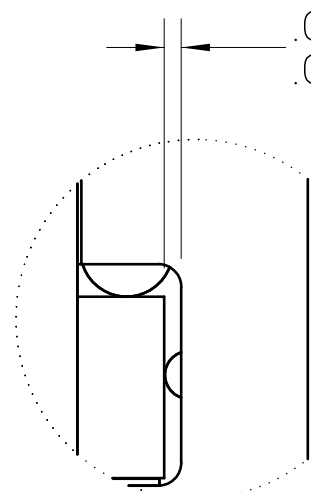
MOUNTING FOOT IS SHOWN IN THIS VIEW WITH THE OTHER PARTS OF THE ADJUSTER ASSEMBLIES REMOVED FOR CLARITY.



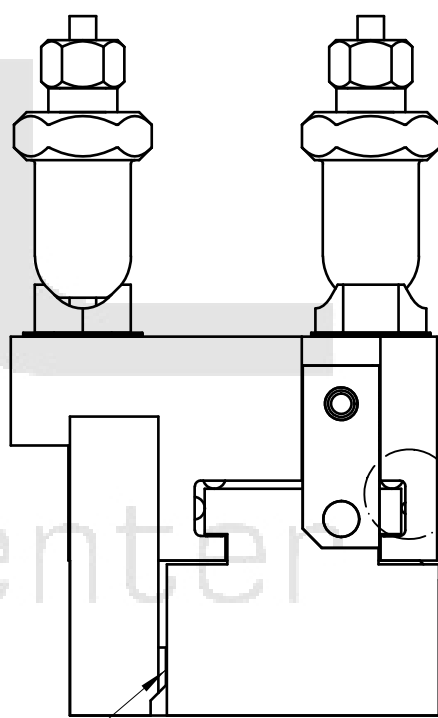
THE BODIES ARE ASSEMBLED INTO THE GRATING CRADLE (NOT SHOWN)
THE FEET ARE ASSEMBLED INTO THE GRATING MOUNTING PLATE (ITEM 2)

PRESS BALL HALFWAY INTO HOLDER (ITEM 6), LEAVE .090±.003 EXPOSED

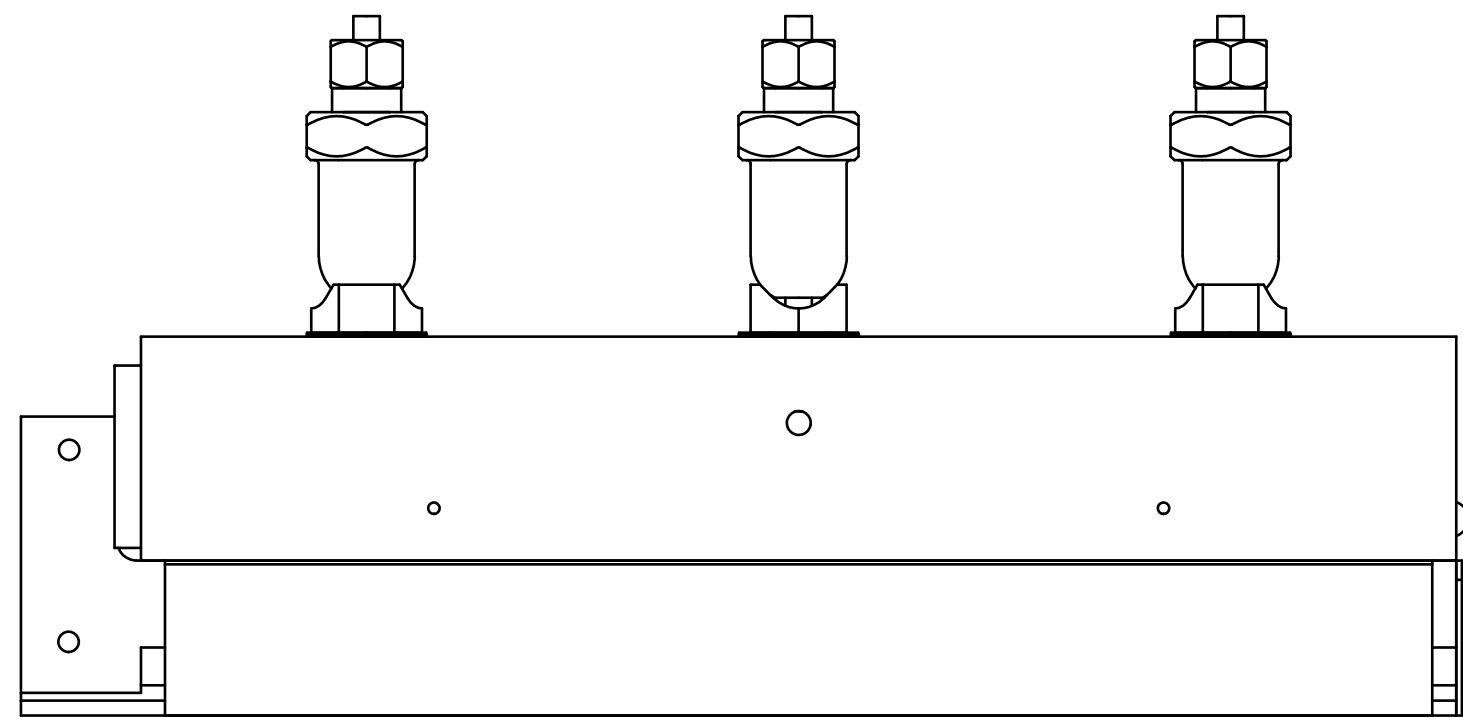
2x PRESS BALL, ITEM 10 INTO MOUNTING, ITEM 2 TO DIMENSION SHOWN



Detail1
SCALE 4:1



INDIUM GALLIUM INTERFACE FOR COOLING TRANSFER CONSULT LBL IF MORE INFO IS REQUIRED



UNLESS OTHERWISE SPECIFIED,

- DIMENSIONS AND TOLERANCING PER ASME Y14.5M-1994. ALL DIMENSIONS ARE IN INCHES. REFERENCE DIMENSIONS ARE SHOWN IN PARENTHESES. NOT ALL HIDDEN LINES ARE SHOWN.
- THIS IS AN ULTRA HIGH VACUUM (UHV) ASSY AND REQUIRES SPECIAL ATTENTION TO AVOID UHV CONTAMINATION. READ LBNL SPECIFICATION M20013 BEFORE PERFORMING ANY FAB- RICATION OR ASSEMBLY.
- PROTECT FINISHED ASSY BY BAGGING OR SIMILAR METHOD TO PROTECT AND MAINTAIN CLEANLINESS DURING SHIPMENT AND STORAGE. TAKE EXTREME CARE NOT TO DING, SCRATCH, DENT, OR OTHERWISE MARK ANY MACHINED SURFACE.

5	16		COIL SPRING, Ø.188 x Ø.016 WIRE x .310 HIGH, SST ASSOCIATED SPRING# C0180-016-0310S, OR=
5	15		SOC. HD SET SCREW, SST, 1/4-20UNC x .25 LG, SILVER PLATED
3	14		SOC. HD SET SCREW, SST, #2-56UNC x .19 LG, SILVER PLATED
4	13		SOC. HD CAP SCREW, SST, #6-32UNC x .38 LG, SILVER PLATED
2	12		SOC. HD CAP SCREW, SST, #8-32UNC x 1.00 LG, SILVER PLATED
	11		
2	10		BALL BEARING, .0625 DIAMETER, SST
2	9		BALL BEARING, .1875 DIAMETER, SST
5	8	26B333	MIRROR CLAMP PLUNGER
1	7	26B341	BALL SPRING RETAINER
1	6	26B342	BALL STOP RETAINER
1	5	26B340	GRATING MASK
3	4	26A963	GRATING MOUNTING ADJUSTER ASSY
1	3	26B473	GRATING COOLING SIDEPLATE LEFT
1	2	26B217	GRATING MOUNTING PLATE LEFT
1	1	26B347	GRATING SUBSTRATE
RECD	ITEM	PART NO.	DESCRIPTION

				UNLESS OTHERWISE SPECIFIED				PROJECT NAME: ERNEST ORLANDO LAWRENCE	
				FRACTIONS: XX/XX				UNIVERSITY OF CALIFORNIA	
				ANGLES: ° ' "/>1 INCH				ALS - INSERTION DEVICE BEAMLINES	
				MACH. SURFS: 125 ✓ 100				BL 6.0.1.2 BRANCHLINE	
				REF: ASME Y14.5M-1994, THREADS ARE CLASS 3				GRATING SUBASSY LEFT	
				BREAK EDGES .016 MAX. ON MACHINED WORK				SHEET 1 OF 1	
				REMOVE BURRS, WELD SPATTER & LOOSE SCALE				SIZE E DWG NO: 26B344	
				THIRD ANGLE PROJECTION				REV A	
REV	AUTHOR	APPROVER	DATE	CHANGE DESCRIPTION					