

D

D

C

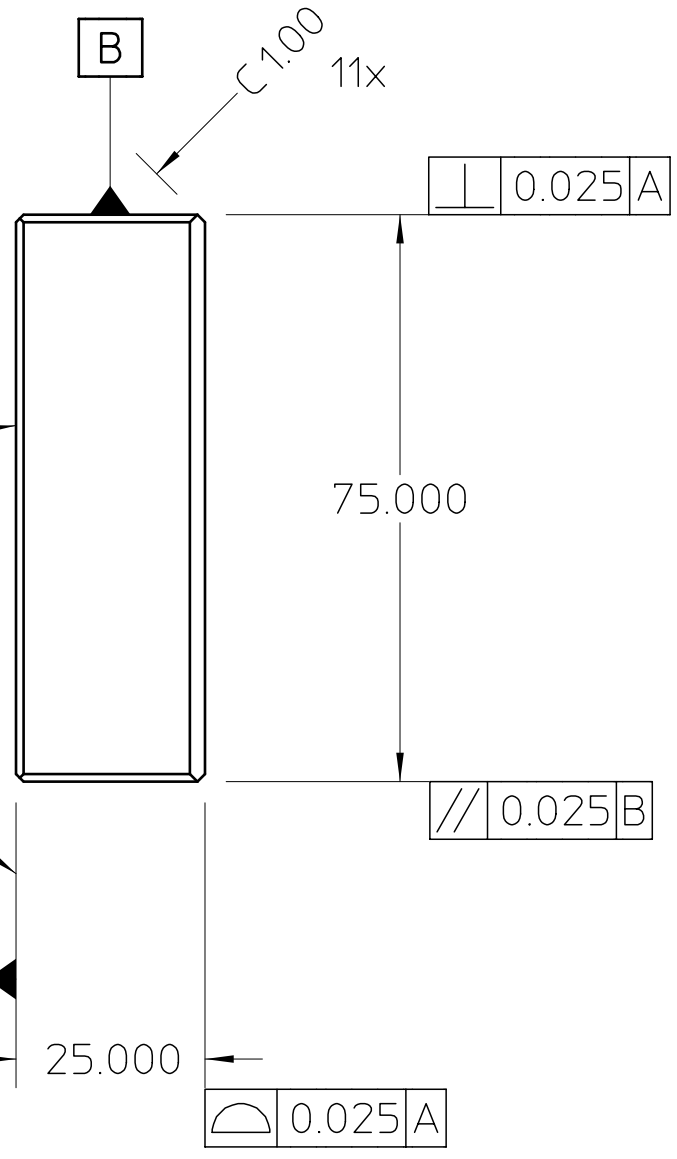
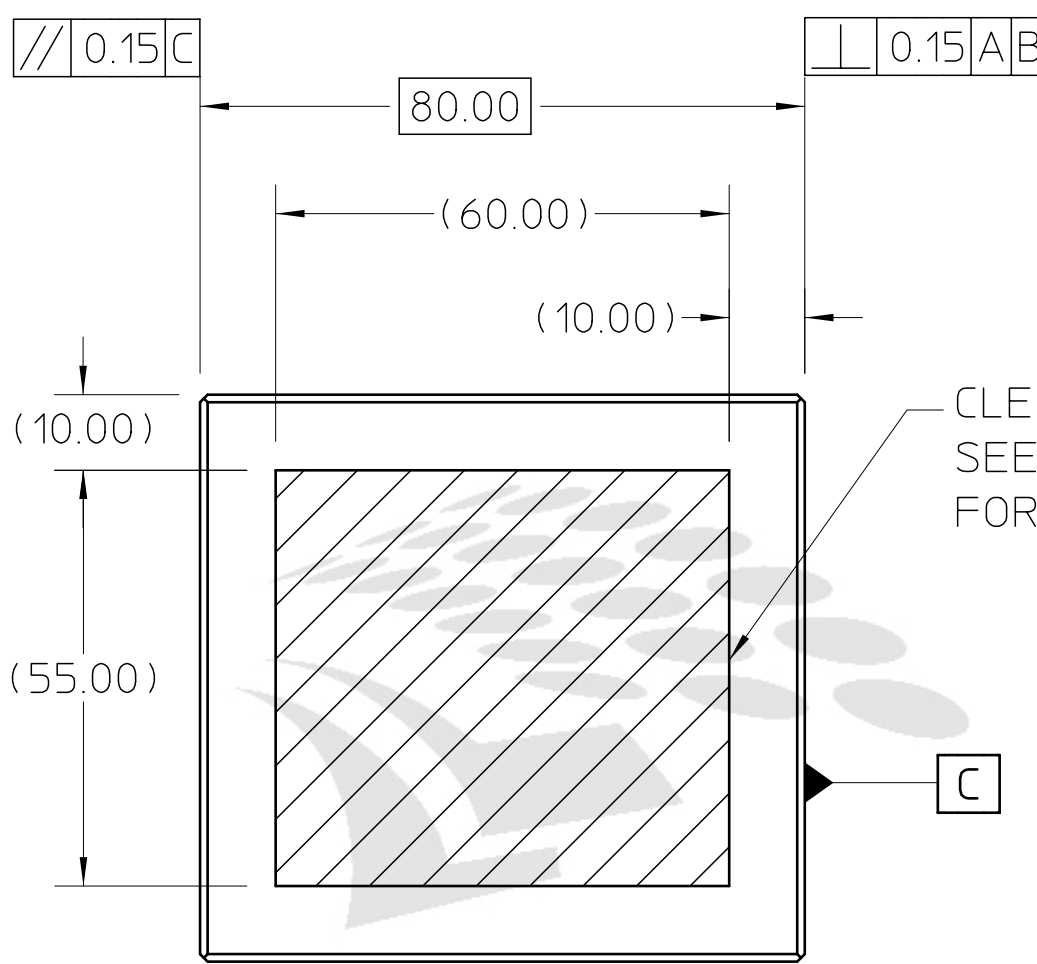
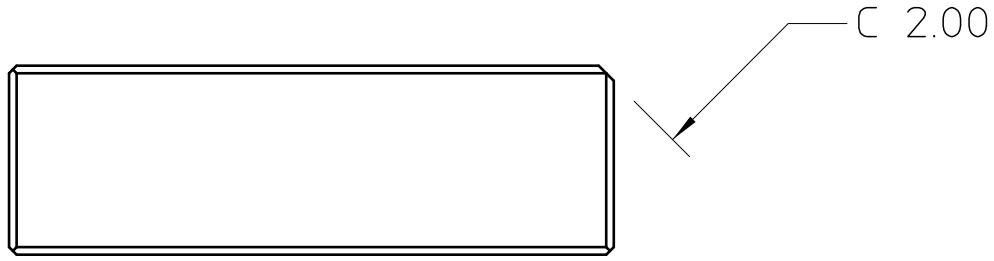
C

B

B

A

A



NOTES:

- DIMENSIONS AND TOLERANCING PER ASME Y14.5-1994. DIMENSIONS ARE IN MM AND FINISHES ARE IN μ M. REFERENCE DIMENSIONS ARE SHOWN IN PARENTHESES. NOT ALL HIDDEN LINES ARE SHOWN.
- THIS IS A UHV PART; CLEAN APPROPRIATELY. USE OF SULPHUR-BEARING OR SILICON-BEARING OILS, LUBRICANTS, OR COOLANTS IS PROHIBITED. USE OF POWER DRIVEN, RESIN BONDED, OR RUBBER BONDED ABRASIVES IS PROHIBITED. CERAMIC BONDED ABRASIVES, TUNGSTEN CARBIDE, AND DIAMOND WHEELS ARE ACCEPTABLE.
- SEE SPECIFICATION M20017 FOR POLISHING REQUIREMENTS.

LBNL
Document Control Center

MAT 2: ,		NOTES:	
MAT 1: , SINGLE CRYSTAL SILICON		NOTES:	
PROJECT NAME:		ERNEST ORLANDO LAWRENCE	
PROJECT NUMBER:		BERKELEY NATIONAL LABORATORY	
		UNIVERSITY OF CALIFORNIA	
		ALS - INSERTION DEVICE BEAMLINES	
		BL 6.0.1.2 BRANCHLINE	
		BL 6.0.1.2 FS MONO PREMIRROR M102.3 SUBSTRATE	
DO NOT SCALE PRINT		CATEGORY CODE:	
SCALE: 1 : 1		AL 4165	
THIRD ANGLE PROJECTION		SHEET 1 OF 1	
		SIZE: C	
		DWG NO: 26B246	
		REV A	

REV	AUTHOR	APPROVER	DATE	CHANGE DESCRIPTION
A	patton	patton	03-09-20	INITIAL REVISION

UNLESS OTHERWISE SPECIFIED	
TOLERANCES	.X ± .- .XX ± 0.25 .XXX ± 0.050
FRACTIONS	: ± - / - -
ANGLES	: ± - . - °
MACH. SURFS.	: 0.8 ✓ OR BETTER
REF: ASME Y14.5M-1994, THREADS ARE CLASS 2	
BREAK EDGES .016 MAX. ON MACHINED WORK	
REMOVE BURRS, WELD SPLATTER & LOOSE SCALE	