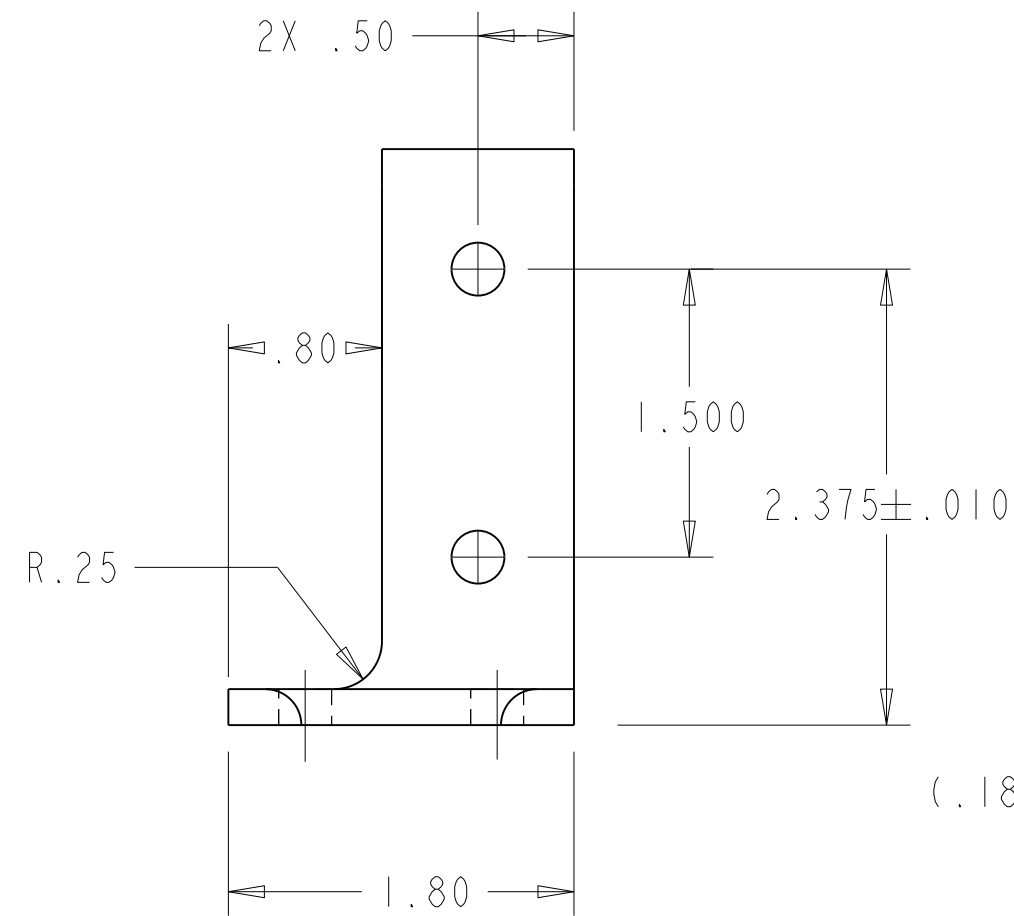
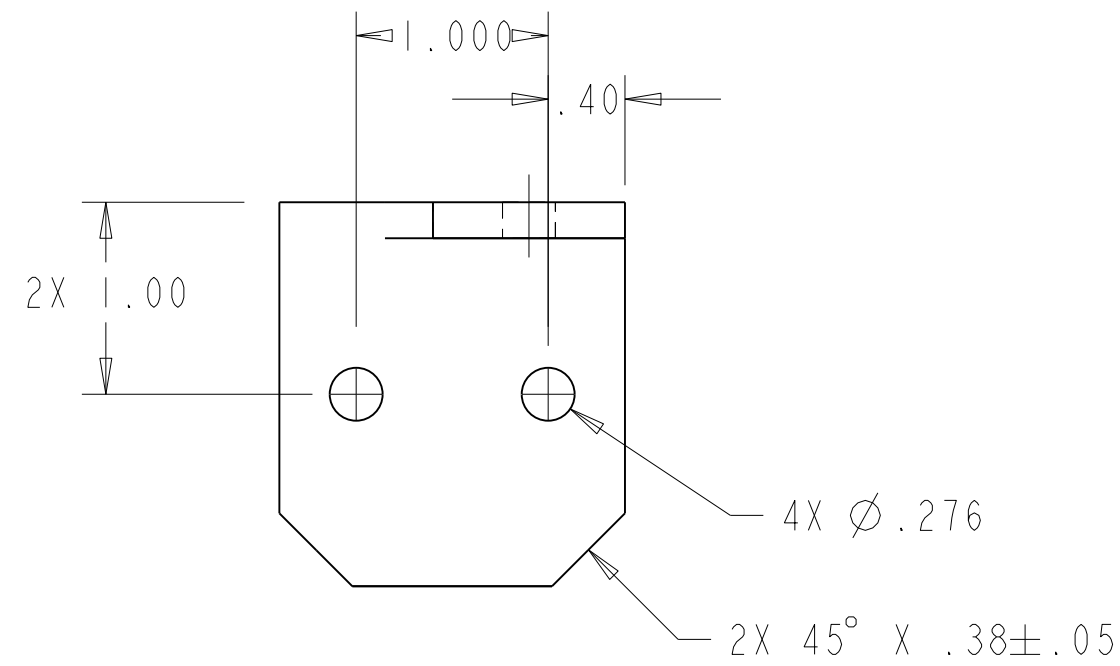
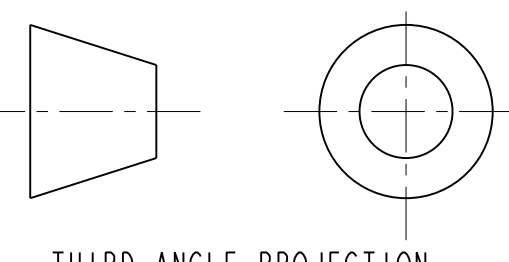
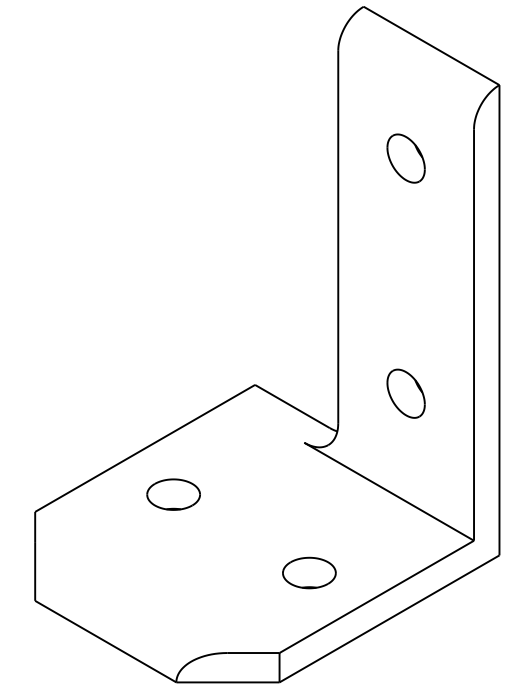


NOTES: (UNLESS OTHERWISE SPECIFIED)

1. THIS IS A CRYOGENIC VACUUM COMPONENT.
2. CLEANING PROCEDURE : PER VENDOR SPECIFICATION WITH LBNL APPROVAL.
3. PACKAGING AND STORAGE PROCEDURE OF THE COMPONENTS: PER VENDOR SPECIFICATION WITH LBNL APPROVAL.
4. DIMENSIONS AND TOLERANCING PER ANSI Y14.5M-1982. UNITS ARE IN INCHES UNLESS OTHERWISE SPECIFIED.
5. USE OF SULFUR OR SILICONE BEARING OILS, LUBRICANTS, OR COOLANTS ARE STRICTLY PROHIBITED.
6. USE OF RESIN OR RUBBER BONDED ABRASIVES UNDER POWER IS STRICTLY PROHIBITED. USE VITREOUS BONDED ABRASIVES ONLY.



DESCRIPTION	MATERIAL	MAT. LOCATION
ANGLE	SS	-



THIRD ANGLE PROJECTION

REV	DWG	CHK	ZONE	DATE	CHANGES
A	RLM	DPO		11-18-02	INITIAL RELEASE

TOLERANCES		SHOP ORDERS		SER. NO.
X.X ± 0.1	FRAC. ± 1/64	ACCT. NO.	NO. RECD	-
X.XX ± 0.02	Angles ± 1.00°	DEL TO	DATE ISSD	-
X.XXX ± 0.005	FINISH $\sqrt{25}$ (µin)	SURFACE TREATMT	DATE RECD	-
DO NOT SCALE PRINT		IDENT METHOD TAG		
THREADS ARE CLASS 2		PROJECT NUMBER		
CHAMFER ENDS OF ALL SCREW TREADS 30°		PROJECT NAME		
CUT ROUND, 1.5 THREAD RELIEF ON MACHINED THREADS		DWG BY	DATE	
BREAK EDGES .016 MAX. ON MACHINED WORK		CHK BY	DATE	
REMOVE BURRS, WELD SPLATTER & LOOSE SCALE		APR BY	DATE	
IN ACCORDANCE WITH ASME Y14.5M & B46.1				

<b>ERNEST ORLANDO LAWRENCE BERKELEY NATIONAL LABORATORY</b> UNIVERSITY OF CALIFORNIA - BERKELEY					
LHC IR FEEDBOX CRYOGENICS SUPPORT BRACKET					
MICROFILMED:	DWG. TYPE	SHOWN ON	SCALE: 1.000	DO NOT SCALE PRINTS	
	PART	-		SHEET 1 OF 1	
PATENT CLEAR:	DESIGN ACCT. NO.	CATEGORY CODE	DWG. NO.	SIZE	REV.
	Z5LCE3	LH2003	25M9323	1	1

DWG. NO. 25M9323 REV. 1 SH. 1

REV. 11/21/02 J. L. OSHATZ