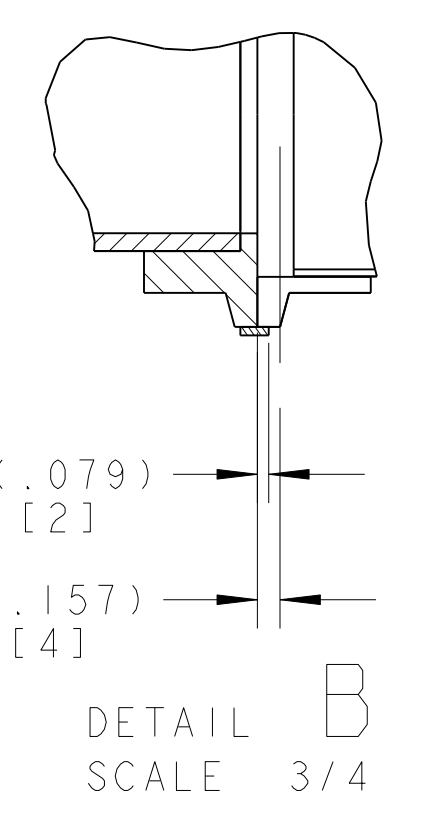
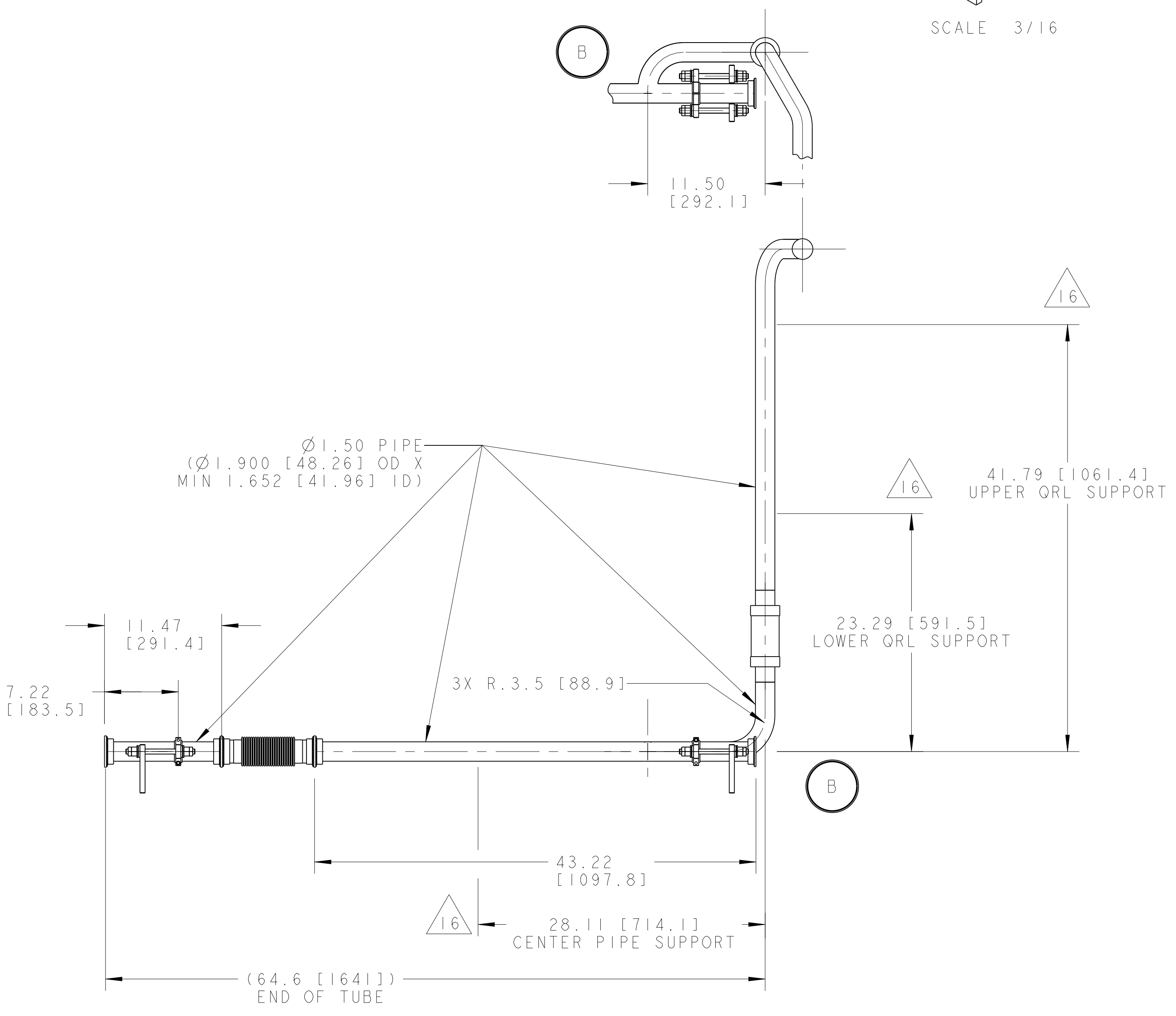
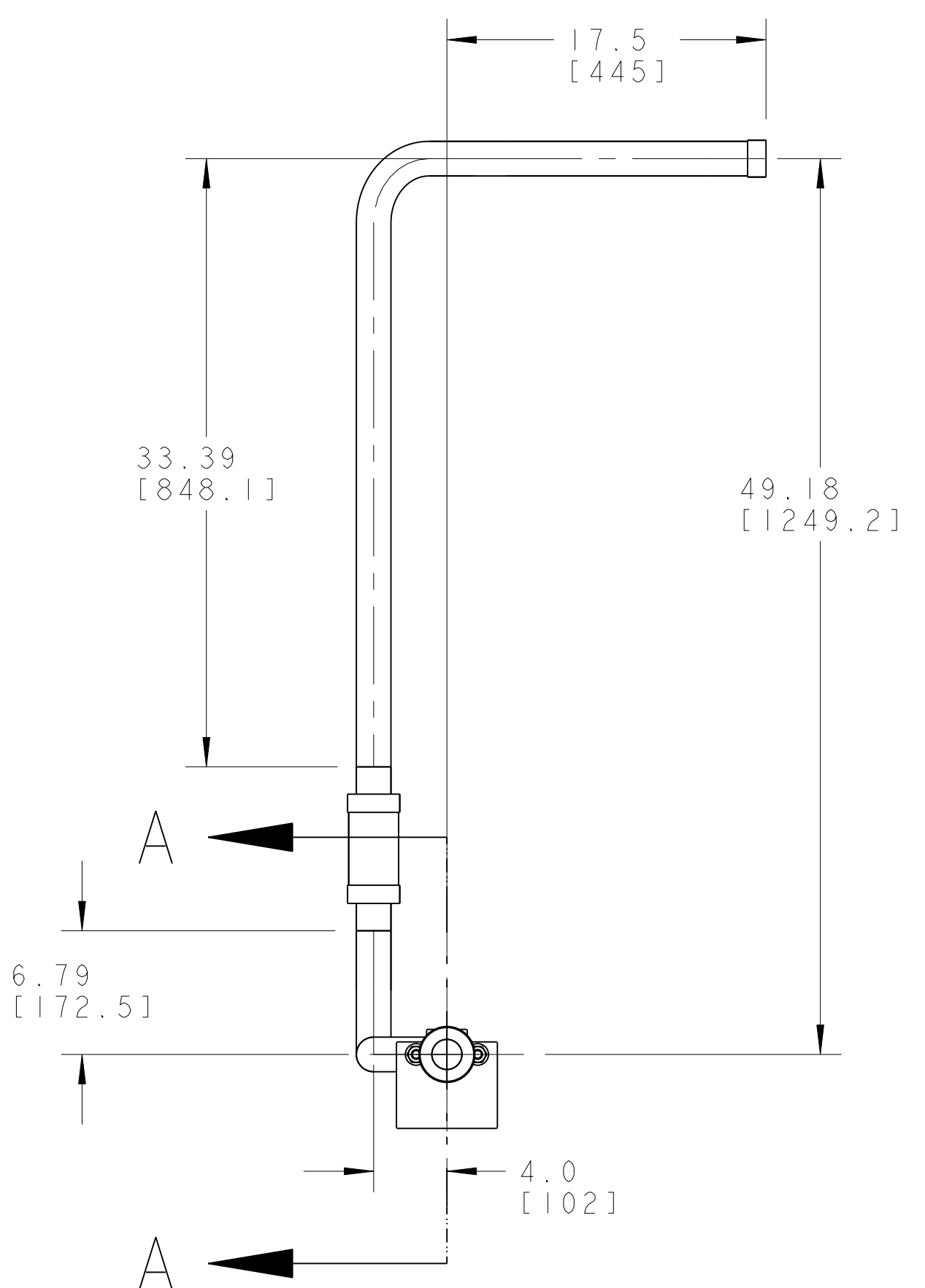
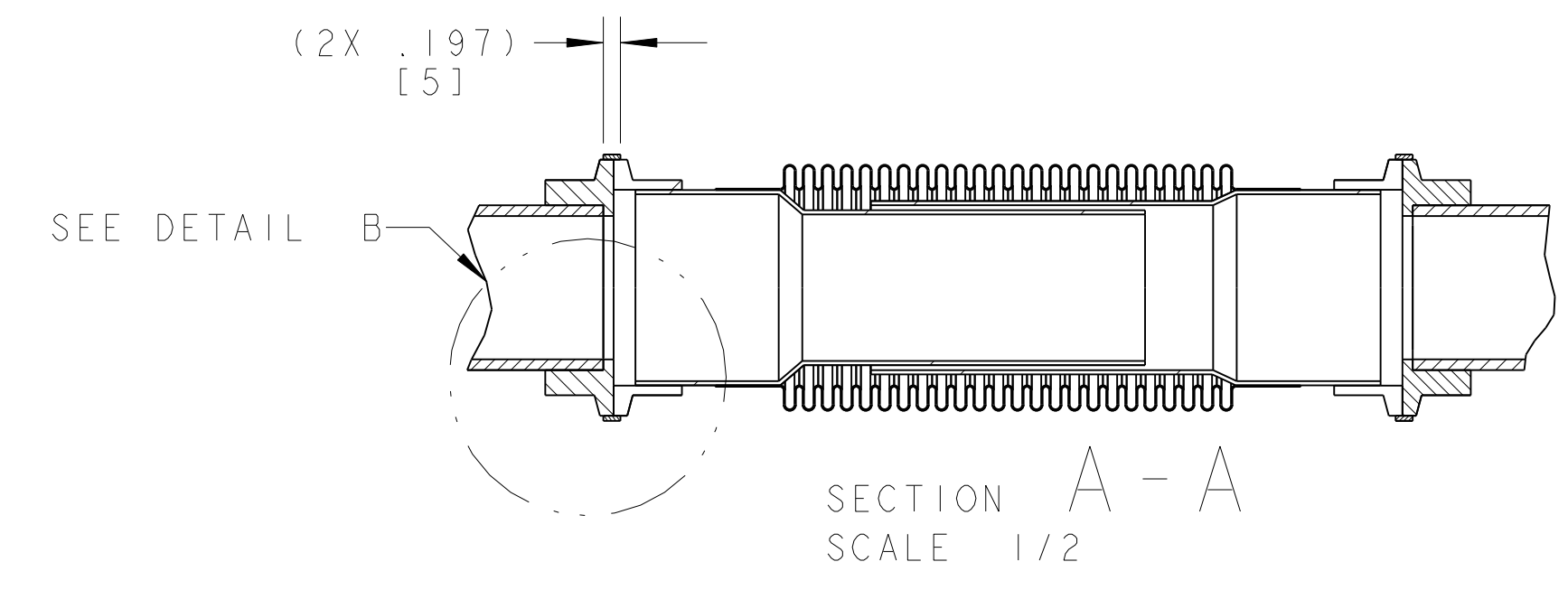


SCALE 3/16

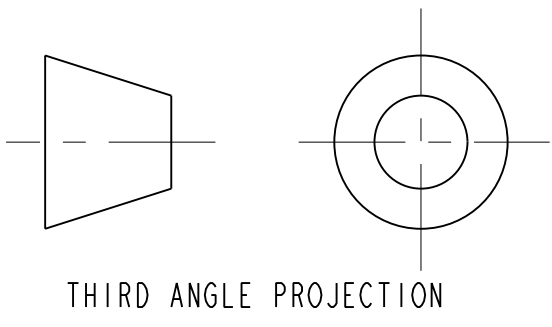
- NOTES: (UNLESS OTHERWISE SPECIFIED)
- THIS IS A CRYOGENIC VACUUM COMPONENT.
 - WELDING PROCEDURE: PER VENDOR SPECIFICATION WITH LBNL APPROVAL.
 - CLEANING PROCEDURE: PER VENDOR SPECIFICATION WITH LBNL APPROVAL.
 - PACKAGING AND STORAGE PROCEDURE OF THE COMPONENTS: PER VENDOR SPECIFICATION WITH LBNL APPROVAL.
 - DIMENSIONS AND TOLERANCING PER ANSI Y14.5M-1982. UNITS ARE IN INCHES [mm] UNLESS OTHERWISE SPECIFIED.
 - USE OF SULFUR OR SILICONE BEARING OILS, LUBRICANTS, OR COOLANTS ARE STRICTLY PROHIBITED.
 - USE OF RESIN OR RUBBER BONDED ABRASIVES UNDER POWER IS STRICTLY PROHIBITED. USE VITREOUS BONDED ABRASIVES ONLY.
 - VENDOR SUGGESTED CHANGES TO WELD PREPS; SUBJECT TO LBNL APPROVAL.
 - FITTINGS MAY BE USED IN PLACE OF BENDS; SUBJECT TO LBNL APPROVAL.
 - VENDOR SUGGESTED CHANGES TO TOLERANCES TO FACILITATE FABRICATION OR ASSEMBLY; SUBJECT TO LBNL APPROVAL.
 - REMOVE ALL THE BURRS AND REAM THE ENDS FOR CIRCULARITY AND CLEAN ENDS.
 - PERFORM ACCEPTANCE TESTS PER SECTION 3.2 OF LBNL SPECIFICATION M856.
 - A MARK DESIGNATING THE INSTALLED LENGTH WILL BE UTILIZED DURING FINAL INSTALLATION OF THE FEEDBOX ASSEMBLY. MARK, SCRIBE OR ETCH THIS LOCATION IN A PERMANENT MANNER, SUBJECT TO LBNL APPROVAL, TO AN ACCURACY OF ± 0.063 ".
 - PROVIDE A MINIMUM LENGTH OF 4.0" OF STRAIGHT, SMOOTH PIPE ON THE INDICATED SIDE OF THE INSTALLED LENGTH MARK FOR PIPE WELDING DURING FINAL INSTALLATION OF THE FEEDBOX ASSEMBLY.
 - PIPE MUST BE STRAIGHT AND SMOOTH (NO BUMPS) FOR 0.5" ON EITHER SIDE OF THE CENTER-PLANE OF THE SUPPORT.
 - CAP BOTH ENDS OF PIPE AFTER ACCEPTANCE TESTS PER SECTION 3.2 OF LBNL SPECIFICATION M856.



DETAIL B SCALE 3/4



SECTION A-A SCALE 1/2



THIRD ANGLE PROJECTION

REV	DWG	CHK	ZONE	DATE	CHANGES
B	RLM	DPO		11-6-02	CORR DESCR FOR FLEX HOSE SIZE, CHANGED DESCRIPTION CALLOUT FOR BOM ITEM 5 & 7-9, REMOVED WELD CALLOUT, DELETED ORB WELD CLEARANCE CALLOUT, ADDED ORL FLANGE CALLOUT, ADDED PARTIAL VIEW.
A	ARH	DPO		8/19/02	INITIAL RELEASE

ITEM	PART NO	REQD	DESCRIPTION	MATERIAL
8		1	PIPE, PER ASTM A312	SS 304L
7		1	PIPE, PER ASTM A312	SS 304L
6	25H406	1	THRUST SUPPORT, BUS DUCT	SS 304L
5		2	PIPE, PER ASTM A312	SS 304L
4		3	WELD RING, ID 75mm, FINAL SUPPLIED	SS 304L
3	251307	4	FLANGE, FINAL # 5520-MB-390033	SS 300 SERIES
2		1	BRAIDED FLEX HOSE, 1 1/2" ID X 4" LL	SS 300 SERIES
1	251312	1	BELLOWS, FINAL # 5520-MC-390061	SS 300 SERIES

UNLESS OTHERWISE SPECIFIED:
 X.X ± 0.1 FRACTION ± 1/64
 X.XX ± 0.03 ANGLES ± 1.00°
 X.XXX ± 0.010 FINISH

DO NOT SCALE PRINT

ERNEST ORLANDO LAWRENCE
 BERKELEY NATIONAL LABORATORY
 UNIVERSITY OF CALIFORNIA BERKELEY

LHC IR FEEDBOX
 CRYOGENICS
 PIPE WELDMENT, LD3/CROSSOVER

DATE: 13-Aug-02
 DATE: 17-AUG-02
 DATE: 17-AUG-02

SCALE: 1/8
 SHEET 1 OF 1
 25M8586 B