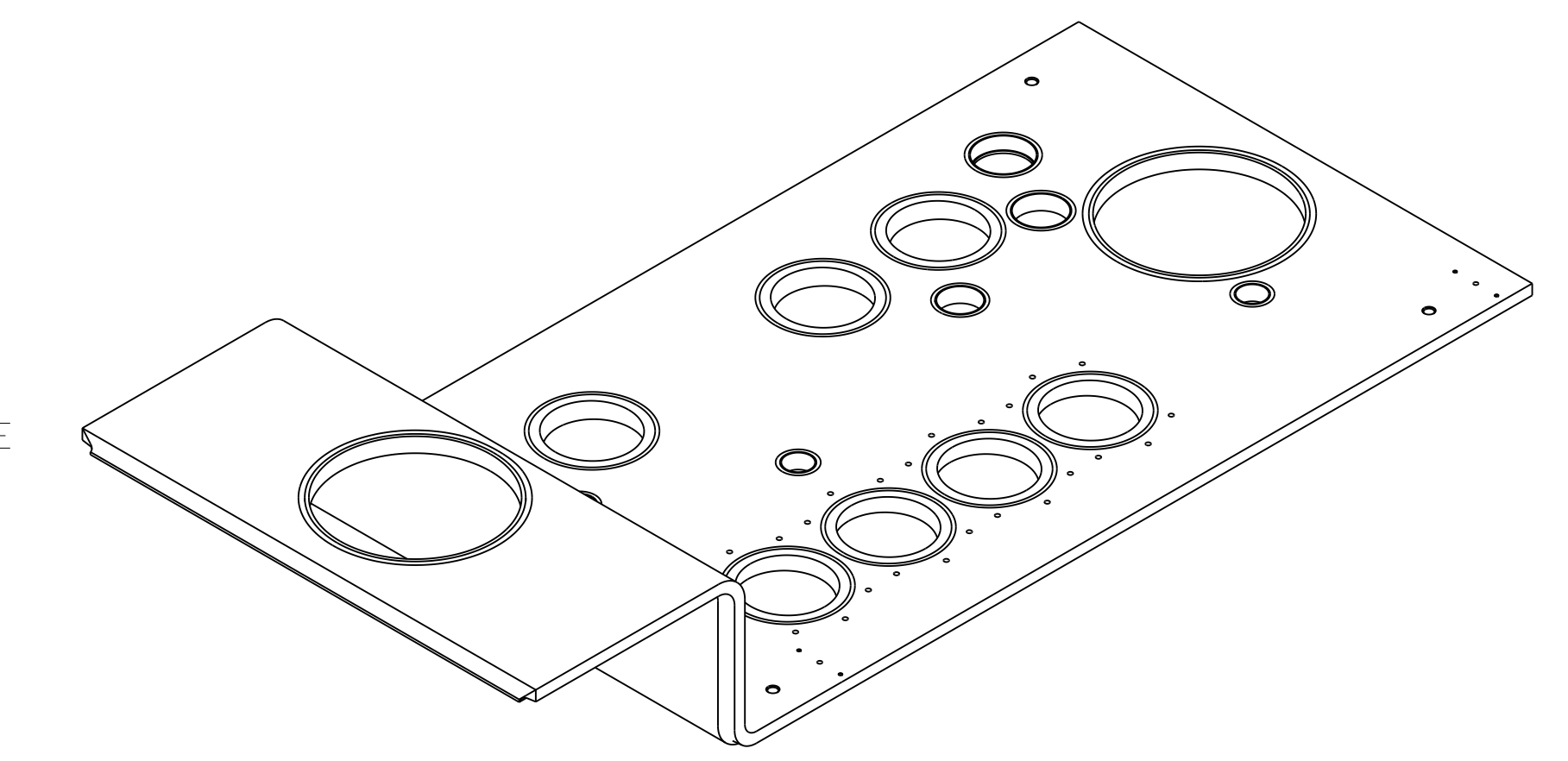
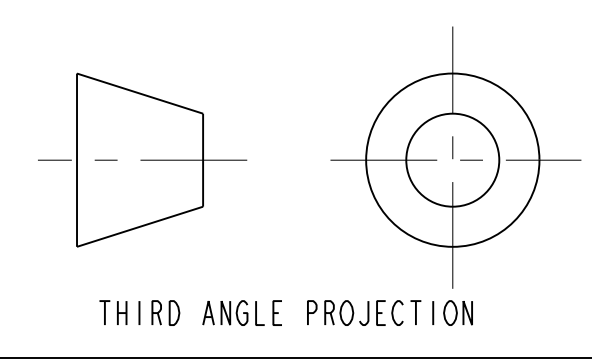
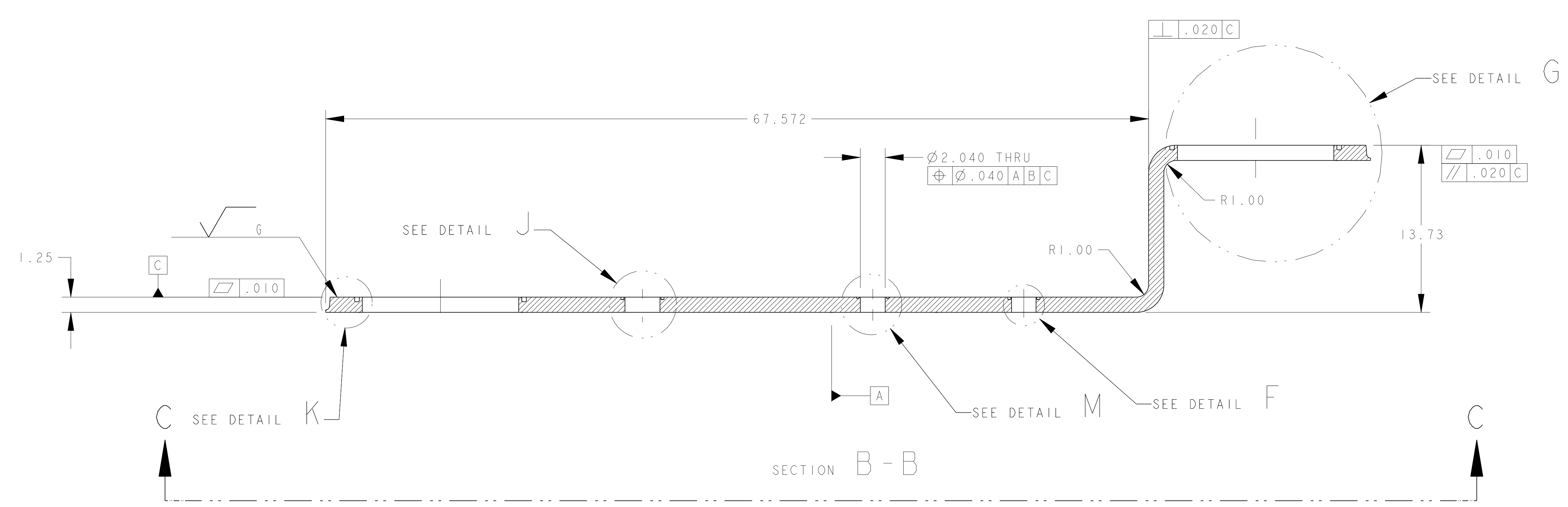


- NOTES: UNLESS OTHERWISE SPECIFIED,
1. BLANCHARD GRIND PLATE, DATUM -C- SIDE BEFORE MACHINING MINIMUM CLEANUP.
 2. DIMENSIONS AND TOLERANCING PER ANSI Y14.5M-1982 UNITS ARE IN INCHES UNLESS OTHERWISE SPECIFIED.
 3. USE OF SULFUR OR SILICONE BEARING OILS, LUBRICANTS, OR COOLANTS ARE STRICTLY PROHIBITED
 4. USE OF RESIN OR RUBBER BONDED ADRASIVES UNDER POWER IS STRICTLY PROHIBITED. USE VITREOUS BONDED ABRASIVES ONLY.
 5. CLEANING SPECIFICATIONS FOR PARTS AND WELDMENTS TO BE PROVIDED BY VENDOR AND APPROVED BY LBNL.
 6. PROTECT FINISHED PART BY BAGGING OR SIMILAR METHOD TO PROTECT AND MAINTAIN CLEANLINESS DURING SHIPMENT AND STORAGE.
 7. VENDOR PROPOSED WELD PREPS MODIFICATIONS SUBJECT TO LBNL APPROVAL.
 8. STRESS RELIEVE PART AFTER BENDING, PRIOR TO FINISH MACHINING.
 9. ESTIMATED WEIGHT = 1,096 LBS



SCALE 1/10



UNLESS OTHERWISE SPECIFIED		SHOP ORDERS		ERNEST ORLANDO LAWRENCE BERKELEY NATIONAL LABORATORY UNIVERSITY OF CALIFORNIA - BERKELEY	
TOLERANCES	FRAC. ± 1/64	NO. OF DEC.	NO. OF DEC.	DATE	SCALE
X.X ± 0.1	NO.	NO.	NO.	22-Aug-01	1/5
X.XX ± 0.03	NO.	NO.	NO.	04-APR-02	1/5
X.XXX ± 0.010	NO.	NO.	NO.	04-APR-02	1/5
FINISH	AS SHOWN	DATE	DATE	DATE	DATE
DO NOT SCALE PRINT	DATE	DATE	DATE	DATE	DATE
THREADS ARE CLASS 2	DATE	DATE	DATE	DATE	DATE
CHAMFER ENDS OF ALL SCREW THREADS 30°	DATE	DATE	DATE	DATE	DATE
OUT-ROUNDS, 1.5 THREAD RELIEF ON MACHINED THREADS	DATE	DATE	DATE	DATE	DATE
BREAK EDGES .015 MAX. ON MACHINED WORK	DATE	DATE	DATE	DATE	DATE
REMOVE BURRS, WELD SPATTER & LOOSE SCALE	DATE	DATE	DATE	DATE	DATE
IN ACCORDANCE WITH ADME 114.5M 1 ENCL. 1	DATE	DATE	DATE	DATE	DATE

PLATE, HOT ROLLED, ANNEALED, PICKLED PER ASTM A-240	304L SS	
DESCRIPTION	MATERIAL	MAT. LOCATION
LHC IR FEEDBOX		
VACUUM		
TOP PLATE DF8X B IPI RIGHT		
MICROFILMED:	DWG. TYPE	SHOWN ON
PART	251152	SCALE 1/5
PART	251152	SHEET 1 OF 3
PATENT CLEAR:	DESIGN ACCT. NO.	CATEGORY CODE
ZSLCE2	LH2002	DWG. NO. 2518756
		SIZE REV. A

8 7 6 5 4 3 2 1

D

C

B

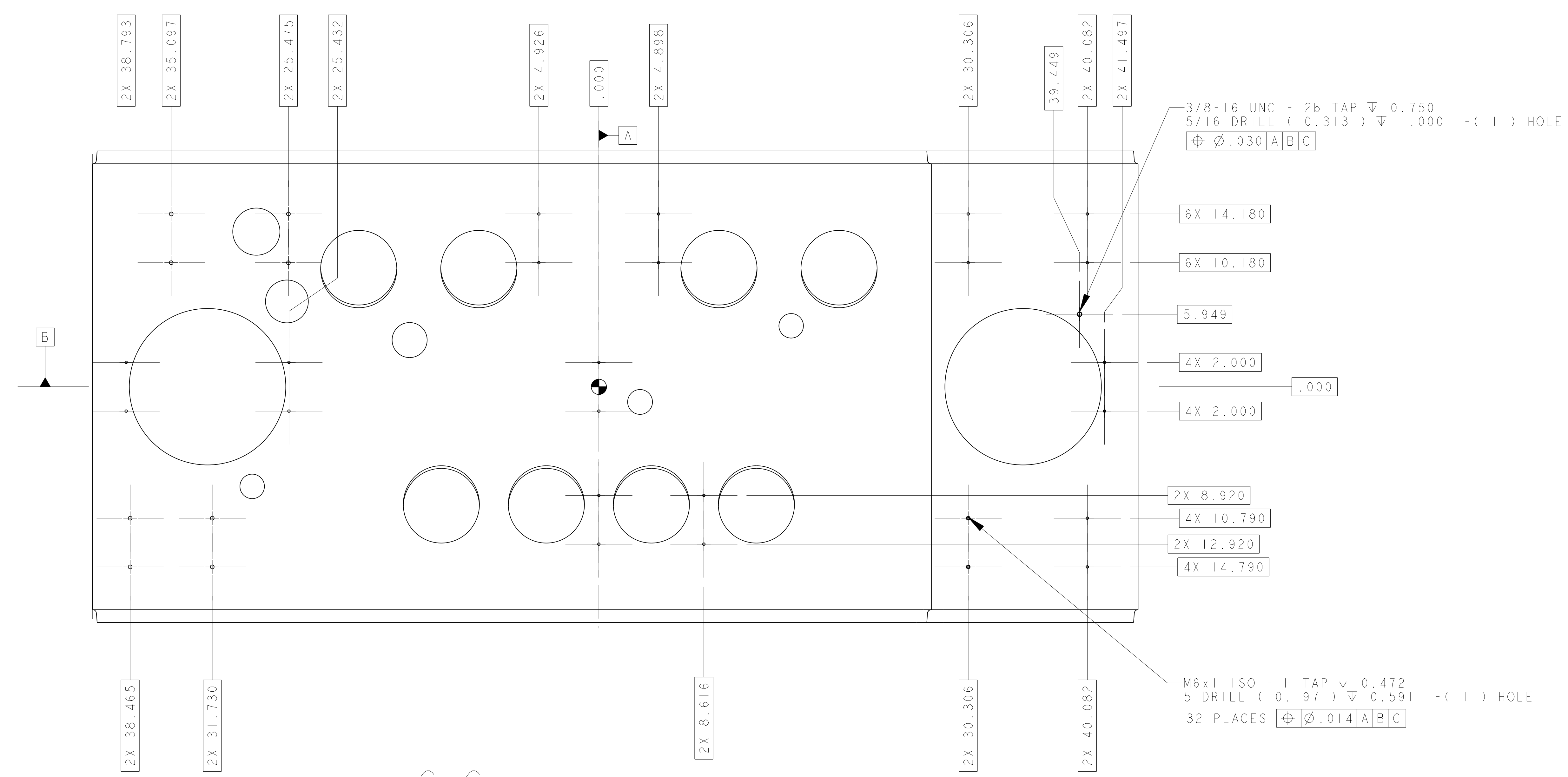
A

D

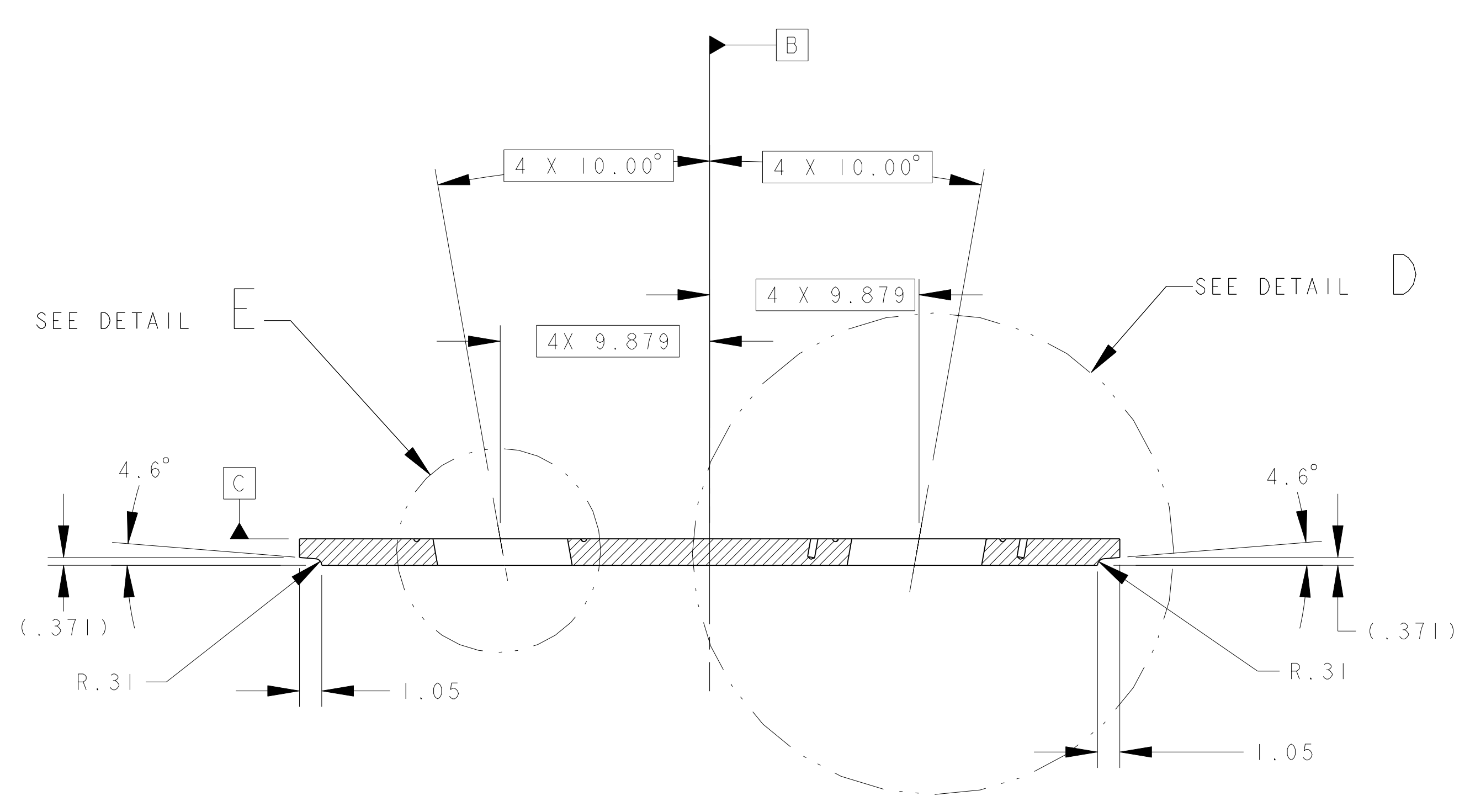
C

B

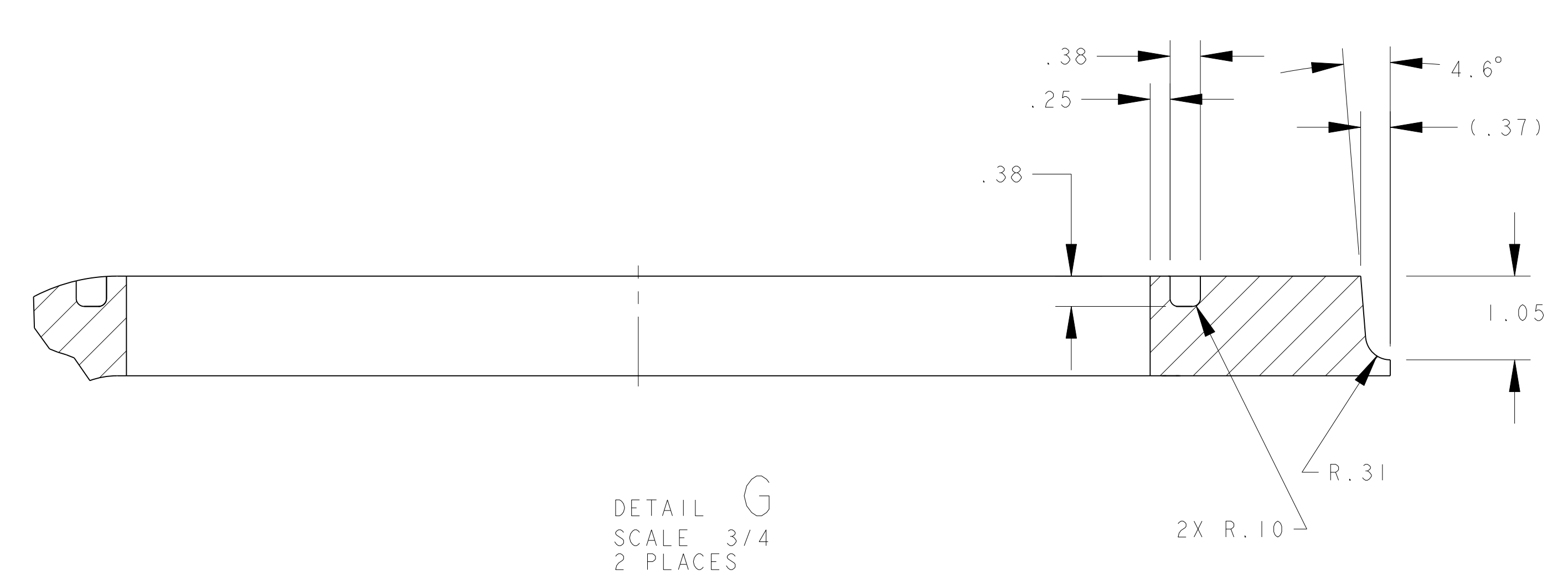
A



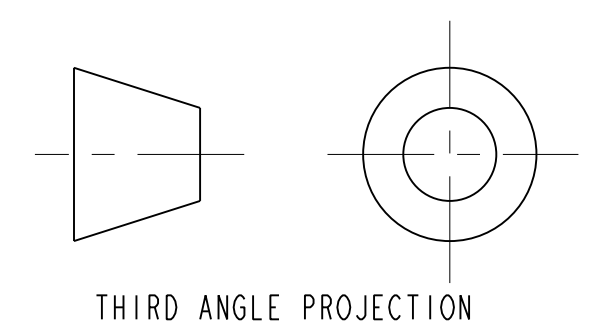
VIEW C-C



SECTION A-A
ROTATED 90° CW



DETAIL G
SCALE 3/4
2 PLACES

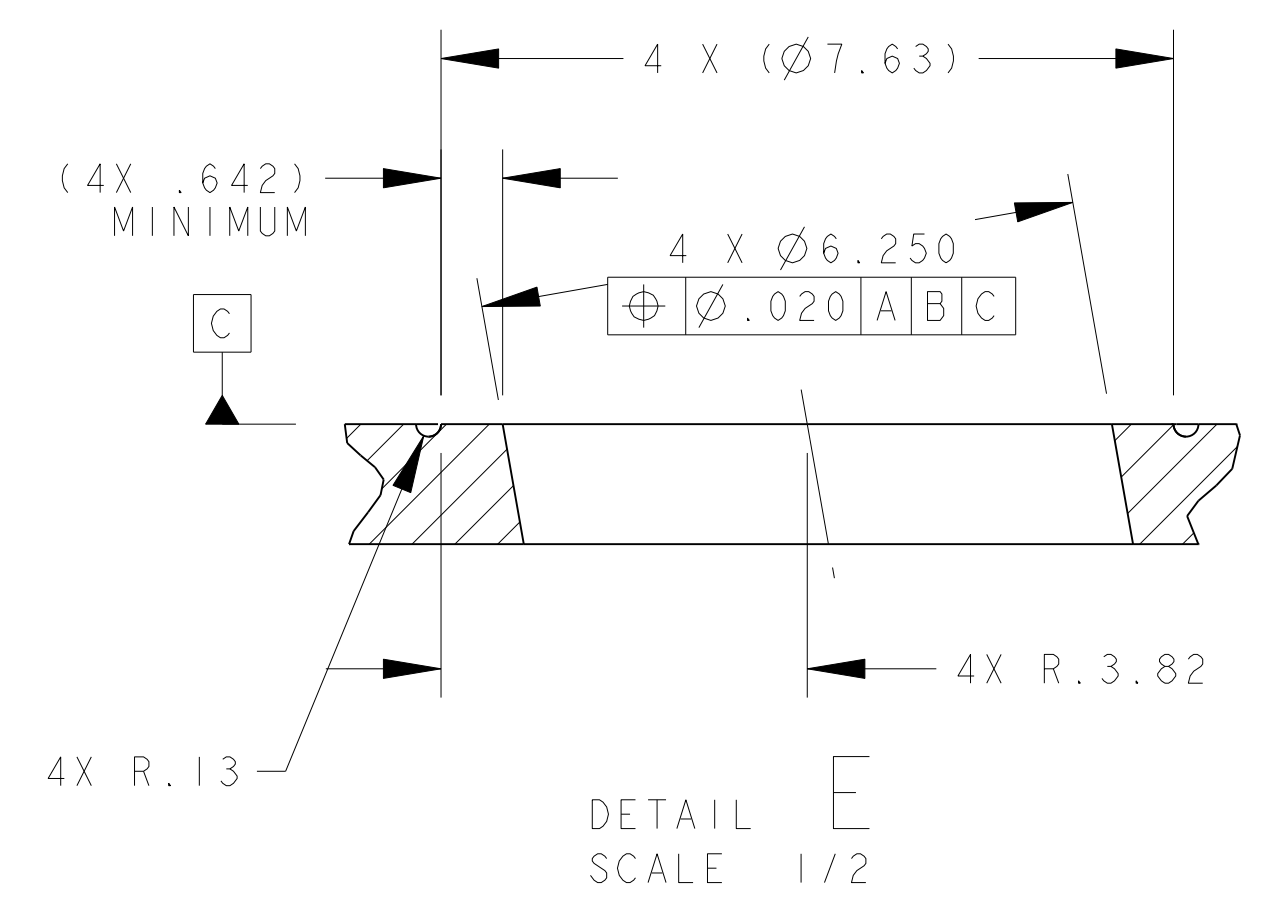
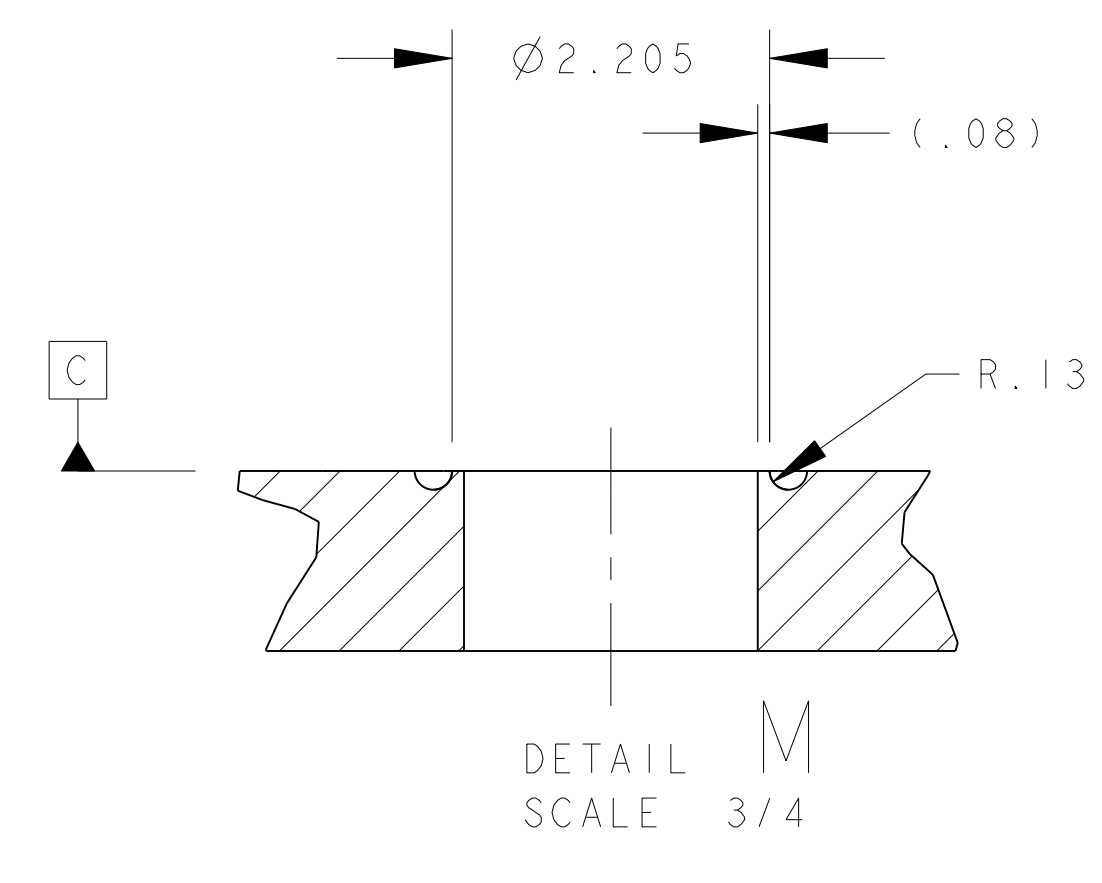
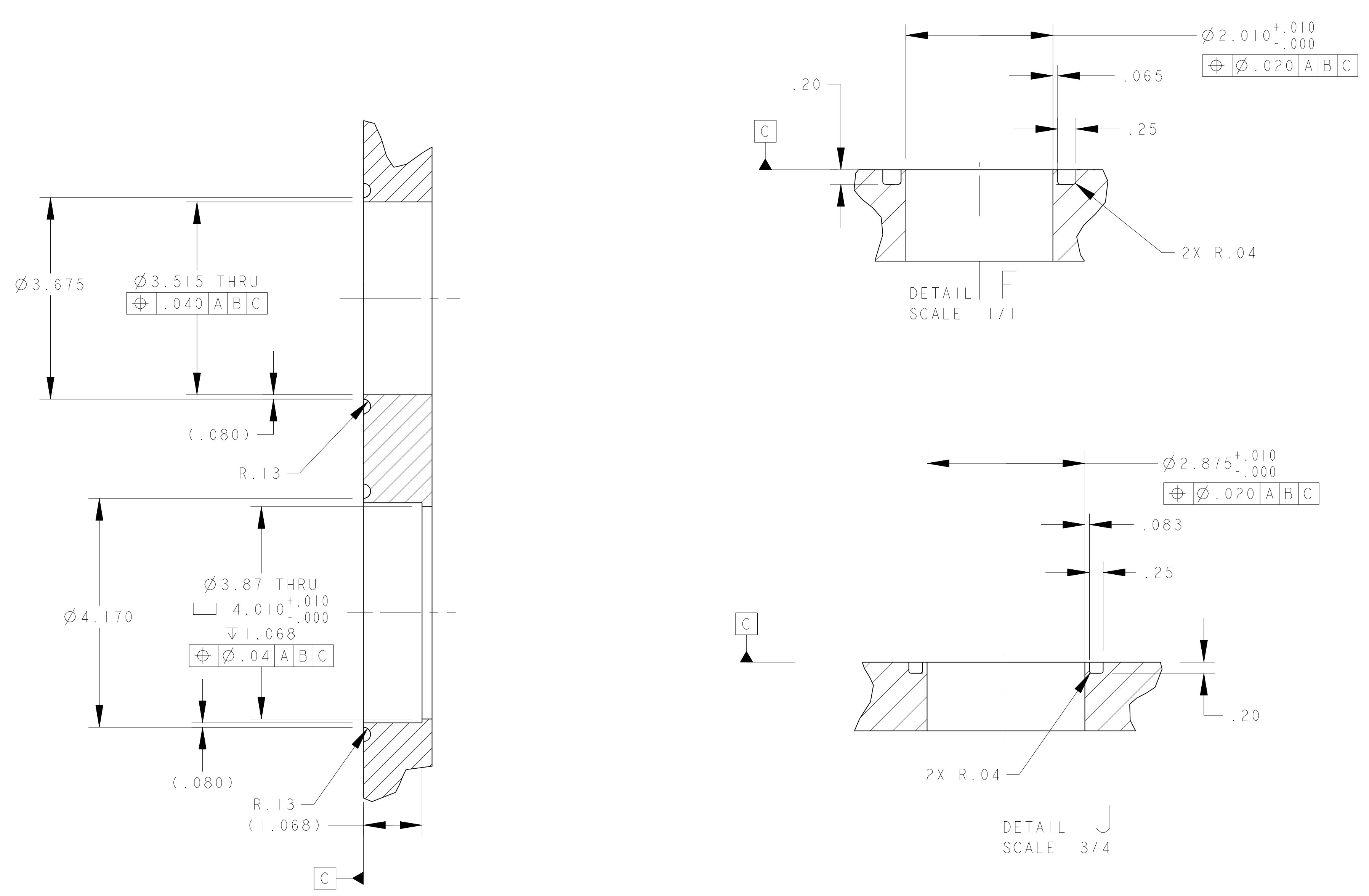


THIRD ANGLE PROJECTION

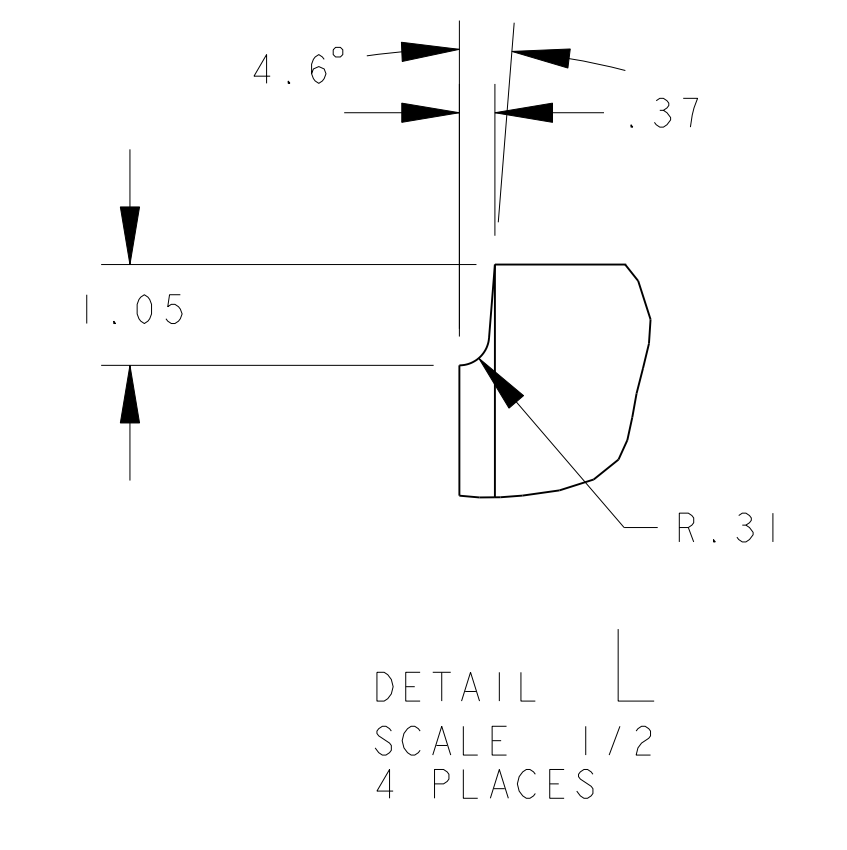
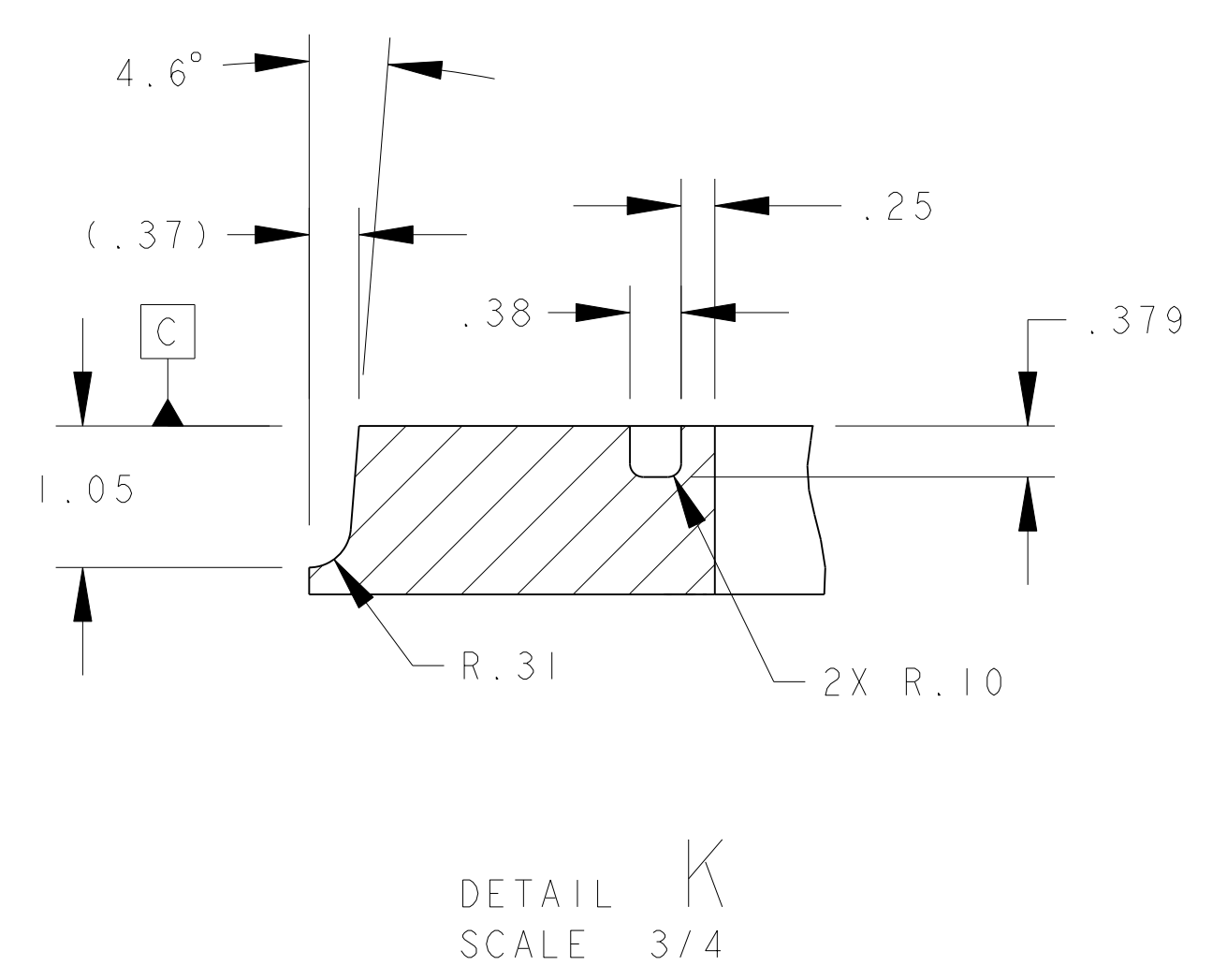
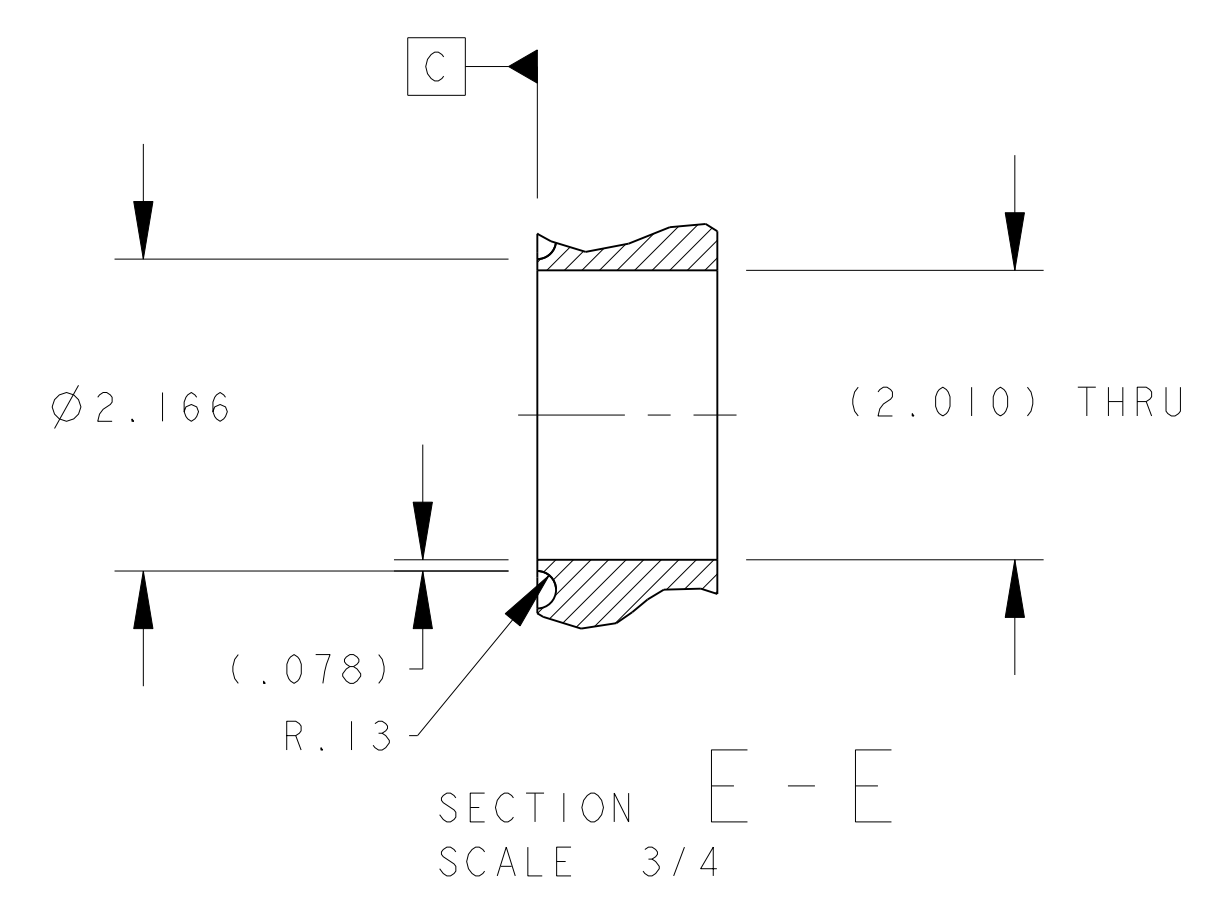
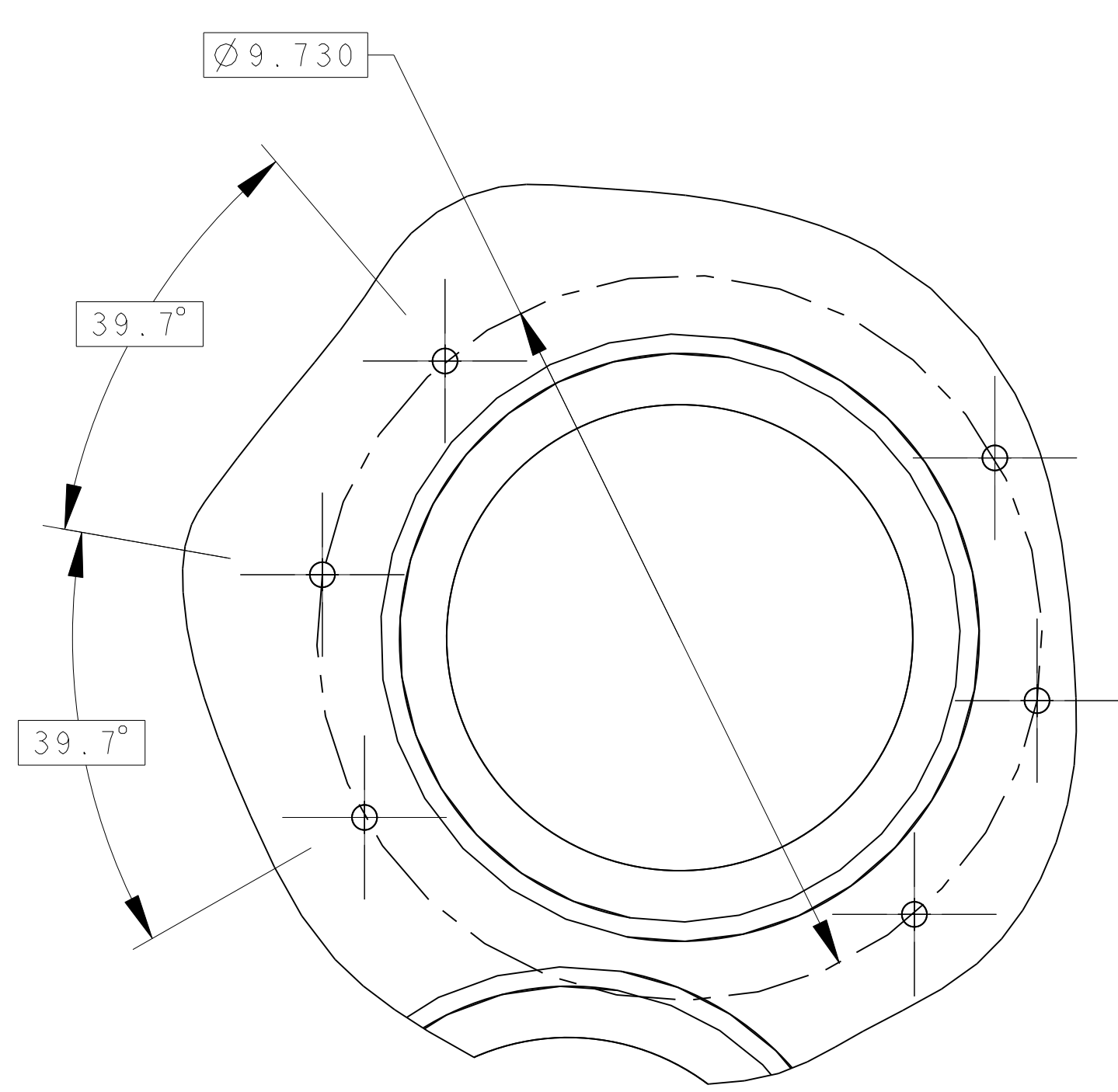
ERNEST ORLANDO LAWRENCE BERKELEY NATIONAL LABORATORY UNIVERSITY OF CALIFORNIA - BERKELEY					
LHC IR FEEDBOX VACUUM				TOP PLATE DF BX B IPI RIGHT	
MICROFILMED:	DWG. TYPE:	SHOWN ON:	SCALE:	DO NOT	FILE PRINTS
	PART	251152	1/5	SHEET 2 OF 3	
PATENT CLEAR:	DESIGN ACCT. NO.	CATEGORY CODE:	DWG. NO.	SIZE:	REV.
	ZSLCE2	LH2002	2518756	A	

8 7 6 5 4 3 2 1

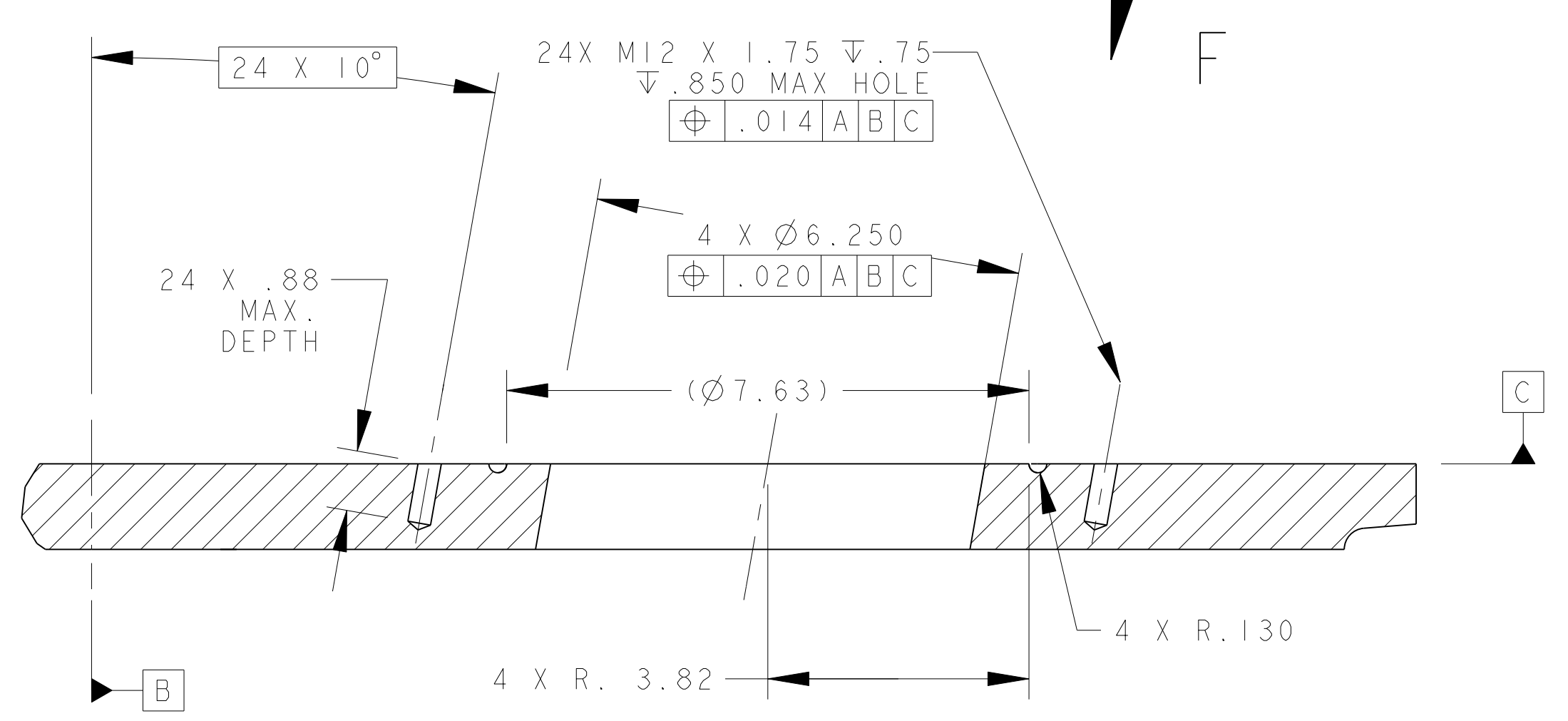
2518756 A 2



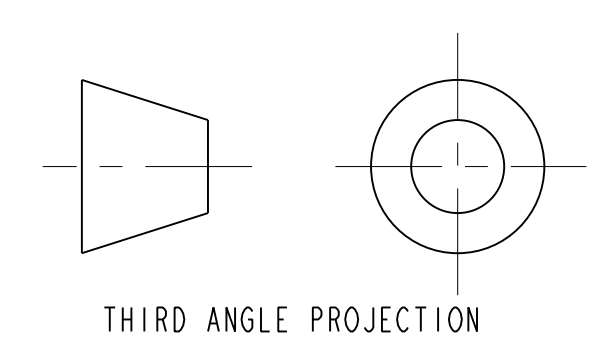
SECTION D-D
SCALE 3/4



VIEW F-F
SCALE 1/2
4 PLACES



DETAIL D
SCALE 1/2



ERNEST ORLANDO LAWRENCE BERKELEY NATIONAL LABORATORY UNIVERSITY OF CALIFORNIA - BERKELEY				LHC IR FEEDBOX VACUUM	
TOP PLATE DFEB B IPI RIGHT				SCALE 1/5	
MICROFILMED:	DWG. TYPE:	SHOWN ON:	PART:	SCALE:	DO NOT SCALE PRINTS
			251152	1/5	
PATENT CLEAR:			DESIGN ACCT. NO.:	CATEGORY CODE:	DWG. NO.:
			ZSLCE2	LH2002	2518756
				SHEET 3 OF 3	REV. A