

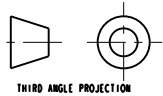
ITEM	PART NO	RECD	DESCRIPTION	MATERIAL
16	251099	I	SUPPORT, OOSA, DFBE	NEMA G10
15	251411	I	SUPPORT, O3 SIDE, DFBE / DFBE	NEMA G10
14	251200	I	SUPPORT, OOSB, DFBE	NEMA G10
13	251407	I	SUPPORT, CENTER PIPE, DFBE	-
12	251525	I	PIPE, CC2	-
11	251524	I	PIPE, CC3	-
10	251523	I	PIPE, A02	-
9	251510	I	PIPE, CC1	-
8	251510	I	PIPE, V AND LD ASSY	-
7	251505	I	PIPE, LD1	-
6	251503	I	PIPE, E1	-
5	251301	I	PIPE, M02	-
4	251527	I	PIPE, EX	-
3	251553	I	PIPE, C11	-
2	251552	I	PIPE WELDMNT, X0	-
1	251557	I	PIPE WELDMNT, L02 AND BUS DUCT	-

UNLESS OTHERWISE SPECIFIED
 1/8" ± 0.1 FRAC. ± 1/64
 1/16" ± 0.03 FINISH ± 1.00°
 1/8" ± 0.010 FINISH ± 1.00°
 DO NOT SCALE PRINT
 THREADS ARE CLASS 2
 COUNTER ENDS OF ALL SCREW THREADS 3/4"
 CUT POINTS - 1.5 THREAD RELIEF ON MACHINED THREADS
 BREAK EDGES (1/8" MIN. OR ROUNDED EDGE)
 REMOVE BURRS, BLEED SPATTER & LOOSE SCALE
 IN ACCORDANCE WITH ASME B11.3 & B1.1

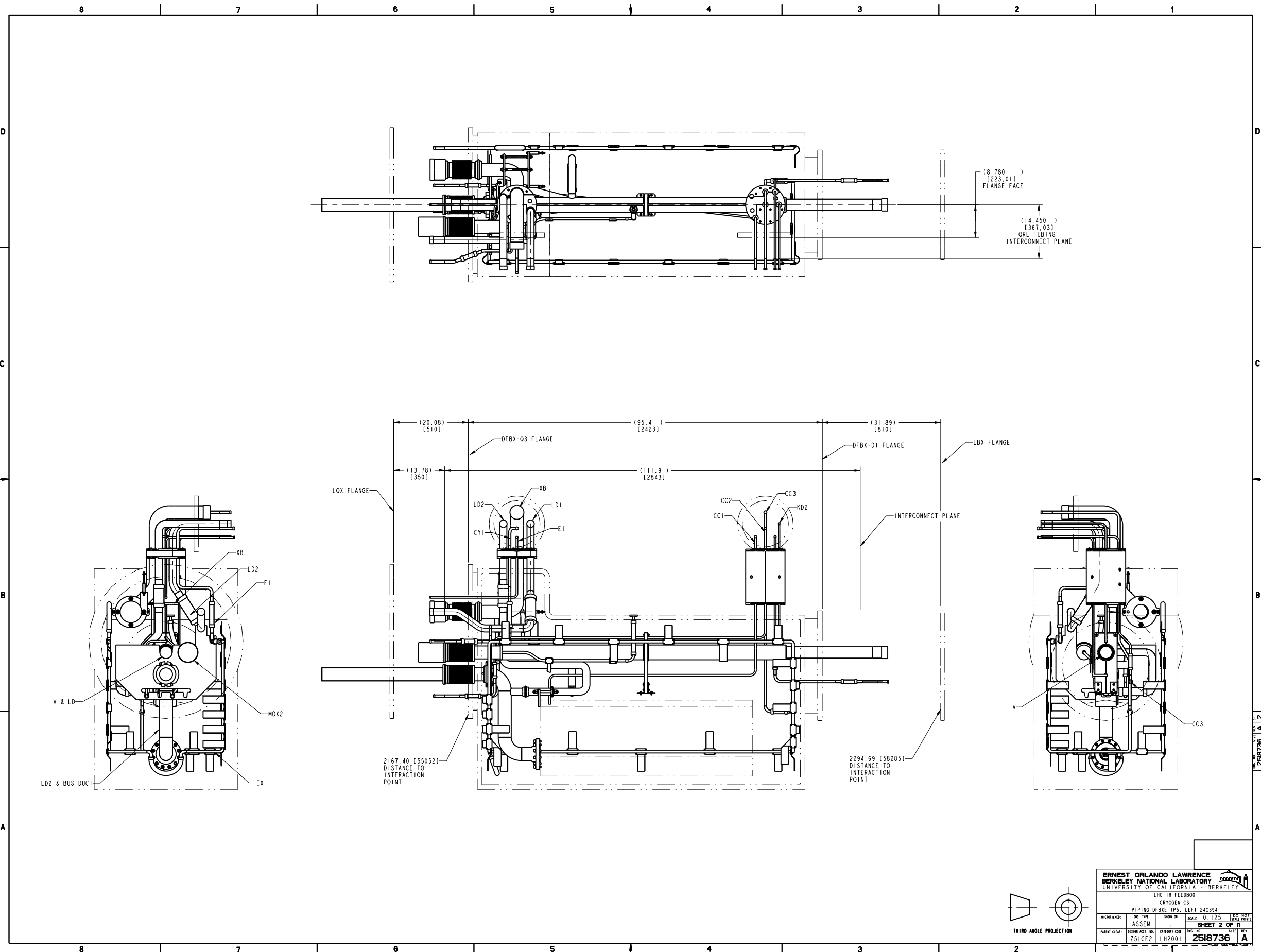
SHOP ORDERS
 DATE: 05-Apr-82
 DESIGNED BY: D. OSWATZ
 CHECKED BY: D. OSWATZ
 DATE: 11/25/82
 DATE: 11/25/82

ERNEST ORLANDO LAWRENCE
BERKELEY NATIONAL LABORATORY
 UNIVERSITY OF CALIFORNIA - BERKELEY
 LHC TR FEEDBOX
 CRYOGENICS
 PIPING DFBE IPS, LEFT 24C394
 MICROFILMED: DATE: 05-Apr-82
 ASSEM
 SCALE: 0.125
SHEET 1 OF 11
 DESIGN ACCT. NO.: Z5LCE2
 CATEGORY CODE: LH2001
 Dwg. No.: **2518736**
 SIZE: A

REV	DATE	DESCRIPTION
A	MJK DPO 11/25/82	INITIAL RELEASE
		CHANGES



2518736 A 11

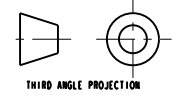


ERNEST ORLANDO LAWRENCE
 BERKELEY NATIONAL LABORATORY
 UNIVERSITY OF CALIFORNIA - BERKELEY

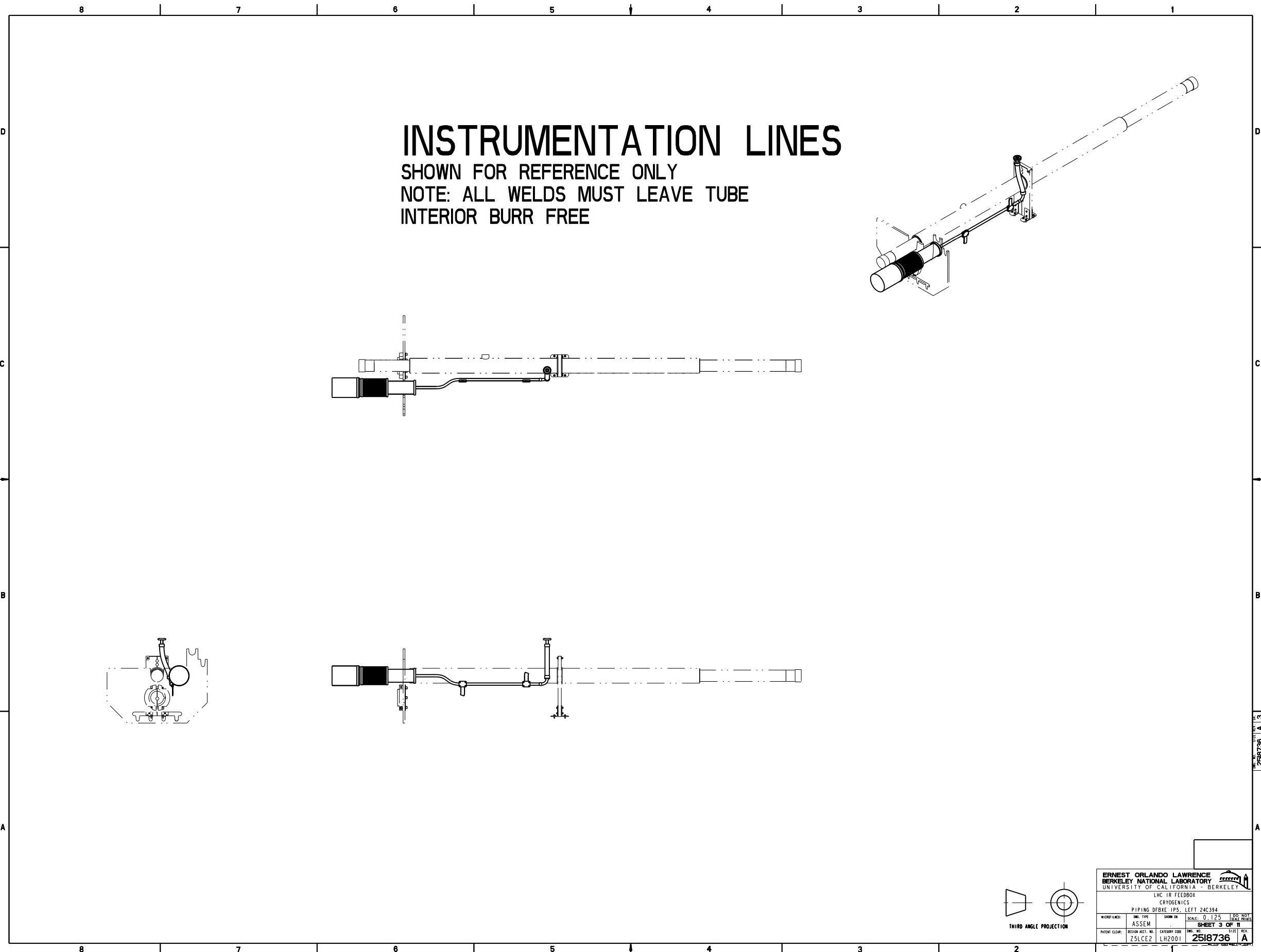
LHC TR FEEDBOX
 CRYOGENICS
 PIPING DFBX-IPS, LEFT 24C394

W/PROF/LINE:	ENG. TYPE:	SHOWN IN:	SCALE:
	ASSEM		0.125 (1:8)
PATENT CLEAR:	DESIGN ACCT. NO.:	CATEGORY CODE:	ENG. NO.:
	Z5LCE2	LH2001	2518736

SHEET 2 OF 11
 SIZE: A

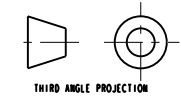
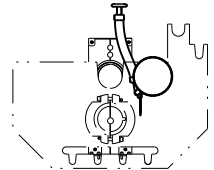


2518736 A 12



INSTRUMENTATION LINES

SHOWN FOR REFERENCE ONLY
 NOTE: ALL WELDS MUST LEAVE TUBE
 INTERIOR BURR FREE

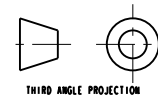
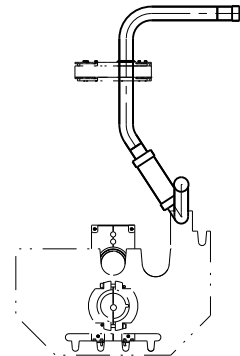
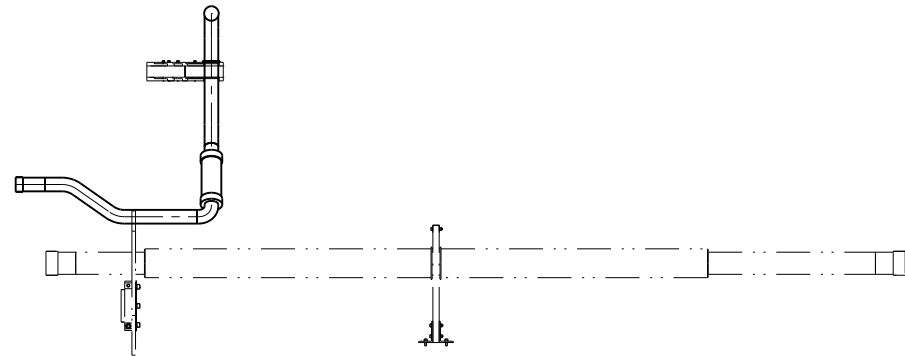
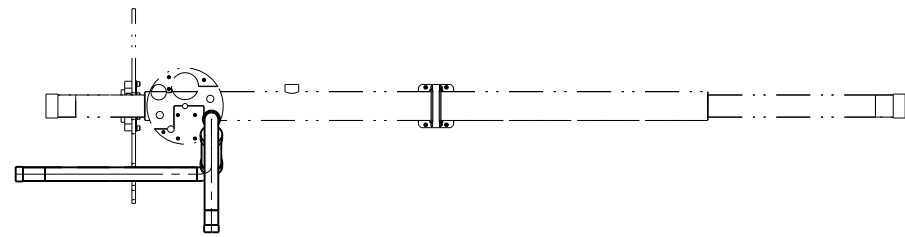
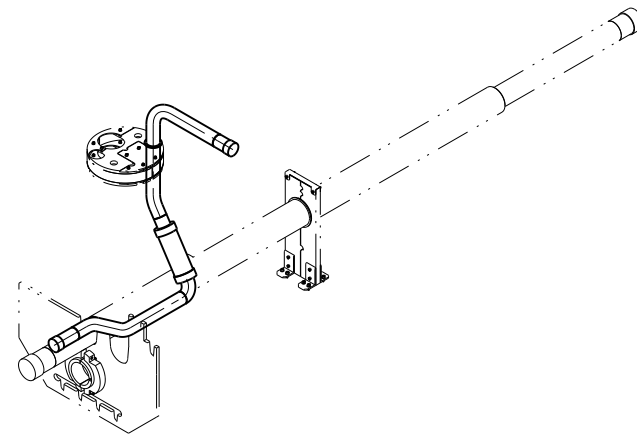


ERNEST ORLANDO LAWRENCE BERKELEY NATIONAL LABORATORY UNIVERSITY OF CALIFORNIA - BERKELEY			
LHC TR FEEDBOX CRYOGENICS			
PIPING DFBKE IPS, LEFT 24C394			
MICROFILMED: ASSEM	DWG. TYPE: ASSEM	DRAWN BY: LH2001	SCALE: 0.125 SHEET 3 OF 11 2518736 A
PATENT CLEAR: ZSLCEZ	DESIGN ACCT. NO.: LH2001	CATEGORY CODE: LH2001	DWG. NO.: 2518736 REV. A

2518736 A 13

LD LINES

SHOWN FOR REFERENCE ONLY

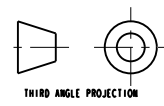
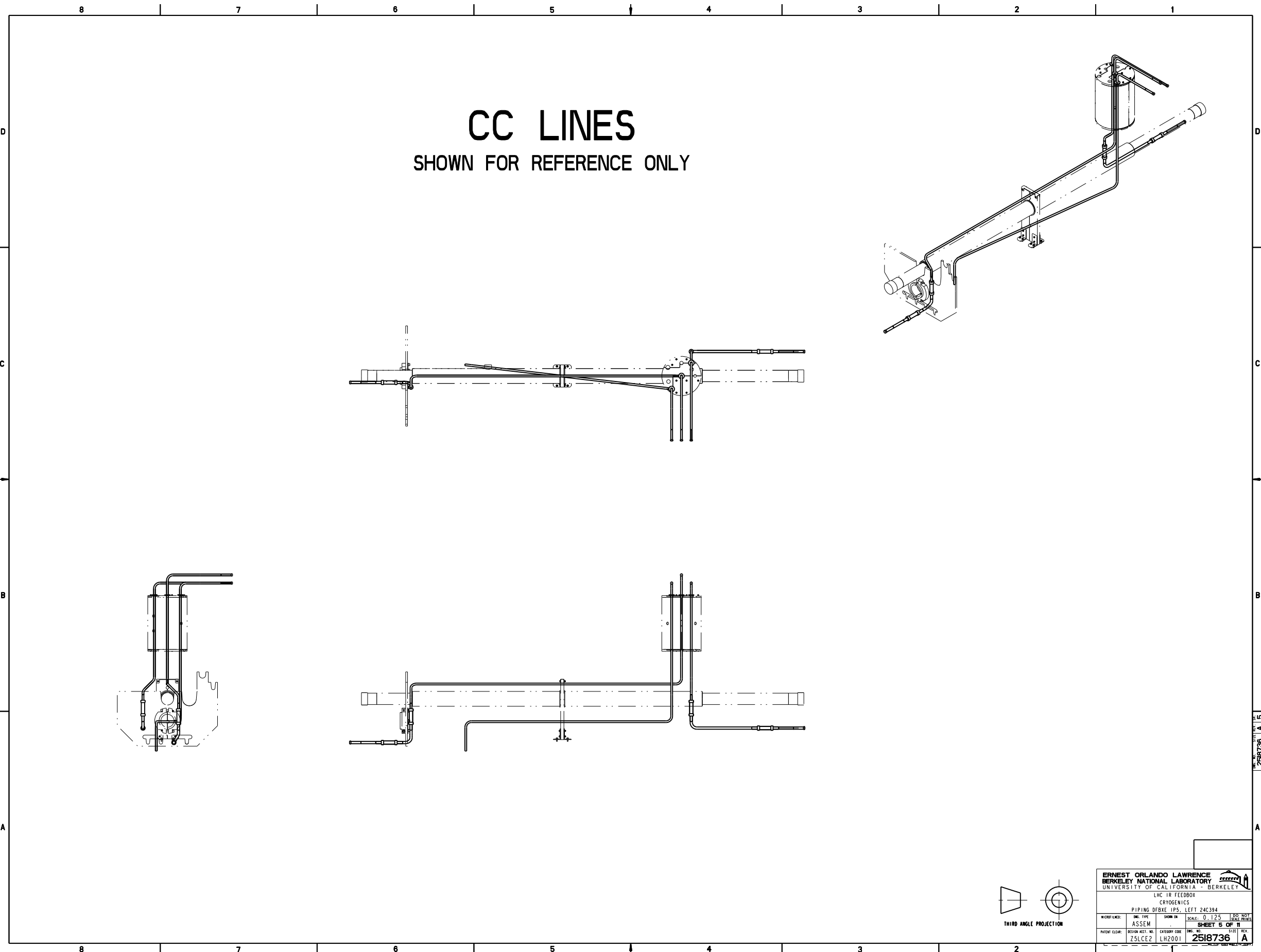


ERNEST ORLANDO LAWRENCE BERKELEY NATIONAL LABORATORY UNIVERSITY OF CALIFORNIA - BERKELEY			
LHC TR FEEDBOX CRYOGENICS			
PIPING DFBKE-IPS, LEFT 24C394			
MICROFILMED: ASSEM	DWG. TYPE: ASSEM	DRAWN BY: LH2001	SCALE: 0.125 SHEET 4 OF 11
PATENT CLEAR: ZSLCEZ	DESIGN ACCT. NO.: LH2001	CATEGORY CODE: LH2001	DWG. NO.: 2518736 SIZE: A

2518736 A 4

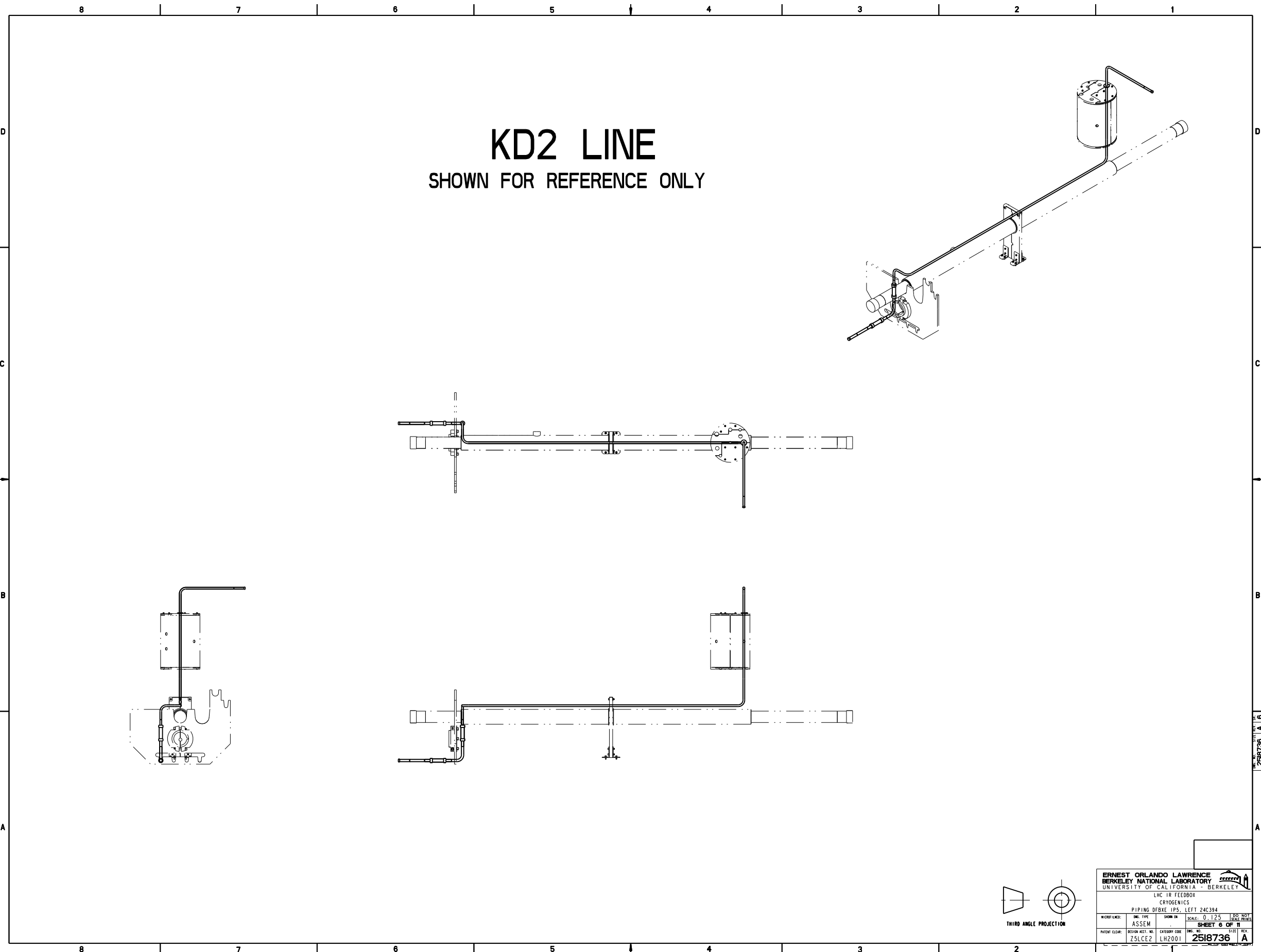
CC LINES

SHOWN FOR REFERENCE ONLY

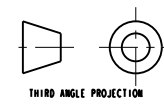


ERNEST ORLANDO LAWRENCE BERKELEY NATIONAL LABORATORY UNIVERSITY OF CALIFORNIA - BERKELEY			
LHC TR FEEDBOX CRYOGENICS			
PIPING DFBKE-IPS, LEFT 24C394			
MICROFILMED: ASSEM	DWG. TYPE: ASSEM	DRAWN BY: LH2001	SCALE: 0.125 (1/8"=1'-0")
SHEET 6 OF 11		SIZE: A	
PATENT CLEAR: 25LCE2			
2518736			

2518736 A 15

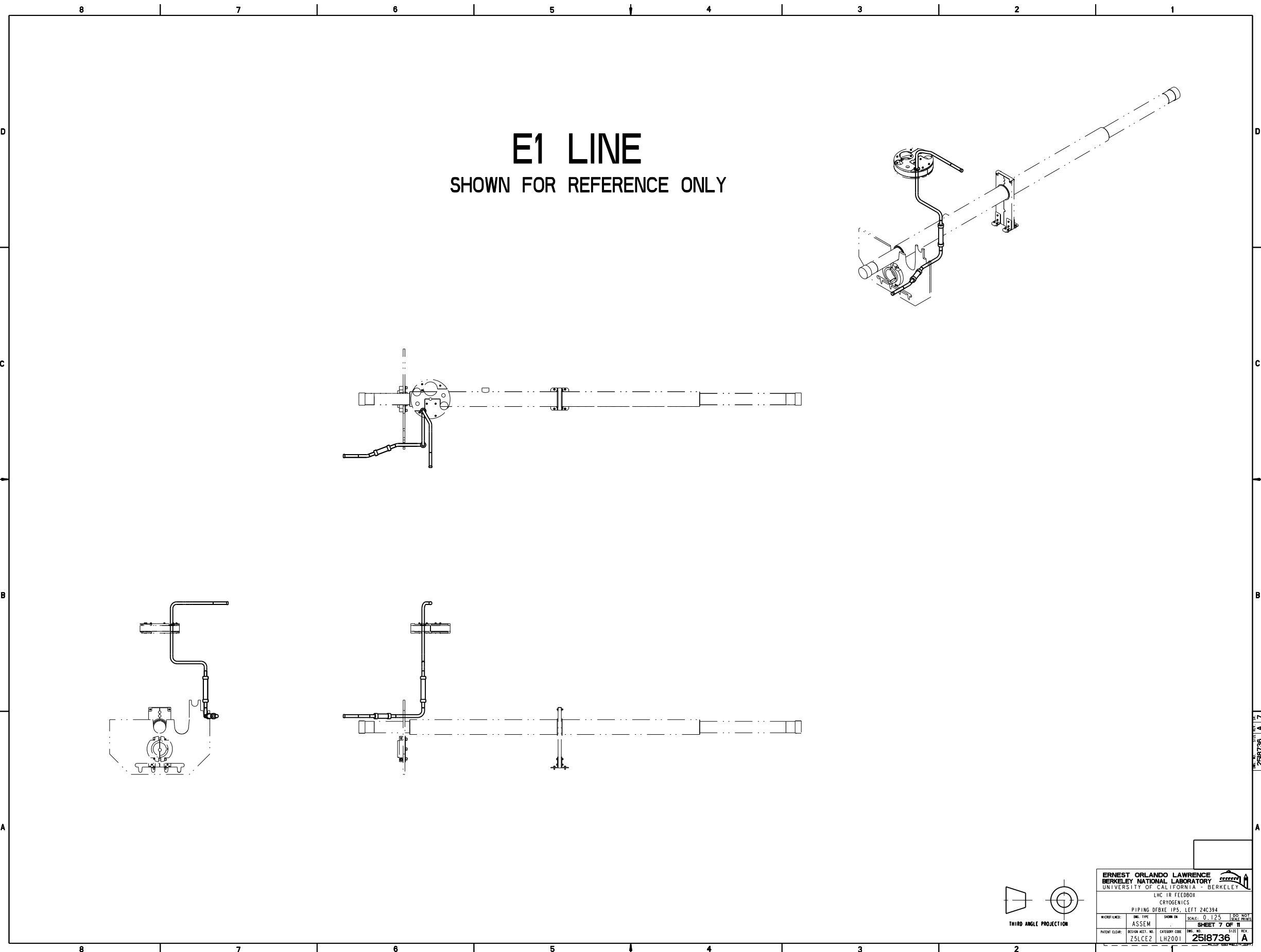


KD2 LINE
 SHOWN FOR REFERENCE ONLY

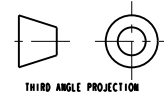


ERNEST ORLANDO LAWRENCE BERKELEY NATIONAL LABORATORY UNIVERSITY OF CALIFORNIA - BERKELEY			
LHC TR FEEDBOX CRYOGENICS			
PIPING DFBKE-IPS, LEFT 24C394			
MICROFILMED: ASSEM	DWG. TYPE: ASSEM	DRAWN BY: LH2001	SCALE: 0.125
SHEET 6 OF 11		SIZE: A	
PATENT CLEAR: ZSLCEZ	DESIGN ACCT. NO.: LH2001	CATEGORY CODE: LH2001	DWG. NO.: 2518736

2518736 A 6



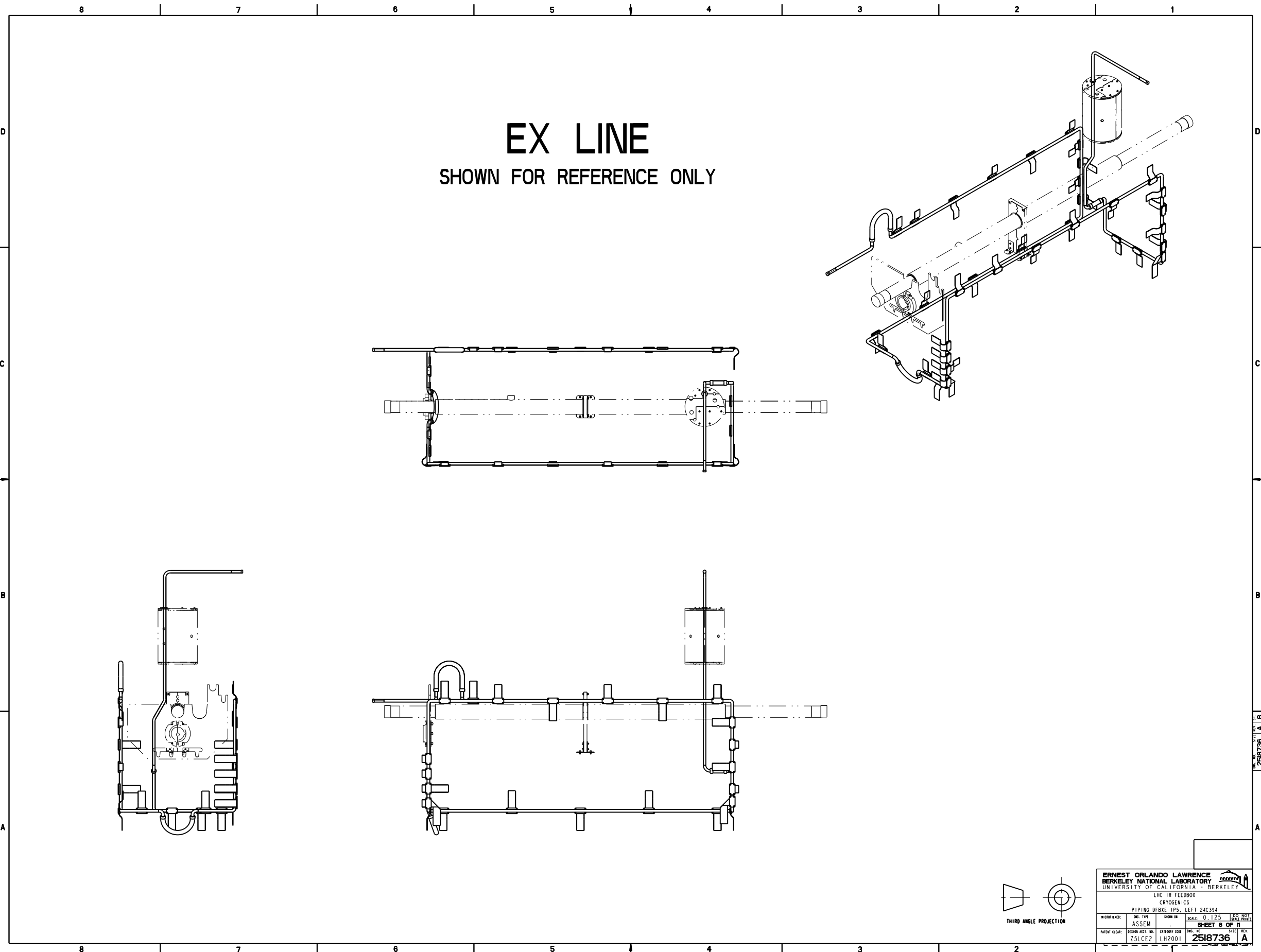
E1 LINE
 SHOWN FOR REFERENCE ONLY



THIRD ANGLE PROJECTION

ERNEST ORLANDO LAWRENCE BERKELEY NATIONAL LABORATORY <small>UNIVERSITY OF CALIFORNIA - BERKELEY</small>			
<small>LHC TR FEEDBOX</small> <small>CRYOGENICS</small>			
<small>PIPING DFBKE IPS, LEFT 24C394</small>			
<small>W/SHOP LINE:</small>	<small>ENG. TYPE:</small>	<small>SHOWN IN:</small>	<small>SCALE:</small>
	ASSEM		0.125 (1/8")
			<small>1/8" = 1'-0"</small>
SHEET 7 OF 11			
<small>PATENT CLEAR:</small>	<small>DESIGN ACCT. NO.:</small>	<small>CATEGORY CODE:</small>	<small>ENG. NO.:</small>
	Z5LCE2	LH2001	2518736
			<small>REV.:</small>
			A

2518736 A 17



EX LINE
SHOWN FOR REFERENCE ONLY

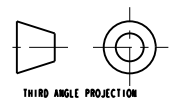
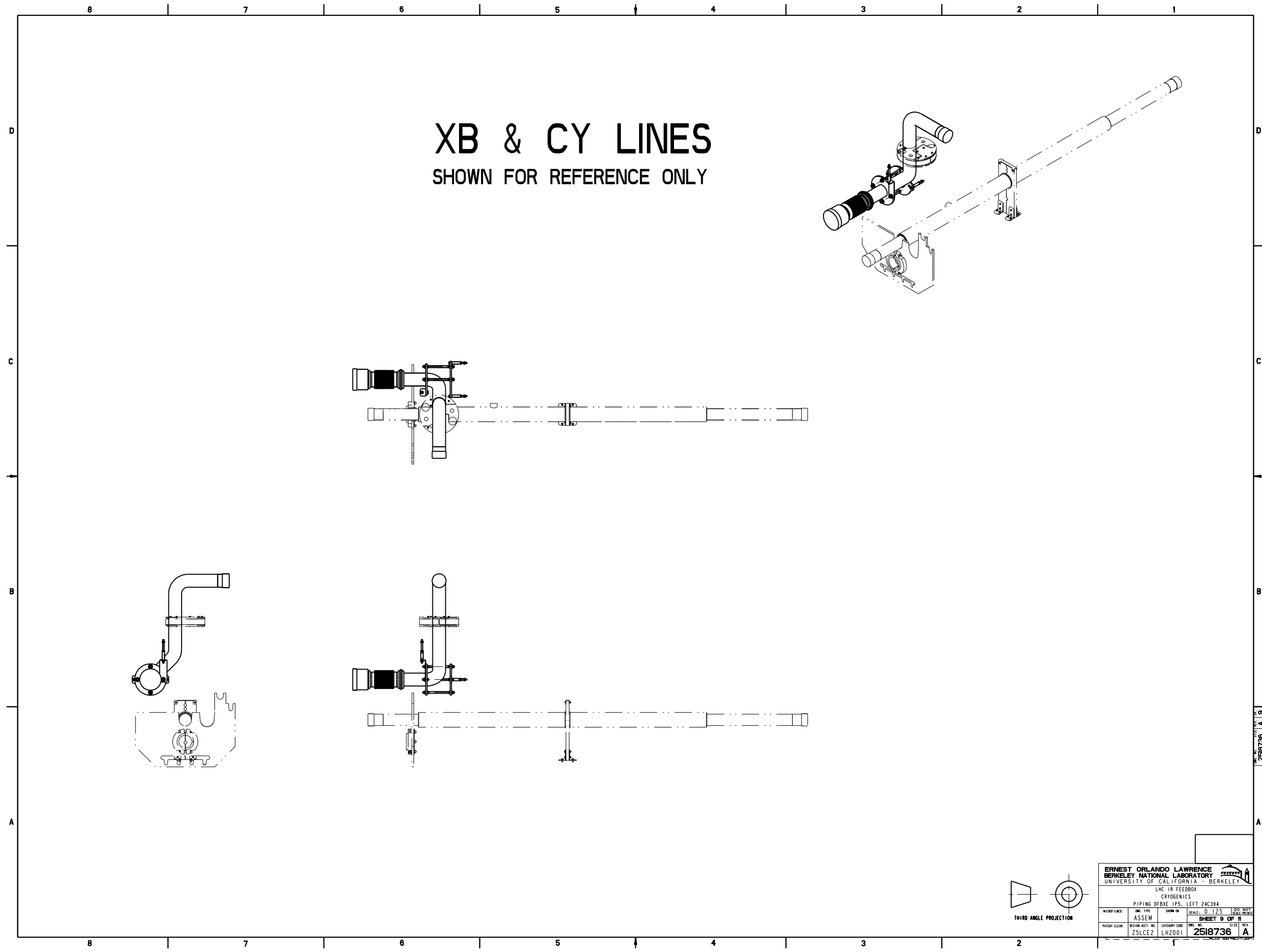
THIRD ANGLE PROJECTION

ERNEST ORLANDO LAWRENCE BERKELEY NATIONAL LABORATORY UNIVERSITY OF CALIFORNIA - BERKELEY			
LHC TR FEEDBOX CRYOGENICS			
PIPING DFBKE IPS, LEFT 24C394			
MICROFILMED: ASSEM	DWG. TYPE: ASSEM	DRAWN BY: LH2001	SCALE: 0.125 SHEET 8 OF 11 2518736 A
PATENT CLEAR: ZSLCEZ	DESIGN ACCT. NO.: LH2001	CATEGORY CODE: LH2001	DWG. NO.: 2518736 SIZE: A

2518736 A B

XB & CY LINES

SHOWN FOR REFERENCE ONLY

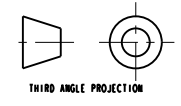
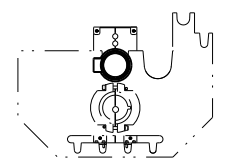
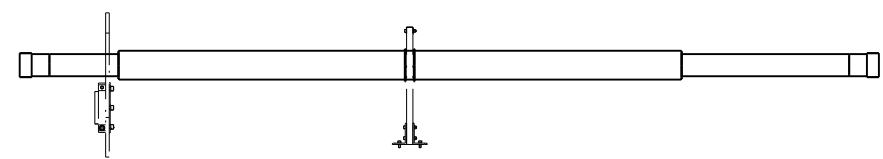
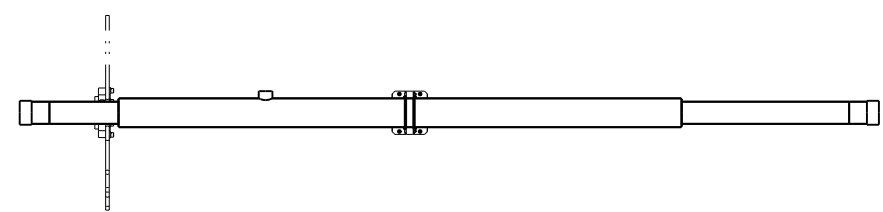
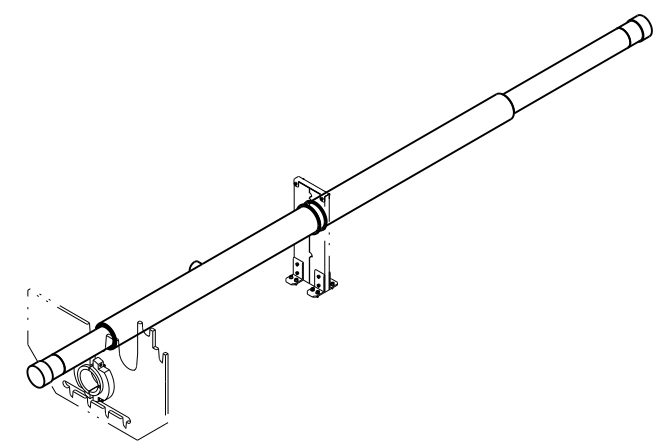


ERNEST ORLANDO LAWRENCE BERKELEY NATIONAL LABORATORY UNIVERSITY OF CALIFORNIA - BERKELEY			
LHC TR FEEDBOX CRYOGENICS			
PIPING DFBKE-1PS, LEFT 24C394			
MICROFILMED: ASSEM	DWG. TYPE: ASSEM	DRAWN BY: LH2001	SCALE: 0.125 (SCALE: 1/8")
SHEET 9 OF 11		2518736 A	
PATENT CLEAR: ZSLCE2	DESIGN ACCT. NO.: LH2001	CATEGORY CODE: LH2001	DWG. NO.: 2518736 REV. A

2518736 A 19

BEAM TUBE

SHOWN FOR REFERENCE ONLY

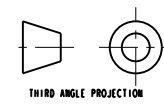
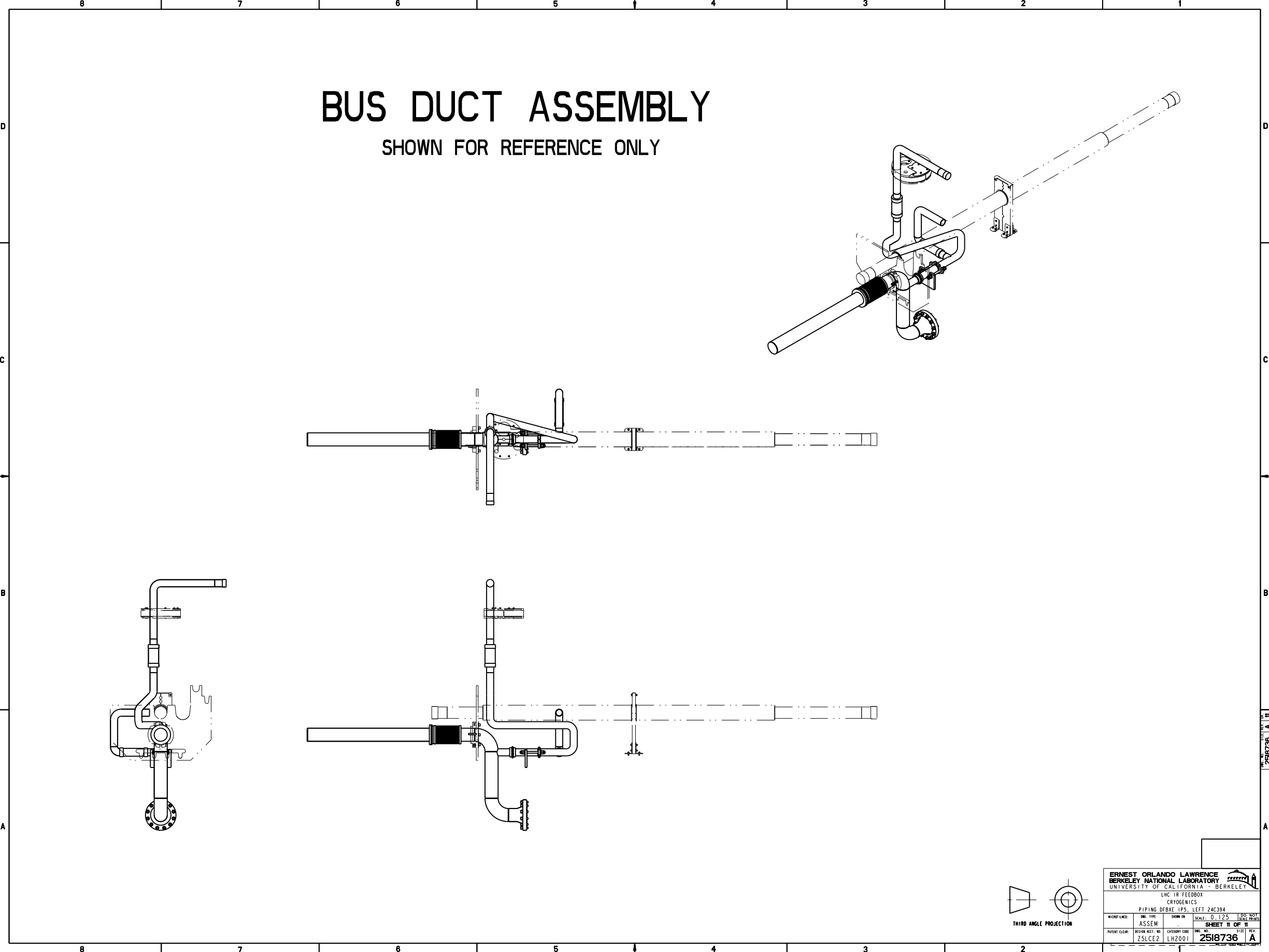


ERNEST ORLANDO LAWRENCE BERKELEY NATIONAL LABORATORY UNIVERSITY OF CALIFORNIA - BERKELEY			
LHC TR FEEDBOX CRYOGENICS			
PIPING DFBKE-1PS, LEFT 24C394			
MICROFILMED: ASSEM	DWG. TYPE: ASSEM	DRAWN BY: LH2001	SCALE: 0.125 SHEET NO OF 11 2518736
PATENT CLEAR: ZSLCEZ	DESIGN ACCT. NO.: LH2001	CATEGORY CODE: LH2001	DWG. NO.: 2518736 SIZE: A

2518736 A 10

BUS DUCT ASSEMBLY

SHOWN FOR REFERENCE ONLY



ERNEST ORLANDO LAWRENCE BERKELEY NATIONAL LABORATORY UNIVERSITY OF CALIFORNIA - BERKELEY			
LHC TR FEEDBOX CRYOGENICS			
PIPING DFBKE-IPS, LEFT 24C394			
MICROFILMED: ASSEM	DWG. TYPE: ASSEM	DRAWN BY: LH2001	SCALE: 0.125
SHEET II OF II		SIZE: A	
PATENT CLEAR: ZSLCEZ	DESIGN ACCT. NO.: LH2001	CATEGORY CODE: LH2001	DWG. NO.: 2518736

2518736 A II