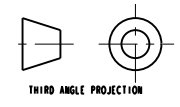
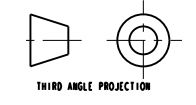
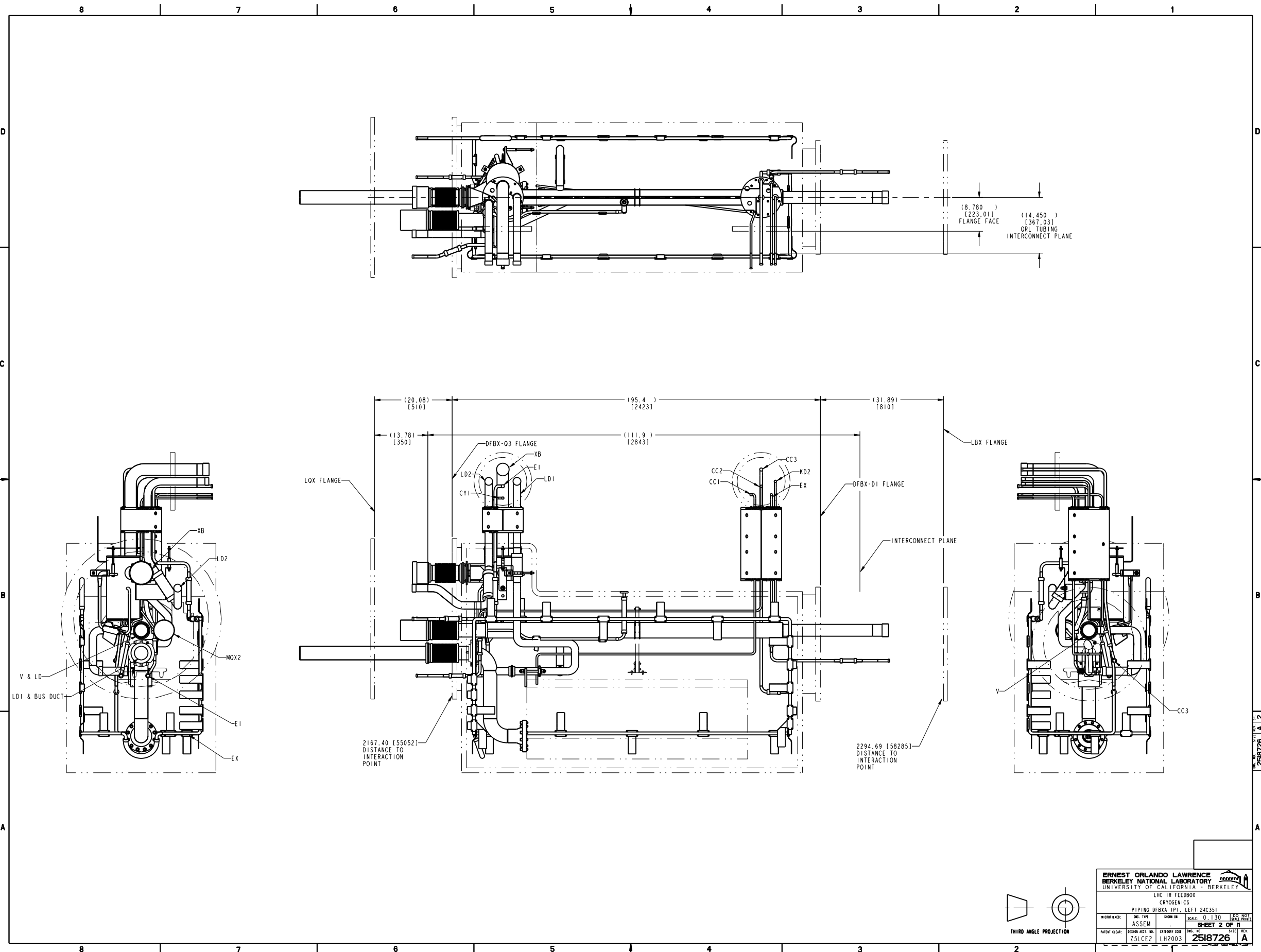


ITEM	PART NO	REQD	DESCRIPTION	MATERIAL
15	251412	1	SUPPORT, 03 SIDE, DFBA / DFBF	NEMA G10
14	251094	1	SUPPORT, 00SB, DFBA	NEMA G10
13	251093	1	SUPPORT, 00SA, DFBA	NEMA G10
12	251400	1	SUPPORT, CENTER PIPE, DFBA	-
11	251510	1	PIPE, V AND LD ASSY	-
10	251509	1	PIPE, MD2	-
9	251508	1	PIPE, CC3	-
8	251507	1	PIPE, CC2	-
7	251438	1	PIPE, LD2	-
6	251301	1	PIPE, MD2	-
5	251218	1	PIPE, CC1	-
4	251209	1	PIPE, E1	-
3	251502	1	PIPE, EF	-
2	251506	1	PIPE, 00 DFBA	-
1	251515	1	PIPE WELDMNT, LD1 AND BUS DUCT	-

UNLESS OTHERWISE SPECIFIED 1/8" ± 0.1 FRAC. ± 1/64 1/16" ± 0.03 ANGLES ± 1.00° 1/32" ± 0.010 FINISH 10/32"		SHOP ORDERS ALL DIMENSIONS TO BE SHOWN ON SHOP ORDERS ALL DIMENSIONS TO BE SHOWN ON SHOP ORDERS ALL DIMENSIONS TO BE SHOWN ON SHOP ORDERS		ERNEST ORLANDO LAWRENCE BERKELEY NATIONAL LABORATORY UNIVERSITY OF CALIFORNIA - BERKELEY	
DO NOT SCALE PRINT THREADS ARE CLASS 2 CENTER END OF ALL SCREW THREADS IS POINT		PROJECT: N/A DRAWING NO: 251502 DATE: 11/25/82 DESIGNED BY: D. OSWALD CHECKED BY: D. OSWALD		CRYOGENICS LHC TR FEEDBOX PIPING DFBA (PI, LEFT 24C351) SCALE: 0.125 SHEET 1 OF 11 2518726 A	
REVISIONS A MJK/DPO 11/25/82 INITIAL RELEASE REV. DATE CHANGES		DATE: 29-Mar-82 DATE: 11/25/82 DATE: 11/25/82		MICROFILMED: ENG. TYPE: SHOWN ON: ASSEM DESIGN ACCT. NO.: CATEGORY CODE: Z5LCE2 LH2003	

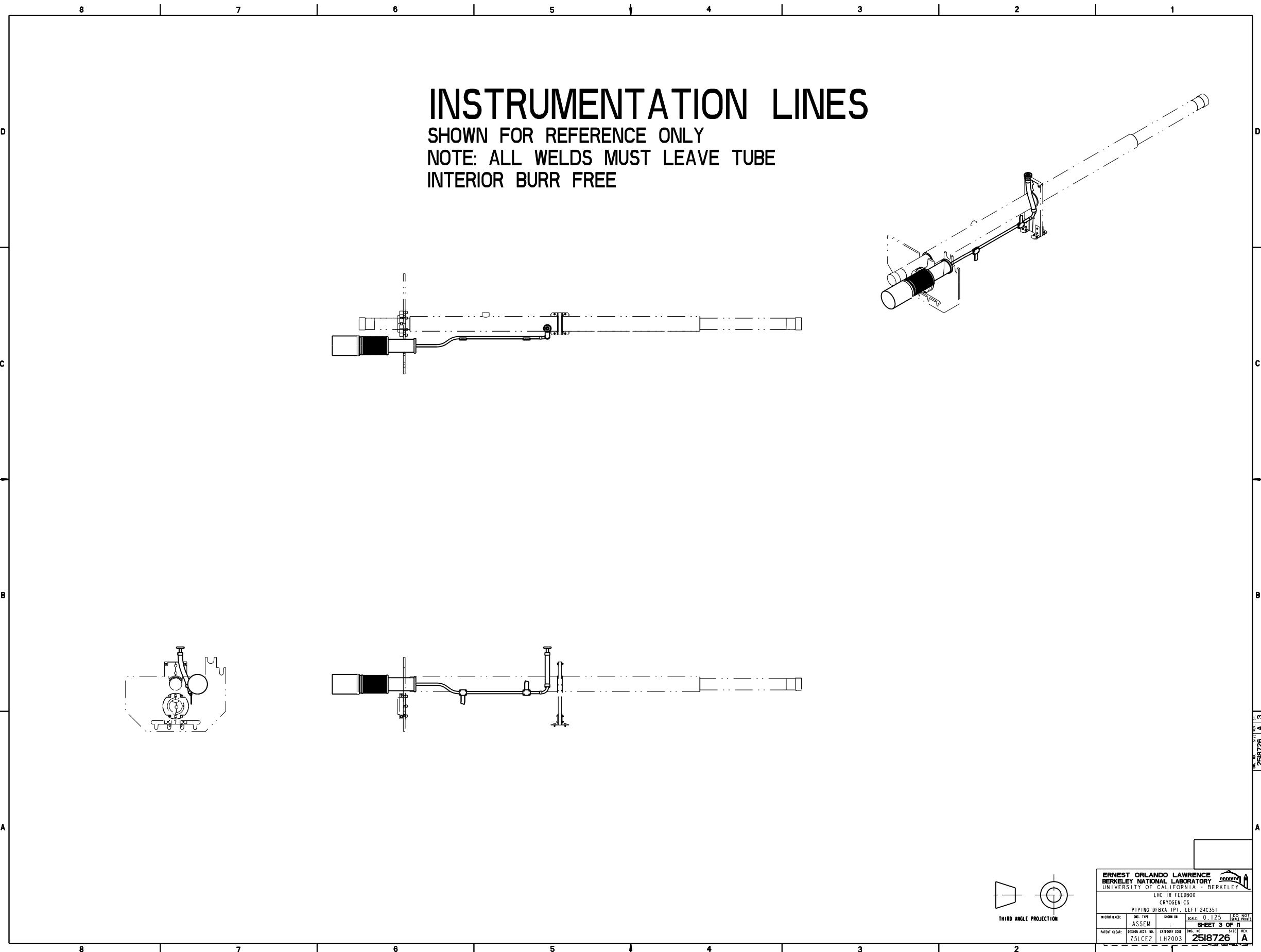


2518726 A 1



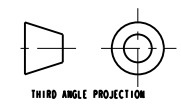
ERNEST ORLANDO LAWRENCE BERKELEY NATIONAL LABORATORY UNIVERSITY OF CALIFORNIA - BERKELEY			
LHC TR FEEDBOX CRYOGENICS			
PIPING DFBXA-IP1, LEFT 24C351			
W/PROP/ENGR:	DRG. TYPE:	SHOWN ON:	SCALE: 0.130 (SEE NOTE)
	ASSEM		
SHEET 2 OF 11			REV.:
PATENT CLEAR:	DESIGN ACCT. NO.:	CATEGORY CODE:	DRG. NO.:
Z5LCE2	LH2003		2518726 A

2518726 A 12



INSTRUMENTATION LINES

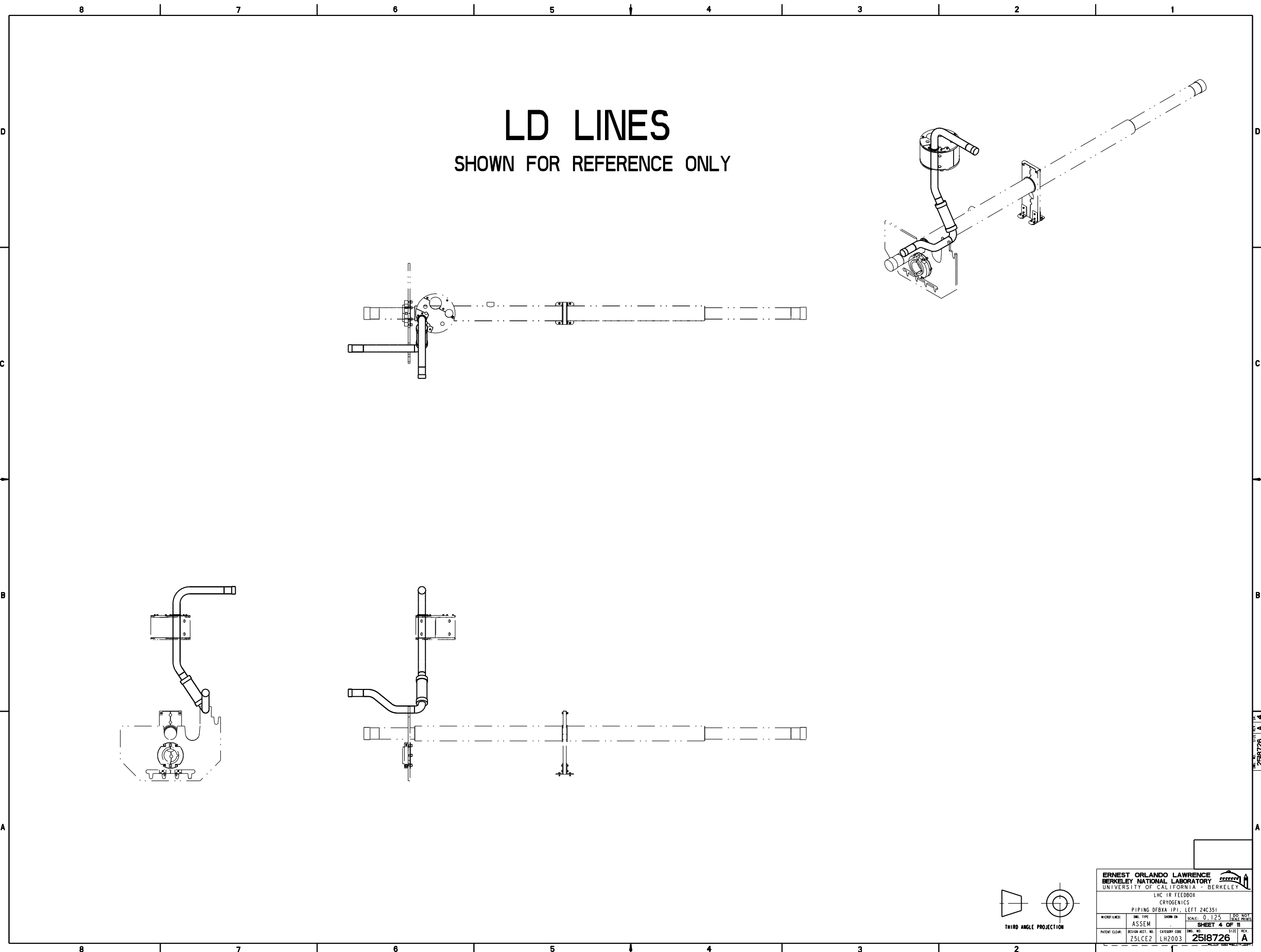
SHOWN FOR REFERENCE ONLY
 NOTE: ALL WELDS MUST LEAVE TUBE
 INTERIOR BURR FREE



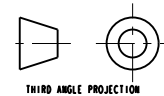
THIRD ANGLE PROJECTION

ERNEST ORLANDO LAWRENCE BERKELEY NATIONAL LABORATORY <small>UNIVERSITY OF CALIFORNIA - BERKELEY</small>			
LHC TR FEEDBOX CRYOGENICS			
PIPING DFBXA (PI) LEFT 24C351			
<small>W/PROP LINES:</small> ASSEM	<small>DRG. TYPE:</small> ASSEM	<small>SCALE:</small> 0.125	<small>DATE:</small> 10/25/00
SHEET 3 OF 11		<small>DESIGN NO.:</small> Z5LCE2	<small>REV.:</small> A
2518726		<small>DESIGN CODE:</small> LH2003	<small>DATE:</small> 10/25/00

2518726 A 3

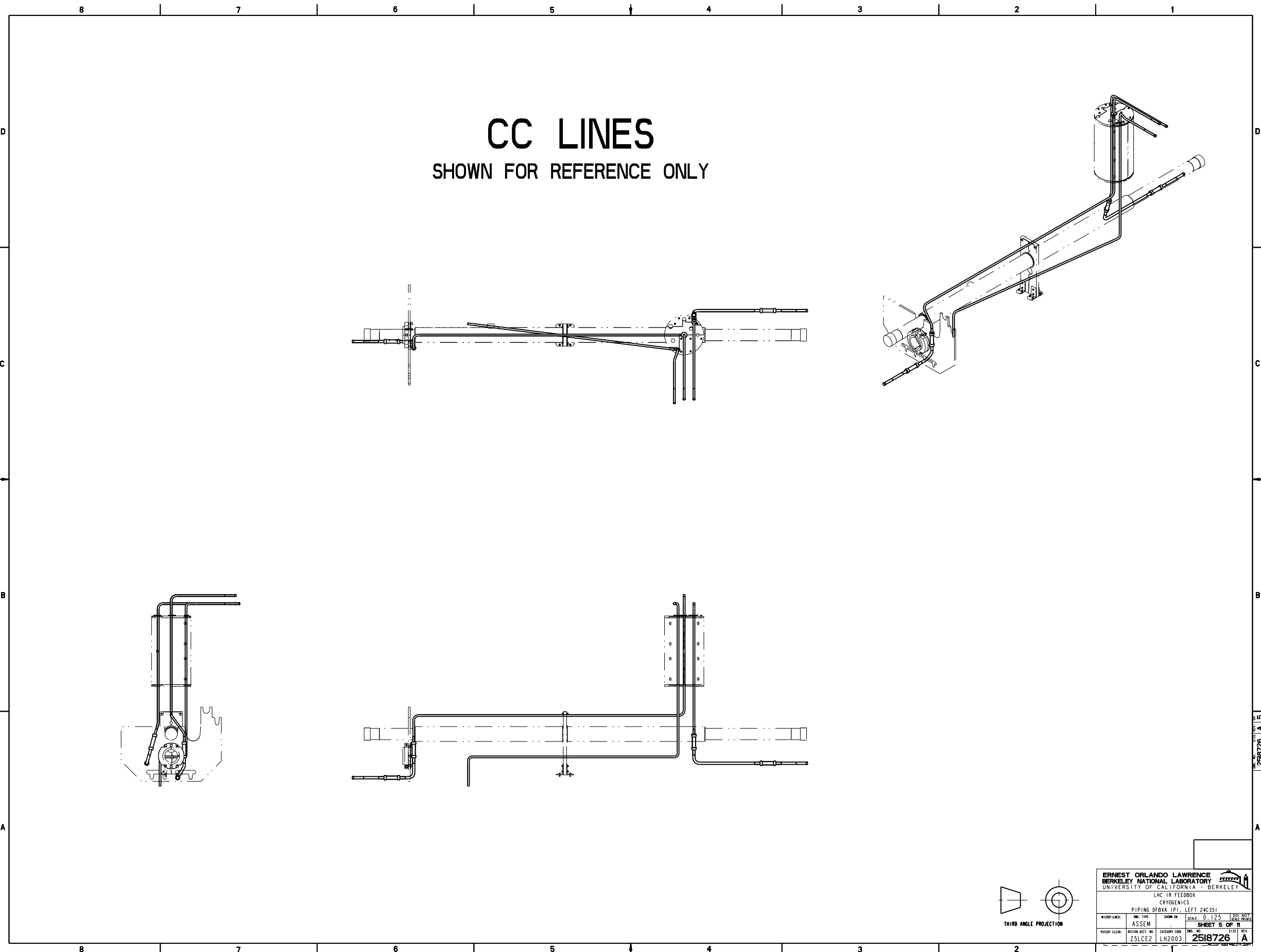


LD LINES
 SHOWN FOR REFERENCE ONLY



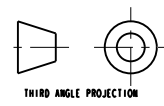
ERNEST ORLANDO LAWRENCE BERKELEY NATIONAL LABORATORY UNIVERSITY OF CALIFORNIA - BERKELEY			
LHC TR FEEDBOX CRYOGENICS			
PIPING DFBXA-IP1, LEFT 24C351			
MICROFILMED: ASSEM	DWG. TYPE: ASSEM	SHOWN IN: ASSEM	SCALE: 0.125 <small>(SCALE PERMITTED)</small>
SHEET 4 OF 11		SHEET 4 OF 11	
PATENT CLEAR: ZSLCEZ	DESIGN ACCT. NO.: LH2003	CATEGORY CODE: LH2003	DWG. NO.: 2518726 SIZE: A

2518726 A 4



CC LINES

SHOWN FOR REFERENCE ONLY

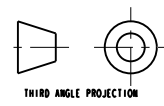
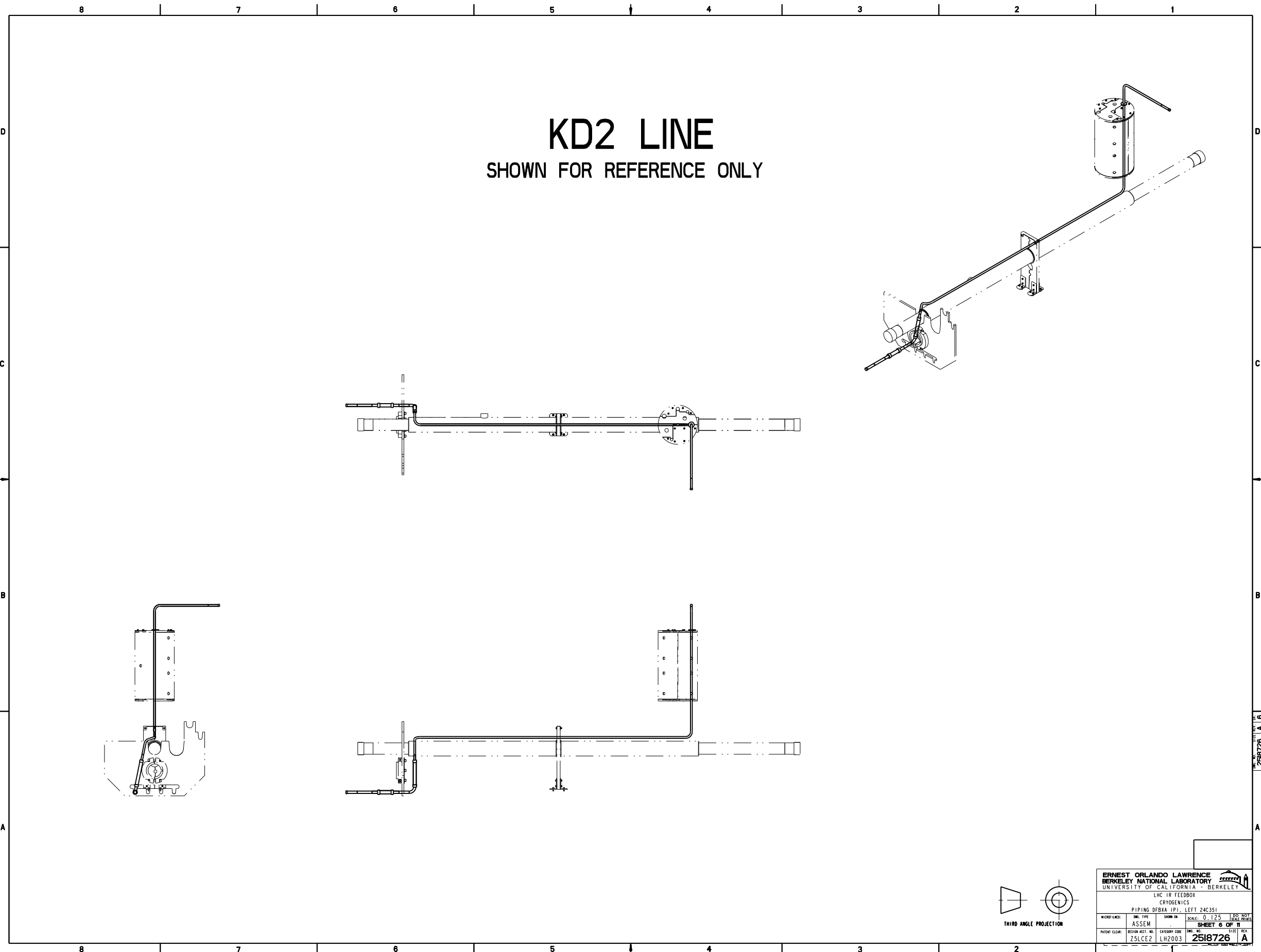


ERNEST ORLANDO LAWRENCE BERKELEY NATIONAL LABORATORY UNIVERSITY OF CALIFORNIA - BERKELEY			
LHC TR FEEDBOX CRYOGENICS			
PIPING DFBXA (PI), LEFT 24C351			
MICROFILMED: ASSEM	DWG. TYPE: ASSEM	SHOWN IN: ASSEM	SCALE: 0.125 (1/8" = 1'-0")
SHEET 6 OF 11		SHEET 6 OF 11	
PATENT CLEAR: Z5LCE2	DESIGN ACCT. NO.: LH2003	CATEGORY CODE: LH2003	DWG. NO.: 2518726
			SIZE: A

2518726 A 15

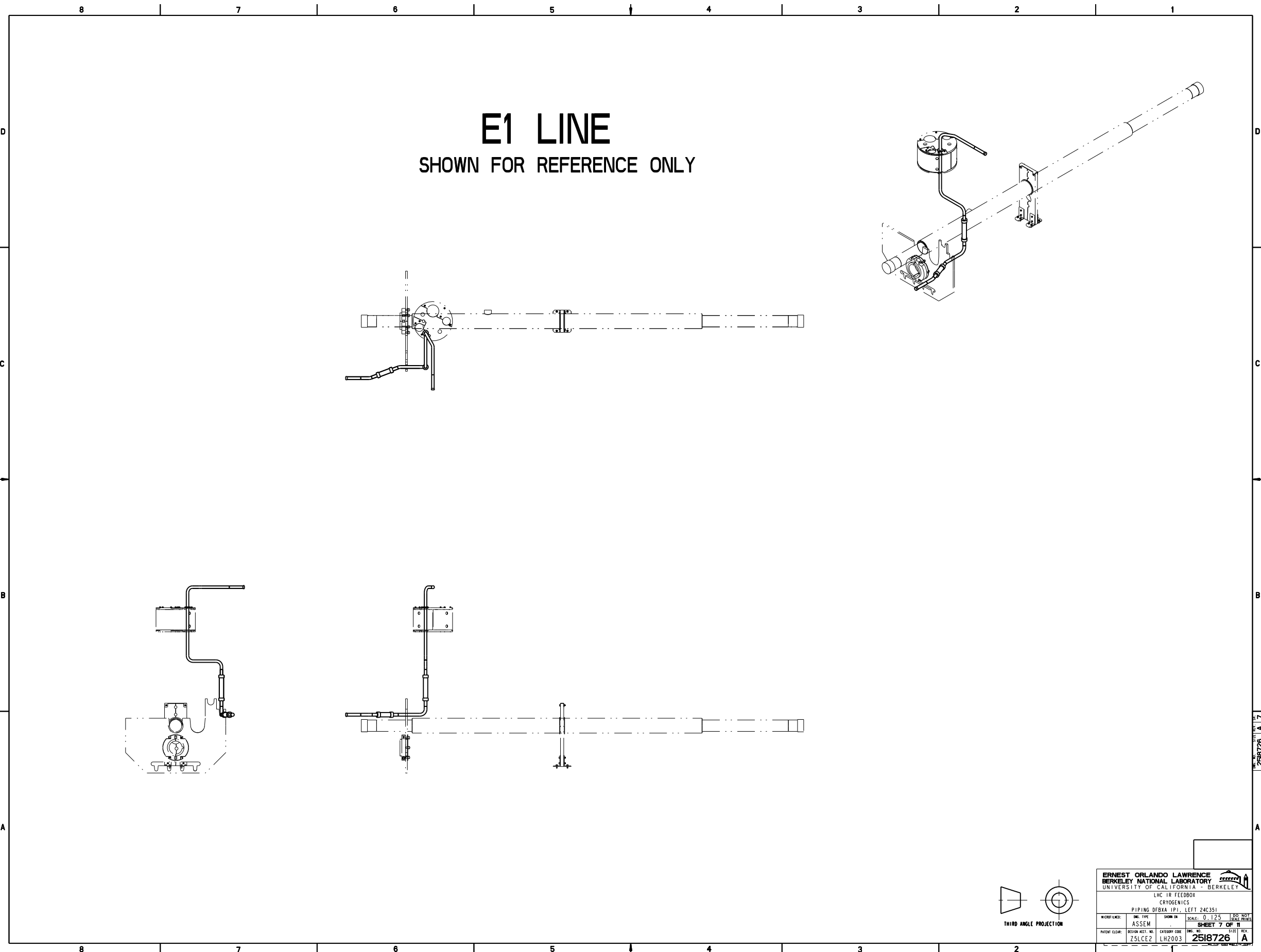
KD2 LINE

SHOWN FOR REFERENCE ONLY

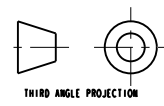


ERNEST ORLANDO LAWRENCE BERKELEY NATIONAL LABORATORY UNIVERSITY OF CALIFORNIA - BERKELEY			
LHC TR FEEDBOX CRYOGENICS			
PIPING DFBXA-1PI, LEFT 24C351			
MICROFILMED: ASSEM	DWG. TYPE: ASSEM	DRAWN BY: LH2003	SCALE: 0.125 (SCALE PERMITTED)
SHEET 6 OF 11		2518726	
PATENT CLEAR: ZSLCEZ	DESIGN ACCT. NO.: LH2003	CATEGORY CODE: LH2003	DWG. NO.: 2518726
		SIZE: A	

2518726 A 6

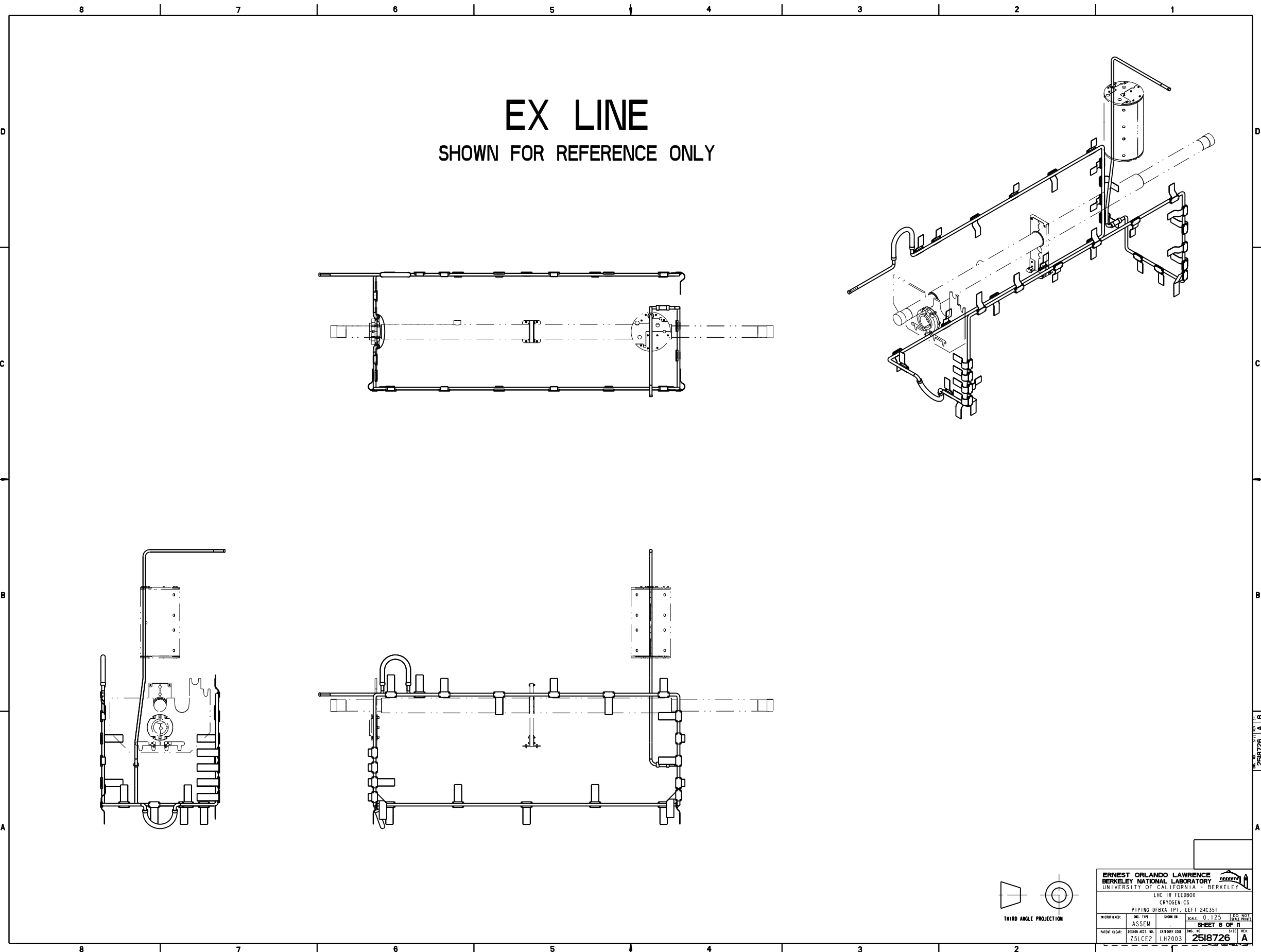


E1 LINE
 SHOWN FOR REFERENCE ONLY

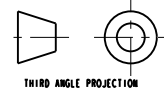


ERNEST ORLANDO LAWRENCE BERKELEY NATIONAL LABORATORY UNIVERSITY OF CALIFORNIA - BERKELEY			
LHC TR FEEDBOX CRYOGENICS			
PIPING DFBXA-1P1, LEFT 24C351			
MICROFILMED: ASSEM	DWG. TYPE: ASSEM	DRAWN BY: LH2003	SCALE: 0.125 SHEET 7 OF 11
PATENT CLEAR: ZSLCEZ	DESIGN ACCT. NO.: 2518726	CATEGORY CODE: LH2003	DWG. NO.: 2518726 SIZE: A

2518726 A 17



EX LINE
SHOWN FOR REFERENCE ONLY

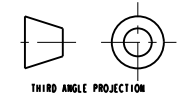
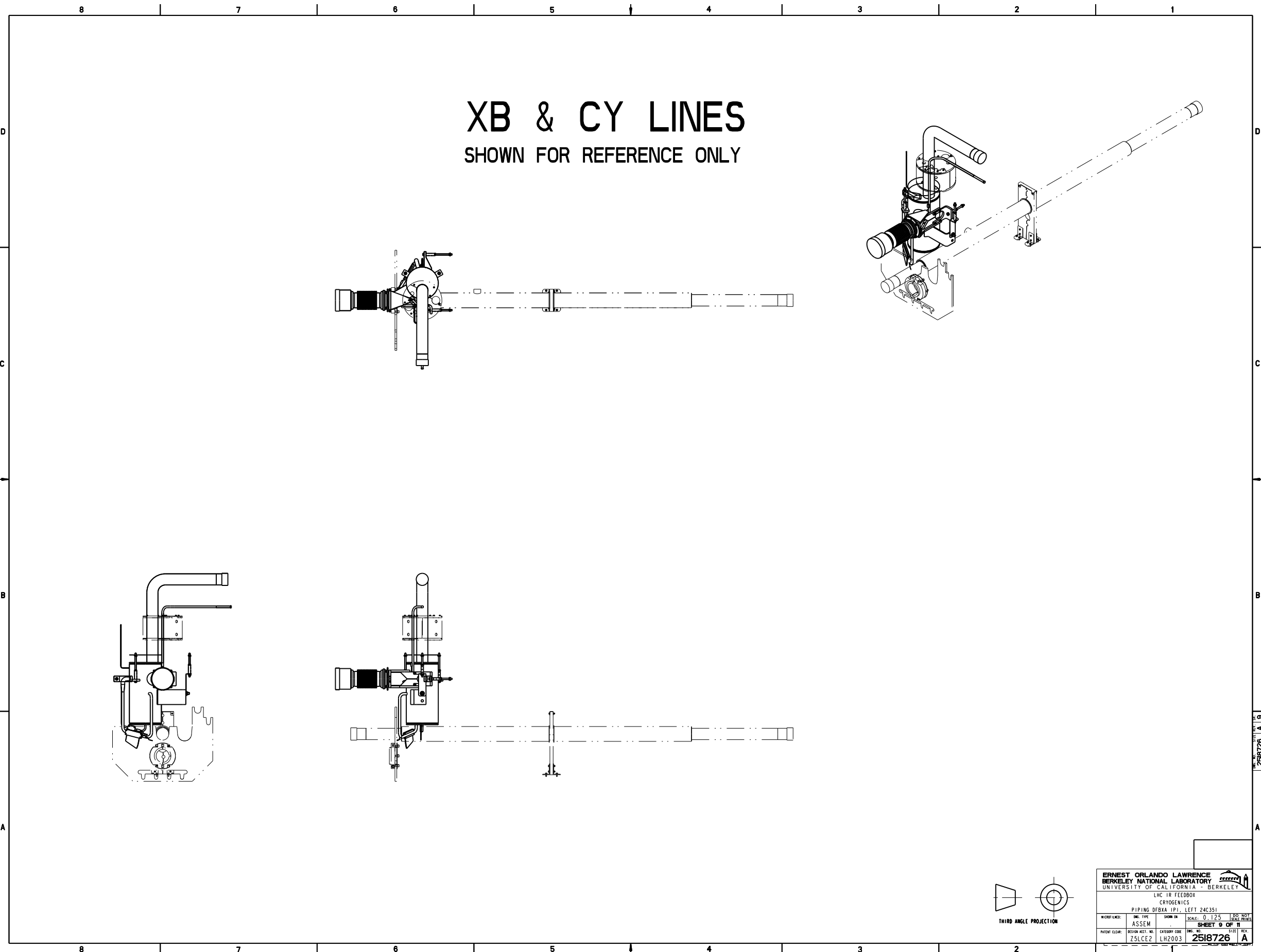


ERNEST ORLANDO LAWRENCE BERKELEY NATIONAL LABORATORY UNIVERSITY OF CALIFORNIA - BERKELEY			
LHC TR FEEDBOX CRYOGENICS			
PIPING DFBXA-IP1, LEFT 24C351			
MICROFILMED: ASSEM	DWG. TYPE: ASSEM	SHOWN IN: ASSEM	SCALE: 0.125 (1/8"=1'-0")
SHEET 8 OF 11		2518726	
PATENT CLEAR: Z5LCE2	DESIGN ACCT. NO.: LH2003	CATEGORY CODE: LH2003	DWG. NO.: 2518726

2518726 A B

XB & CY LINES

SHOWN FOR REFERENCE ONLY

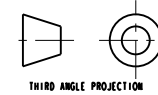
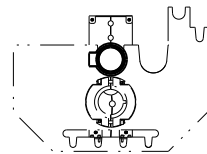
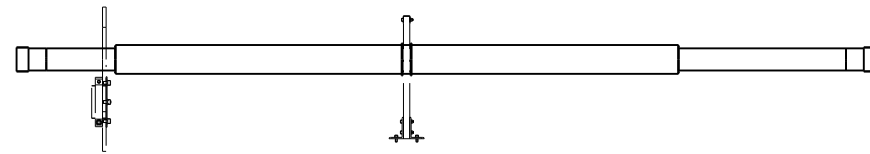
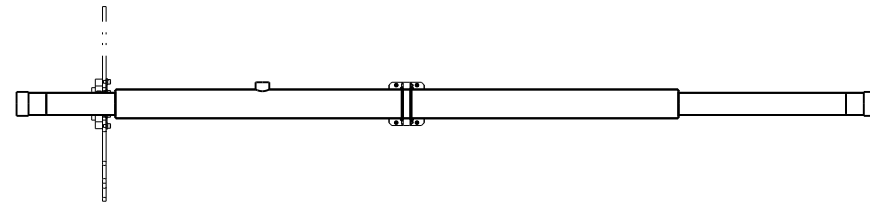
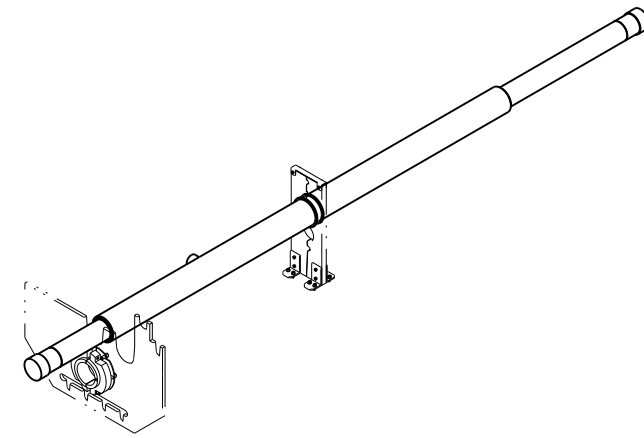


ERNEST ORLANDO LAWRENCE BERKELEY NATIONAL LABORATORY <small>UNIVERSITY OF CALIFORNIA - BERKELEY</small>			
<small>LHC TR FEEDBOX</small> <small>CRYOGENICS</small>			
<small>PIPING DFBXA-IP1, LEFT 24C351</small>			
<small>W/CRP/LINE:</small>	<small>ENG. TYPE:</small>	<small>SHOWN IN:</small>	<small>SCALE:</small>
	<small>ASSEM</small>		<small>0.125</small>
SHEET 9 OF 11			<small>1/8" = 1'-0"</small>
<small>PATENT CLEAR:</small>	<small>DESIGN ACCT. NO.:</small>	<small>CATEGORY CODE:</small>	<small>ENG. NO.:</small>
	<small>Z5LCE2</small>	<small>LH2003</small>	<small>2518726</small>
			A

2518726 A 9

BEAM TUBE

SHOWN FOR REFERENCE ONLY



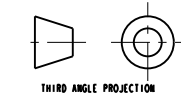
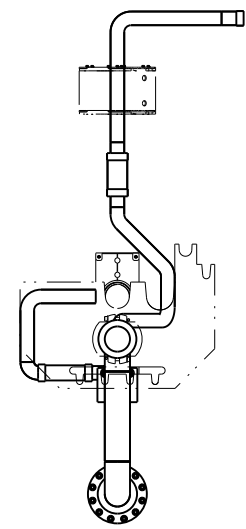
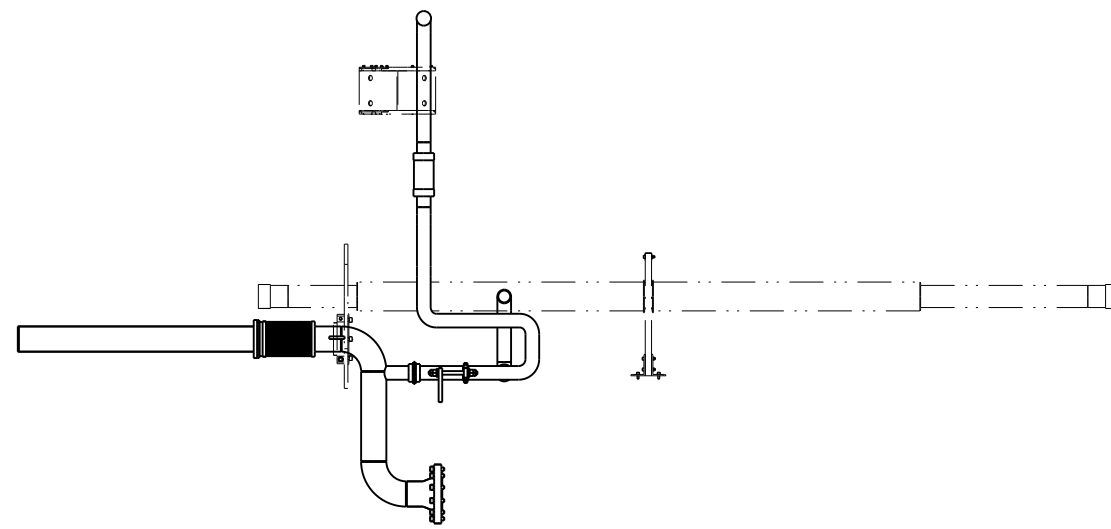
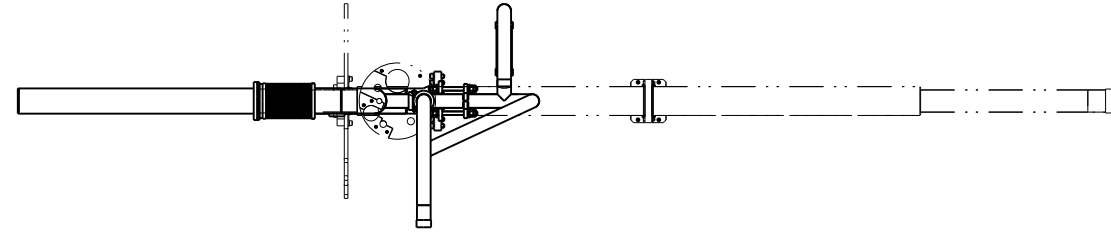
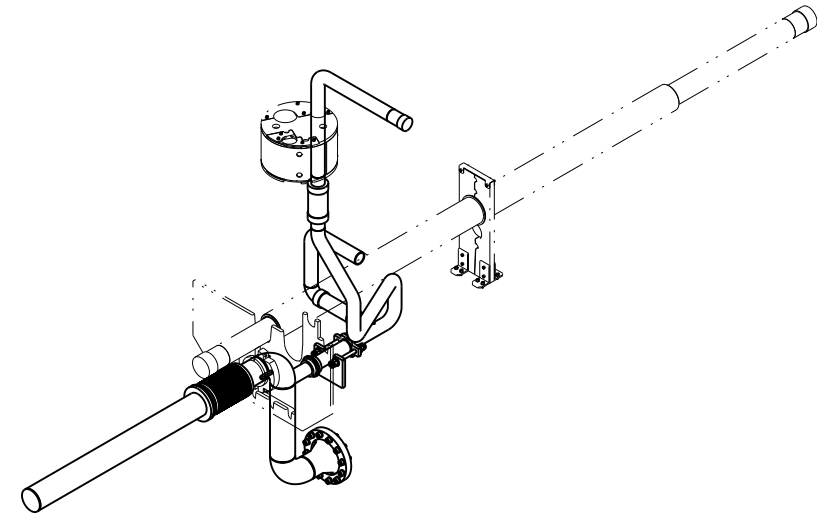
THIRD ANGLE PROJECTION

ERNEST ORLANDO LAWRENCE BERKELEY NATIONAL LABORATORY UNIVERSITY OF CALIFORNIA - BERKELEY			
LHC TR FEEDBOX CRYOGENICS			
PIPING DFBXA-IP1, LEFT 24C351			
MICROFILMED: ASSEM	DWG. TYPE: ASSEM	SHOWN IN: SCALE: 0.125 (SCALE: 1/8")	SHEET NO. OF 11 2518726 A
PATENT CLEAR: ZSLCEZ	DESIGN ACCT. NO.: LH2003	CATEGORY CODE: 2518726	DWG. NO.: REV.

2518726 A 10

BUS DUCT ASSEMBLY

SHOWN FOR REFERENCE ONLY



ERNEST ORLANDO LAWRENCE BERKELEY NATIONAL LABORATORY UNIVERSITY OF CALIFORNIA - BERKELEY			
LHC TR FEEDBOX CRYOGENICS			
PIPING DFBXA-IP1, LEFT 24C351			
MICROFILMED: ASSEM	DWG. TYPE: ASSEM	DRAWN BY: LH2003	SCALE: 0.125 SHEET 11 OF 11 2518726 A
PATENT CLEAR: ZSLCEZ	DESIGN ACCT. NO.: LH2003	CATEGORY CODE: LH2003	DWG. NO.: 2518726 SIZE: A

2518726 A 11