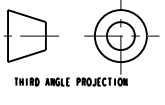


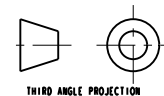
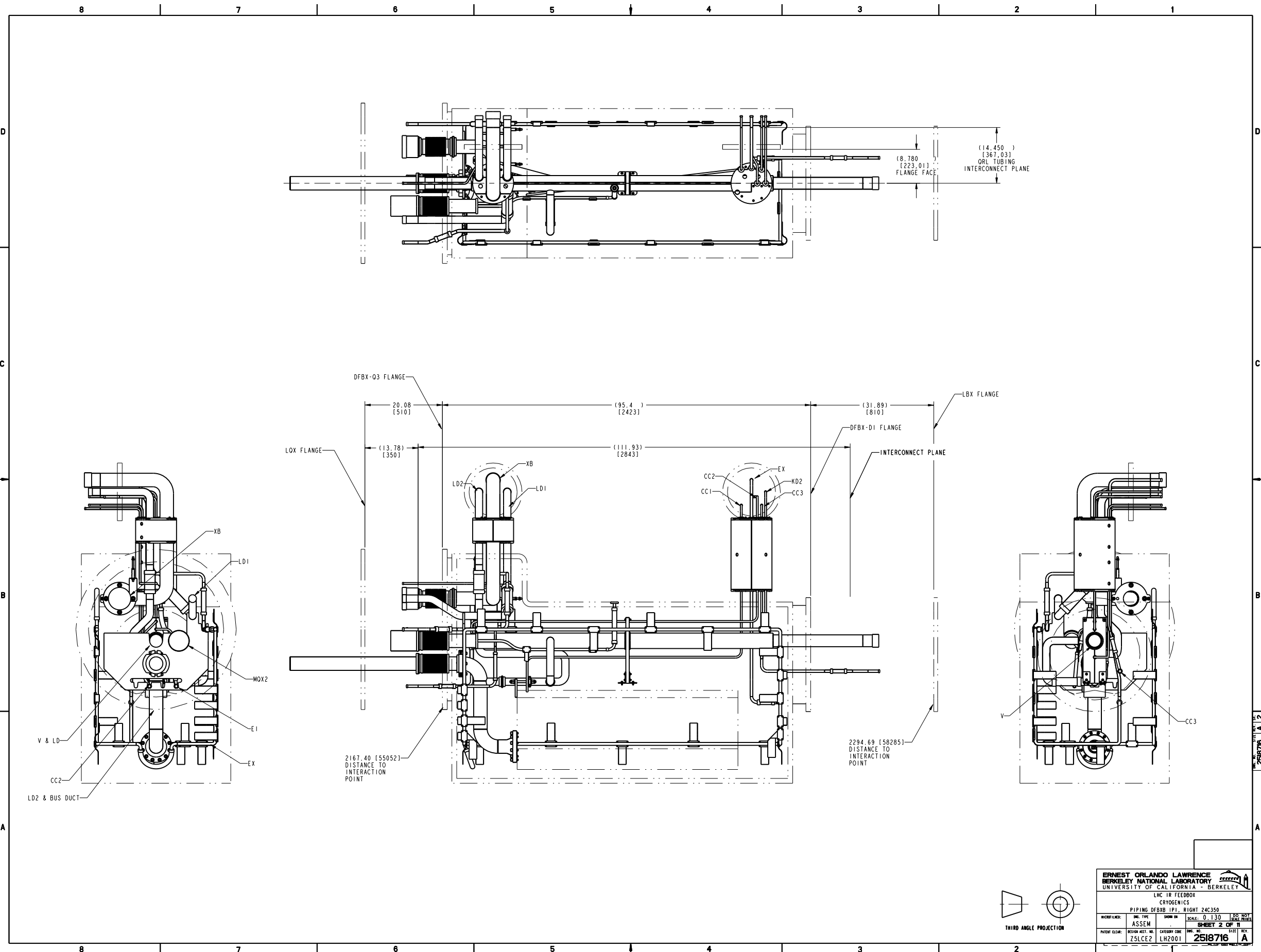
ITEM	PART NO	REQD	DESCRIPTION	MATERIAL
16	251095	1	SUPPORT, OOSA, DFBXB	NEMA G10
15	251411	1	SUPPORT, O3 SIDE, DFBXB / DFBXE	NEMA G10
14	251096	1	SUPPORT, OOSB, DFBXB	NEMA G10
13	251405	1	SUPPORT, CENTER PIPE, DFBXB	-
12	251522	1	PIPE, CC2	-
11	251521	1	PIPE, CC3	-
10	251520	1	PIPE, MO2	-
9	251510	1	PIPE, V AND ED ASSY	-
8	251439	1	PIPE, LD1	-
7	251301	1	PIPE, MOX2	-
6	251242	1	PIPE, E1	-
5	251236	1	PIPE, CC1	-
4	251537	1	PIPE, EX	-
3	251530	1	PIPE WELDMNT, XB	-
2	251303	1	PIPE, CX1	-
1	251542	1	PIPE WELDMNT, LD2 AND BUS DUCT	-

REV	DATE	BY	CHK	DESCRIPTION
A	11/25/82	DPO		INITIAL RELEASE
				CHANGES

ITEM	PART NO	REQD	DESCRIPTION	MATERIAL
16	251095	1	SUPPORT, OOSA, DFBXB	NEMA G10
15	251411	1	SUPPORT, O3 SIDE, DFBXB / DFBXE	NEMA G10
14	251096	1	SUPPORT, OOSB, DFBXB	NEMA G10
13	251405	1	SUPPORT, CENTER PIPE, DFBXB	-
12	251522	1	PIPE, CC2	-
11	251521	1	PIPE, CC3	-
10	251520	1	PIPE, MO2	-
9	251510	1	PIPE, V AND ED ASSY	-
8	251439	1	PIPE, LD1	-
7	251301	1	PIPE, MOX2	-
6	251242	1	PIPE, E1	-
5	251236	1	PIPE, CC1	-
4	251537	1	PIPE, EX	-
3	251530	1	PIPE WELDMNT, XB	-
2	251303	1	PIPE, CX1	-
1	251542	1	PIPE WELDMNT, LD2 AND BUS DUCT	-

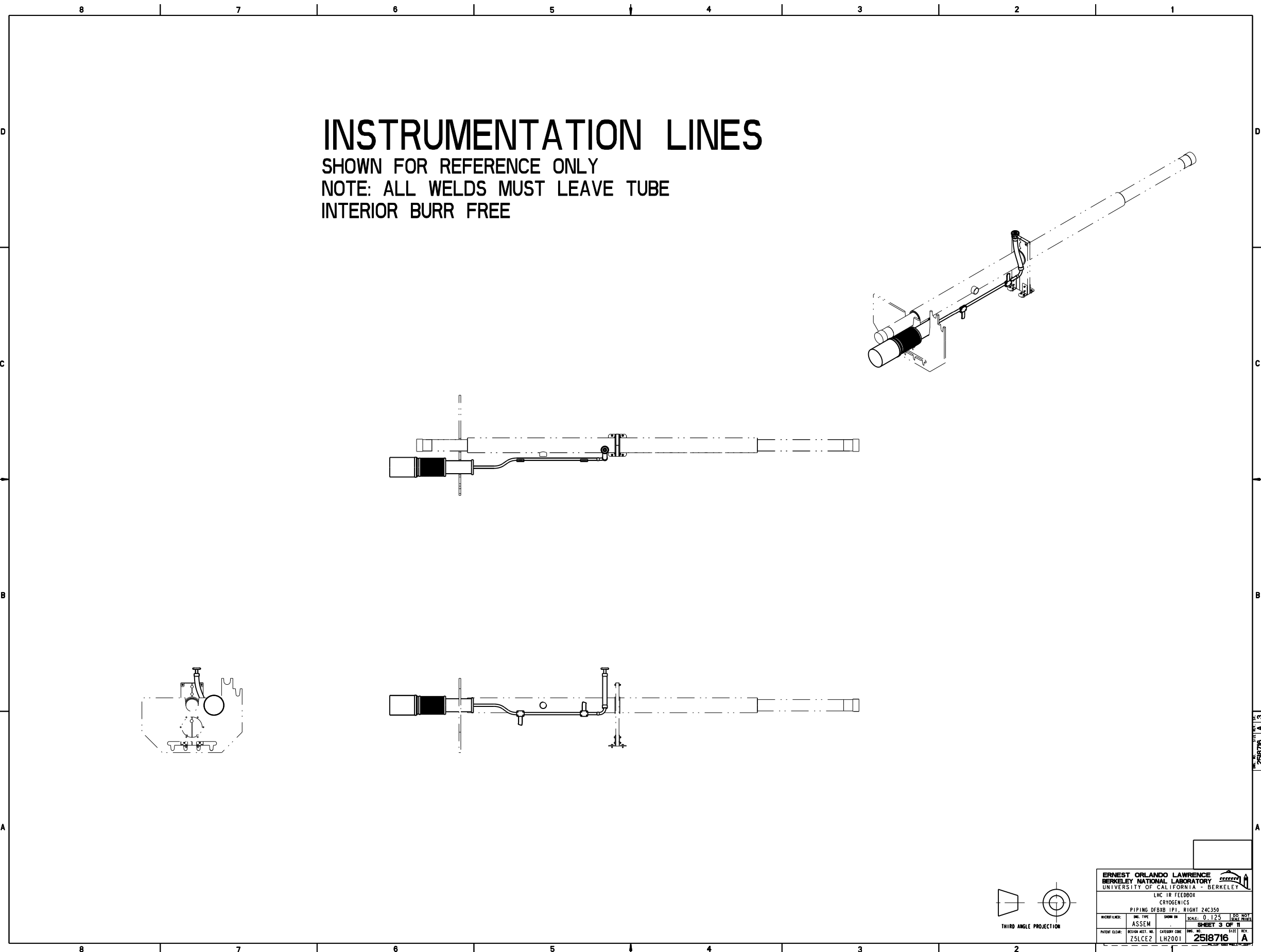


2518716 A 1  
 ERNEST ORLANDO LAWRENCE  
 BERKELEY NATIONAL LABORATORY  
 UNIVERSITY OF CALIFORNIA - BERKELEY  
 LHC TR FEEDBOX  
 CRYOGENICS  
 PIPING DFBXB IPI, RIGHT 24C350  
 SCALE: 0.125  
 SHEET 1 OF 11  
 2518716 A



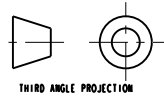
ERNEST ORLANDO LAWRENCE BERKELEY NATIONAL LABORATORY UNIVERSITY OF CALIFORNIA - BERKELEY			
LHC TR FEEDBOX CRYOGENICS			
PIPING DFBX (PI) RIGHT 24C350			
MICROFILMED:	DRG. TYPE: ASSEM	DRAWN BY: LH2001	SCALE: 0.130 SHEET 2 OF 11 2518716 A
PATENT FILED:	DESIGN ACCT. NO.: ZSLCE2	CATEGORY CODE: LH2001	DRG. NO.: 2518716 A

2518716 A 12



# INSTRUMENTATION LINES

SHOWN FOR REFERENCE ONLY  
 NOTE: ALL WELDS MUST LEAVE TUBE  
 INTERIOR BURR FREE

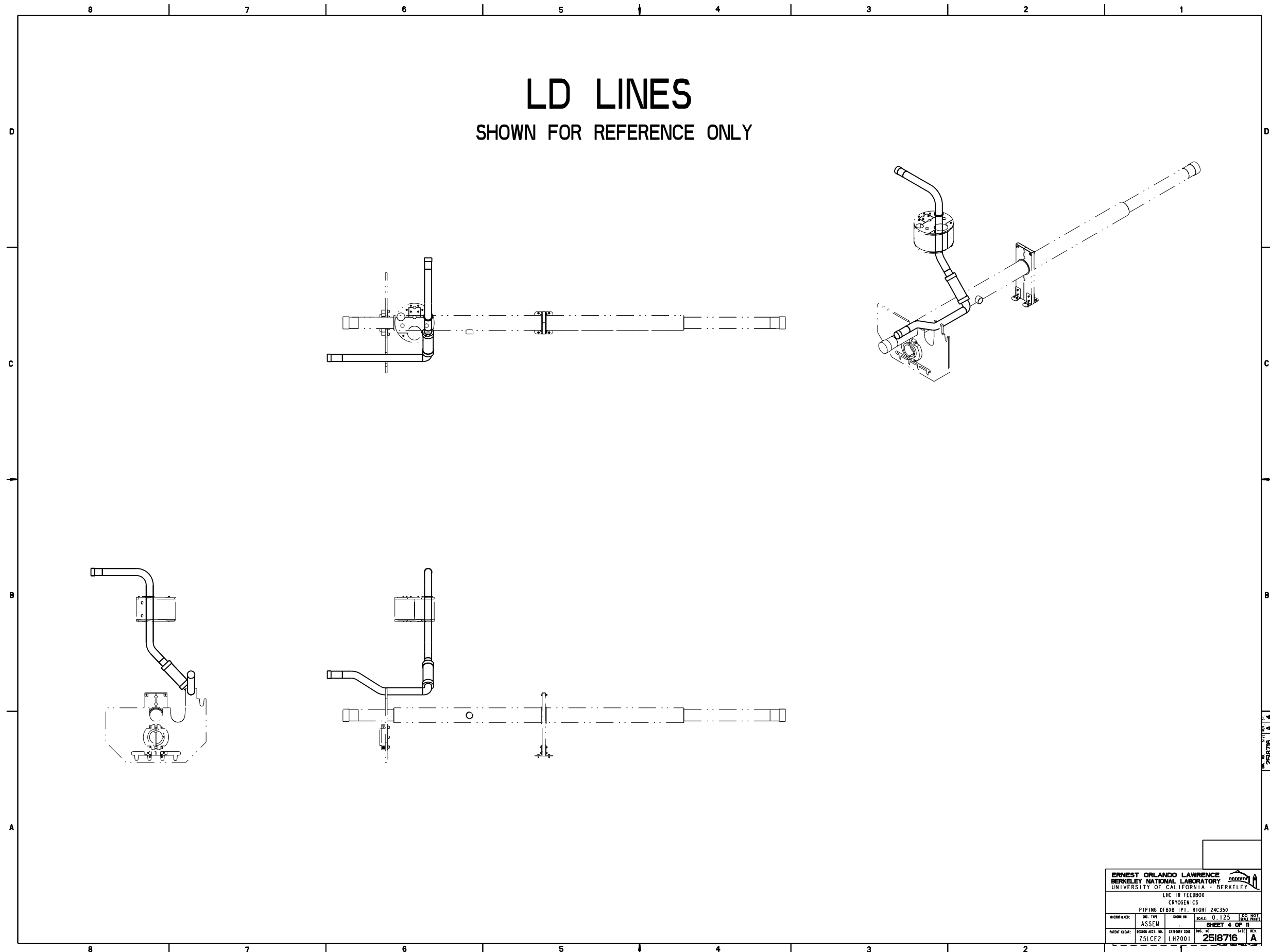


ERNEST ORLANDO LAWRENCE BERKELEY NATIONAL LABORATORY UNIVERSITY OF CALIFORNIA - BERKELEY			
LHC IR FEEDBOX CRYOGENICS			
PIPING DFBX IPI RIGHT 24C350			
INSTRUMENT LINE:	ASSEM	SCALE: 0.125	DATE: 10/20/01
SHEET 3 OF 11		REV.:	
PATENT CLEM:	25LCE2	CATEGORY CODE:	LH2001
2518716		A	

2518716 A 13

# LD LINES

SHOWN FOR REFERENCE ONLY

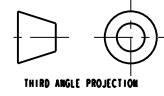
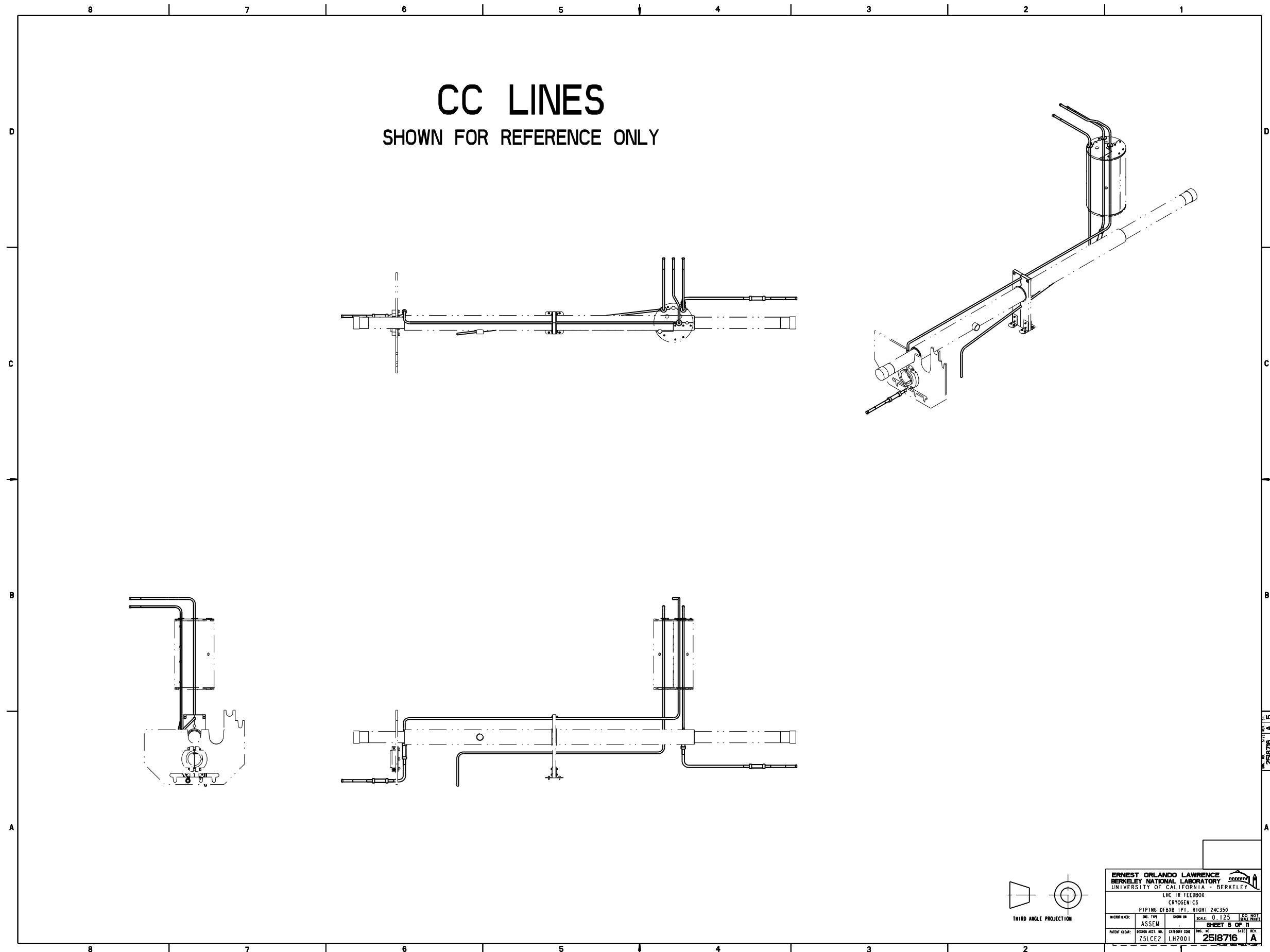


ERNEST ORLANDO LAWRENCE				UNIVERSITY OF CALIFORNIA - BERKELEY	
BERKELEY NATIONAL LABORATORY				UNIVERSITY OF CALIFORNIA - BERKELEY	
CRYOGENICS				LHC TR FEEDBOX	
PIPING DFBX IPI RIGHT 24C350				SCALE: 0.125	
INSTRUMENT:	DOC. TYPE:	SHOWN IN:	SCALE:	DATE:	REV.:
ASSEM					
PATENT CLERK: ZSLCEZ				DESIGN NO.: LH2001	REV.:
				2518716	A

2518716 A 4

# CC LINES

SHOWN FOR REFERENCE ONLY

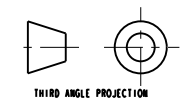
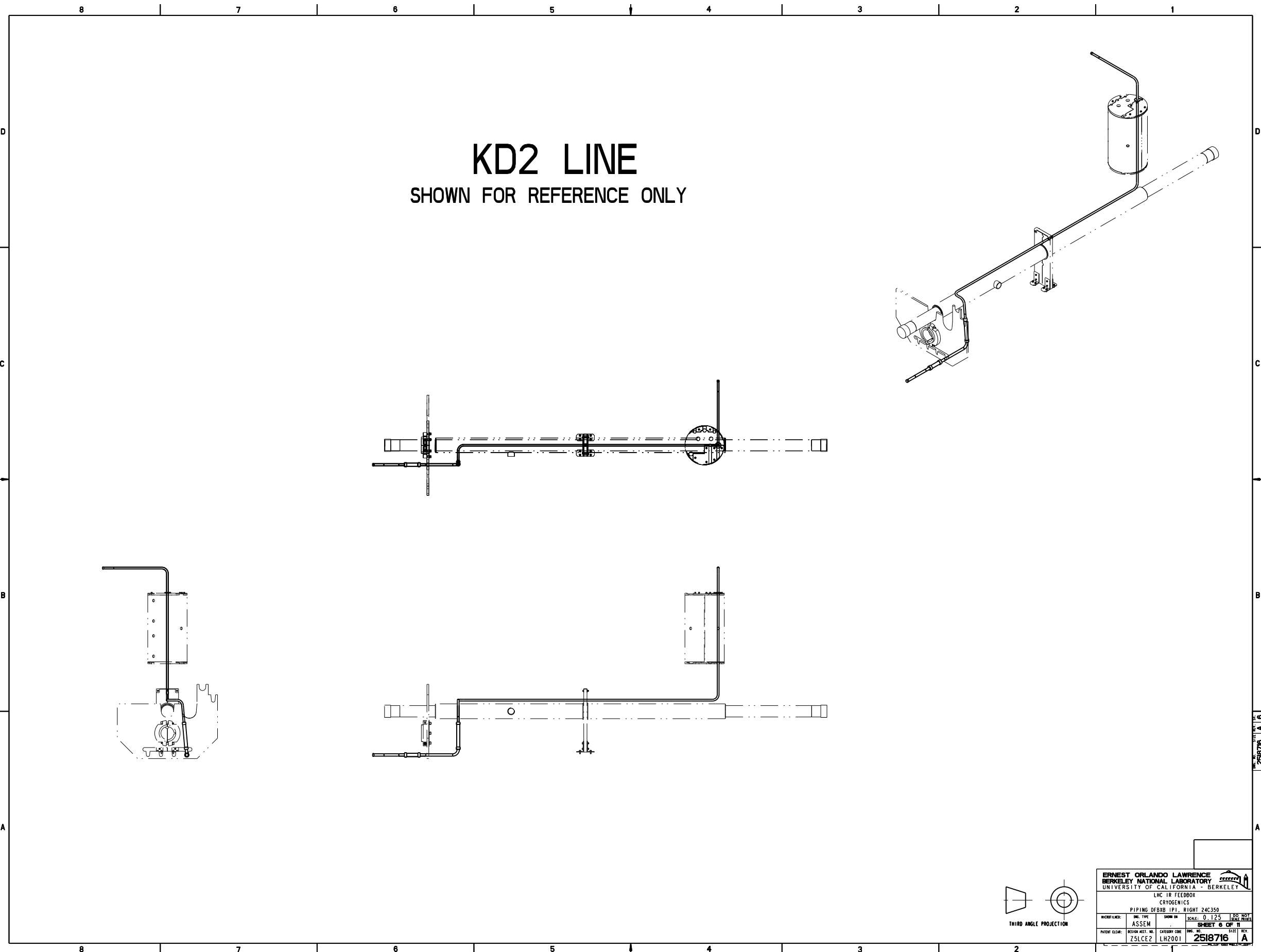


<b>ERNEST ORLANDO LAWRENCE</b> <b>BERKELEY NATIONAL LABORATORY</b> UNIVERSITY OF CALIFORNIA - BERKELEY			
LHC TR FEEDBOX CRYOGENICS			
PIPING DFBX IPI RIGHT 24C350			
MICROFILMED: ASSEM	DRAWN BY: LH2001	SCALE: 0.125	SHEET 6 OF 11 2518716 A
PATENT CLERK: ZSLCEZ	DESIGN ACCT. NO.: LH2001	CATEGORY CODE: LH2001	SHEET 6 OF 11 2518716 A

2518716 A 15

# KD2 LINE

SHOWN FOR REFERENCE ONLY

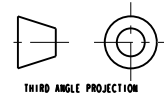
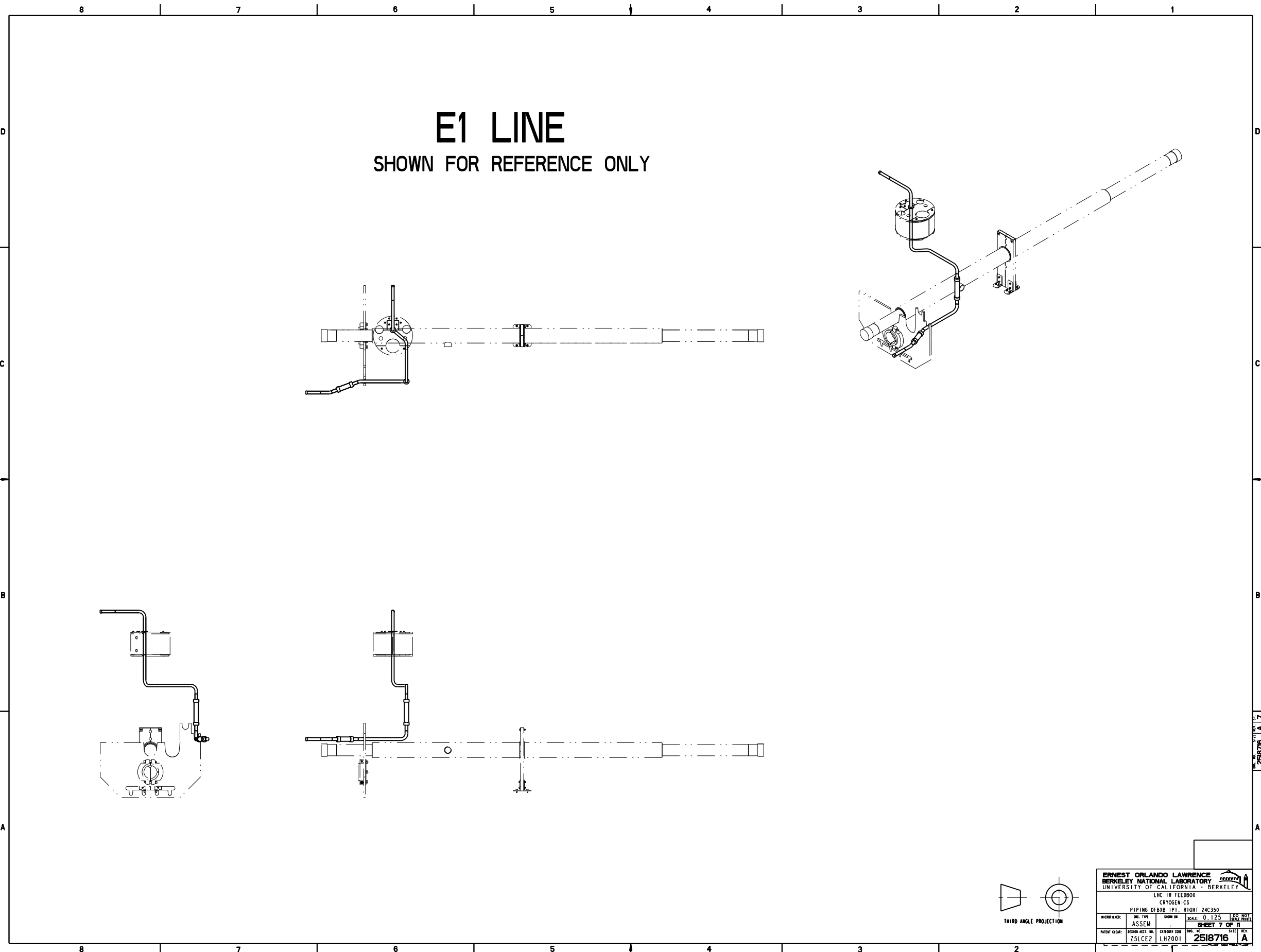


<b>ERNEST ORLANDO LAWRENCE</b> <b>BERKELEY NATIONAL LABORATORY</b> UNIVERSITY OF CALIFORNIA - BERKELEY			
LHC TR FEEDBOX CRYOGENICS			
PIPING DFRXB IPI RIGHT 24C350		SCALE: 0.125	
<small>INSTRUMENTS:</small> DRG. TYPE ASSEM	<small>SHOWN IN:</small> ASSEM	<small>DATE:</small> 1995	<small>BY:</small> [Signature]
<small>PATENT FILED:</small> ZSLCE2		<small>REV. NO.:</small> LH2001	
<small>REV. NO.:</small> 2518716		<small>REV.:</small> A	

2518716 A 6

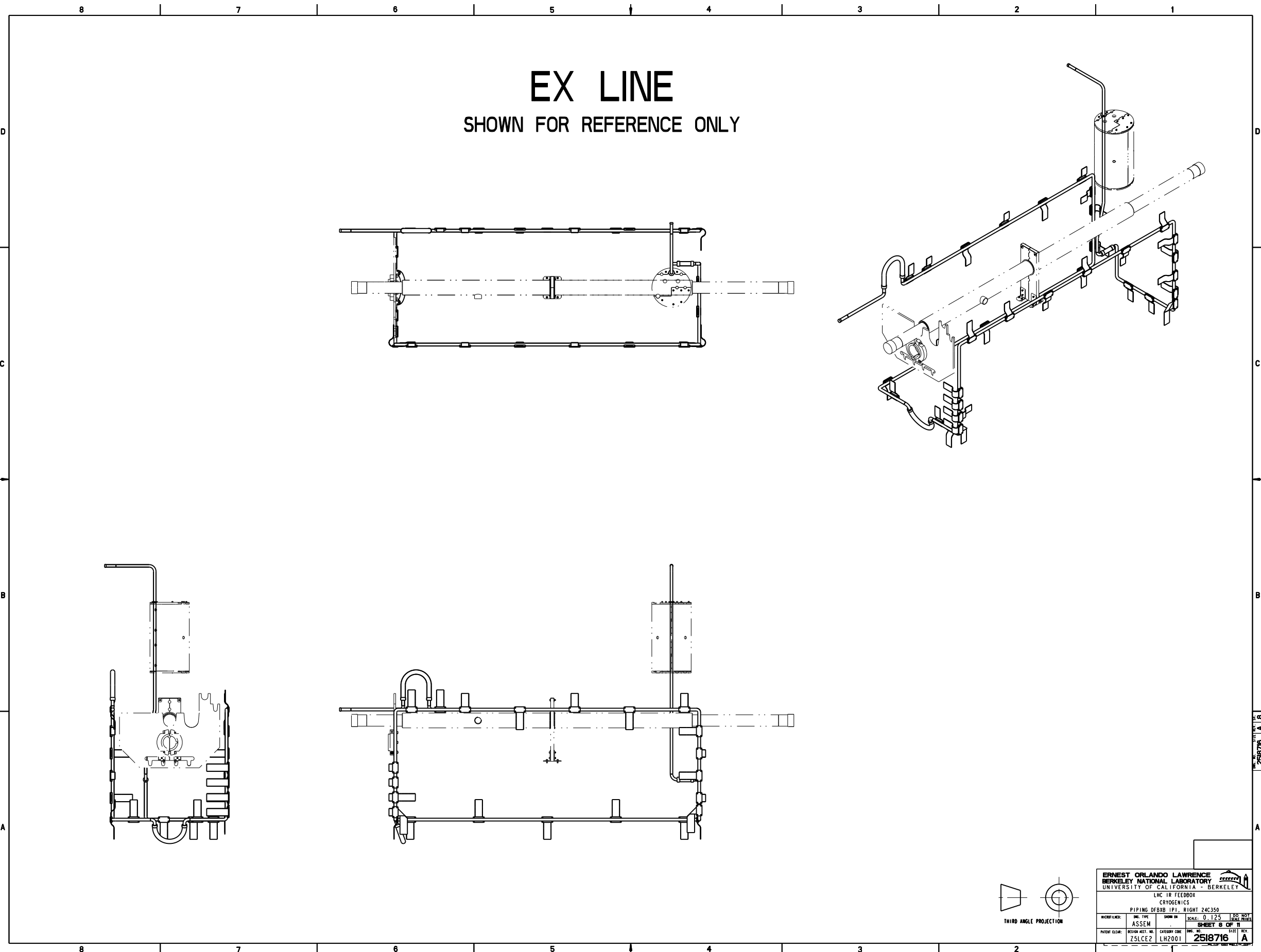
# E1 LINE

SHOWN FOR REFERENCE ONLY



<b>ERNEST ORLANDO LAWRENCE</b> <b>BERKELEY NATIONAL LABORATORY</b> UNIVERSITY OF CALIFORNIA - BERKELEY			
LHC TR FEEDBOX CRYOGENICS			
PIPING DFBX-1PI, RIGHT 24C350			
<small>INSTRUMENTS:</small> ASSEM	<small>SCALE:</small> 0.125	<small>DATE:</small> 1997	<small>REV:</small> 1
<small>PATENT CLERK:</small> ZSLCEZ	<small>DESIGN NO.:</small> LH2001	<small>PROJECT NO.:</small> 2518716	<small>SHEET NO.:</small> 7 OF 11

2518716 A.17



**EX LINE**  
SHOWN FOR REFERENCE ONLY

8 7 6 5 4 3 2 1

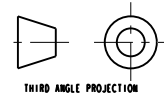
D

C

B

A

8 7 6 5 4 3 2 1



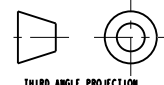
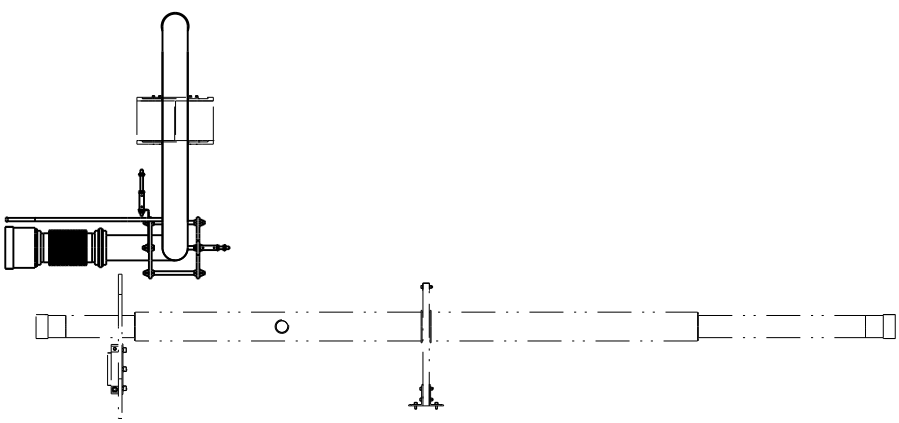
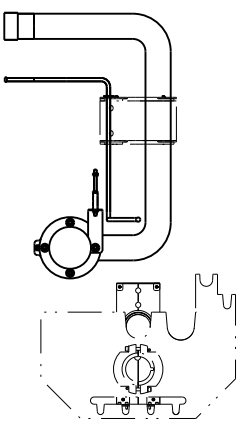
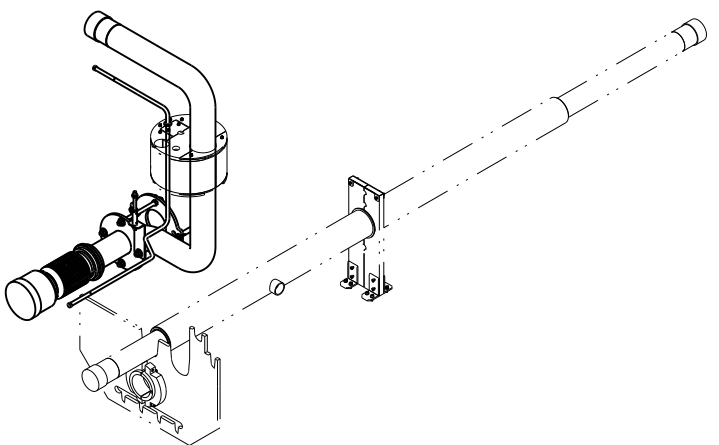
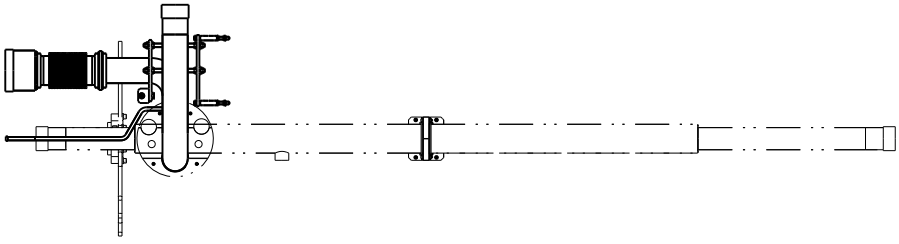
<b>ERNEST ORLANDO LAWRENCE</b> <b>BERKELEY NATIONAL LABORATORY</b> UNIVERSITY OF CALIFORNIA - BERKELEY			
LHC TR FEEDBOX CRYOGENICS			
PIPING DFBX IPI RIGHT 24C350			
MICROFILMED: ASSEM	DATE: 25LCE2	DRAWN BY: LH2001	SCALE: 0.125 <b>SHEET 8 OF 11</b> 2518716 A

2518716 A B



# XB & CY LINES

SHOWN FOR REFERENCE ONLY

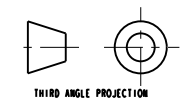
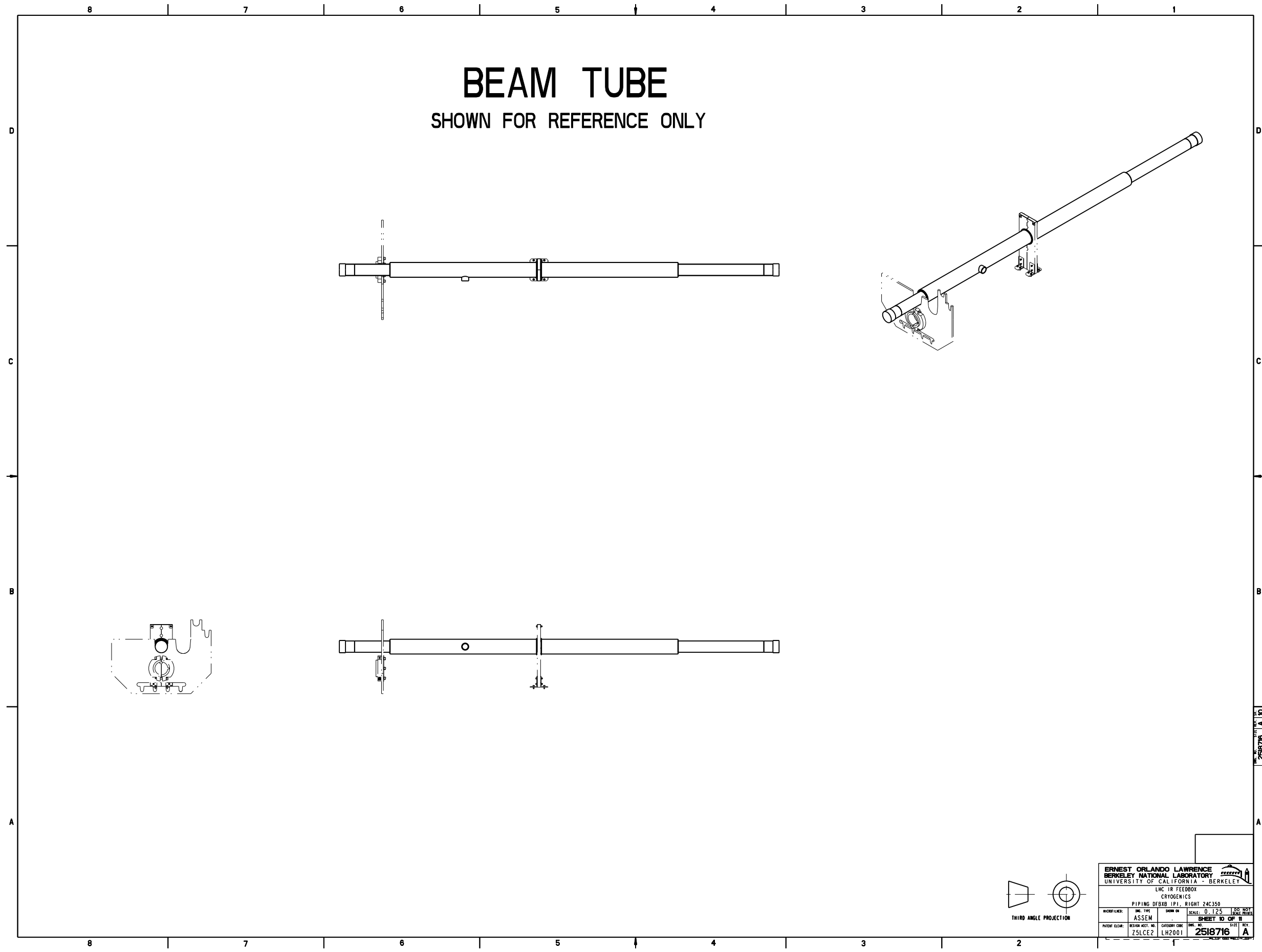


ERNEST ORLANDO LAWRENCE BERKELEY NATIONAL LABORATORY UNIVERSITY OF CALIFORNIA - BERKELEY			
LHC TR FEEDBOX CRYOGENICS			
PIPING DFBX IPI RIGHT 24C350			
INSTRUMENTS:	DOC. TYPE:	SCALE:	DATE:
ASSEM	ASSEM	0.125	10/25/01
SHEET 9 OF 11			REV.
PATENT CLERK:	DESIGN ACCT. NO.:	CATEGORY CODE:	DOC. NO.:
ZSLCEZ	LH2001	2518716	A

2518716 A 10

# BEAM TUBE

SHOWN FOR REFERENCE ONLY



<b>ERNEST ORLANDO LAWRENCE</b> BERKELEY NATIONAL LABORATORY UNIVERSITY OF CALIFORNIA - BERKELEY			
LHC TR FEEDBOX CRYOGENICS			
PIPING DFRXB IPI RIGHT 24C350		SCALE: 0.125	
INSTRUMENTS:	DESIGN NO:	DATE:	REV:
ASSEM			
PATENT CLERK: ZSLCEZ		CATEGORY CODE: LH2001	SHEET NO OF 10 <b>2518716</b> <b>A</b>

2518716 A 10

# BUS DUCT ASSEMBLY

SHOWN FOR REFERENCE ONLY

