

8

7

6

5

4

3

2

1

D

C

B

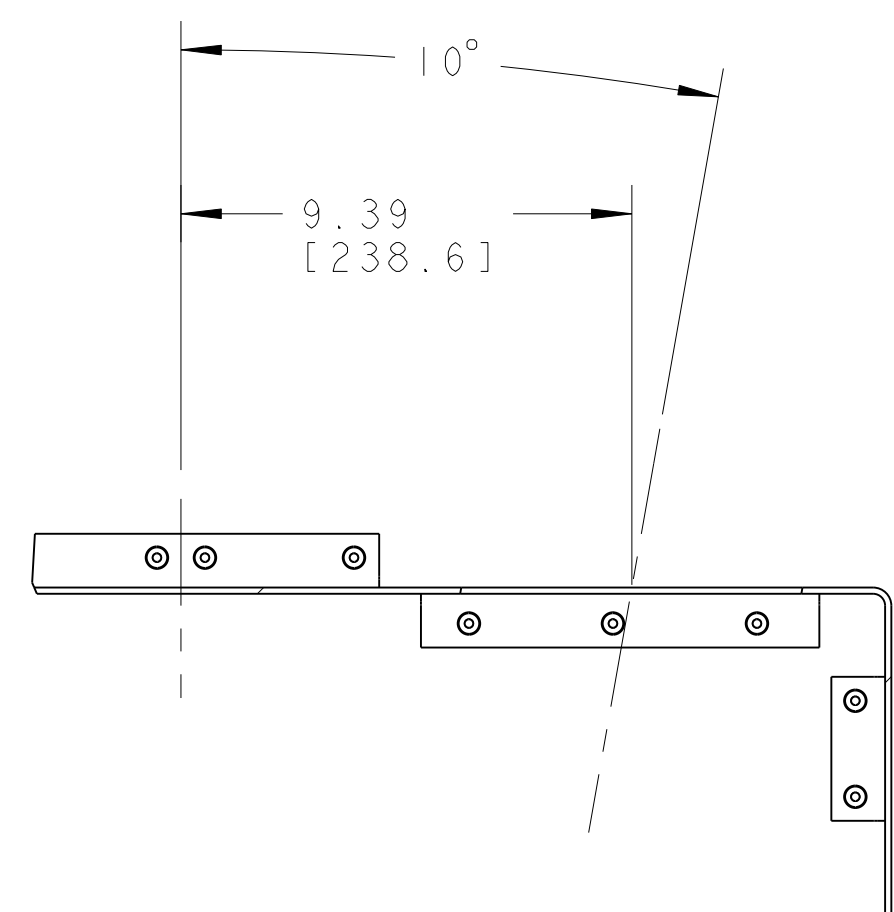
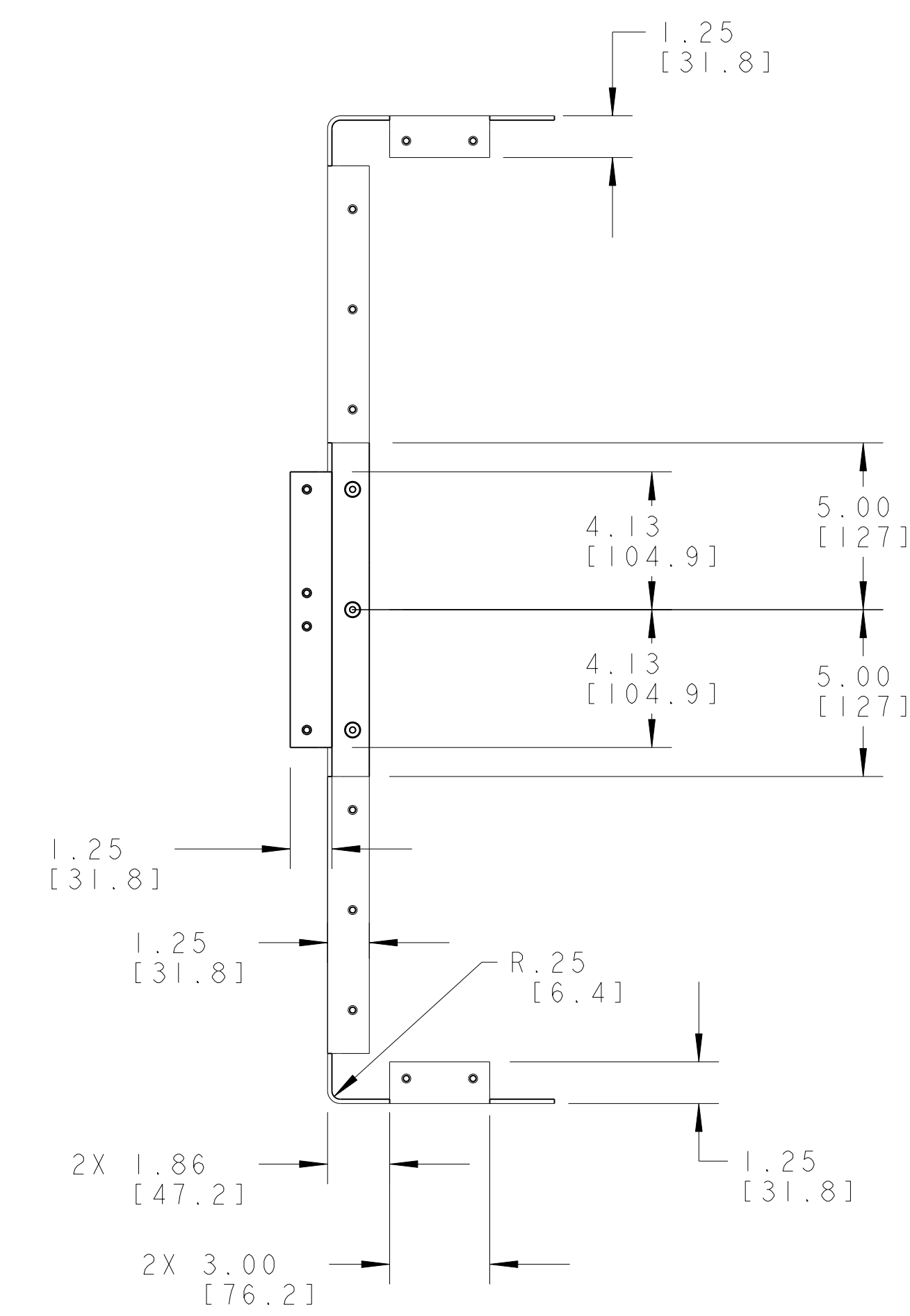
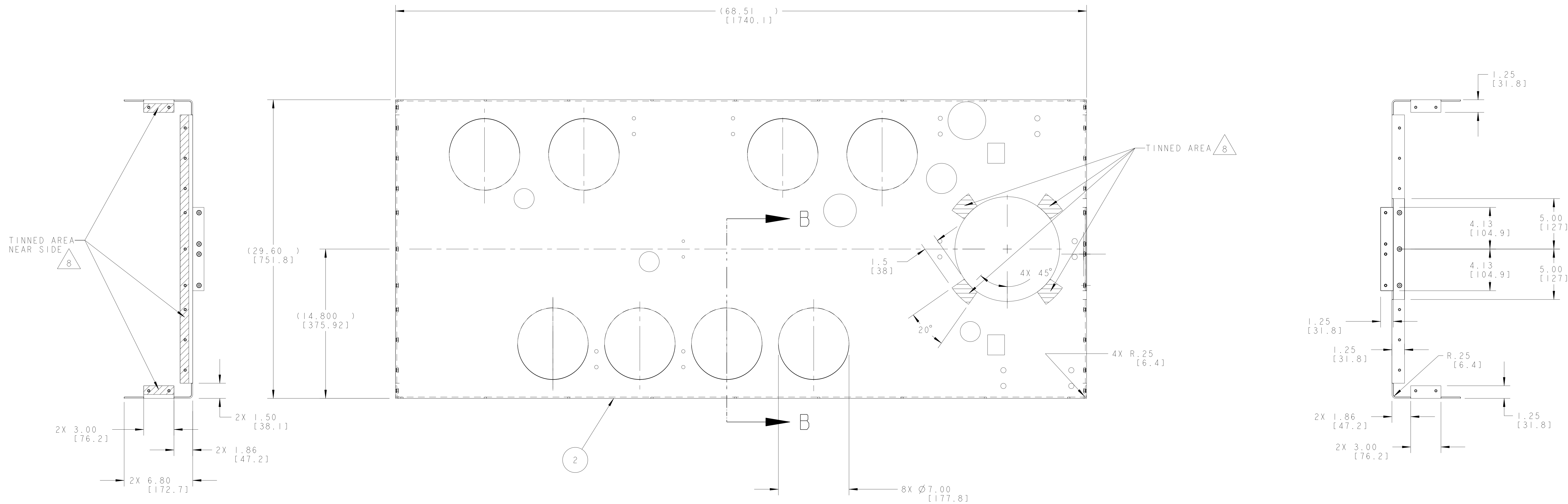
A

D

C

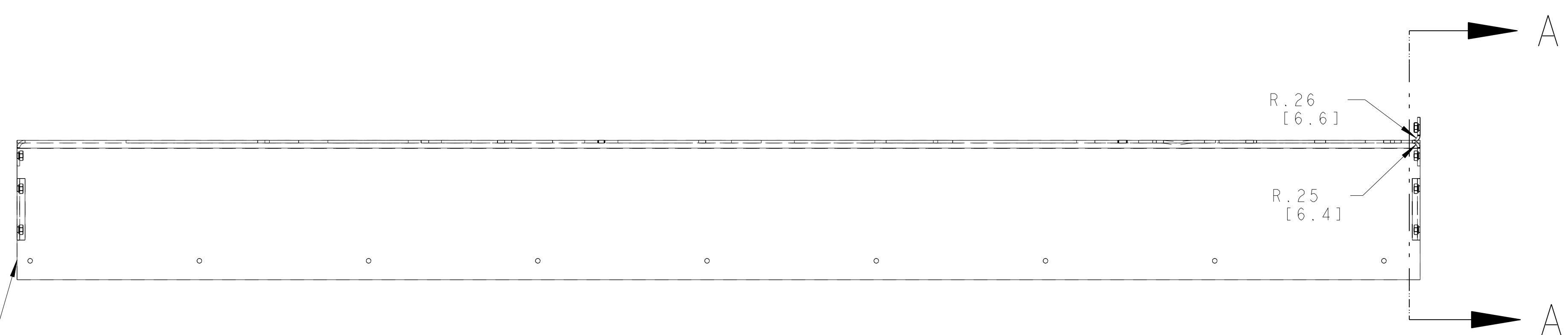
B

A

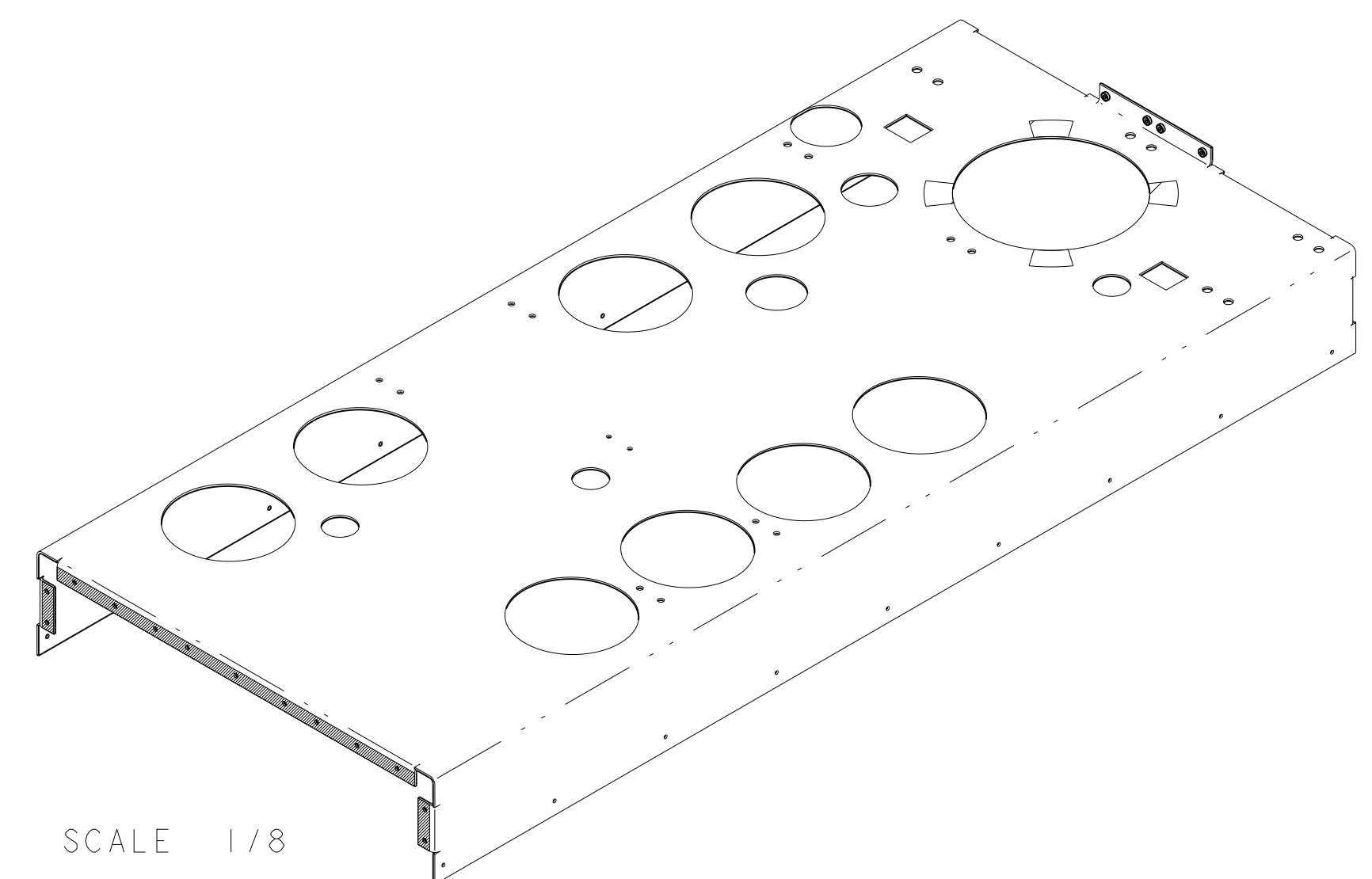
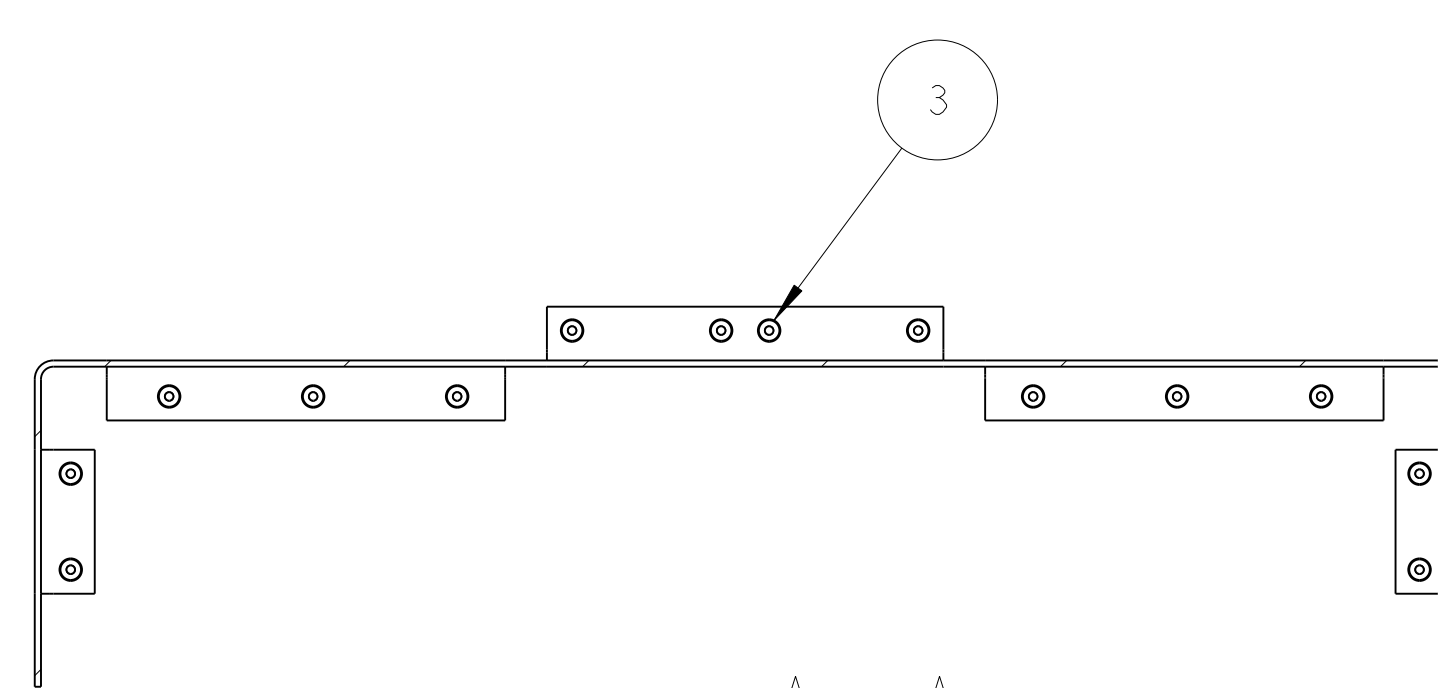


SECTION B-B
8 PLACES

(.13 [3.3] THICK)

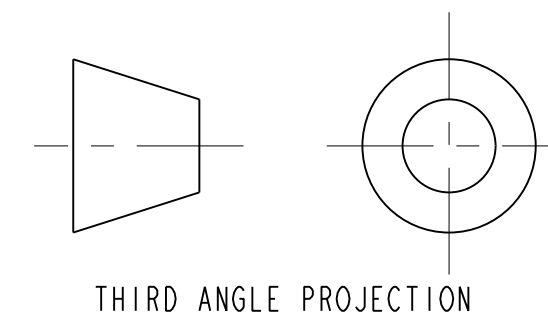


SECTION A-A



NOTES: (UNLESS OTHERWISE SPECIFIED)

1. THIS IS A CRYOGENIC VACUUM COMPONENT.
2. WELDING PROCEDURE: PER VENDOR SPECIFICATION WITH LBNL APPROVAL.
3. CLEANING PROCEDURE: PER VENDOR SPECIFICATION WITH LBNL APPROVAL.
4. PACKAGING AND STORAGE PROCEDURE OF THE COMPONENTS: PER VENDOR SPECIFICATION WITH LBNL APPROVAL.
5. DIMENSIONS AND TOLERANCING PER ANSI Y14.5M-1982. UNITS ARE IN INCHES [mm] UNLESS OTHERWISE SPECIFIED.
6. USE OF SULFUR OR SILICONE BEARING OILS, LUBRICANTS, OR COOLANTS ARE STRICTLY PROHIBITED.
7. USE OF RESIN OR RUBBER BONDED ABRASIVES UNDER POWER IS STRICTLY PROHIBITED. USE VITREOUS BONDED ABRASIVES ONLY.
8. TIN NOTED AREAS WITH 60/40 Sn/Pb SOLDER, USE RESIN FLUX.

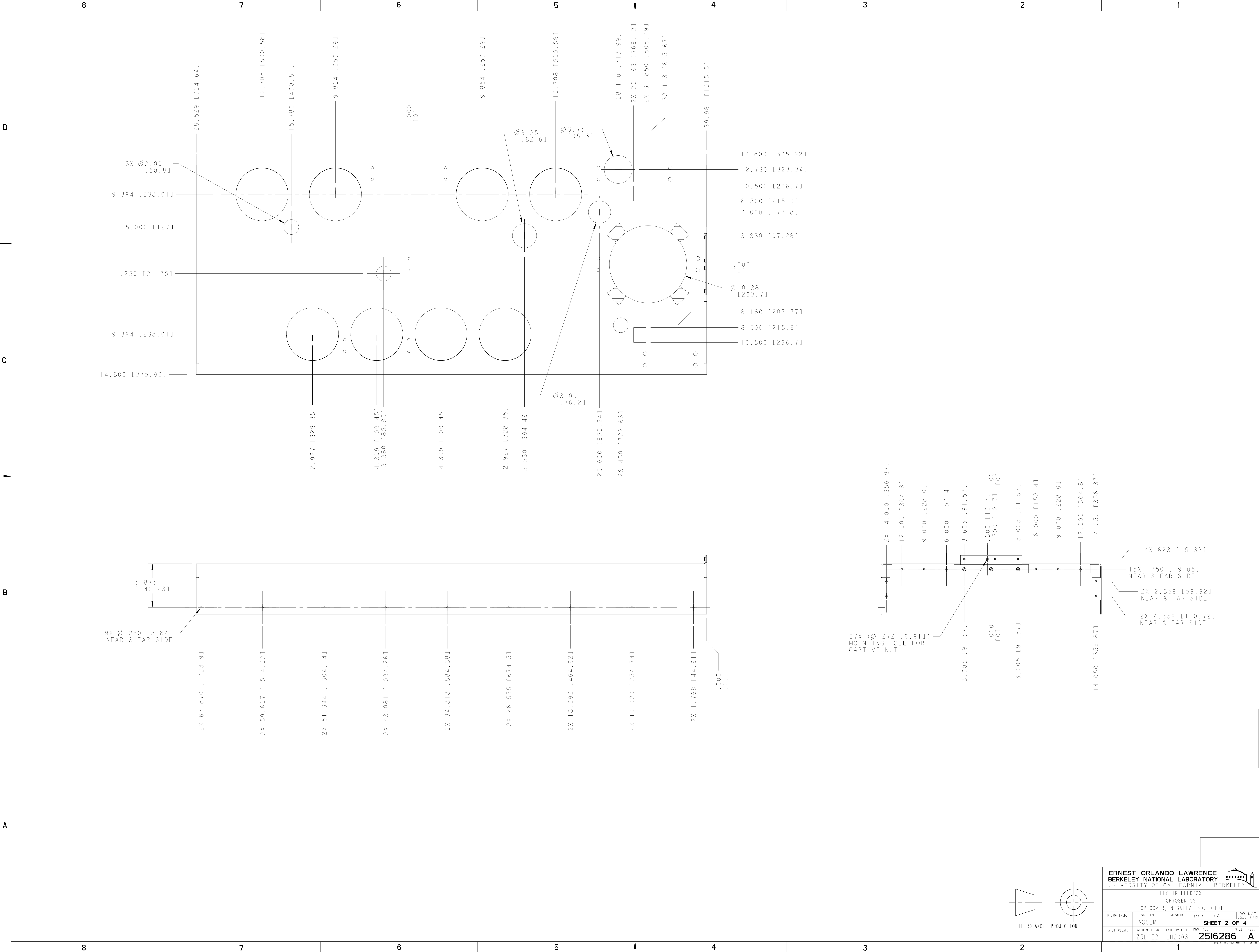


THIRD ANGLE PROJECTION

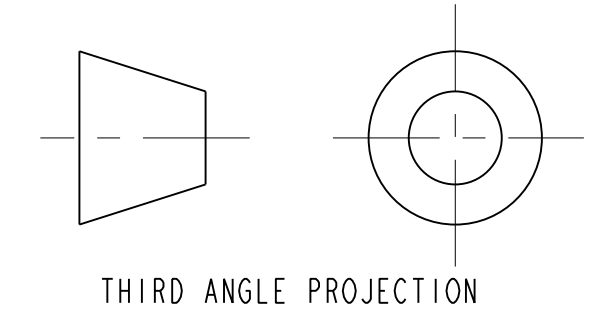
3	-	27	MS CAPTIVE NUT, PEM-AC-MS-1-SF	SS
2	-	1	SHEET, .125 THICK	COPPER, OFHC, C101
ITEM	PART NO	REQD	DESCRIPTION	MATERIAL
SHOP ORDERS UNLESS OTHERWISE SPECIFIED X.X ± 0.1 FRACTION ± 1/64 X.XX ± 0.03 ANGLES ± 1.0° X.XXX ± 0.010 FINISH DO NOT SCALE PRINT DIMENSIONS ARE CLASS 2 CHAMFER ENDS OF ALL SCREW THREADS 30° CUT ROUNDS, 1.5 THREAD RELIEF ON MACHINED THREADS BREAK EDGES .010 MAX. ON MACHINED WORK REMOVE BURRS, WELD SPATTER & LOOSE SCALE IN ACCORDANCE WITH SEMI E14.3M & B&E.1				
ERNEST ORLANDO LAWRENCE BERKELEY NATIONAL LABORATORY UNIVERSITY OF CALIFORNIA BERKELEY			LHC IR FEEDBOX CRYOGENICS TOP COVER, NEGATIVE SD, DFBXB DWG. TYPE: ASSEM SCALE: 1/4 SHEET 1 OF 4	
REV: A ARH: SPY DATE: 8/19/02 INITIAL RELEASE CHANGES		PATENT CLEAR: Z5LCE2 REVISION NO.: LH2003 CATEGORY CODE: 2516286 DWG. NO.: 2516286 SIZE: A		

2516286 A 1

NAME: ARH:SPY OBJECT: 2516286_1 DATE: 22-Nov-02 14:01:31

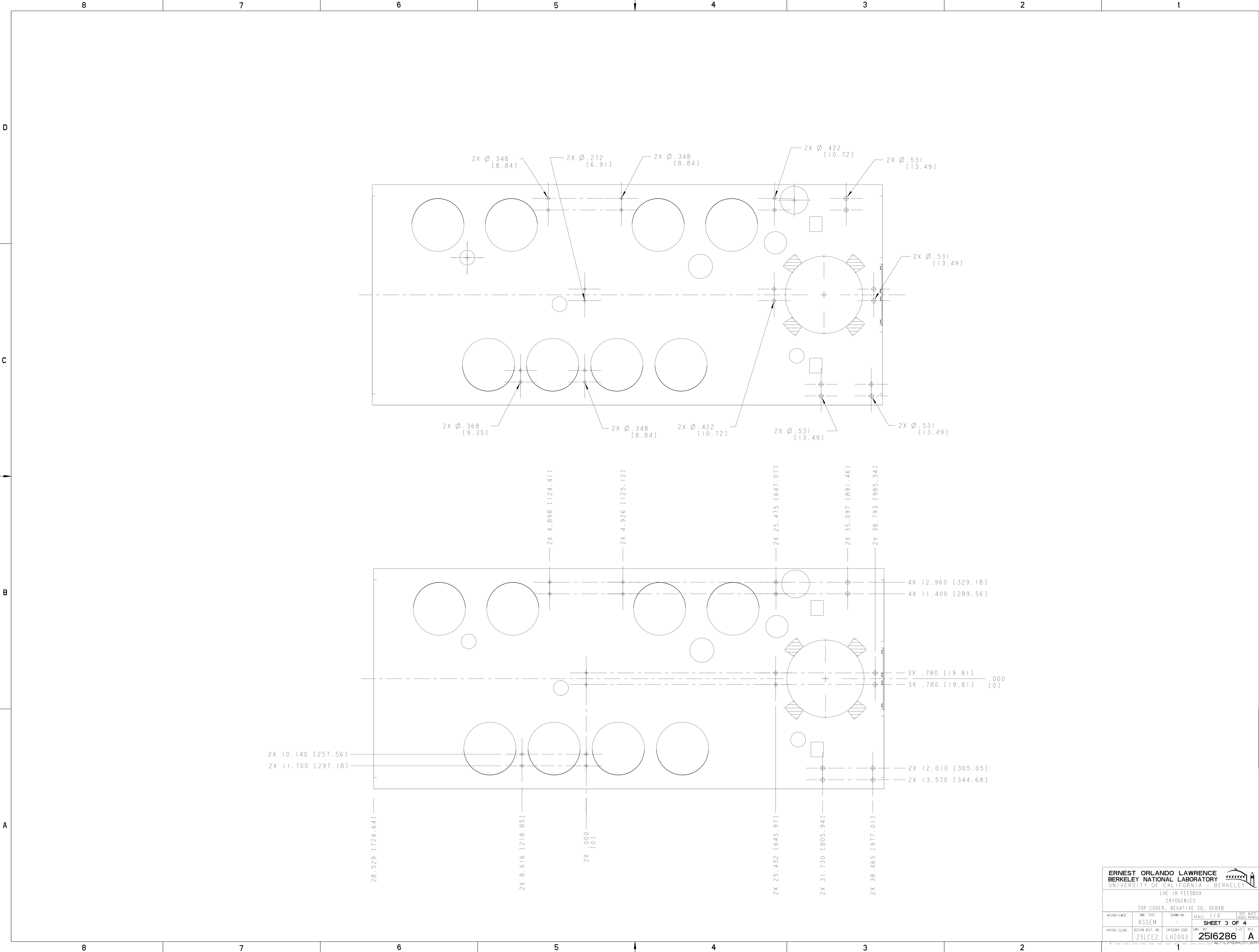


ERNEST ORLANDO LAWRENCE BERKELEY NATIONAL LABORATORY <small>UNIVERSITY OF CALIFORNIA BERKELEY</small>			
LHC IR FEEDBOX CRYOGENICS TOP COVER, NEGATIVE SD., DFBXB			
MICROFILMED:	DWG. TYPE:	SHOW ON:	SCALE:
	ASSEM		1/4
PATENT CLEAR:		REVISION NO.:	CATEGORY CODE:
		Z5LCE2	LH2003
		DWG. NO.:	REV.:
		2516286	A



2516286 A 2

NAME: ARHARRIS OBJECT: 2516286_3 DATE: 22-Nov-02 14:01:34



ERNEST ORLANDO LAWRENCE BERKELEY NATIONAL LABORATORY <small>UNIVERSITY OF CALIFORNIA BERKELEY</small>			
LHC IR FEEDBOX CRYOGENICS			
TOP COVER, NEGATIVE SD, DFBXB			
MICROFILMED:	DWG. TYPE:	SHOW ON:	SCALE:
	ASSEM		1/4
PATENT CLEAR:		REVISION ACCT. NO:	CATEGORY CODE:
	Z5LCE2	LH2003	2516286
		DWG. NO.:	SIZE:
			A
		REV.:	

2516286 A 3

8

7

6

5

4

3

2

1

D

C

B

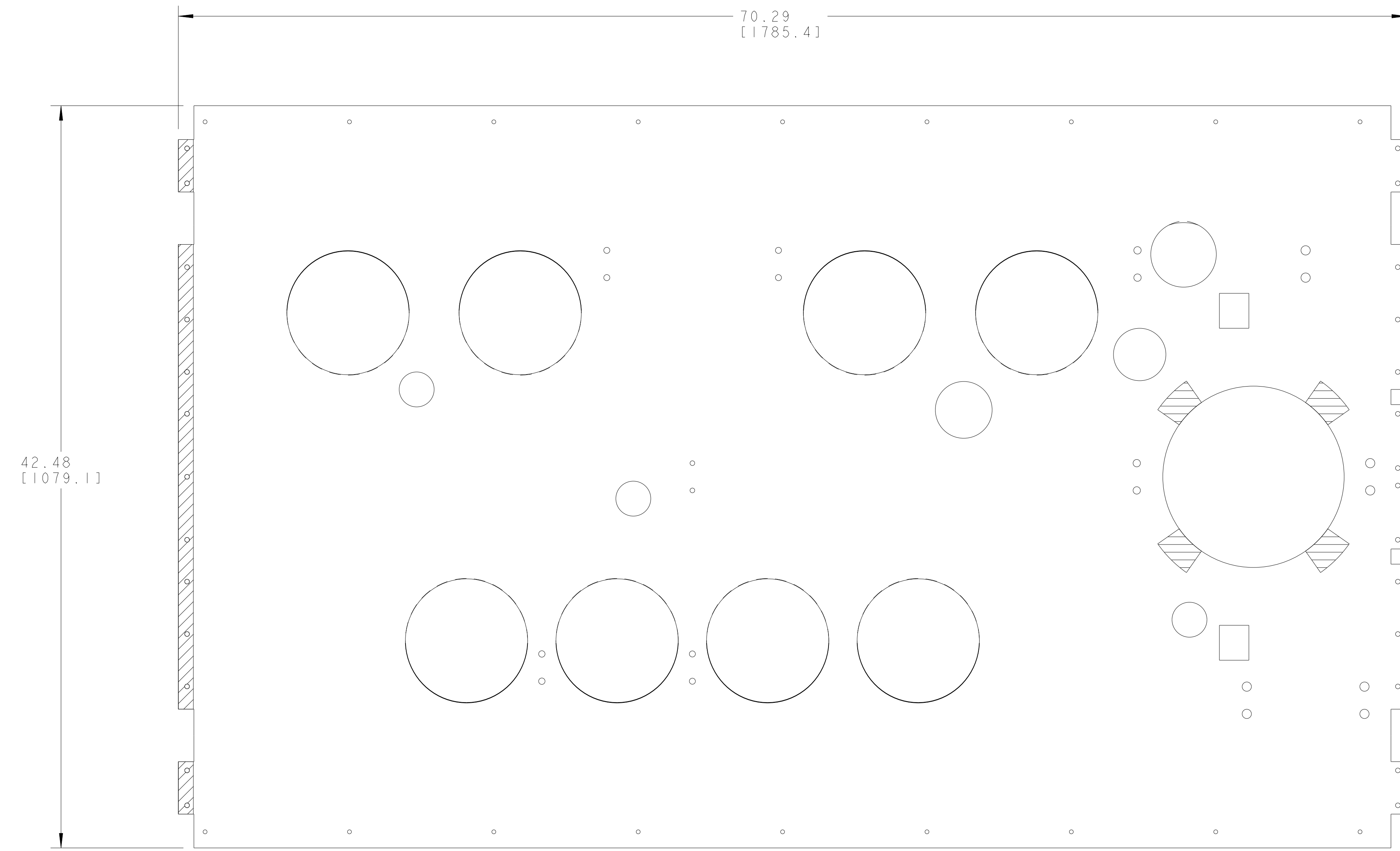
A

D

C

B

A



**FLAT PATTERN
SCALE 1/4**

2516286 A 4

ERNEST ORLANDO LAWRENCE BERKELEY NATIONAL LABORATORY <small>UNIVERSITY OF CALIFORNIA BERKELEY</small>			
LHC IR FEEDBOX CRYOGENICS			
TOP COVER, NEGATIVE SD., DFBXB			
MICROFILMED:	DWG. TYPE	SHOW ON	SCALE
	ASSEM		1/4
PATENT CLEAR:		REVISION NO.:	CATEGORY CODE:
		Z5LCE2	LH2003
		DWG. NO.:	SIZE:
		2516286	A

8

7

6

5

4

3

2

1

NAME: ARHARRIS OBJECT: 2516286_4 DATE: 22-Nov-02 14:01:35