

8

7

6

5

4

3

2

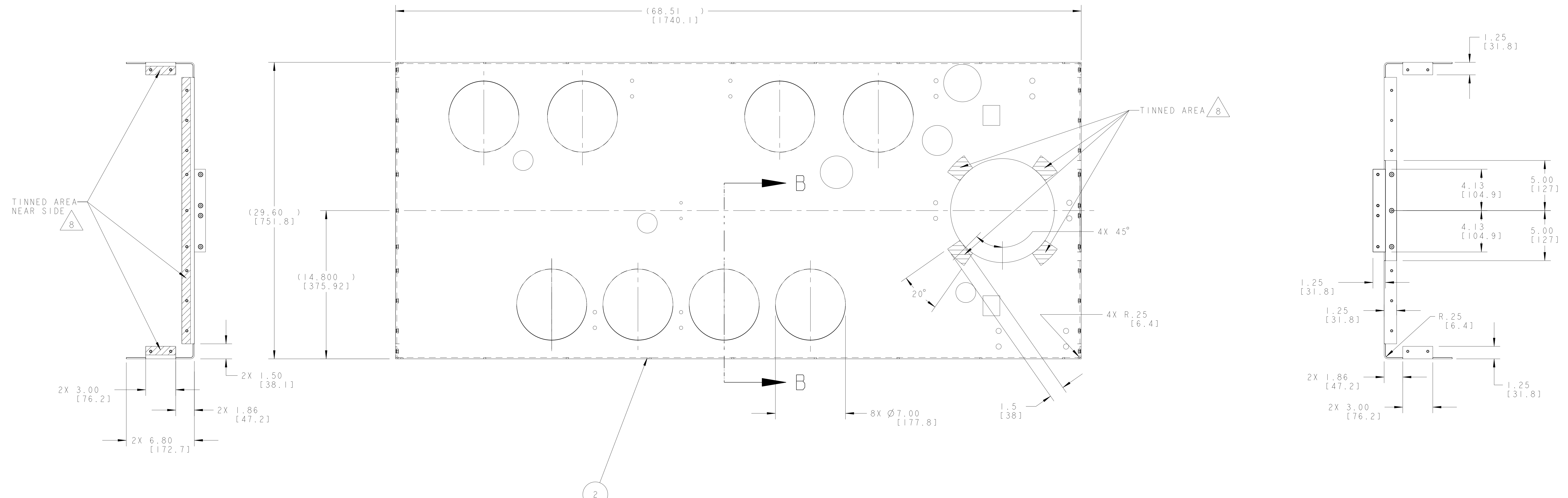
1

D

C

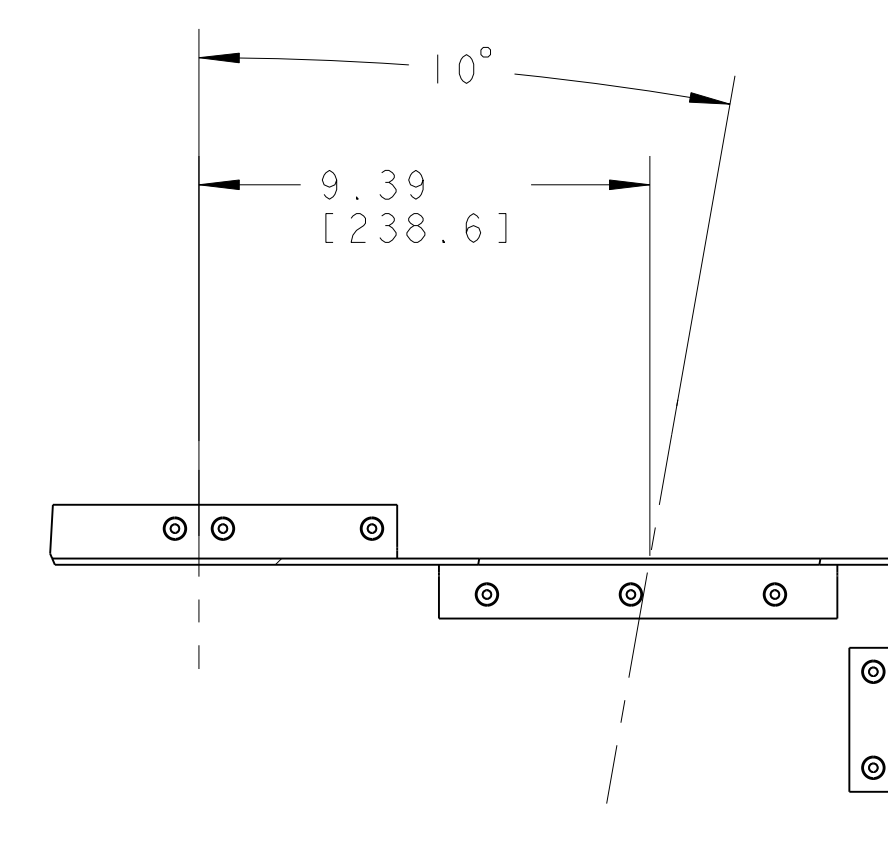
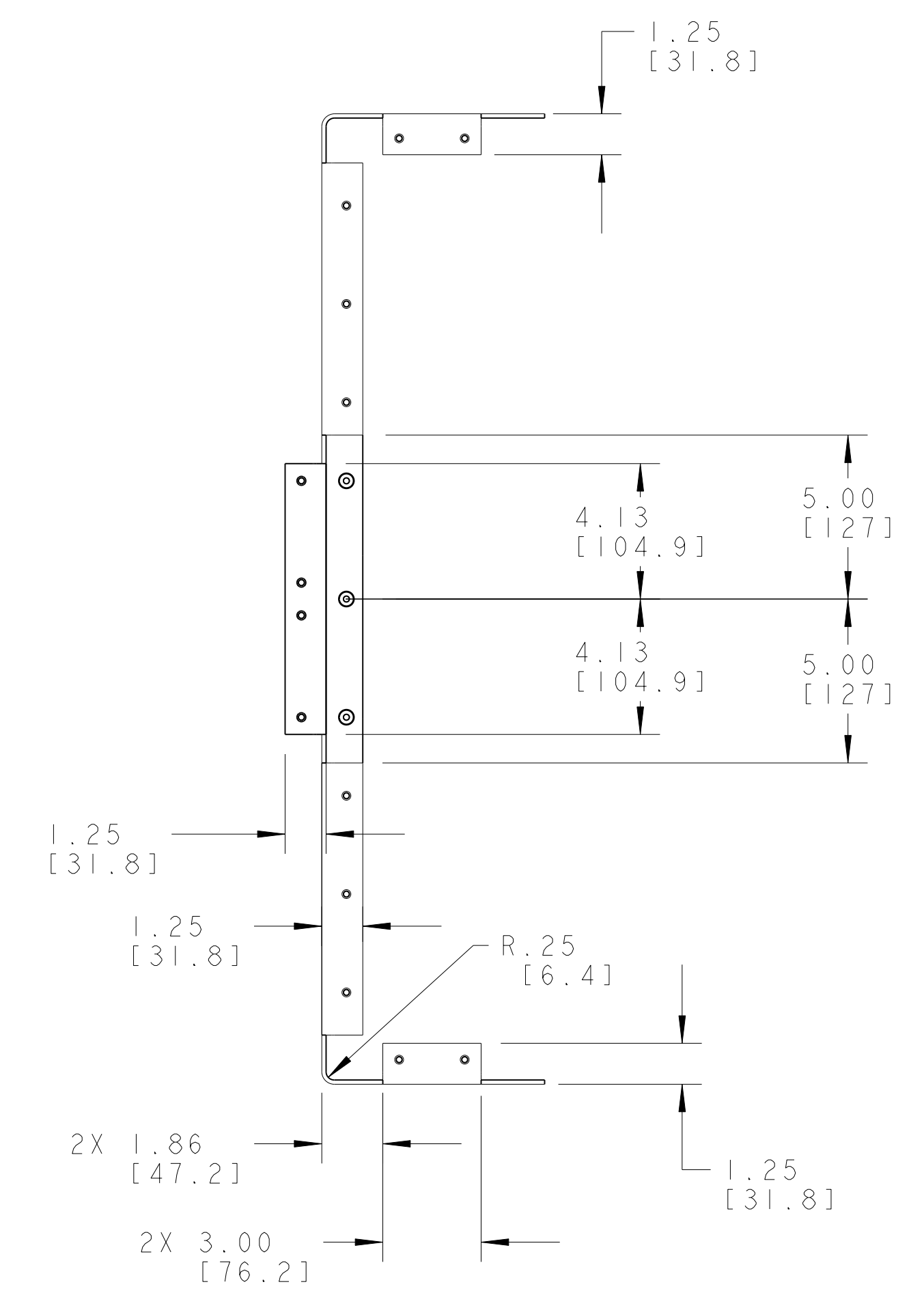
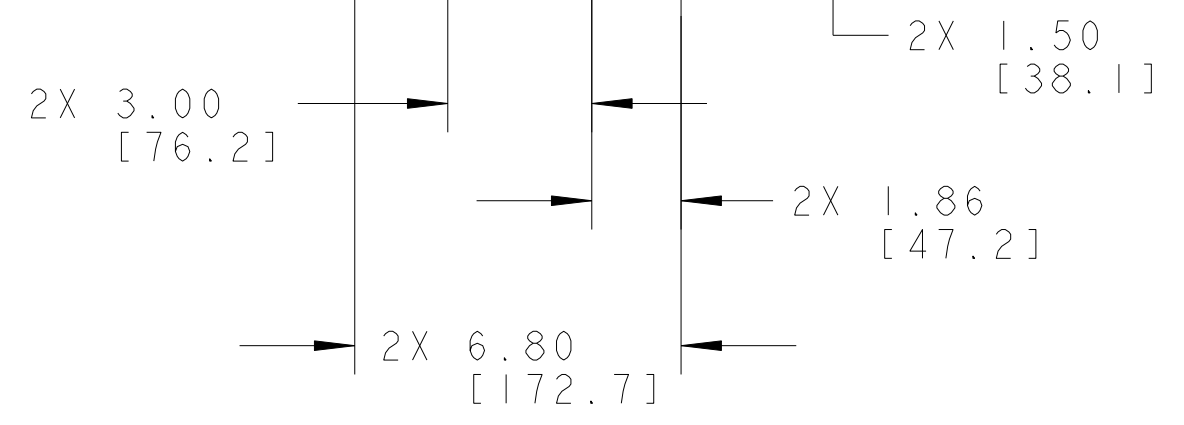
B

A



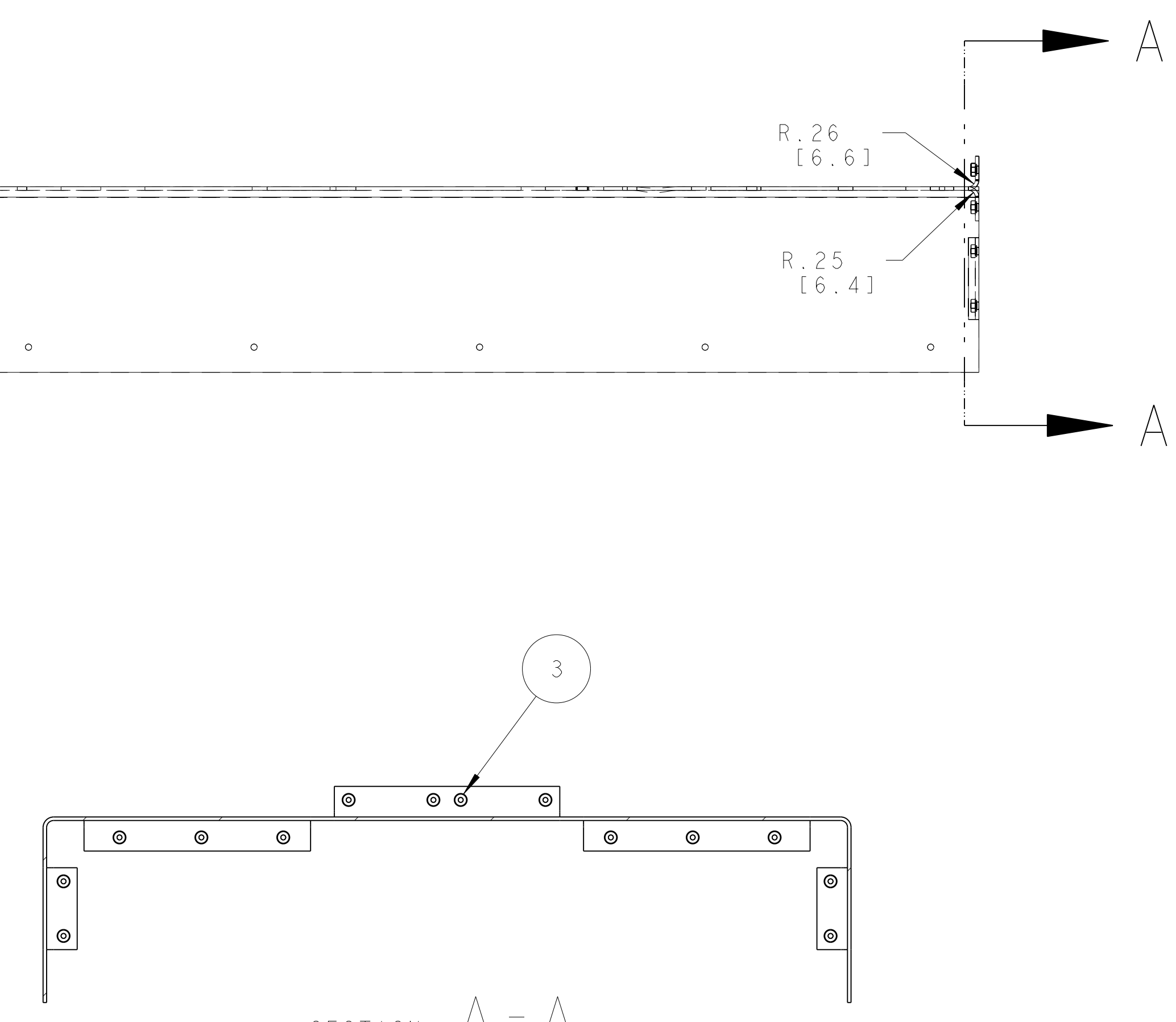
TINNED AREA NEAR SIDE  
8

TINNED AREA  
8

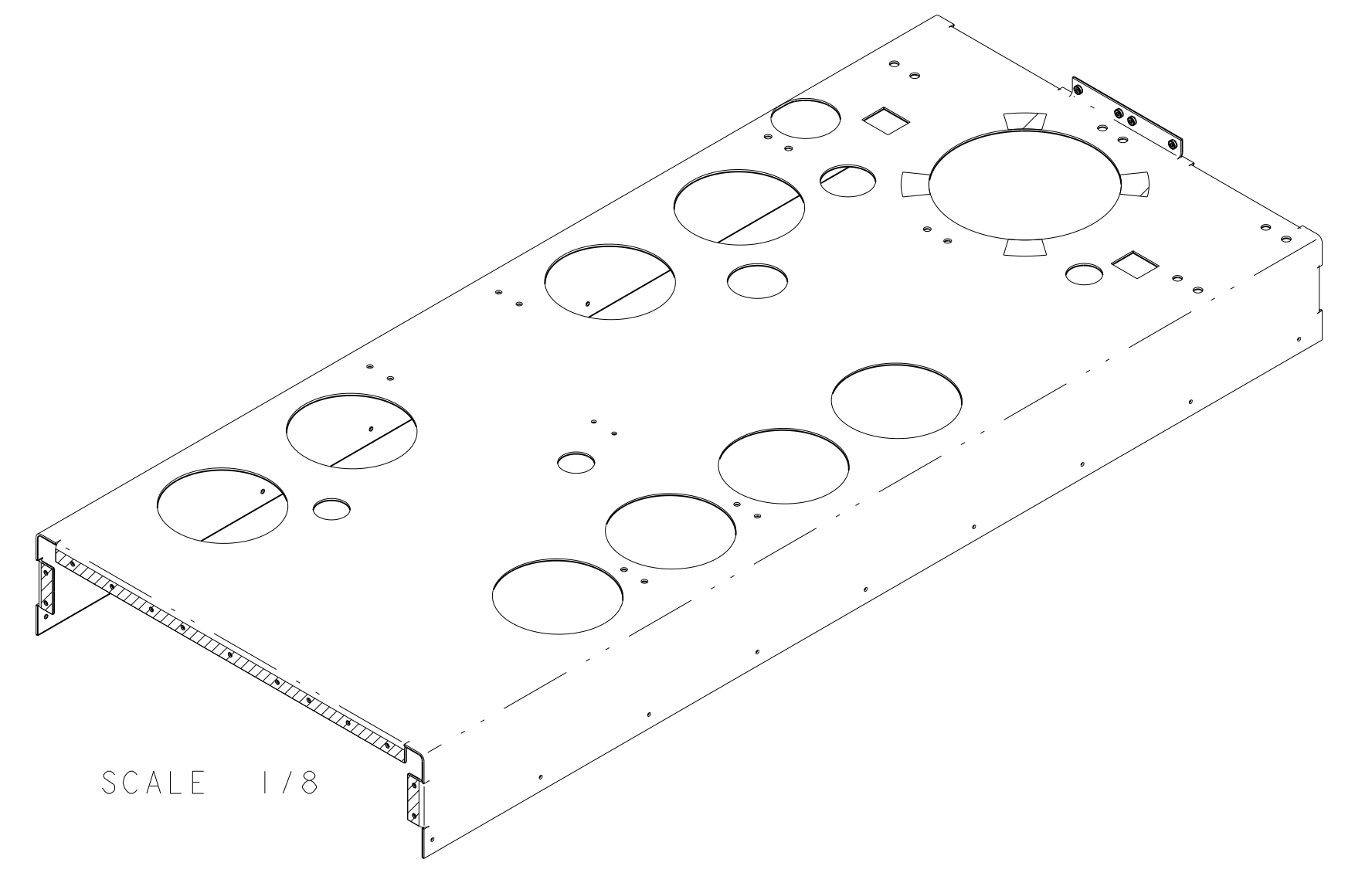


SECTION B-B  
8 PLACES

(.13 [3.3] THICK)

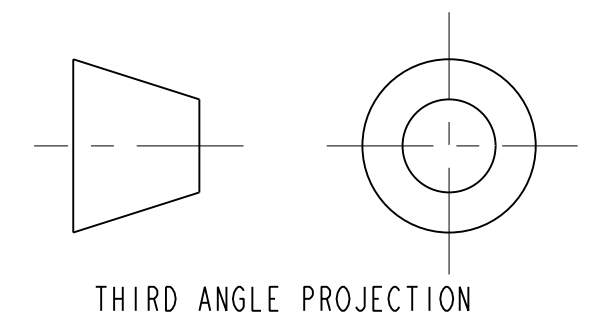


SECTION A-A



NOTES: (UNLESS OTHERWISE SPECIFIED)

1. THIS IS A CRYOGENIC VACUUM COMPONENT.
2. WELDING PROCEDURE: PER VENDOR SPECIFICATION WITH LBNL APPROVAL.
3. CLEANING PROCEDURE: PER VENDOR SPECIFICATION WITH LBNL APPROVAL.
4. PACKAGING AND STORAGE PROCEDURE OF THE COMPONENTS: PER VENDOR SPECIFICATION WITH LBNL APPROVAL.
5. DIMENSIONS AND TOLERANCING PER ANSI Y14.5M-1982. UNITS ARE IN INCHES [mm] UNLESS OTHERWISE SPECIFIED.
6. USE OF SULFUR OR SILICONE BEARING OILS, LUBRICANTS, OR COOLANTS ARE STRICTLY PROHIBITED.
7. USE OF RESIN OR RUBBER BONDED ABRASIVES UNDER POWER IS STRICTLY PROHIBITED. USE VITREOUS BONDED ABRASIVES ONLY.
8. TIN NOTED AREAS WITH 60/40 Sn/Pb SOLDER, USE RESIN FLUX.



REV	DWG	CHK	ZONE	DATE	DESCRIPTION
A	ARH	SPY		8/19/02	INITIAL RELEASE
					CHANGES

ITEM	PART NO	REQD	DESCRIPTION	MATERIAL
3	-	27	MS CAPTIVE NUT, PEM-AC-MS-1-SF	SS
2	-	1	SHEET, .125 THICK	COPPER, OFHC, C101

UNLESS OTHERWISE SPECIFIED  
 X.X ± 0.1 FRACTION ± 1/64  
 X.XX ± 0.03 ANGLES ± 1.0°  
 X.XXX ± 0.010 FINISH  
 CHAMFER ENDS OF ALL SCREW THREADS 30°  
 CUT ROUNDS, 1.5 THREAD RELIEF ON MACHINED THREADS  
 BREAK EDGES .156 MAX. ON MACHINED WORK  
 REMOVE BURRS, WELD SPATTER & LOOSE SCALE  
 IN ACCORDANCE WITH ASME B1.3.9 & B.86.1

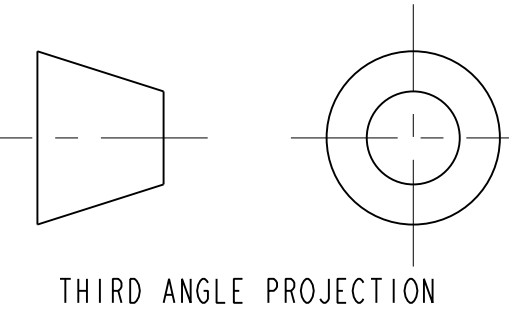
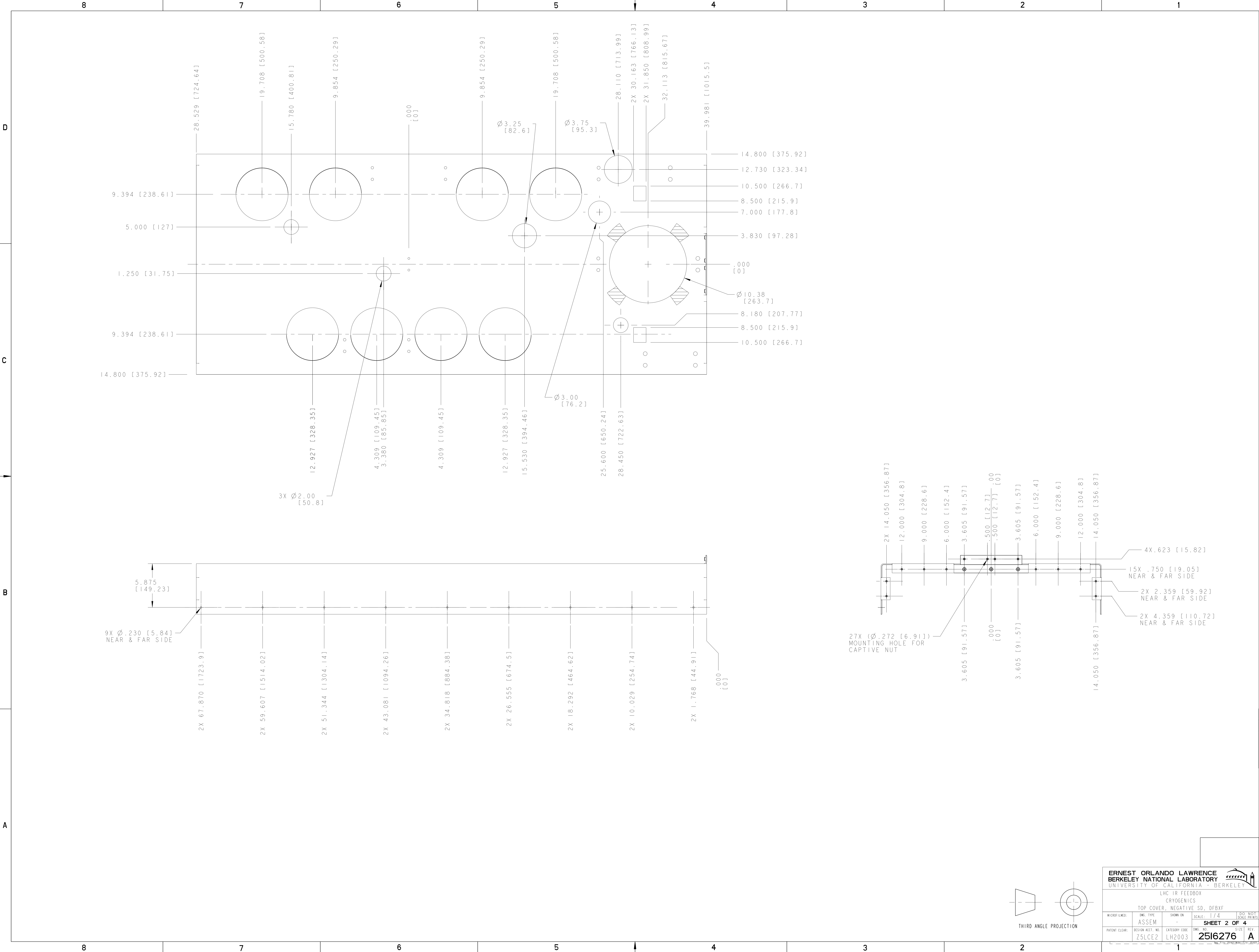
SHOP ORDERS  
 SURFACE FINISH: TAG  
 PROJECT: N/A  
 DRAWING: N/A  
 NAME: L.A. MANTUA  
 DATE: 18-FEB-02  
 BY: Jan Zbanski/S. Wroblewski  
 DATE: 13-AUG-02  
 BY: Jan Zbanski/D. Oshetz  
 DATE: 13-AUG-02

ERNEST ORLANDO LAWRENCE  
 BERKELEY NATIONAL LABORATORY  
 UNIVERSITY OF CALIFORNIA BERKELEY

LHC IR FEEDBOX  
 CRYOGENICS  
 TOP COVER, NEGATIVE SD, DFBXF  
 DWG. TYPE: ASSEM  
 SCALE: 1/4  
 SHEET 1 OF 4  
 Z5LCE2 LH2003 2516276 A

NAME: ARHARRIS OBJECT: 2516276\_1 DATE: 22-Nov-02 14:05:38

2516276 A 1



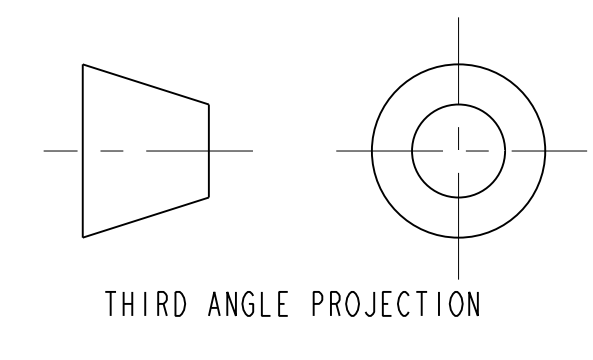
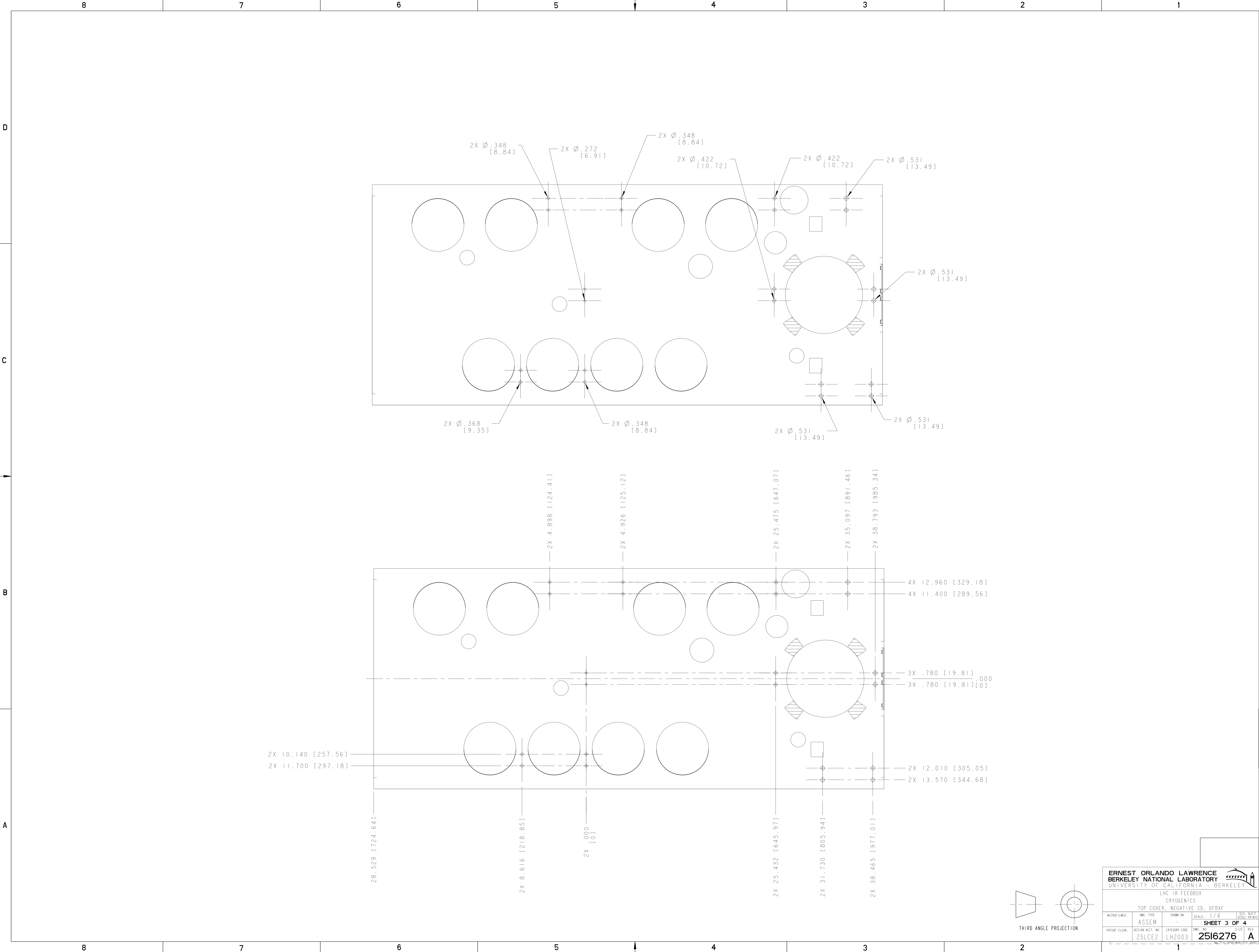
**ERNEST ORLANDO LAWRENCE  
BERKELEY NATIONAL LABORATORY**  
UNIVERSITY OF CALIFORNIA BERKELEY

LHC IR FEEDBOX  
CRYOGENICS  
TOP COVER, NEGATIVE SD., DFBXF

MICROFILMED:	DWG. TYPE:	SHOW ON:	SCALE:	DO NOT CHECK PRINTS
	ASSEM		1/4	
PATENT CLEAR:	DESIGN ACCT. NO:	CATEGORY CODE:	DWG. NO.:	SIZE: REV.
	Z5LCE2	LH2003	2516276	A

SHEET 2 OF 4

NAME: ARHARRIS OBJECT: 251627.3 DATE: 22-Nov-02 14:05:41



ERNEST ORLANDO LAWRENCE  
BERKELEY NATIONAL LABORATORY  
UNIVERSITY OF CALIFORNIA BERKELEY

LHC IR FEEDBOX  
CRYGENICS

TOP COVER, NEGATIVE SD., DFBXF

MICROFILMED:	DWG. TYPE:	SHOW ON:	SCALE:	DWG. NO.:
	ASSEM		1/4	2516276
PATENT CLEAR:	REVISION ACCT. NO.:	CATEGORY CODE:	DWG. NO.:	SIZE:
	Z5LCE2	LH2003	2516276	A

SHEET 3 OF 4

2516276 A 3

8

7

6

5

4

3

2

1

D

C

B

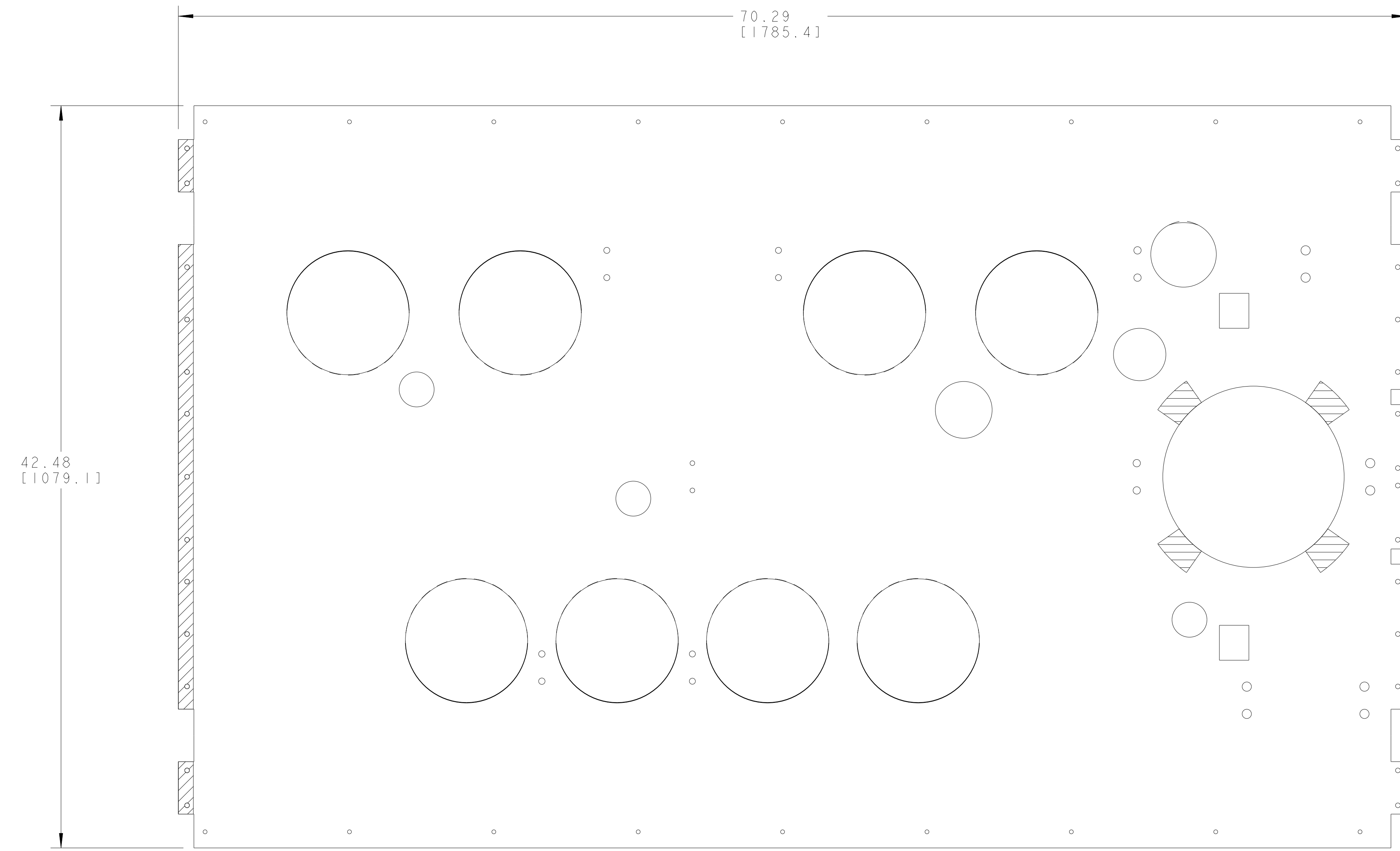
A

D

C

B

A



**FLAT PATTERN  
SCALE 1/4**

2516276 A 4

<b>ERNEST ORLANDO LAWRENCE</b> <b>BERKELEY NATIONAL LABORATORY</b> <small>UNIVERSITY OF CALIFORNIA BERKELEY</small>			
LHC IR FEEDBOX CRYOGENICS			
TOP COVER, NEGATIVE SD., DFBXF			
MICROFILMED:	DWG. TYPE	SHOW ON	SCALE
	ASSEM		1/4
PATENT CLEAR:		REVISION NO.:	CATEGORY CODE:
		Z5LCE2	LH2003
		DWG. NO.:	SIZE:
		<b>2516276</b>	<b>A</b>
		REV.:	

8

7

6

5

4

3

2

1

NAME: ARHARRIS OBJECT: 2516276\_4 DATE: 22-Nov-02 14:05:43