

8

7

6

5

4

3

2

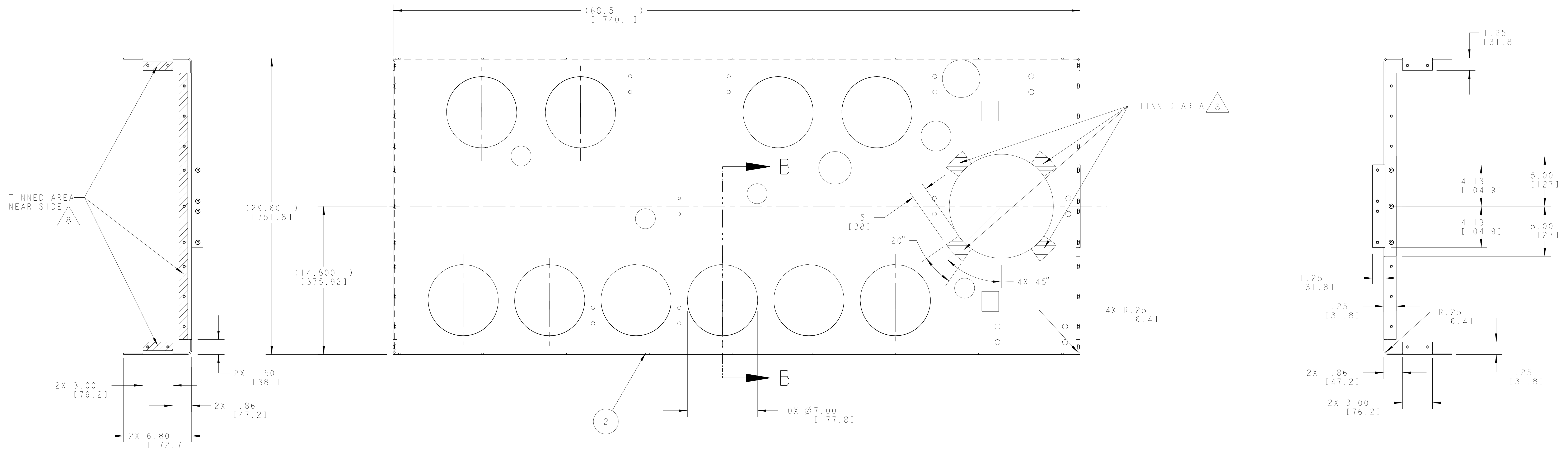
1

D

C

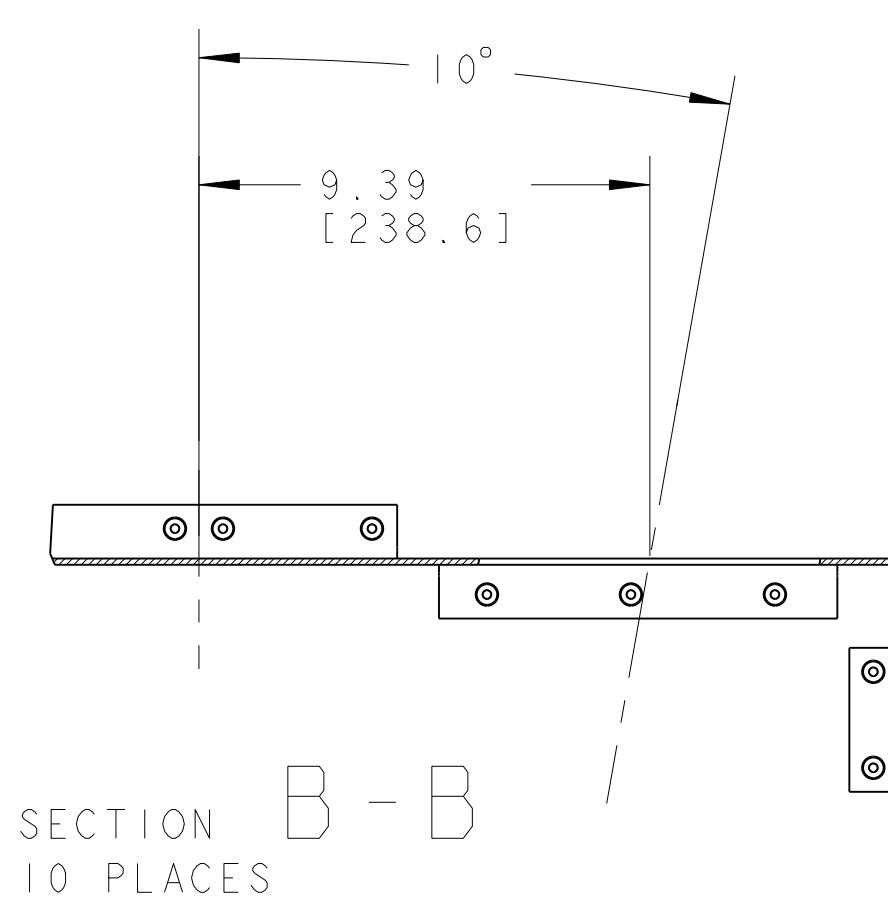
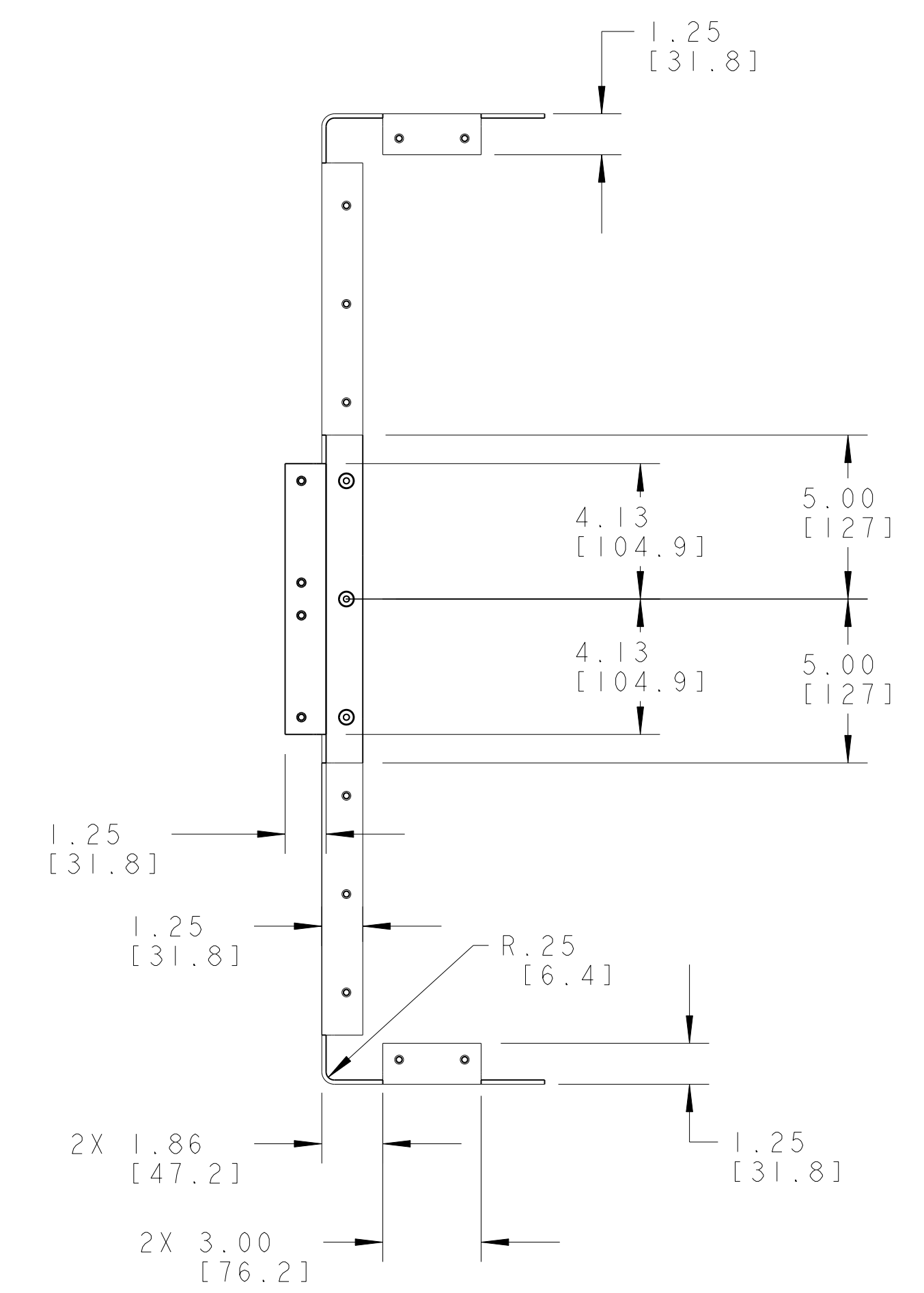
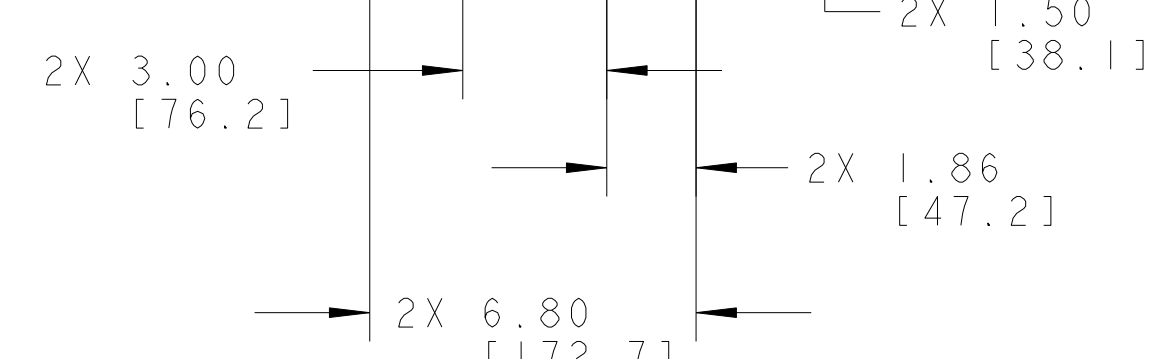
B

A

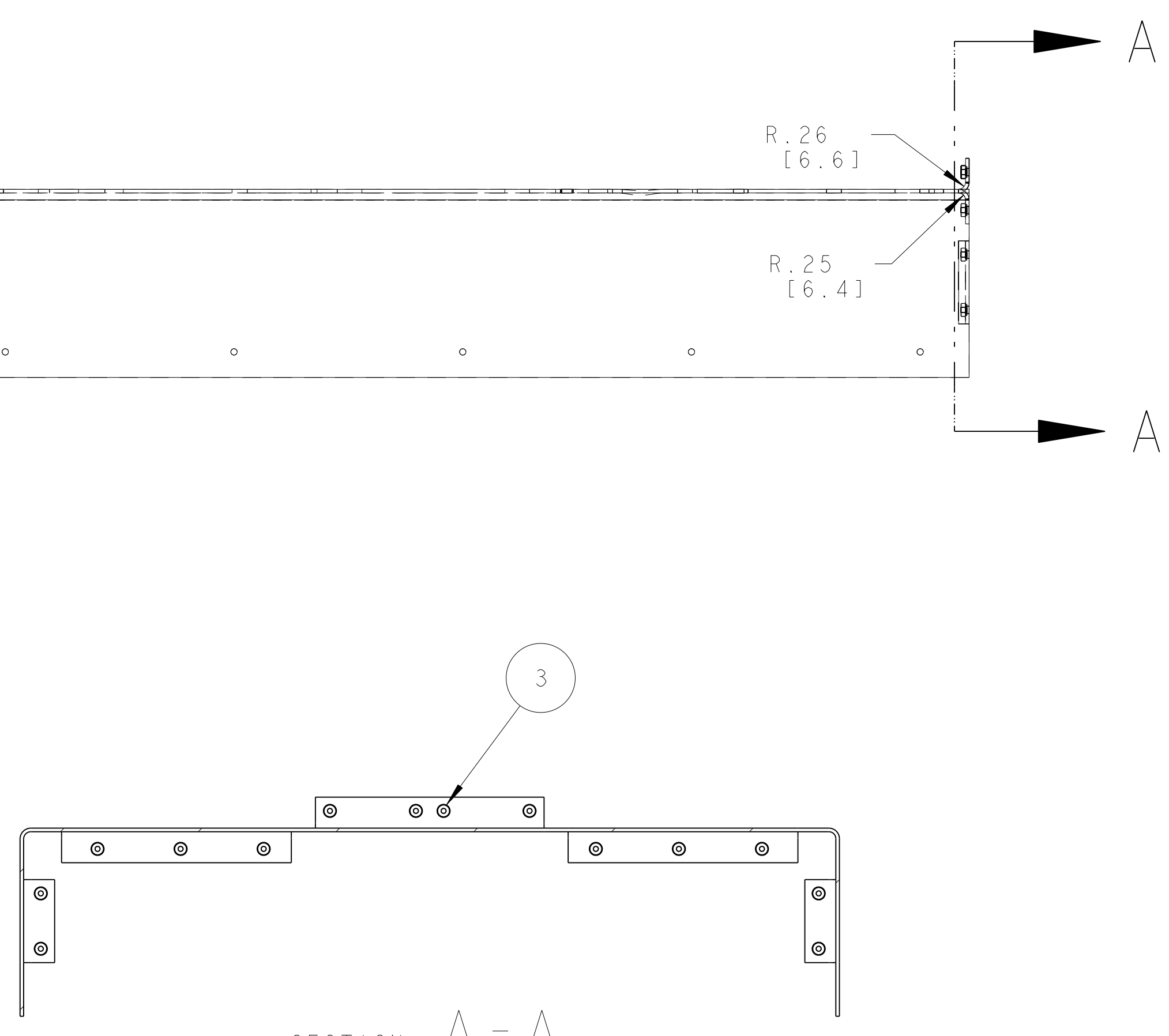


TINNED AREA  
NEAR SIDE  
8

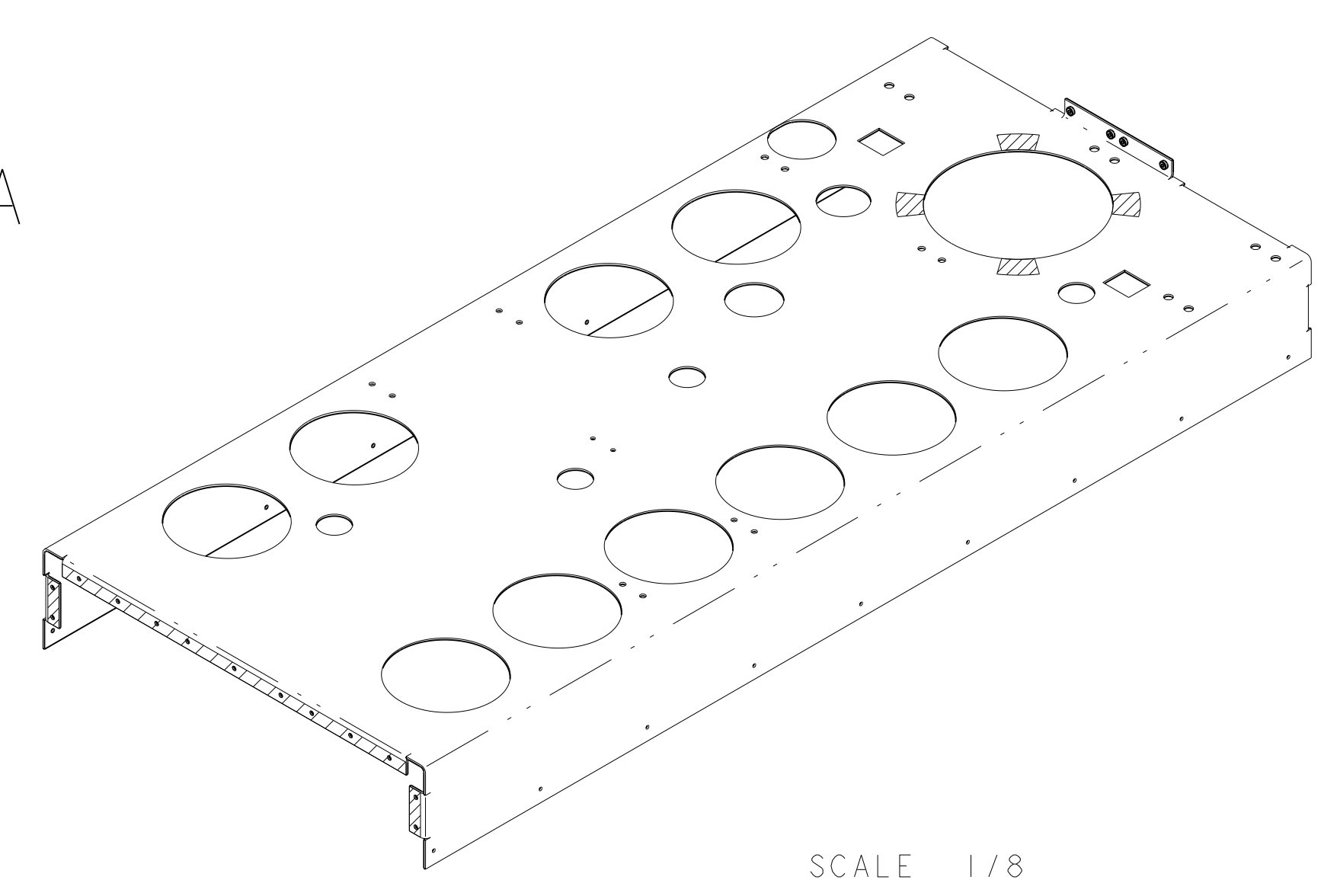
TINNED AREA  
8



1.13 [3.3] THICK



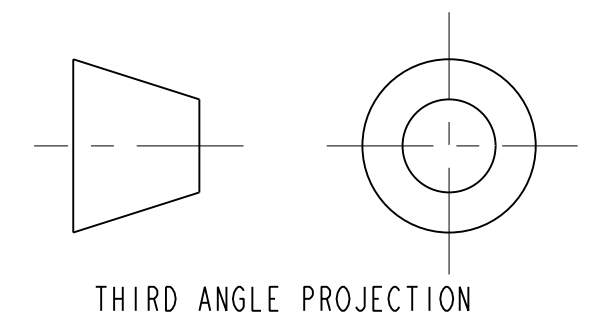
SECTION A - A



SCALE 1/8

NOTES: (UNLESS OTHERWISE SPECIFIED)

1. THIS IS A CRYOGENIC VACUUM COMPONENT.
2. WELDING PROCEDURE: PER VENDOR SPECIFICATION WITH LBNL APPROVAL.
3. CLEANING PROCEDURE : PER VENDOR SPECIFICATION WITH LBNL APPROVAL.
4. PACKAGING AND STORAGE PROCEDURE OF THE COMPONENTS: PER VENDOR SPECIFICATION WITH LBNL APPROVAL.
5. DIMENSIONS AND TOLERANCING PER ANSI Y14.5M-1982. UNITS ARE IN INCHES [mm] UNLESS OTHERWISE SPECIFIED.
6. USE OF SULFUR OR SILICONE BEARING OILS, LUBRICANTS, OR COOLANTS ARE STRICTLY PROHIBITED.
7. USE OF RESIN OR RUBBER BONDED ABRASIVES UNDER POWER IS STRICTLY PROHIBITED. USE VITREOUS BONDED ABRASIVES ONLY.
8. TIN NOTED AREAS WITH 60/40 Sn/Pb SOLDER, USE RESIN FLUX.



THIRD ANGLE PROJECTION

|   |             |             |      |  |      |
|---|-------------|-------------|------|--|------|
| UNLESS OTHERWISE SPECIFIED                        |             | SHOP ORDERS |      | ERNEST ORLANDO LAWRENCE<br>BERKELEY NATIONAL LABORATORY<br>UNIVERSITY OF CALIFORNIA BERKELEY |      |
| FINISH  | SEE DRAWING | ITEM        | REQD | DATE   | BY   |
| PLACEMENT   | SEE DRAWING | NO.         | DATE | DATE   | DATE |
| DO NOT SCALE PRINT                                |             | PROJECT     |      |  |      |
| CHAMFER ENDS OF ALL SCREW THREADS 30°             |             | DESCRIPTION |      |  |      |
| CUT ROUNDS, 1.5 THREAD RELIEF ON MACHINED THREADS |             |             |      |  |      |
| BREAK EDGES .156 MAX. ON MACHINED WORK            |             |             |      |  |      |
| REMOVE BURRS, WELD SPATTER & LOOSE SCALE          |             |             |      |  |      |
| IN ACCORDANCE WITH ASME Y14.5M & B&E.1            |             |             |      |  |      |

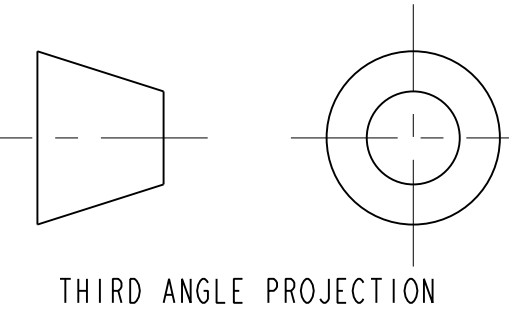
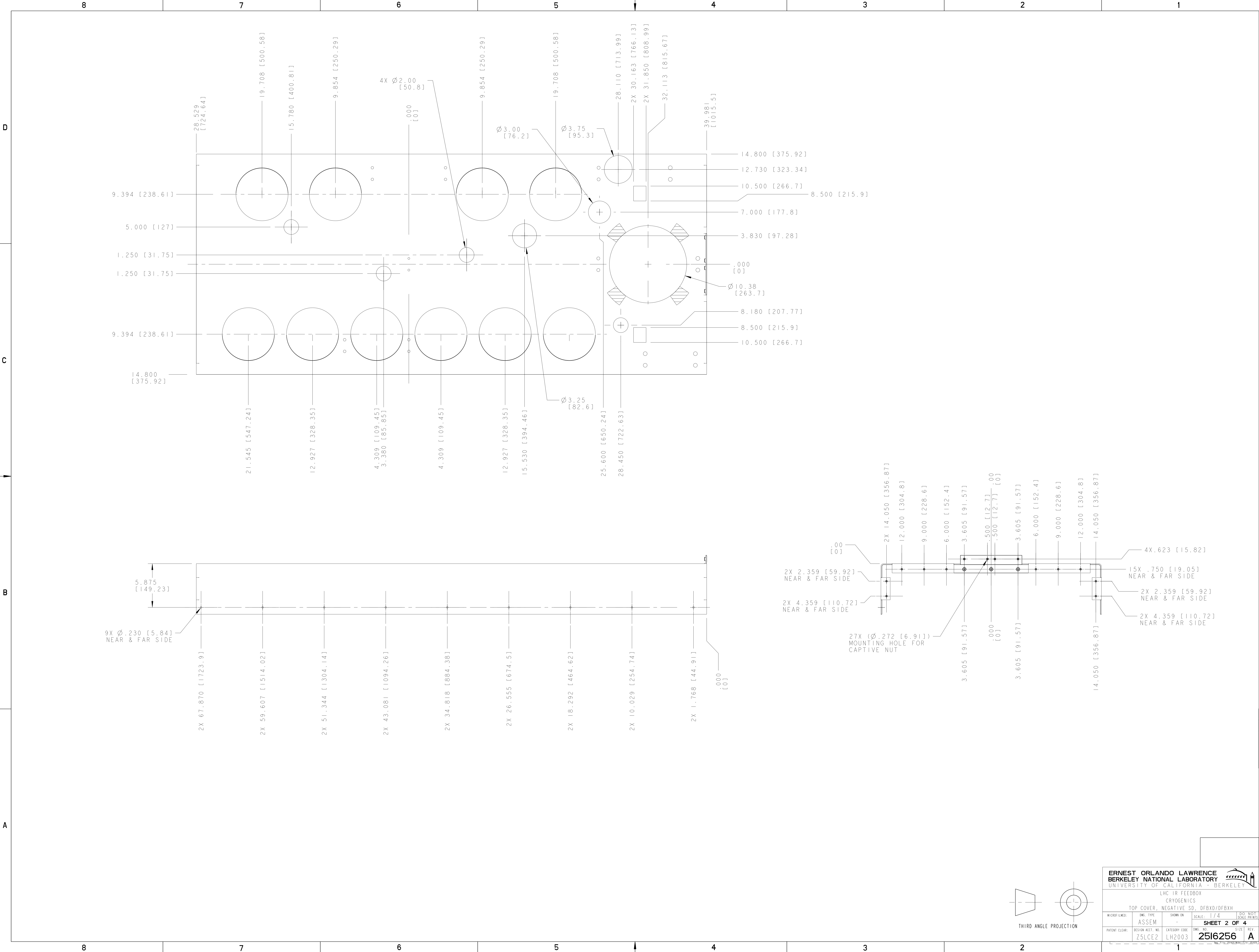
  

|                                       |   |    |                                |                    |
|---------------------------------------|---|----|--------------------------------|--------------------|
| 3                                     | - | 27 | MS CAPTIVE NUT, PEM-AC-MS-1-SF | SS                 |
| 2                                     | - | 1  | SHEET, .125 THICK              | COPPER, OFHC, C101 |
| LHC IR FEEDBOX CRYOGENICS             |   |    |                                |                    |
| TOP COVER, NEGATIVE SD, DFBXD/DFBXH   |   |    |                                |                    |
| ASSEM                                 |   |    |                                |                    |
| SCALE: 1/4                            |   |    |                                |                    |
| SHEET 1 OF 4                          |   |    |                                |                    |
| PATENT CLEAR: REVIEW ACCT. NO. Z5LCE2 |   |    |                                |                    |
| CATEGORY CODE LH2003                  |   |    |                                |                    |
| DWG. NO. 2516256                      |   |    |                                |                    |
| REV. 4                                |   |    |                                |                    |

NAME: ARHARRIS OBJECT: 251625.1 DATE: 27-Nov-02 07:06:41

2516256 A 1

NAME: ARHARRIS OBJECT: 251625.2 DATE: 27-Nov-02 07:08:42



**ERNEST ORLANDO LAWRENCE**  
**BERKELEY NATIONAL LABORATORY**  
 UNIVERSITY OF CALIFORNIA BERKELEY

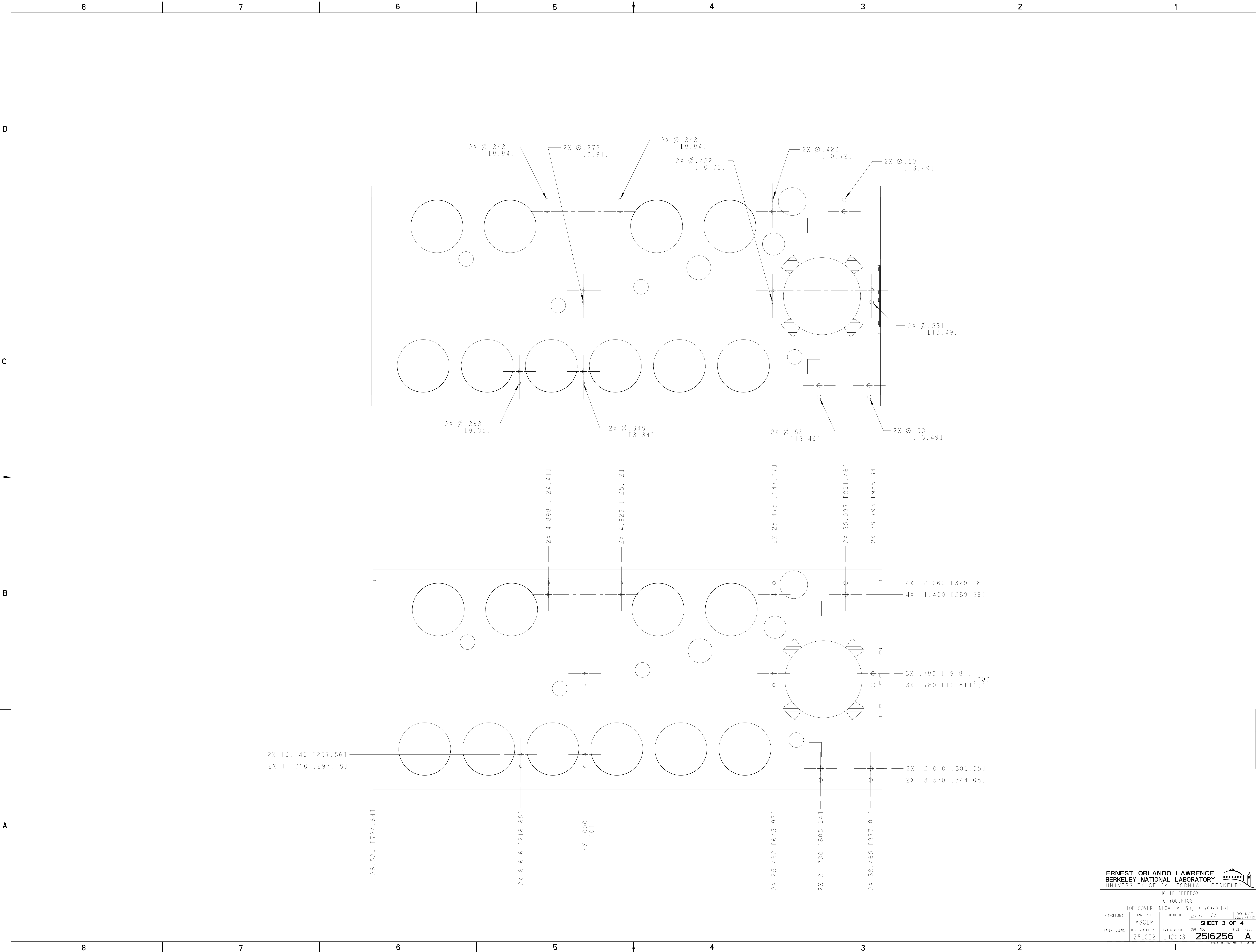
LHC IR FEEDBOX  
 CRYOGENICS  
 TOP COVER, NEGATIVE SD, DFBXD/DFBXH

|               |                    |                |           |       |                        |
|---------------|--------------------|----------------|-----------|-------|------------------------|
| MICROFILMED:  | DWG. TYPE:         | SHOW ON:       | SCALE:    | 1/4   | DO NOT<br>CHECK PRINTS |
|               | ASSEM              |                |           |       |                        |
| PATENT CLEAR: | REVISION ACCT. NO: | CATEGORY CODE: | DWG. NO.: | REV.: | SIZE:                  |
|               | Z5LCE2             | LH2003         | 2516256   | 4     | A                      |

**SHEET 2 OF 4**

2516256 A 2

NAME: ARHARRIS OBJECT: 251625.3 DATE: 27-Nov-02 07:06:44



|   |                  |                        |          |
|---|------------------|------------------------|----------|
| <b>ERNEST ORLANDO LAWRENCE</b><br><b>BERKELEY NATIONAL LABORATORY</b><br><small>UNIVERSITY OF CALIFORNIA BERKELEY</small> |                  |                        |          |
| LHC IR FEEDBOX<br>CRYOGENICS  |                  |                        |          |
| TOP COVER, NEGATIVE SD, DFBXD/DFBXH   |                  |                        |          |
| MICROFILMED:  | DRG. TYPE        | SHOW ON                | SCALE    |
|   | ASSEM            |                        | 1/4      |
| SHEET 3 OF 4  |                  | DO NOT<br>SCALE PRINTS |          |
| PATENT CLEAR:   | DESIGN ACCT. NO. | CATEGORY CODE          | DRG. NO. |
|   | Z5LCE2           | LH2003                 | 2516256  |
| SIZE: A   |                  | REV:                   |          |

2516256 A 3

8

7

6

5

4

3

2

1

D

C

B

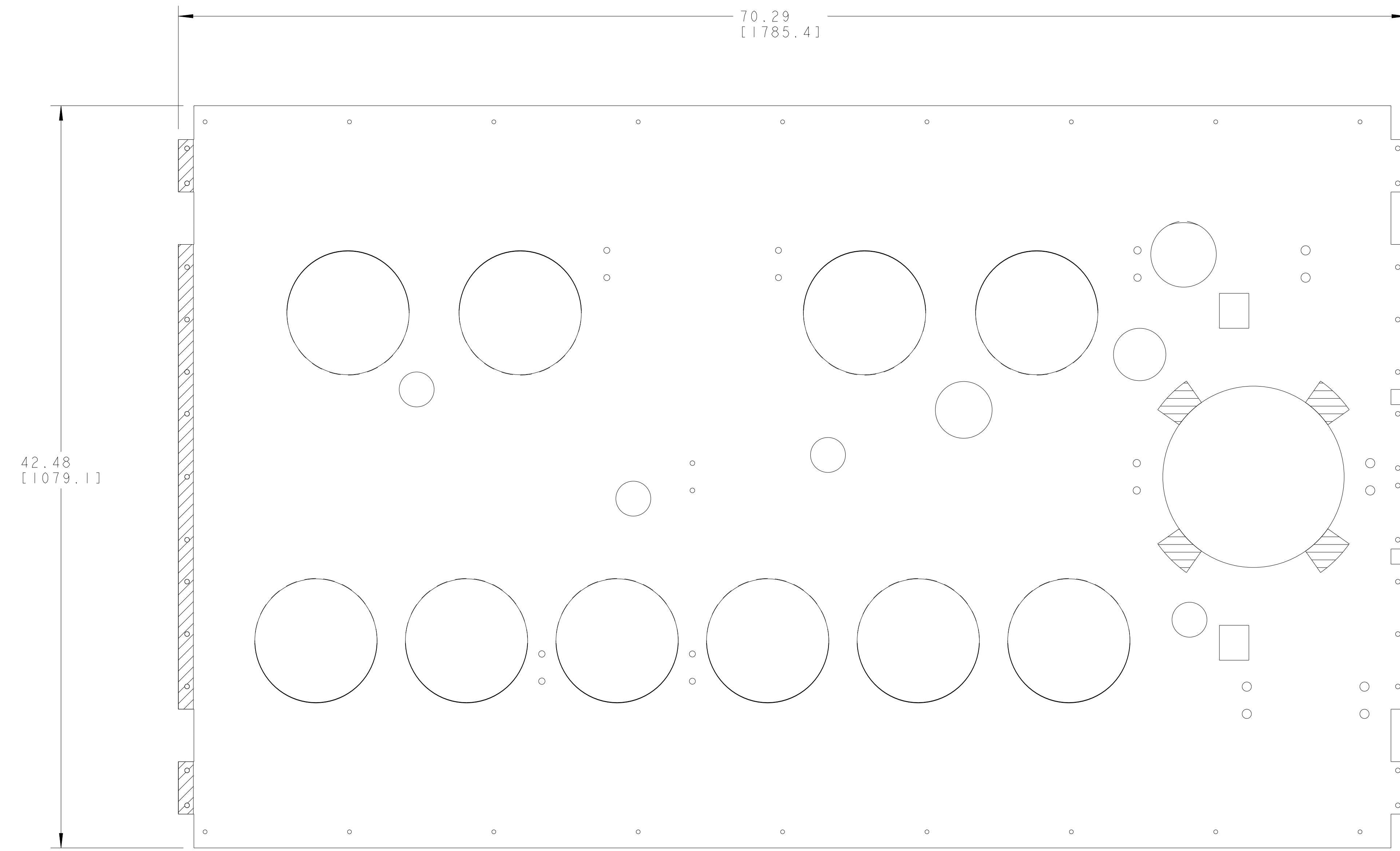
A

D

C

B

A



**FLAT PATTERN  
SCALE 1/4**

2516256 A 4

|   |            |                |            |
|---|------------|----------------|------------|
| <b>ERNEST ORLANDO LAWRENCE</b><br>BERKELEY NATIONAL LABORATORY<br>UNIVERSITY OF CALIFORNIA BERKELEY |            |                |            |
| LHC IR FEEDBOX<br>CRYOGENICS  |            |                |            |
| TOP COVER, NEGATIVE SD, DFBXD/DFBXH   |            |                |            |
| MICROFILMED:  | DWG. TYPE: | SHOW ON:       | SCALE: 1/4 |
|   | ASSEM      |                |            |
| PATENT CLASS: Z5LCE2  |            | REVISION NO.:  | REV.:      |
|   |            | CATEGORY CODE: | SIZE: A    |
|   |            | DWG. NO.:      | REV.:      |
|   |            | <b>2516256</b> | <b>A</b>   |

8

7

6

5

4

3

2

1

NAME: ARHARRIS OBJECT: 251625\_4 DATE: 27-Nov-02 07:08:45