

8

7

6

5

4

3

2

1

D

C

B

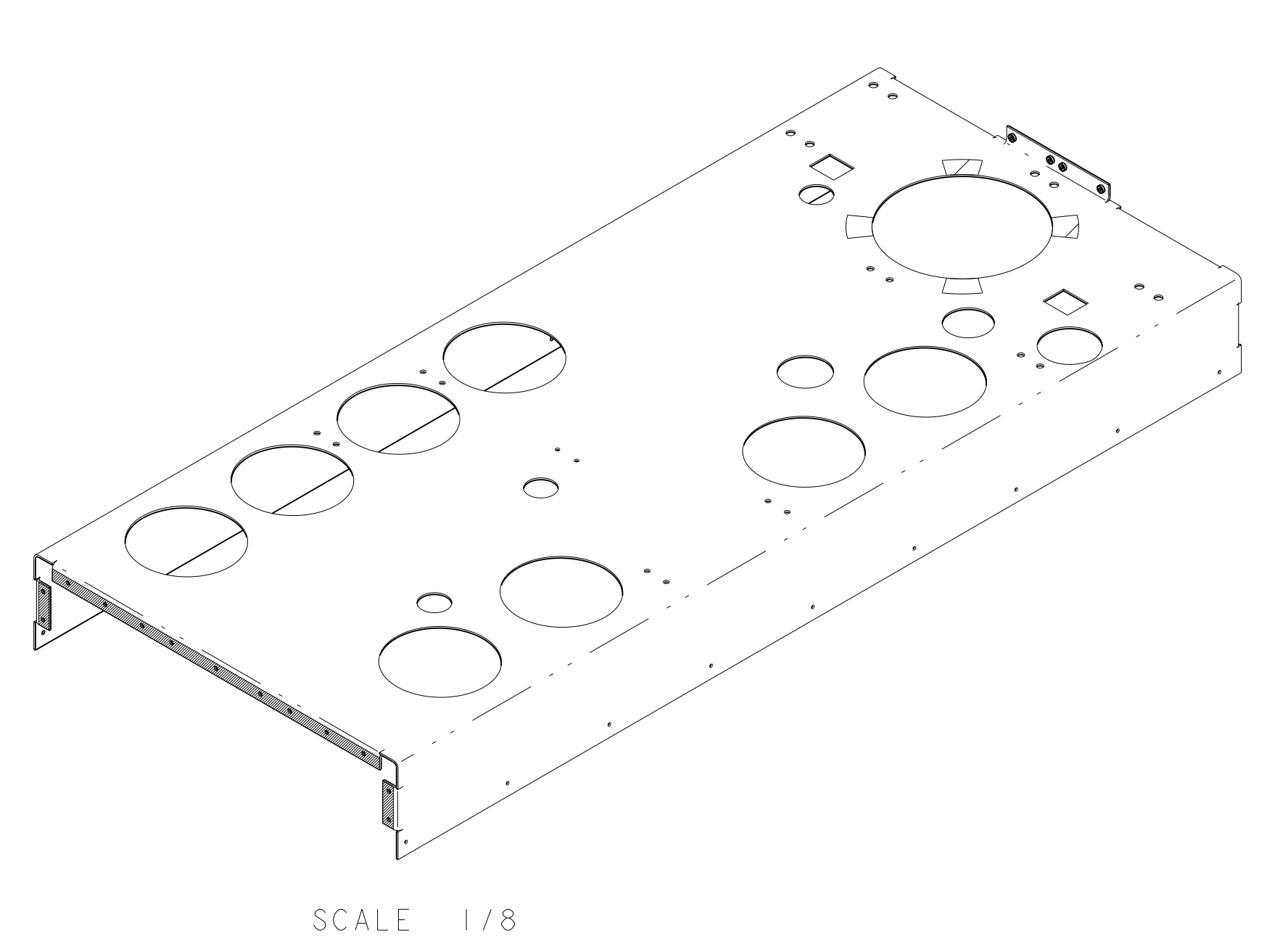
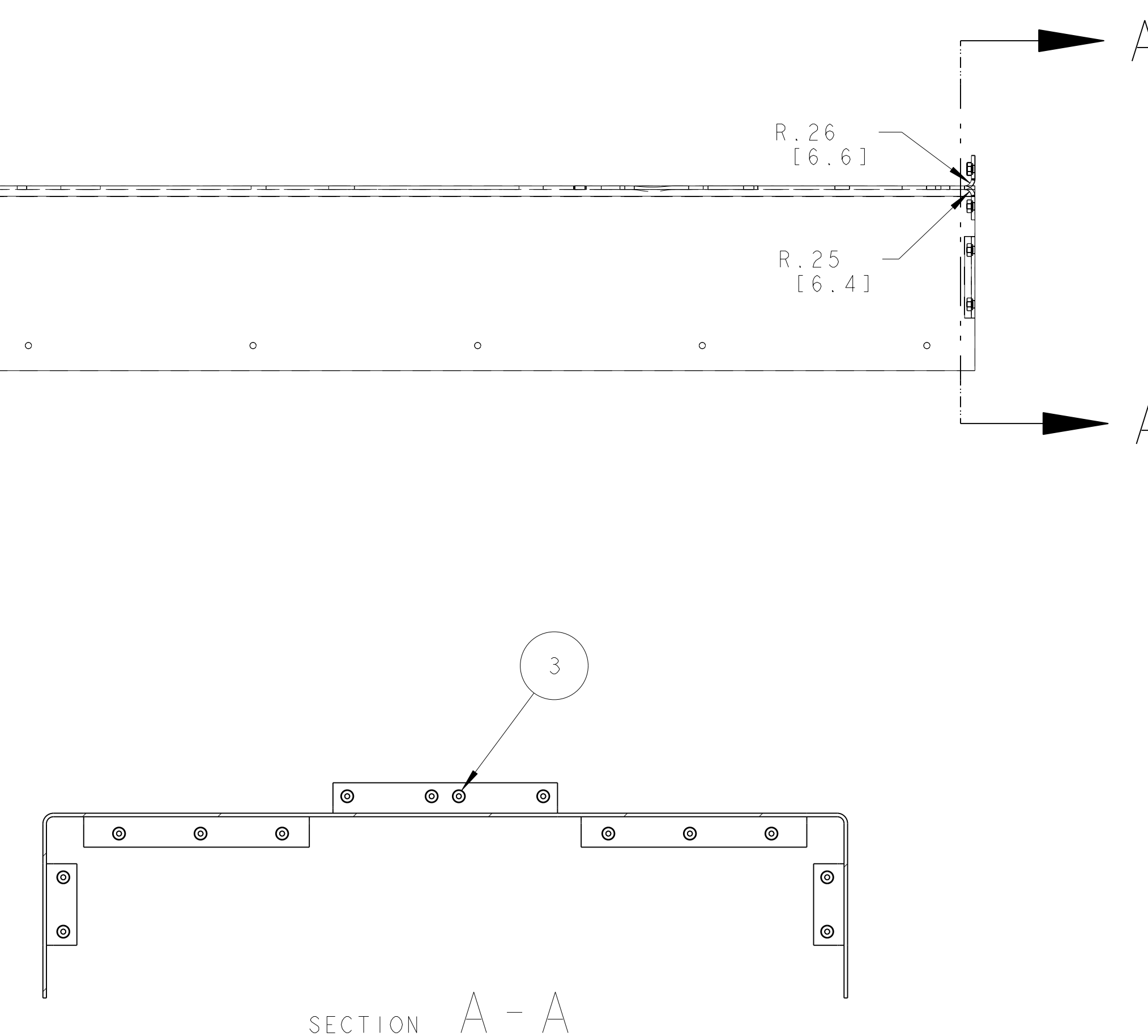
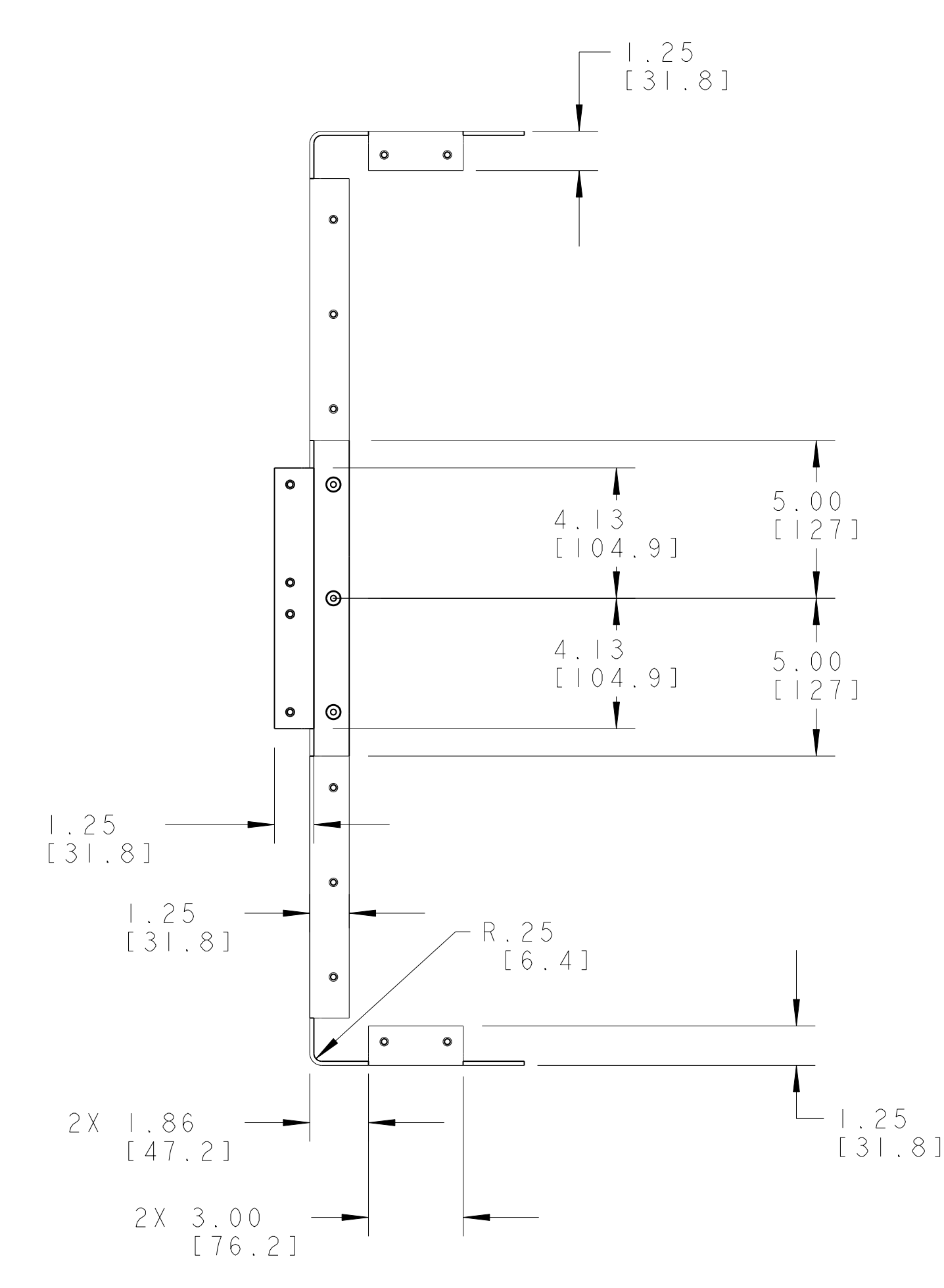
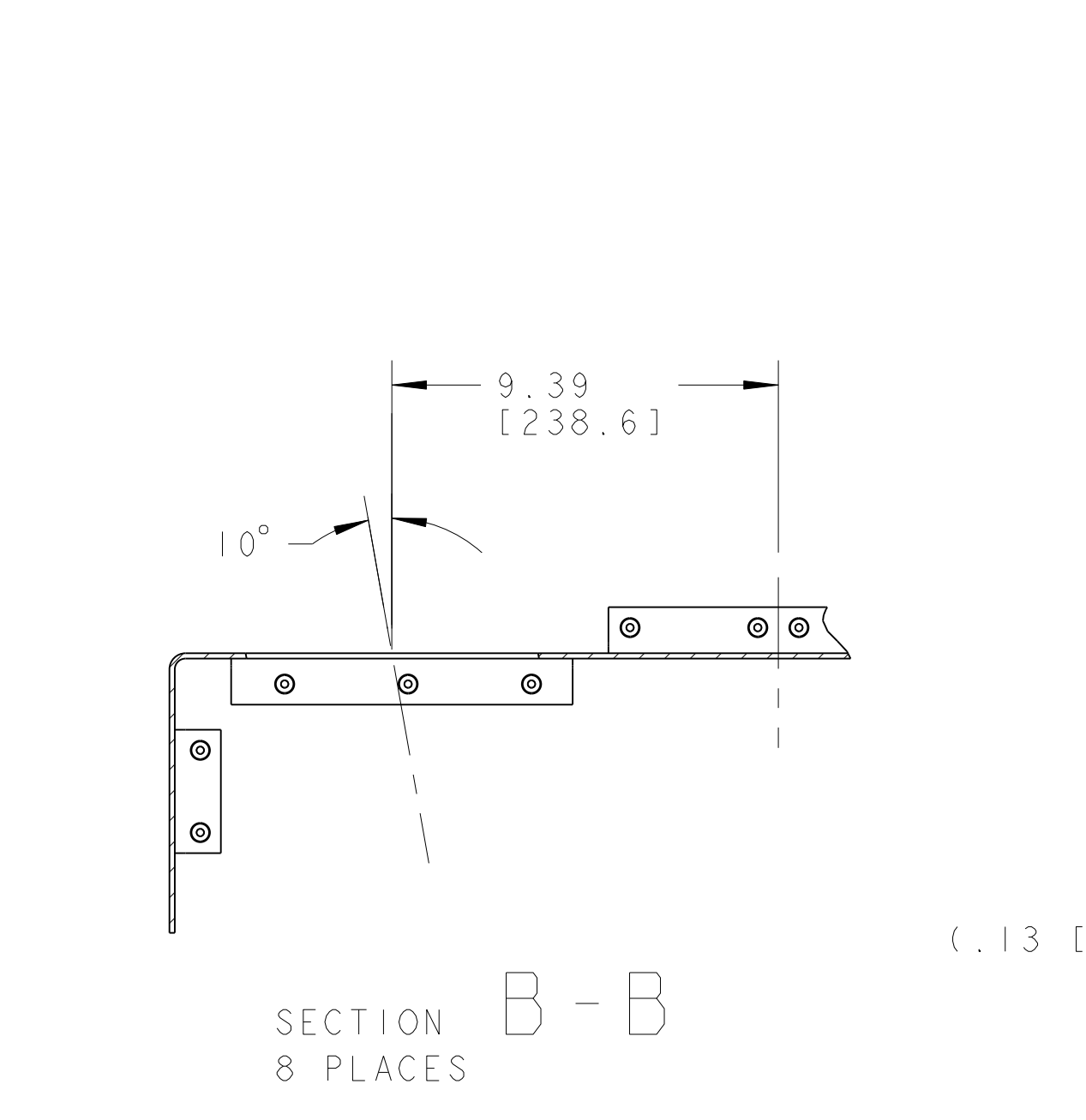
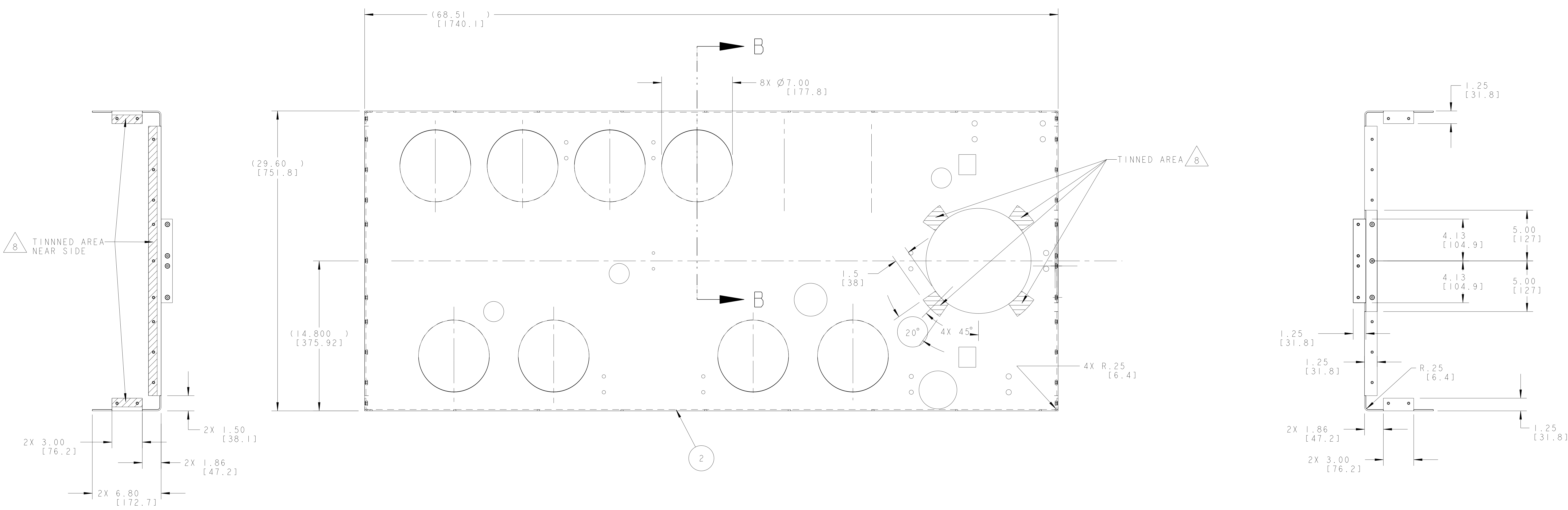
A

D

C

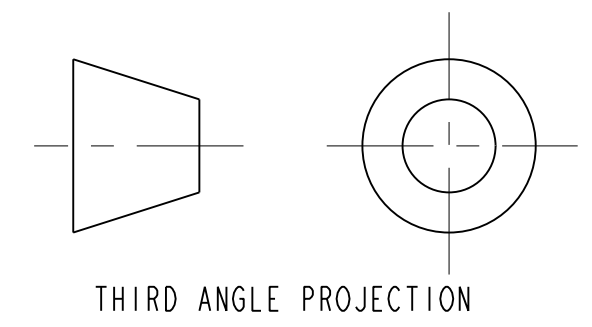
B

A



NOTES: (UNLESS OTHERWISE SPECIFIED)

1. THIS IS A CRYOGENIC VACUUM COMPONENT.
2. WELDING PROCEDURE: PER VENDOR SPECIFICATION WITH LBNL APPROVAL.
3. CLEANING PROCEDURE : PER VENDOR SPECIFICATION WITH LBNL APPROVAL.
4. PACKAGING AND STORAGE PROCEDURE OF THE COMPONENTS: PER VENDOR SPECIFICATION WITH LBNL APPROVAL.
5. DIMENSIONS AND TOLERANCING PER ANSI Y14.5M-1982. UNITS ARE IN INCHES [mm] UNLESS OTHERWISE SPECIFIED.
6. USE OF SULFUR OR SILICONE BEARING OILS, LUBRICANTS, OR COOLANTS ARE STRICTLY PROHIBITED.
7. USE OF RESIN OR RUBBER BONDED ABRASIVES UNDER POWER IS STRICTLY PROHIBITED. USE VITREOUS BONDED ABRASIVES ONLY.
8. TIN NOTED AREAS WITH 60/40 Sn/Pb SOLDER, USE RESIN FLUX.

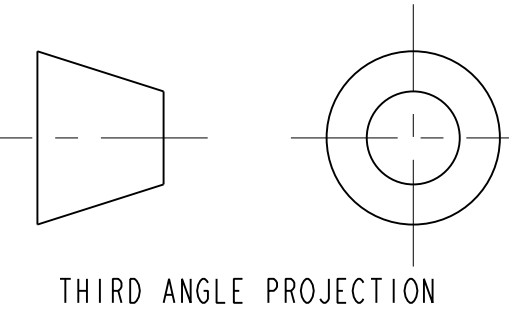
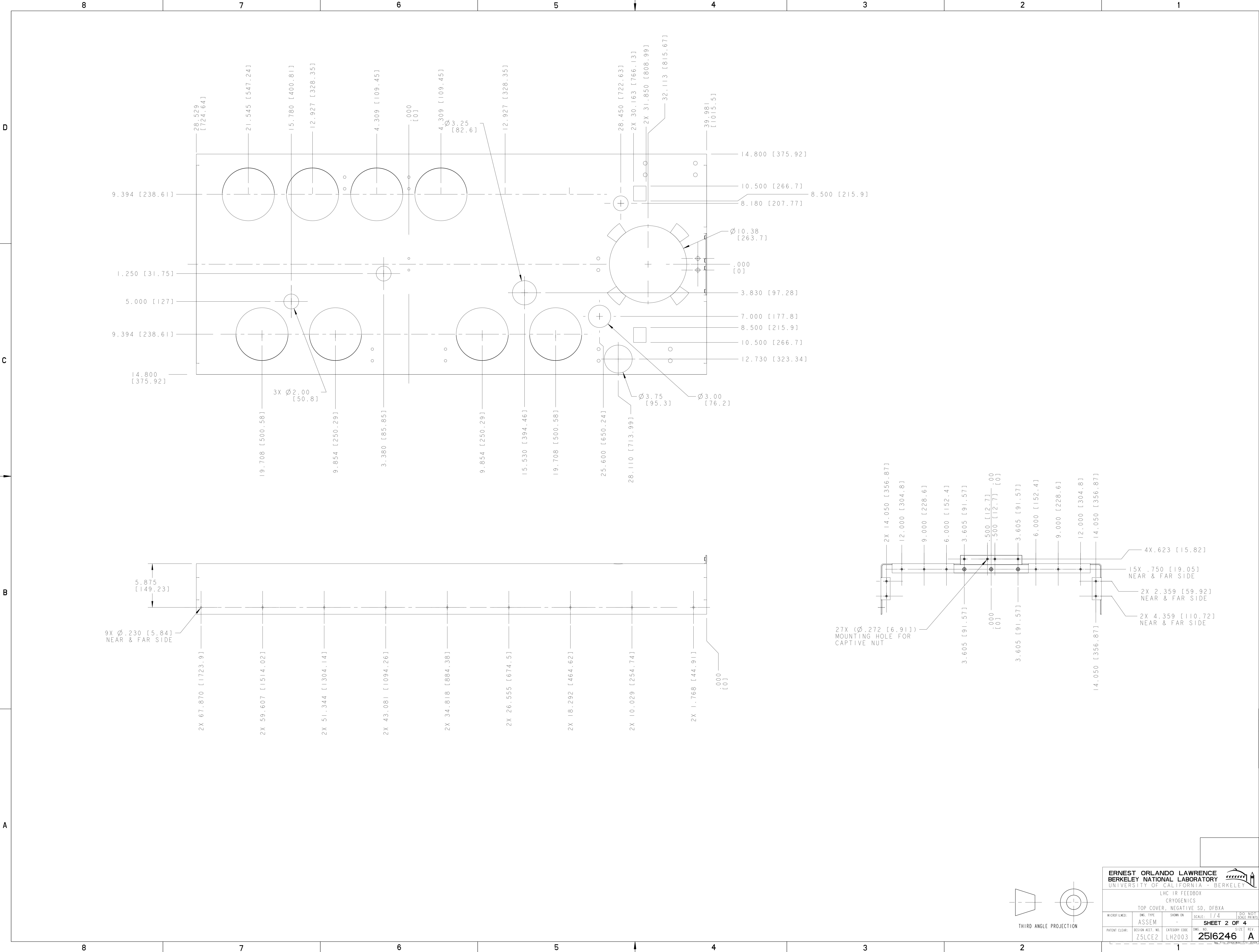


3	-	27	MS CAPTIVE NUT, PEM-AC-MS-1-SF	SS
2	-	1	SHEET, .125 THICK	COPPER, OFHC, C101
ITEM	PART NO	REQD	DESCRIPTION	MATERIAL
<p>UNLESS OTHERWISE SPECIFIED</p> <p>FINISHES: X.X ± 0.1 FRACTION ± 1/64</p> <p>DECIMALS: X.XX ± 0.03 ANGLES ± 1.0°</p> <p>ANGLES: X.XXX ± 0.010 FINISH: 125</p> <p>DO NOT SCALE PRINT</p> <p>CHANGES ARE CLASS 2</p> <p>CHAMFER ENDS OF ALL SCREW THREADS 30°</p> <p>CUT ROUNDS, 1.5 THREAD RELIEF ON MACHINED THREADS</p> <p>BREAK EDGES .125 MAX. ON MACHINED WORK</p> <p>REMOVE BURRS, WELD SPATTER & LOOSE SCALE</p> <p>IN ACCORDANCE WITH SEMI E14.3M & B46.1</p>				
A	ARH	DPO	8/19/92	INITIAL RELEASE
REV	DWG	CHK	ZONE	DATE
3				CHANGES
<p>SHOP ORDERS</p> <p>ERNEST ORLANDO LAWRENCE BERKELEY NATIONAL LABORATORY UNIVERSITY OF CALIFORNIA BERKELEY</p> <p>LHC IR FEEDBOX CRYOGENICS</p> <p>TOP COVER, NEGATIVE SD, DFBXA</p> <p>DWG. TYPE: ASSEM</p> <p>SCALE: 1/4</p> <p>SHEET 1 OF 4</p> <p>REV: Z5LCE2</p> <p>DATE: 18-Feb-92</p> <p>DATE: 18-AUG-92</p> <p>DATE: 13-AUG-92</p>				

2516246 A 1

2516246 A

NAME: ARHARRIS OBJECT: 2516246_1 DATE: 22-Nov-92 13:46:43



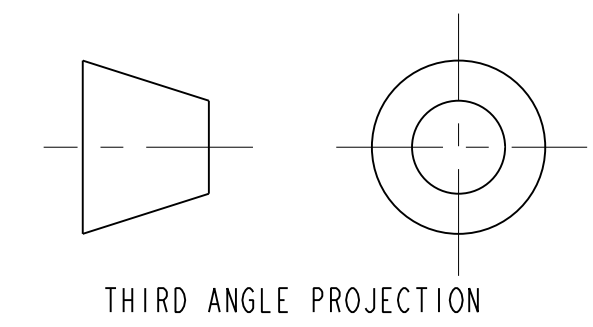
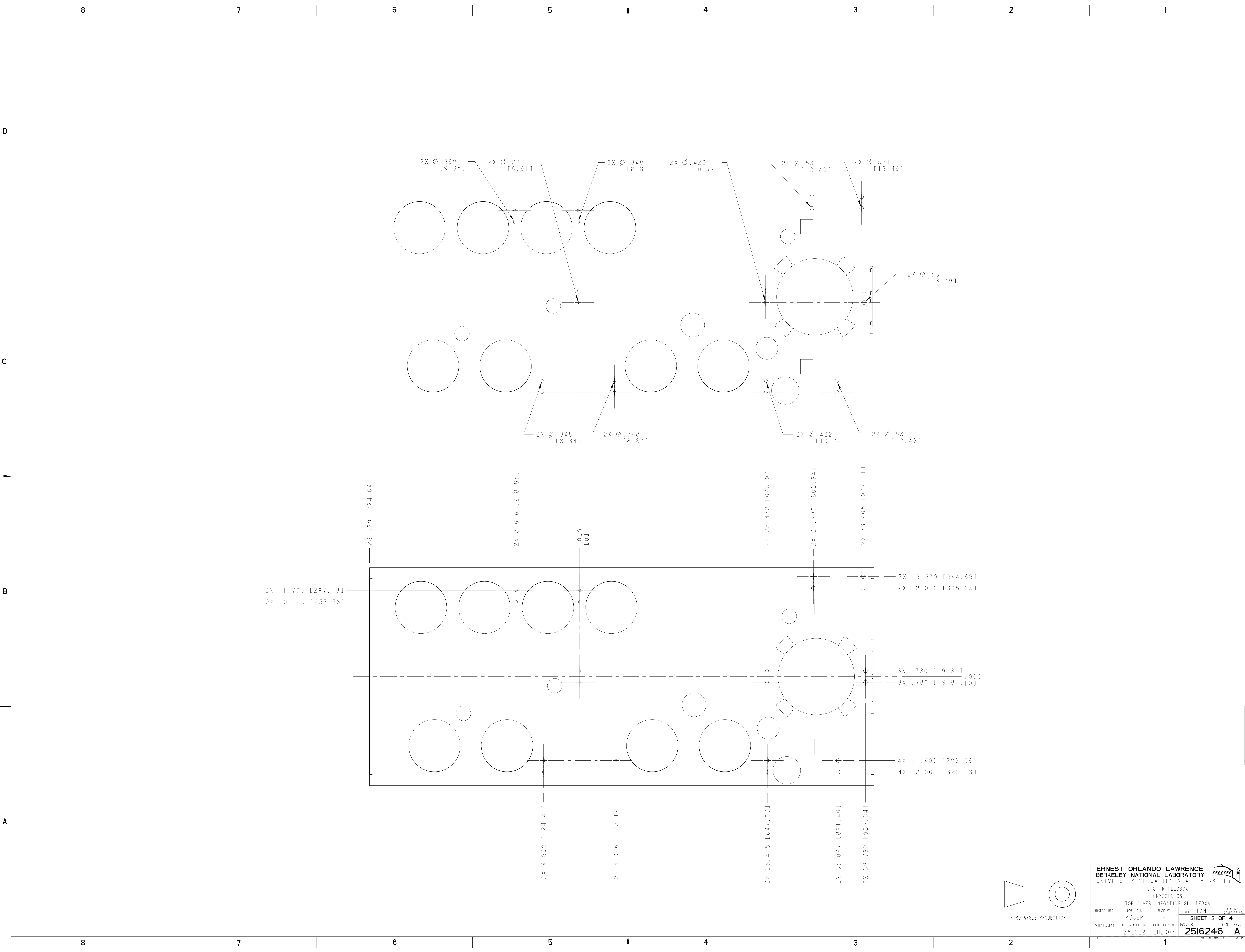
ERNEST ORLANDO LAWRENCE
BERKELEY NATIONAL LABORATORY
UNIVERSITY OF CALIFORNIA BERKELEY

LHC IR FEEDBOX
CRYGENICS
TOP COVER, NEGATIVE SD., DFBXA

MICROFILMED:	ENG. TYPE:	SHOW ON:	SCALE:	DO NOT CHECK PRINTS
	ASSEM		1/4	
PATENT CLEAR:	DESIGN ACCT. NO.:	CATEGORY CODE:	ENG. NO.:	REV.:
	Z5LCE2	LH2003	2516246	A

SHEET 2 OF 4

NAME: ARHARRIS OBJECT: 251624_3 DATE: 22-Nov-02 13:46:46



ERNEST ORLANDO LAWRENCE BERKELEY NATIONAL LABORATORY <small>UNIVERSITY OF CALIFORNIA BERKELEY</small>			
LHC IR FEEDBOX CRYOGENICS TOP COVER, NEGATIVE SD, DFBXA			
MICROFILMED:	DWG. TYPE:	SHOW ON:	SCALE:
	ASSEM		1/4
PATENT CLEAR:		REVISION NO.:	CATEGORY CODE:
		Z5LCE2	LH2003
		DWG. NO.:	SIZE:
		2516246	A
		SHEET 3 OF 4 <small>DO NOT SCALE PRINTS</small>	

2516246 A 3

8

7

6

5

4

3

2

1

D

C

B

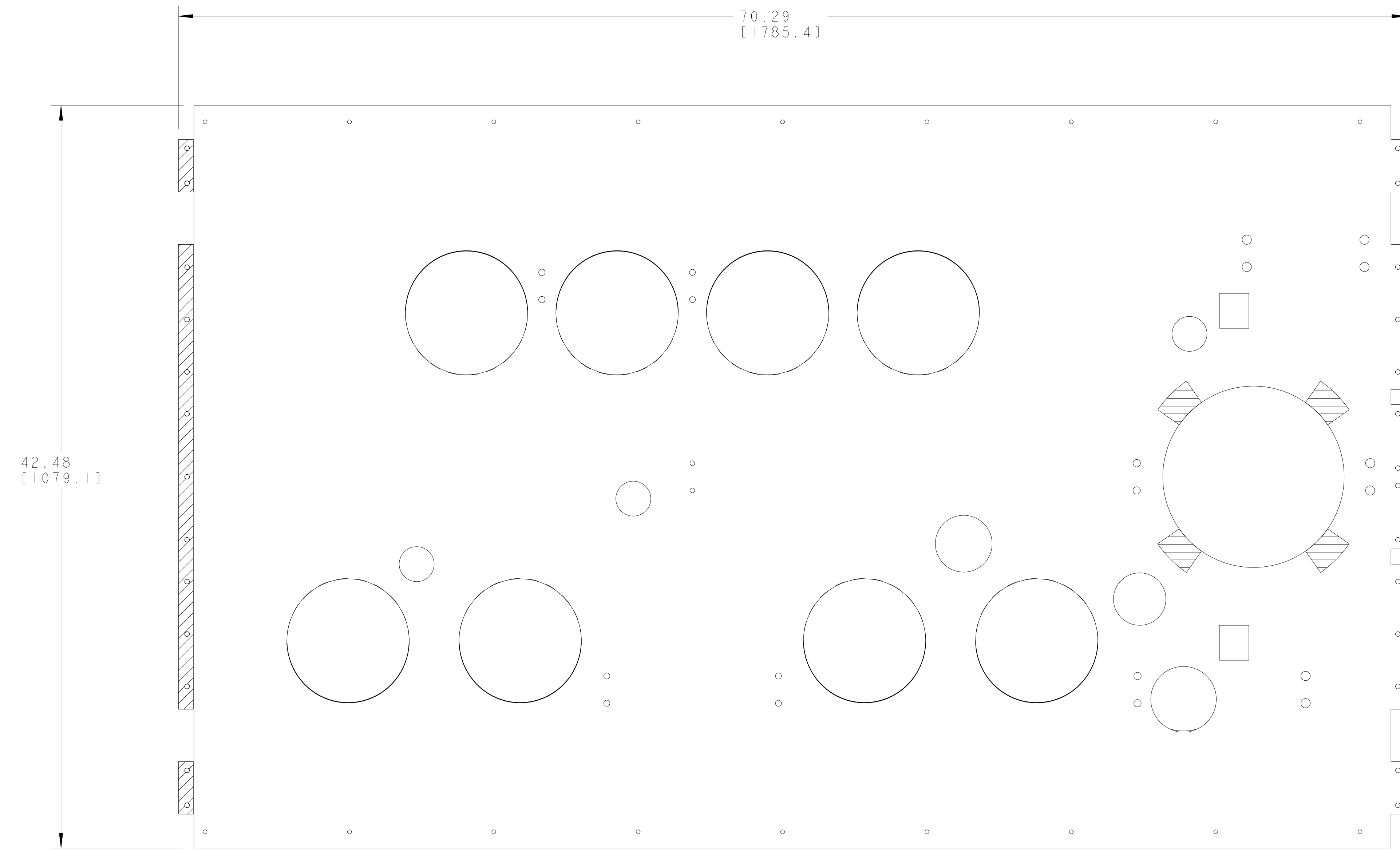
A

D

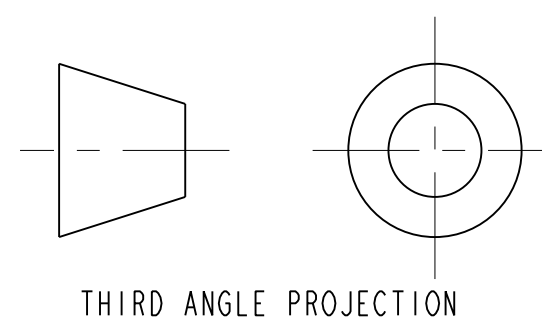
C

B

A



**FLAT PATTERN
SCALE 1/4**



THIRD ANGLE PROJECTION

ERNEST ORLANDO LAWRENCE BERKELEY NATIONAL LABORATORY <small>UNIVERSITY OF CALIFORNIA BERKELEY</small>			
LHC IR FEEDBOX CRYOGENICS			
TOP COVER, NEGATIVE SD., DFBXA			
MICROFILMED:	DWG. TYPE	SHOW ON	SCALE
	ASSEM		1/4
PATENT CLEAR:		REVISION NO.:	CATEGORY CODE
		Z5LCE2	LH2003
		DWG. NO.:	SIZE
		2516246	A

2516246 A 4

NAME: ARHARRIS OBJECT: 251624_4 DATE: 22-Nov-02 13:46:47