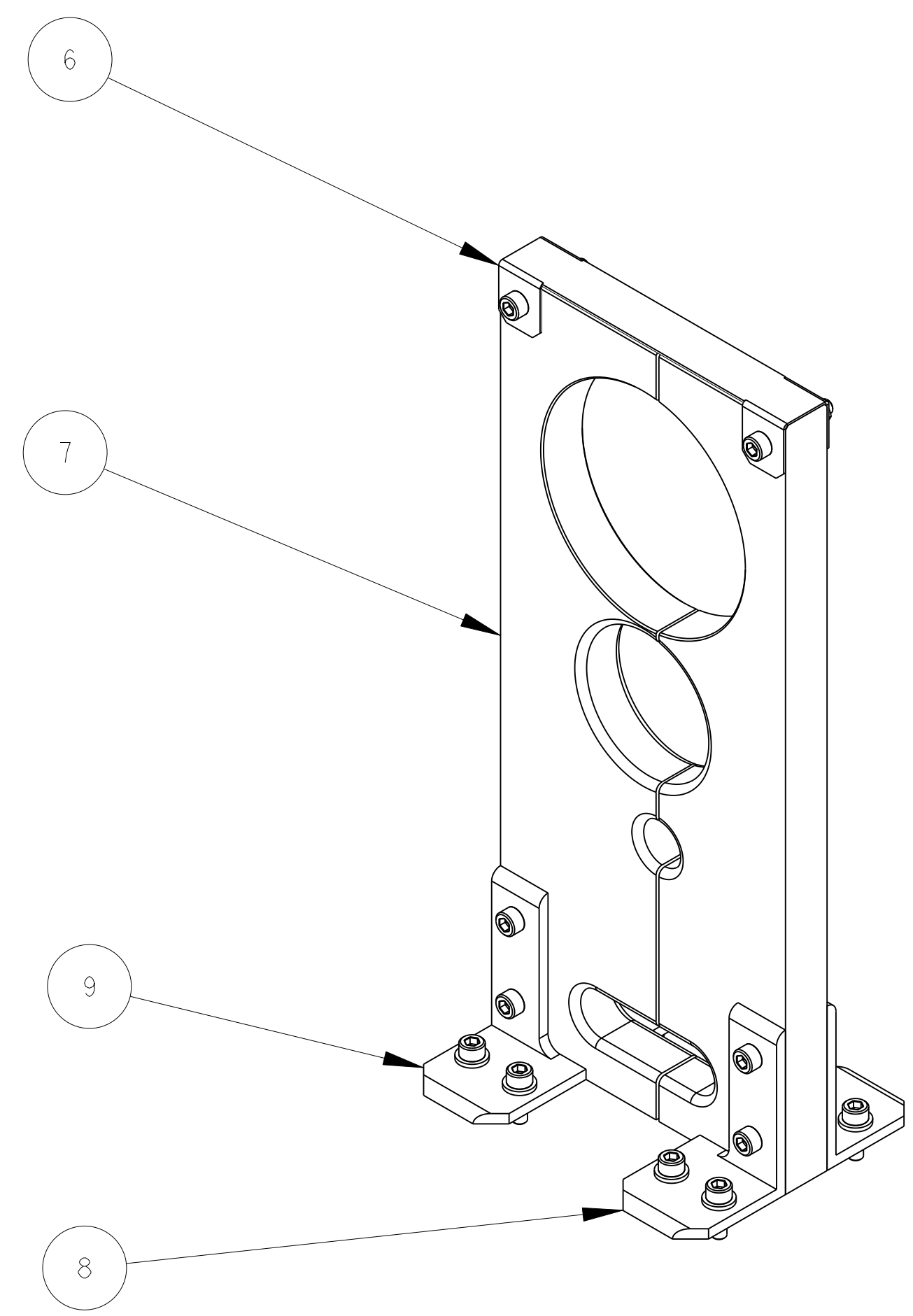
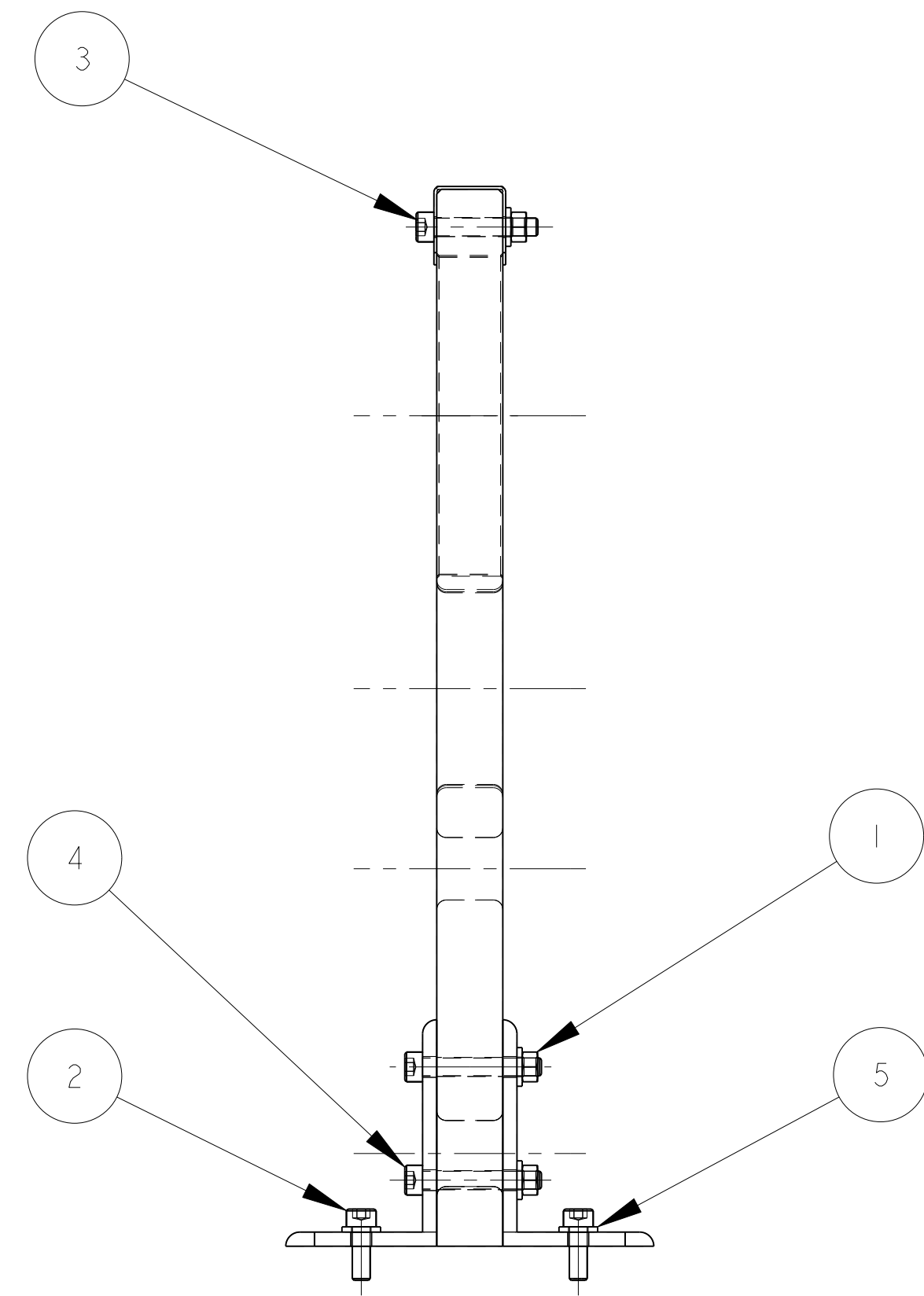
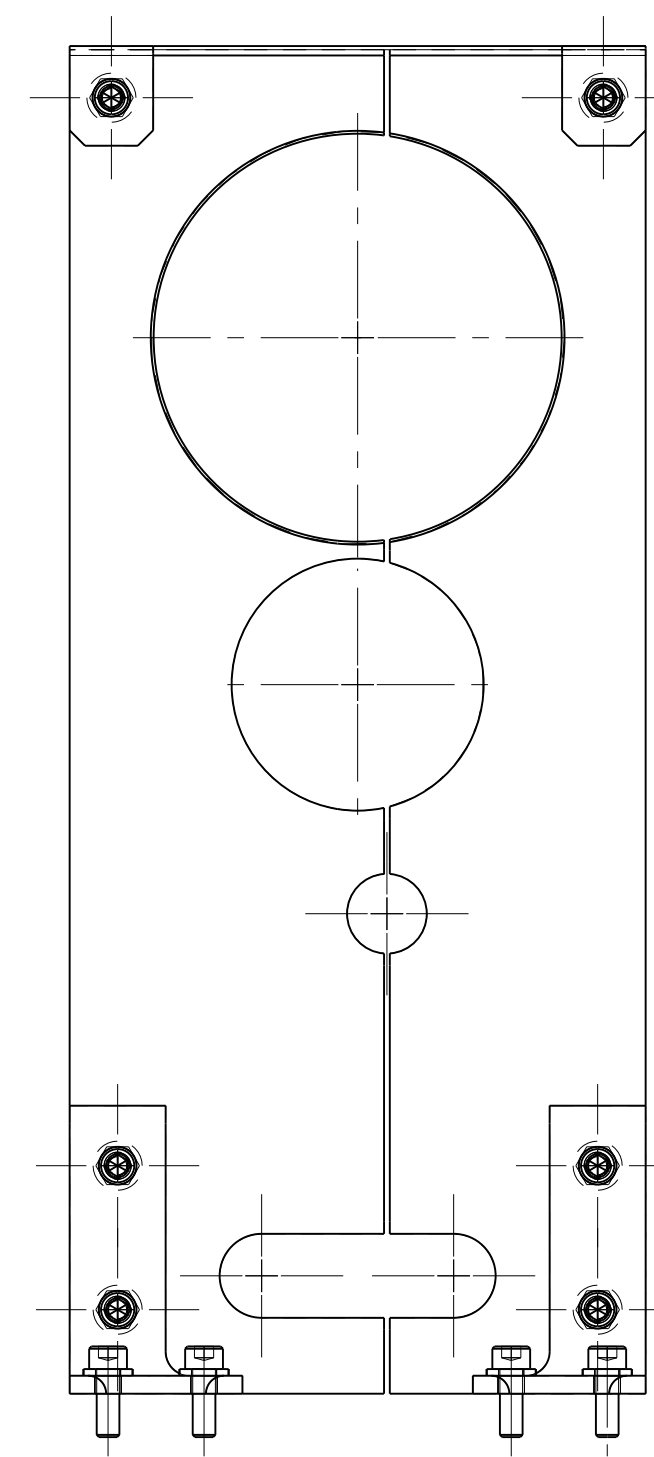


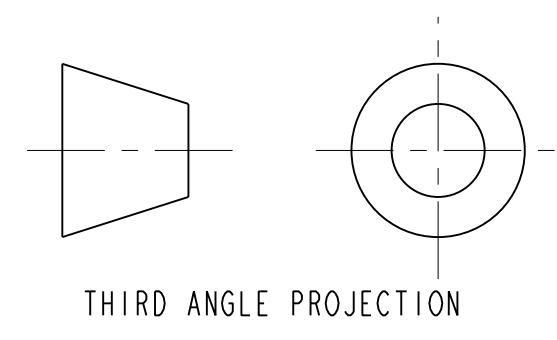
ITEM	PART NO	RECD	DESCRIPTION	MATERIAL
9	25M933	2	SUPPORT BRACKET	SS
8	25M932	2	SUPPORT BRACKET	SS
7	251612	1	CENTER PIPE SUPPORT	NEMA G-10
6	251597	1	TOP BRACKET PIPE SUPPORT	SS
5	-	14	WASHER, M6	SS 18-8
4	-	4	SCH, M6X1, 40LG, SILVER PLATED	SS 18-8
3	-	2	SCH, M6X1, 35LG, SILVER PLATED	SS 18-8
2	-	8	SCH, M6X1, 18LG., VENTED, SILVER PLATED	SS 18-8
1	-	6	NUT, M6	SS 18-8



SCALE 1/2

NOTES: (UNLESS OTHERWISE SPECIFIED)

- THIS IS A CRYOGENIC VACUUM COMPONENT.
- CLEANING PROCEDURE : PER VENDOR SPECIFICATION WITH LBNL APPROVAL.
- PACKAGING AND STORAGE PROCEDURE OF THE COMPONENTS: PER VENDOR SPECIFICATION WITH LBNL APPROVAL.
- DIMENSIONS AND TOLERANCING PER ANSI Y14.5M-1982. UNITS ARE IN INCHES UNLESS OTHERWISE SPECIFIED.
- USE OF SULFUR OR SILICONE BEARING OILS, LUBRICANTS, OR COOLANTS ARE STRICTLY PROHIBITED.
- USE OF RESIN OR RUBBER BONDED ABRASIVES UNDER POWER IS STRICTLY PROHIBITED. USE VITREOUS BONDED ABRASIVES ONLY.



<p>UNLESS OTHERWISE SPECIFIED</p> <p>TOLERANCES                  X.X ± 0.1    FRAC. ± 1/64                  X.XX ± 0.03    Angles ± 1.00°                  X.XXX ± 0.010    FINISH 125<sub>μm</sub></p> <p>DO NOT SCALE PRINT</p> <p>THREADS ARE CLASS 2</p> <p>CHAMFER ENDS OF ALL SCREW TREADS 30°</p> <p>CUT ROUND, 1.5 THREAD RELIEF ON MACHINED THREADS</p> <p>BREAK EDGES .016 MAX. ON MACHINED WORK</p> <p>REMOVE BURRS, WELD SPLATTER &amp; LOOSE SCALE</p> <p>IN ACCORDANCE WITH ASME Y14.5M &amp; B46.1</p>		<p>SHOP ORDERS</p> <p>ACCT NO.    NO.    SER. NO.    DATE</p> <p>DEL.    RECD.    ISSD.    DATE</p> <p>SURFACE TREATMENT</p> <p>IDENT. METHOD TAG</p> <p>PROJECT NUMBER N/A</p> <p>PROJECT NAME N/A</p> <p>DWG. BY R LA MANTIA    DATE 13-Nov-02</p> <p>CHK S VIROSTEK    DATE 18-Nov-02</p> <p>APP BY D OSHATZ    DATE 18-Nov-02</p>	<p>ERNEST ORLANDO LAWRENCE                  BERKELEY NATIONAL LABORATORY                  UNIVERSITY OF CALIFORNIA - BERKELEY</p> <p>LHC IR FEEDBOX                  CRYOGENICS                  SUPPORT, CENTER PIPE, DFBXF</p> <p>MICROFILMED:    DWG. TYPE ASSEM    SHOWN ON 251874    SCALE: 1/2    DO NOT SCALE PRINTS</p> <p>PATENT CLEAR:    DESIGN ACCT. NO. Z5LC3    CATEGORY CODE LH2003    DWG. NO. 2516234    SIZE A    REV.</p>
<p>REV DWG CHK ZONE DATE</p> <p>A RLM SPV 11-18-02</p>	<p>INITIAL RELEASE</p> <p>CHANGES</p>	<p>SHEET 1 OF 1</p> <p>2516234 A</p>	