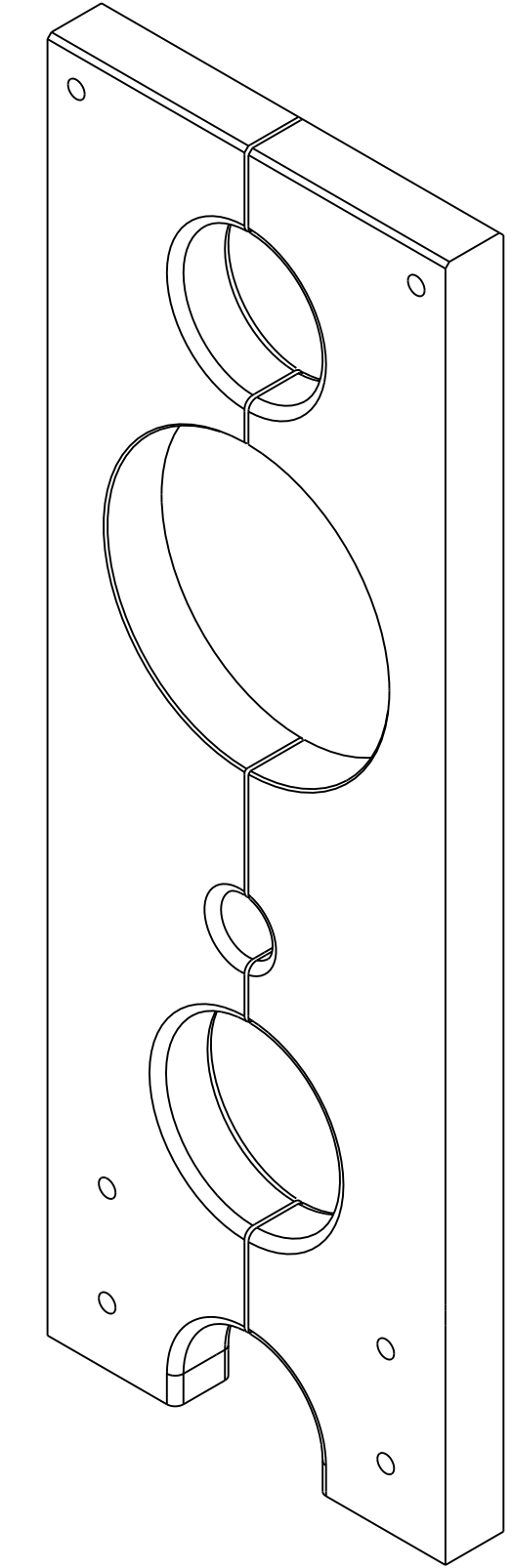
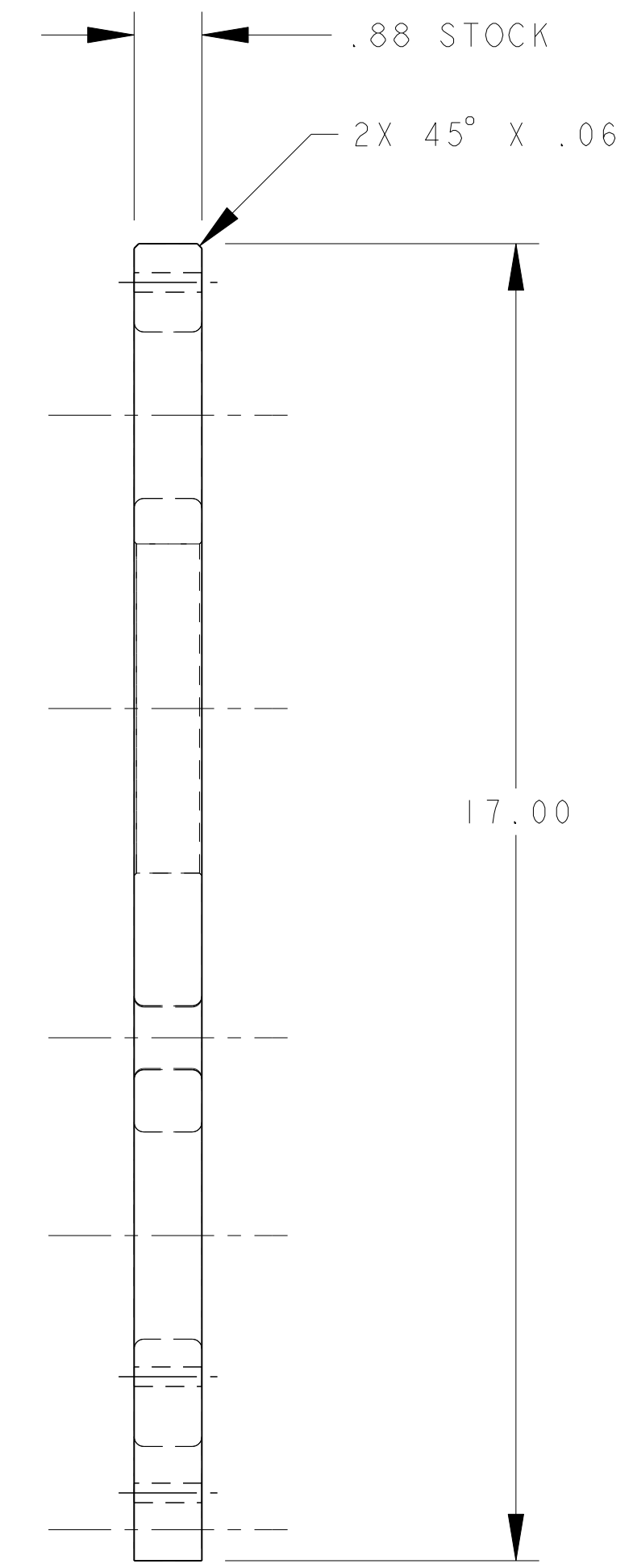
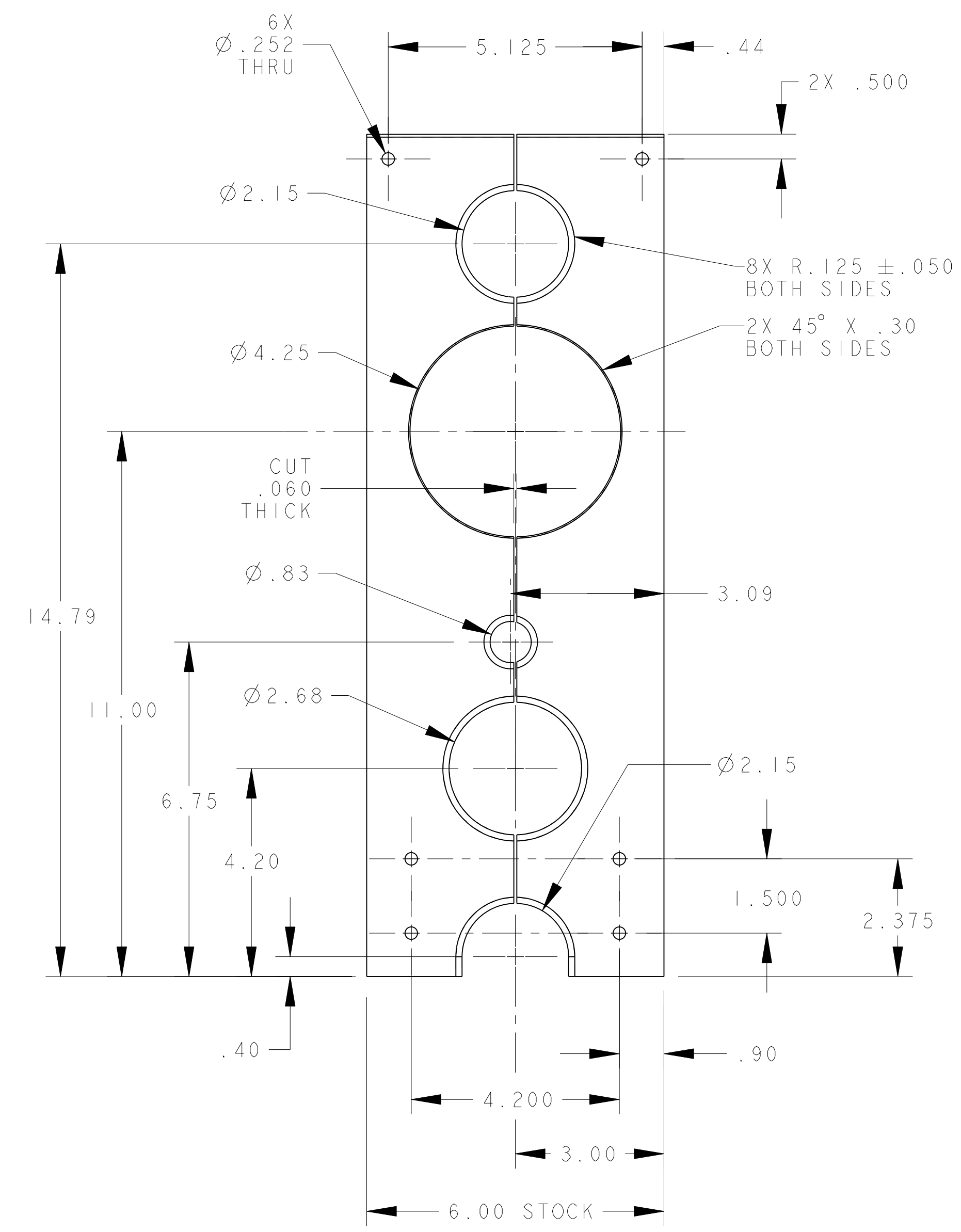
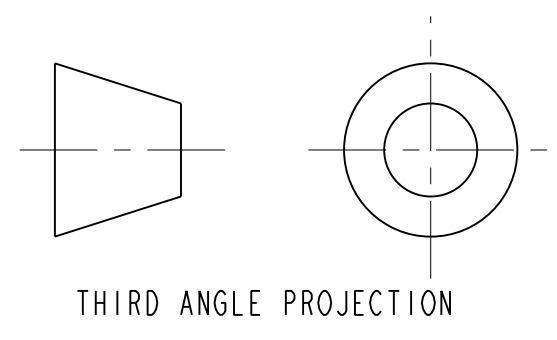


DWG. NO. 2516114	SIZE A	REV. SH. 1	
DESCRIPTION PLATE		MATERIAL NEMA G-10	MAT. LOCATION -



NOTES: (UNLESS OTHERWISE SPECIFIED)

1. THIS IS A CRYOGENIC VACUUM COMPONENT.
2. CLEANING PROCEDURE : PER VENDOR SPECIFICATION WITH LBNL APPROVAL.
3. PACKAGING AND STORAGE PROCEDURE OF THE COMPONENTS: PER VENDOR SPECIFICATION WITH LBNL APPROVAL.
4. DIMENSIONS AND TOLERANCING PER ANSI Y14.5M-1982. UNITS ARE IN INCHES UNLESS OTHERWISE SPECIFIED.
5. USE OF SULFUR OR SILICONE BEARING OILS, LUBRICANTS, OR COOLANTS ARE STRICTLY PROHIBITED.
6. USE OF RESIN OR RUBBER BONDED ABRASIVES UNDER POWER IS STRICTLY PROHIBITED. USE VITREOUS BONDED ABRASIVES ONLY.



TOLERANCES		UNLESS OTHERWISE SPECIFIED		SHOP ORDERS		SER. NO. -		ERNEST ORLANDO LAWRENCE		
X.X ± 0.1	FRAC. ± 1/64	ACCT. NO.	NO. REQD.	NO.	NO.	DATE ISSD.	DATE RECD.	BERKELEY NATIONAL LABORATORY		
X.XX ± 0.02	Angles ± 1.00°	DEL. TO						UNIVERSITY OF CALIFORNIA - BERKELEY		
X.XXX ± 0.005	FINISH 125 \sqrt{Ra}	SURFACE TREATMT		IDENT. METHOD		TAG		LHC IR FEEDBOX		
DO NOT SCALE PRINT		THREADS ARE CLASS 2		PROJECT NUMBER		PROJECT NAME		CRYOGENICS		
CHAMFER ENDS OF ALL SCREW TREADS 30°		CUT ROUND, 1.5 THREAD RELIEF ON MACHINED THREADS		BY R LA MANTIA		DATE 13-Nov-02		MICROFILMED: PART 251610		
BREAK EDGES .016 MAX. ON MACHINED WORK		REMOVE BURRS, WELD SPLATTER & LOOSE SCALE		CHK S VIROSTEK		DATE 18-Nov-02		SCALE: 1/2		
IN ACCORDANCE WITH ASME Y14.5M & B46.1		APPR BY D OSHATZ		DATE 18-Nov-02		PATENT CLEAR: Z5LCE3		CATEGORY CODE: LH2003		
REV	DWG	CHK	ZONE	DATE	INITIAL RELEASE		CHANGES		SHEET 1 OF 1	
A	RLM	SPV		11-18-02					DWG. NO. 2516114	
									REV. A	