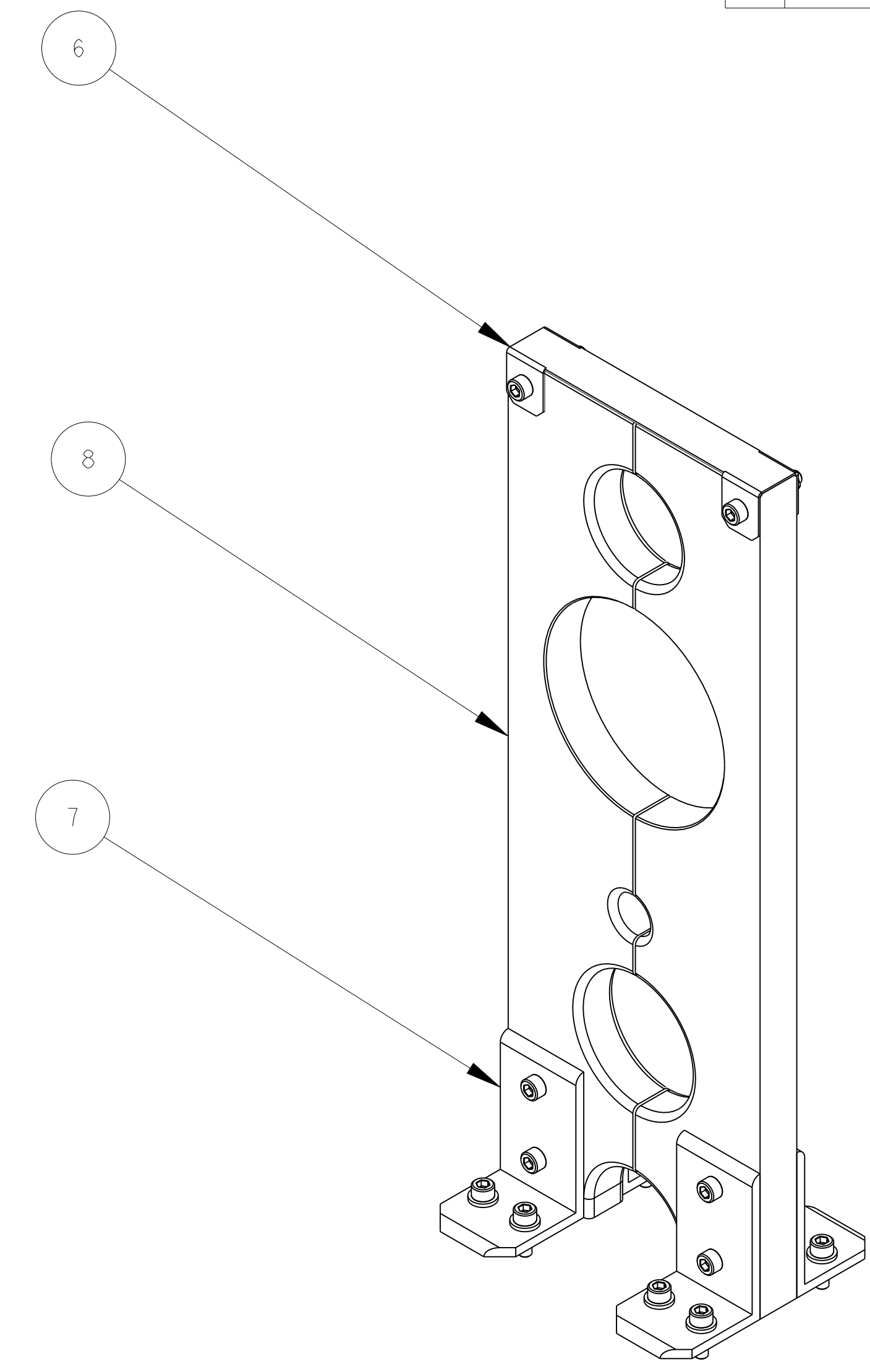
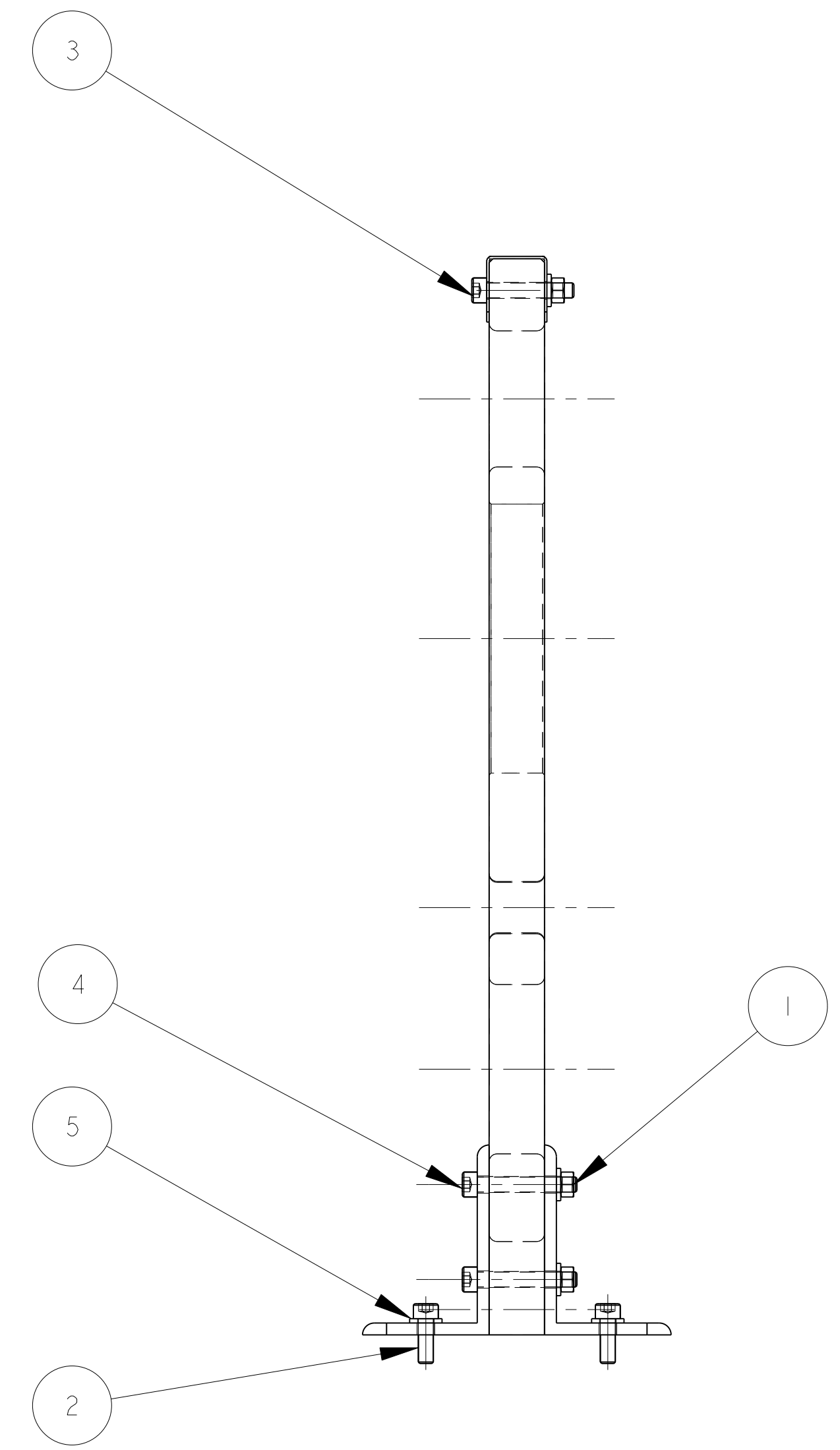
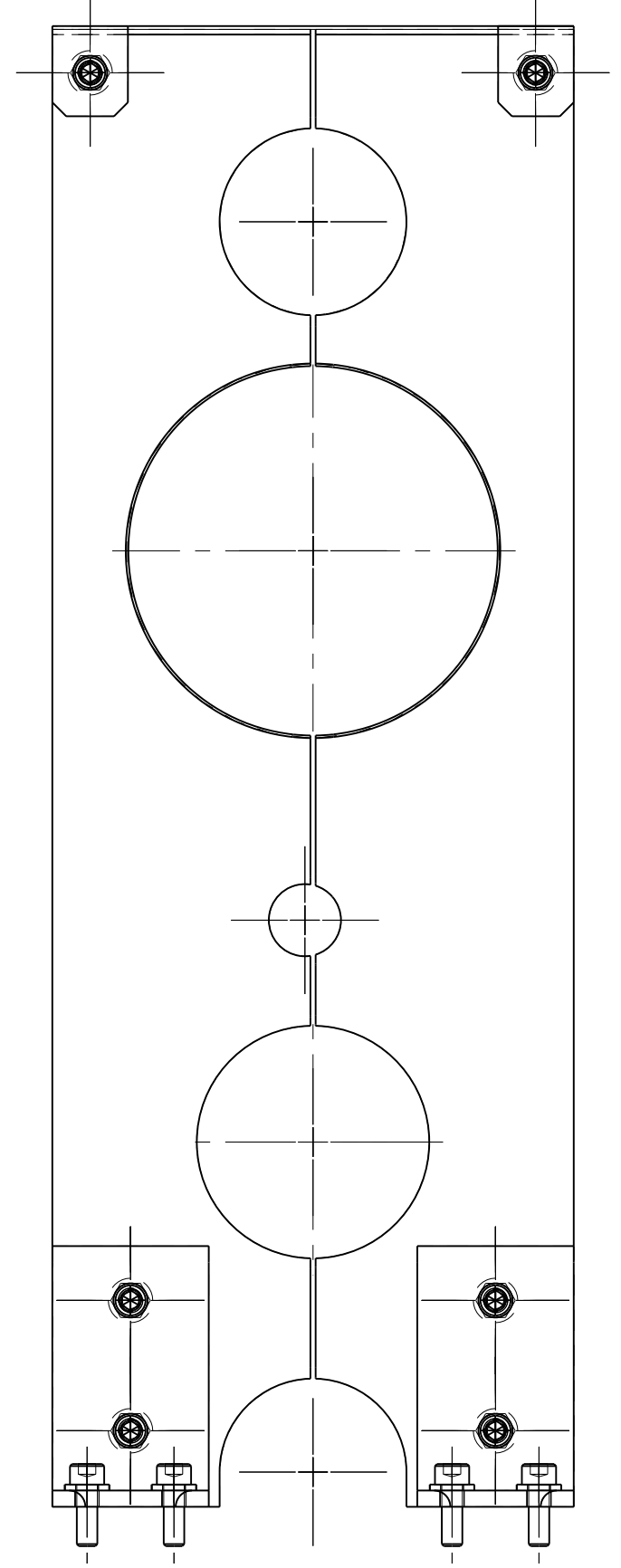


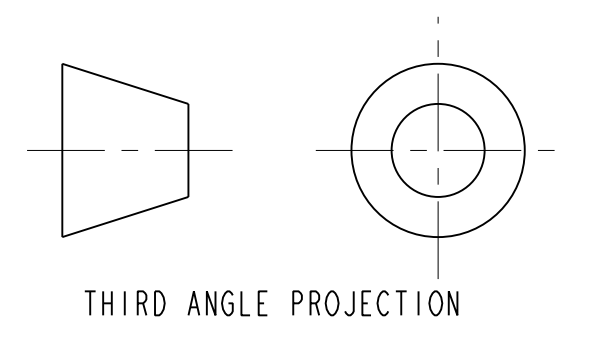
| ITEM | PART NO. | QTY | DESCRIPTION                             | MATERIAL  |
|------|----------|-----|---|-----------|
| 8    | 251611   | 1   | CENTER PIPE SUPPORT                     | NEMA G-10 |
| 7    | 251598   | 4   | SUPPORT BRACKET                         | SS        |
| 6    | 251597   | 1   | TOP BRACKET PIPE SUPPORT                | SS        |
| 5    | -        | 14  | WASHER, M6                              | SS 18-8   |
| 4    | -        | 4   | SCH, M6X1, 40LG, SILVER PLATED          | SS 18-8   |
| 3    | -        | 2   | SCH, M6X1, 35LG, SILVER PLATED          | SS 18-8   |
| 2    | -        | 8   | SCH, M6X1, 18LG., VENTED, SILVER PLATED | SS 18-8   |
| 1    | -        | 6   | NUT, M6                                 | SS 18-8   |



SCALE 1/2

NOTES: (UNLESS OTHERWISE SPECIFIED)

- THIS IS A CRYOGENIC VACUUM COMPONENT.
- CLEANING PROCEDURE : PER VENDOR SPECIFICATION WITH LBNL APPROVAL.
- PACKAGING AND STORAGE PROCEDURE OF THE COMPONENTS: PER VENDOR SPECIFICATION WITH LBNL APPROVAL.
- DIMENSIONS AND TOLERANCING PER ANSI Y14.5M-1982. UNITS ARE IN INCHES UNLESS OTHERWISE SPECIFIED.
- USE OF SULFUR OR SILICONE BEARING OILS, LUBRICANTS, OR COOLANTS ARE STRICTLY PROHIBITED.
- USE OF RESIN OR RUBBER BONDED ABRASIVES UNDER POWER IS STRICTLY PROHIBITED. USE VITREOUS BONDED ABRASIVES ONLY.



|   |  |   |  |   |  |  |  |
|---|--|---|--|---|--|--|--|
| TOLERANCES<br>X.X ± 0.1    FRAC. ± 1/64<br>X.XX ± 0.03    Angles ± 1.00°<br>X.XXX ± 0.010    FINISH 125 $\sqrt{\mu\text{m}}$  |  | SHOP ORDERS<br>ACCT. NO. _____ NO. _____<br>DEL. DATE ISSD _____<br>DATE RECD _____   |  | SER. NO. _____<br>DATE ISSD _____<br>DATE RECD _____  |  | ERNEST ORLANDO LAWRENCE<br>BERKELEY NATIONAL LABORATORY<br>UNIVERSITY OF CALIFORNIA - BERKELEY |  |
| DO NOT SCALE PRINT<br>THREADS ARE CLASS 2<br>CHAMFER ENDS OF ALL SCREW THREADS 30°<br>CUT ROUND, 1.5 THREAD RELIEF ON MACHINED THREADS<br>BREAK EDGES .016 MAX. ON MACHINED WORK<br>REMOVE BURRS, WELD SPLATTER & LOOSE SCALE<br>IN ACCORDANCE WITH ASME Y14.5M & B46.1 |  | SURFACE TREATMT _____<br>IDENT. METHOD TAG _____<br>PROJECT NUMBER N/A<br>PROJECT NAME N/A                                    |  | MICROFILMED: _____<br>DWG. TYPE ASSEM<br>SHOWN ON 251235<br>SCALE: 1/2<br>DO NOT SCALE PRINTS |  | LHC IR FEEDBOX<br>CRYOGENICS<br>SUPPORT, CENTER PIPE, DFBXD & H                                |  |
| REV. DWG. CHK. ZONE. DATE. INITIAL RELEASE CHANGES  |  | DWG. BY: R. LA MANTIA    DATE: 12-Nov-02<br>CHK. BY: S. VIROSTEK    DATE: 18-Nov-02<br>APPR. BY: D. OSHATZ    DATE: 18-Nov-02 |  | PATENT CLEAR: _____<br>DESIGN ACCT. NO. Z5LCE3<br>CATEGORY CODE LH2003                        |  | SHEET 1 OF 1<br>DWG. NO. 2516104<br>SIZE A   |  |