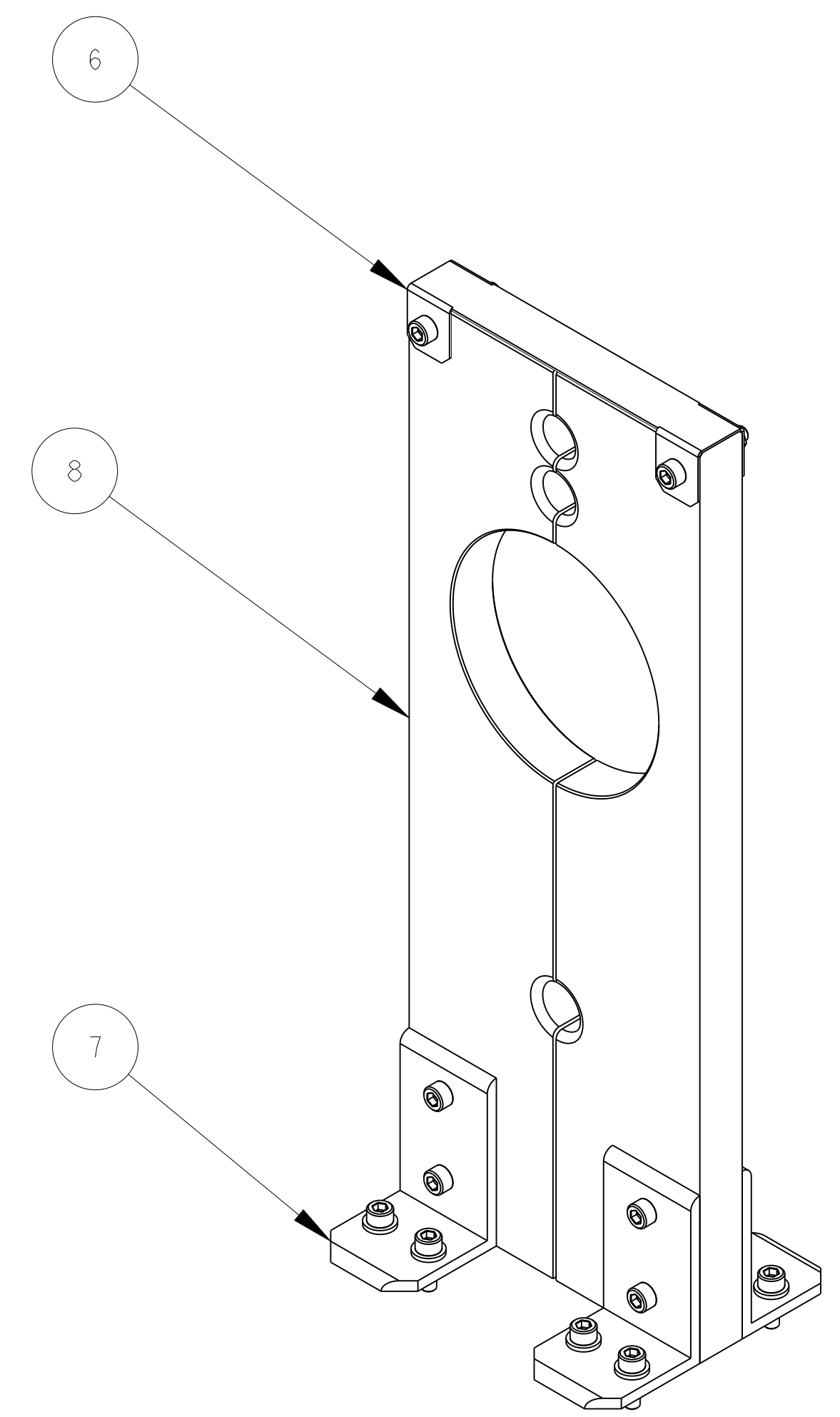
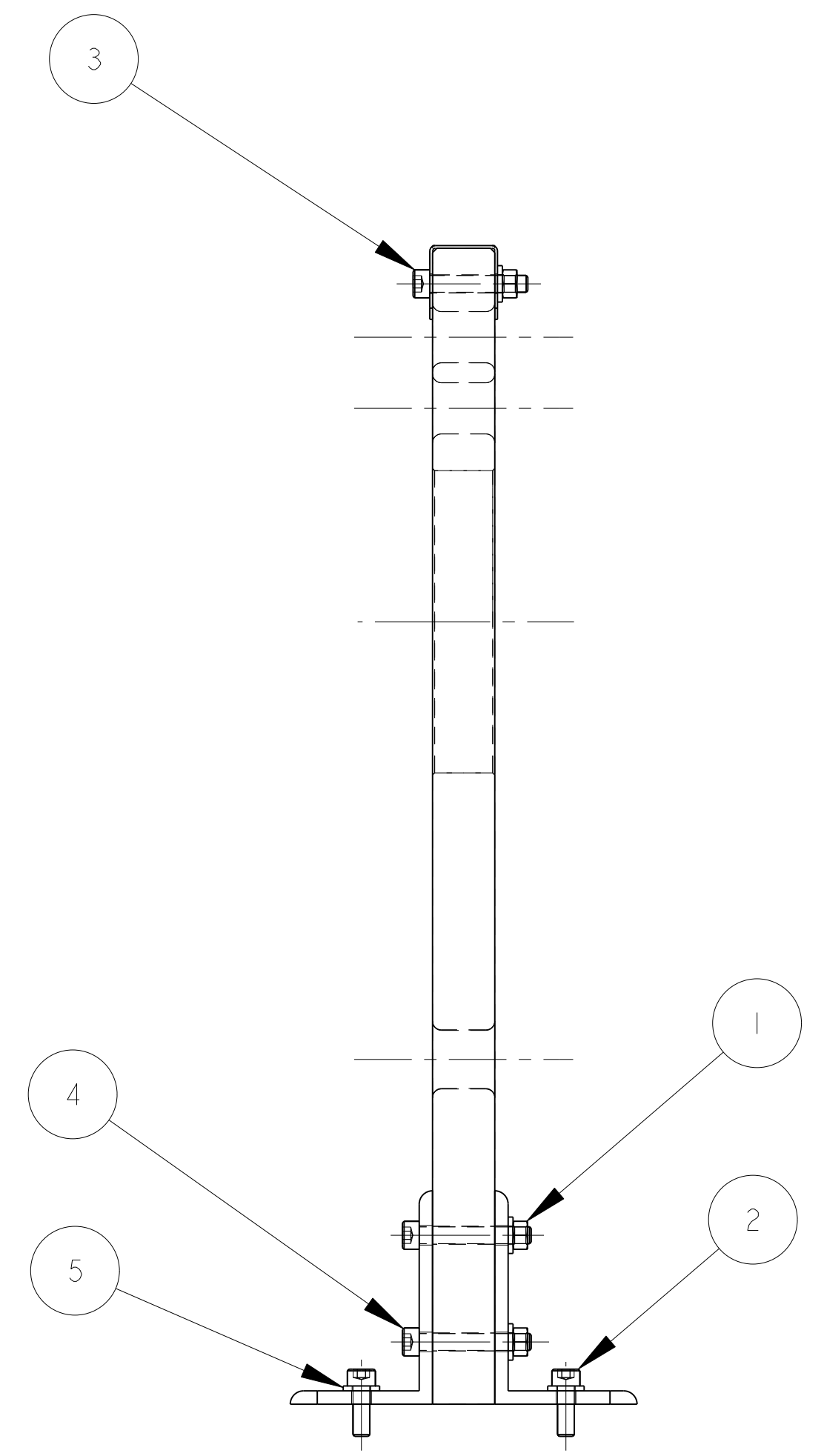
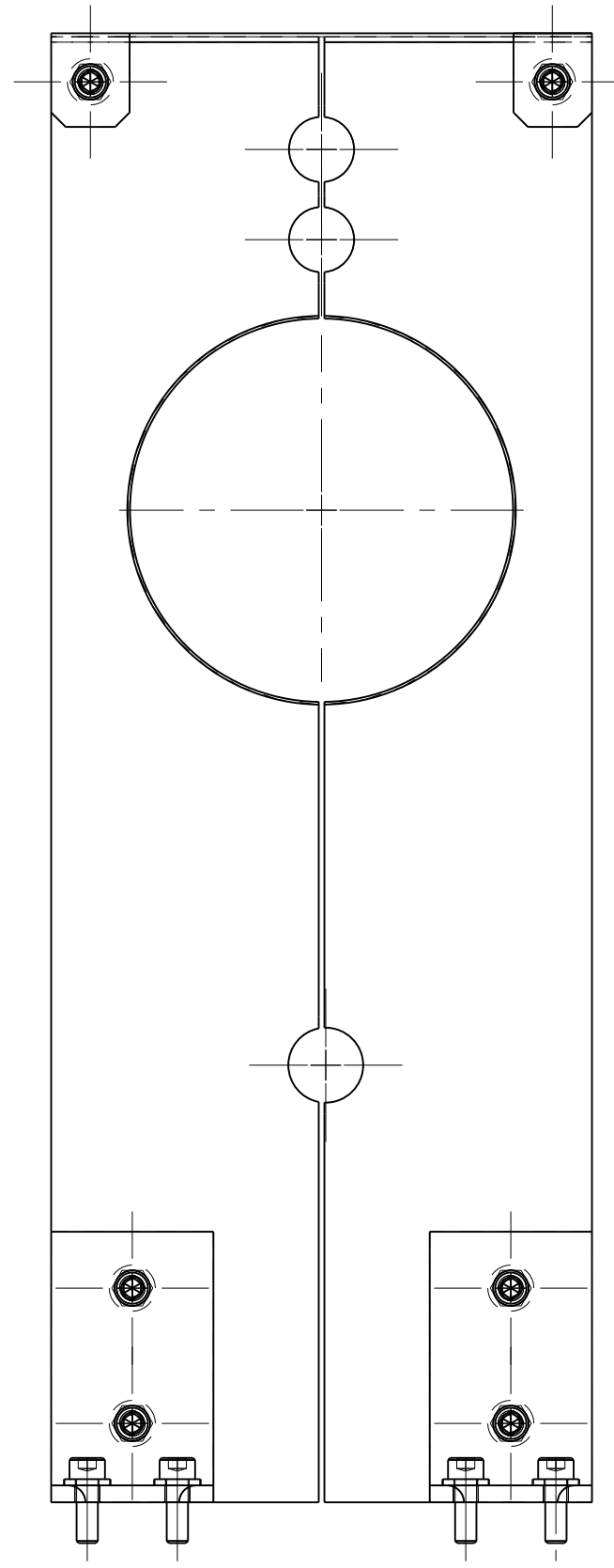


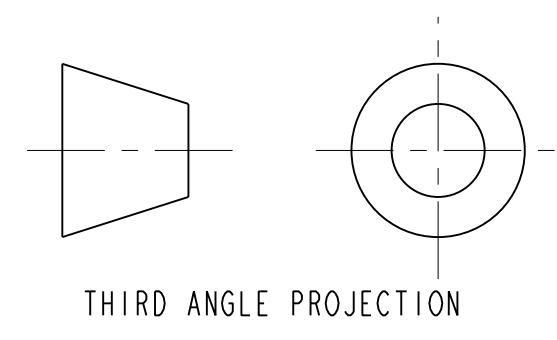
ITEM	PART NO	REQD	DESCRIPTION	MATERIAL
8	251608	1	CENTER PIPE SUPPORT	NEMA G-10
7	251598	4	SUPPORT BRACKET	SS
6	251597	1	TOP BRACKET PIPE SUPPORT	SS
5	-	14	WASHER, M6	SS 18-8
4	-	4	SCH, M6X1, 40LG, SILVER PLATED	SS 18-8
3	-	2	SCH, M6X1, 35LG, SILVER PLATED	SS 18-8
2	-	8	SCH, M6X1, 18LG., VENTED, SILVER PLATED	SS 18-8
1	-	6	NUT, M6	SS 18-8



SCALE 1/2

NOTES: (UNLESS OTHERWISE SPECIFIED)

- THIS IS A CRYOGENIC VACUUM COMPONENT.
- CLEANING PROCEDURE : PER VENDOR SPECIFICATION WITH LBNL APPROVAL.
- PACKAGING AND STORAGE PROCEDURE OF THE COMPONENTS: PER VENDOR SPECIFICATION WITH LBNL APPROVAL.
- DIMENSIONS AND TOLERANCING PER ANSI Y14.5M-1982. UNITS ARE IN INCHES UNLESS OTHERWISE SPECIFIED.
- USE OF SULFUR OR SILICONE BEARING OILS, LUBRICANTS, OR COOLANTS ARE STRICTLY PROHIBITED.
- USE OF RESIN OR RUBBER BONDED ABRASIVES UNDER POWER IS STRICTLY PROHIBITED. USE VITREOUS BONDED ABRASIVES ONLY.



<p>UNLESS OTHERWISE SPECIFIED</p> <p>TOLERANCES: X.X ± 0.1, X.XX ± 0.03, X.XXX ± 0.010</p> <p>FRAC. ± 1/64, Angles ± 1.00°</p> <p>FINISH: 125 <math>\sqrt{Ra}</math></p> <p>DO NOT SCALE PRINT</p> <p>THREADS ARE CLASS 2</p> <p>CHAMFER ENDS OF ALL SCREW THREADS 30°</p> <p>CUT ROUND, 1.5 THREAD RELIEF ON MACHINED THREADS</p> <p>BREAK EDGES .016 MAX. ON MACHINED WORK</p> <p>REMOVE BURRS, WELD SPLATTER &amp; LOOSE SCALE</p> <p>IN ACCORDANCE WITH ASME Y14.5M &amp; B46.1</p>		<p>SHOP ORDERS</p> <p>ACCT. NO. _____ NO. _____</p> <p>DEL. TO _____ DATE ISSD _____</p> <p>DATE RECD _____</p> <p>SURFACE TREATMT _____</p> <p>IDENT. METHOD TAG _____</p> <p>PROJECT NUMBER N/A</p> <p>PROJECT NAME N/A</p> <p>DWG. BY R LA MANTIA DATE 13-Nov-02</p> <p>CHK S VIROSTEK DATE 18-Nov-02</p> <p>APP D OSHATZ DATE 18-Nov-02</p>	<p>ERNEST ORLANDO LAWRENCE BERKELEY NATIONAL LABORATORY UNIVERSITY OF CALIFORNIA - BERKELEY</p> <p>LHC IR FEEDBOX CRYOGENICS SUPPORT, CENTER PIPE, DFBXE</p> <p>MICROFILMED: _____ DWG. TYPE ASSEM SHOWN ON 251873 SCALE: 1/2 DO NOT SCALE PRINTS</p> <p>PATENT CLEAR: _____ DESIGN ACCT. NO. Z5LCE3 CATEGORY CODE LH2003</p> <p>DWG. NO. 2516074 SIZE A REV. 1</p>
<p>REV A</p> <p>DWG RLM</p> <p>CHK SPV</p> <p>ZONE</p> <p>DATE 11-18-02</p> <p>INITIAL RELEASE</p> <p>CHANGES</p>			