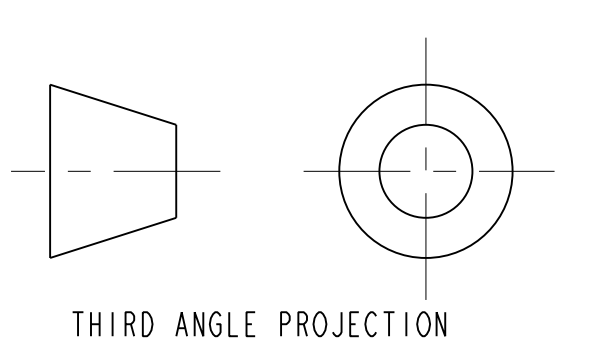
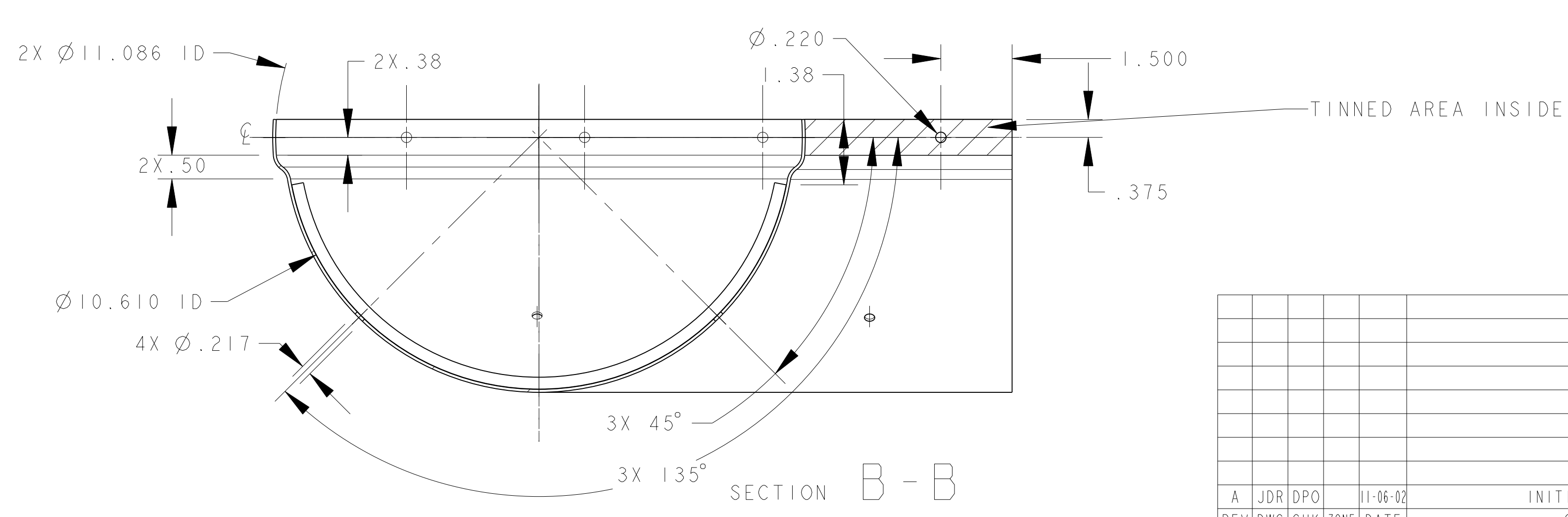
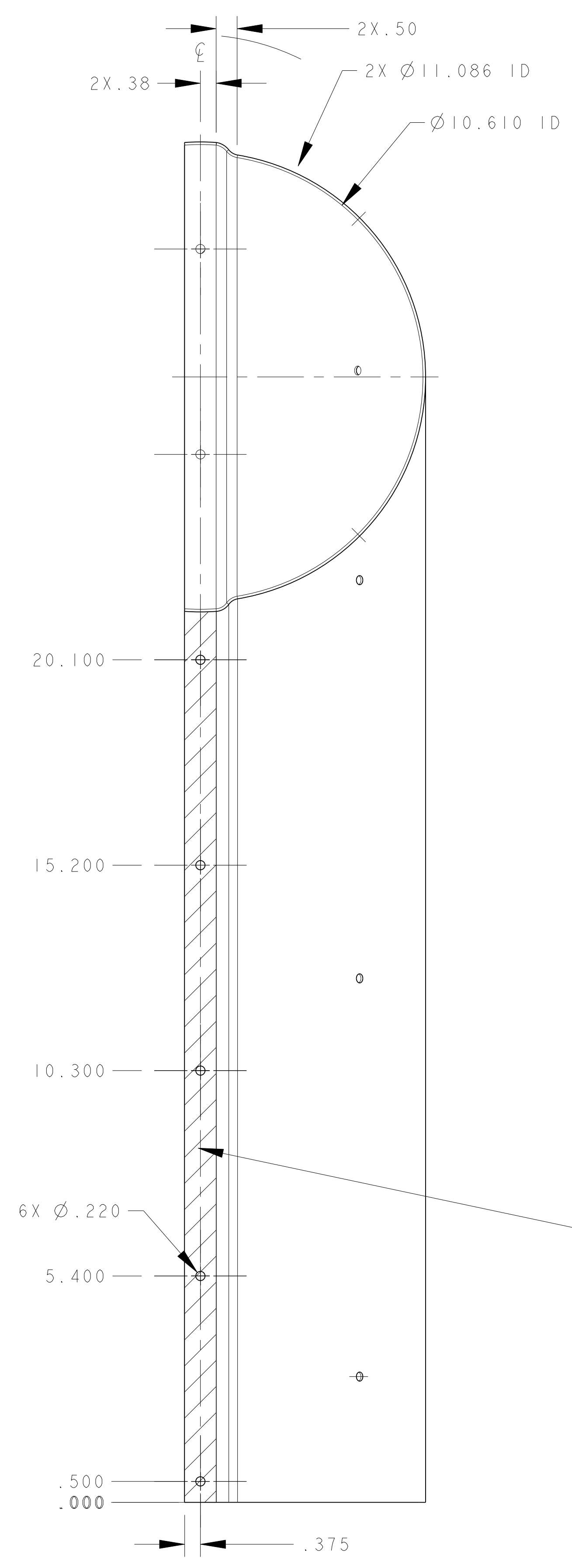
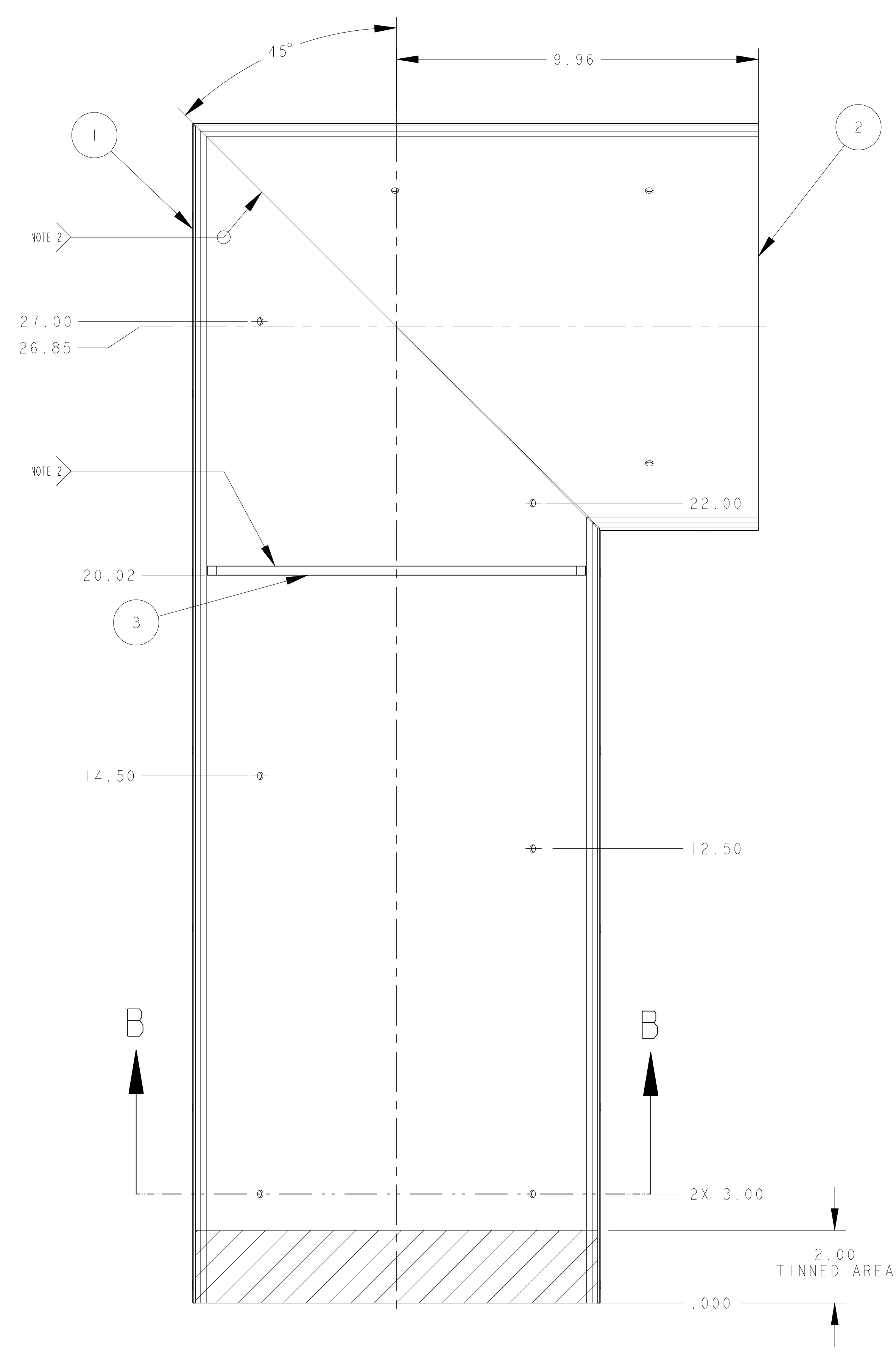
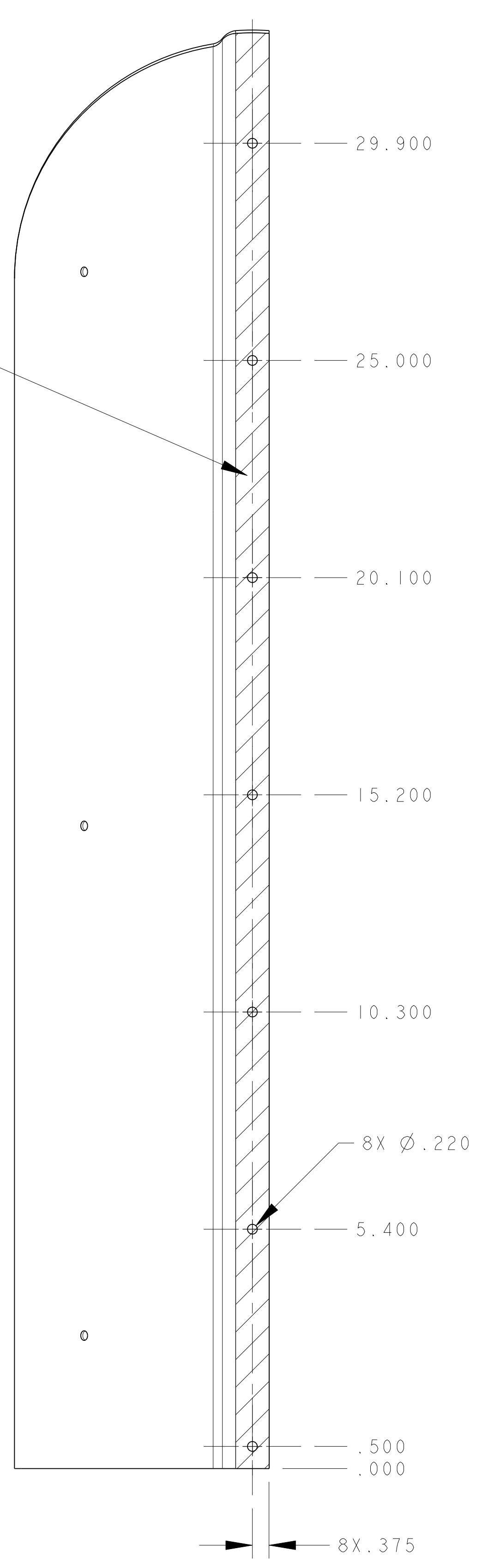
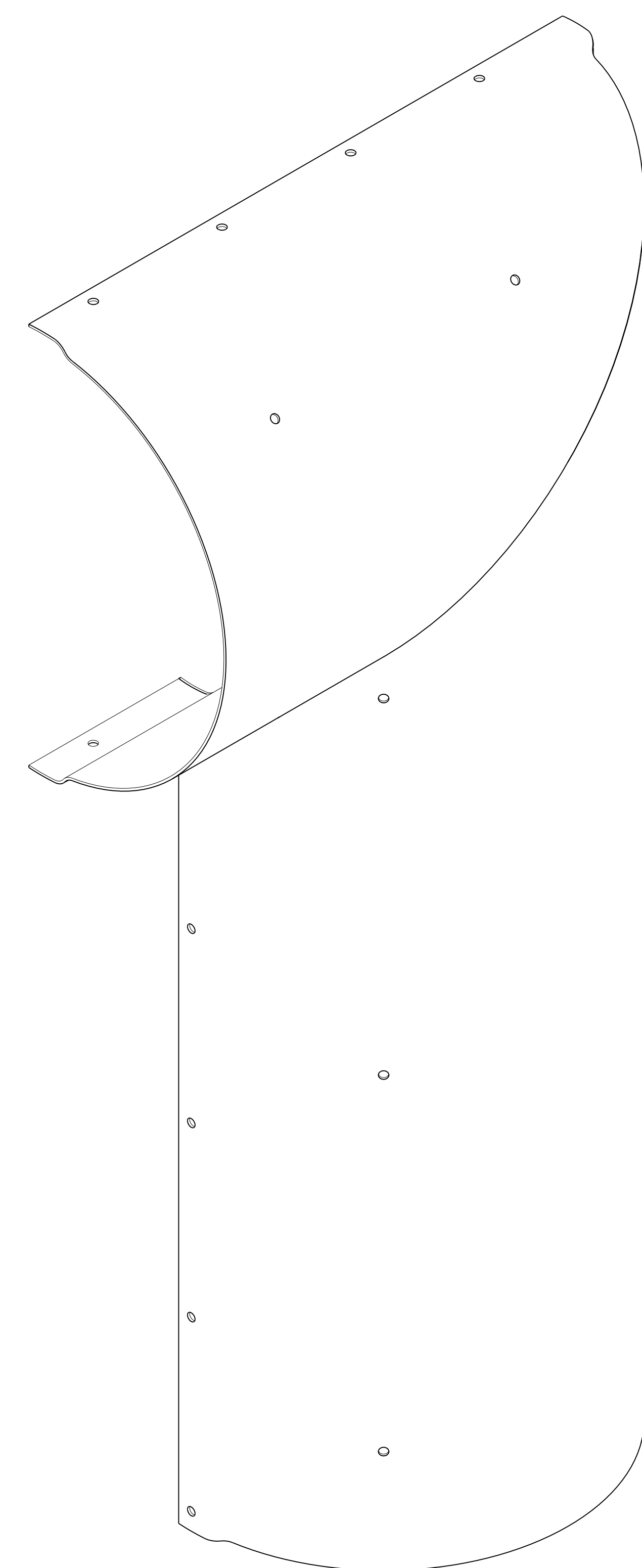
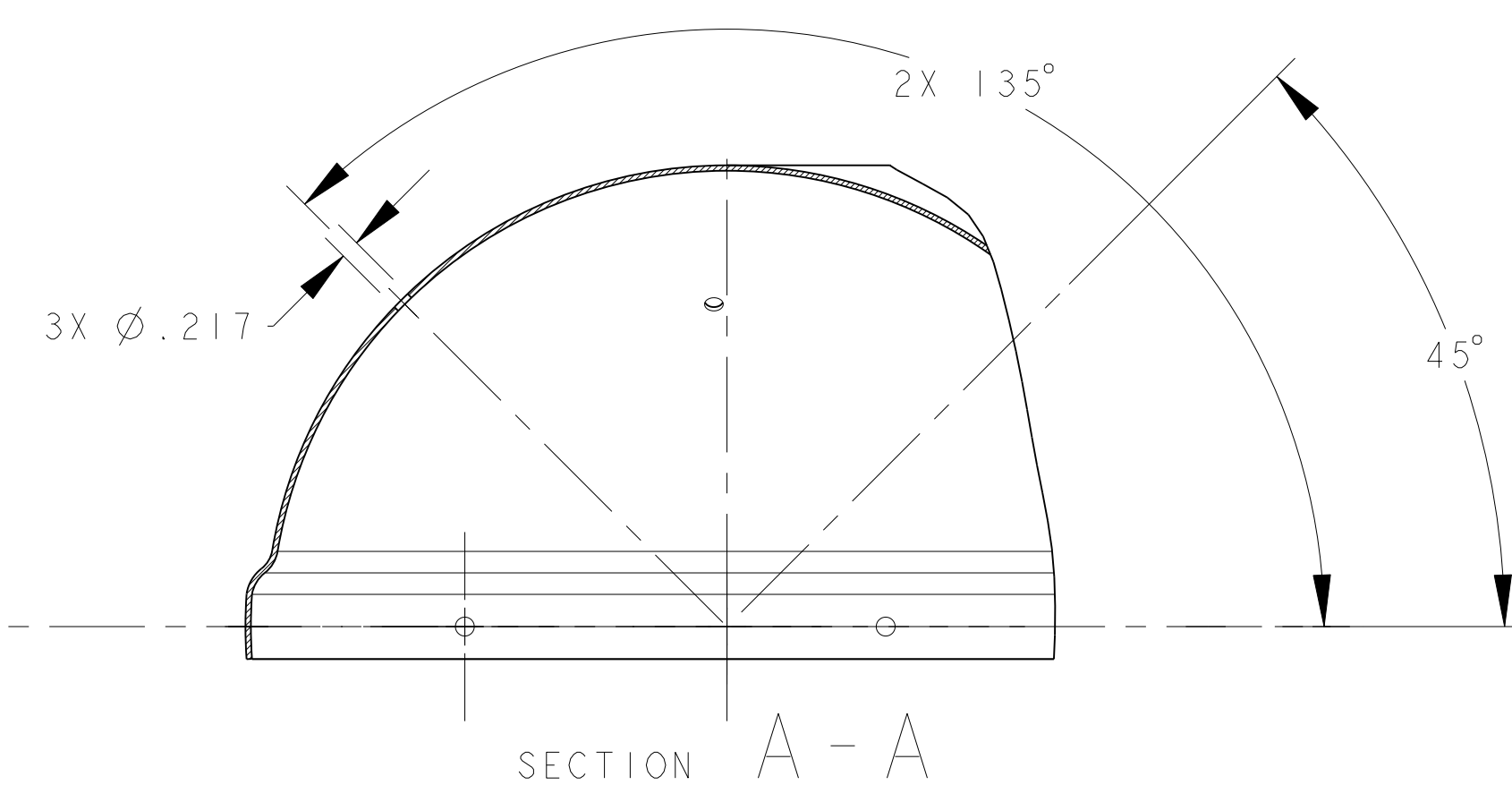
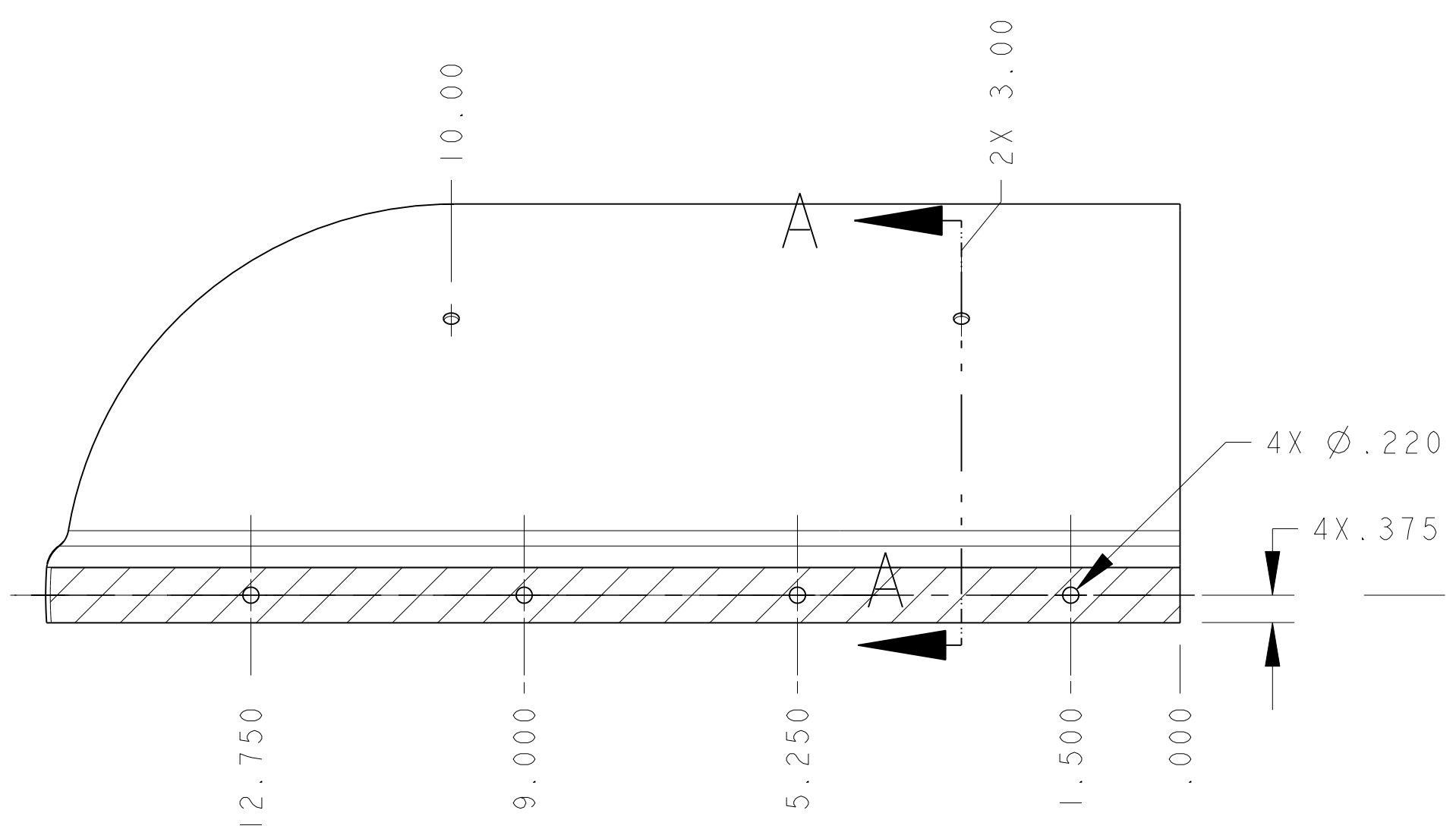


NOTES: (UNLESS OTHERWISE SPECIFIED)

1. THIS IS A CRYOGENIC VACUUM COMPONENT.
2. WELDING OR SOLDERING PROCEDURE: PER VENDOR SPECIFICATION WITH LBNL APPROVAL.
3. CLEANING PROCEDURE: PER VENDOR SPECIFICATION WITH LBNL APPROVAL.
4. PACKAGING AND STORAGE PROCEDURE OF THE COMPONENTS: PER VENDOR SPECIFICATION WITH LBNL APPROVAL.
5. DIMENSIONS AND TOLERANCING PER ANSI Y14.5M-1982. UNITS ARE IN INCHES UNLESS OTHERWISE SPECIFIED.
6. USE OF SULFUR OR SILICONE BEARING OILS, LUBRICANTS, OR COOLANTS ARE STRICTLY PROHIBITED.
7. USE OF RESIN OR RUBBER BONDED ABRASIVES UNDER POWER IS STRICTLY PROHIBITED. USE VITREOUS BONDED ABRASIVES ONLY.
8. TIN NOTED AREAS WITH 60/40 Sn/Pb SOLDER, USE RESIN FLUX.



3	25M815	1	RETAINING BAR	COPPER, OFHC, C101
2	-	1	COPPER SHEET, .063 THICK	COPPER, OFHC, C101
1	-	1	COPPER SHEET, .063 THICK	COPPER, OFHC, C101
DESCRIPTION				MATERIAL
LHC IR FEEDBOX				VACUUM
CLAM SHELL 1, QO5D				
ERNEST ORLANDO LAWRENCE BERKELEY NATIONAL LABORATORY UNIVERSITY OF CALIFORNIA - BERKELEY		MICROFILMED: DWG. TYPE: SHOWN ON: SCALE: 1/2 ASSEM PATENT CLEAR: DESIGN ACCT. NO: CATEGORY CODE: DWG. NO: 2515876 ZSLCE2 LH2002		
UNLESS OTHERWISE SPECIFIED TOLERANCES: X.X ± 0.1 FRACTION ± 1/64 X.XX ± 0.03 ANGLES ± 1.00° X.XXX ± 0.010 FINISH: 125 μm SURFACE TREATMENT: TAG IDENTIFY: TAG DO NOT SCALE PRINT THREADS ARE CLASS 2 CHAMFER ENDS OF ALL SCREW THREADS 30° CUT ROUNDS, 1.5 THREAD RELIEF ON MACHINED THREADS BREAK EDGES .015 MAX. ON MACHINED WORK REMOVE BURRS, WELD SPATTER A LOOSE SCALE IN ACCORDANCE WITH ASME Y14.5M-1982		SHOP ORDERS ITEM PART NO. RECD DATE TIME RECD BY RECD PROJECT: N/A DRAWN: J.M. CHECKED: J.M. DATE: 20-Feb-02 DATE: 21-Apr-02 DATE: 21-Apr-02		
A JDR/DPO 11-06-02 INITIAL RELEASE REV/DWG/CHK/ZONE/DATE CHANGES		SHEET 1 OF 1 SIZE: REV: A		

2515876 A 1
 SHEET 1 OF 1
 SIZE: REV: A