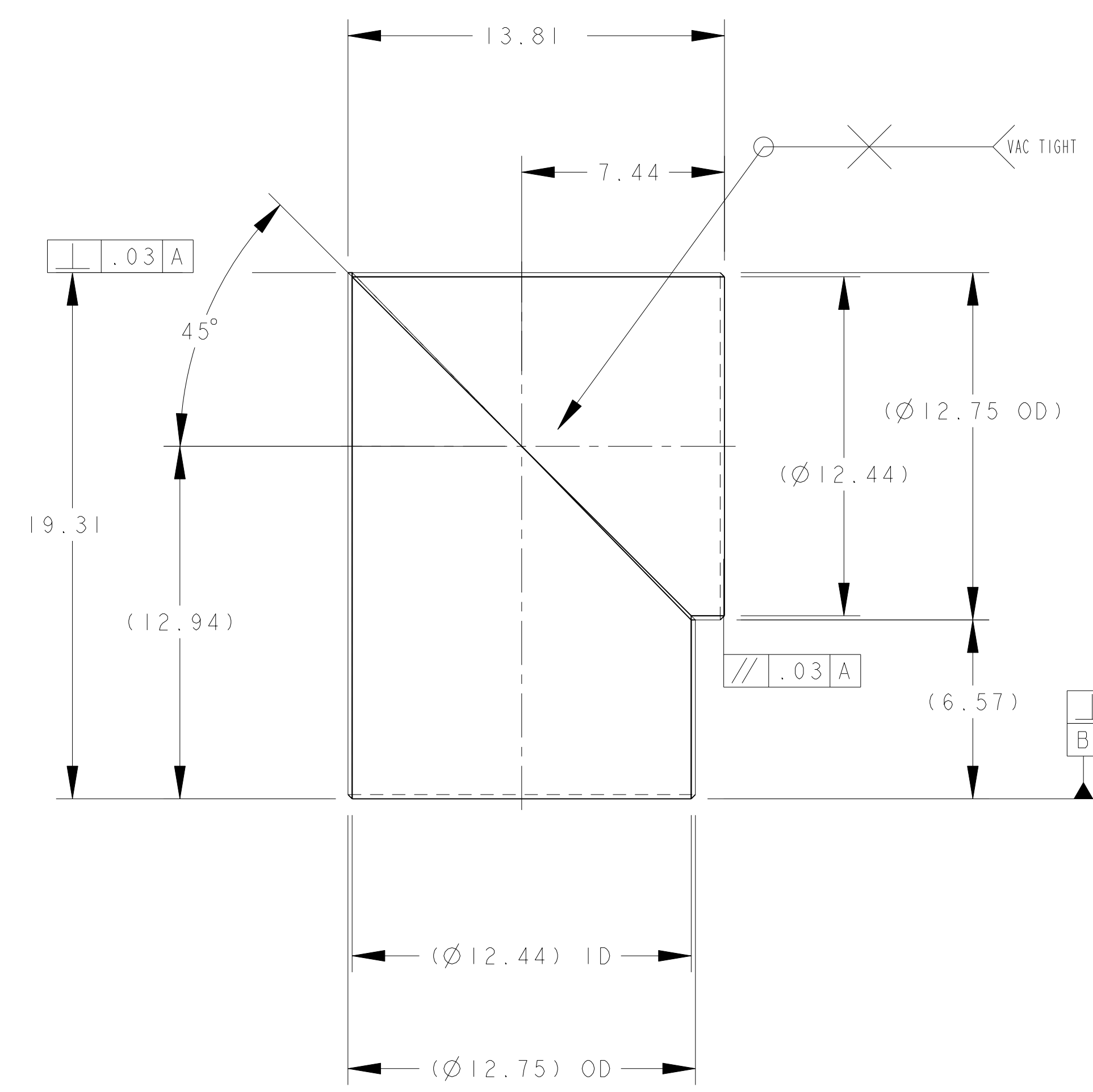
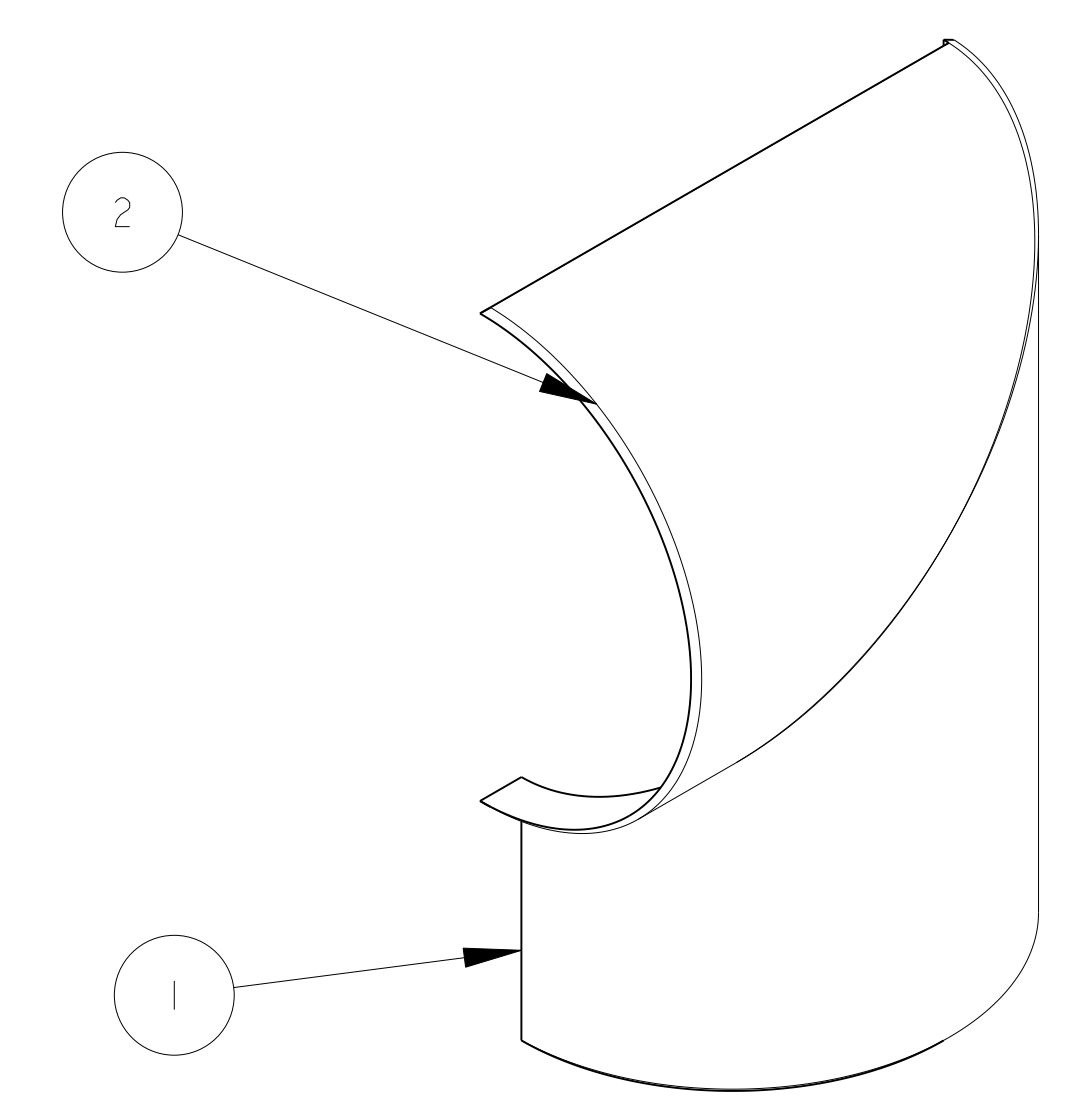
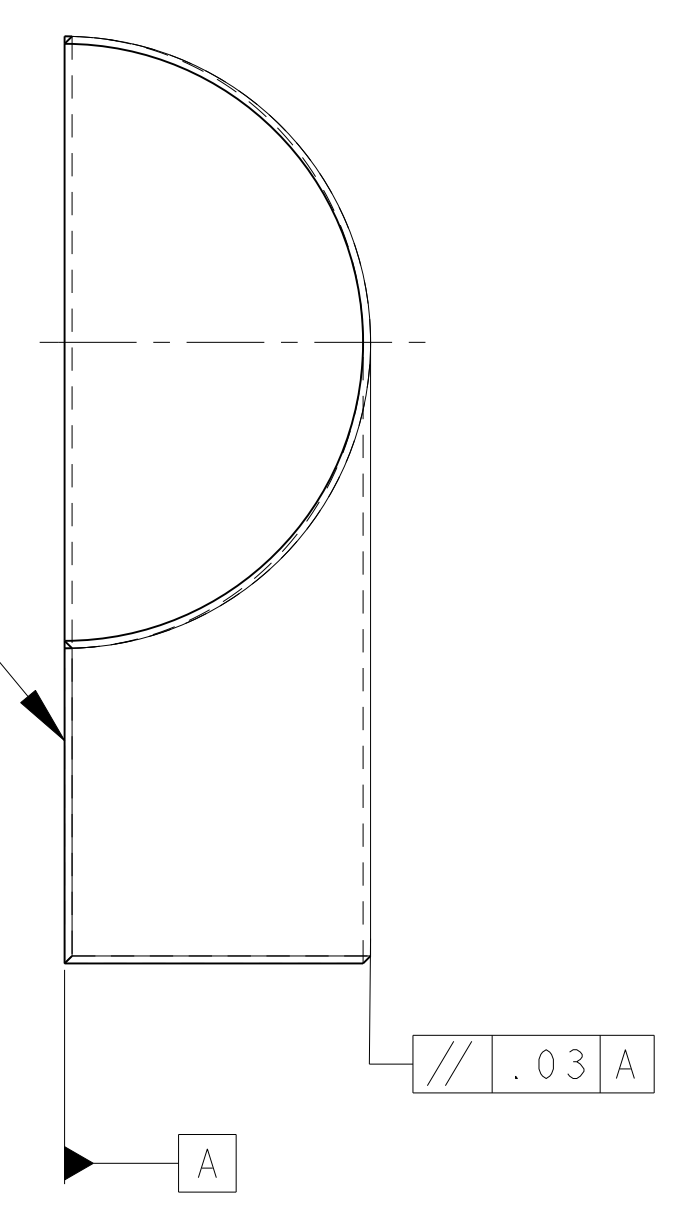


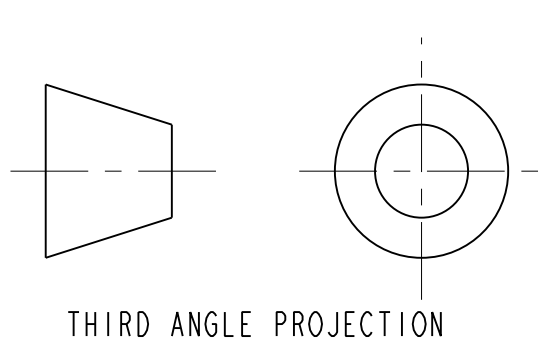
ITEM	PART NO.	RECD	DESCRIPTION	MATERIAL
2	-		PIPE, 12 NPS, SCHED. 5 S, PER ASTM A 312	304L
1	-		PIPE, 12 NPS, SCHED. 5 S, PER ASTM A 312	304L



BEVEL 45° X .10
ALL OUTSIDE EDGES



- NOTES: UNLESS OTHERWISE SPECIFIED,
- DIMENSIONS AND TOLERANCING PER ANSI Y14.5M-1982 UNITS ARE IN INCHES UNLESS OTHERWISE SPECIFIED.
 - USE OF SULFUR OR SILICONE BEARING OILS, LUBRICANTS, OR COOLANTS ARE STRICTLY PROHIBITED
 - USE OF RESIN OR RUBBER BONDED ABRASIVES UNDER POWER IS STRICTLY PROHIBITED. USE VITREOUS BONDED ABRASIVES ONLY.
 - CLEAN AFTER MACHINING PER VENDOR SPECIFICATION; SUBJECT TO LBNL APPROVAL.
 - VENDOR SUGGESTED CHANGES TO WELD PREPS; SUBJECT TO LBNL APPROVAL.
 - PROTECT FINISHED PART BY BAGGING OR SIMILAR METHOD TO PROTECT AND MAINTAIN CLEANLINESS DURING SHIPMENT AND STORAGE.
 - VENDOR SUGGESTED CHANGES TO TOLERANCES TO FACILITATE ASSEMBLY; SUBJECT TO LBNL APPROVAL
 - ESTIMATED WEIGHT = 22 LBS



TOLERANCES		UNLESS OTHERWISE SPECIFIED		SHOP ORDERS		SER. NO. -		ERNEST ORLANDO LAWRENCE	
X.X ± 0.1	FRAC. ± 1/64	ACCT. NO.	NO.	NO.	NO.	NO.	NO.	DATE	BERKELEY NATIONAL LABORATORY
X.XX ± 0.03	Angles ± 1.00°	DEL. TO.	RECD.	ISSD.	RECD.	RECD.	RECD.	DATE	UNIVERSITY OF CALIFORNIA - BERKELEY
X.XXX ± 0.010	FINISH 125 \sqrt{Ra}	SURFACE TREATMT		IDENT. METHOD		TAG		LHC IR FEEDBOX	
DO NOT SCALE PRINT		PROJECT NUMBER		PROJECT TAG		PROJECT NAME		VACUUM	
THREADS ARE CLASS 2		PROJECT NAME		PROJECT NAME		PROJECT NAME		ENCLOSURE CHIMNEY HALF 1, JCI	
CHAMFER ENDS OF ALL SCREW THREADS 30°		PROJECT NAME		PROJECT NAME		PROJECT NAME		MICROFILMED: ASSEM VARIOUS	
CUT ROUND, 1.5 THREAD RELIEF ON MACHINED THREADS		PROJECT NAME		PROJECT NAME		PROJECT NAME		SCALE: 1/4	
BREAK EDGES .016 MAX. ON MACHINED WORK		PROJECT NAME		PROJECT NAME		PROJECT NAME		DO NOT SCALE PRINTS	
REMOVE BURRS, WELD SPLATTER & LOOSE SCALE		PROJECT NAME		PROJECT NAME		PROJECT NAME		SHEET 1 OF 1	
IN ACCORDANCE WITH ASME Y14.5M & B46.1		PROJECT NAME		PROJECT NAME		PROJECT NAME		DWG. NO. 2515814	
REV	DWG	CHK	ZONE	DATE	CHANGES	DESIGN ACCT. NO.	CATEGORY CODE	DWG. NO.	SIZE
A	MJK	DPO		9/17/02	INITIAL RELEASE	Z5LCE2	LH2002	2515814	A