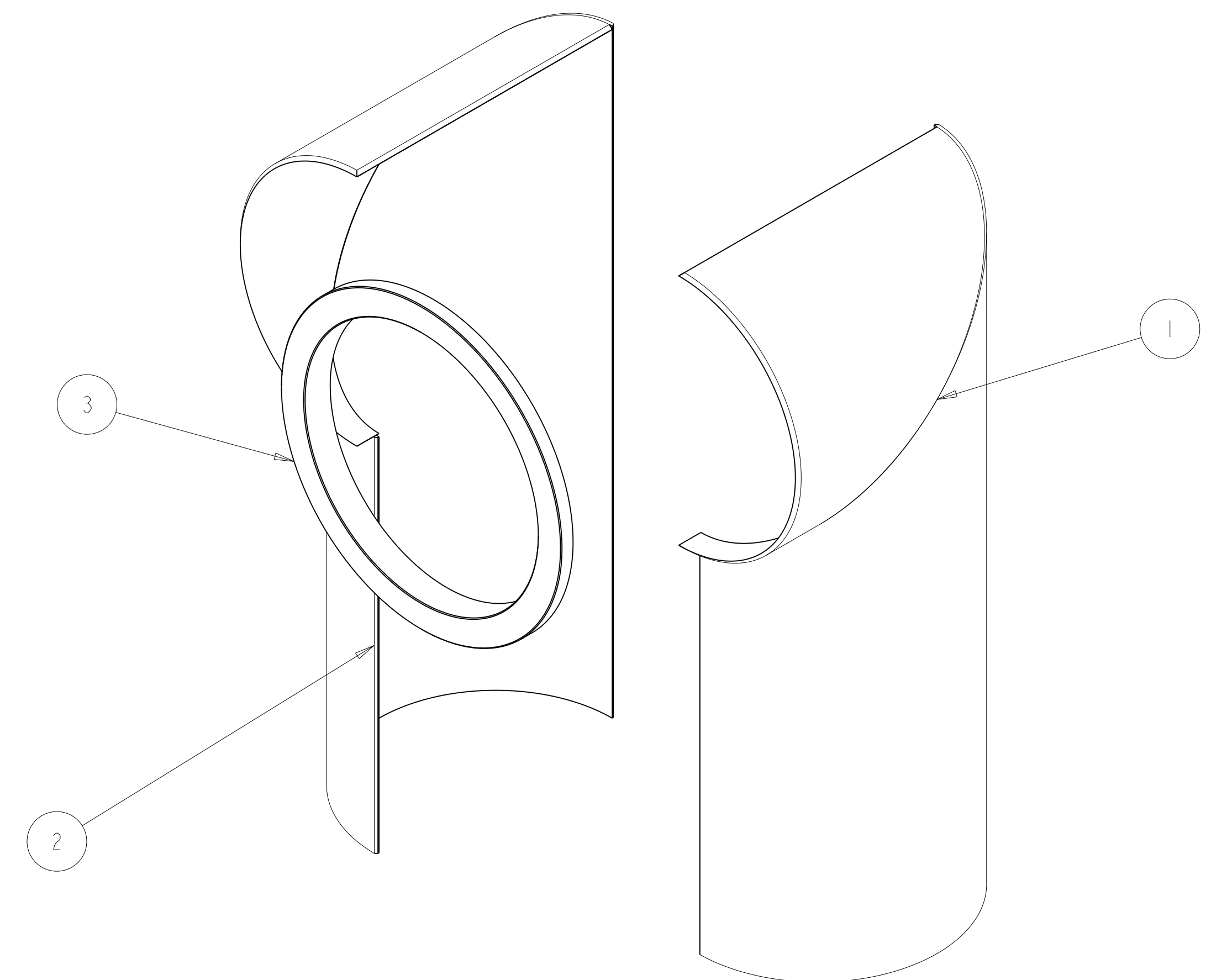
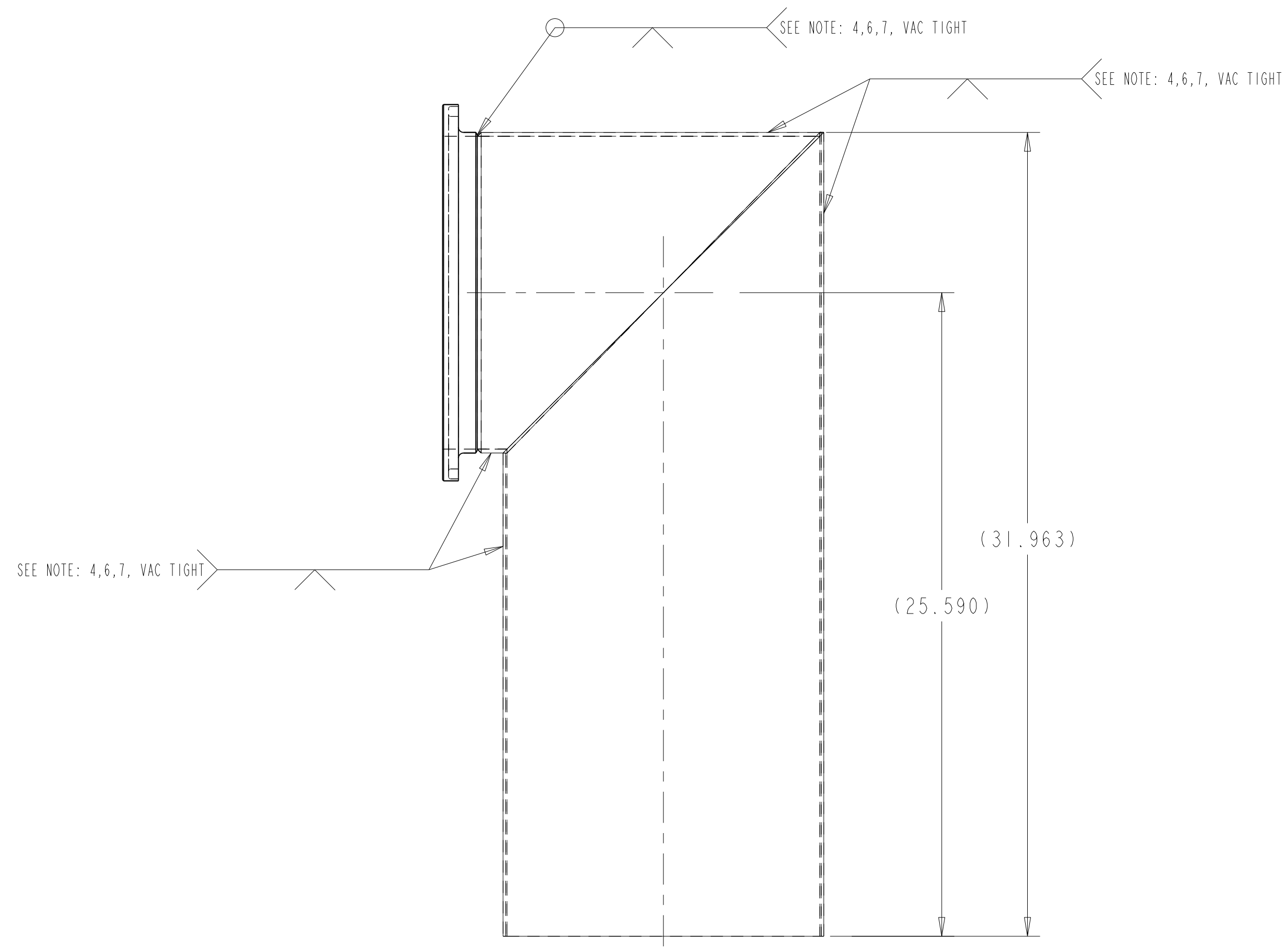
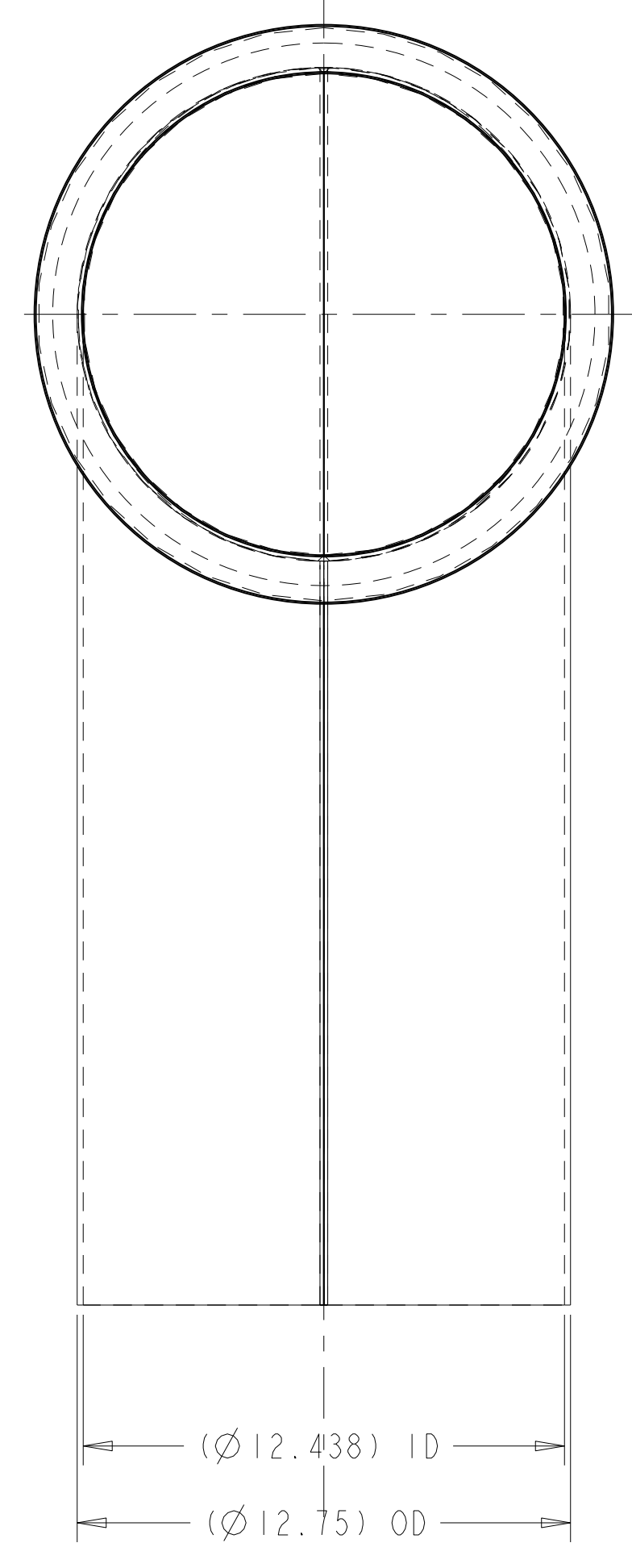
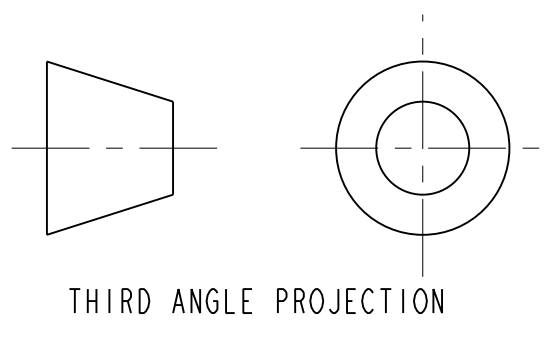


ITEM	PART NO.	RECD	DESCRIPTION	MATERIAL
3	251169		ORL CHIMNEY FLANGE	304L SS
2	251579		ENCLOSURE CHIMNEY HALF 2, JC2	304L SS
1	251578		ENCLOSURE CHIMNEY HALF 1, JC2	304L SS



- NOTES: UNLESS OTHERWISE SPECIFIED,
- DIMENSIONS AND TOLERANCING PER ANSI Y14.5M-1982 UNITS ARE IN INCHES UNLESS OTHERWISE SPECIFIED.
 - USE OF SULFUR OR SILICONE BEARING OILS, LUBRICANTS, OR COOLANTS ARE STRICTLY PROHIBITED
 - USE OF RESIN OR RUBBER BONDED ADRASIVES UNDER POWER IS STRICTLY PROHIBITED. USE VITREOUS BONDED ABRASIVES ONLY.
 - CLEAN AFTER MACHINING PER VENDOR SPECIFICATION; SUBJECT TO LBNL APPROVAL.
 - VENDOR SUGGESTED CHANGES TO WELD PREPS; SUBJECT TO LBNL APPROVAL.
 - PERFORM ALL WELDS AT THE TOP ASSEMBLY.
 - ALL VACUUM WELDS TO BE CONTINUOUS FUSION WELDS UTILIZING THE TIG PROCESS AND DONE IN A CLEAN FACILITY. NO FILLER ROD ALLOWED.
 - PROTECT FINISHED PART BY BAGGING OR SIMILAR METHOD TO PROTECT AND MAINTAIN CLEANLINESS DURING SHIPMENT AND STORAGE.
 - VENDOR SUGGESTED CHANGES TO TOLERANCES TO FACILITATE ASSEMBLY; SUBJECT TO LBNL APPROVAL
 - ESTIMATED WEIGHT = 55 LBS



REV	DWG	CHK	ZONE	DATE	CHANGES
A	JDR	DPO		11-6-02	INITIAL RELEASE
					CHANGES

TOLERANCES		FRAC. ± 1/64		SHOP ORDERS	
X.X ± 0.1				ACCT NO.	NO. RECD
X.XX ± 0.01		Angles ± 1.00°		DEL TO	DATE ISSD
X.XXX ± 0.005		FINISH 125 \sqrt{Ra}		DEL TO	DATE RECD

ERNEST ORLANDO LAWRENCE
BERKELEY NATIONAL LABORATORY
UNIVERSITY OF CALIFORNIA - BERKELEY

LHC IR FEEDBOX
VACUUM
ENCLOSURE JUMPER, JC2

MICROFILMED:	DWG. TYPE	SHOWN ON	SCALE: 0.250	DO NOT SCALE PRINTS
	ASSEM	VARIOUS		
PATENT CLEAR:	DESIGN ACCT. NO.	CATEGORY CODE	DWG. NO.	SIZE REV.
	Z5LCE2	LH2002	2515774	A