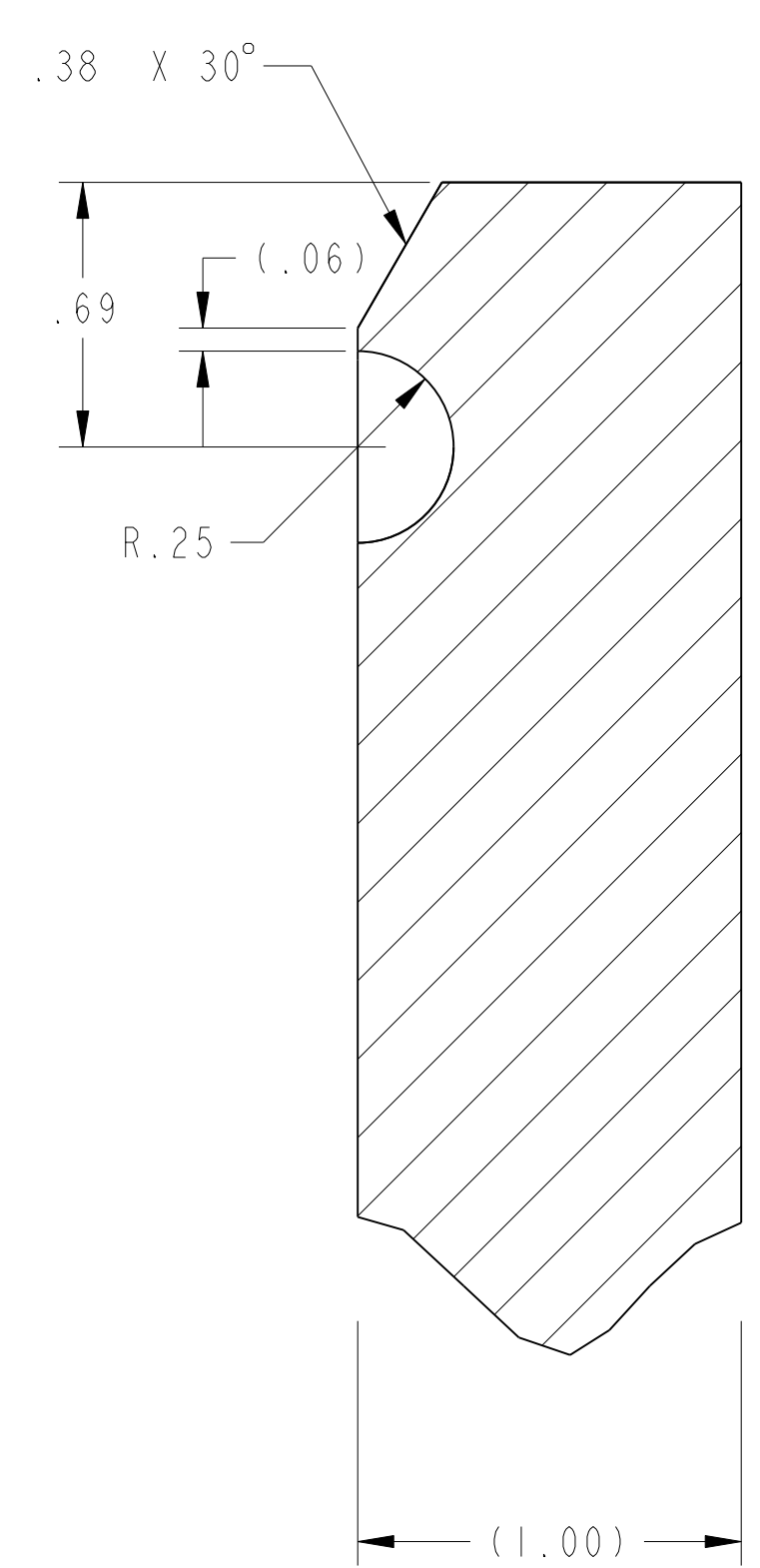
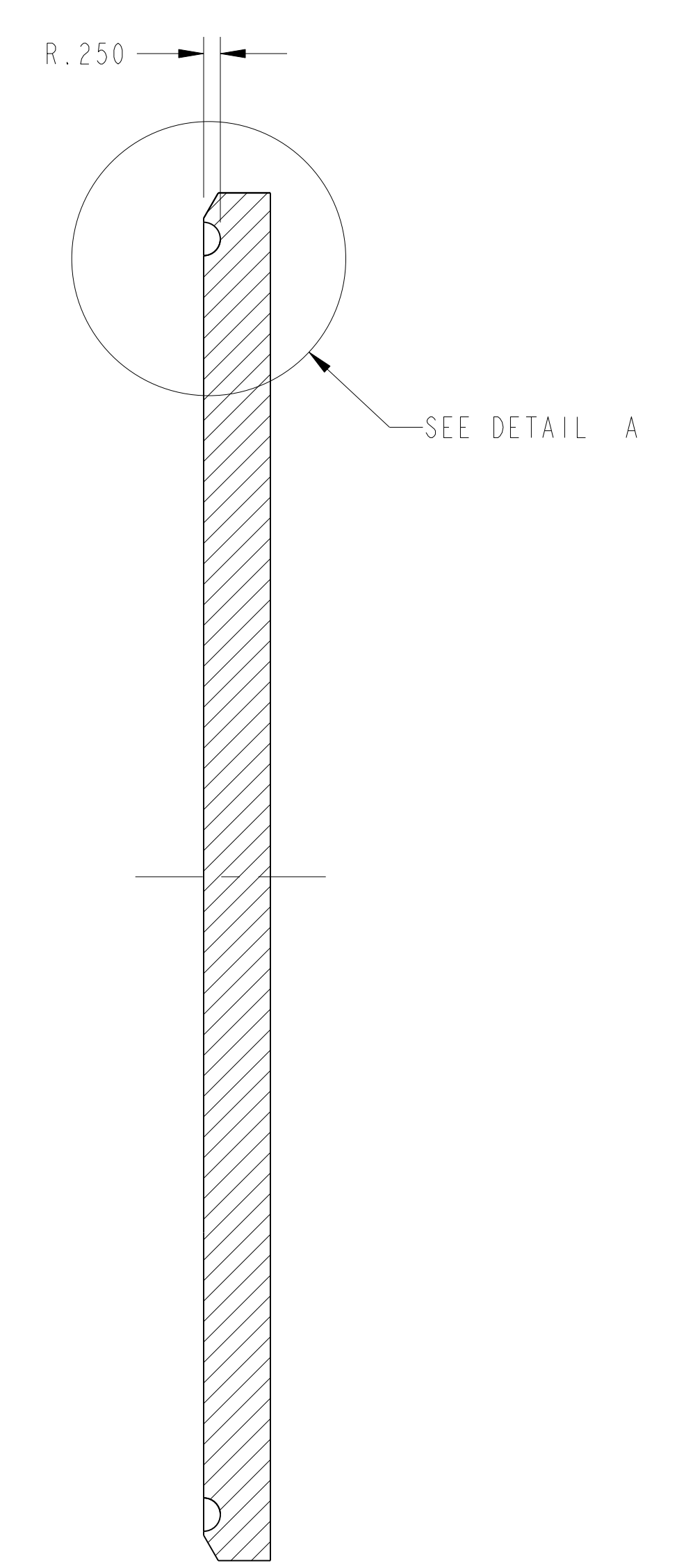
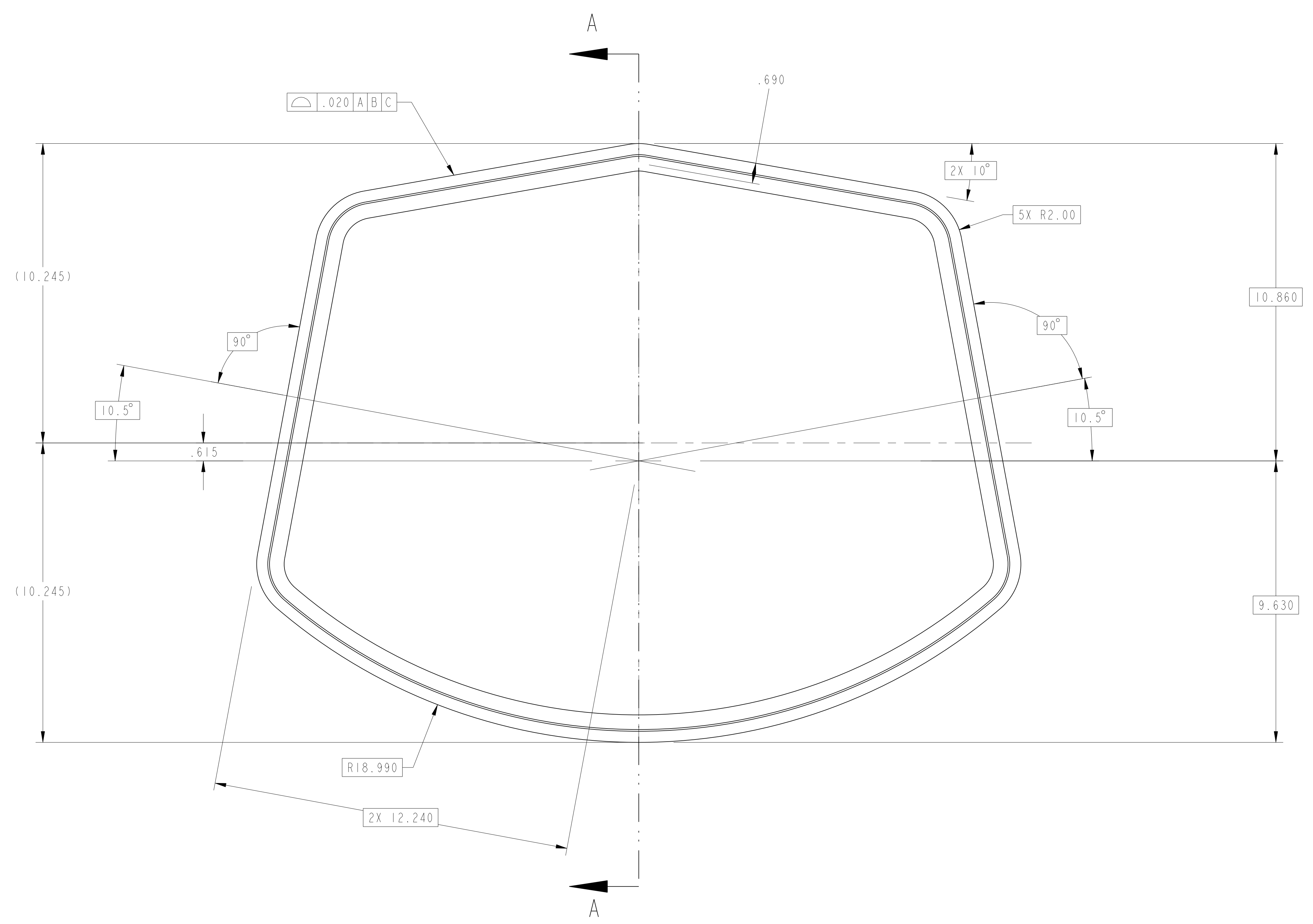


NOTES: UNLESS OTHERWISE SPECIFIED,

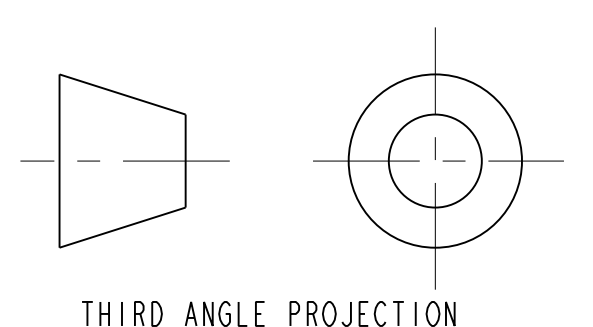
1. DIMENSIONS AND TOLERANCING PER ANSI Y14.5M-1982 UNITS ARE IN INCHES UNLESS OTHERWISE SPECIFIED.
2. USE OF SULFUR OR SILICONE BEARING OILS, LUBRICANTS, OR COOLANTS ARE STRICTLY PROHIBITED.
3. USE OF RESIN OR RUBBER BONDED ABRASIVES UNDER POWER IS STRICTLY PROHIBITED. USE VITREOUS BONDED ABRASIVES ONLY.
4. CLEAN AFTER MACHINING PER VENDOR SPECIFICATION; SUBJECT TO LBNL APPROVAL.
5. VENDOR SUGGESTED CHANGES TO WELD PREPS; SUBJECT TO LBNL APPROVAL.
6. PROTECT FINISHED PART BY BAGGING OR SIMILAR METHOD TO PROTECT AND MAINTAIN CLEANLINESS DURING SHIPMENT AND STORAGE.
7. VENDOR SUGGESTED CHANGES TO TOLERANCES TO FACILITATE ASSEMBLY; SUBJECT TO LBNL APPROVAL.
8. ESTIMATED WEIGHT = 101 LBS



DETAIL A
SCALE 2.000



SECTION A-A



REV	DWG	CHK	ZONE	DATE	CHANGES
A	JDRDPO	01/17/02			INITIAL RELEASE

UNLESS OTHERWISE SPECIFIED		SHOP ORDERS	
TOLERANCES	X.X ± 0.1 FRACTION ± 1/64	NO.	DATE
	X.XX ± 0.03 ANGLES ± 1.00°	NO.	DATE
	X.XXX ± 0.010 FINISH 125 μm	NO.	DATE
DO NOT SCALE PRINT		DATE	DATE
TRENDS ARE CLASS 1		DATE	DATE
CHAMFER ENDS OF ALL SCREW THREADS 30°		DATE	DATE
CUT ROUNDS .015 MAX. ON MACHINED WORK		DATE	DATE
REMOVE BURRS, WELD SPATTER & LOOSE SCALE		DATE	DATE
IN ACCORDANCE WITH ASME Y14.5M-1982		DATE	DATE

DESCRIPTION		MATERIAL		MAT. LOCATION	
PLATE, 1" THK. PER ASTM A-240 HR. ANEALD & PICKLED		304L SS			
ERNEST ORLANDO LAWRENCE BERKELEY NATIONAL LABORATORY UNIVERSITY OF CALIFORNIA - BERKELEY					
LHC IR FEEDBOX CRYOGENICS					
LIQUID HELIUM TANK, END PLATE					
MICROFILMED:	DWG. TYPE:	SCALE:	SCALE:	DO NOT SCALE PRINTS	
PART	SHOWN ON	0.500	0.500		
PATENT CLEAR:		DESIGN ACCT. NO.	CATEGORY CODE	DWG. NO.	REV.
		ZSLCE2	LH2003	2515766	A
SHEET 1 OF 1					

2515766 A 1
 SHEET 1 OF 1