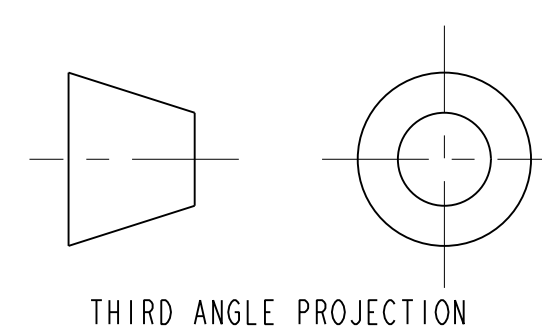


NOTES: UNLESS OTHERWISE SPECIFIED.

- DIMENSIONS AND TOLERANCING PER ANSI Y14.5M-1982 UNITS ARE IN INCHES UNLESS OTHERWISE SPECIFIED.
- USE OF SULFUR OR SILICONE BEARING OILS, LUBRICANTS, OR COOLANTS ARE STRICTLY PROHIBITED.
- USE OF RESIN OR RUBBER BONDED ABRASIVES UNDER POWER IS STRICTLY PROHIBITED. USE VITREOUS BONDED ABRASIVES ONLY.
- CLEAN AFTER MACHINING PER VENDOR SPECIFICATION; SUBJECT TO LBNL APPROVAL.
- VENDOR SUGGESTED CHANGES TO WELD PREPS; SUBJECT TO LBNL APPROVAL.
- PROTECT FINISHED PART BY BAGGING OR SIMILAR METHOD TO PROTECT AND MAINTAIN CLEANLINESS DURING SHIPMENT AND STORAGE.
- VENDOR SUGGESTED CHANGES TO TOLERANCES TO FACILITATE ASSEMBLY; SUBJECT TO LBNL APPROVAL.
- OPERATING CONDITIONS, 4.2k, 70 psig (4.4bar) TEST PRESSURE.
- ESTIMATED WEIGHT: 768 LBS.
- TACK WELD APPROPRIATE WELD BACKING STRIPS AROUND ENTIRE PERIMETER OF VESSEL OPENING. COVER SHOWN IN DRAWING 25M8026 WILL BE WELDED INTO OPENING DURING A LATER STEP PER DRAWING 24C3526.
- TOOLING ITEM NOT SHOWN



REV	DATE	BY	CHK	ZONE	DATE	INITIAL RELEASE CHANGES
A	MJK	DPO				

UNLESS OTHERWISE SPECIFIED
 X.X ± 0.1 FRACTION ± 1/64
 X.XX ± 0.03 ANGLES ± 1.0°
 X.XXX ± 0.010 FINISH
 DO NOT SCALE PRINT
 TOLERANCES ARE CLASS 2
 CHAMFER ENDS OF ALL SCREW THREADS 30°
 BREAK EDGES .156 MAX. ON MACHINED WORK
 REMOVE BURRS, WELD SPATTER & LOOSE SCALE
 IN ACCORDANCE WITH ASME B16.9 & B31.1

ITEM	PART NO	RECD	DESCRIPTION	MATERIAL
34	251900	2	TANK SUPPORT BRACKET	SS 304L
33	251667	1	PUSH BLOCK	ALUM 6061
32	25M813	1	CLAMP COVER 1"	OFHC, C101
31	251676	1	LIQUID HELIUM TANK, END PLATE	304L SS
30	251105	1	LIQUID HELIUM TANK, UPPER SHELL	304L SS
29	251115	1	LIQUID HELIUM TANK, END PLATE (1 PORT)	304L SS
28	-	4	SCH. MSK. 8, 1/2LG. SILVER PLATED	SS 18-8
27	-	4	LOCK WASHER, MS	SS
26	251110	8	LIQUID HELIUM TANK, WELDMENT RING	304L SS
25	-	1	COPPER BRAID, 1" X 1/8"	SS
23	251909	1	LIQUID HELIUM PORT STUB	304L SS
22	251908	1	CHECK VALVE STUB	304L SS
21	251907	1	RELIEF PORT PIPE STUB	304L SS
20	251899	2	PIPING SUPPORT PAD	SS 304L
19	251687	1	CABLE LOOM BASE-B ASSEMBLY	-
18	251457	2	HTS SOLDER JOINT ASSEMBLY-8A	-
17	251688	2	CABLE LOOM BASE ASSEMBLY	-
15	251669	2	HTS SOLDER JOINT ASSEMBLY-B	-
14	251689	3	CABLE LOOM BASE-A ASSEMBLY	-
13	251665	12	SOLDER BOX GUSSET	SS
12	25M900	1	CLAMP BASE PLATE	CDA 101
11	25M860	4	TANK SUPPORT BOSS	304L SS
10	251109	4	LIQUID HELIUM TANK, HALF RIB, LOWER	304L SS
9	251108	4	LIQUID HELIUM TANK, UPPER HALF RIB	SS 304L
8	251107	5	LIQUID HELIUM TANK, FULL RIB	SS 304L
6	251104	1	LIQUID HELIUM TANK, PORT FRAME	SS 304L
5	251103	1	LIQUID HELIUM TANK, HORIZONTAL LOWER RIB	SS 304L
4	251102	1	LIQUID HELIUM TANK, HORIZONTAL UPPER RIB	SS 304L
2	251898	4	LIFTING PAD	SS 304L
1	251106	1	LIQUID HELIUM TANK, LOWER SHELL	304L SS

SHOP ORDERS

ERNEST ORLANDO LAWRENCE
 BERKELEY NATIONAL LABORATORY
 UNIVERSITY OF CALIFORNIA BERKELEY

LHC 18 FEEDBOX
 CRYOGENICS
 LIQUID HELIUM TANK - 8 PORT LEFT

SCALE: 1/4
 SHEET 1 OF 4

DATE: 04-APR-02
 DRAWN BY: JZ
 CHECKED BY: JZ
 DATE: 04-APR-02

REV: 4
 DATE: 04-APR-02

2515756 A

8

7

6

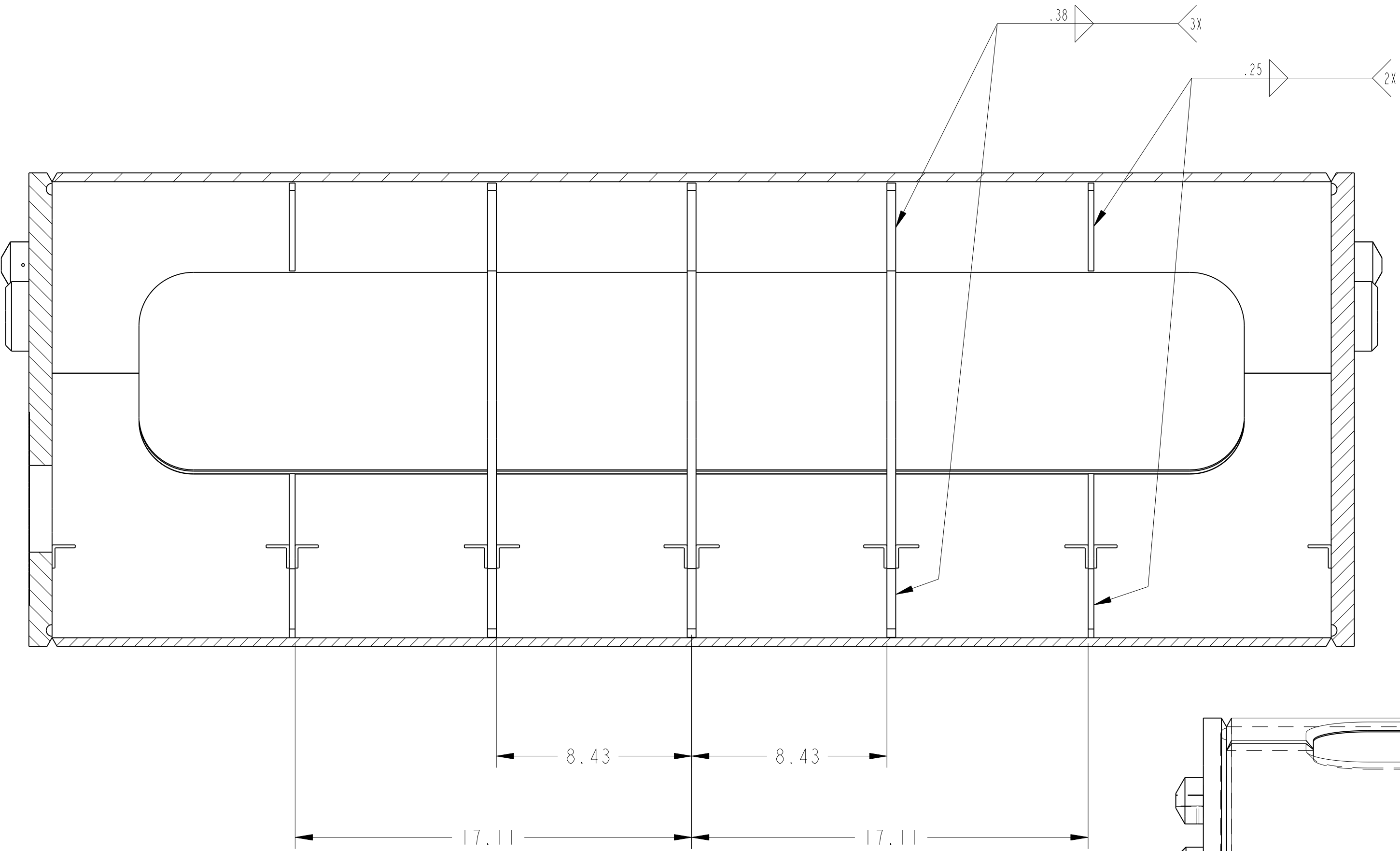
5

4

3

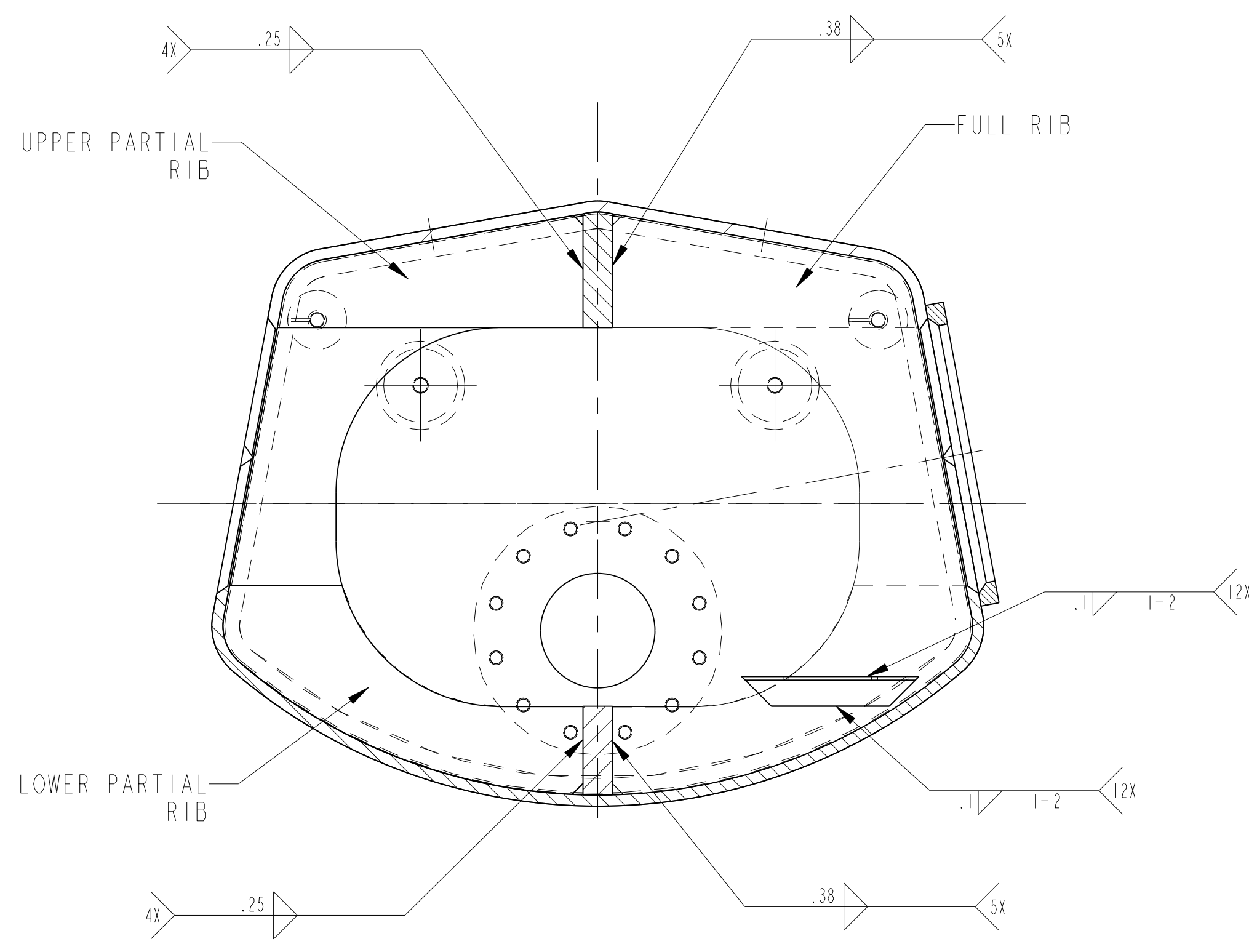
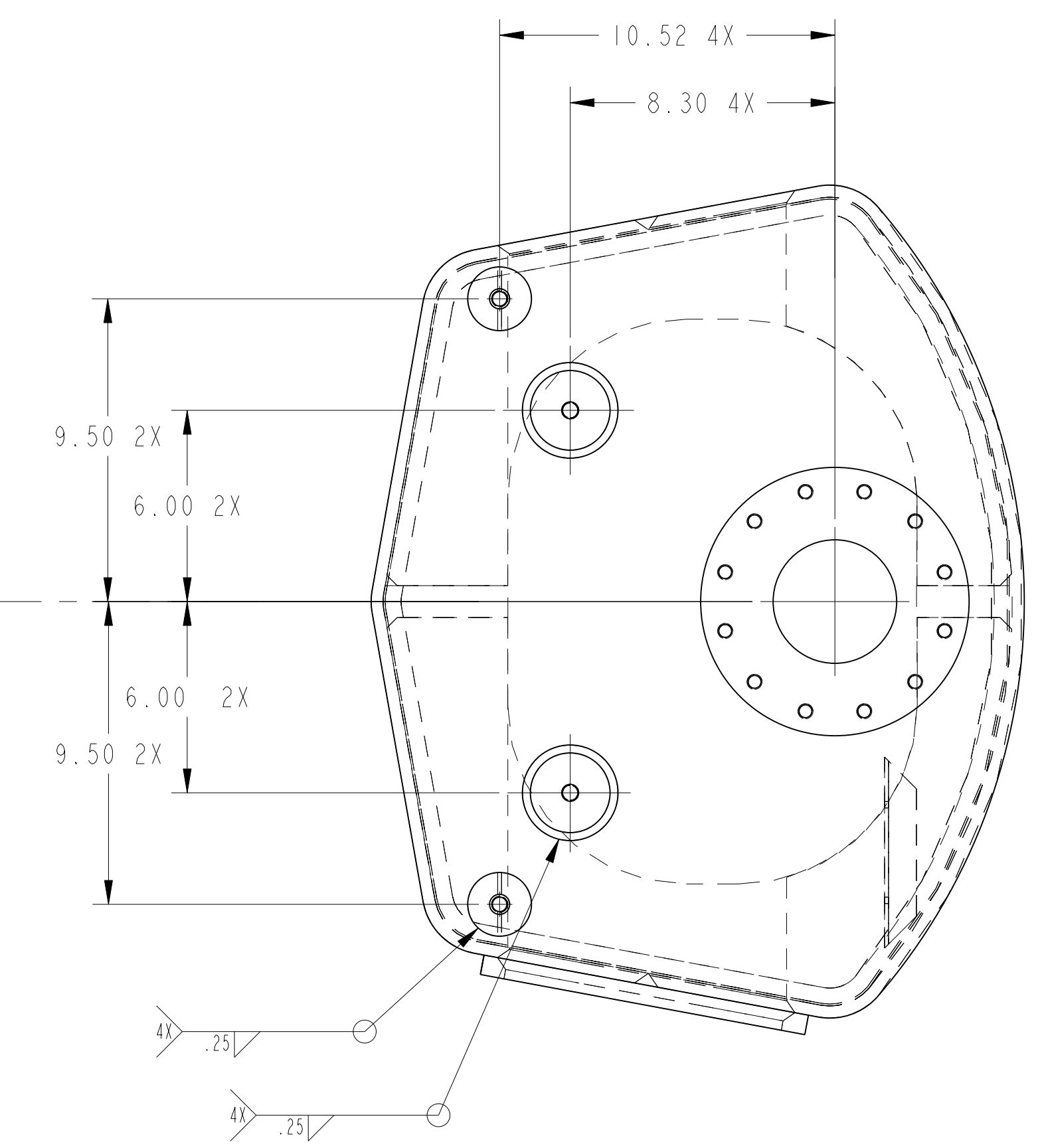
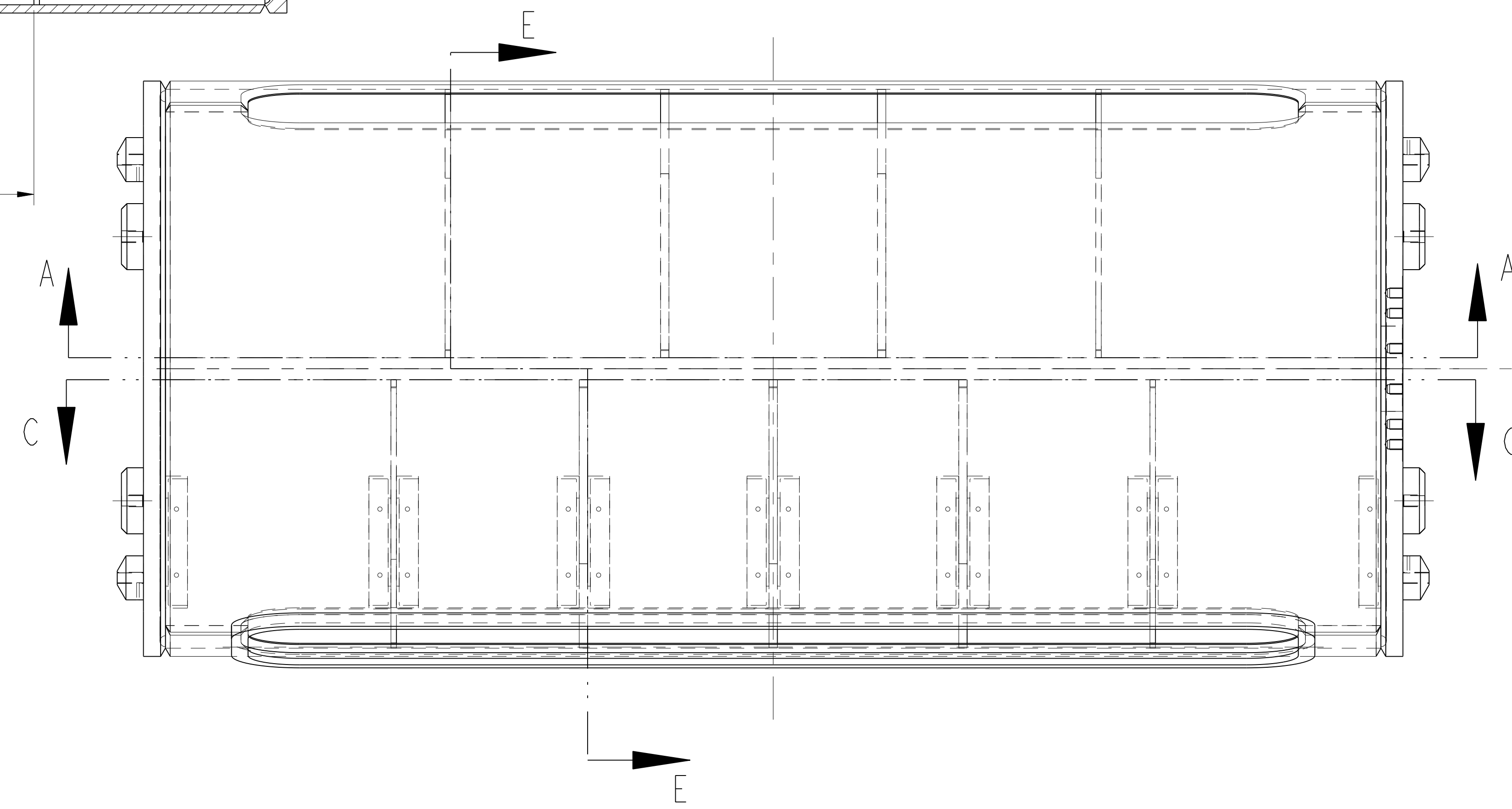
2

1

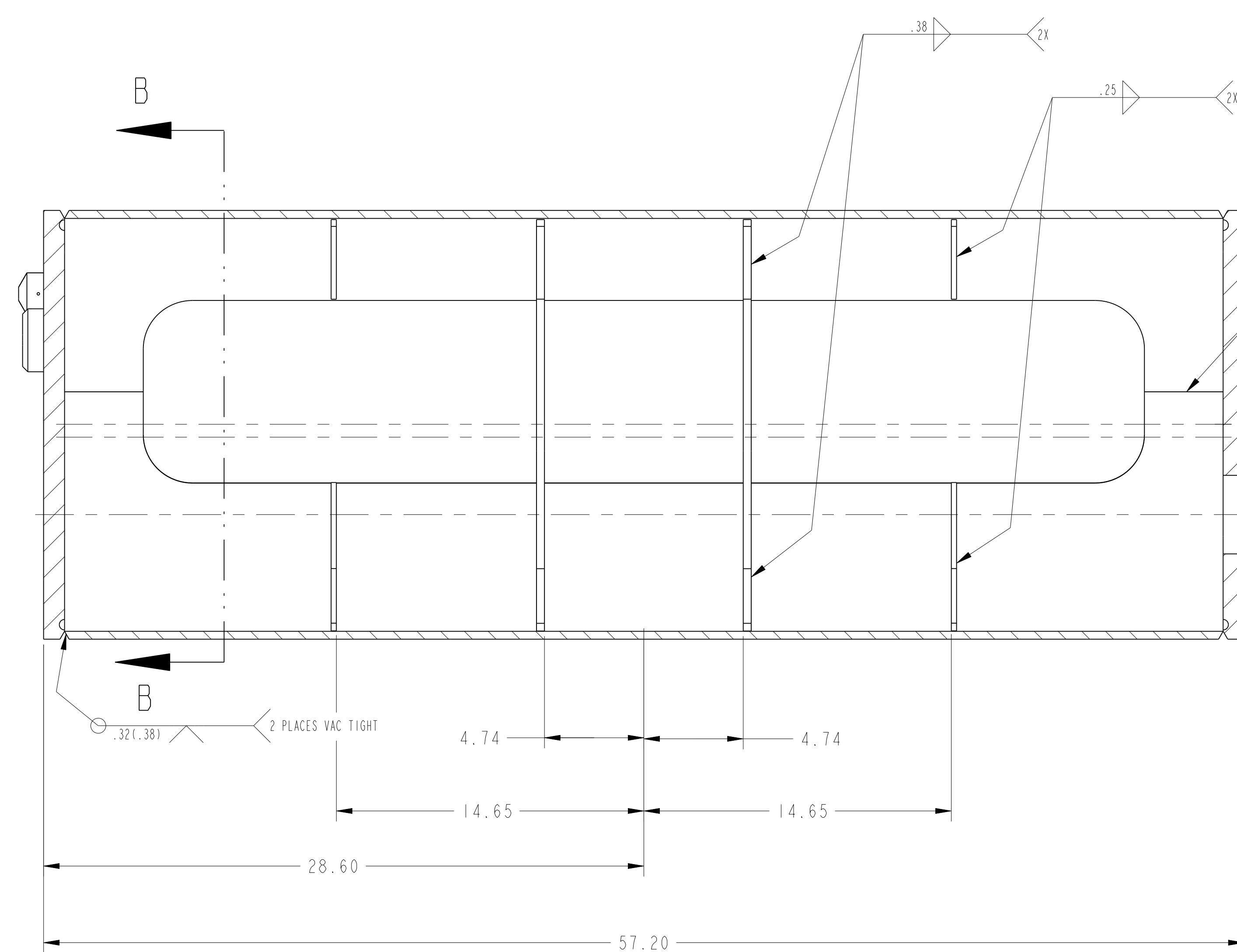


1ST WELDMENT STAGE

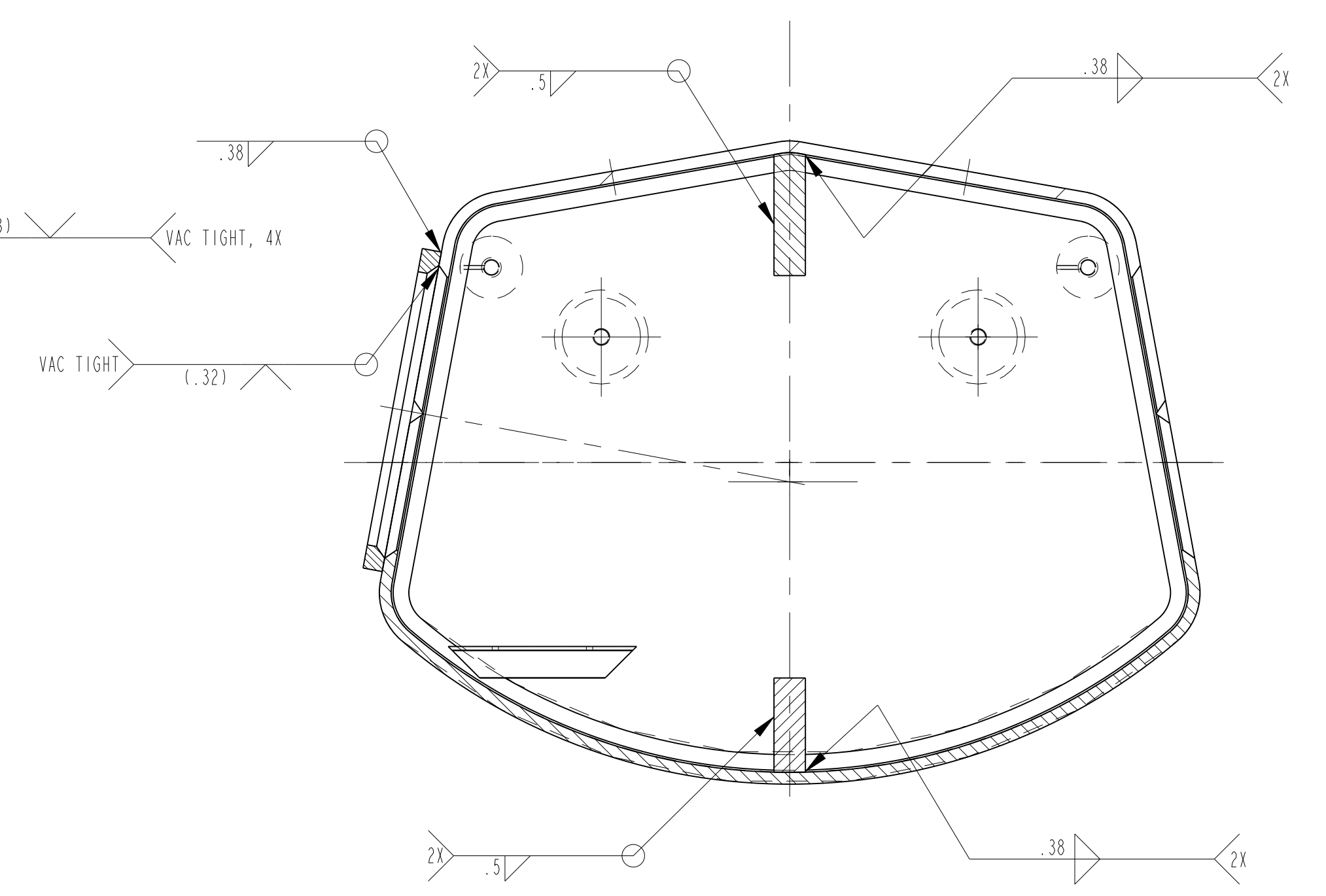
SECTION C-C
SCALE 1/4
VIEW ROTATED 180°



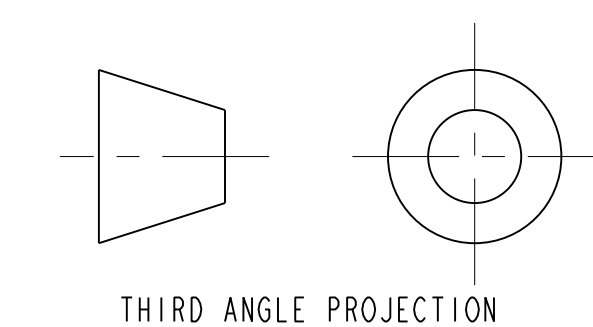
SECTION E-E



SECTION A-A



SECTION B-B



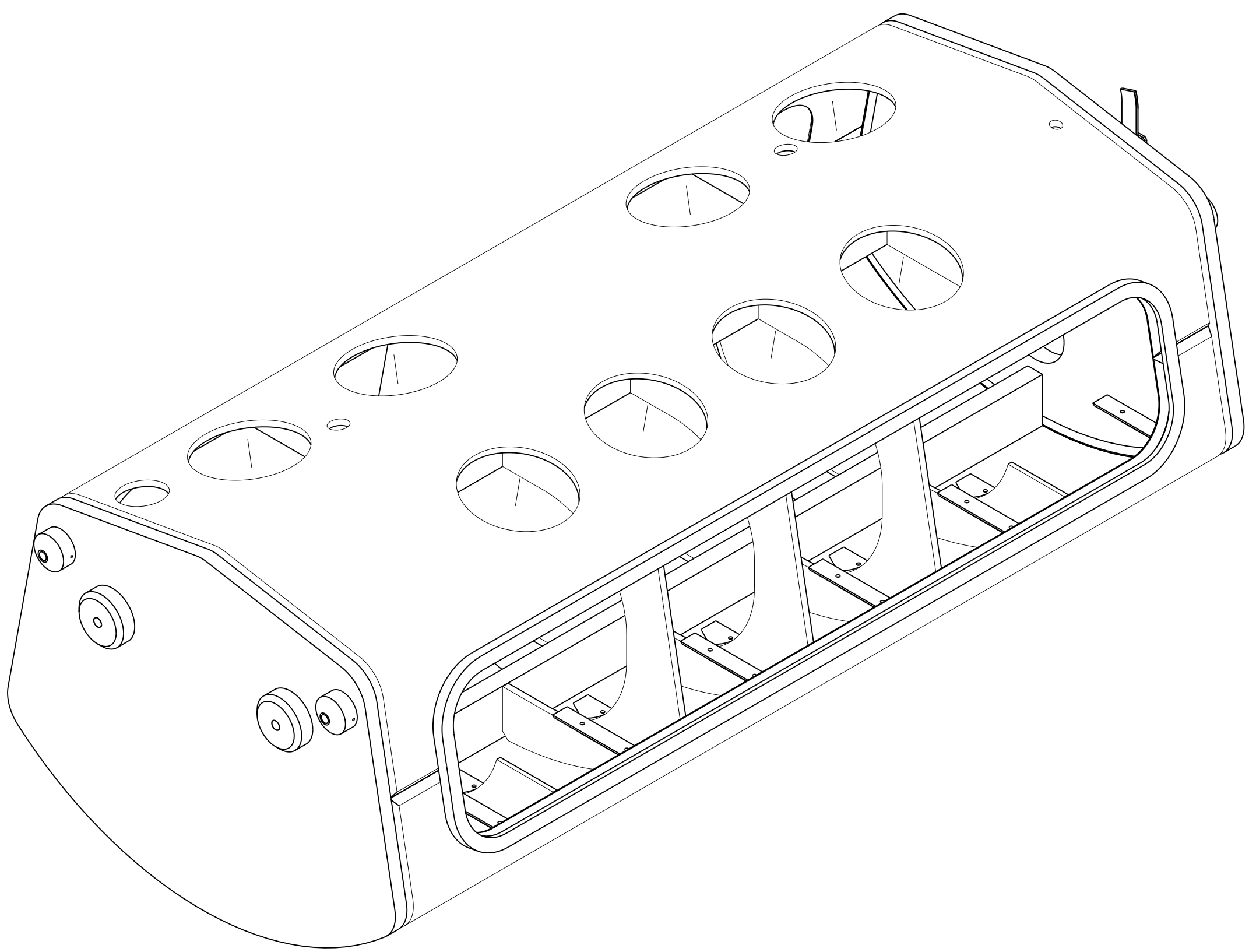
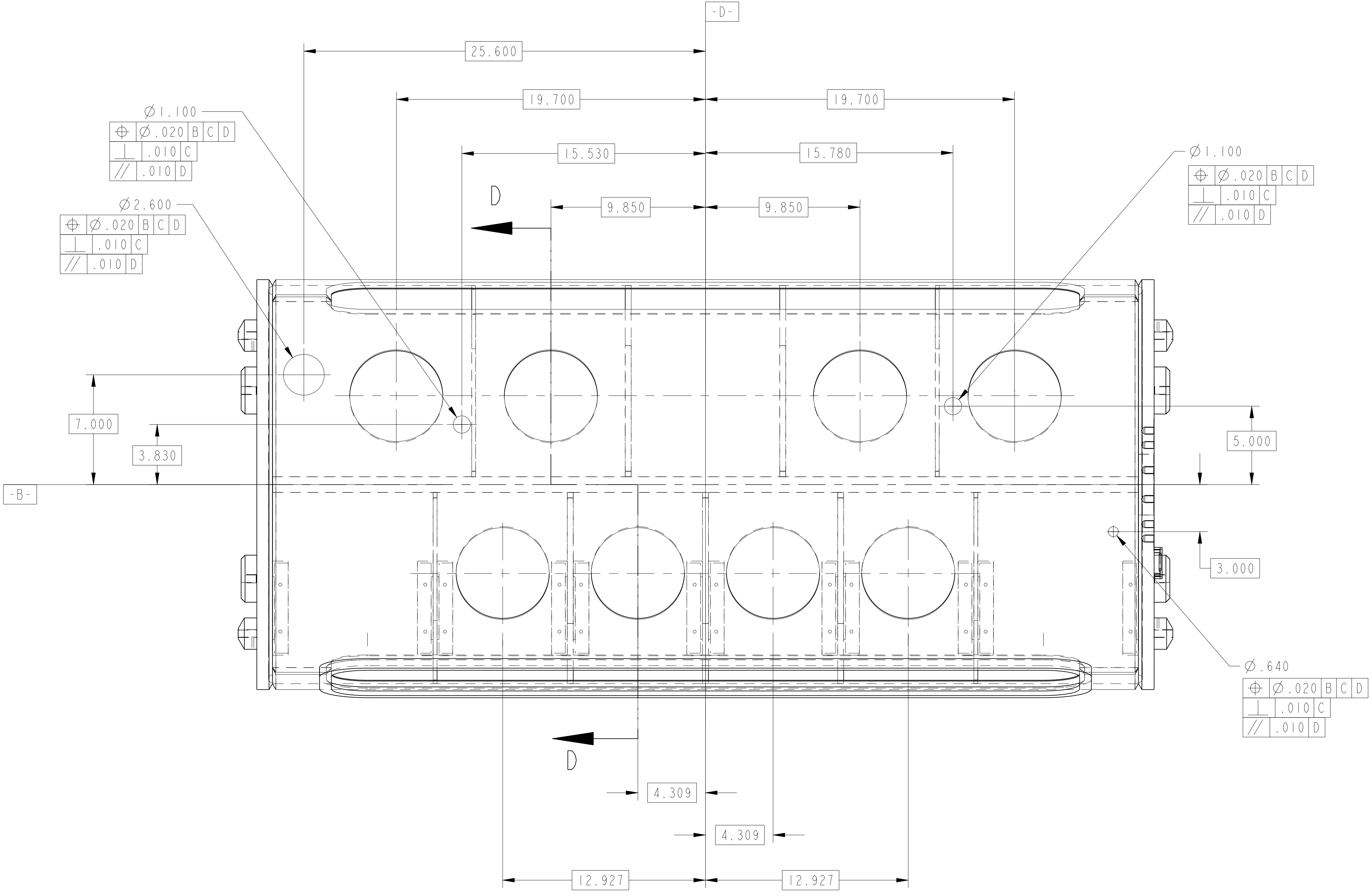
THIRD ANGLE PROJECTION

ERNEST ORLANDO LAWRENCE BERKELEY NATIONAL LABORATORY <small>UNIVERSITY OF CALIFORNIA BERKELEY</small>			
LHC IR FEEDBOX CRYOGENICS LIQUID HELIUM TANK - 8 PORT LEFT			
MICROFILMED:	DRG. TYPE:	SCALE:	1/4
ASSEM	SHOWN ON	SHEET 2 OF 4	
PATENT CLEAR:	DESIGN ACCT. NO.	CATEGORY CODE	DRG. NO.
	Z5LCE2	LH2003	2515756
			A

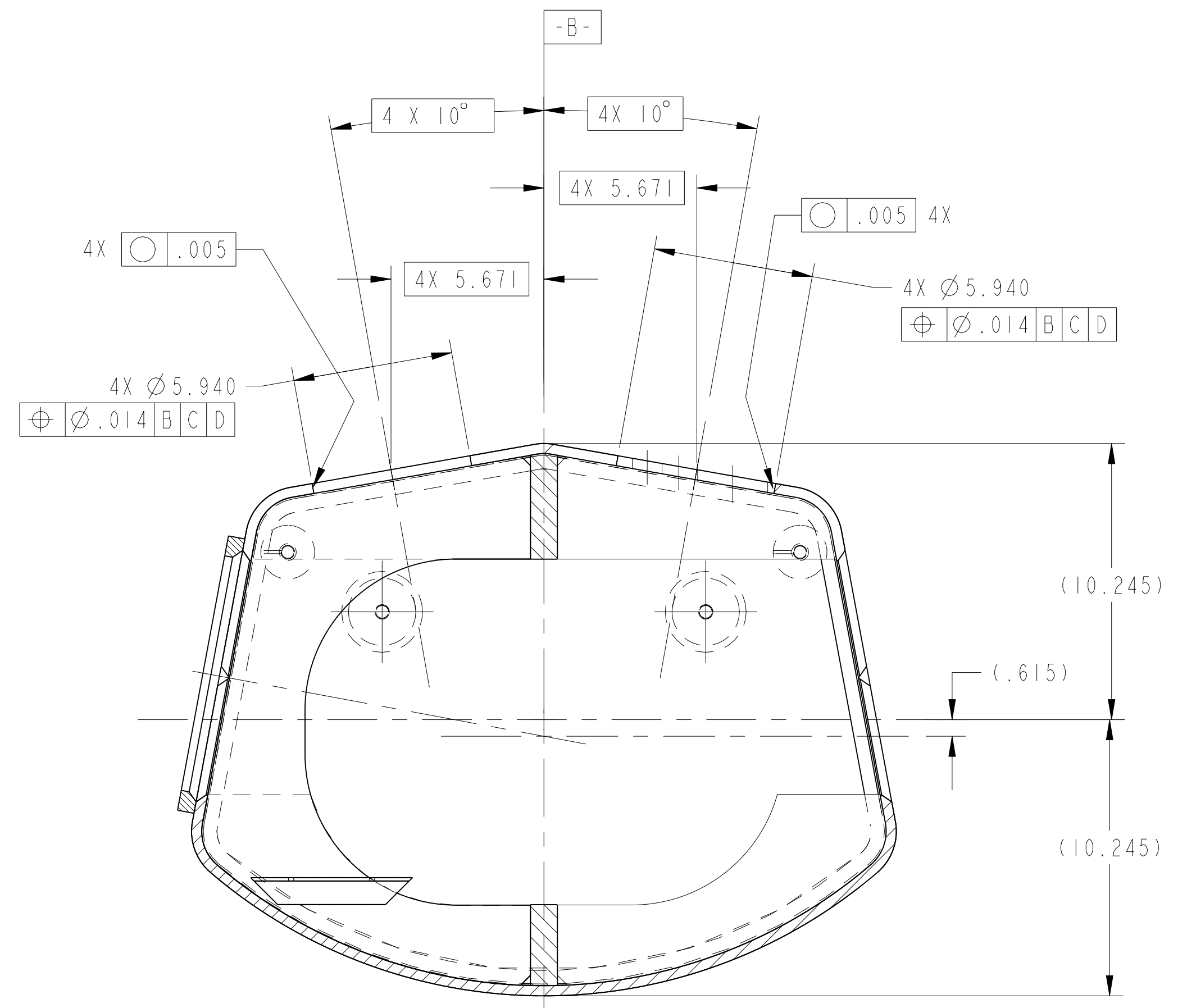
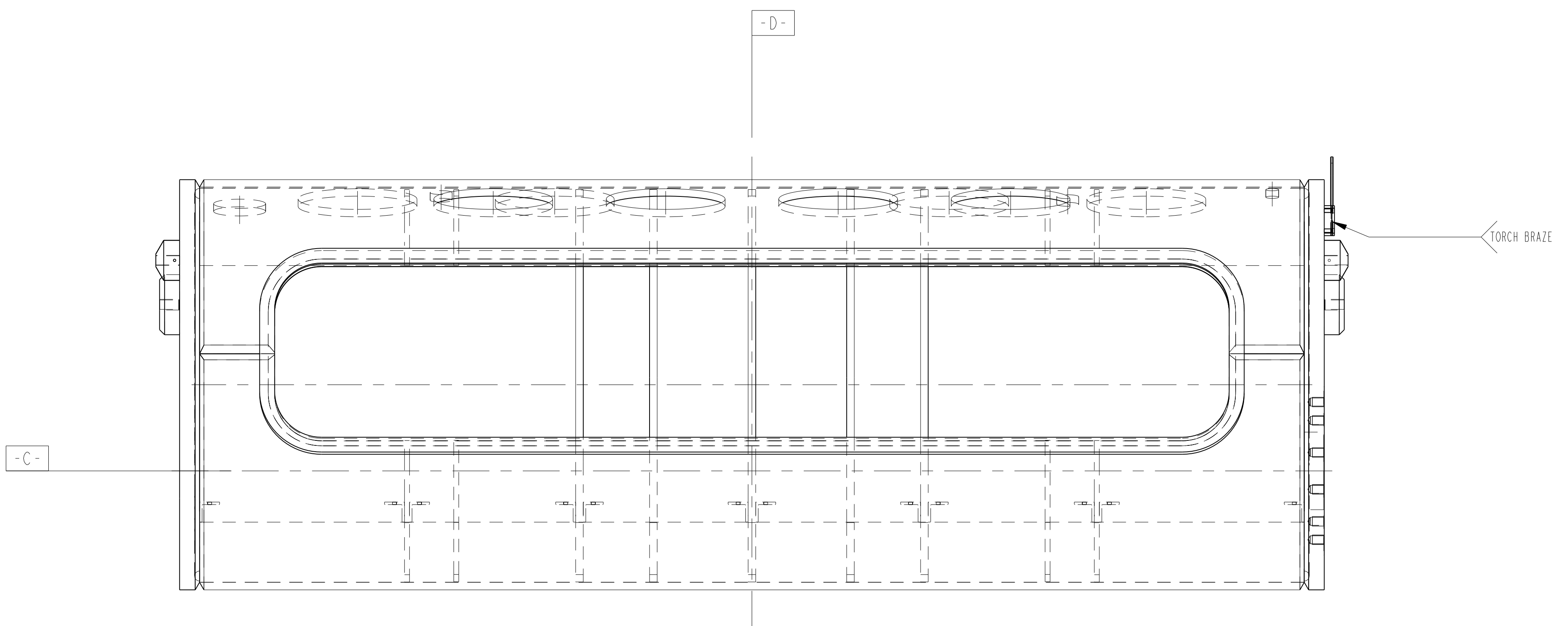
NAME: ARHARRIS OBJECT: 251575.2 DATE: 04-Dec-02 09:50:39

2515756 A 2

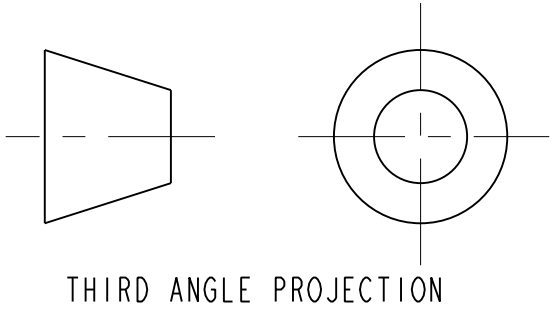
8 7 6 5 4 3 2 1



MACHINED STAGE



SECTION D-D



ERNEST ORLANDO LAWRENCE BERKELEY NATIONAL LABORATORY			
UNIVERSITY OF CALIFORNIA BERKELEY			
LHC IR FEEDBOX CRYogenics			
LIQUID HELIUM TANK - 8 PORT LEFT			
MICROFILMED:	ENG. TYPE	SCALE	1/4
ASSEM	SHOWN ON	SHEET 3 OF 4	
PATENT CLEAR:	REVISION ACCT. NO.	CATEGORY CODE	SIZE
Z5LCE2	LH2003	2515756	A

8 7 6 5 4 3 2 1

NAME: ARHARRIS OBJECT: 2515756_3 DATE: 04-Dec-02 09:50:42

2515756 A 3

8

7

6

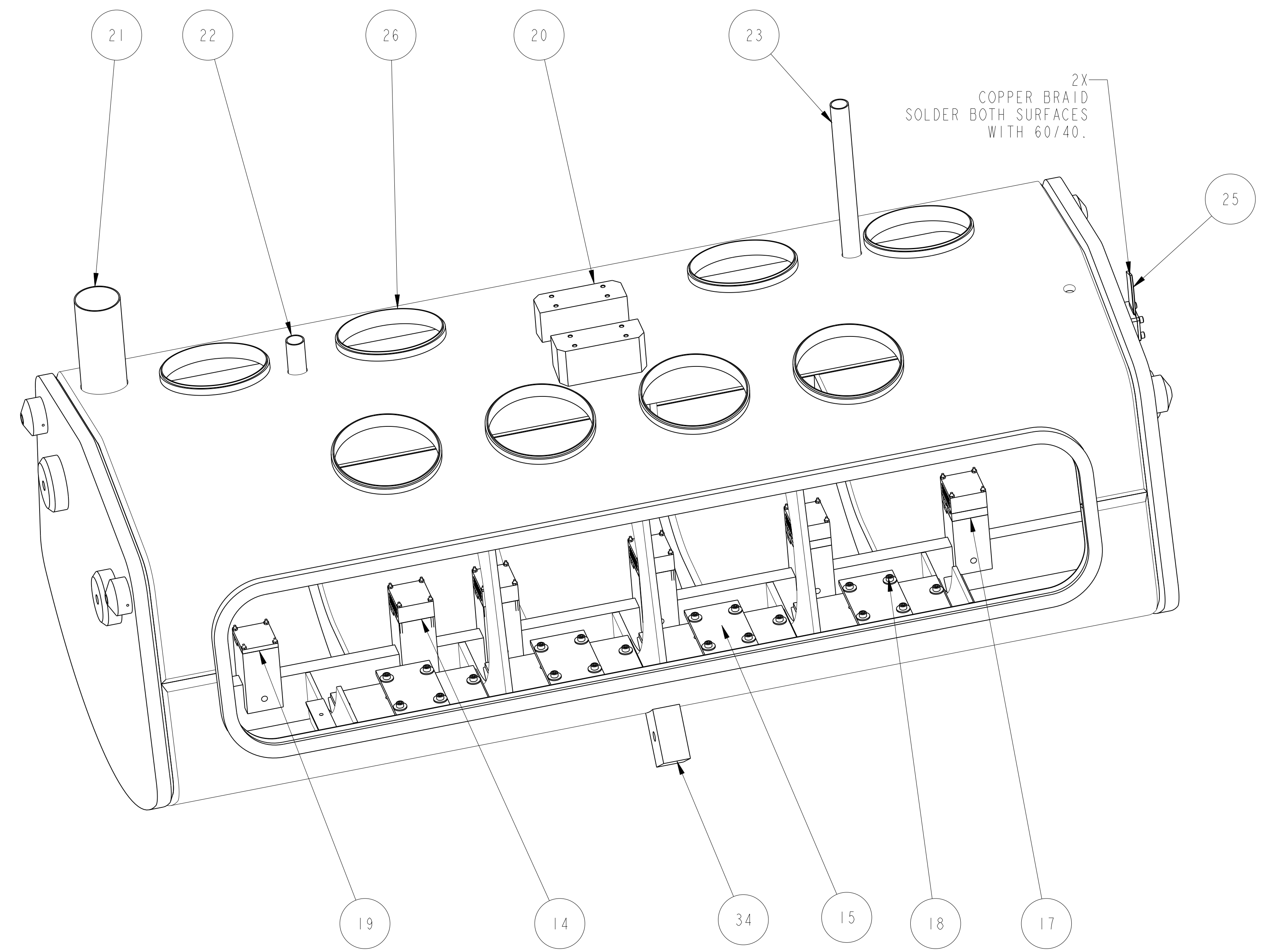
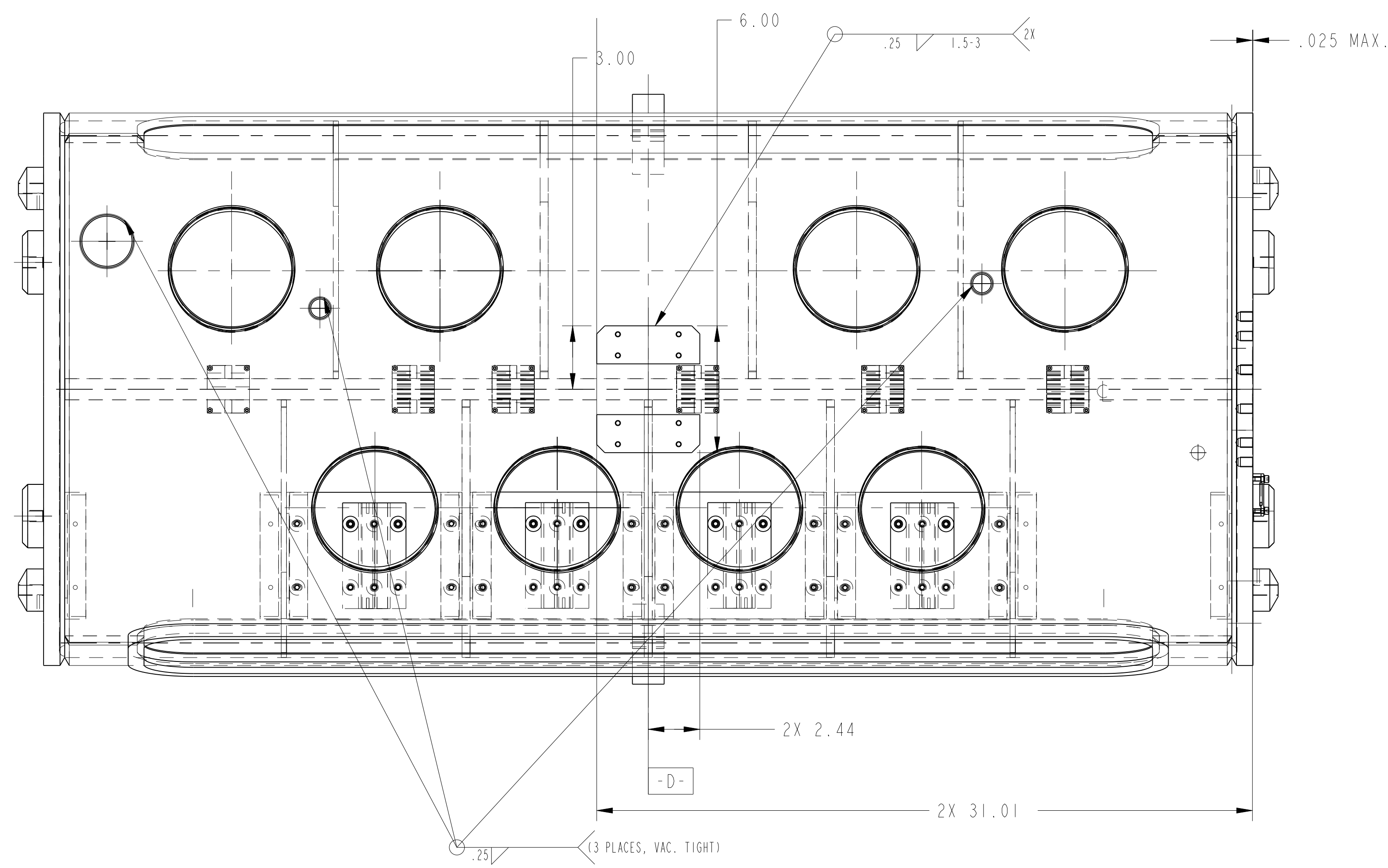
5

4

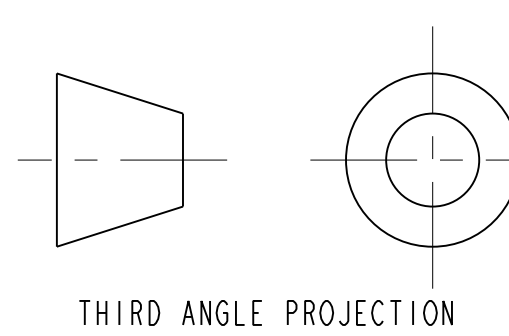
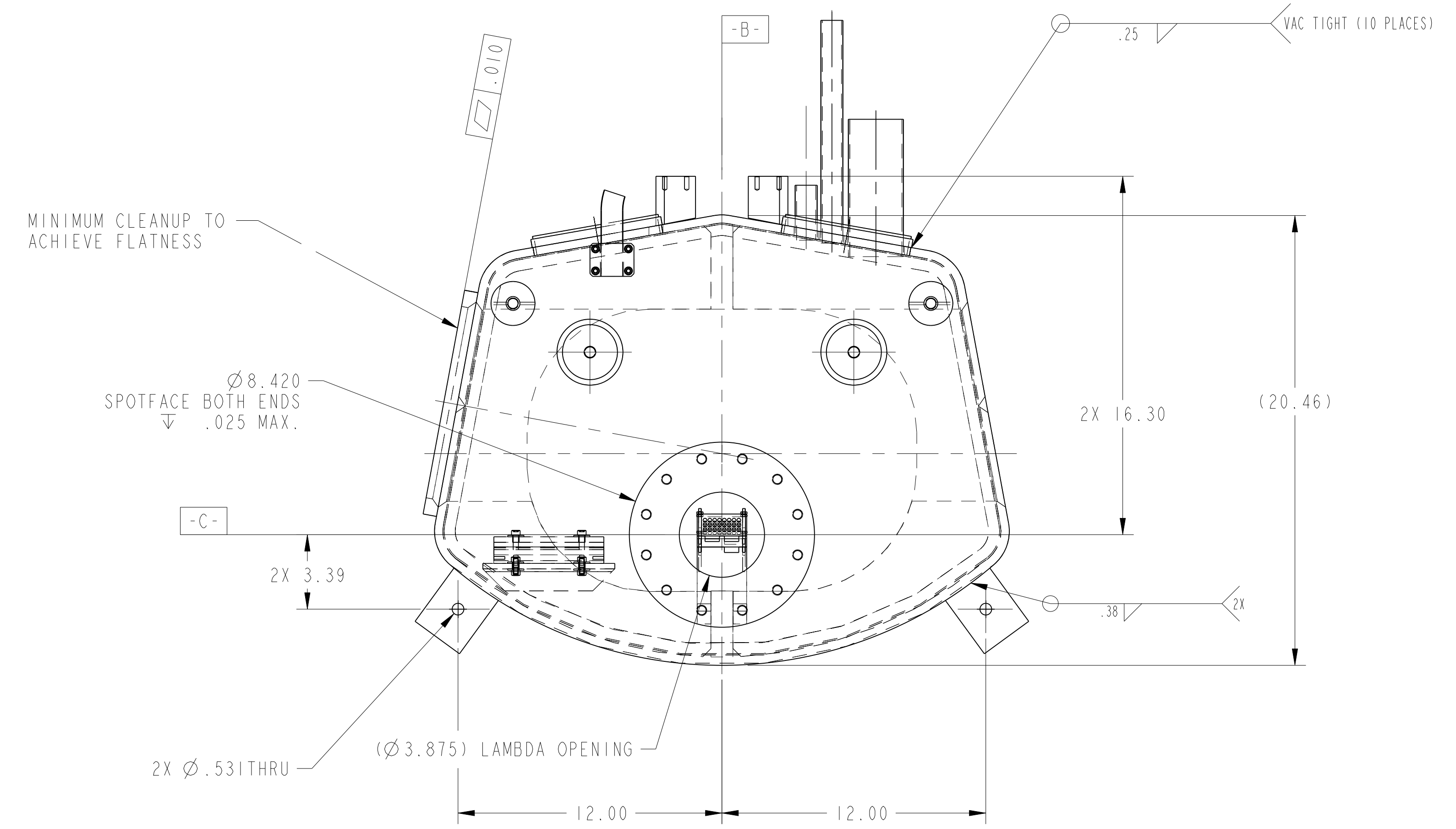
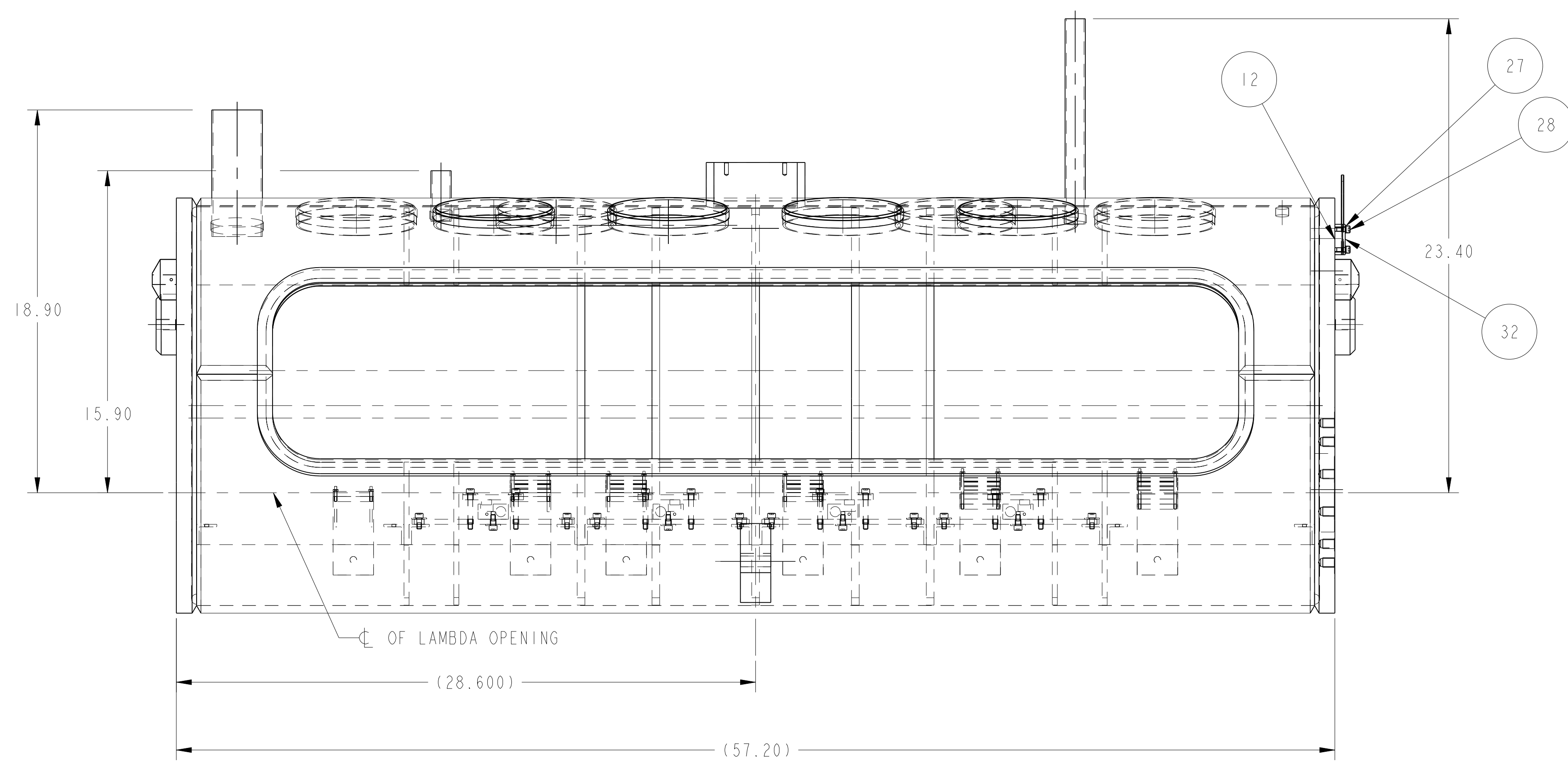
3

2

1



FINAL WELDMENT & ASSEMBLY STAGE



ERNEST ORLANDO LAWRENCE
BERKELEY NATIONAL LABORATORY
UNIVERSITY OF CALIFORNIA BERKELEY

LHC IR FEEDBOX
CRYOGENICS
LIQUID HELIUM TANK - 8 PORT LEFT

DESIGNED BY	SCALE	1/4	DATE	NOV 15 2002
ASSEMBLED BY	REV	1	DATE	NOV 15 2002
CHECKED BY	REV	2	DATE	NOV 15 2002
APPROVED BY	REV	3	DATE	NOV 15 2002
DATE	REV	4	DATE	NOV 15 2002

SHEET 4 OF 4

2515756 A

8

7

6

5

4

3

2

1

2515756 A 4

NAME: ARHARRIS OBJECT: 2515756_4 DATE: 04-Dec-02 09:50:45