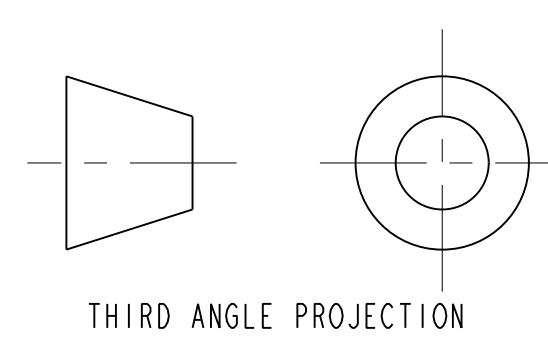
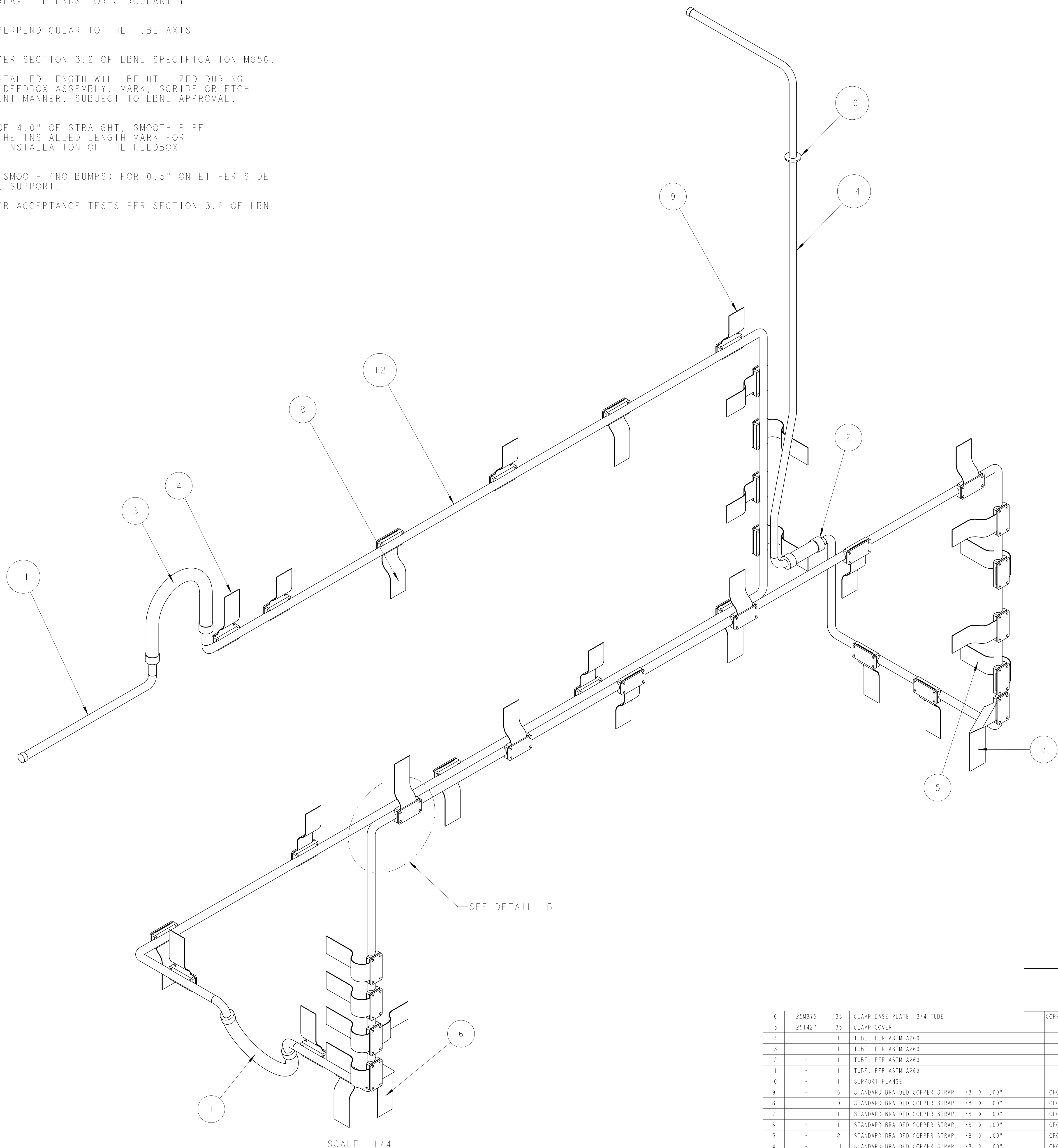
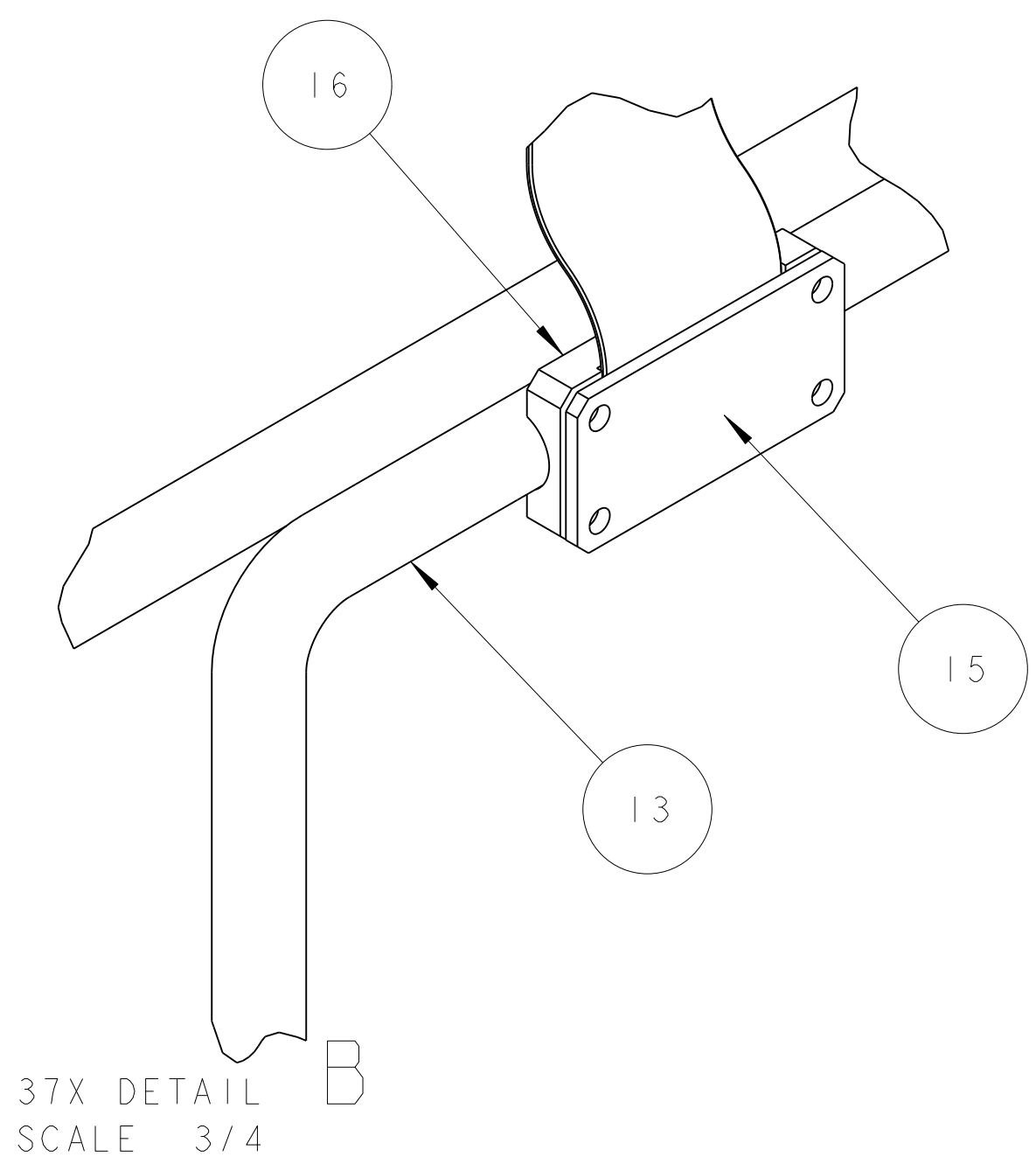


NOTES: (UNLESS OTHERWISE SPECIFIED)

- 1. THIS IS A CRYOGENIC VACUUM COMPONENT.
- 2. WELDING PROCEDURE: PER VENDOR SPECIFICATION WITH LBNL APPROVAL.
- 3. CLEANING PROCEDURE : PER VENDOR SPECIFICATION WITH LBNL APPROVAL.
- 4. PACKAGING AND STORAGE PROCEDURE OF THE COMPONENTS: PER VENDOR SPECIFICATION WITH LBNL APPROVAL.
- 5. DIMENSIONS AND TOLERANCING PER ANSI Y14.5M-1982. UNITS ARE IN INCHES [mm] UNLESS OTHERWISE SPECIFIED.
- 6. USE OF SULFUR OR SILICONE BEARING OILS, LUBRICANTS, OR COOLANTS ARE STRICTLY PROHIBITED.
- 7. USE OF RESIN OR RUBBER BONDED ABRASIVES UNDER POWER IS STRICTLY PROHIBITED. USE VITREOUS BONDED ABRASIVES ONLY.
- 8. VENDOR SUGGESTED CHANGES TO WELD PREPS; SUBJECT TO LBNL APPROVAL.
- 9. FITTINGS MAY BE USED IN PLACE OF BENDS; SUBJECT TO LBNL APPROVAL.
- 10. VENDOR SUGGESTED CHANGES TO TOLERANCES TO FACILITATE FABRICATION OR ASSEMBLY; SUBECT TO LBNL APPROVAL.
- 11. REMOVE ALL THE BURRS AND REAM THE ENDS FOR CIRCULARITY AND CLEAN ENDS.
- 12. TUBE END SURFACE MUST BE PERPENDICULAR TO THE TUBE AXIS WITHIN +/- .010.
- 13. PERFORM ACCEPTANCE TESTS PER SECTION 3.2 OF LBNL SPECIFICATION M856.
- 14. A MARK DESIGNATING THE INSTALLED LENGTH WILL BE UTILIZED DURING FINAL INSTALLATION OF THE DEEDBOX ASSEMBLY. MARK, SCRIBE OR ETCH THIS LOCATION IN A PERMANENT MANNER, SUBJECT TO LBNL APPROVAL, TO AN ACCURACY OF 0.063".
- 15. PROVIDE A MINIMUM LENGTH OF 4.0" OF STRAIGHT, SMOOTH PIPE ON THE INDICATED SIDE OF THE INSTALLED LENGTH MARK FOR PIPE WELDING DURING FINAL INSTALLATION OF THE FEEDBOX ASSEMBLY.
- 16. PIPE MUST BE STRAIGHT AND SMOOTH (NO BUMPS) FOR 0.5" ON EITHER SIDE OF THE CENTER-PLANE OF THE SUPPORT.
- 17. CAP BOTH ENDS OF PIPE AFTER ACCEPTANCE TESTS PER SECTION 3.2 OF LBNL SPECIFICATION M856.



ITEM	PART NO	QTY	DESCRIPTION	MATERIAL
16	25M075	35	CLAMP BASE PLATE, 3/4" TUBE	COPPER, OFHC, C101
15	25142T	35	CLAMP COVER	OFHC, C101
14	-	1	TUBE, PER ASTM A269	SS 304L
13	-	1	TUBE, PER ASTM A269	SS 304L
12	-	1	TUBE, PER ASTM A269	SS 304L
11	-	1	TUBE, PER ASTM A269	SS 304L
10	-	1	SUPPORT FLANGE	SS 304L
9	-	6	STANDARD BRAIDED COPPER STRAP, 1/8" X 1.00"	OFC COPPER BRAID
8	-	10	STANDARD BRAIDED COPPER STRAP, 1/8" X 1.00"	OFC COPPER BRAID
7	-	1	STANDARD BRAIDED COPPER STRAP, 1/8" X 1.00"	OFC COPPER BRAID
6	-	1	STANDARD BRAIDED COPPER STRAP, 1/8" X 1.00"	OFC COPPER BRAID
5	-	8	STANDARD BRAIDED COPPER STRAP, 1/8" X 1.00"	OFC COPPER BRAID
4	-	1	STANDARD BRAIDED COPPER STRAP, 1/8" X 1.00"	OFC COPPER BRAID
3	-	1	BRAIDED FLEX HOSE, .625" ID X 3/4" STR 17MM ELBOW	SS 309 SERIES
2	-	1	BRAIDED FLEX HOSE, .625" ID X 3/4" STR 17MM ELBOW	SS 309 SERIES
1	-	1	BRAIDED FLEX HOSE, .625" ID X 3/4" ELBOW WELD ENDS	SS 309 SERIES

REV	DWG	CHK	ZONE	DATE	INITIALS	RELEASE	CHANGES
A	ARH	SPV		2-31-02		INITIAL RELEASE	

UNLESS OTHERWISE SPECIFIED
 X.X ± 0.1 FRACTION ± 1/64
 X.XX ± 0.03 ANGLES ± 1.0°
 X.XXX ± 0.010 FINISH
 DO NOT SCALE PRINT
 TOLERANCES UNLESS OTHERWISE SPECIFIED
 CHAMFER ENDS OF ALL SCREW THREADS 30°
 BREAK EDGES 1:16 MAX ON MACHINED PARTS
 REMOVE BURRS, WELD SPATTER & LOOSE SCALE
 IN ACCORDANCE WITH ASME B1.9.1 & B.8.1

SHOP ORDERS

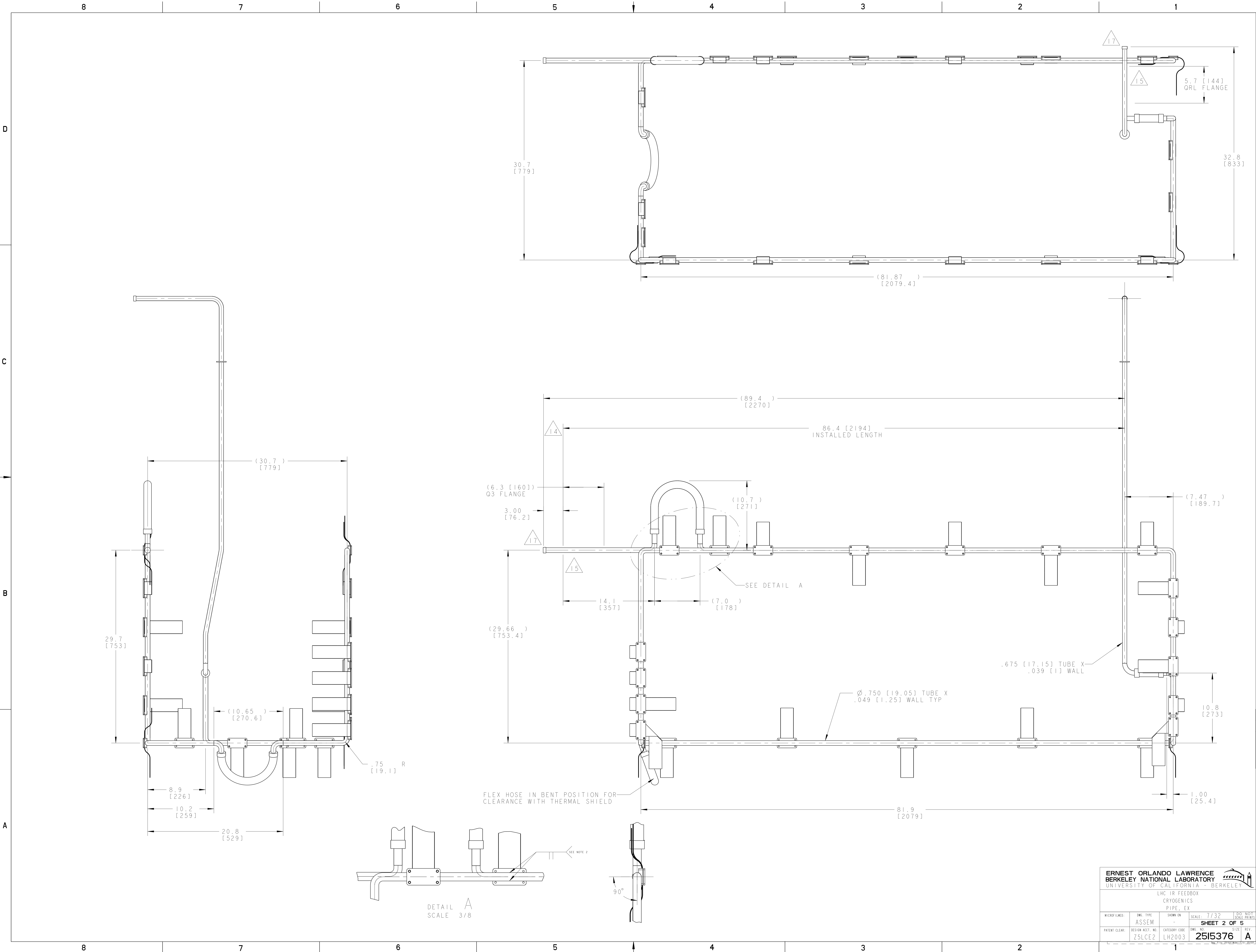
ERNEST ORLANDO LAWRENCE BERKELEY NATIONAL LABORATORY
 UNIVERSITY OF CALIFORNIA BERKELEY

LHC IR FEEDBOX
 CRYOGENICS
 PIPE, EX

SCALE: 7/32
 SHEET 1 OF 5

DATE: 29-Jul-02
 DATE: 10-31-02
 DATE: 4-02-02

NAME: ARHARRIS OBJECT: 2515376 DATE: 26-Nov-02 09:55:04



ERNEST ORLANDO LAWRENCE
BERKELEY NATIONAL LABORATORY
 UNIVERSITY OF CALIFORNIA BERKELEY

LHC IR FEEDBOX
 CRYOGENICS
 PIPE, EX

MICROFILMED:	ENG. TYPE	SHOW ON	SCALE: 7/32	DO NOT SCALE PRINTS
	ASSEM			
PATENT CLEAR:	DESIGN ACCT. NO.	CATEGORY CODE	ENG. NO.	SIZE
	Z5LCE2	LH2003	2515376	A

SHEET 2 OF 5

2515376 A 2

8

7

6

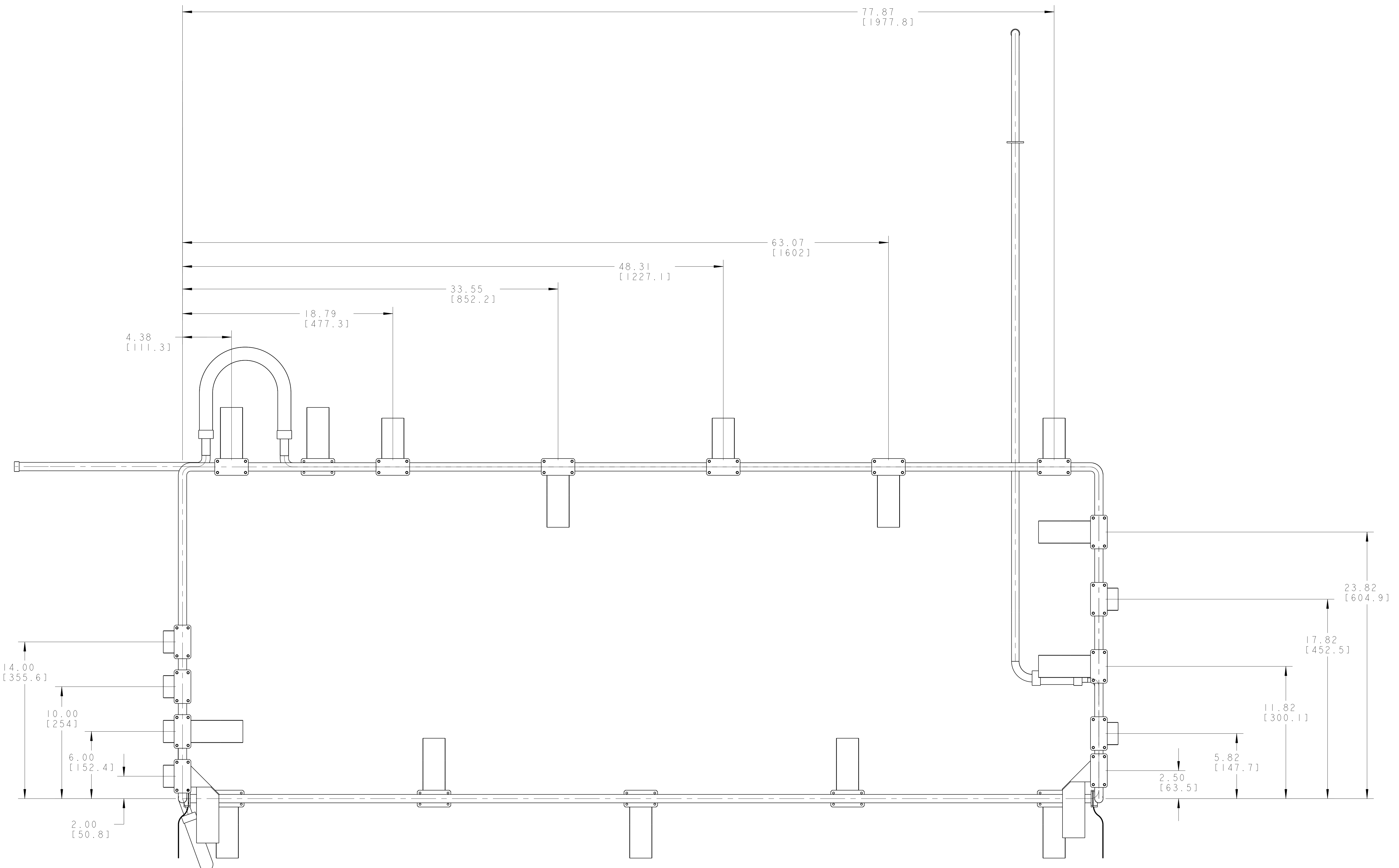
5

4

3

2

1



RIGHT SIDE VIEW SCALE 1/4

ERNEST ORLANDO LAWRENCE BERKELEY NATIONAL LABORATORY <small>UNIVERSITY OF CALIFORNIA BERKELEY</small>			
LHC IR FEEDBOX CRYOGENICS PIPE, EX			
MICROFILMED:	DWG. TYPE:	SHOW ON:	SCALE: 7/32
	ASSEM		[DO NOT SCALE PRINTS]
PATENT CLEAR:	REVISION ACCT. NO:	CATEGORY CODE:	DWG. NO. 2515376
	Z5LCE2	LH2003	SIZE: A
			SHEET 3 OF 5 REV.

2515376 A 3

NAME: ARHARRIS OBJECT: 2515376 DATE: 26-Nov-02 09:55:06

8

7

6

5

4

3

2

1

8

7

6

5

4

3

2

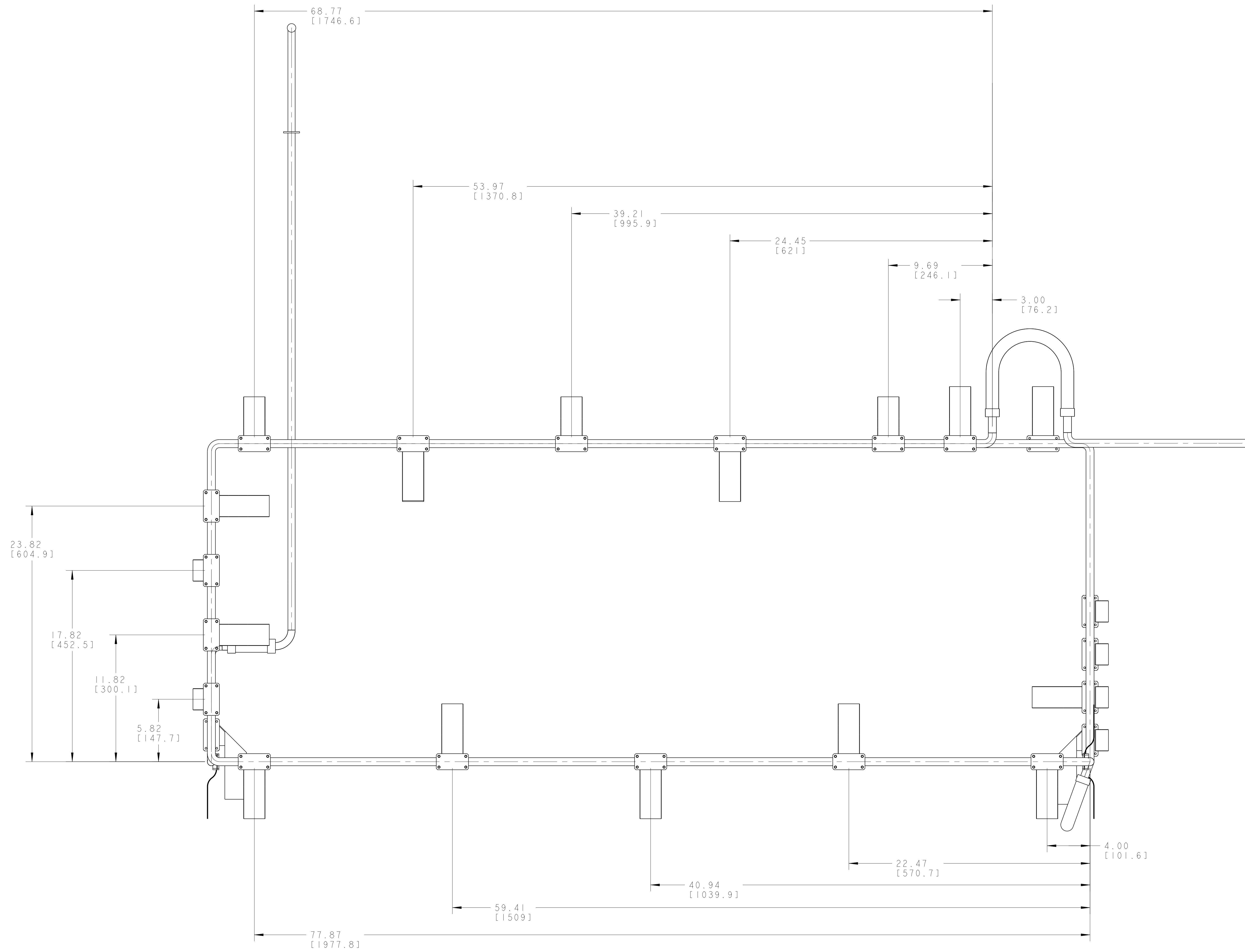
1

D

C

B

A



LEFT SIDE VIEW SCALE 1/4

ERNEST ORLANDO LAWRENCE BERKELEY NATIONAL LABORATORY <small>UNIVERSITY OF CALIFORNIA BERKELEY</small>			
LHC IR FEEDBOX CRYOGENICS PIPE, EX			
MICROFILMED:	DWG. TYPE	SHOW ON	SCALE
	ASSEM		7/32
PATENT CLEAR:	REVISION ACCT. NO.	CATEGORY CODE	DWG. NO.
	Z5LC2	LH2003	2515376
		SIZE	REV.
		A	5

2515376 A 4

8

7

6

5

4

3

2

1

A

B

C

D

NAME: ARHARRIS OBJECT: 2515376_4 DATE: 26-Nov-02 09:55:07

8

7

6

5

4

3

2

1

D

C

B

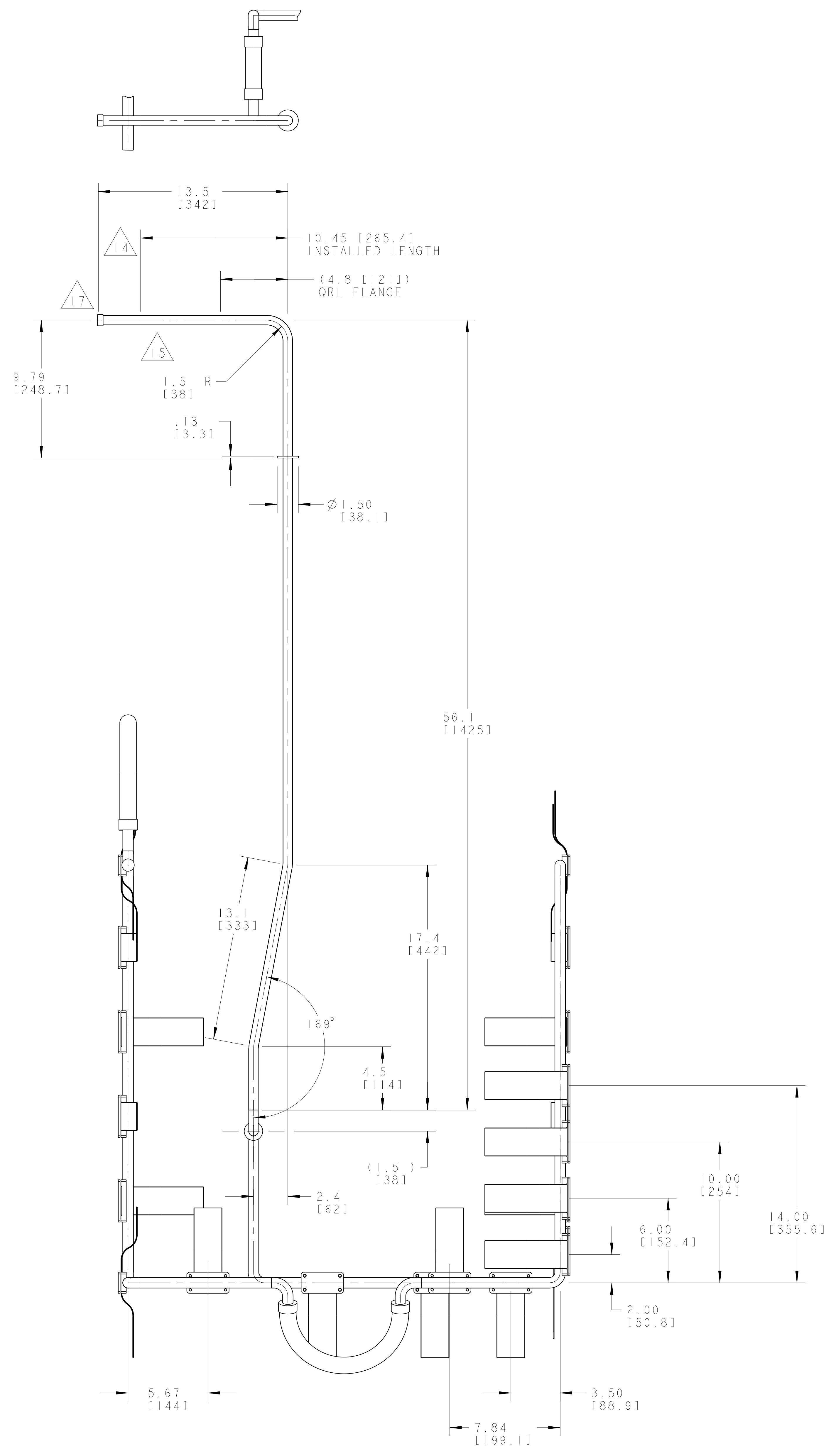
A

D

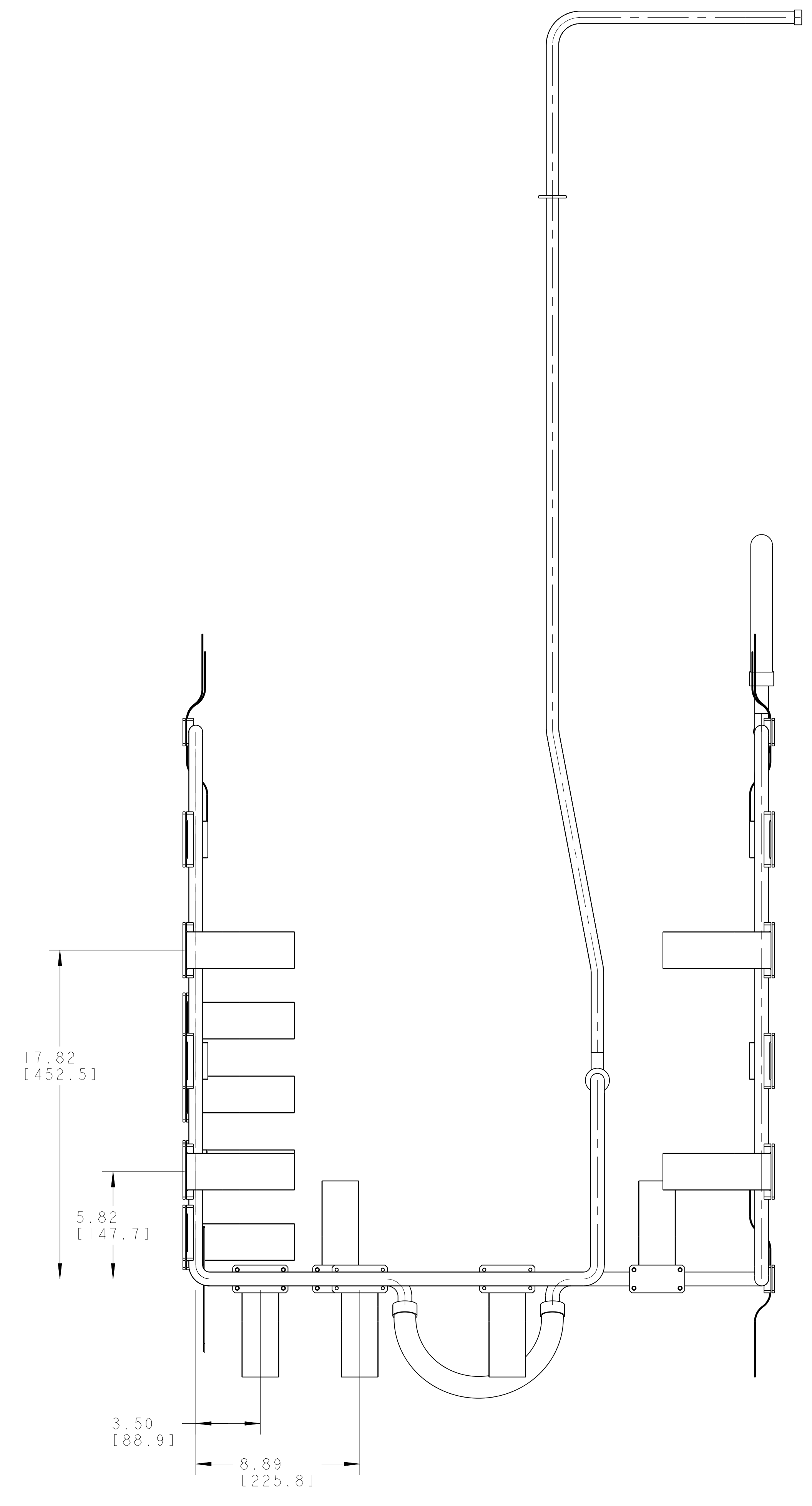
C

B

A



FRONT VIEW SCALE 1/4



REAR VIEW SCALE 1/4

8

7

6

5

4

3

2

1

ERNEST ORLANDO LAWRENCE BERKELEY NATIONAL LABORATORY <small>UNIVERSITY OF CALIFORNIA BERKELEY</small>			
LHC IR FEEDBOX CRYOGENICS PIPE, EX			
MICROFILMED:	DWG. TYPE:	SHOW ON:	SCALE: 7/32
	ASSEM		[DO NOT SCALE PRINTS]
PATENT CLEAR:	REVISION NO.:	CATEGORY CODE:	DWG. NO.:
	Z5LCE2	LH2003	2515376
			SIZE: A
			REV.:
			5

2515376 A 15

NAME: ARHARRIS OBJECT: 2515376 DATE: 26-Nov-02 09:55:08