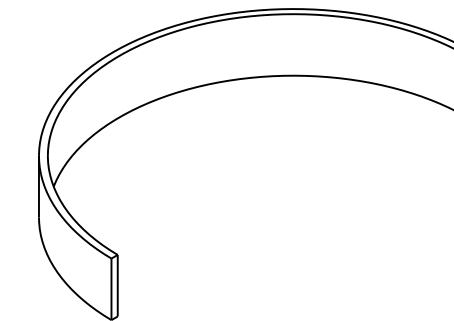
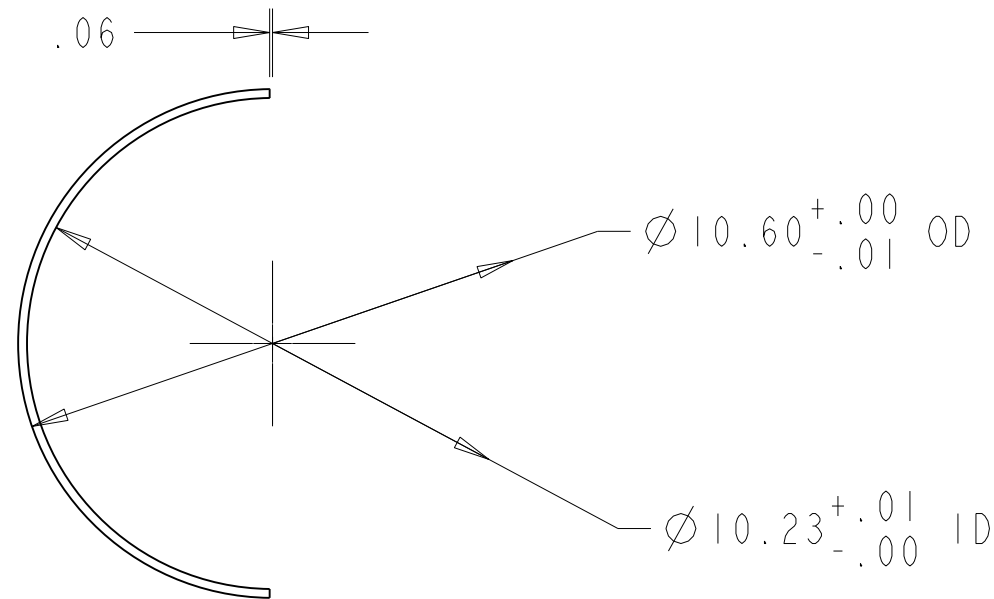
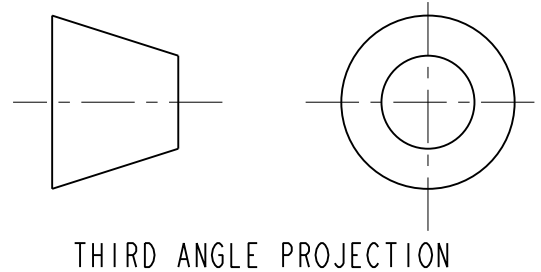
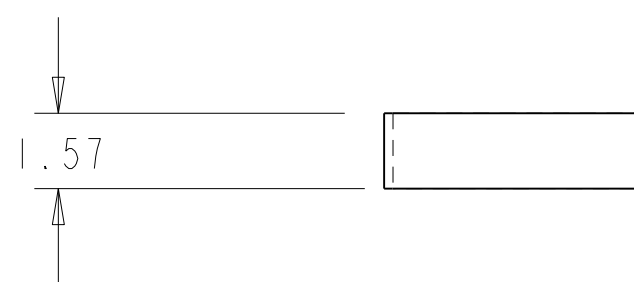


| DESCRIPTION  | MATERIAL | MAT. LOCATION |
|--------------|----------|---------------|
| PIPE, HALVED | NEMA G10 | -             |




NOTES: (UNLESS OTHERWISE SPECIFIED)

- THIS IS A CRYOGENIC VACUUM COMPONENT.
- CLEANING PROCEDURE : PER VENDOR SPECIFICATION WITH LBNL APPROVAL.
- PACKAGING AND STORAGE PROCEDURE OF THE COMPONENTS: PER VENDOR SPECIFICATION WITH LBNL APPROVAL.
- DIMENSIONS AND TOLERANCING PER ANSI Y14.5M-1982. UNITS ARE IN INCHES UNLESS OTHERWISE SPECIFIED.
- USE OF SULFUR OR SILICONE BEARING OILS, LUBRICANTS, OR COOLANTS ARE STRICTLY PROHIBITED.
- USE OF RESIN OR RUBBER BONDED ABRASIVES UNDER POWER IS STRICTLY PROHIBITED. USE VITREOUS BONDED ABRASIVES ONLY.



THIRD ANGLE PROJECTION

|     |     |     |      |      |          |                 |                                                  |  |                           |  |                  |  |                                                                                                                                                             |  |                                     |  |
|-----|-----|-----|------|------|----------|-----------------|--------------------------------------------------|--|---------------------------|--|------------------|--|-------------------------------------------------------------------------------------------------------------------------------------------------------------|--|-------------------------------------|--|
|     |     |     |      |      |          |                 | UNLESS OTHERWISE SPECIFIED                       |  | <b>SHOP ORDERS</b>        |  | SER NO. -        |  | <b>ERNEST ORLANDO LAWRENCE</b><br><b>BERKELEY NATIONAL LABORATORY</b>  |  |                                     |  |
|     |     |     |      |      |          |                 | TOLERANCES                                       |  | ACCT NO.                  |  | NO. RECD         |  | DATE ISSD                                                                                                                                                   |  | UNIVERSITY OF CALIFORNIA - BERKELEY |  |
|     |     |     |      |      |          |                 | X.X ± 0.1                                        |  | FRAC. ± 1/64              |  | DATE RECD        |  | DATE RECD                                                                                                                                                   |  | LHC IR FEEDBOX                      |  |
|     |     |     |      |      |          |                 | X.XX ± 0.03                                      |  | Angles ± 1.00°            |  | SURFACE TREATMT  |  | MIA (Legal)                                                                                                                                                 |  | CRYOGENICS                          |  |
|     |     |     |      |      |          |                 | X.XXX ± 0.010                                    |  | FINISH $\sqrt{125}$ (µin) |  | IDENT METHOD TAG |  | MICROFILMED:                                                                                                                                                |  | DWG. TYPE PART                      |  |
|     |     |     |      |      |          |                 | DO NOT SCALE PRINT                               |  | PROJECT NUMBER            |  | PROJECT NAME     |  | SHOWN ON -                                                                                                                                                  |  | SCALE: 0.250                        |  |
|     |     |     |      |      |          |                 | THREADS ARE CLASS 2                              |  | PROJECT NAME              |  | N/A              |  | PATENT CLEAR:                                                                                                                                               |  | DO NOT SCALE PRINTS                 |  |
|     |     |     |      |      |          |                 | CHAMFER ENDS OF ALL SCREW TRENDS 30°             |  | N/A                       |  | N/A              |  | DESIGN ACCT. NO. Z5LCE3                                                                                                                                     |  | CATEGORY CODE LH2003                |  |
|     |     |     |      |      |          |                 | CUT ROUND, 1.5 THREAD RELIEF ON MACHINED THREADS |  | DWG BY R LA MANTIA        |  | DATE 24-Jul-02   |  | DWG. NO. 25i4503                                                                                                                                            |  | SIZE A                              |  |
|     |     |     |      |      |          |                 | BREAK EDGES .016 MAX. ON MACHINED WORK           |  | CHK BY S.Virostek         |  | DATE 15-Nov-02   |  | REV.                                                                                                                                                        |  | SHEET 1 OF 1                        |  |
|     |     |     |      |      |          |                 | REMOVE BURRS, WELD SPLATTER & LOOSE SCALE        |  | APR BY OSHATZ             |  | DATE 19-Sep-02   |  | REV.                                                                                                                                                        |  | 25i4503 A                           |  |
|     |     |     |      |      |          |                 | IN ACCORDANCE WITH ASME Y14.5M & B46.1           |  |                           |  |                  |  |                                                                                                                                                             |  |                                     |  |
| A   | RLM | SPV |      |      | 11-15-02 | INITIAL RELEASE |                                                  |  |                           |  |                  |  |                                                                                                                                                             |  |                                     |  |
| REV | DWG | CHK | ZONE | DATE | CHANGES  |                 |                                                  |  |                           |  |                  |  |                                                                                                                                                             |  |                                     |  |

DWG. NO. 25i4503 REV. A 1

REV. 11/21/02 J. K. OSHATZ

Dwg. Title: 25i4503 Mod#1 File: 25i4503