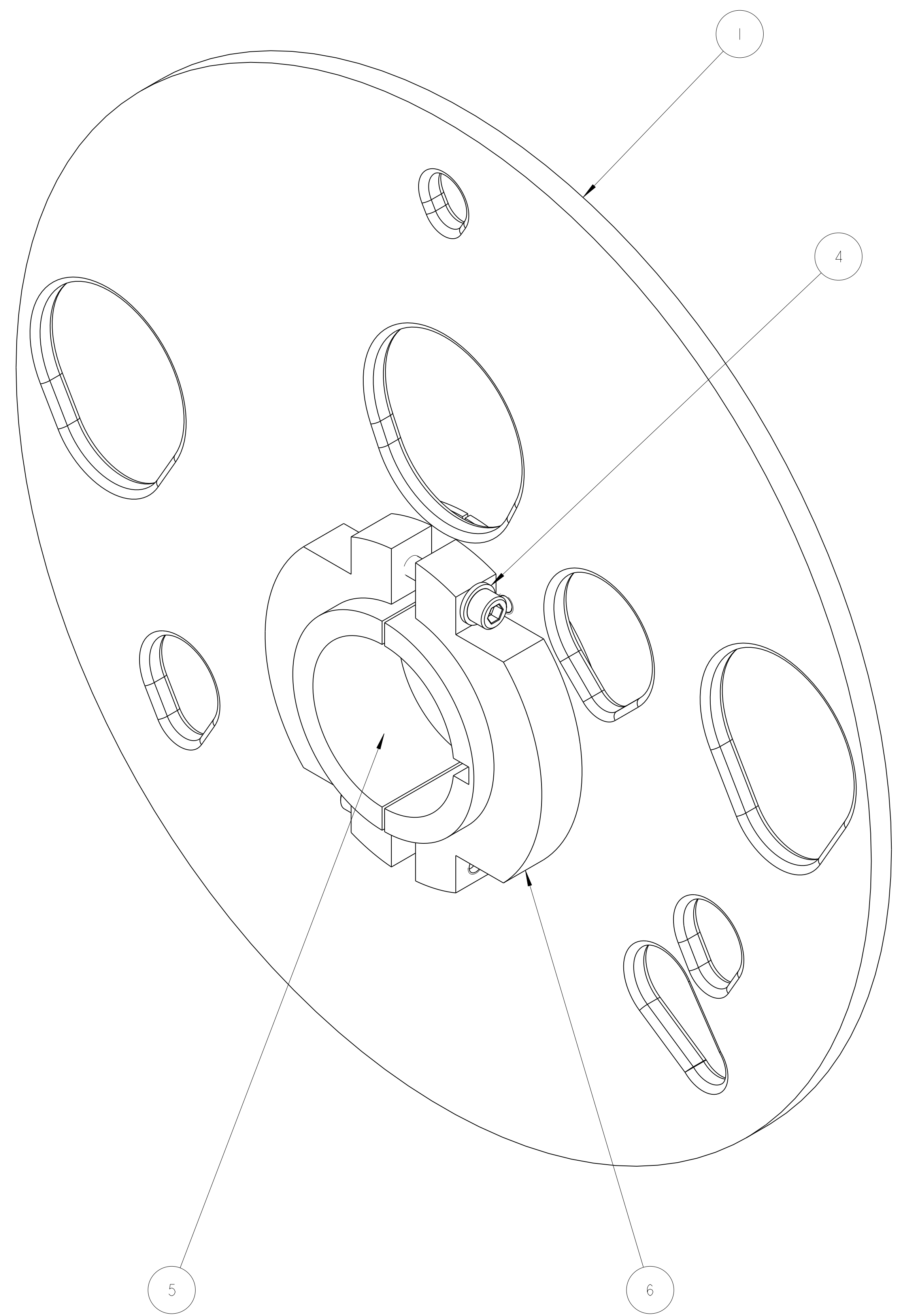
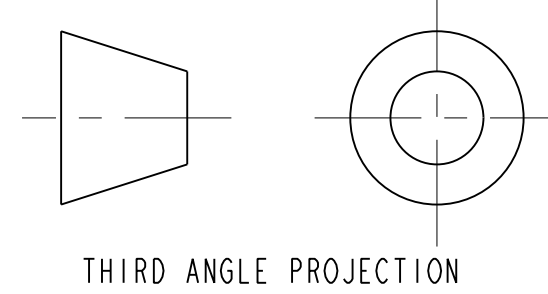


SECTION A - A



- NOTES: UNLESS OTHERWISE SPECIFIED,
- DIMENSIONS AND TOLERANCING PER ANSI Y14.5M-1982 UNITS ARE IN INCHES UNLESS OTHERWISE SPECIFIED.
 - PART IS PARALLEL TO PLANE OF REINFORCEMENT,
 - PROTECT FINISHED PART BY BAGGING OR SIMILAR METHOD TO PROTECT AND MAINTAIN CLEANLINESS DURING SHIPMENT AND STORAGE.
 - TAG WITH DRAWING NUMBER



REV	DWG	CHK	ZONE	DATE	DESCRIPTION
A	MJK	SPV		11-22-02	INITIAL RELEASE
					CHANGES

ITEM	PART NO	QTY	DESCRIPTION	MATERIAL
6	25MB01	2	SPLIT CLAMP	SS 304L
5	25MB00	1	SPLIT HUB	SS 304L
4	-	2	WASHER, M10x1.5, 65mm LG, SILVER PLATED	SS 18-8
3	-	2	SCH, M10x1.5, 16mm LG, SILVER PLATED	SS 18-8
2	-	6	SCH, M10x1.5, 16mm LG, SILVER PLATED	SS 18-8
1	-	1	SUPPORT PLATE	NEMA G10

UNLESS OTHERWISE SPECIFIED
 TOLERANCES: X.X ± 0.1 FRACTION ± 1/64
 X.XX ± 0.02 ANGLES ± 1.00°
 X.XXX ± 0.005 FINISH: 12.5 μm
 DO NOT SCALE PRINT
 DIMENSIONS ARE CLASS 2
 CHAMFER ENDS OF ALL SCREW THREADS 30°
 CUT ROUNDS, 1.5 THREAD RELIEF ON MACHINED THREADS
 BREAK EDGES .156 MAX. ON MACHINED WORK
 REMOVE BURRS, WELD SPLICED & LOOSE SCALE
 IN ACCORDANCE WITH ASME Y14.3M & B.61.1

SHOP ORDERS
 SET -
 NO. -
 DATE -
 REGR -
 DATE -
 REGR -

ERNEST ORLANDO LAWRENCE
 BERKELEY NATIONAL LABORATORY
 UNIVERSITY OF CALIFORNIA BERKELEY

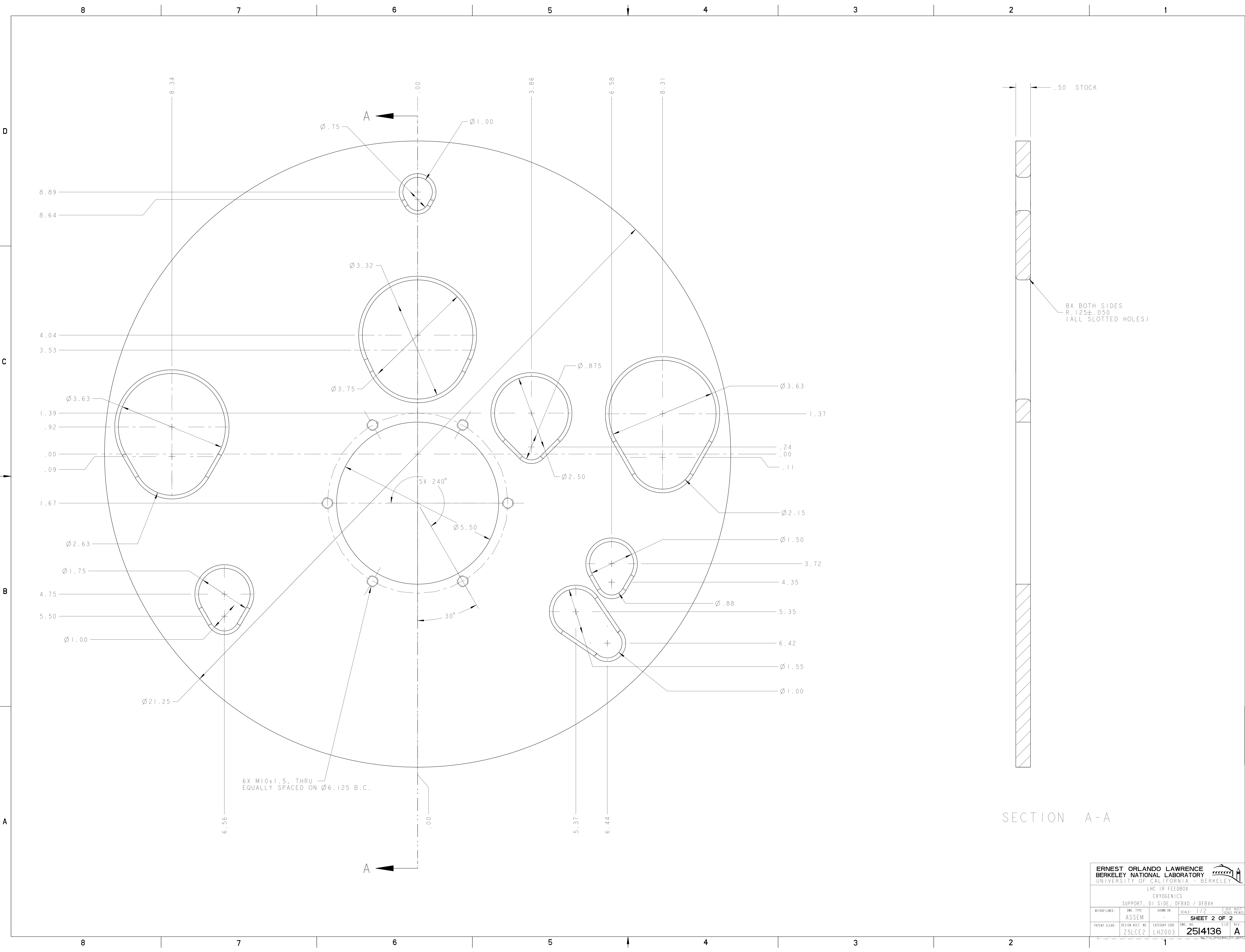
LHC IR FEEDBOX
 CRYOGENICS
 SUPPORT, DI SIDE, DFBXD / DFBXH
 ASSEM

MICROFILMED: DWG. TYPE: SHOW ON SCALE: 3/4
 DATE: 18-July-02
 FILED: S. Virostken DATE: 11/22/02
 APP: DSHWATZ DATE: 9/18/02

PATENT CLEAR: DESIGN ACCT. NO. CATEGORY CODE DWG. NO. SHEET 1 OF 2
 Z5LCE2 LH2003 2514136

DO NOT SCALE PRINTS

NAME: ARHARRIS OBJECT: 2514136 DATE: 26-Nov-02 11:16:21



SECTION A-A

ERNEST ORLANDO LAWRENCE BERKELEY NATIONAL LABORATORY <small>UNIVERSITY OF CALIFORNIA BERKELEY</small>			
LHC IR FEEDBOX CRYOGENICS			
SUPPORT, DI SIDE, DFBXD / DFBXH			
MICROFILMED:	ENG. TYPE:	SHOW ON:	SCALE: 1/2
	ASSEM		
SHEET 2 OF 2		I DO NOT CHECK PRINTS	
PATENT CLEAR:	DESIGN ACCT. NO:	CATEGORY CODE:	ENG. NO. REV.
	Z5LC62	LH2003	2514136 A

2514136 A 2