

8

7

6

5

4

3

2

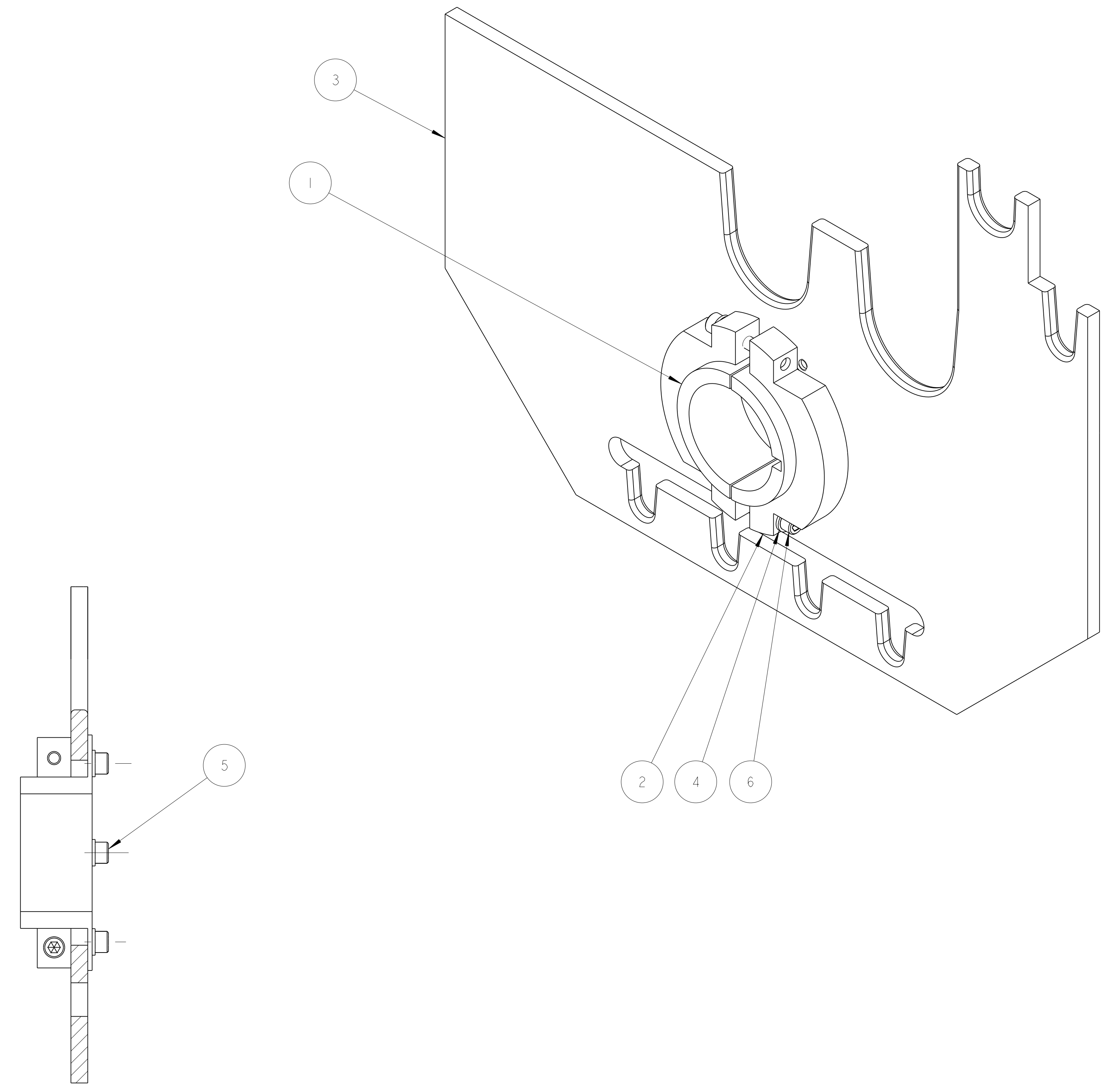
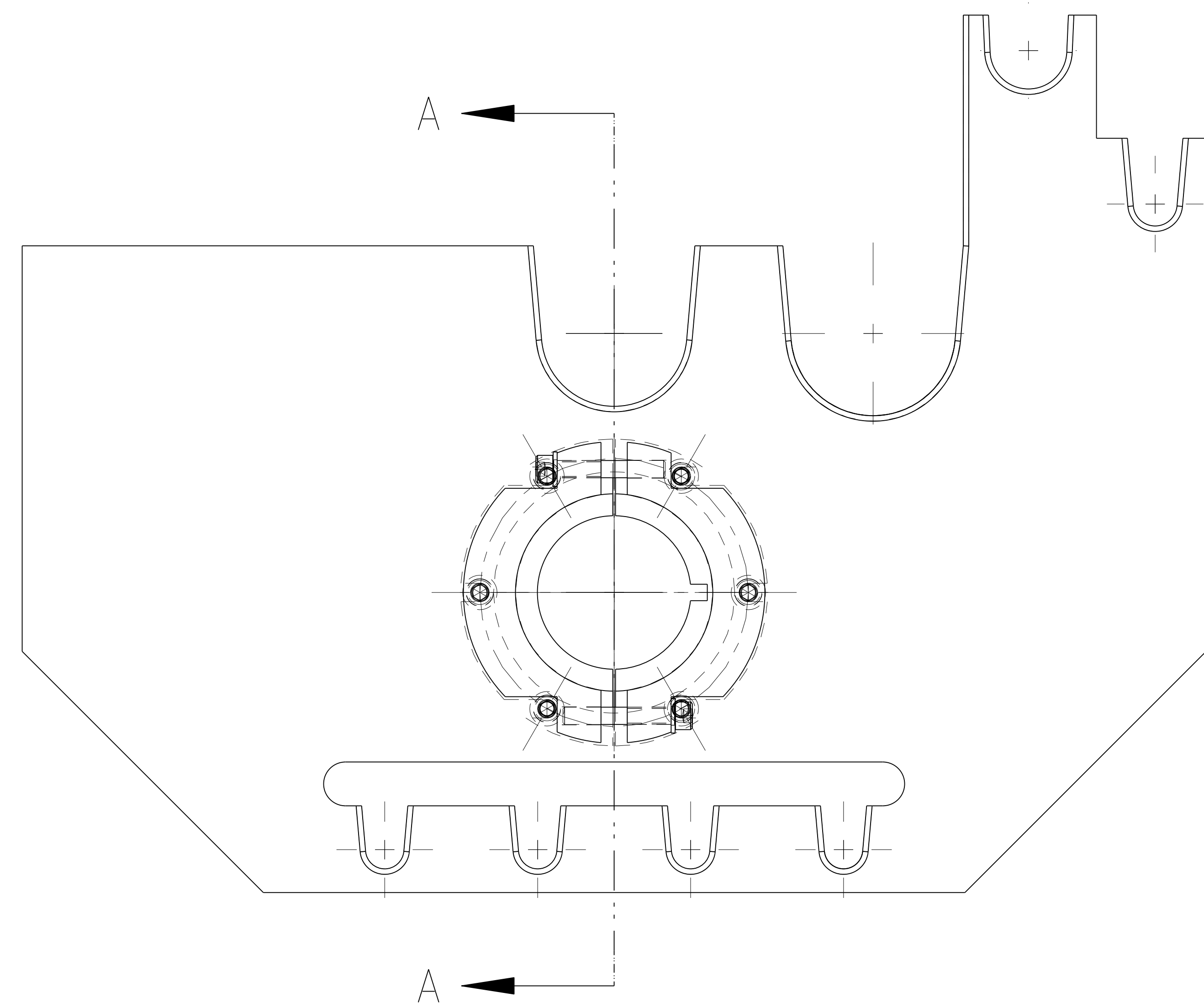
1

D

C

B

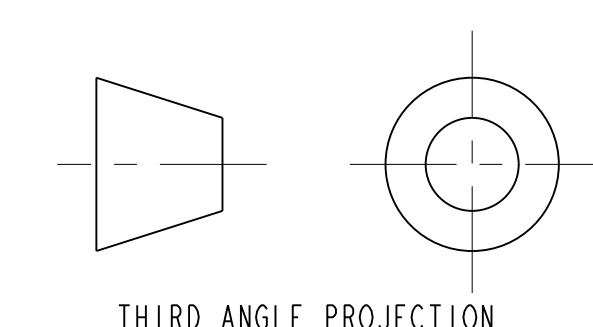
A



SECTION A - A

NOTES: (UNLESS OTHERWISE SPECIFIED)

- 1. THIS IS A CRYOGENIC VACUUM COMPONENT.
- 2. CLEANING PROCEDURE : PER VENDOR SPECIFICATION WITH LBNL APPROVAL.
- 3. PACKAGING AND STORAGE PROCEDURE OF THE COMPONENTS: PER VENDOR SPECIFICATION WITH LBNL APPROVAL.
- 4. DIMENSIONS AND TOLERANCING PER ANSI Y14.5M-1982. UNITS ARE IN INCHES UNLESS OTHERWISE SPECIFIED.
- 5. USE OF SULFUR OR SILICONE BEARING OILS, LUBRICANTS, OR COOLANTS ARE STRICTLY PROHIBITED.
- 6. USE OF RESIN OR RUBBER BONDED ABRASIVES UNDER POWER IS STRICTLY PROHIBITED. USE VITREOUS BONDED ABRASIVES ONLY.



THIRD ANGLE PROJECTION

REV	DATE	BY	CHK	ZONE	DESCRIPTION
A	11-01-02	ARH	SPV		INITIAL RELEASE
					CHANGES

UNLESS OTHERWISE SPECIFIED
 DECIMALS: X.X ± 0.1 FRACTIONS: ± 1/64
 ANGLES: X.XX ± 0.02 FINISH: ± 1.0 μm
 SURFACE: X.XXX ± 0.005
 DO NOT SCALE PRINT
 DIMENSIONS ARE CLASS 2
 CHAMFER EDGES OF ALL SCREEN THREADS 30°
 CUT ROUNDS: 1.5 THREAD RELIEF ON MACHINED THREADS
 BREAK EDGES: .116 MAX. ON MACHINED WORK
 REMOVE BURRS, WELD SPLATTER & LOOSE SCALE
 IN ACCORDANCE WITH SEMI E14.3M & B&E.1

ITEM	PART NO.	DESCRIPTION	MATERIAL	QTY	REGR	DESIGNER	MAT Location
6	-	SCW, M10X1.5, 65mm LG, SILVER PLATED	SS 18-8	2			
5	-	SCW, M10X1.5, 16mm LG, SILVER PLATED	SS 18-8	6			
4	-	WASHER, M10	SS	8			
3	-	SUPPORT PLATE	NEMA G10	1		R LA MANTIA	
2	Z5M801	SPLIT CLAMP	SS 304L	2		KNOLLS	
1	Z5M800	SPLIT HUB	SS 304L	1		KNOLLS	

ERNEST ORLANDO LAWRENCE
 BERKELEY NATIONAL LABORATORY
 UNIVERSITY OF CALIFORNIA BERKELEY

LHC IR FEEDBOX
 CRYOGENICS
 SUPPORT, Q3 SIDE, DFBXA / DFBXF

DWG: TYPE: ASSEM
 SCALE: 1/2
 SHEET 1 OF 2

REV: Z5LCE2
 LHZ003
 2514126

8

7

6

5

4

3

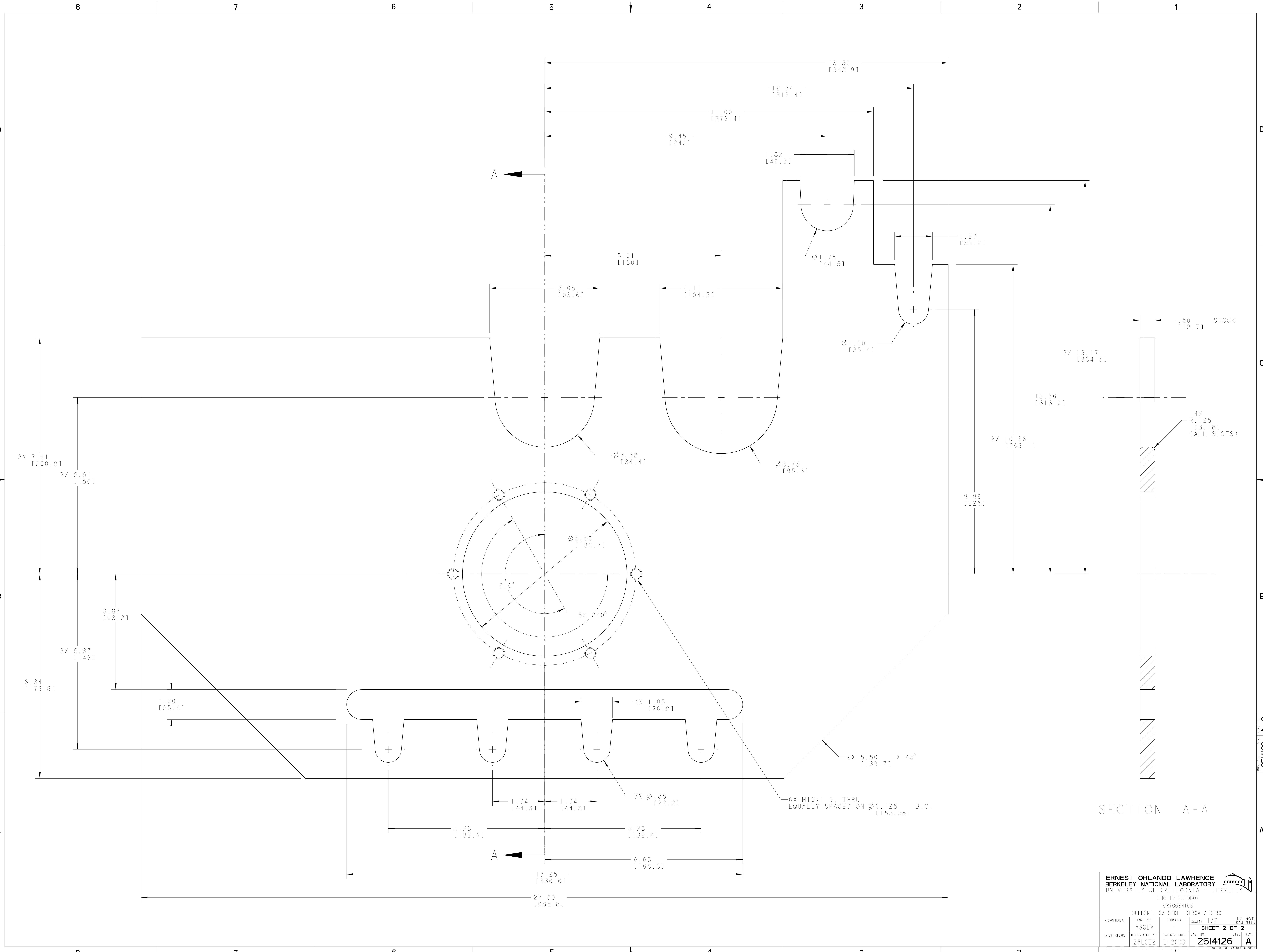
2

1

2514126 A 1

A

NAME: ARH:RIS OBJECT: 2514126_1 DATE: 25-Nov-02 14:25:40



SECTION A-A

ERNEST ORLANDO LAWRENCE BERKELEY NATIONAL LABORATORY <small>UNIVERSITY OF CALIFORNIA BERKELEY</small>			
LHC IR FEEDBOX CRYOGENICS			
SUPPORT, Q3 SIDE, DFBXA / DFBXF			
MICROFILMED:	DRG. TYPE:	SHOW ON:	SCALE:
	ASSEM		1/2
SHEET 2 OF 2			[DO NOT CHECK PRINTS]
PATENT CLEAR:	DESIGN ACCT. NO.:	CATEGORY CODE:	DRG. NO.:
	Z5LCE2	LH2003	2514126
SIZE: A			REV.

2514126 A 2