

8

7

6

5

4

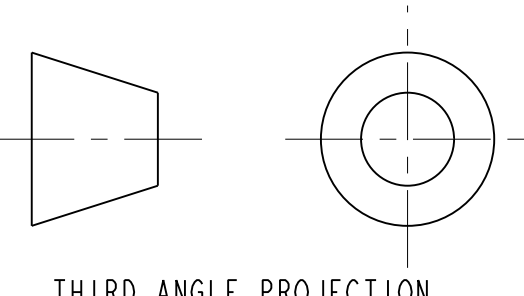
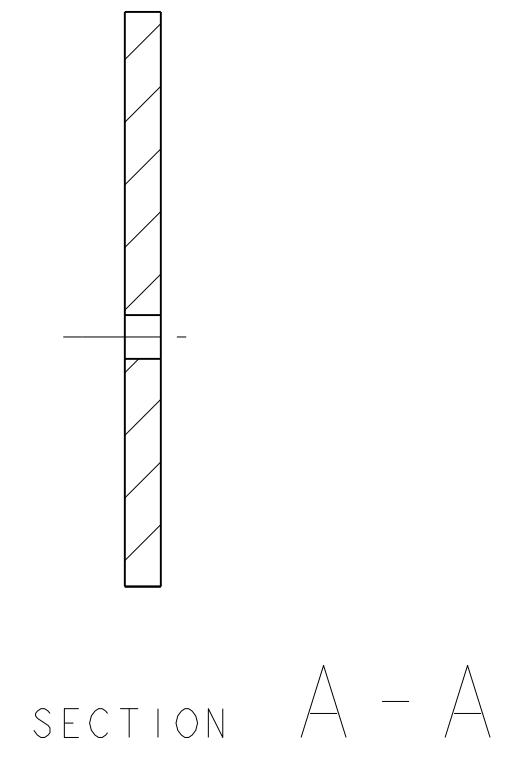
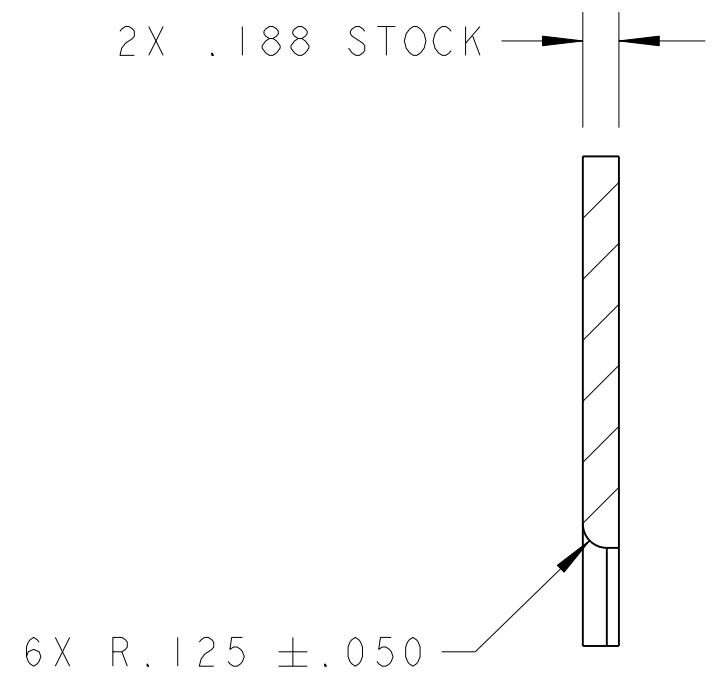
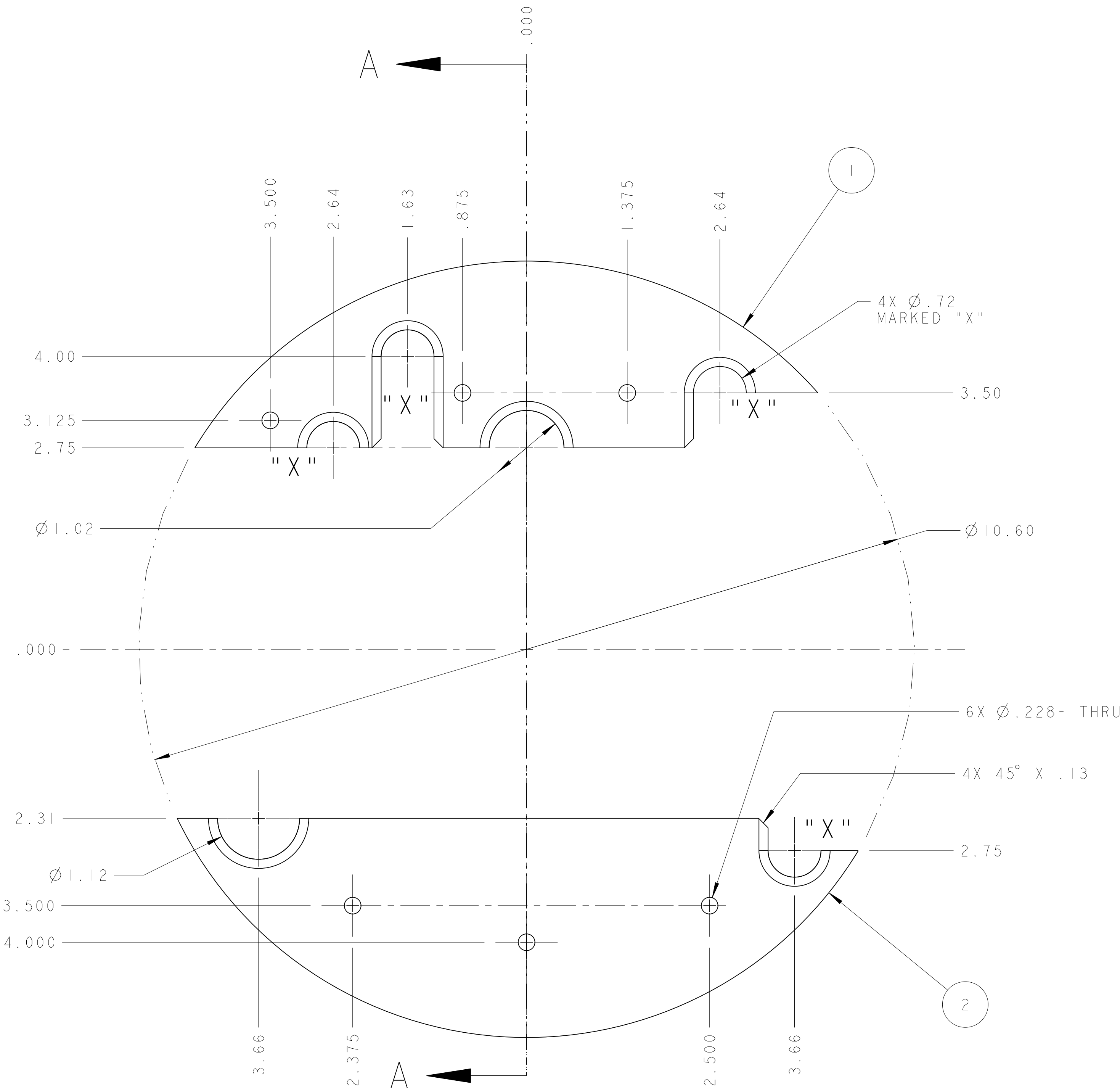
3

1

NOTES: UNLESS OTHERWISE SPECIFIED,

1. DIMENSIONS AND TOLERANCING PER ANSI Y14.5M-1982 UNITS ARE IN INCHES UNLESS OTHERWISE SPECIFIED.
2. USE OF SULFUR OR SILICONE BEARING OILS, LUBRICANTS, OR COOLANTS ARE STRICTLY PROHIBITED
3. USE OF RESIN OR RUBBER BONDED ADRASIVES UNDER POWER IS STRICTLY PROHIBITED. USE VITREOUS BONDED ABRASIVES ONLY.
4. THIS IS A HIGH VACUUM COMPONENT. CLEAN AFTER MACHINING USING A NON-ETCHING ALKALI BASED SOLUTION.
6. PROTECT FINISHED PART BY BAGGING OR SIMILAR METHOD TO PROTECT AND MAINTAIN CLEANLINESS DURING SHIPMENT AND STORAGE.

|          |         |      |                   |          |
|----------|---------|------|-------------------|----------|
| DWG. NO. | SIZE    | REV. | SH.               |          |
| 2513964  | A       | 1    |                   |          |
| 2        | -       | 1    | RETAINER PLATE -2 | NEMA G10 |
| 1        | -       | 1    | RETAINER PLATE -1 | NEMA G10 |
| ITEM     | PART NO | REQD | DESCRIPTION       | MATERIAL |



THIRD ANGLE PROJECTION

|   |  |                          |  |                  |  |                        |  |                                     |  |
|---|--|--------------------------|--|------------------|--|------------------------|--|-------------------------------------|--|
| UNLESS OTHERWISE SPECIFIED                        |  |                          |  | SHOP ORDERS      |  | SER. NO. -             |  | ERNEST ORLANDO LAWRENCE             |  |
| X.X ± 0.1   |  | FRAC. ± 1/64             |  | ACCT. NO.        |  | NO. REQD.              |  | BERKELEY NATIONAL LABORATORY        |  |
| X.XX ± 0.02                                       |  | Angles ± 1.00°           |  | DEL. TO          |  | DATE ISSD.             |  | UNIVERSITY OF CALIFORNIA - BERKELEY |  |
| X.XXX ± 0.005                                     |  | FINISH $125 \sqrt{R.A.}$ |  | SURFACE TREATMT  |  | DATE RECD.             |  | LHC IR FEEDBOX                      |  |
| DO NOT SCALE PRINT                                |  |                          |  | IDENT. METHOD    |  | PROJECT TAG            |  | CRYOGENICS                          |  |
| THREADS ARE CLASS 2                               |  |                          |  | PROJECT NUMBER   |  | N/A                    |  | RETAINER PLATE ASSEMBLY             |  |
| CHAMFER ENDS OF ALL SCREW THREADS 30°             |  |                          |  | PROJECT NAME     |  | NA                     |  | MICROFILMED:                        |  |
| CUT ROUNDS, 1.5 THREAD RELIEF ON MACHINED THREADS |  |                          |  | DWG. BY          |  | R.L.A. MANTIA          |  | DWG. TYPE                           |  |
| BREAK EDGES .016 MAX. ON MACHINED WORK            |  |                          |  | CHK. BY          |  | Jon Zbasnik/S.Virostek |  | ASSEM                               |  |
| REMOVE BURRS, WELD SPLATTER & LOOSE SCALE         |  |                          |  | DATE             |  | 12-Oct-01              |  | SHOWN ON                            |  |
| IN ACCORDANCE WITH ASME Y14.5M & B46.1            |  |                          |  | APR. BY          |  | Jon Zbasnik/D.Oshatz   |  | SCALE: 1/1                          |  |
| REV   |  | DWG                      |  | CHK              |  | ZONE                   |  | DATE                                |  |
| A   |  | ARH                      |  | SPV              |  | 11-14-02               |  | DO NOT SCALE PRINTS                 |  |
| INITIAL RELEASE                                   |  |                          |  | DESIGN ACCT. NO. |  | CATEGORY CODE          |  | SHEET 1 OF 1                        |  |
| CHANGES   |  |                          |  | PATENT CLEAR:    |  | Z5LC22 LH2003          |  | DWG. NO.                            |  |
|   |  |                          |  | DATE             |  | 14-Nov-02              |  | 2513964                             |  |
|   |  |                          |  | DATE             |  | 14-Nov-02              |  | A                                   |  |

8

7

6

5

4

3

2

1