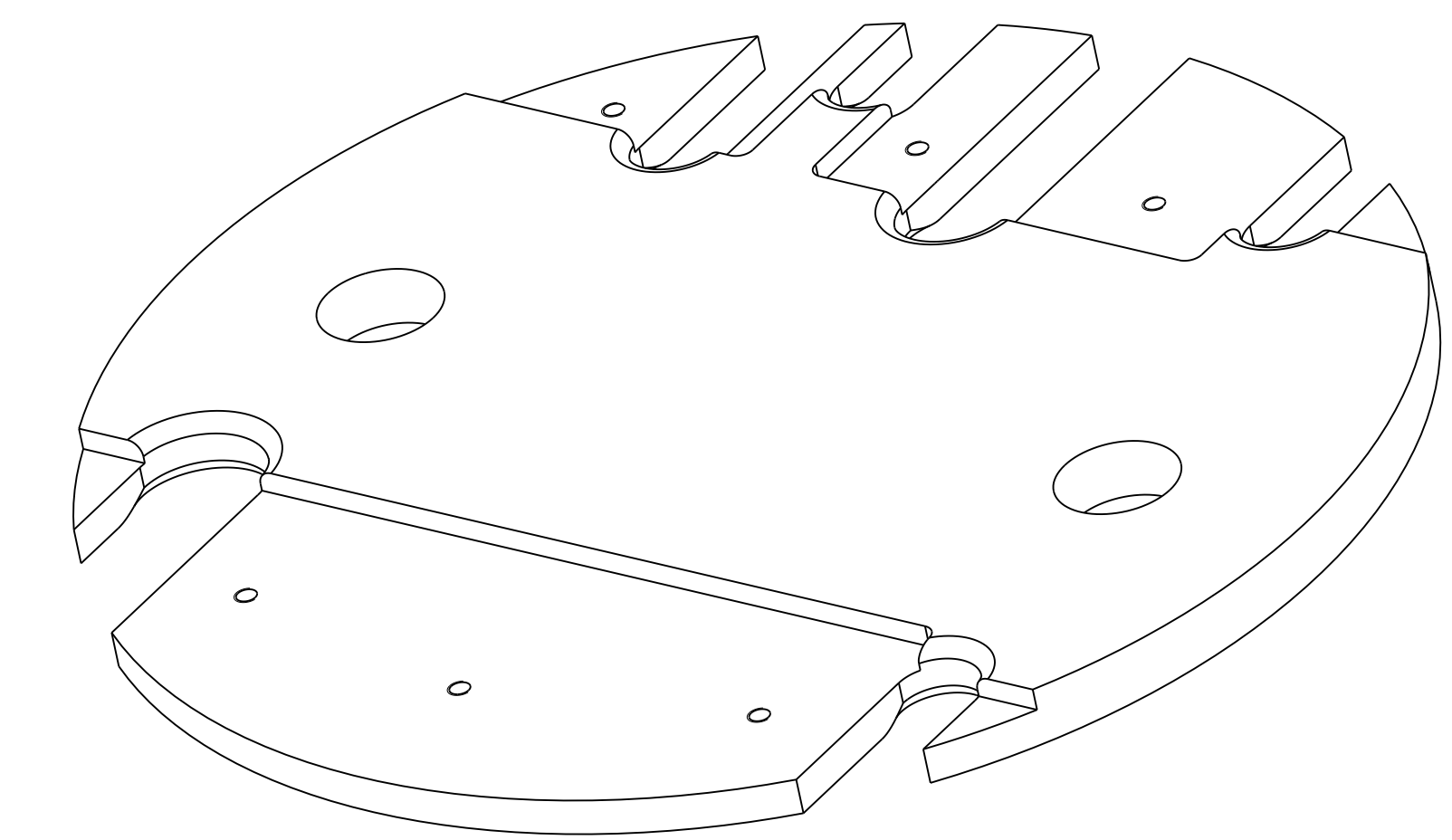
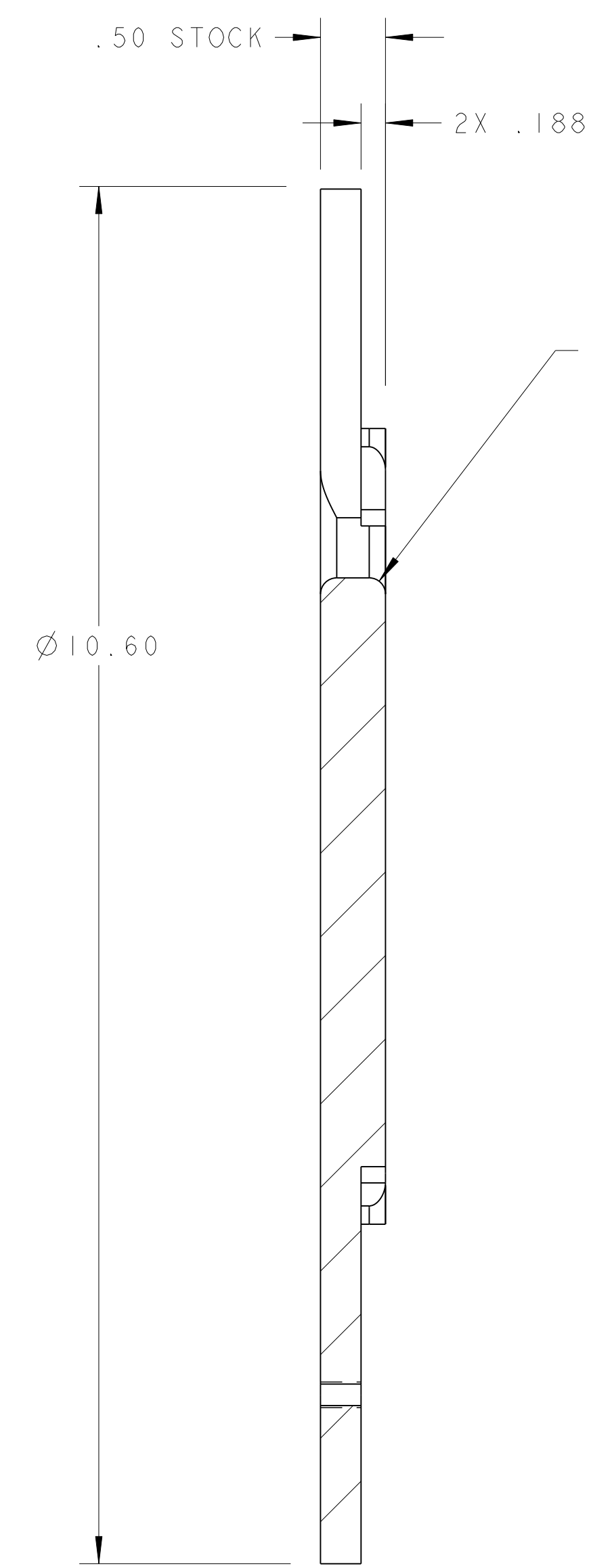
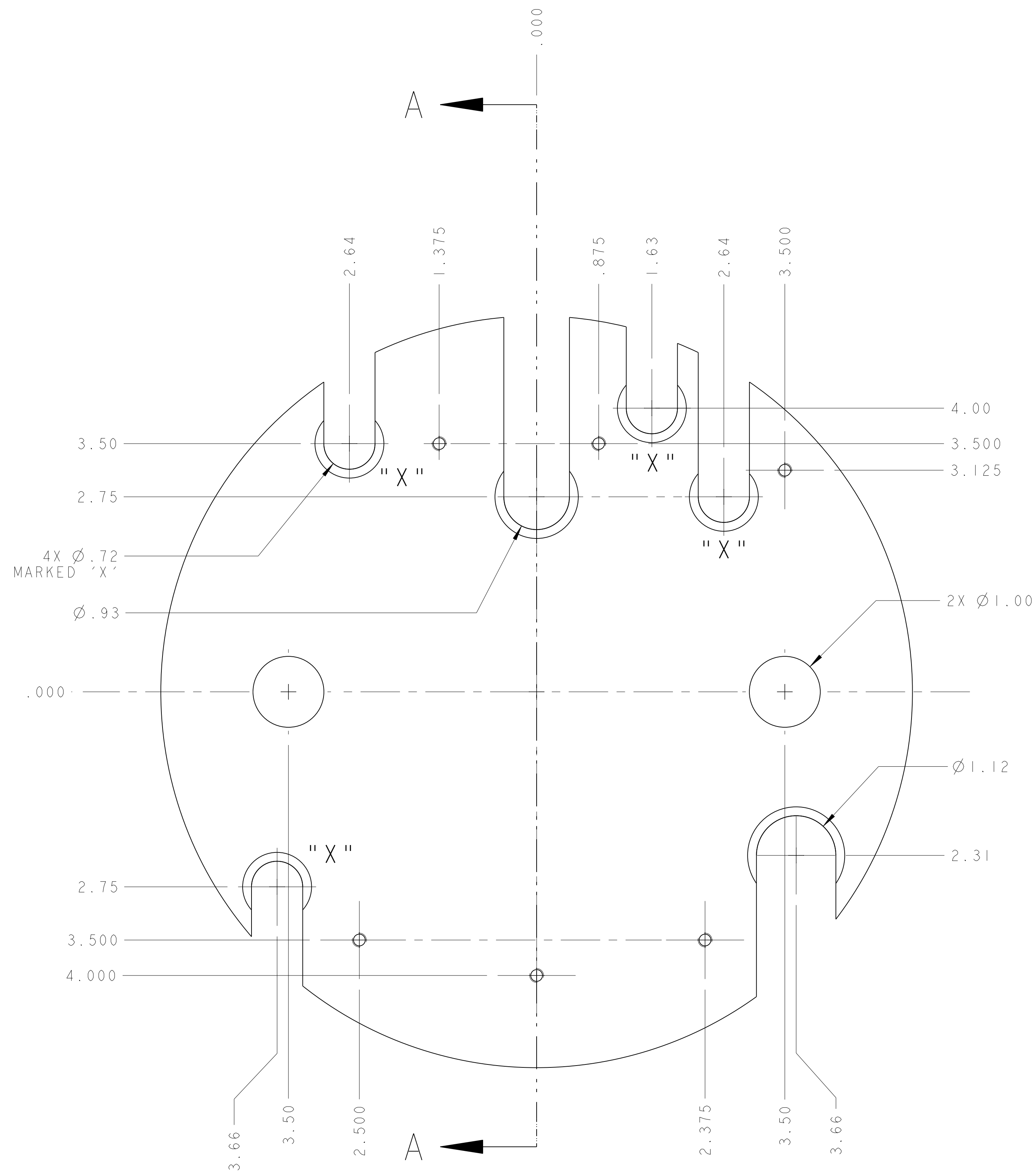


NOTES: UNLESS OTHERWISE SPECIFIED,

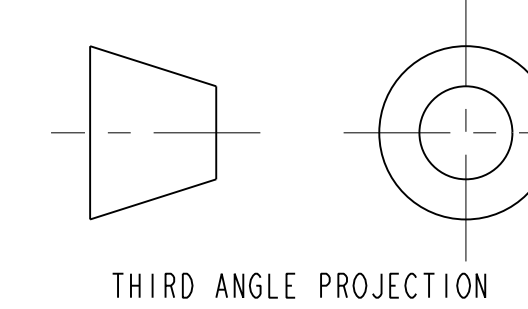
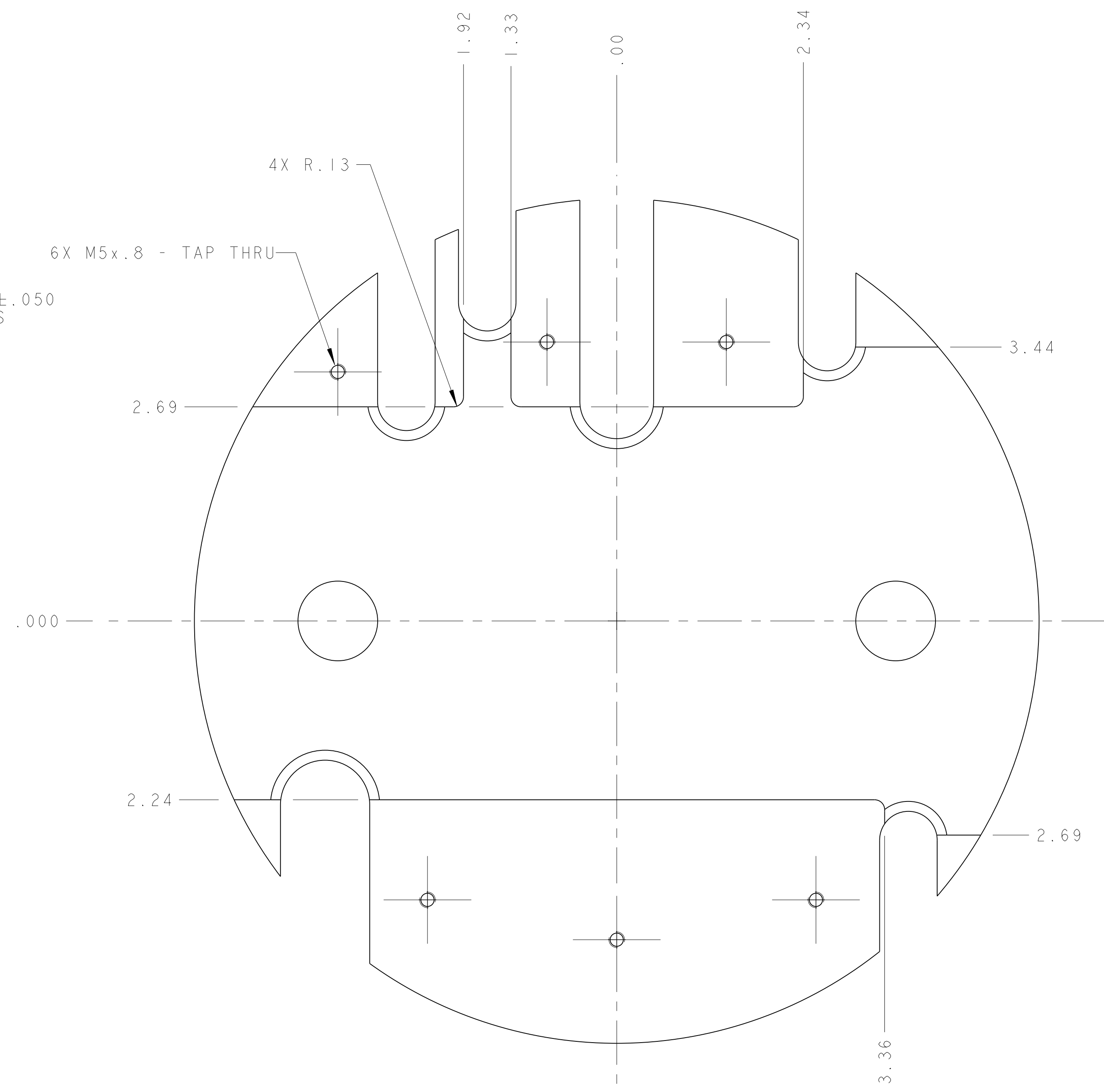
1. DIMENSIONS AND TOLERANCING PER ANSI Y14.5M-1982 UNITS ARE IN INCHES UNLESS OTHERWISE SPECIFIED.
2. USE OF SULFUR OR SILICONE BEARING OILS, LUBRICANTS, OR COOLANTS ARE STRICTLY PROHIBITED.
3. USE OF RESIN OR RUBBER BONDED ABRASIVES UNDER POWER IS STRICTLY PROHIBITED. USE VITREOUS BONDED ABRASIVES ONLY.
4. THIS IS A HIGH VACUUM COMPONENT. CLEAN AFTER MACHINING USING A NON-ETCHING ALKALI BASED SOLUTION.
5. PROTECT FINISHED PART BY BAGGING OR SIMILAR METHOD TO PROTECT AND MAINTAIN CLEANLINESS DURING SHIPMENT AND STORAGE.



SCALE 3/4



SECTION A - A



THIRD ANGLE PROJECTION

REV	DWG	CHK	ZONE	DATE	CHANGES
A	ARH	SPV		11-14-02	INITIAL RELEASE

TOLERANCES		SURFACE FINISH		THREADS		KEYWAYS		HOLE TYPES		MATERIAL	
X.X ± 0.1	FRACTION ± 1/64	AS SPECIFIED	AS SPECIFIED	AS SPECIFIED	AS SPECIFIED	AS SPECIFIED	AS SPECIFIED	AS SPECIFIED	AS SPECIFIED	AS SPECIFIED	AS SPECIFIED
X.XX ± 0.02	ANGLES ± 1.00°	AS SPECIFIED	AS SPECIFIED	AS SPECIFIED	AS SPECIFIED	AS SPECIFIED	AS SPECIFIED	AS SPECIFIED	AS SPECIFIED	AS SPECIFIED	AS SPECIFIED
X.XXX ± 0.005	FINISH: 125 μm	AS SPECIFIED	AS SPECIFIED	AS SPECIFIED	AS SPECIFIED	AS SPECIFIED	AS SPECIFIED	AS SPECIFIED	AS SPECIFIED	AS SPECIFIED	AS SPECIFIED

SHOP ORDERS		MATERIAL		MATERIAL LOCATION	
NO. 1	NO. 2	NO. 3	NO. 4	NO. 5	NO. 6
DESCRIPTION	DESCRIPTION	DESCRIPTION	DESCRIPTION	DESCRIPTION	DESCRIPTION
ERNEST ORLANDO LAWRENCE BERKELEY NATIONAL LABORATORY UNIVERSITY OF CALIFORNIA - BERKELEY					
LHC IR FEEDBOX CRYOGENICS SUPPORT PLATE					
MICROFILMED	DWG. TYPE	SHOWN ON	SCALE	1/1	DO NOT SCALE PRINTS
	PART				
DESIGNER	DESIGN ACCT. NO.	CATEGORY CODE	DWG. NO.	SHEET 1 OF 1	
ARH	ZSLCE2	LH2003	2513956	A	

2513956 A 1