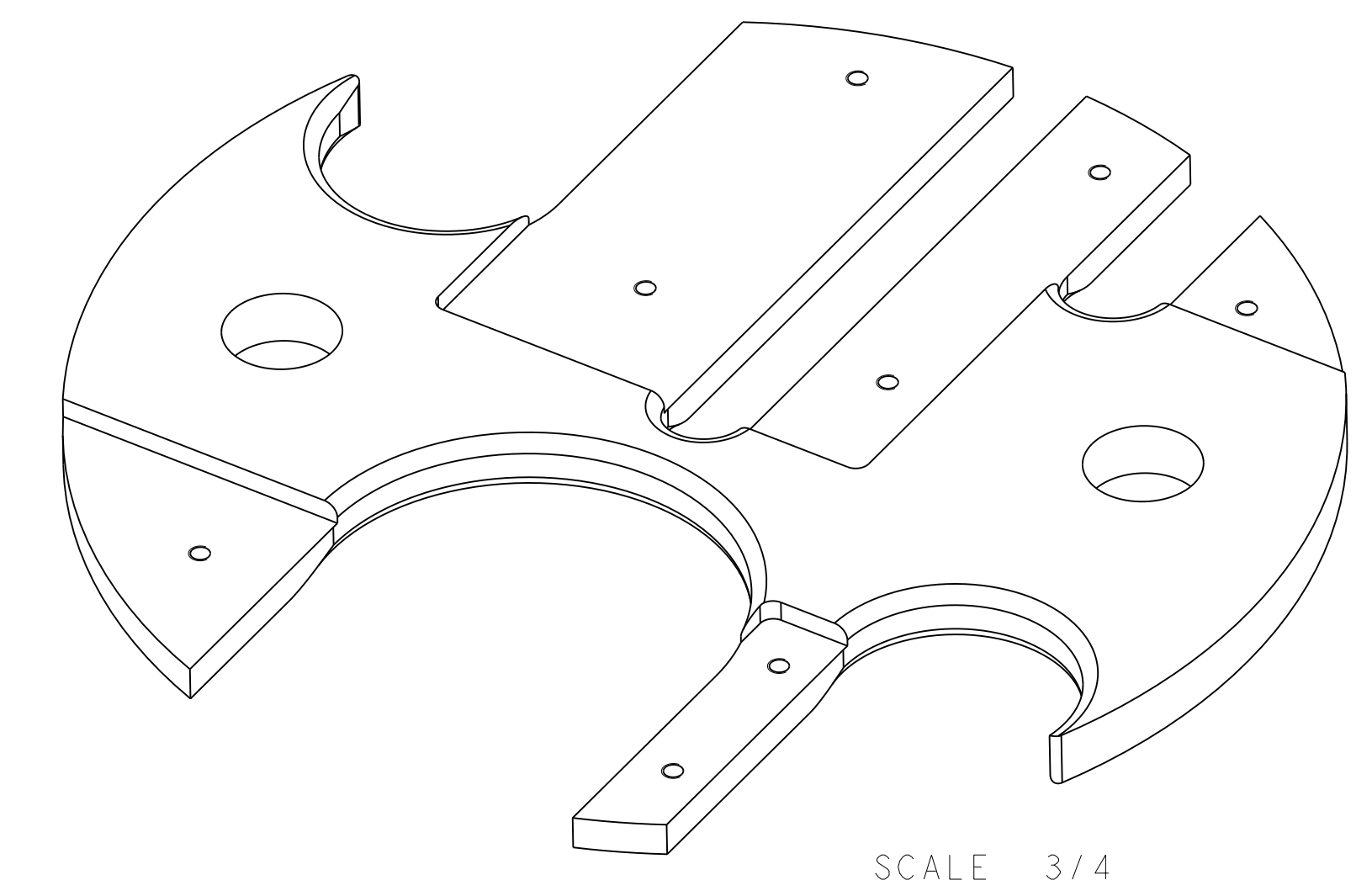


8 7 6 5 4 3 2 1

NOTES: UNLESS OTHERWISE SPECIFIED,

1. DIMENSIONS AND TOLERANCING PER ANSI Y14.5M-1982 UNITS ARE IN INCHES UNLESS OTHERWISE SPECIFIED.
2. USE OF SULFUR OR SILICONE BEARING OILS, LUBRICANTS, OR COOLANTS ARE STRICTLY PROHIBITED
3. USE OF RESIN OR RUBBER BONDED ABRASIVES UNDER POWER IS STRICTLY PROHIBITED. USE VITREOUS BONDED ABRASIVES ONLY.
4. THIS IS A HIGH VACUUM COMPONENT. CLEAN AFTER MACHINING USING A NON-ETCHING ALKALI BASED SOLUTION.
6. PROTECT FINISHED PART BY BAGGING OR SIMILAR METHOD TO PROTECT AND MAINTAIN CLEANLINESS DURING SHIPMENT AND STORAGE.



D

D

C

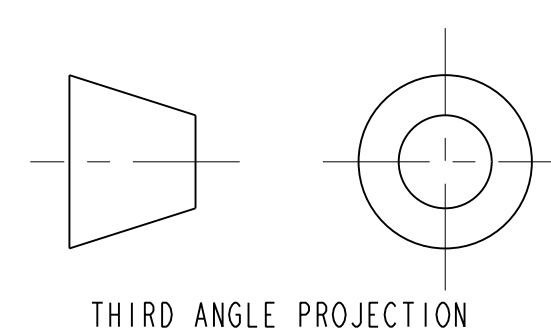
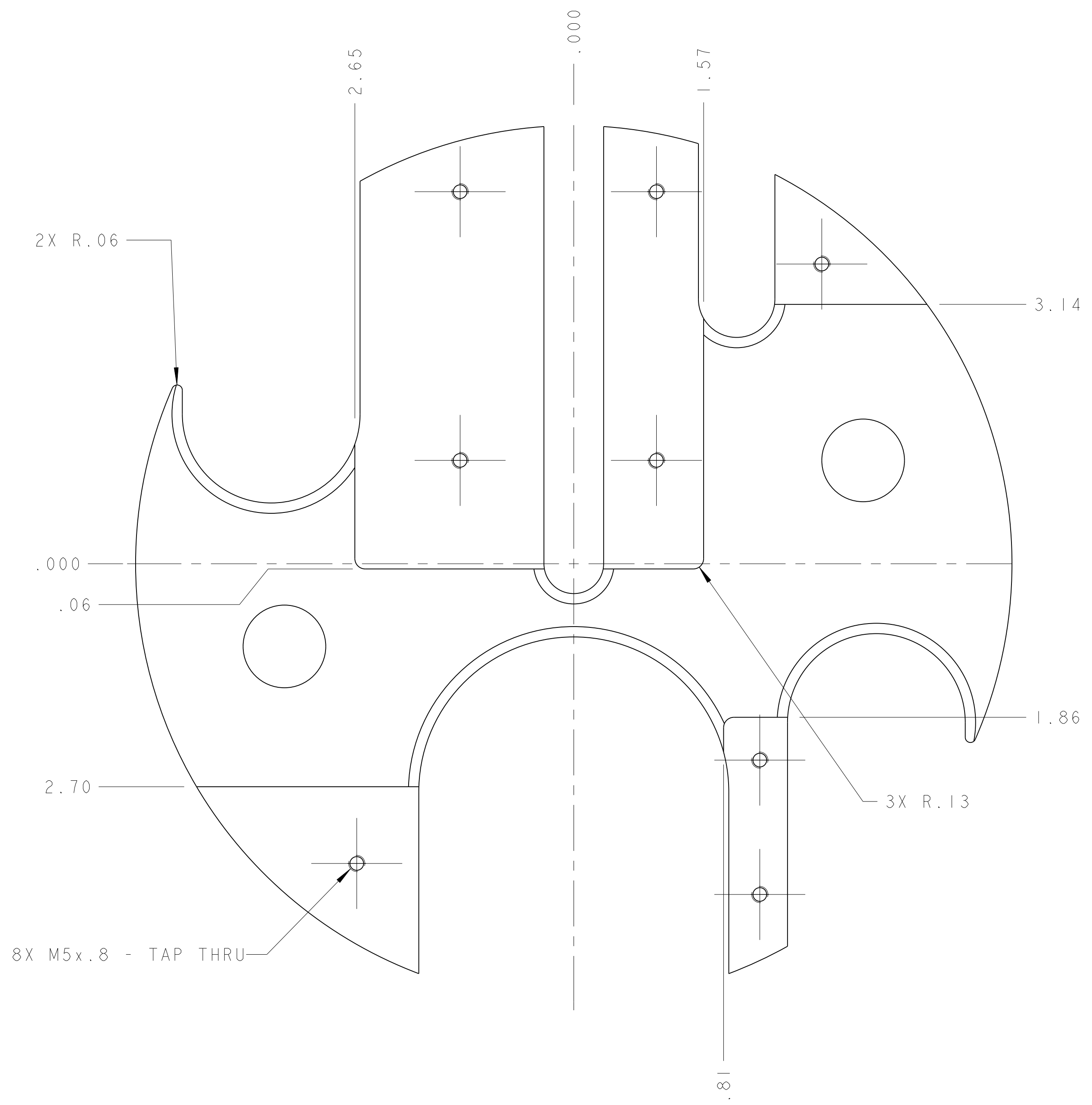
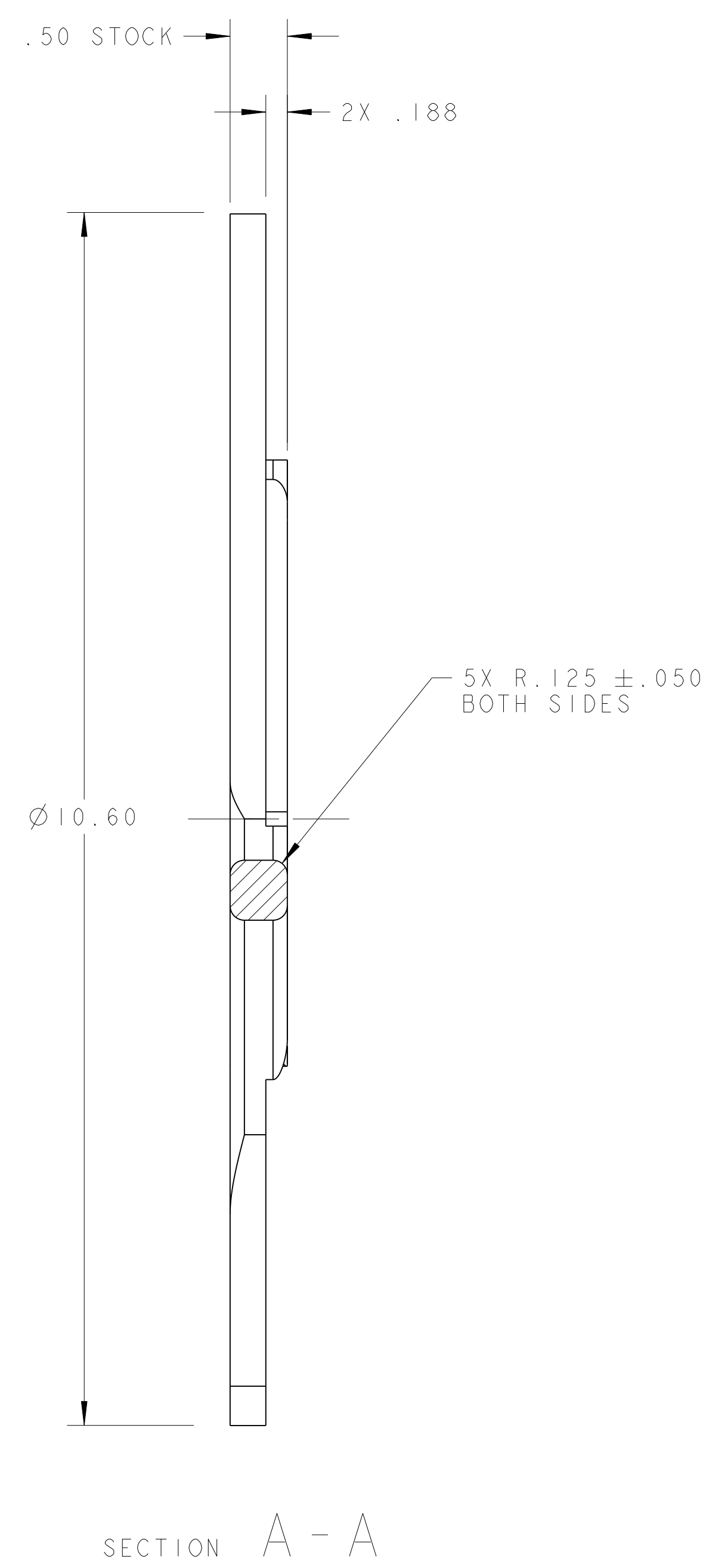
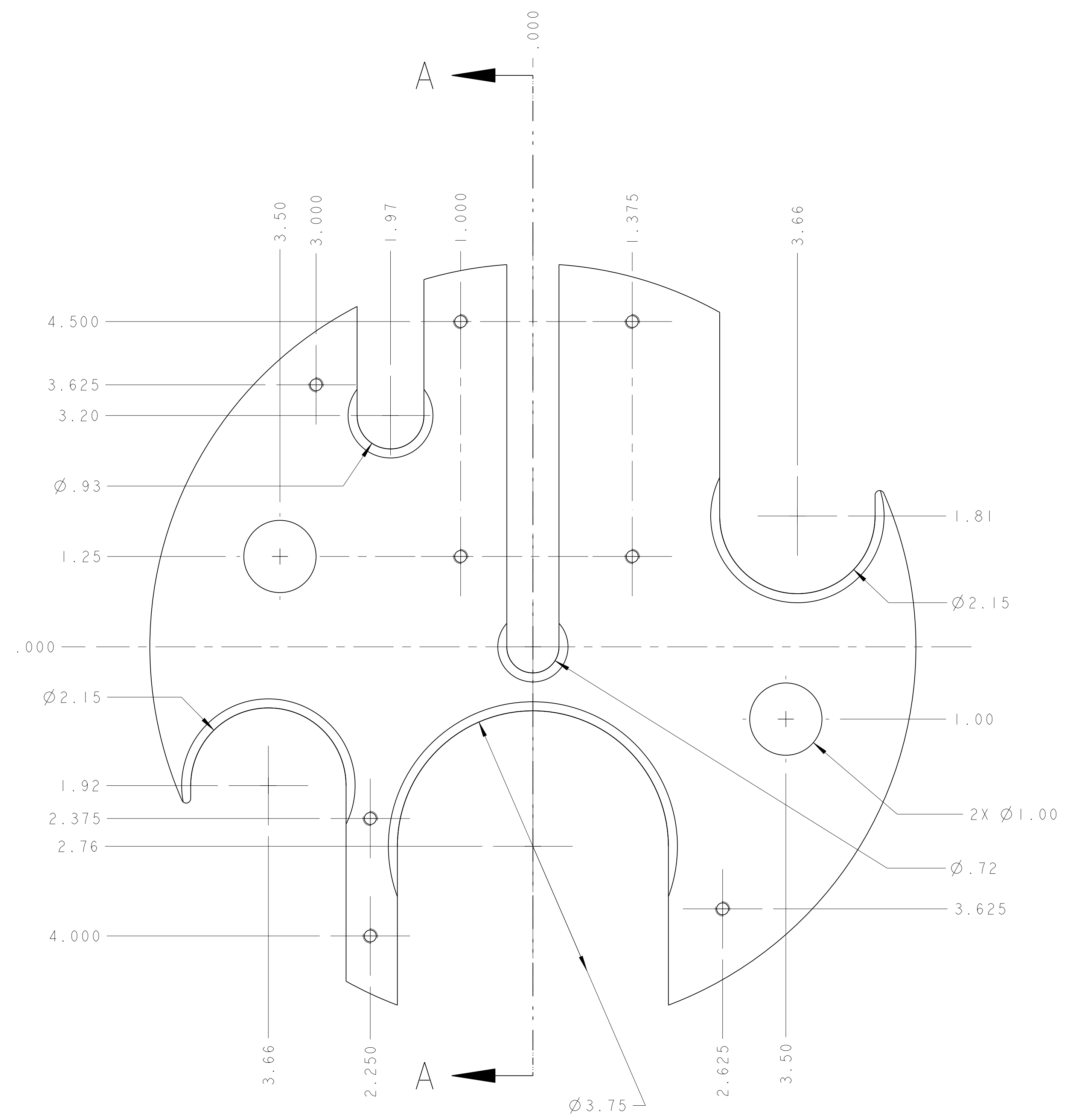
C

B

B

A

A



REV	DWG	CHK	ZONE	DATE	CHANGES
A	ARH	SPV		11-15-02	INITIAL RELEASE

UNLESS OTHERWISE SPECIFIED	SHOP ORDERS	SEA	NO.	DATE	REGR.
TOLERANCES	X.X ± 0.1	FRAC.	± 1/64		
	X.XX ± 0.02	ANGLE	± 1.00°		
	X.XXX ± 0.005	FINISH	125/32		
DO NOT SCALE PRINT					
THREADS ARE CLASS 2					
CHAMFER ENDS OF ALL SCREW THREADS .50"					
CUT ROUNDS, 1.5 THREAD RELIEF ON MACHINED THREADS					
BREAK EDGES .25 MAX. ON MACHINED WORK					
REMOVE BURRS, WELD SPATTER AFTER A LOSS OF SCALE					
IN ACCORDANCE WITH ASME Y14.5M-1982					

SUPPORT PLATE		NEMA 610	MATERIAL		MAT. LOCATION
DESCRIPTION					
ERNEST ORLANDO LAWRENCE					
BERKELEY NATIONAL LABORATORY					
UNIVERSITY OF CALIFORNIA - BERKELEY					
LHC IR FEEDBOX					
CRYOGENICS					
SUPPORT PLATE					
MICROFILMED:	DWG. TYPE	SHOWN ON	SCALE: 1/1	DO NOT SCALE PRINTS	
	PART			SHEET 1 OF 1	
PATENT CLEAR:	DESIGN ACCT. NO.	CATEGORY CODE	DWG. NO.	REV.	A
ZSLCE2	LH2003		2513896		

8 7 6 5 4 3 2 1

2513896 A 1