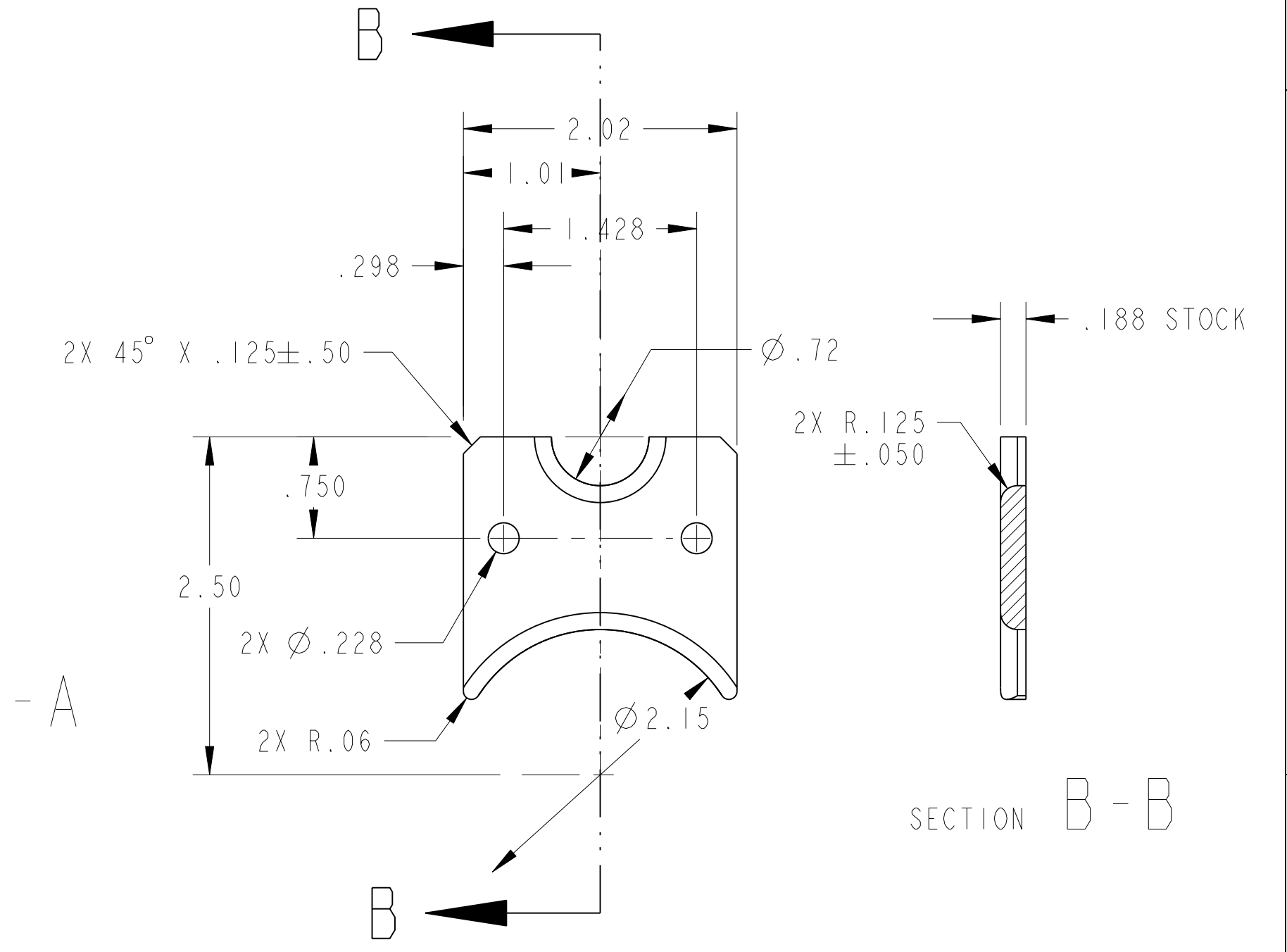
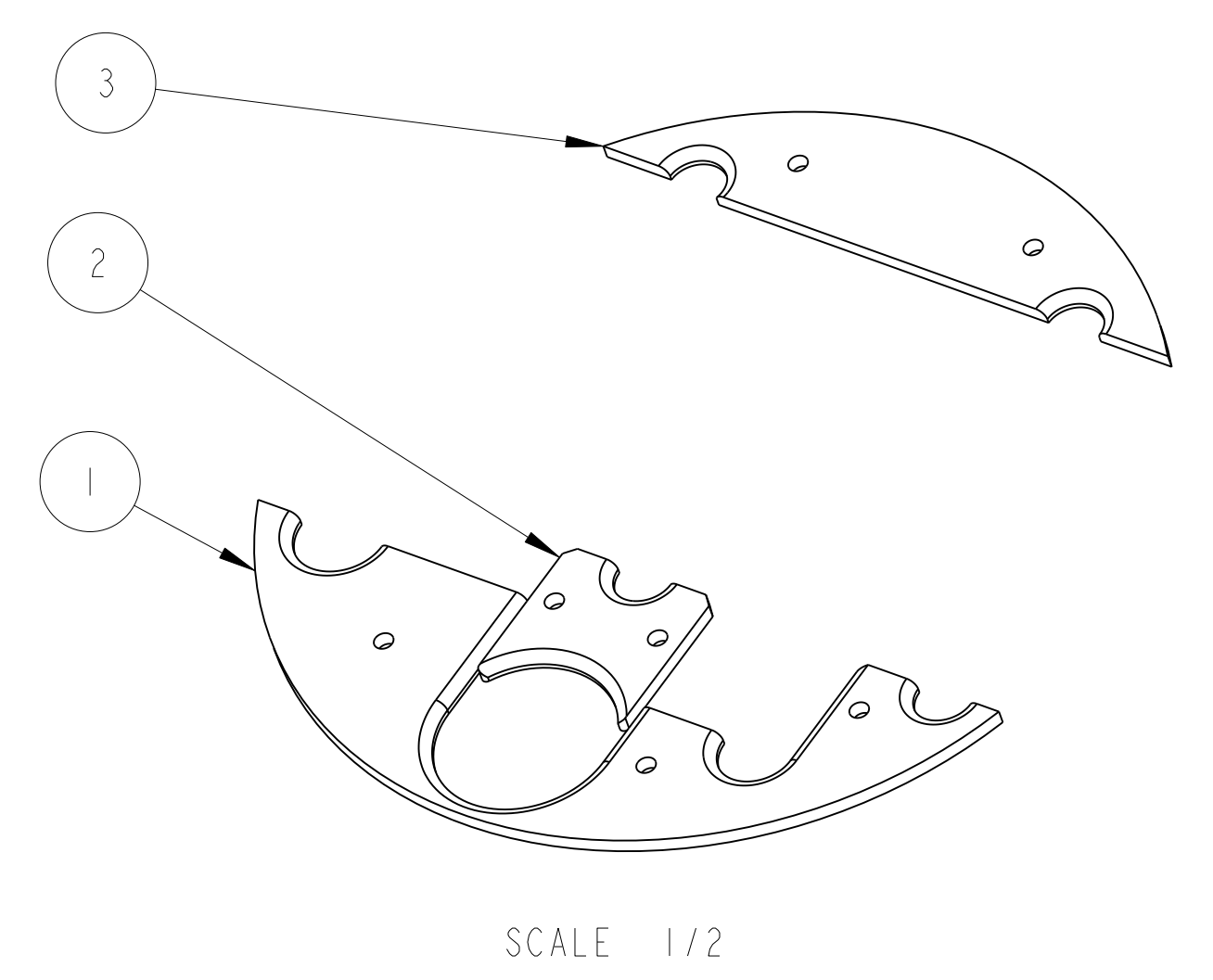
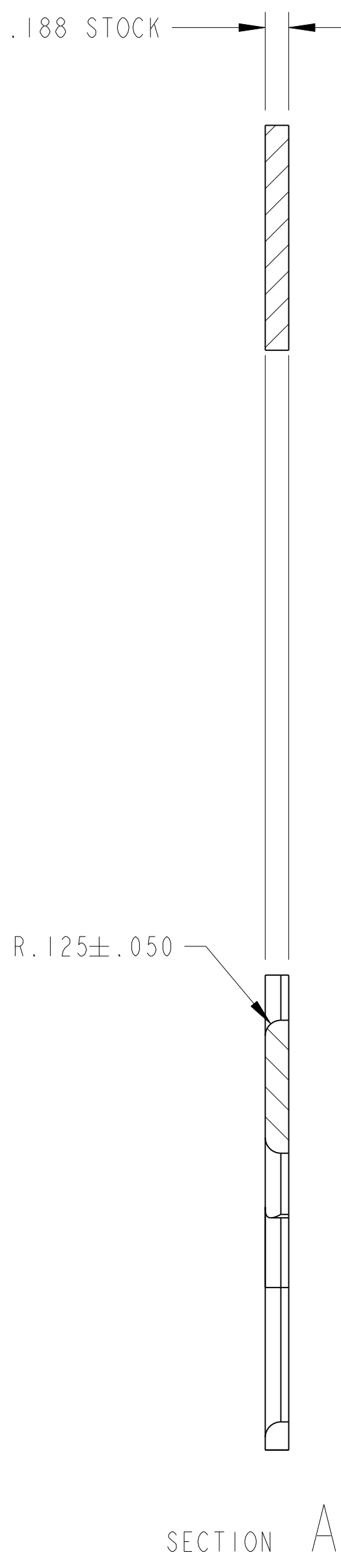
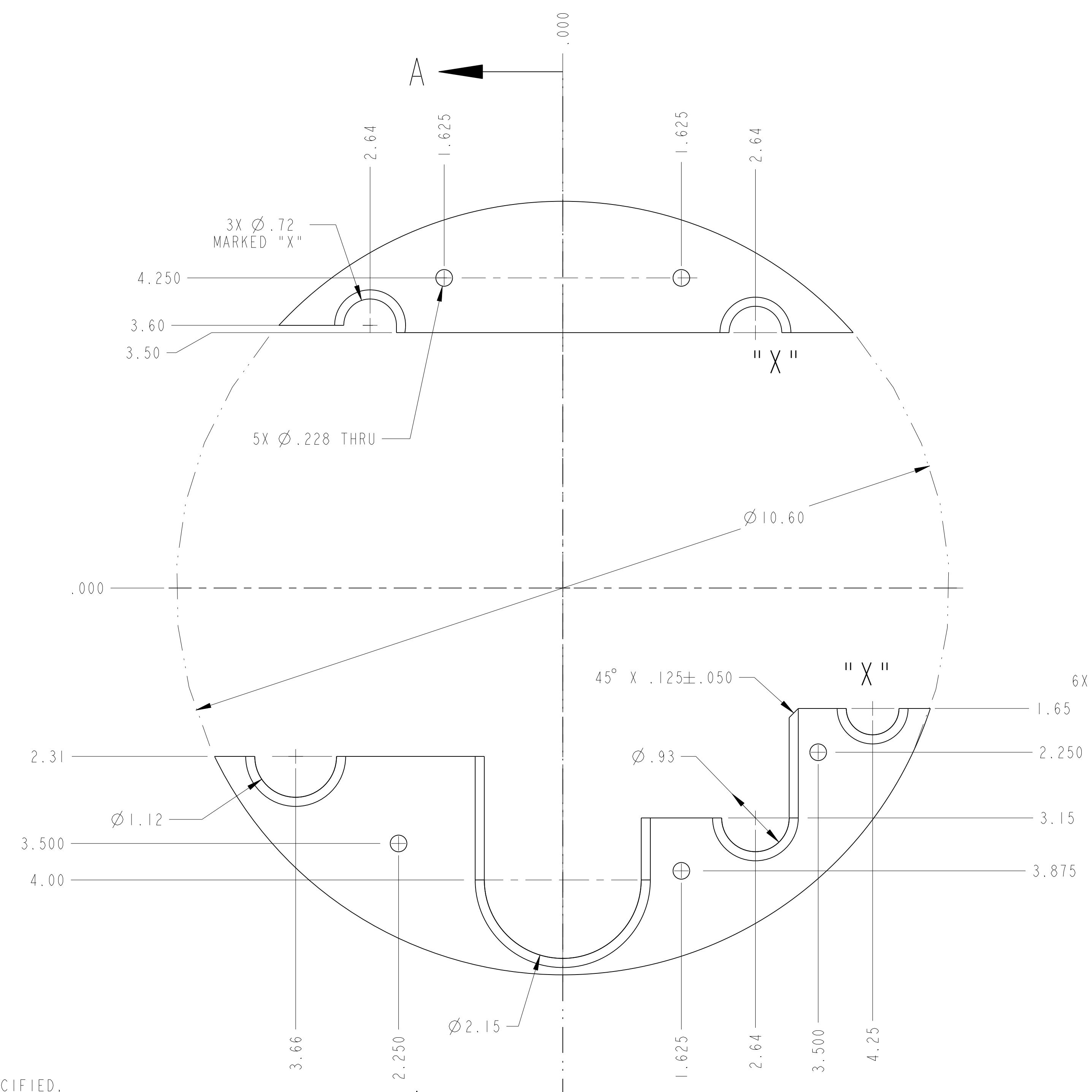
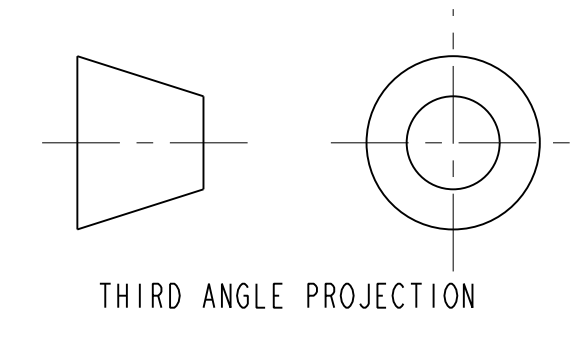


DWG. NO.		SIZE	REV.	SH.		
2513884		A	1			1
ITEM	PART NO.	RECD	DESCRIPTION			MATERIAL
3	-	I	RETAINER PLATE -3			NEMA G10
2	-	I	RETAINER PLATE -2			NEMA G10
1	-	I	RETAINER PLATE -1			NEMA G10



- NOTES: UNLESS OTHERWISE SPECIFIED,
- DIMENSIONS AND TOLERANCING PER ANSI Y14.5M-1982 UNITS ARE IN INCHES UNLESS OTHERWISE SPECIFIED.
 - USE OF SULFUR OR SILICONE BEARING OILS, LUBRICANTS, OR COOLANTS ARE STRICTLY PROHIBITED
 - USE OF RESIN OR RUBBER BONDED ADRASIVES UNDER POWER IS STRICTLY PROHIBITED. USE VITREOUS BONDED ABRASIVES ONLY.
 - THIS IS A HIGH VACUUM COMPONENT. CLEAN AFTER MACHINING USING A NON-ETCHING ALKALI BASED SOLUTION.
 - PROTECT FINISHED PART BY BAGGING OR SIMILAR METHOD TO PROTECT AND MAINTAIN CLEANLINESS DURING SHIPMENT AND STORAGE.



UNLESS OTHERWISE SPECIFIED		SHOP ORDERS		SER. NO.		ERNEST ORLANDO LAWRENCE	
X.X ± 0.1		FRAC. ± 1/64		NO.		BERKELEY NATIONAL LABORATORY	
X.XX ± 0.02		Angles ± 1.00°		DATE ISSD		UNIVERSITY OF CALIFORNIA - BERKELEY	
X.XXX ± 0.005		FINISH 125 $\sqrt{\mu\text{in}}$		DATE RECD		LHC IR FEEDBOX	
DO NOT SCALE PRINT		SURFACE TREATMT		PROJECT TAG		CRYogenics	
THREADS ARE CLASS 2		IDENT METHOD		PROJECT NUMBER		RETAINER PLATE ASSEMBLY	
CHAMFER ENDS OF ALL SCREW THREADS 30°		PROJECT N/A		PROJECT NAME		MICROFILMED: _____	
CUT ROUNDS, 1.5 THREAD RELIEF ON MACHINED THREADS		DWG BY R L A MANTIA		DATE 4-Dec-01		DWG. TYPE ASSEM	
BREAK EDGES .016 MAX. ON MACHINED WORK		CHK BY Jon Zbasnik/S.Virostek		DATE 31-Oct-02		SHOWN ON _____	
REMOVE BURRS, WELD SPLATTER & LOOSE SCALE		APP BY Jon Zbasnik/S.Virostek		DATE 31-Oct-02		SCALE: 1/1	
IN ACCORDANCE WITH ASME Y14.5M & B46.1						DO NOT SCALE PRINTS	
REV DWG CHK ZONE DATE		INITIAL RELEASE		PATENT CLEAR: Z5LCE2		CATEGORY CODE: LH2003	
		CHANGES		DESIGN ACCT. NO. 2513884		SHEET 1 OF 1	
				SIZE A		REV. _____	