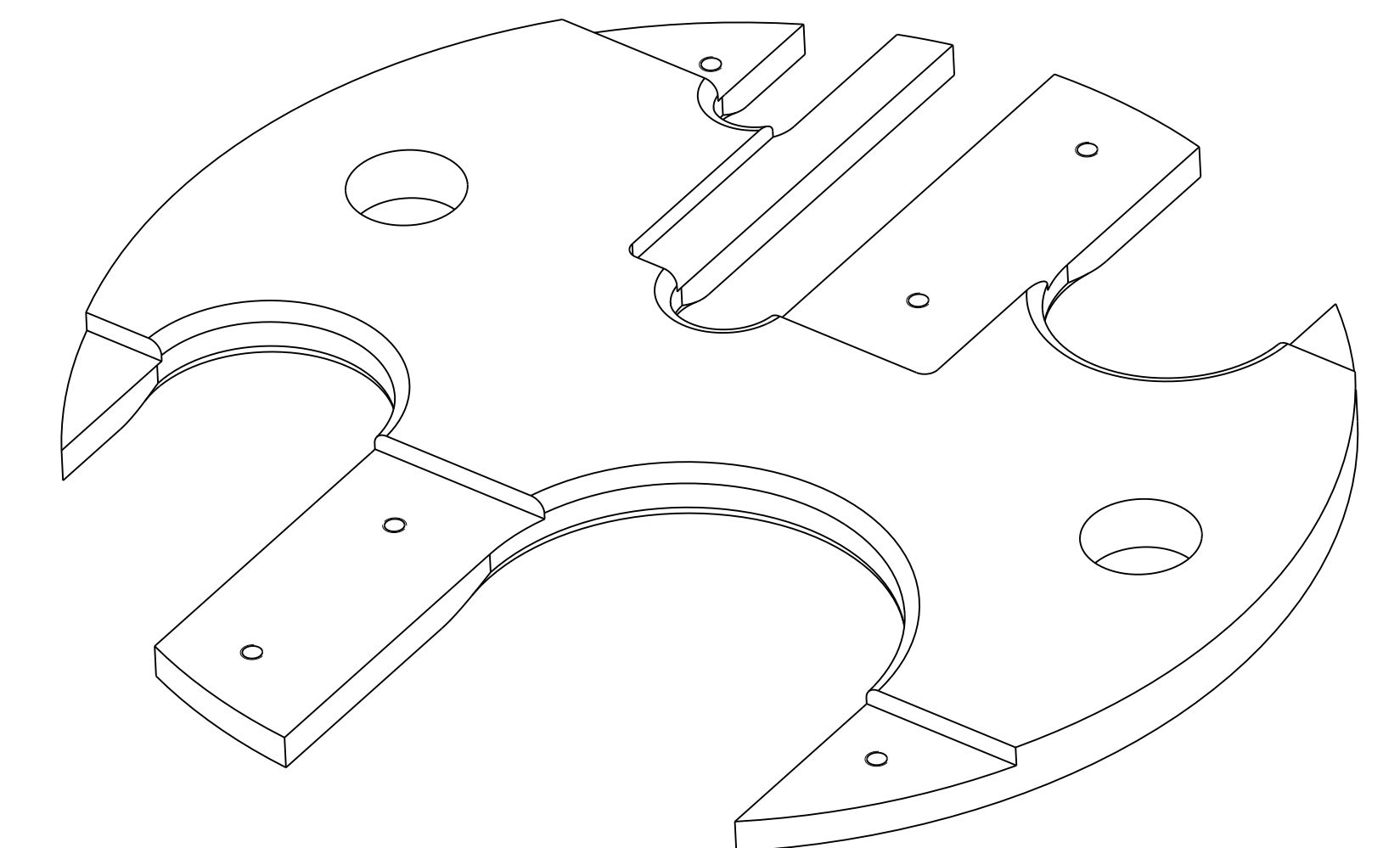
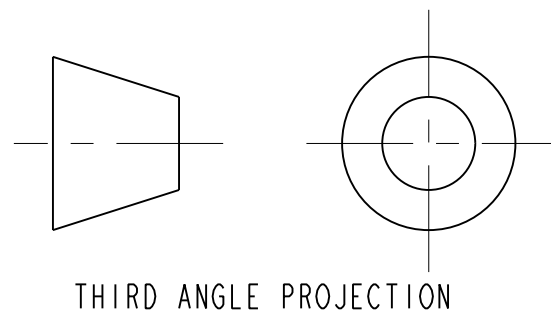
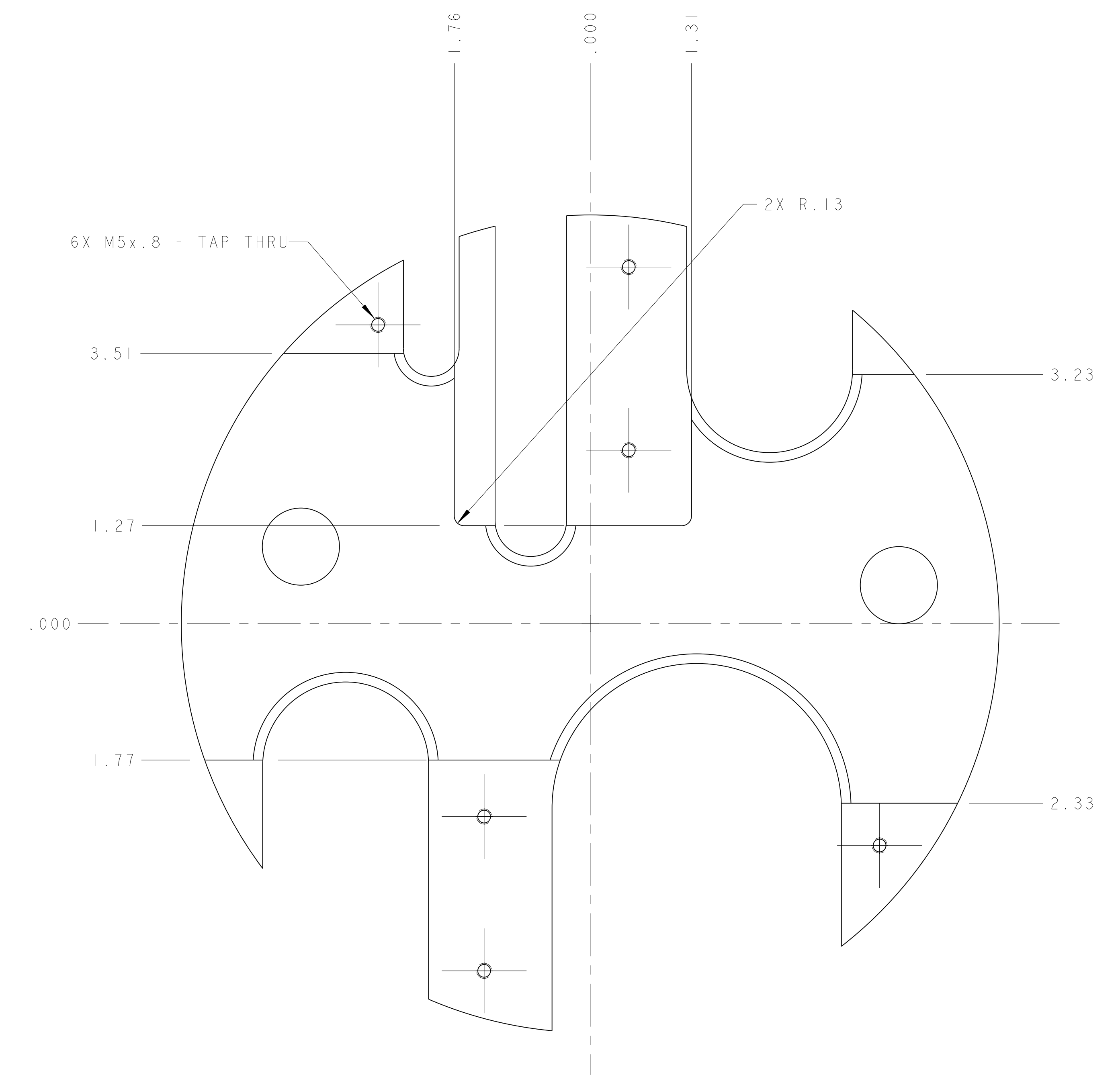
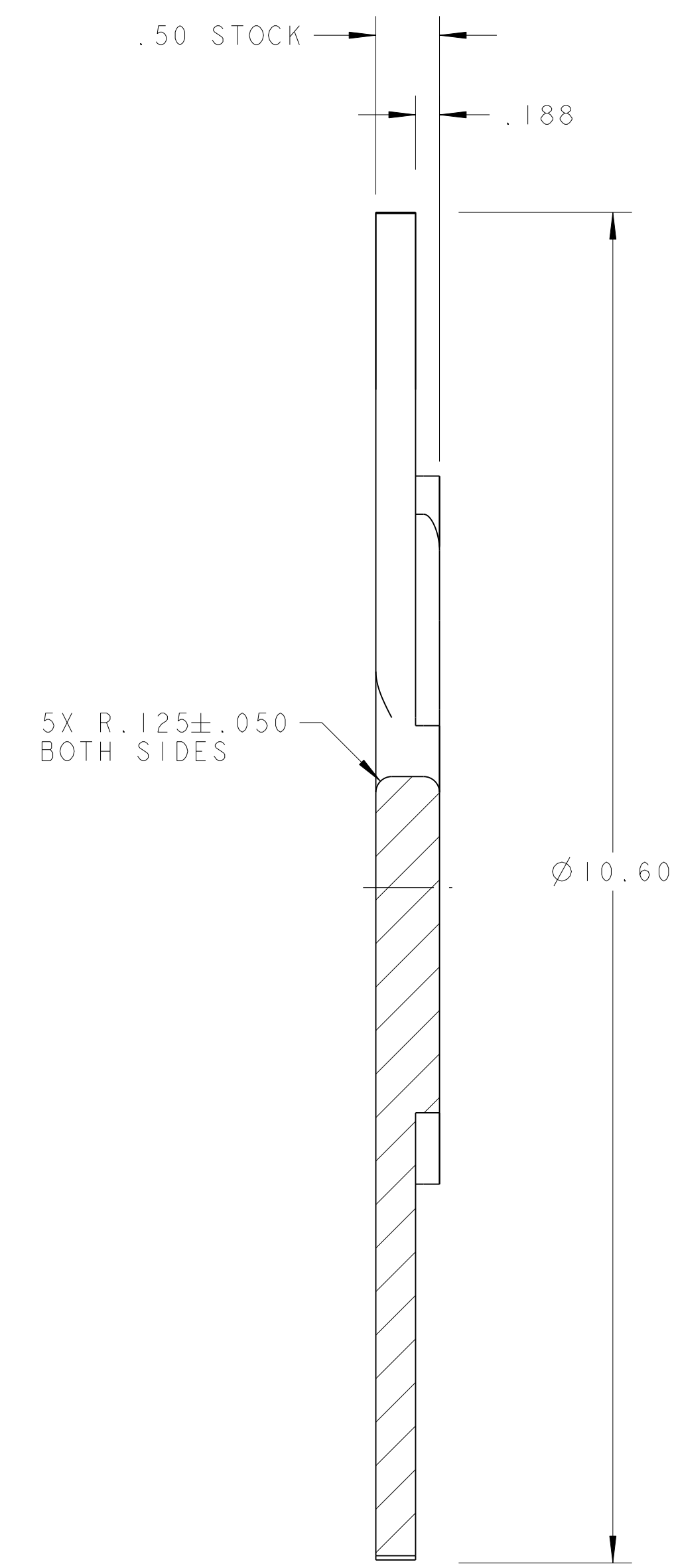
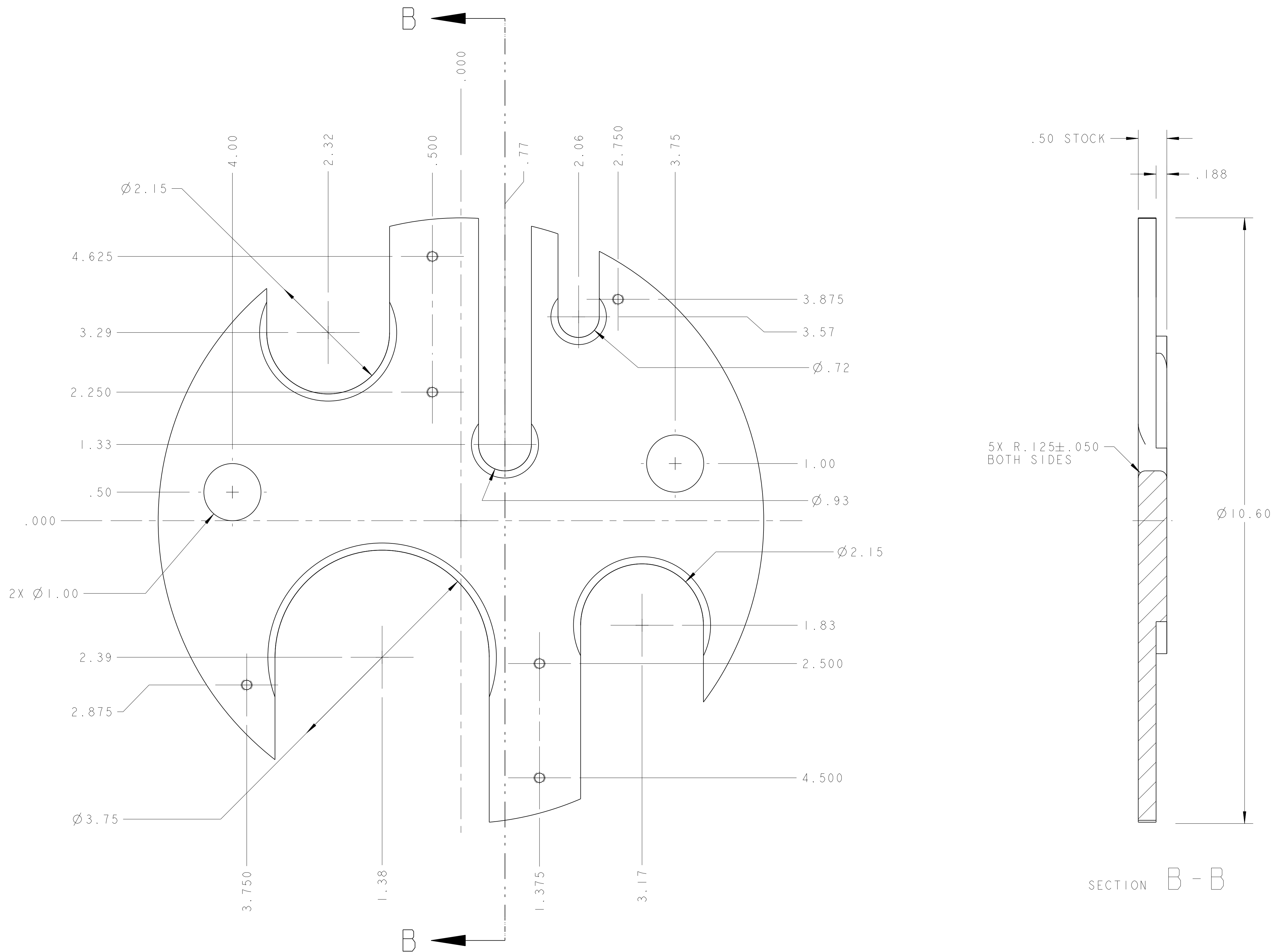


NOTES: UNLESS OTHERWISE SPECIFIED,

1. DIMENSIONS AND TOLERANCING PER ANSI Y14.5M-1982 UNITS ARE IN INCHES UNLESS OTHERWISE SPECIFIED.
2. USE OF SULFUR OR SILICONE BEARING OILS, LUBRICANTS, OR COOLANTS ARE STRICTLY PROHIBITED.
3. USE OF RESIN OR RUBBER BONDED ABRASIVES UNDER POWER IS STRICTLY PROHIBITED. USE VITREOUS BONDED ABRASIVES ONLY.
4. THIS IS A HIGH VACUUM COMPONENT. CLEAN AFTER MACHINING USING A NON-ETCHING ALKALI BASED SOLUTION.
5. PROTECT FINISHED PART BY BAGGING OR SIMILAR METHOD TO PROTECT AND MAINTAIN CLEANLINESS DURING SHIPMENT AND STORAGE.



SCALE 3/4



UNLESS OTHERWISE SPECIFIED			
FINISHES	TOLERANCES	ANGLES	EDGES
X.X ± 0.1	FRACTIONS ± 1/64	ANGLES ± 1.00°	BREAK EDGES .015 MAX. ON MACHINED WORK
X.XX ± 0.02	FRACTIONS ± 1/32	ANGLES ± 0.50°	REMOVE BURRS, WELD SPATTER & LOOSE SCALE
X.XXX ± 0.005	FINISHES 45°	ANGLES ± 0.25°	IN ACCORDANCE WITH ASME Y14.5M-1982
DO NOT SCALE PRINT			
THREADS ARE CLASS 2			
CHAMFER ENDS OF ALL SCREW THREADS 30°			
CUT ROUNDS, 1.5 THREAD BELLETS ON MACHINED THREADS			
REMOVE BURRS, WELD SPATTER & LOOSE SCALE			
IN ACCORDANCE WITH ASME Y14.5M-1982			

SUPPORT PLATE		NEMA 610		MAT. LOCATION	
DESCRIPTION		MATERIAL		MAT. LOCATION	
ERNEST ORLANDO LAWRENCE BERKELEY NATIONAL LABORATORY UNIVERSITY OF CALIFORNIA - BERKELEY					
LHC IR FEEDBOX CRYOGENICS SUPPORT PLATE					
SUPPORT PLATE					
REVISED	DWG. TYPE	SHOWN ON	SCALE	DO NOT SCALE PRINTS	
A	PART	-	1/1	SHEET 1 OF 1	
DESIGN ACCT. NO.	CATEGORY CODE	DWG. NO.	SIZE	REV.	
Z5LCE2	LH2003	2513856	A	A	