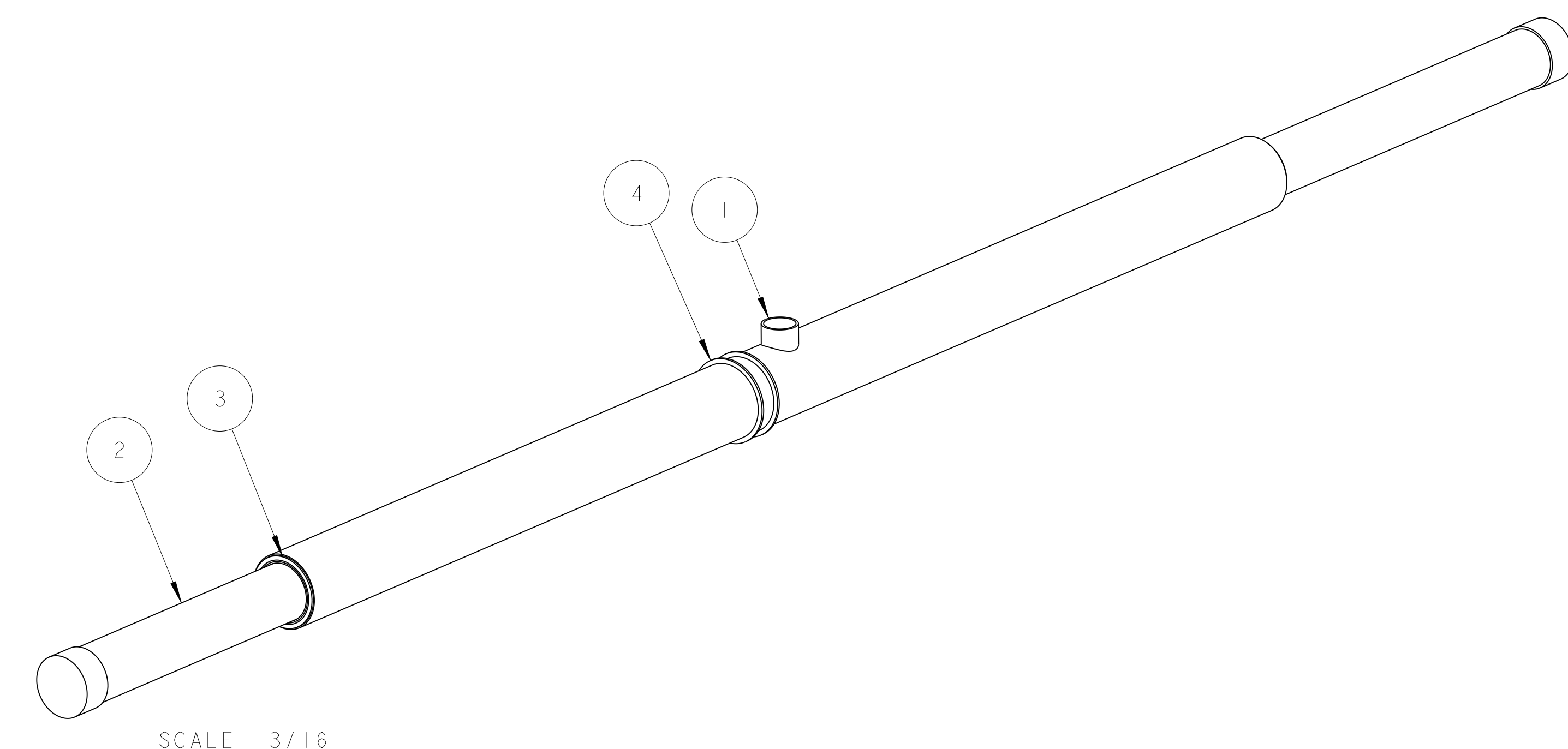
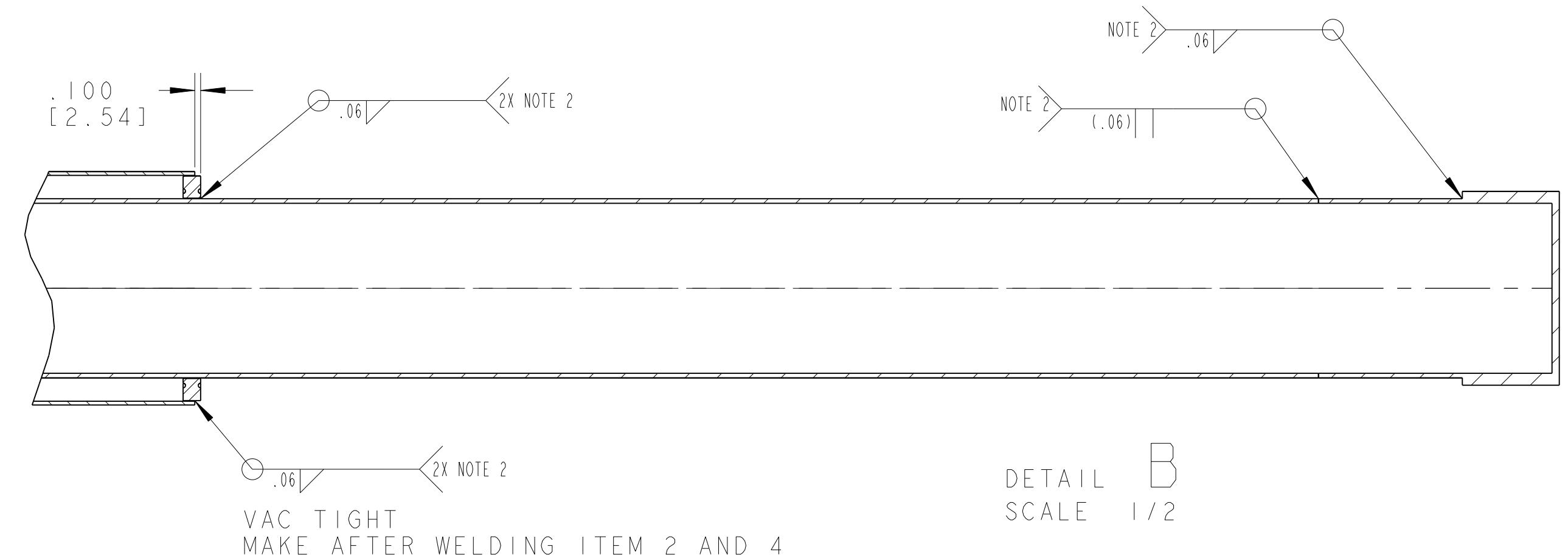
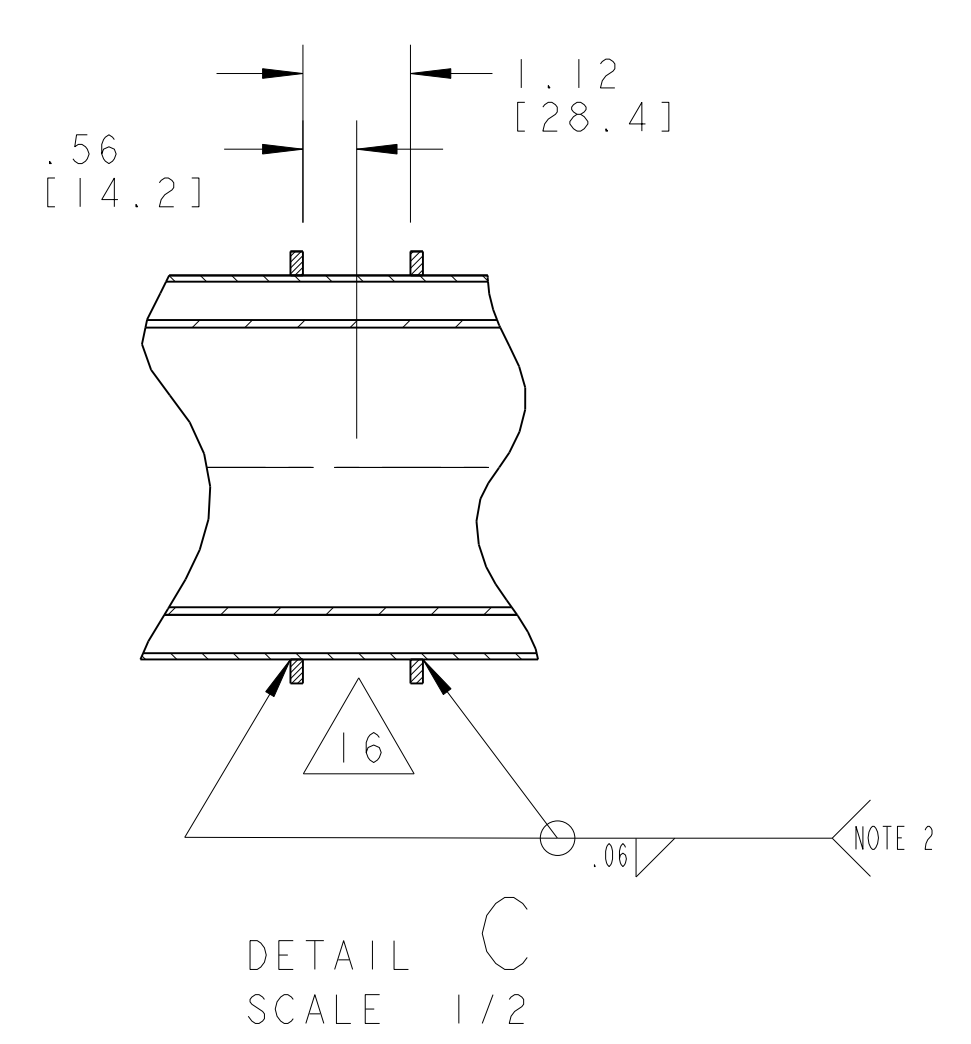
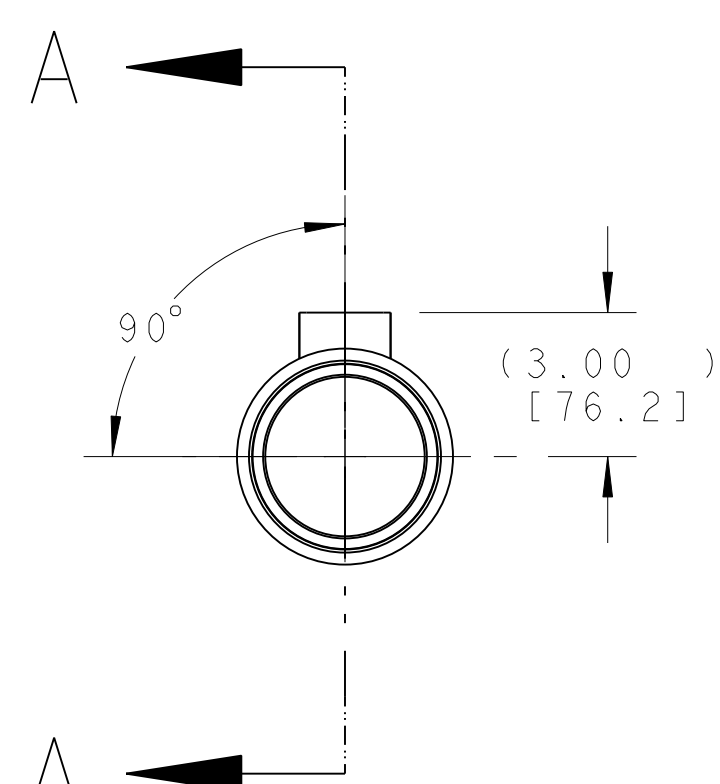
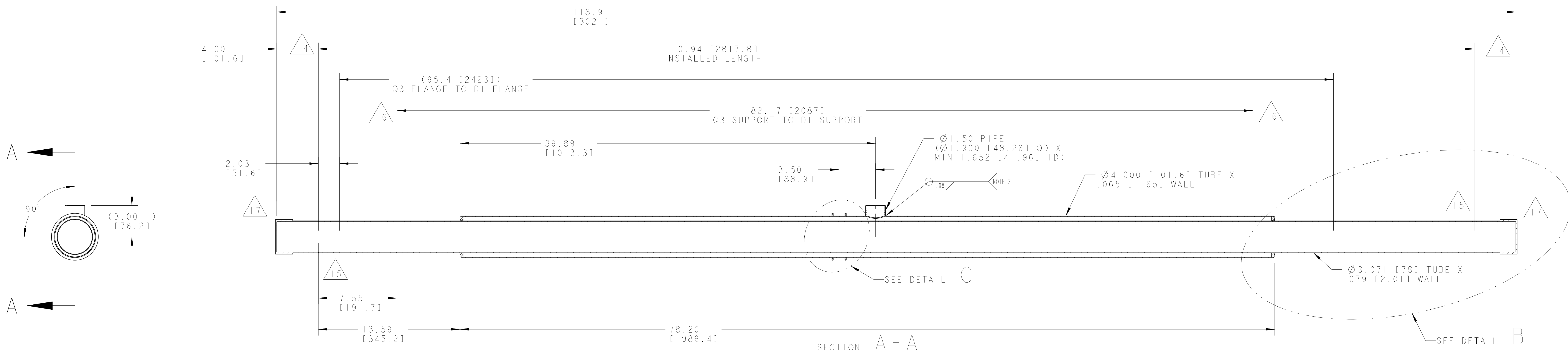


NOTES: (UNLESS OTHERWISE SPECIFIED)

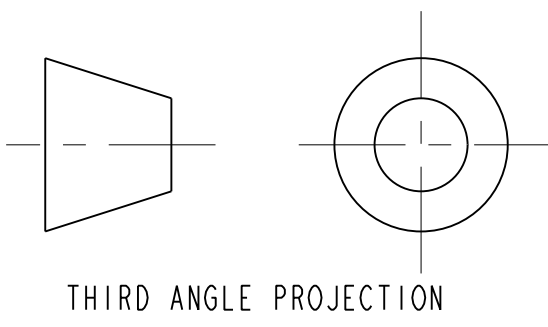
- 1. THIS IS A CRYOGENIC VACUUM COMPONENT.
- 2. WELDING PROCEDURE: PER VENDOR SPECIFICATION WITH LBNL APPROVAL.
- 3. CLEANING PROCEDURE : PER VENDOR SPECIFICATION WITH LBNL APPROVAL.
- 4. PACKAGING AND STORAGE PROCEDURE OF THE COMPONENTS: PER VENDOR SPECIFICATION WITH LBNL APPROVAL.
- 5. DIMENSIONS AND TOLERANCING PER ANSI Y14.5M-1982. UNITS ARE IN INCHES [mm] UNLESS OTHERWISE SPECIFIED.
- 6. USE OF SULFUR OR SILICONE BEARING OILS, LUBRICANTS, OR COOLANTS ARE STRICTLY PROHIBITED.
- 7. USE OF RESIN OR RUBBER BONDED ABRASIVES UNDER POWER IS STRICTLY PROHIBITED. USE VITREOUS BONDED ABRASIVES ONLY.
- 8. VENDOR SUGGESTED CHANGES TO WELD PREPS; SUBJECT TO LBNL APPROVAL.
- 9. FITTINGS MAY BE USED IN PLACE OF BENDS; SUBJECT TO LBNL APPROVAL.
- 10. VENDOR SUGGESTED CHANGES TO TOLERANCES TO FACILITATE FABRICATION OR ASSEMBLY; SUBJECT TO LBNL APPROVAL.
- 11. REMOVE ALL THE BURRS AND REAM THE ENDS FOR CIRCULARITY AND CLEAN ENDS.
- 12. TUBE END SURFACE MUST BE PERPENDICULAR TO THE TUBE AXIS WITHIN +/- .010.
- 13. PERFORM ACCEPTANCE TESTS PER SECTION 3.2 OF LBNL SPECIFICATION M856.
- 14. A MARK DESIGNATING THE INSTALLED LENGTH WILL BE UTILIZED DURING FINAL INSTALLATION OF THE DEEDBOX ASSEMBLY. MARK, SCRIBE OR ETCH THIS LOCATION IN A PERMANENT MANNER, SUBJECT TO LBNL APPROVAL, TO AN ACCURACY OF 0.063".
- 15. PROVIDE A MINIMUM LENGTH OF 4.0" OF STRAIGHT, SMOOTH PIPE ON THE INDICATED SIDE OF THE INSTALLED LENGTH MARK FOR PIPE WELDING DURING FINAL INSTALLATION OF THE FEEDBOX ASSEMBLY.
- 16. PIPE MUST BE STRAIGHT AND SMOOTH (NO BUMPS) FOR 0.5" ON EITHER SIDE OF THE CENTER-PLANE OF THE SUPPORT.
- 17. CAP BOTH ENDS OF PIPE AFTER ACCEPTANCE TESTS PER SECTION 3.2 OF LBNL SPECIFICATION M856.



SCALE 3/16



SCALE 1/2



ITEM	PART NO	REQD	DESCRIPTION	MATERIAL
4	251536	2	GUIDE RING	SS 304L
3	251534	2	JACKET WELD CAP	SS 304L
2	-	1	TUBE (DELIVERED BY CERNA)	-
1	-	1	NIPPLE, TUBE, PER ASTM A269	-

ITEM	PART NO	REQD	DESCRIPTION	MATERIAL
1	-	1	NIPPLE, TUBE, PER ASTM A269	-

REV	DATE	BY	CHK	ZONE	DATE
A	10-25-01	ARH	SPV		

ERNEST ORLANDO LAWRENCE
BERKELEY NATIONAL LABORATORY
 UNIVERSITY OF CALIFORNIA BERKELEY

LHC IR FEEDBOX
 CRYOGENICS
 V PIPE & JACKET ASSEMBLY

DWG. TYPE: ASSEM
 SCALE: 1/4
 SHEET 1 OF 1

PATENT CLEAR: Z5LCE2
 LHC2003