

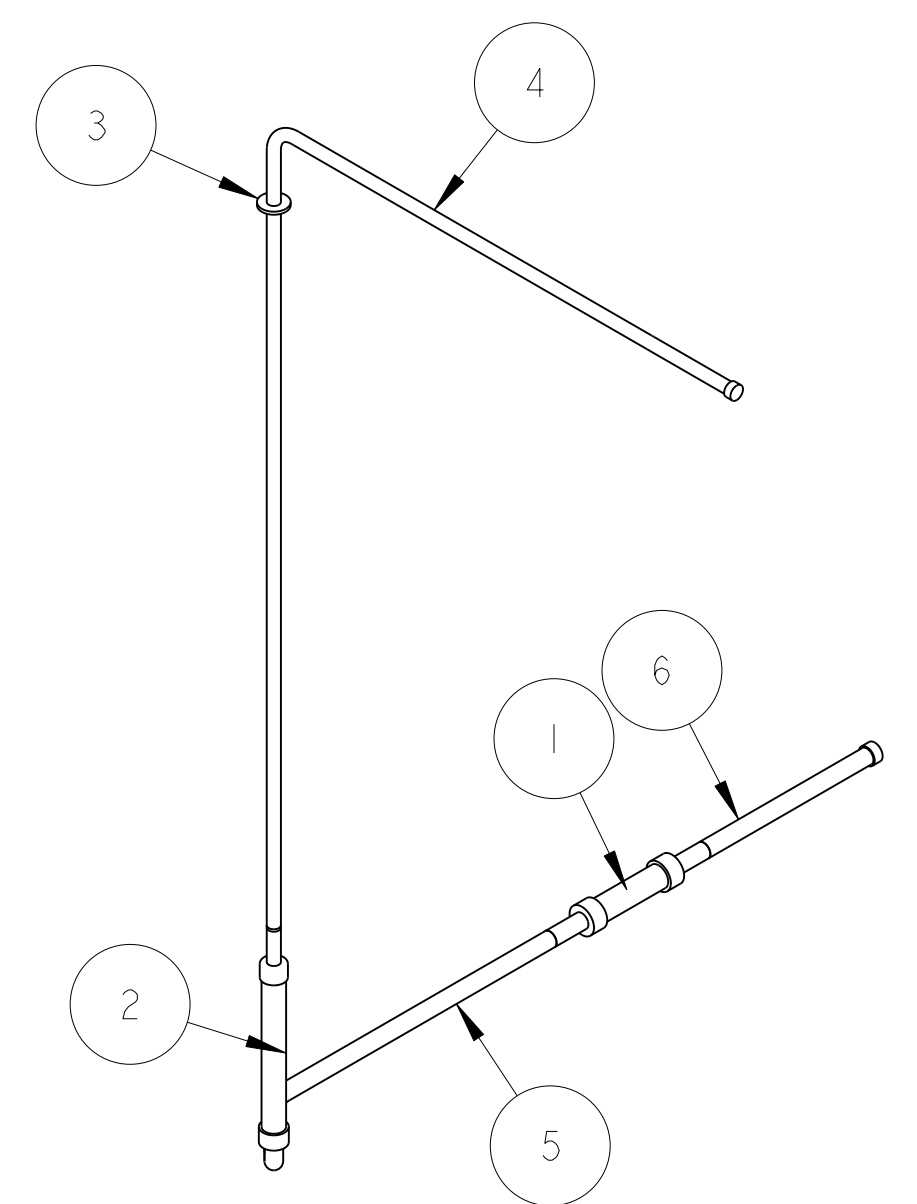
NAME: ARHARRIS OBJECT: 251217 DATE: 04-Dec-02 14:46:16

DWG. NO. 2512174 SIZE REV. B 1 SH. 1

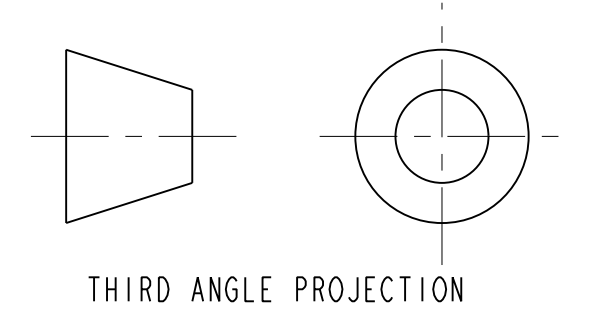
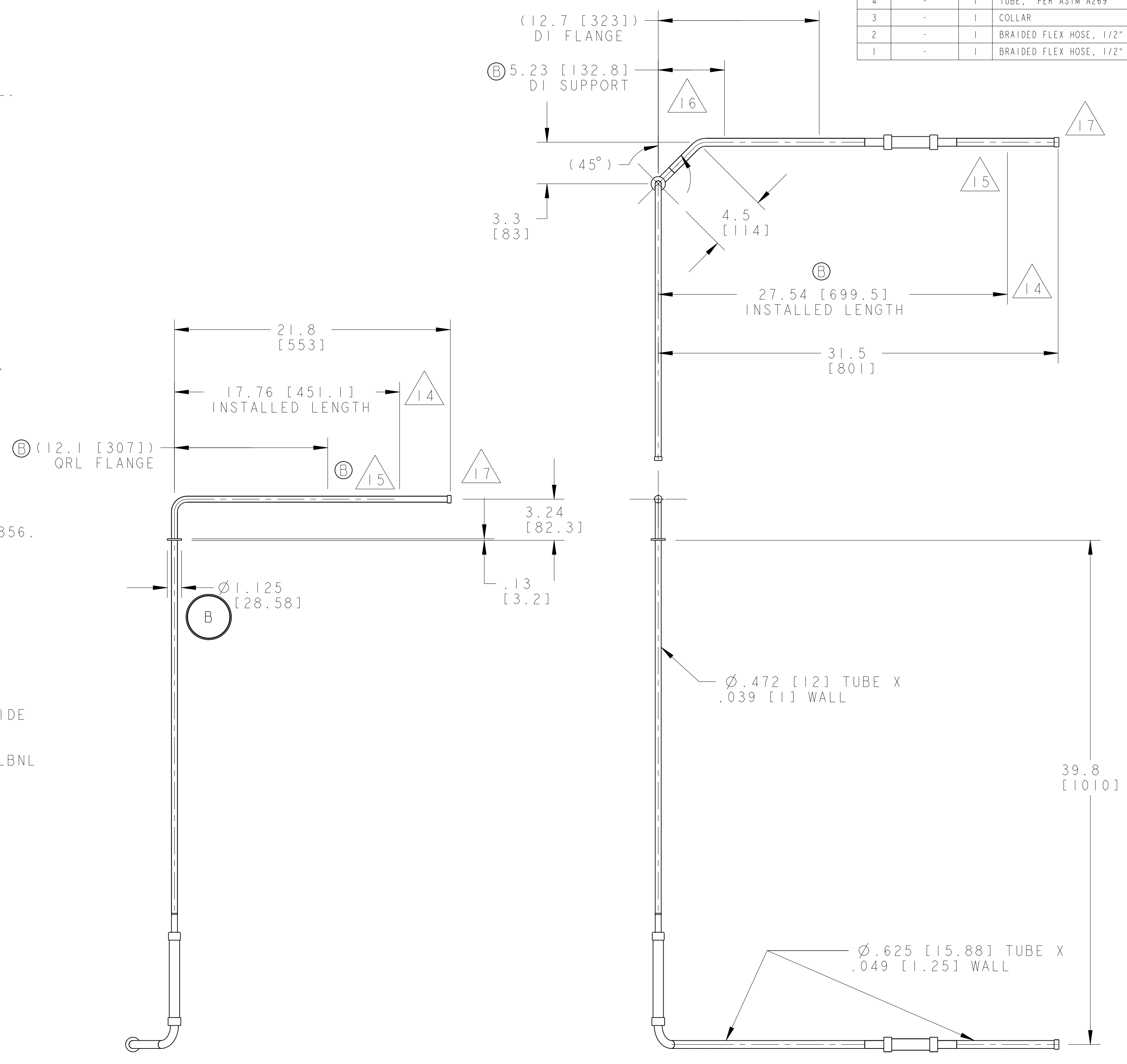
ITEM	PART NO	RECD	DESCRIPTION	MATERIAL
6	-	1	TUBE, PER ASTM A269	SS 304L
5	-	1	TUBE, PER ASTM A269	SS 304L
4	-	1	TUBE, PER ASTM A269	SS 304L
3	-	1	COLLAR	SS 304L
2	-	1	BRAIDED FLEX HOSE, 1/2" ID X 3.2" LL	SS 300 SERIES
1	-	1	BRAIDED FLEX HOSE, 1/2" ID X 3" LL	SS 300 SERIES

NOTES: (UNLESS OTHERWISE SPECIFIED)

- THIS IS A CRYOGENIC VACUUM COMPONENT.
- WELDING PROCEDURE: PER VENDOR SPECIFICATION WITH LBNL APPROVAL.
- CLEANING PROCEDURE: PER VENDOR SPECIFICATION WITH LBNL APPROVAL.
- PACKAGING AND STORAGE PROCEDURE OF THE COMPONENTS: PER VENDOR SPECIFICATION WITH LBNL APPROVAL.
- DIMENSIONS AND TOLERANCING PER ANSI Y14.5M-1982. UNITS ARE IN INCHES [mm] UNLESS OTHERWISE SPECIFIED.
- USE OF SULFUR OR SILICONE BEARING OILS, LUBRICANTS, OR COOLANTS ARE STRICTLY PROHIBITED.
- USE OF RESIN OR RUBBER BONDED ABRASIVES UNDER POWER IS STRICTLY PROHIBITED. USE VITREOUS BONDED ABRASIVES ONLY.
- VENDOR SUGGESTED CHANGES TO WELD PREPS; SUBJECT TO LBNL APPROVAL.
- FITTINGS MAY BE USED IN PLACE OF BENDS; SUBJECT TO LBNL APPROVAL.
- VENDOR SUGGESTED CHANGES TO TOLERANCES TO FACILITATE FABRICATION OR ASSEMBLY; SUBJECT TO LBNL APPROVAL.
- REMOVE ALL THE BURRS AND REAM THE ENDS FOR CIRCULARITY AND CLEAN ENDS.
- TUBE END SURFACE MUST BE PERPENDICULAR TO THE TUBE AXIS WITHIN +/- .010.
- PERFORM ACCEPTANCE TESTS PER SECTION 3.2 OF LBNL SPECIFICATION M856.
- A MARK DESIGNATING THE INSTALLED LENGTH WILL BE UTILIZED DURING FINAL INSTALLATION OF THE FEEDBOX ASSEMBLY. MARK, SCRIBE OR ETCH THIS LOCATION IN A PERMANENT MANNER, SUBJECT TO LBNL APPROVAL, TO AN ACCURACY OF ±0.063".
- PROVIDE A MINIMUM LENGTH OF 4.0" OF STRAIGHT, SMOOTH PIPE ON THE INDICATED SIDE OF THE INSTALLED LENGTH MARK FOR PIPE WELDING DURING FINAL INSTALLATION OF THE FEEDBOX ASSEMBLY.
- PIPE MUST BE STRAIGHT AND SMOOTH (NO BUMPS) FOR 0.5" ON EITHER SIDE OF THE CENTER-PLANE OF THE SUPPORT.
- CAP BOTH ENDS OF PIPE AFTER ACCEPTANCE TESTS PER SECTION 3.2 OF LBNL SPECIFICATION M856.



SCALE 5/32



REV	DWG	CHK	ZONE	DATE	CHANGES
B	RLM	DPO		11-20-02	CHANGED FLANGE DIAMETER, ADDED ORL FLANGE CALLOUT, ADDED NOTE 15 CALLOUT TO VIEW, CHANGED DESCRIPTION OF ITEMS 5 & 6, DELETED DIM ( )
A	ARH	DPO		9-17-02	INITIAL RELEASE

TOLERANCES		SHOP ORDERS	
X.X ± 0.1	FRAC. ± 1/64	ACCT NO.	SER NO.
X.XX ± 0.03	Angles ± 1.00°	NO. RECD	DATE ISSD
X.XXX ± 0.010	FINISH 125 $\sqrt{Ra}$	DATE RECD	DATE RECD

**ERNEST ORLANDO LAWRENCE**  
**BERKELEY NATIONAL LABORATORY**  
 UNIVERSITY OF CALIFORNIA - BERKELEY

LHC IR FEEDBOX  
 CRYOGENICS  
 PIPE, CC3

MICROFILMED:	DWG. TYPE	SHOWN ON	SCALE: 3/16	DO NOT SCALE PRINTS
	ASSEM	251226		
PATENT CLEAR:	DESIGN ACCT. NO.	CATEGORY CODE	DWG. NO.	REV.
	Z5LCE2	LH2003	2512174	B

**SHEET 1 OF 1**

**2512174**

**B**