

8

7

6

5

4

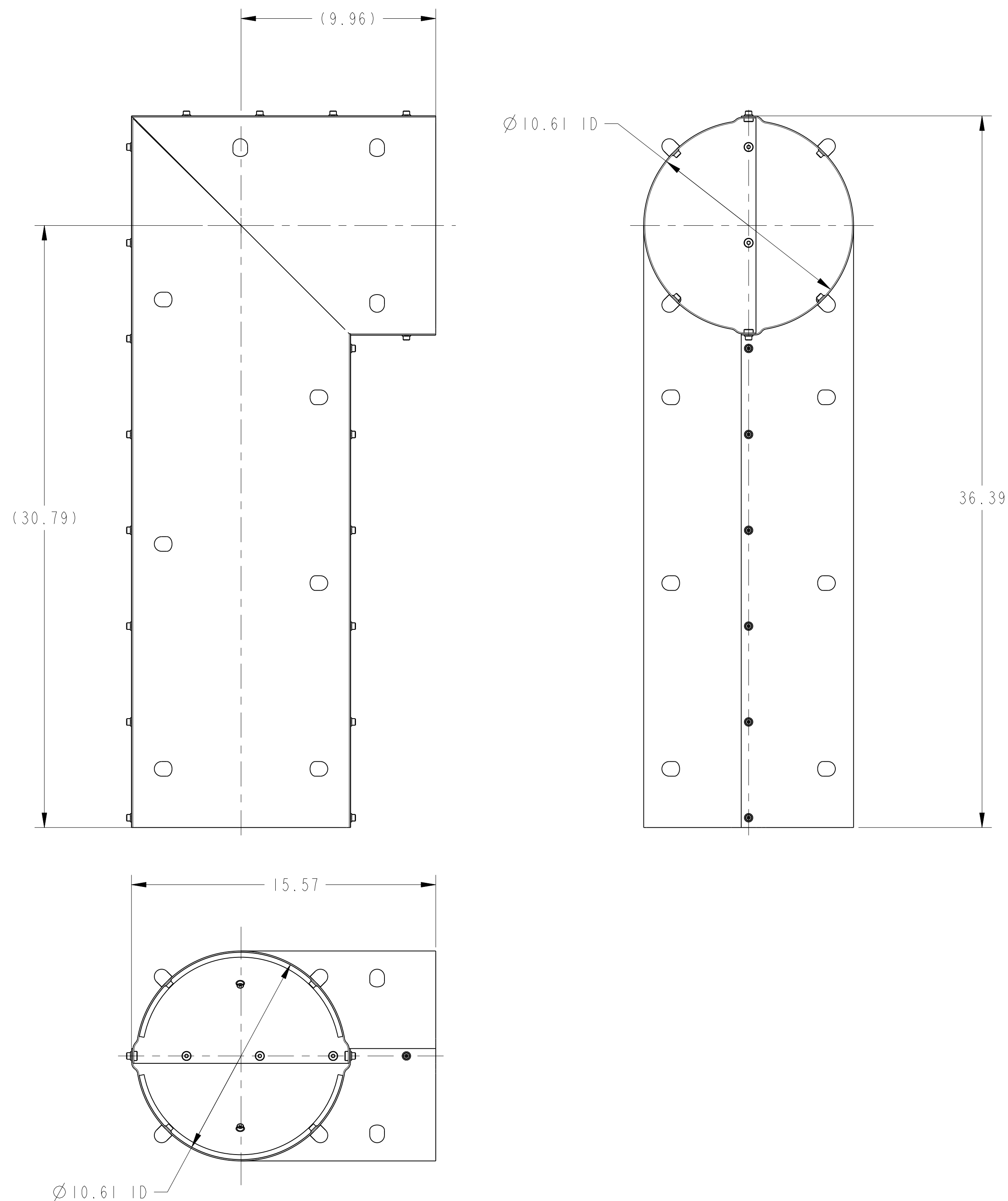
3

DWG. NO. 2511944 SIZE REV. B 1

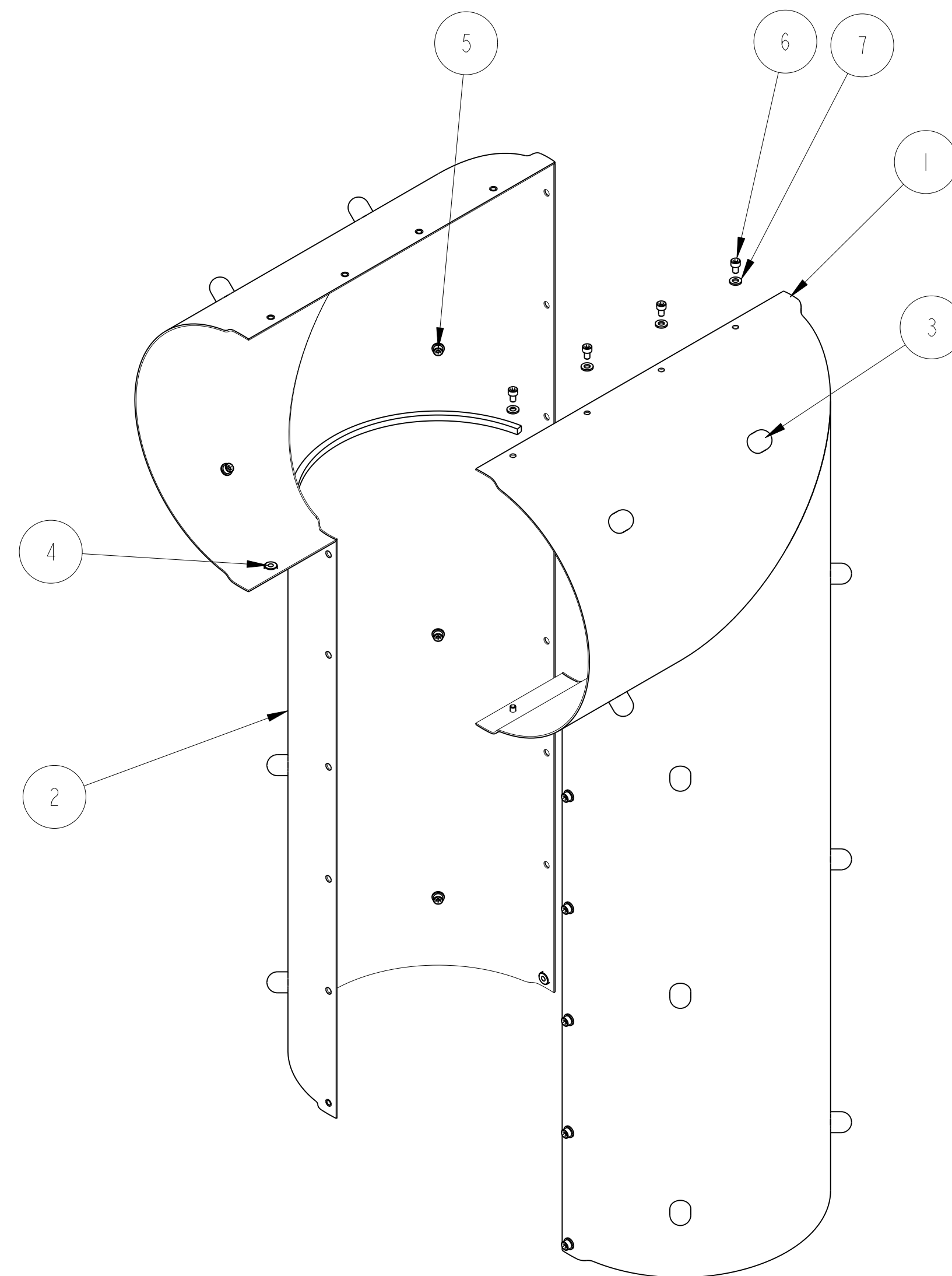
1

NOTES: (UNLESS OTHERWISE SPECIFIED)

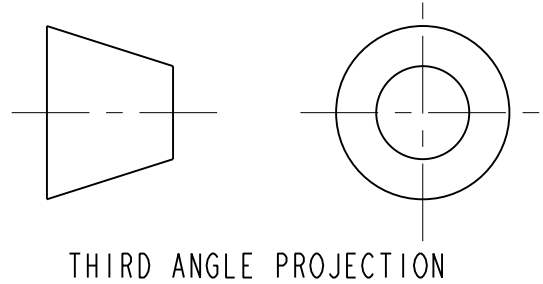
1. THIS IS A CRYOGENIC VACUUM COMPONENT.
2. CLEANING PROCEDURE : PER VENDOR SPECIFICATION WITH LBNL APPROVAL.
3. PACKAGING AND STORAGE PROCEDURE OF THE COMPONENTS: PER VENDOR SPECIFICATION WITH LBNL APPROVAL.
4. DIMENSIONS AND TOLERANCING PER ANSI Y14.5M-1982. UNITS ARE IN INCHES UNLESS OTHERWISE SPECIFIED.
5. USE OF SULFUR OR SILICONE BEARING OILS, LUBRICANTS, OR COOLANTS ARE STRICTLY PROHIBITED.
6. USE OF RESIN OR RUBBER BONDED ABRASIVES UNDER POWER IS STRICTLY PROHIBITED. USE VITREOUS BONDED ABRASIVES ONLY.



ITEM	PART NO	RECD	DESCRIPTION	MATERIAL
7	-	37	WASHER, M5, SILVER PLATE	-
6	-	19	SCH, MSX.8, 8LG, SILVER PLATED	SS 18-8
5	-	18	SCH, MSX.8, 10LG, SILVER PLATED, VENTED	SS 18-8
4	-	19	M5 CAPTIVE NUT, PEM AC-M5-1-SF	SS
3	251262	18	SPACER, 00S	NEMA G10
2	251259	1	CLAM SHELL 2, 00SD	CDA 101
1	251258	1	CLAM SHELL 1, 00SD	CDA 101



SCALE 0.250



TOLERANCES				UNLESS OTHERWISE SPECIFIED				SHOP ORDERS				SERIALS			
X.X ± 0.1				FRAC. ± 1/64				ACCT. NO.				NO.			
X.XX ± 0.03				Angles ± 1.00°				DEL. TO				DATE ISSD			
X.XXX ± 0.010				FINISH 125 _{μm}				SURFACE TREATMT				DATE RECD			
DO NOT SCALE PRINT				THREADS ARE CLASS 2				PROJECT TAG				METHOD			
CHAMFER ENDS OF ALL SCREW THREADS 30°				CUT ROUND, 1.5 THREAD RELIEF ON MACHINED THREADS				PROJECT NUMBER				PROJECT NAME			
BREAK EDGES .016 MAX. ON MACHINED WORK				REMOVE BURRS, WELD SPLATTER & LOOSE SCALE				DWG. BY R LA MANTIA				DATE 26-Feb-02			
IN ACCORDANCE WITH ASME Y14.5M & B46.1				INITIAL RELEASE				CHK BY Jon Zbasnik				DATE 21-Apr-02			
REV DWG CHK ZONE DATE				CHANGES				APR BY Jon Zbasnik				DATE 21-Apr-02			

ERNEST ORLANDO LAWRENCE BERKELEY NATIONAL LABORATORY UNIVERSITY OF CALIFORNIA - BERKELEY			
LHC IR FEEDBOX VACUUM THERMAL SHIELD JUMPER, JC2			
MICROFILMED:	DWG. TYPE	SHOWN ON	SCALE: 0.250
	ASSEM		DO NOT SCALE PRINTS
PATENT CLEAR:	DESIGN ACCT. NO.	CATEGORY CODE	DWG. NO.
	Z5LCE2	LH2002	2511944
			SIZE REV.
			B

8

7

6

5

4

3

2

1