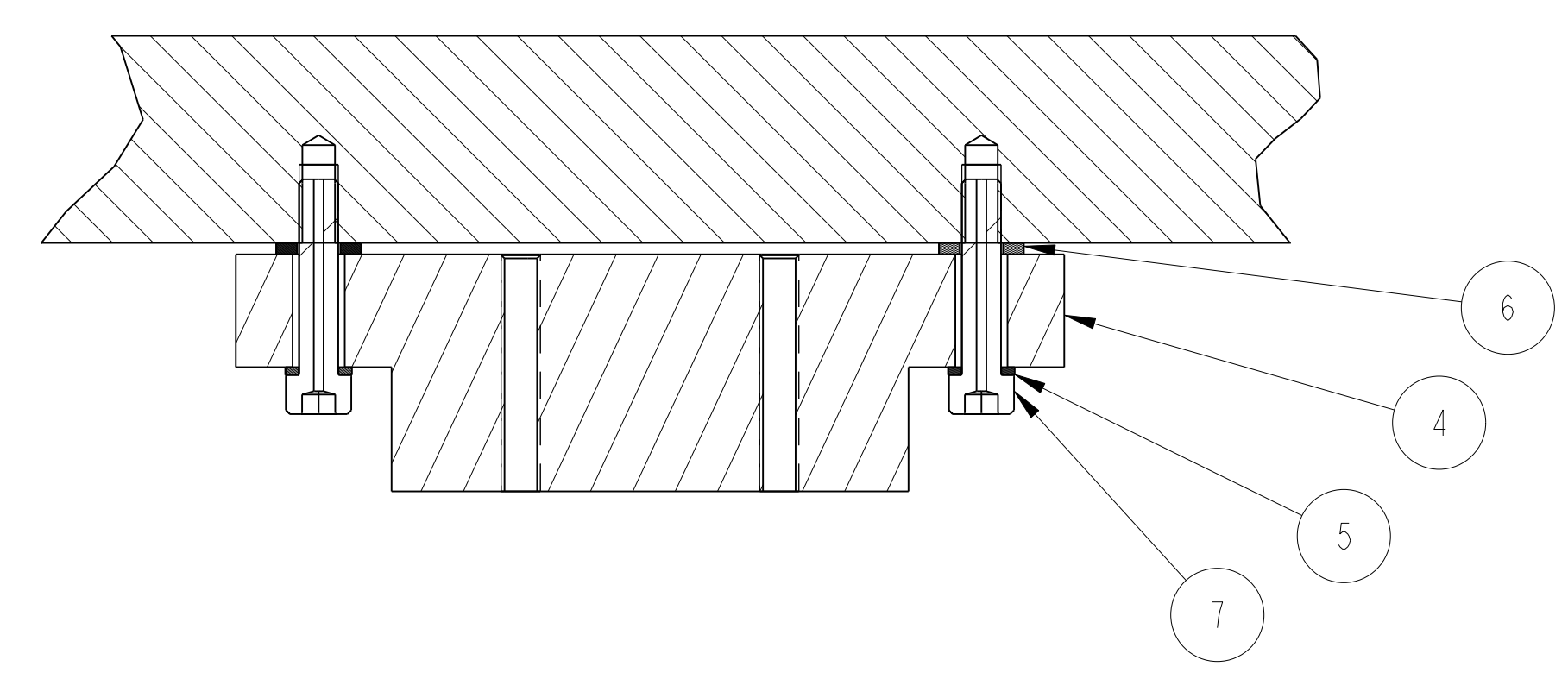
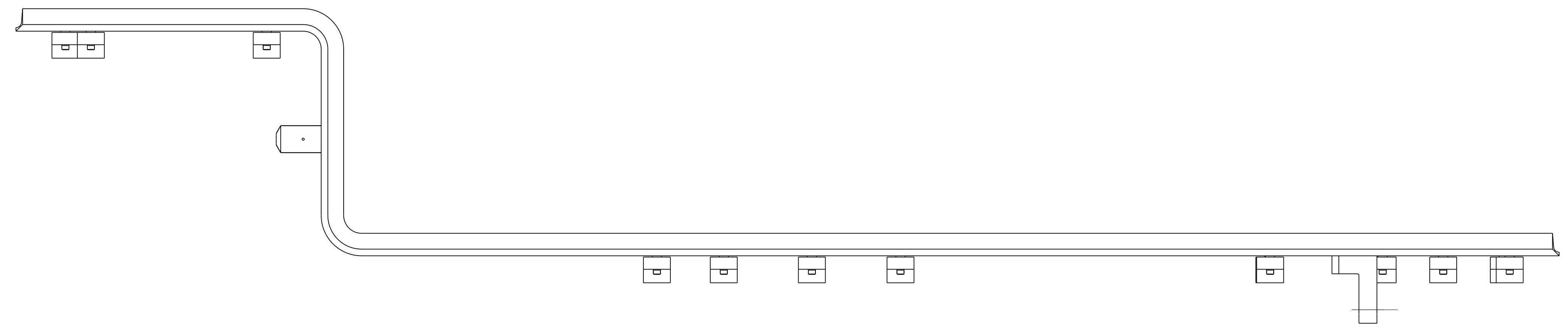
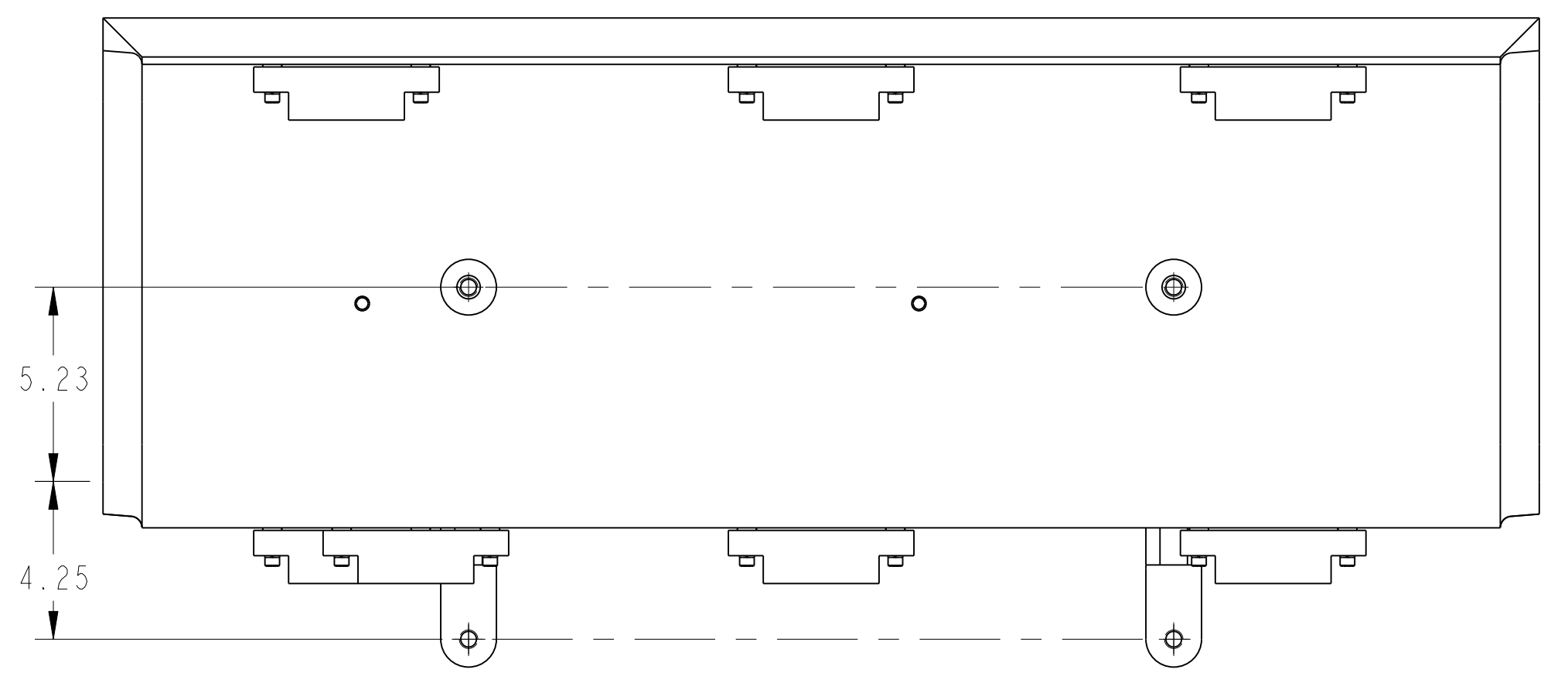
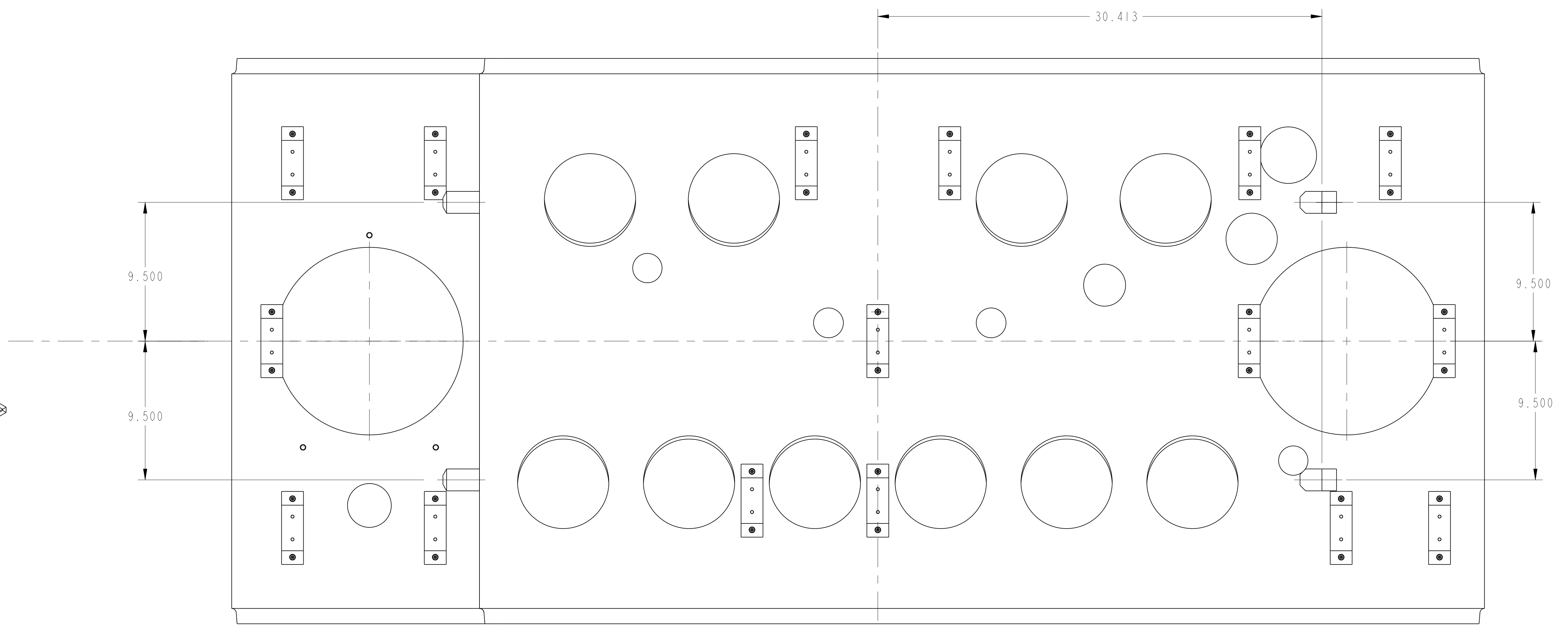
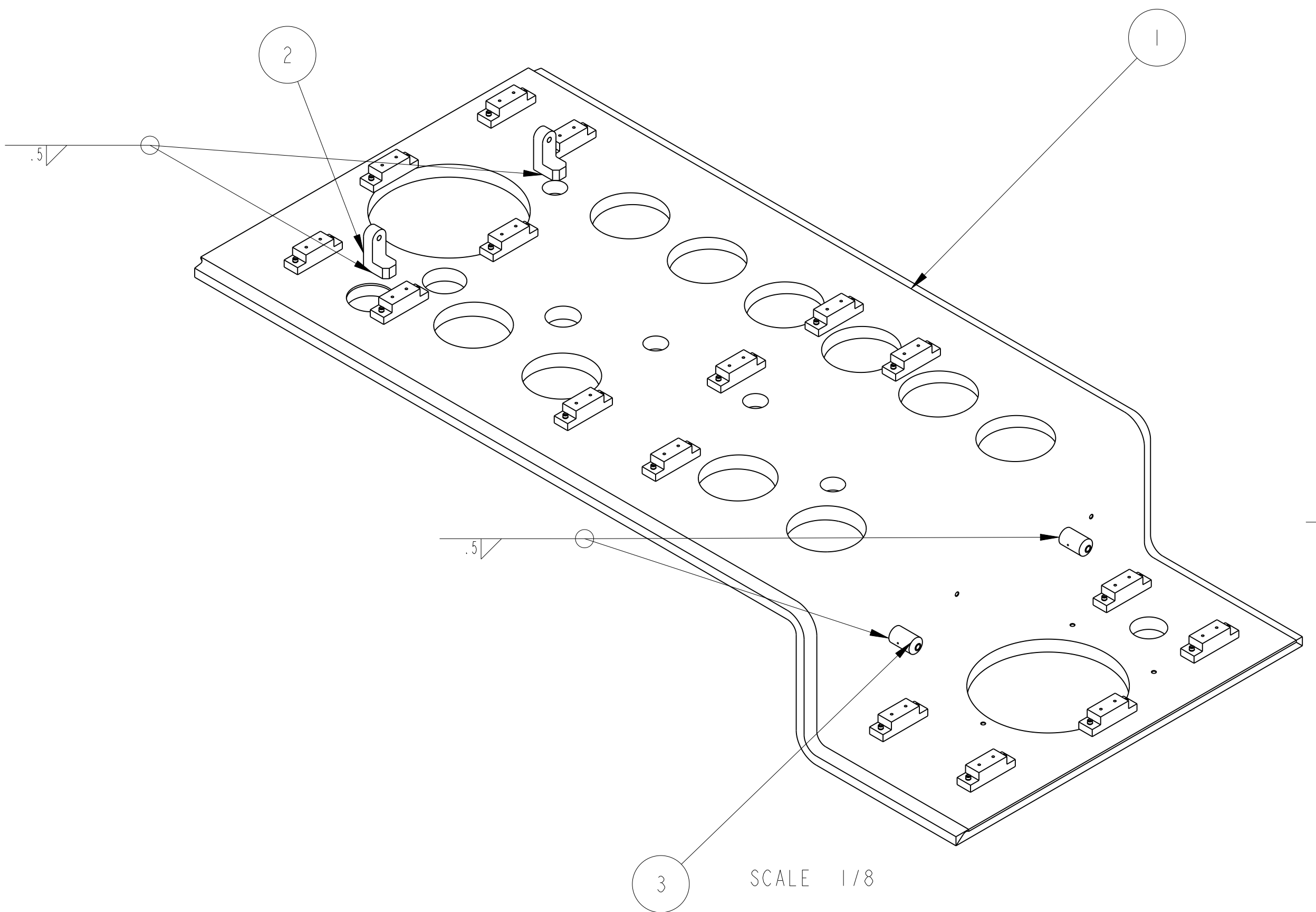


D



SECTION A-A
SCALE 1/1

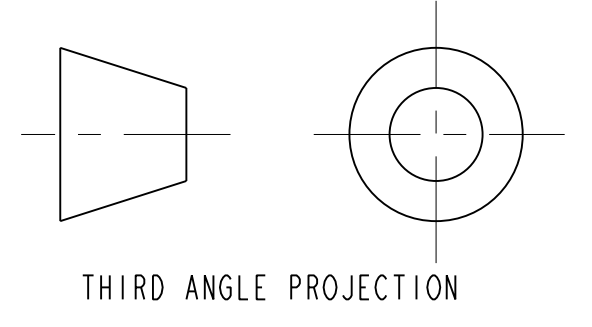
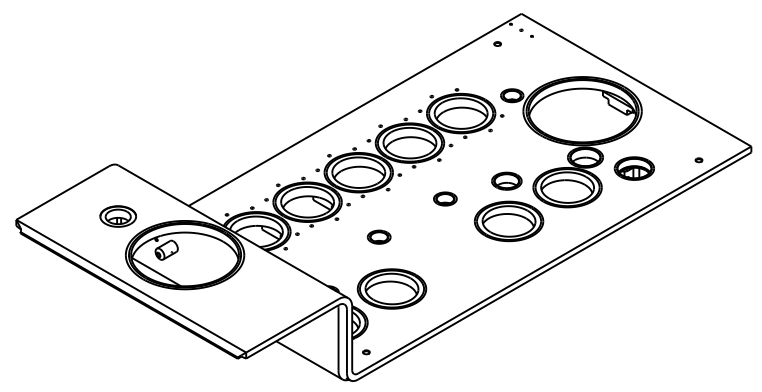
C



B

A

- NOTES: UNLESS OTHERWISE SPECIFIED,
- DIMENSIONS AND TOLERANCING PER ANSI Y14.5M-1982 UNITS ARE IN INCHES UNLESS OTHERWISE SPECIFIED.
 - USE OF SULFUR OR SILICONE BEARING OILS, LUBRICANTS, OR COOLANTS ARE STRICTLY PROHIBITED.
 - USE OF RESIN OR RUBBER BONDED ABRASIVES UNDER POWER IS STRICTLY PROHIBITED. USE VITREOUS BONDED ABRASIVES ONLY.
 - VENDOR WELD PROCEDURE SUBJECT TO LBNL APPROVAL.
 - ESTIMATED WEIGHT = 1,130 LBS



REV	DWG	CHK	DATE	CHANGES
B	JDRDPO		11/17/02	GRAPHICS UPDATES
A	JDRDPO		08/17/00	INITIAL RELEASE

UNLESS OTHERWISE SPECIFIED	
TOLERANCES	X.X ± 0.1 FRACTION ± 1/64
	X.XX ± 0.03 ANGLES ± 1.00°
	X.XXX ± 0.010 FINISH 125 μm
DO NOT SCALE PRINT	
THREADS ARE CLASS 2	
CHAMFER ENDS OF ALL SCREW THREADS 30°	
BREAK EDGES .015 MAX. ON MACHINED WORK	
REMOVE BURRS, WELD SPATTER & LOOSE SCALE	
IN ACCORDANCE WITH ASME Y14.5M-1994	

SHOP ORDERS		DATE	BY
NO.	DATE	BY	NO.
1	04-APR-02	JON ZBASNIK	32
2	04-APR-02	JON ZBASNIK	32

ERNEST ORLANDO LAWRENCE
BERKELEY NATIONAL LABORATORY
UNIVERSITY OF CALIFORNIA - BERKELEY

VACUUM
LHC IR FEEDBOX

TOP PLATE WELDMENT IP2, 8 LEFT

SCALE: 1/4

ASSEMBLY SHEET 1 OF 1

DWG. NO. 251137
REV. 1

251136

ITEM	PART NO.	REQD	DESCRIPTION	MATERIAL
7	-	32	SCH, MXX1, 30 LG, VENTED, SILVER PLATED	SS 18-8
6	-	32	WASHER, M6	SS
5	-	32	LOCK WASHER, M6	SS
4	251081	16	SPACER	NEMA G10
3	25M861	2	STRUT BOSS	304L SS
2	25M854	2	STRUT BRACKET	304L SS
1	251134	1	TOP PLATE DFBX C & S, IP 2 & 8 LEFT	304L SS

251136 B 1