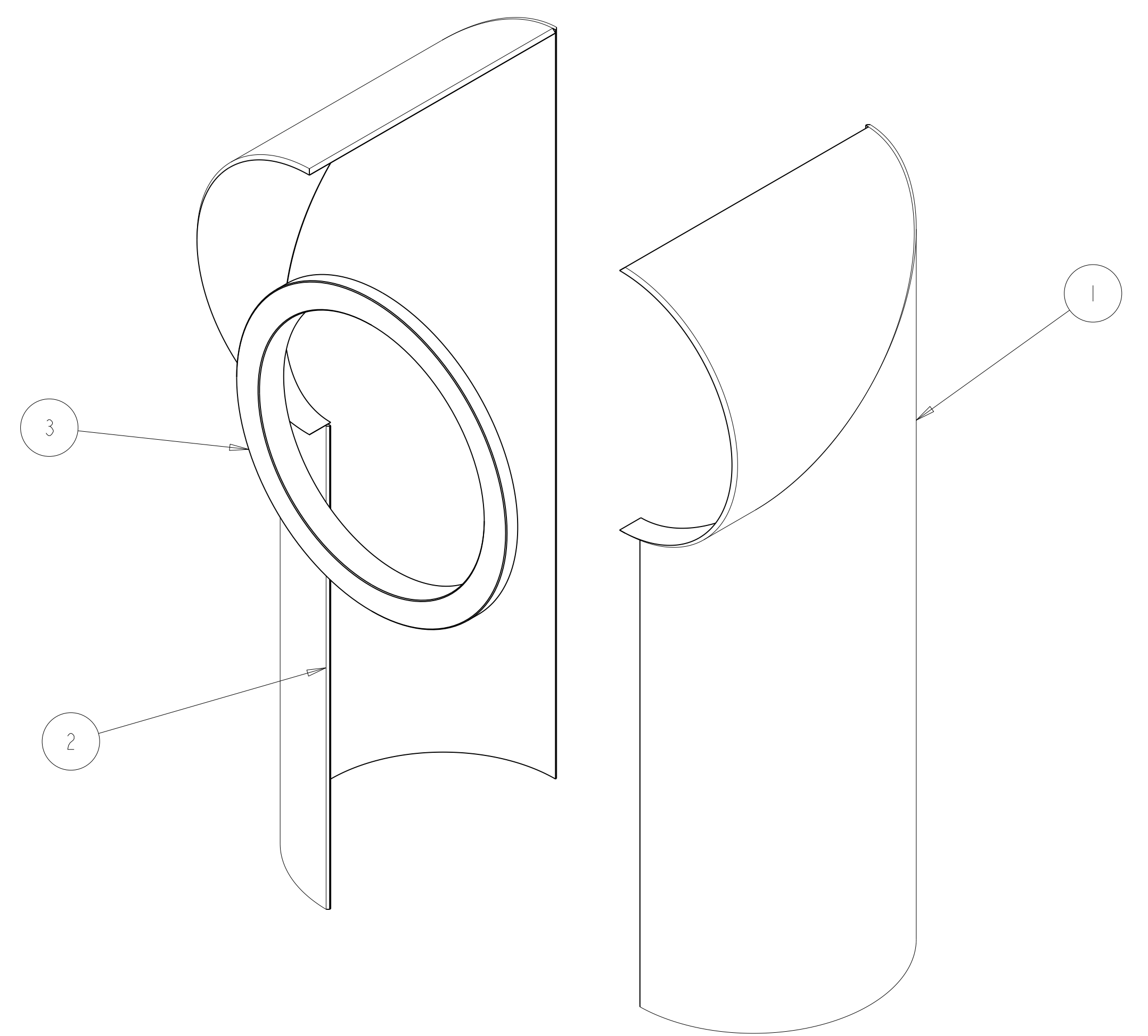
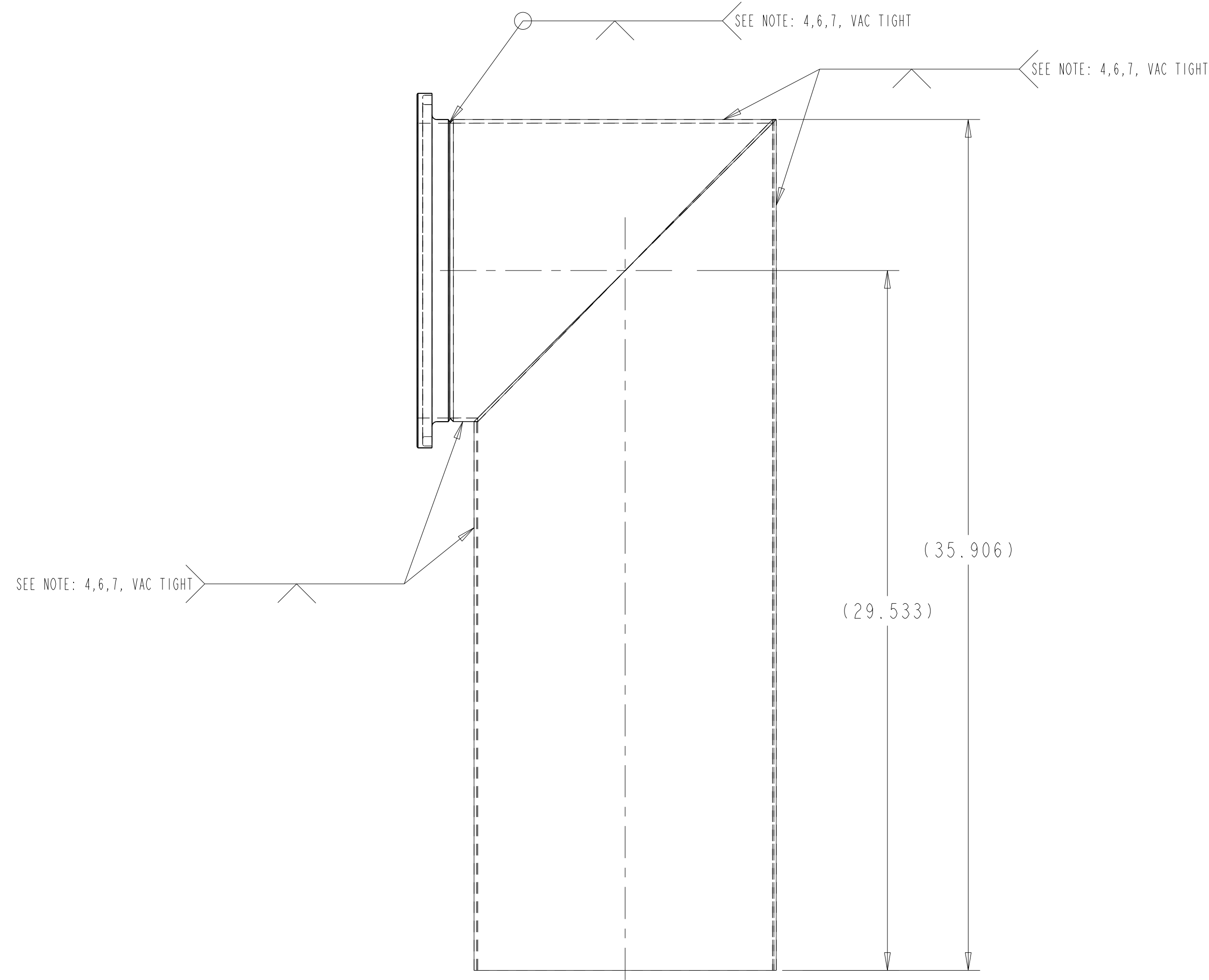
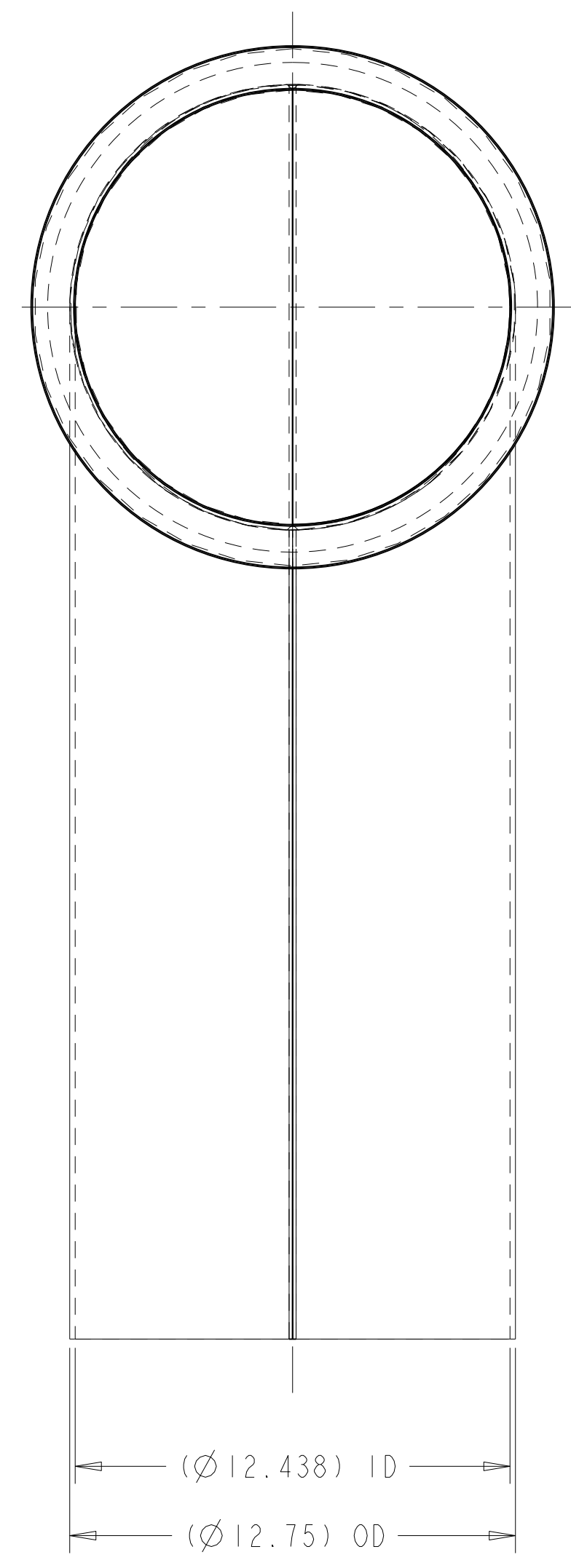
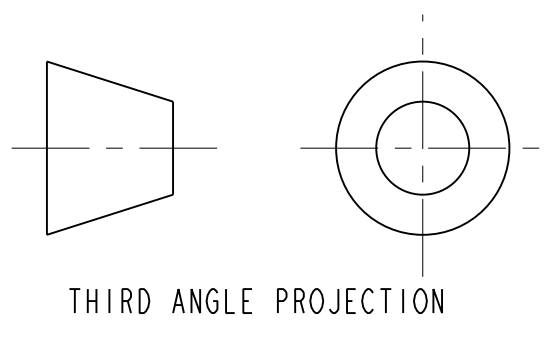


ITEM	PART NO	RECD	DESCRIPTION	MATERIAL
3	251169		ORL CHIMNEY FLANGE	304L SS
2	251323		ENCLOSURE CHIMNEY HALF 2, JC2	304L SS
1	251324		ENCLOSURE CHIMNEY HALF 1, JC2	304L SS



- NOTES: UNLESS OTHERWISE SPECIFIED,
- DIMENSIONS AND TOLERANCING PER ANSI Y14.5M-1982 UNITS ARE IN INCHES UNLESS OTHERWISE SPECIFIED.
  - USE OF SULFUR OR SILICONE BEARING OILS, LUBRICANTS, OR COOLANTS ARE STRICTLY PROHIBITED
  - USE OF RESIN OR RUBBER BONDED ADRASIVES UNDER POWER IS STRICTLY PROHIBITED. USE VITREOUS BONDED ABRASIVES ONLY.
  - CLEAN AFTER MACHINING PER VENDOR SPECIFICATION; SUBJECT TO LBNL APPROVAL.
  - VENDOR SUGGESTED CHANGES TO WELD PREPS; SUBJECT TO LBNL APPROVAL.
  - PERFORM ALL WELDS AT THE TOP ASSEMBLY.
  - ALL VACUUM WELDS TO BE CONTINUOUS FUSION WELDS UTILIZING THE TIG PROCESS AND DONE IN A CLEAN FACILITY. NO FILLER ROD ALLOWED.
  - PROTECT FINISHED PART BY BAGGING OR SIMILAR METHOD TO PROTECT AND MAINTAIN CLEANLINESS DURING SHIPMENT AND STORAGE.
  - VENDOR SUGGESTED CHANGES TO TOLERANCES TO FACILITATE ASSEMBLY; SUBJECT TO LBNL APPROVAL
  - ESTIMATED WEIGHT = 55 LBS



REV	DWG	CHK	ZONE	DATE	CHANGES
B	JDR	DPO		10-28-02	CHANGED MATERIAL CALLOUT ITEM 2
A	RLM	DPO		10-4-02	INITIAL RELEASE

TOLERANCES		UNLESS OTHERWISE SPECIFIED		SHOP ORDERS		SER. NO.
X.X ± 0.1	FRAC. ± 1/64			ACCT. NO.	NO.	-
X.XX ± 0.01	Angles ± 1.00°			DATE ISSD	DATE RECD	-
X.XXX ± 0.005	FINISH 125 $\sqrt{Ra}$			DEL. DATE	DEL. DATE	-
DO NOT SCALE PRINT		THREADS ARE CLASS 2		SURFACE TREATMT		
CHAMFER ENDS OF ALL SCREW TREADS 30°		CUT ROUND, 1.5 THREAD RELIEF ON MACHINED THREADS		IDENT. METHOD		
BREAK EDGES .016 MAX. ON MACHINED WORK		REMOVE BURRS, WELD SPLATTER & LOOSE SCALE		PROJECT TAG		
IN ACCORDANCE WITH ASME Y14.5M & B46.1				PROJECT NUMBER		
				PROJECT NAME		
				DWG. BY: R LA MANTIA		DATE: 28-Nov-01
				CHK. BY: Jon Zbasnik		DATE: 21-Apr-02
				APP. BY: Jon Zbasnik		DATE: 21-Apr-02

**ERNEST ORLANDO LAWRENCE  
BERKELEY NATIONAL LABORATORY**  
UNIVERSITY OF CALIFORNIA - BERKELEY

LHC IR FEEDBOX  
VACUUM  
ENCLOSURE JUMPER, JC2

MICROFILMED:	DWG. TYPE	SHOWN ON	SCALE: 0.250	DO NOT SCALE PRINTS
	ASSEM	VARIOUS		
PATENT CLEAR:	DESIGN ACCT. NO.	CATEGORY CODE	DWG. NO.	SIZE
	Z5LCE2	LH2002	2511674	B

**SHEET 1 OF 1**