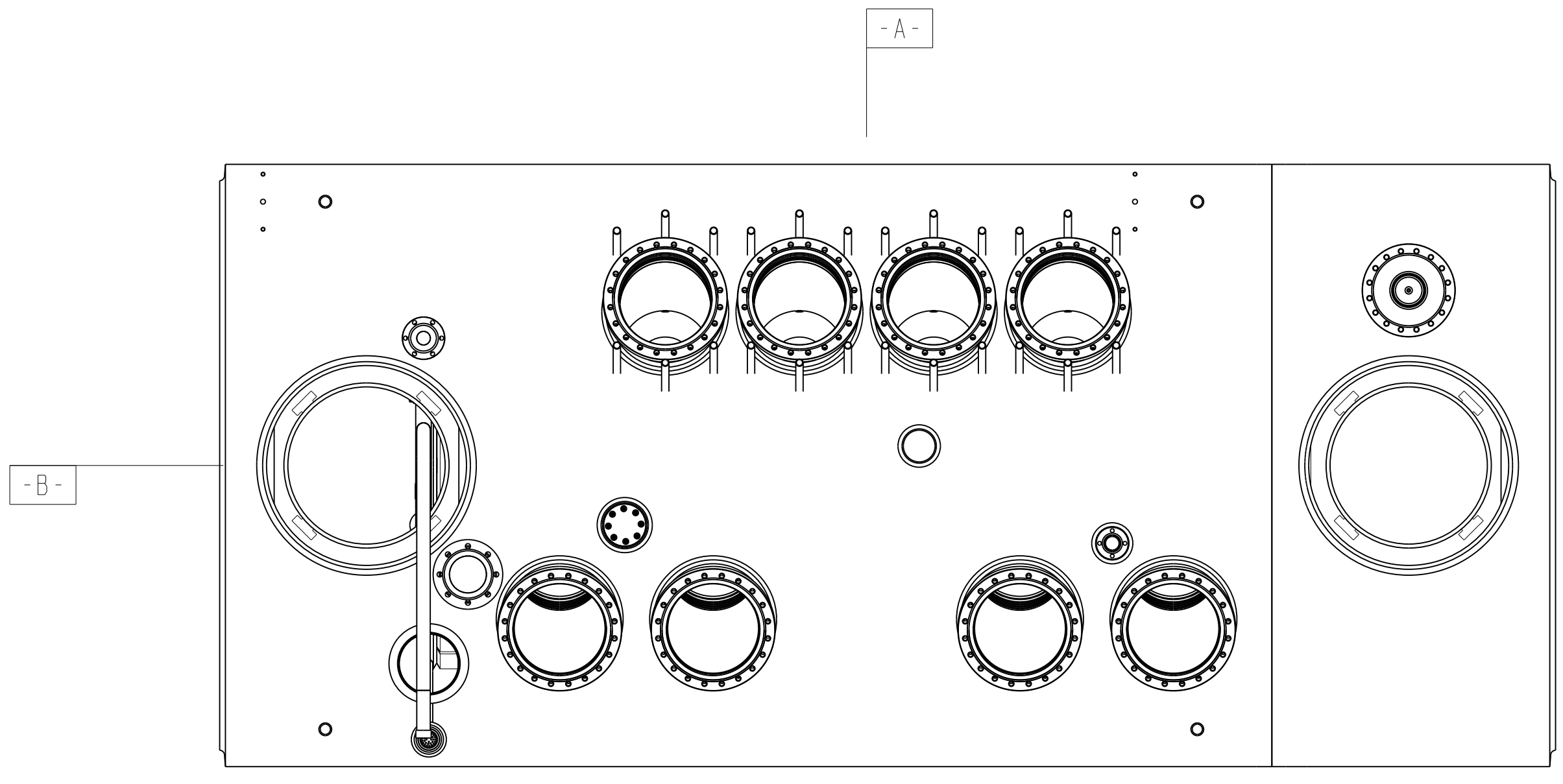


D

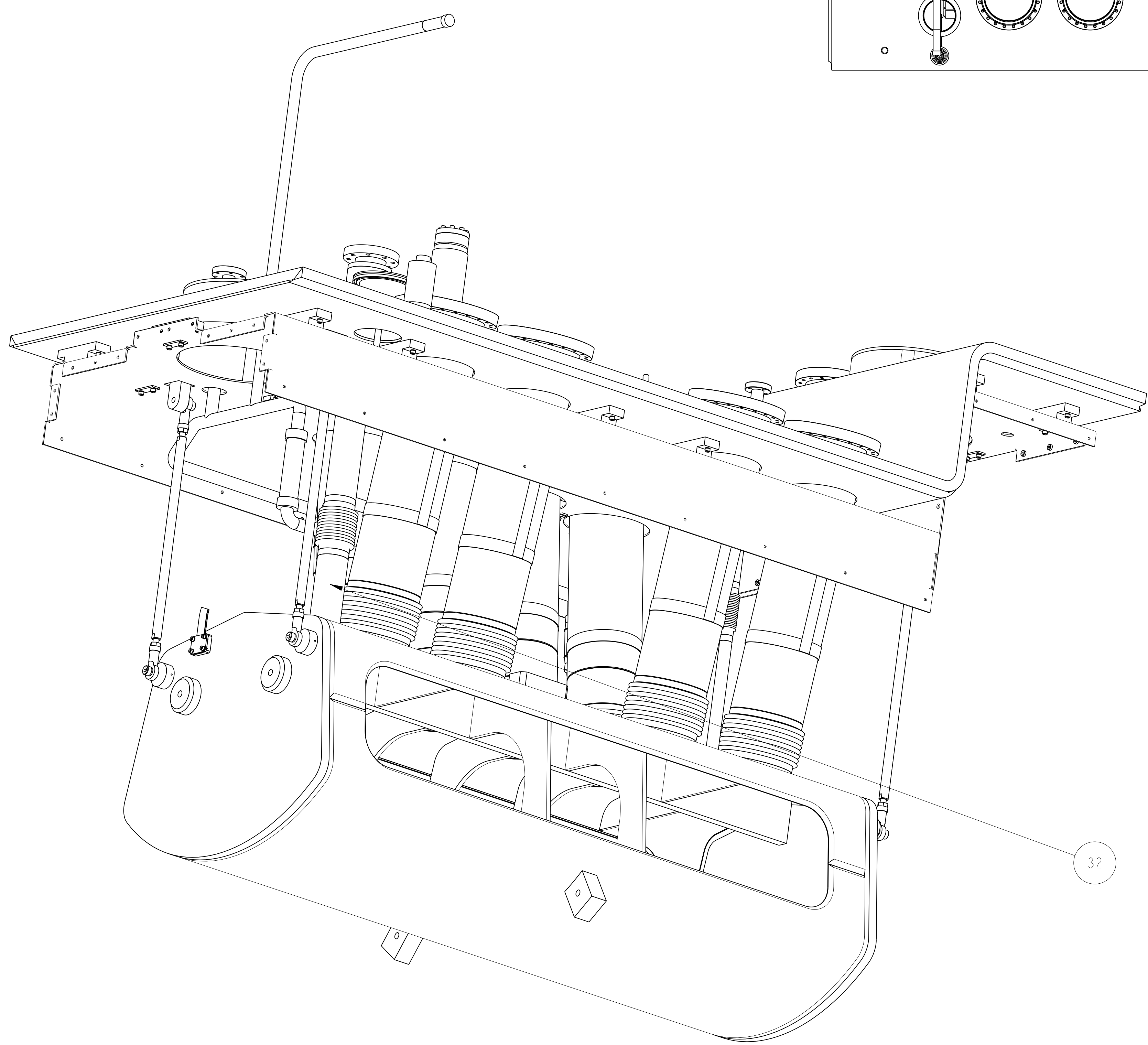
D



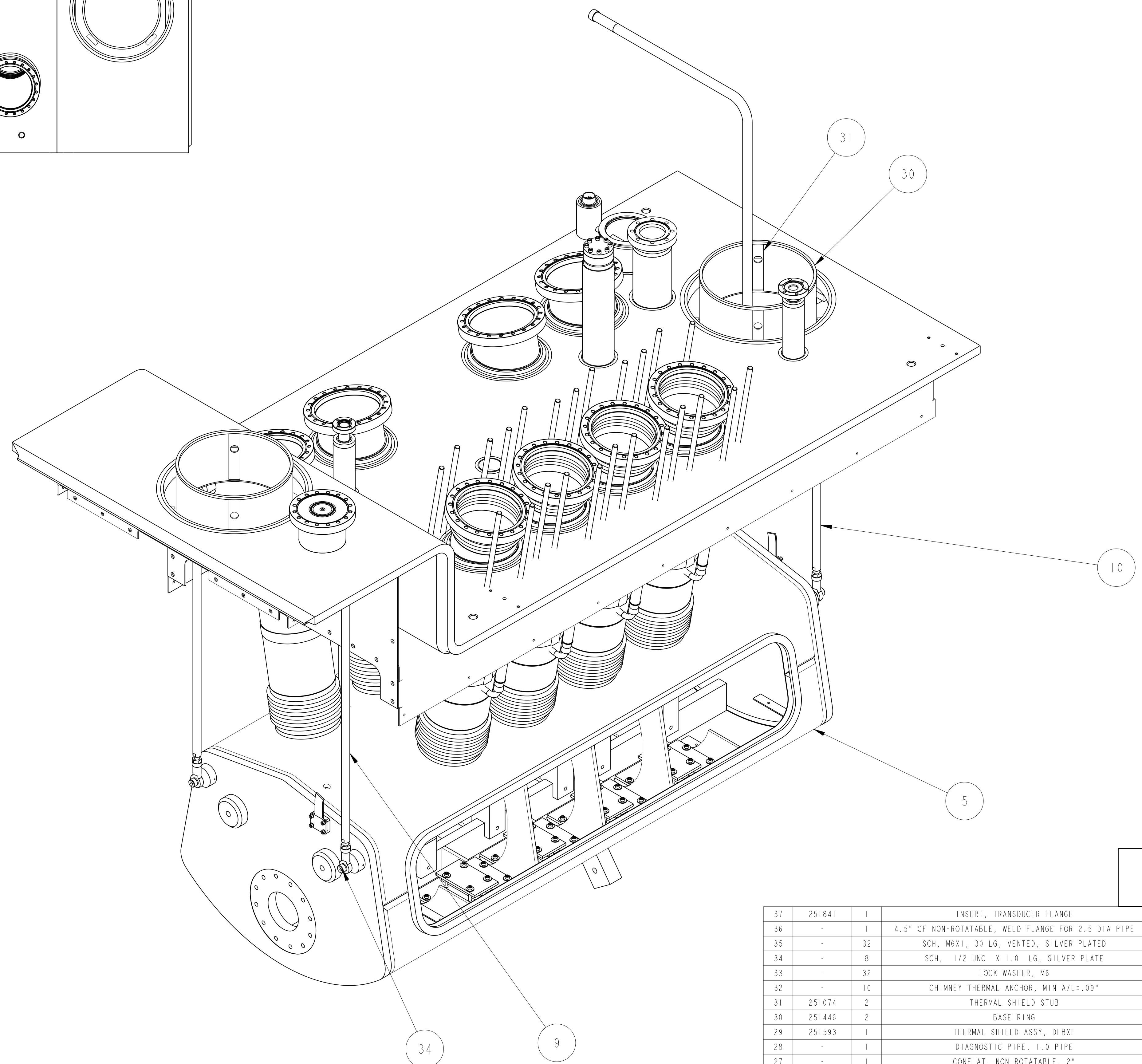
SCALE 1/8

C

C



SCALE 3/16

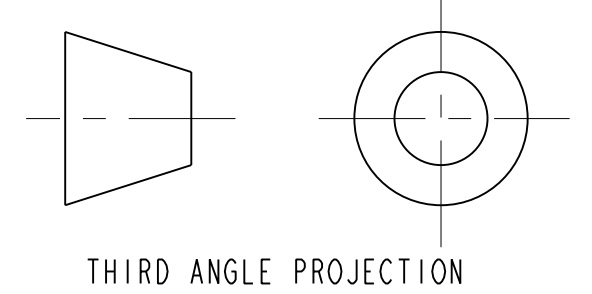


SCALE 3/16

B

B

- NOTES: UNLESS OTHERWISE SPECIFIED.
- DIMENSIONS AND TOLERANCING PER ANSI Y14.5M-1982 UNITS ARE IN INCHES UNLESS OTHERWISE SPECIFIED.
 - USE OF SULFUR OR SILICONE BEARING OILS, LUBRICANTS, OR COOLANTS ARE STRICTLY PROHIBITED.
 - USE OF RESIN OR RUBBER BONDED ABRASIVES UNDER POWER IS STRICTLY PROHIBITED. USE VITREOUS BONDED ABRASIVES ONLY.
 - CLEAN AFTER MACHINING PER VENDOR SPECIFICATION; SUBJECT TO LBNL APPROVAL.
 - VENDOR SUGGESTED CHANGES TO WELD PREPS; SUBJECT TO LBNL APPROVAL.
 - PROTECT FINISHED PART BY BAGGING OR SIMILAR METHOD TO PROTECT AND MAINTAIN CLEANLINESS DURING SHIPMENT AND STORAGE.
 - VENDOR SUGGESTED CHANGES TO TOLERANCES TO FACILITATE ASSEMBLY; SUBJECT TO LBNL APPROVAL.
 - DIMENSIONS SHOWN IN THE INSPECTION OVAL ARE REFERENCED IN THE FABRICATION TRAVELLER.
 - ALL COMPONENTS TO BE INSULATED PER MLI SPECIFICATION PROVIDED BY THE VENDOR. SUBJECT TO LBNL APPROVAL.



THIRD ANGLE PROJECTION

ITEM	PART NO.	QTY	DESCRIPTION	MATERIAL
37	251841	1	INSERT, TRANSDUCER FLANGE	SS 304L
36	-	1	4.5" CF NON-ROTATABLE, WELD FLANGE FOR 2.5 DIA PIPE	SS 304L
35	-	32	SCH, M8X1, 30 LG, VENTED, SILVER PLATED	SS 18-8
34	-	8	SCH, 1/2 UNC X 1.0 LG, SILVER PLATE	SS 18-8
33	-	32	LOCK WASHER, M8	SS
32	-	10	CHIMNEY THERMAL ANCHOR, MIN A/L: .09"	COPPER, OFHC, C101
31	251074	2	THERMAL SHIELD STUB	COPPER, OFHC, C101
30	251446	2	BASE RING	COPPER, OFHC, C101
29	251593	1	THERMAL SHIELD ASSY, DFBXF	CD4101
28	-	1	DIAGNOSTIC PIPE, 1.0 PIPE	304L SS
27	-	1	CONFLAT, NON-ROTATABLE, 2"	304L SS
26	-	1	VENT SLEEVE 3"PIPE	304L SS
25	25M865	10	WELD FLANGE, CHIMNEY TUBE	304L SS
24	25M864	1	VENT SLEEVE CAP	304L SS
23	25M855	2	DH SLEEVE CAP	304L SS
22	251842	1	TUBE, 4.25 X 3" LONG	304L SS
21	-	2	2.0" TUBE X 6.78 LG	304L SS
20	25M819	16	PLATE, 2 HOLE	304L SS
19	-	1	TUBE, 2.5 OD X .049 WALL	300 SERIES SS
18	25M817	1	BELLOWS, 2.5 BORE, HYSPAN FILE H-1339-2	300 SERIES SS
17	25M816	1	BELLOWS, 1.0 BORE	300 SERIES SS
16	25M816	1	BELLOWS, 1.0 BORE, HYSPAN FILE H-1339-1	300 SERIES SS
15	251849	1	CONFLAT, 6" NON-ROTATABLE FLANGE	300 SERIES SS
14	251334	4	M12 X 1.75 ROD, 9.04 LG	18-8 SS
13	251333	8	M12 X 1.75 ROD, 9.22 LG	18-8 SS
12	251332	4	M12 X 1.75 ROD, 10.75 LG	18-8 SS
11	251331	8	M12 X 1.75 ROD, 10.54 LG	18-8 SS
10	25M851	2	SHORT VERTICAL SUPPORT ASSEMBLY	-
9	25M850	2	LONG VERTICAL STRUT ROD ASSEMBLY	-
8	251637	1	DH VENT PIPE	-
7	251153	1	TOP PLATE WELDMENT IPS RIGHT	-
6	251161	1	CHECK VALVE ASSY	-
5	251574	1	LIQUID HELIUM TANK - B PORT RIGHT	-
4	251327	6	HTS CHIMNEY ASSY TOP	-
3	251177	1	4 1/2" PUMPING PORT, CRYOGENIC DIAGNOSTIC ASSY.	-
2	251175	4	VAPOR COOLED LEAD CHIMNEY ASSY	-
1	251174	6	HTS CHIMNEY ASSY LOWER	-

ERNEST ORLANDO LAWRENCE
BERKELEY NATIONAL LABORATORY
UNIVERSITY OF CALIFORNIA - BERKELEY

LHC IR FEEDBOX
MAJOR ASSEMBLY
TOP PLATE WELDMENT SUBASSY IPS RIGHT

REVISED: 04-APR-02
DWG. NO. 251556
SCALE: 1/4
SHEET 1 OF 4

DATE: 29-Sep-02
DATE: 04-APR-02
DATE: 04-APR-02

DESIGN ACCT. NO. 24C395
CATEGORY CODE LH2001

251556 A

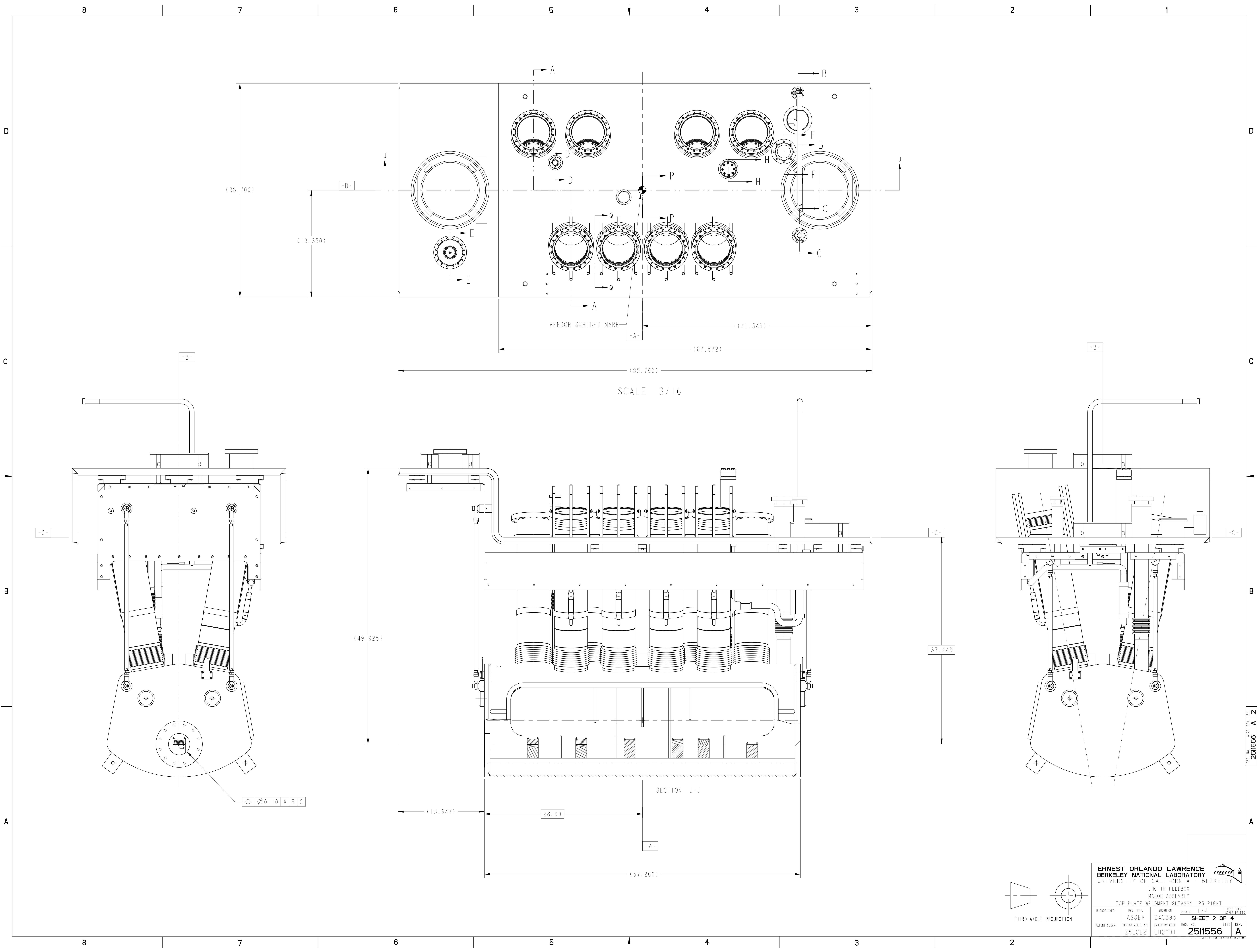
A

A

REV	DWG	CHK	ZONE	DATE	INITIALS	DESCRIPTION
A	JDR	DPQ		10/7/02		INITIAL RELEASE

ITEM	PART NO.	QTY	DESCRIPTION	MATERIAL
37	251841	1	INSERT, TRANSDUCER FLANGE	SS 304L

ITEM	PART NO.	QTY	DESCRIPTION	MATERIAL
36	-	1	4.5" CF NON-ROTATABLE, WELD FLANGE FOR 2.5 DIA PIPE	SS 304L



D

C

B

A

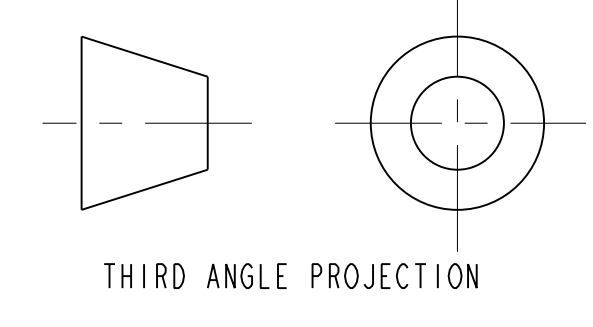
D

C

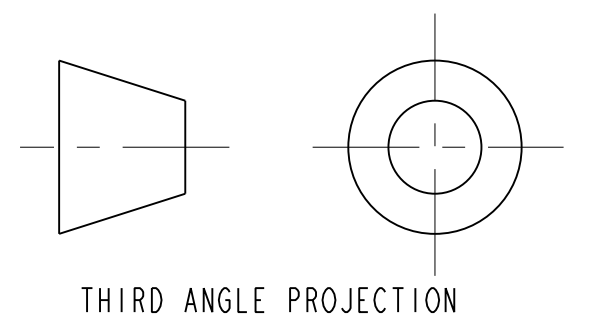
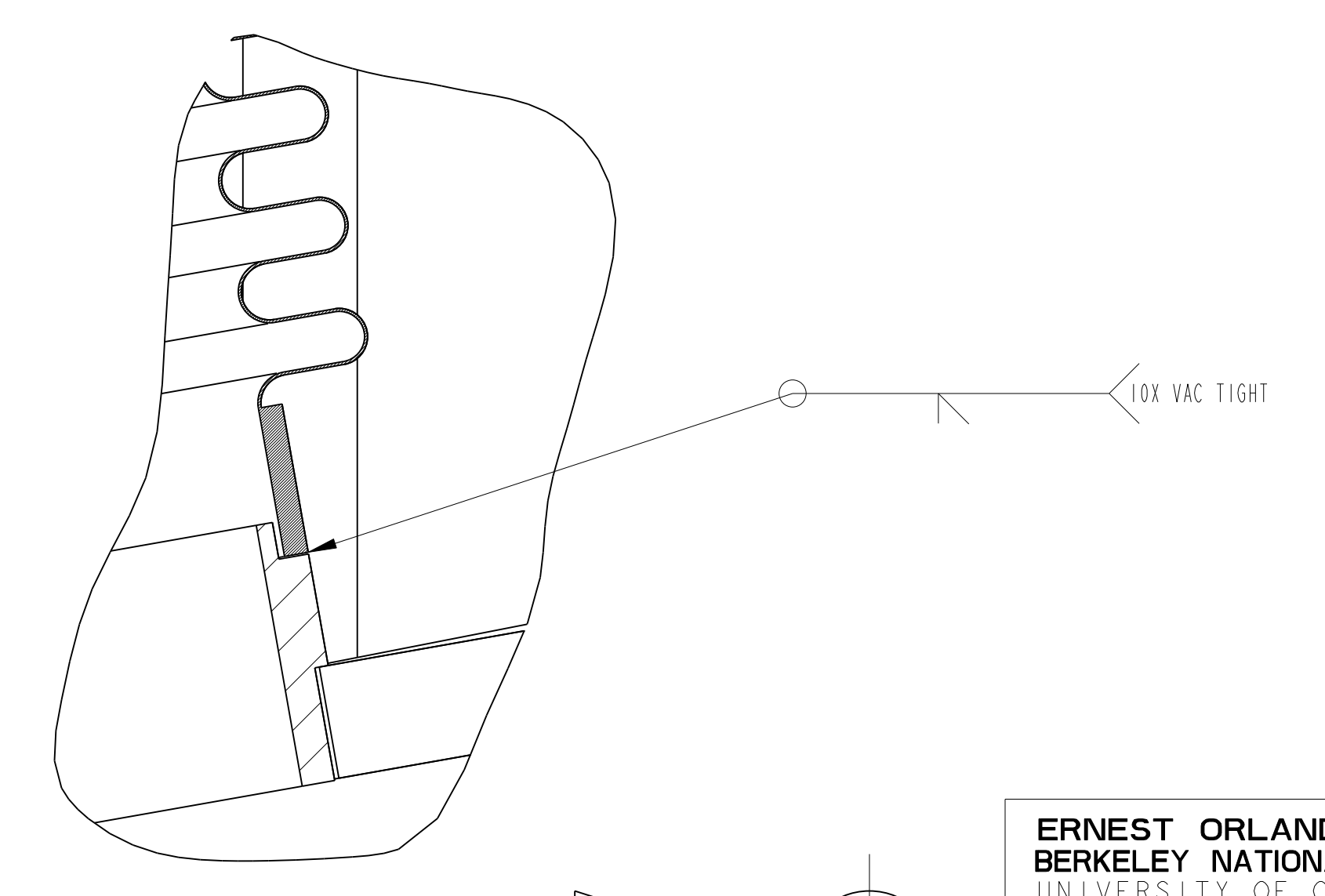
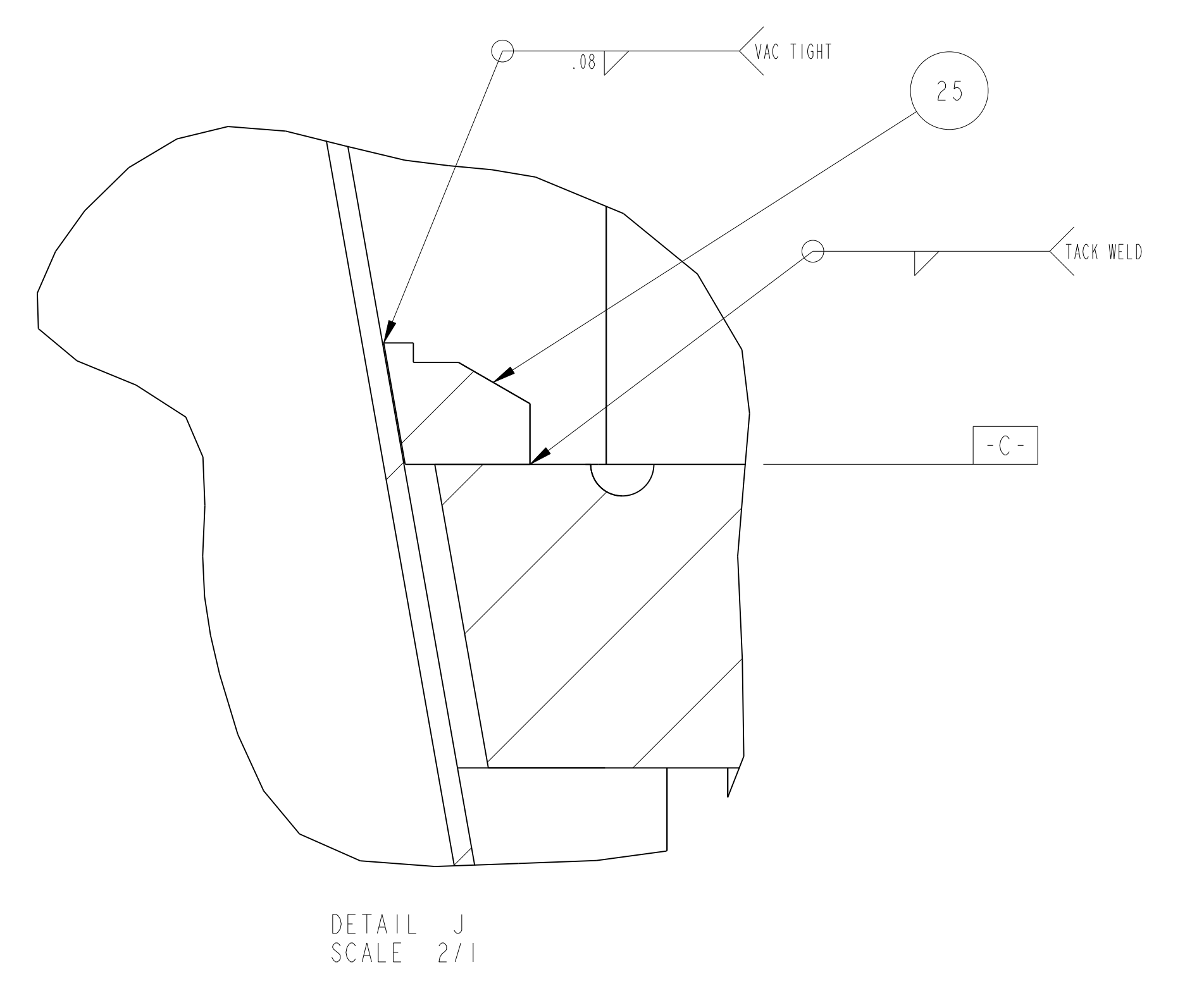
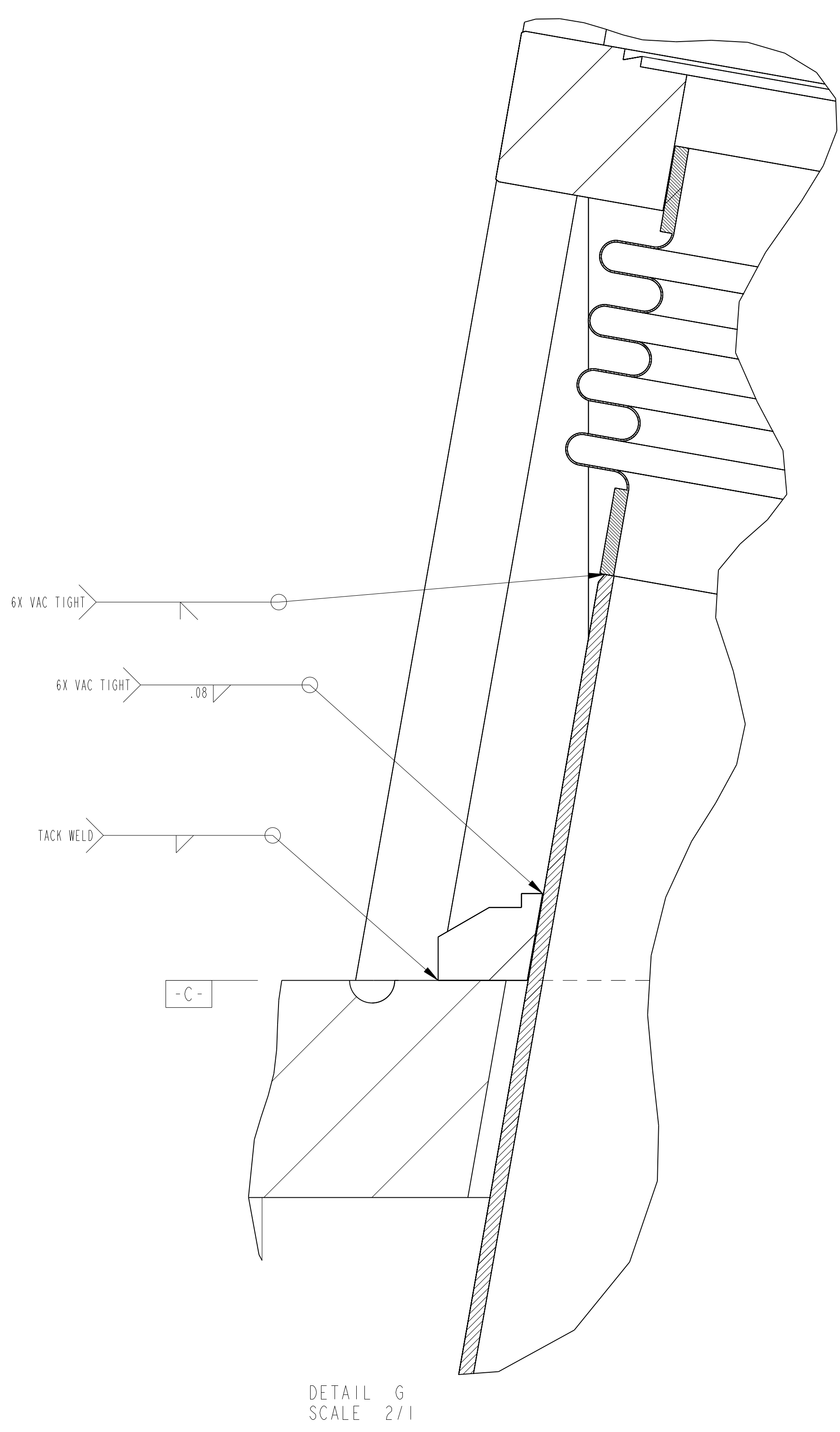
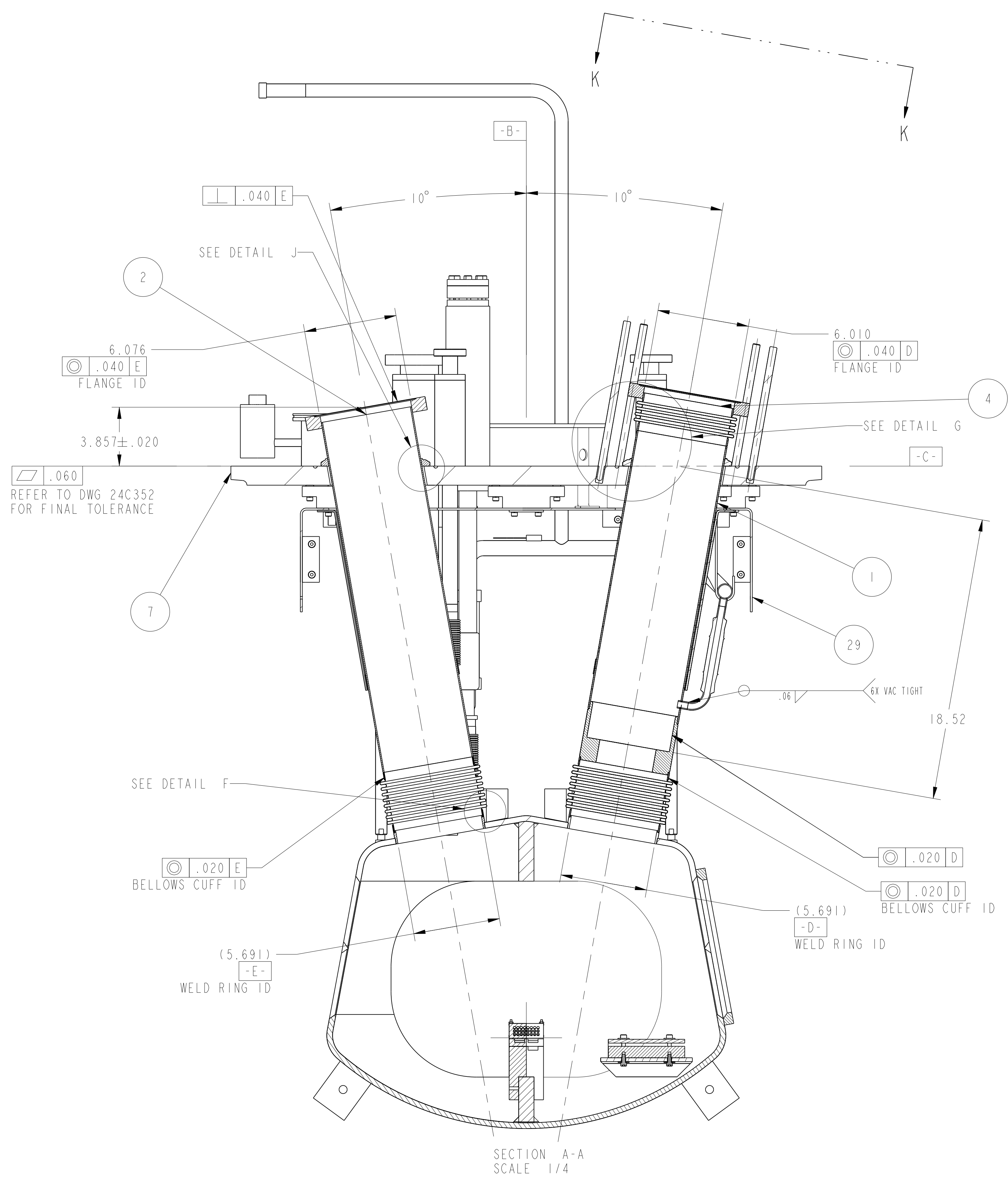
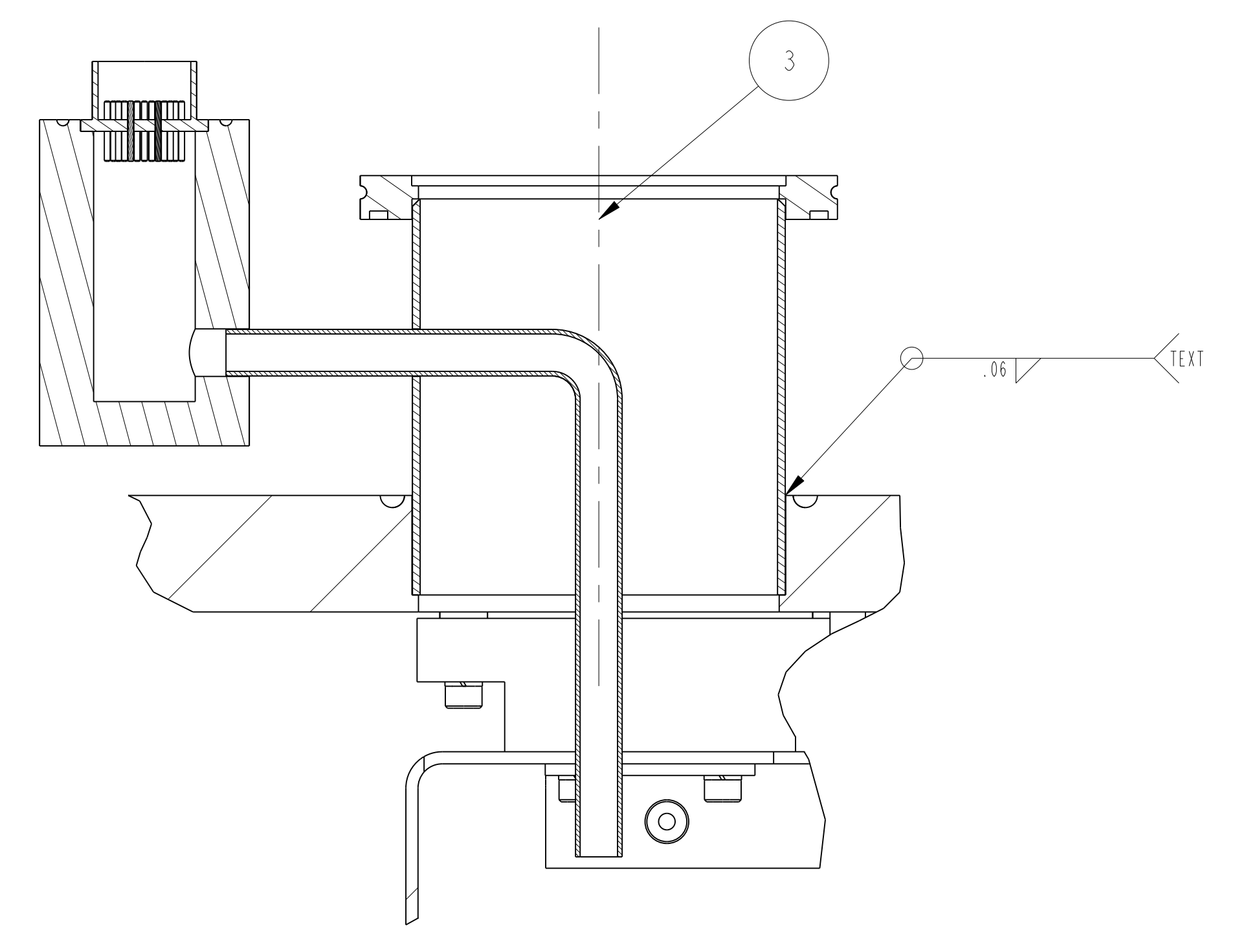
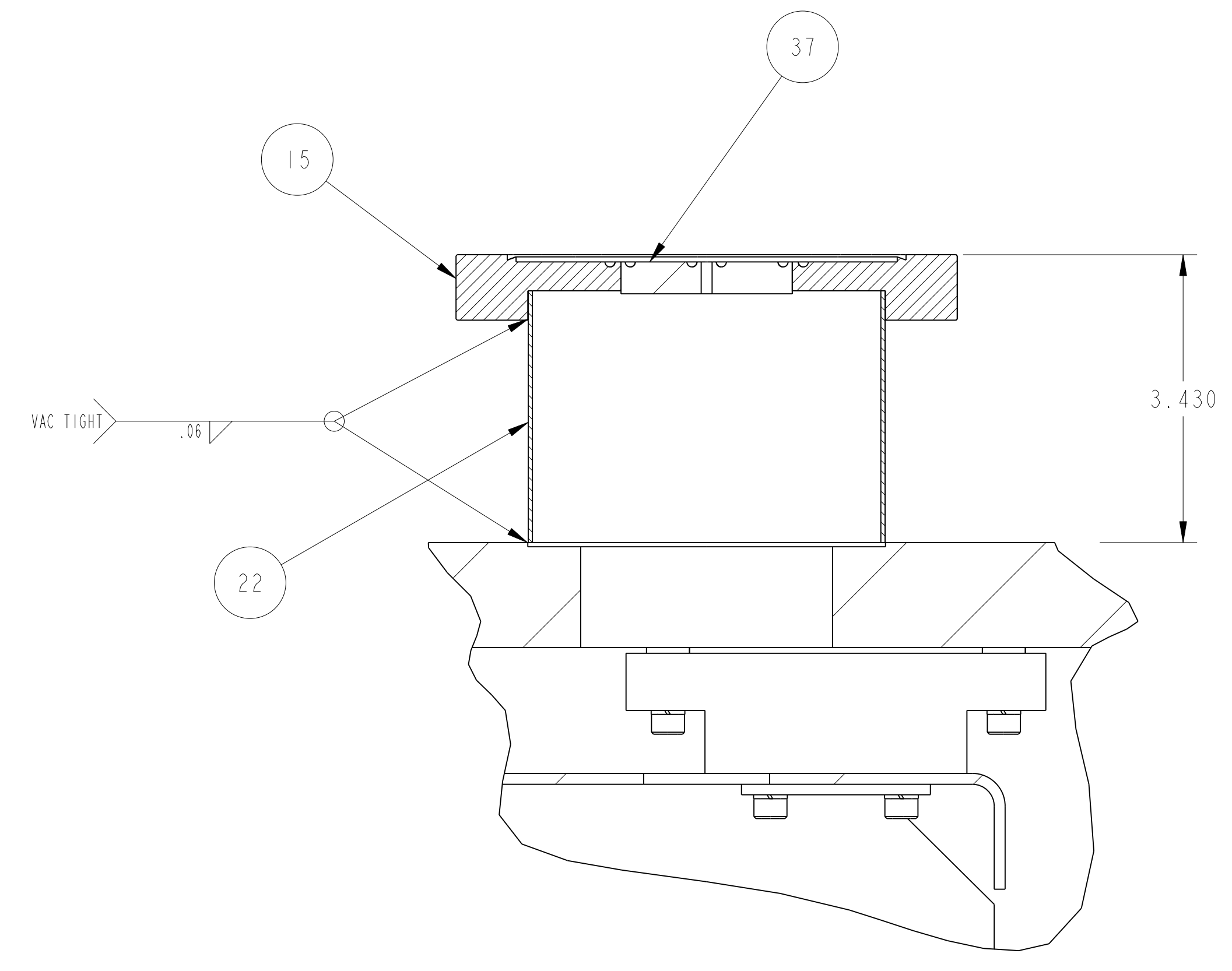
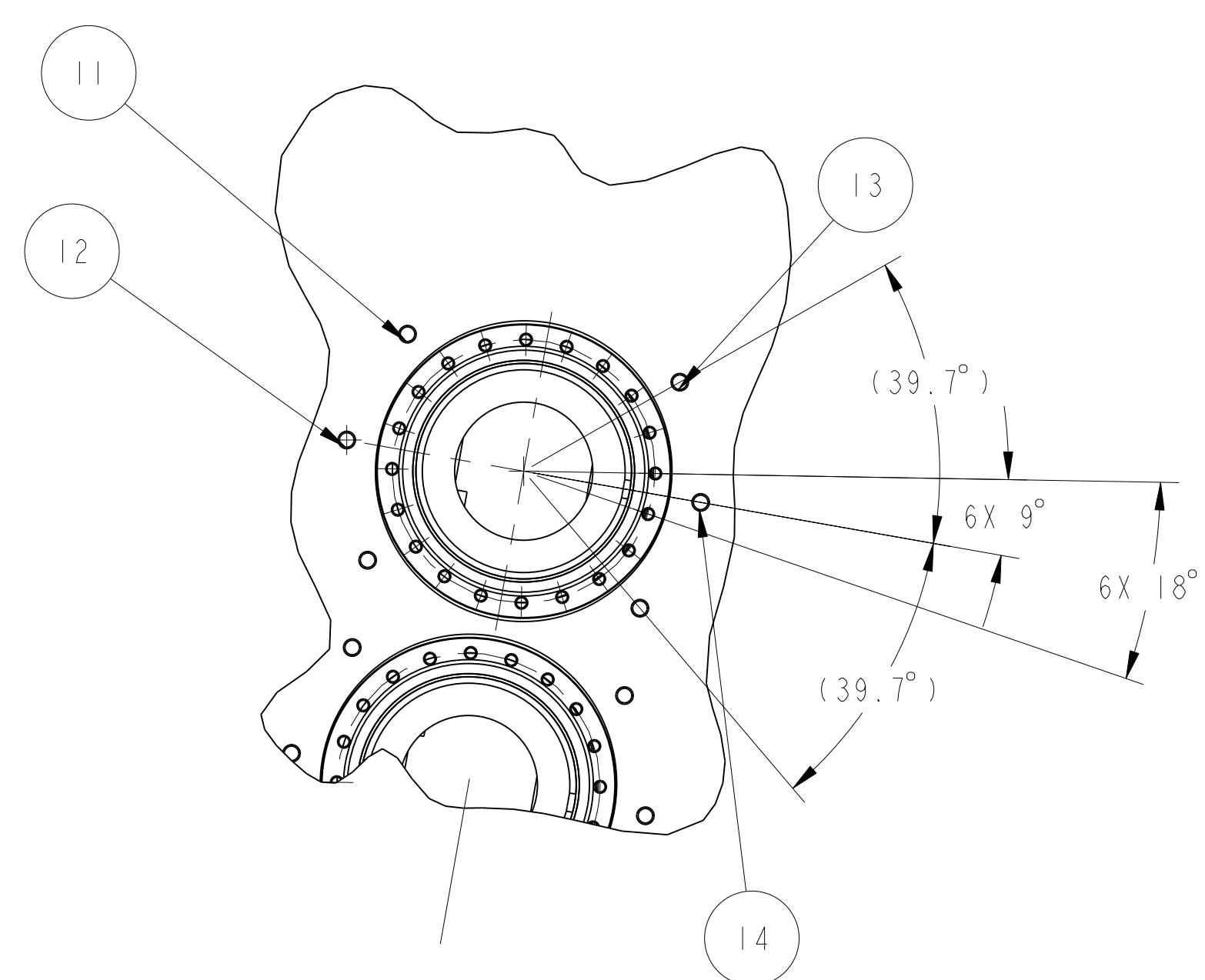
B

A

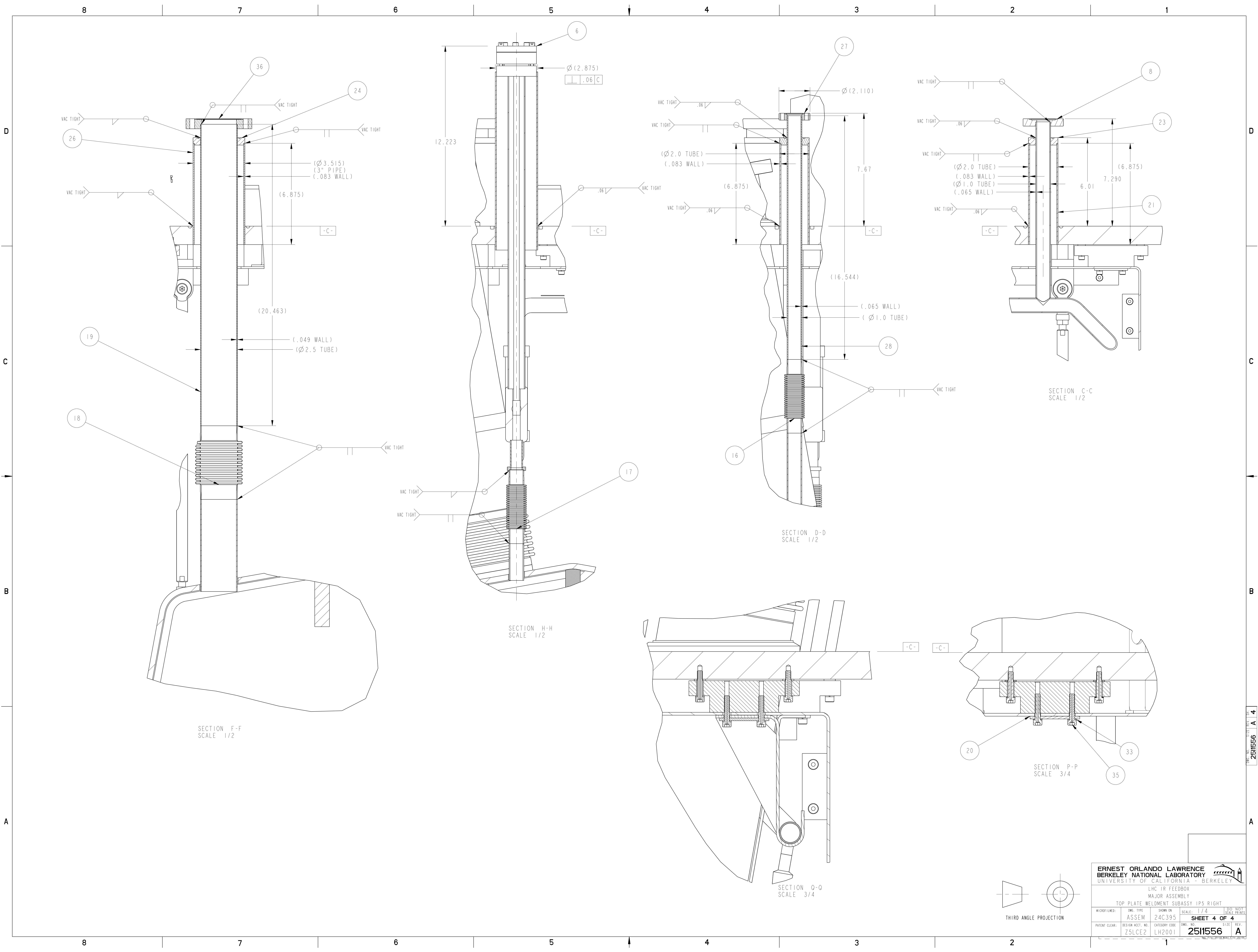
ERNEST ORLANDO LAWRENCE BERKELEY NATIONAL LABORATORY					
LHC IR FEEDBOX MAJOR ASSEMBLY TOP PLATE WELDMENT SUBASSY IPS RIGHT					
MICROFILMED:	DWG. TYPE:	SHOWN ON:	SCALE:	DO NOT SCALE PRINTS	
	ASSEM	24C395	1/4		
PATENT CLEAR:	DESIGN ACCT. NO.	CATEGORY CODE:	DWG. NO.	SIZE	REV.
	Z5LCE2	LH2001	2511556	A	



DWG. NO. 2511556
 SHEET 2 OF 4
 A 2



ERNEST ORLANDO LAWRENCE BERKELEY NATIONAL LABORATORY				UNIVERSITY OF CALIFORNIA BERKELEY	
LHC IR FEEDBOX MAJOR ASSEMBLY TOP PLATE WELDMENT SUBASSY IPS RIGHT					
MICROFILMED:	DWG. TYPE:	SHOWN ON:	SCALE:	DO NOT SCALE PRINTS	
	ASSEM	24C395	1/4		
PATENT CLEAR:	DESIGN ACCT. NO.	CATEGORY CODE:	DWG. NO.	SIZE	REV.
	Z5LCE2	LH2001	2511556	A	



SECTION F-F
SCALE 1/2

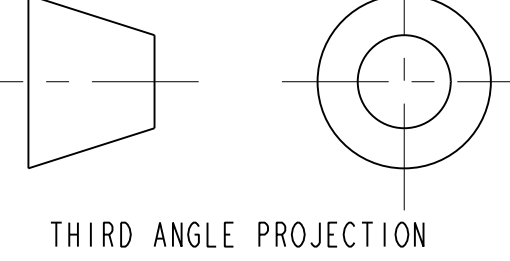
SECTION H-H
SCALE 1/2

SECTION D-D
SCALE 1/2

SECTION C-C
SCALE 1/2

SECTION P-P
SCALE 3/4

SECTION O-O
SCALE 3/4



ERNEST ORLANDO LAWRENCE BERKELEY NATIONAL LABORATORY <small>UNIVERSITY OF CALIFORNIA - BERKELEY</small>			
LHC IR FEEDBOX MAJOR ASSEMBLY TOP PLATE WELDMENT SUBASSY IPS RIGHT			
MICROFILMED:	DWG. TYPE:	SHOWN ON:	SCALE:
	ASSEM	24C395	1/4
PATENT CLEAR:	DESIGN ACCT. NO.	CATEGORY CODE:	DWG. NO.
	ZSLCE2	LH2001	2511556
			DO NOT SCALE PRINTS
			SHEET 4 OF 4
			SIZE REV. A

DWG. NO. 2511556
 SHEET 4 OF 4
 A