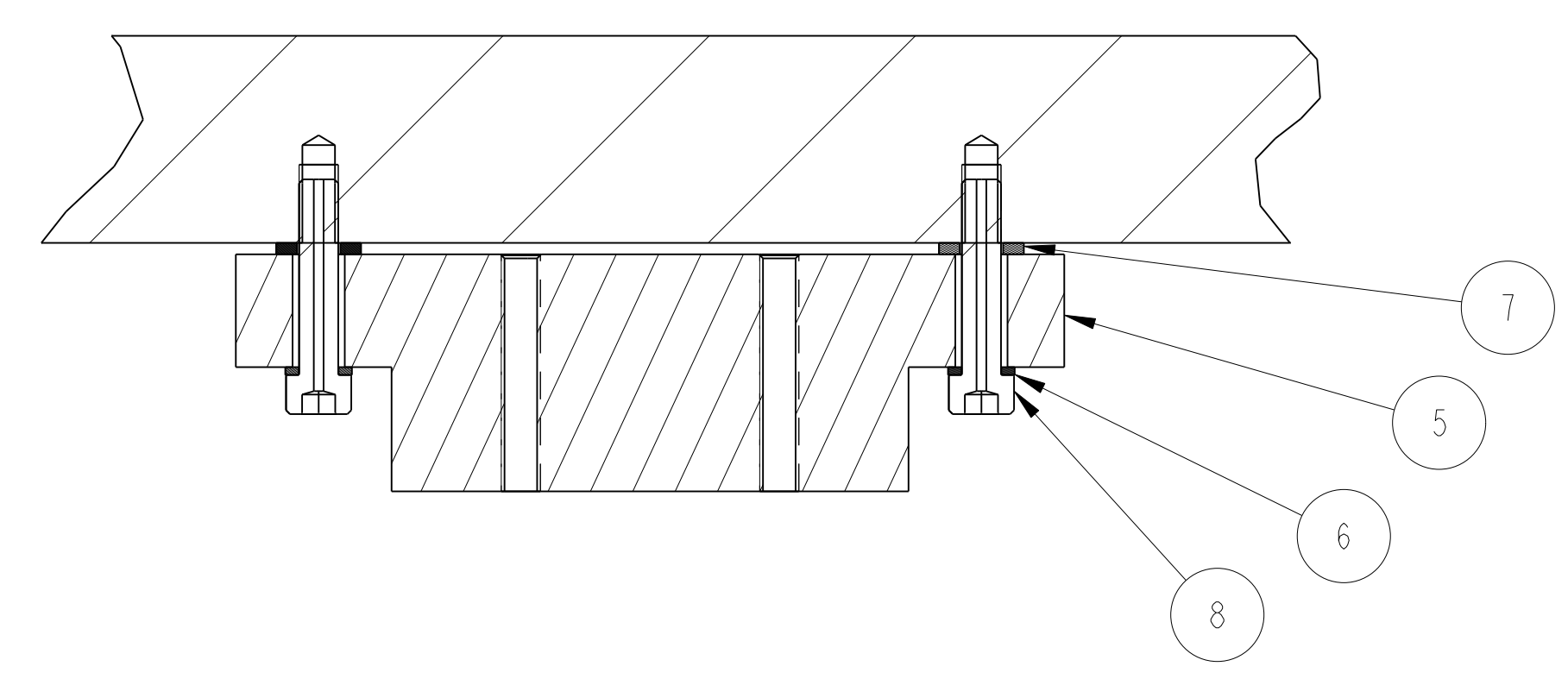
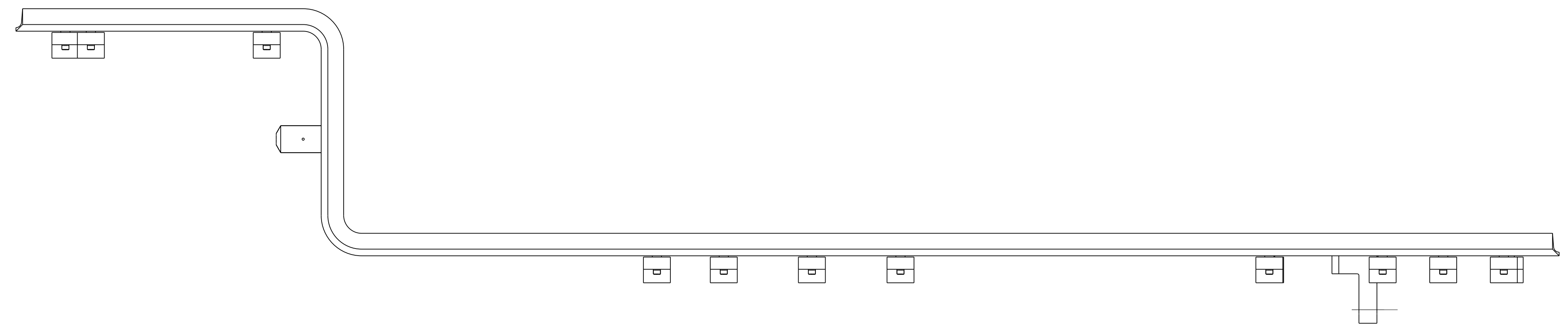
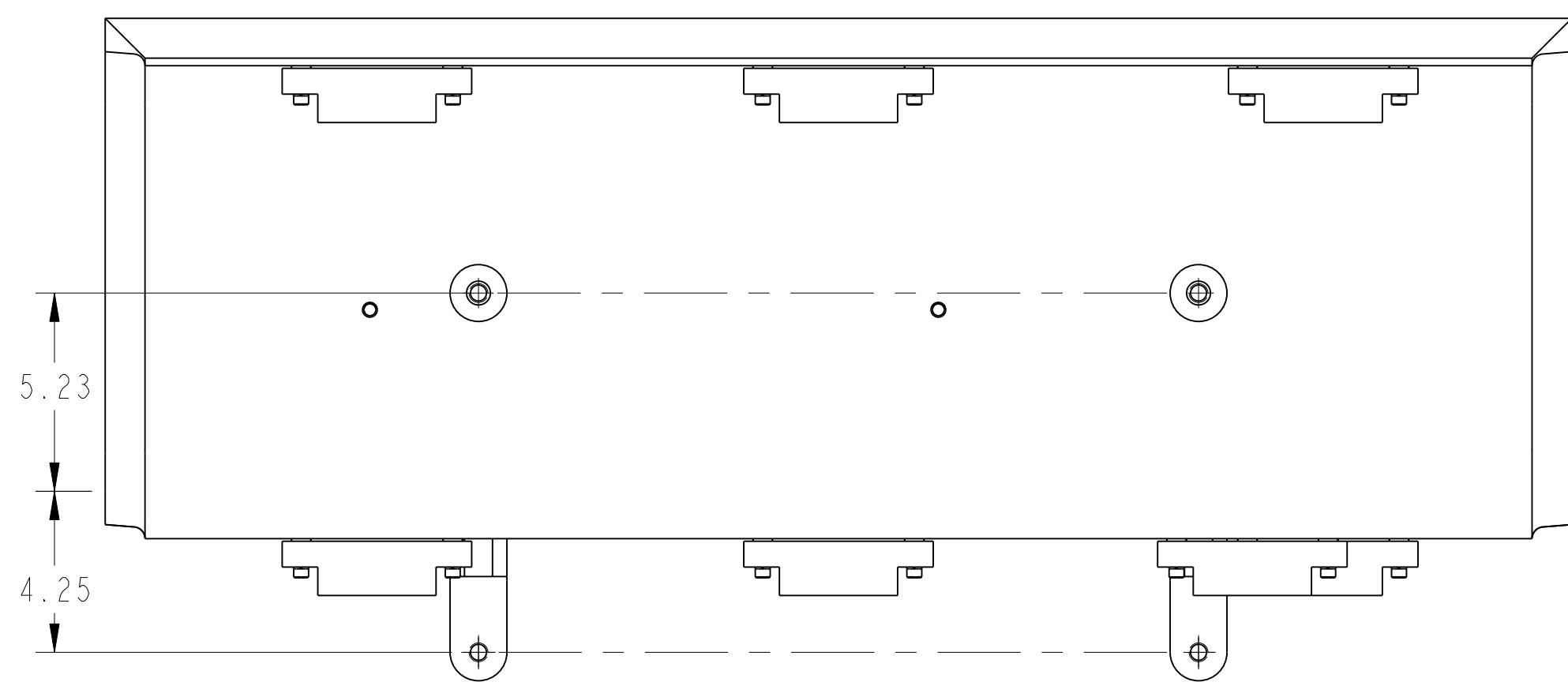


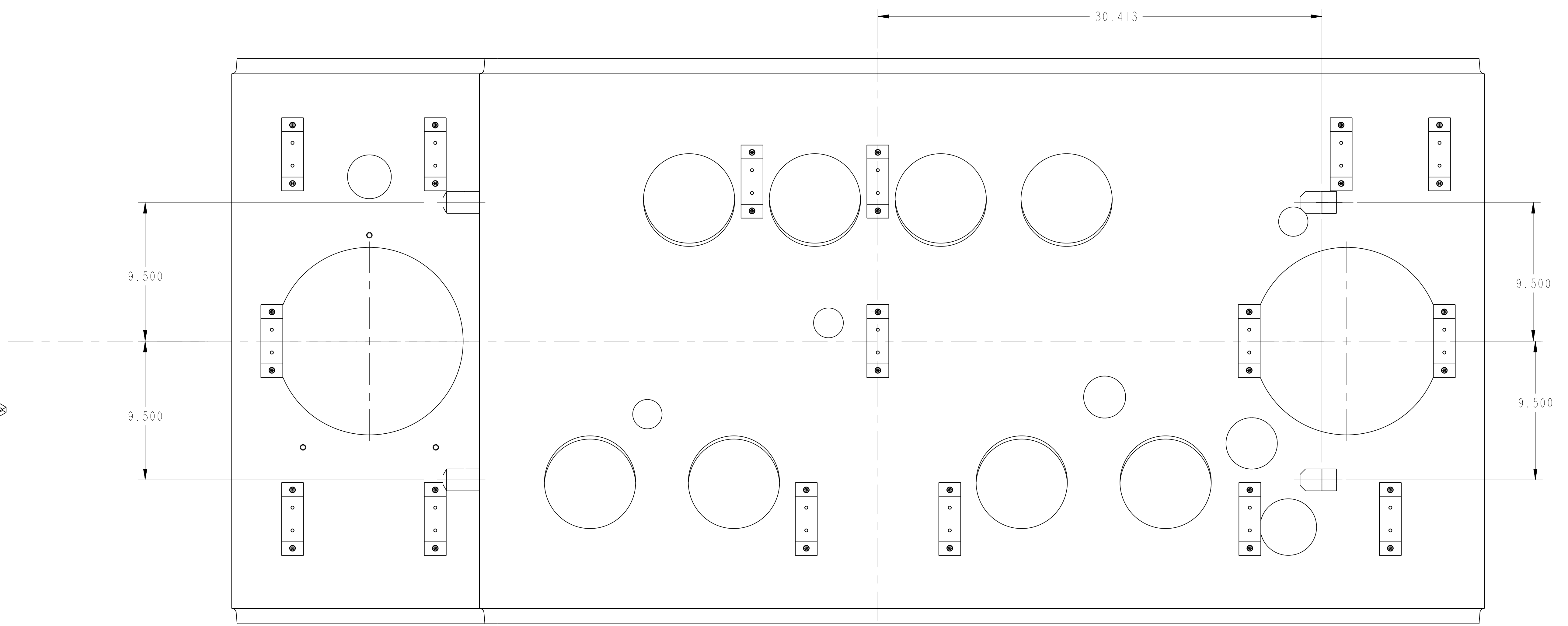
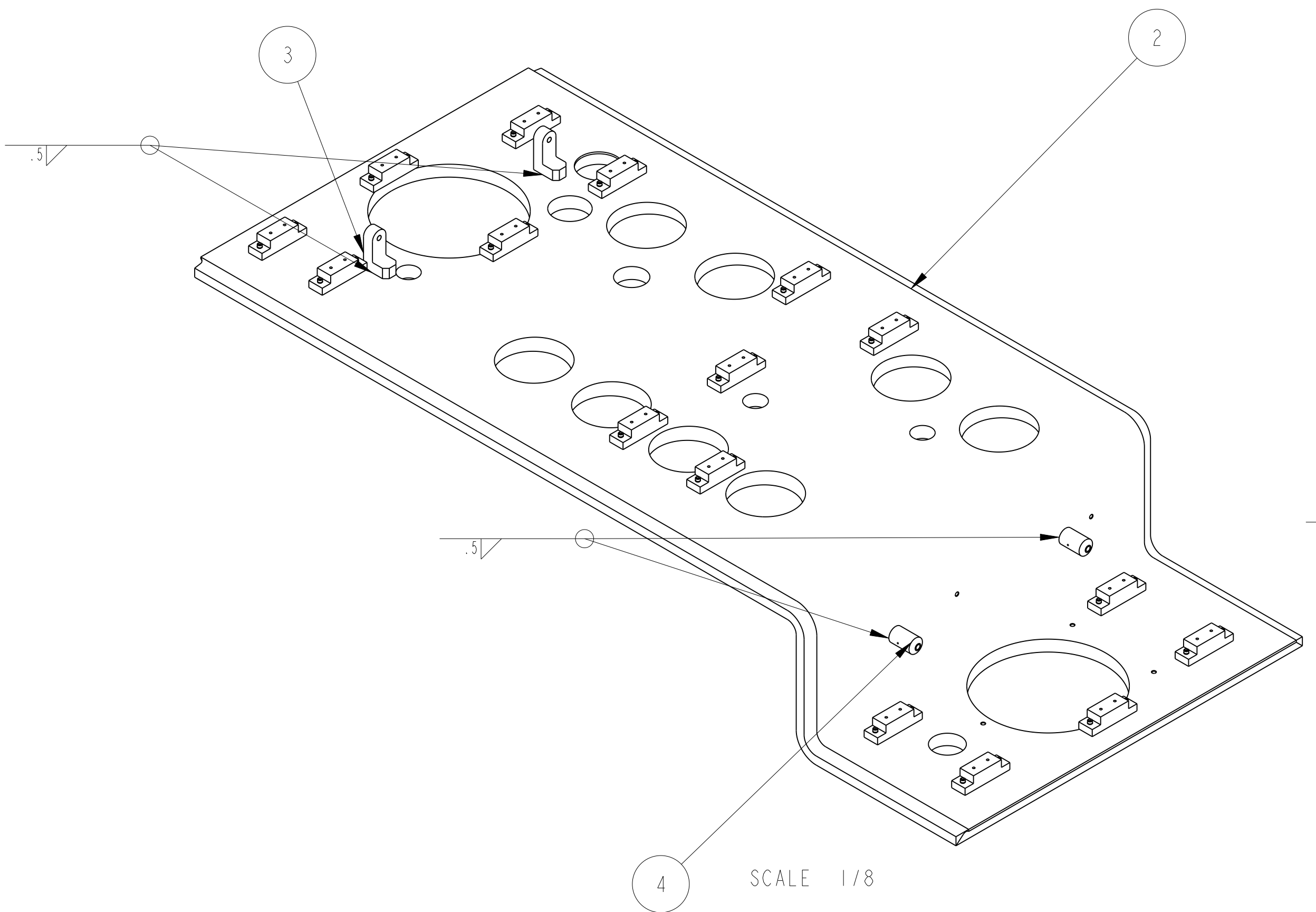
8 7 6 5 4 3 2 1

D



SECTION A-A  
SCALE 1/1

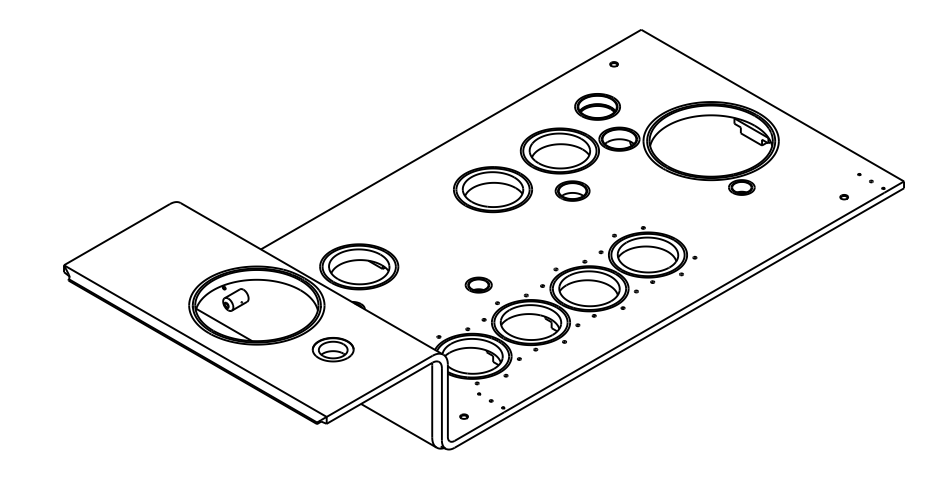
C



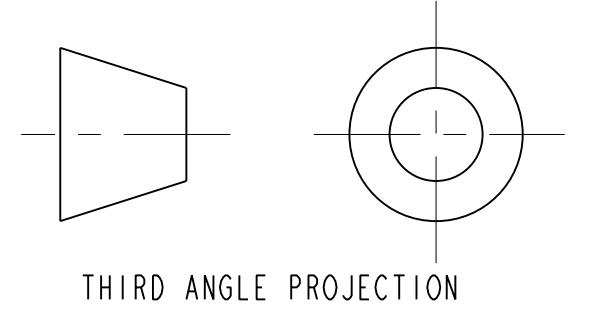
B

B

- NOTES: UNLESS OTHERWISE SPECIFIED,
- DIMENSIONS AND TOLERANCING PER ANSI Y14.5M-1982 UNITS ARE IN INCHES UNLESS OTHERWISE SPECIFIED.
  - USE OF SULFUR OR SILICONE BEARING OILS, LUBRICANTS, OR COOLANTS ARE STRICTLY PROHIBITED
  - USE OF RESIN OR RUBBER BONDED ABRASIVES UNDER POWER IS STRICTLY PROHIBITED. USE VITREOUS BONDED ABRASIVES ONLY.
  - VENDOR WELD PROCEDURE SUBJECT TO LBNL APPROVAL.
  - ESTIMATED WEIGHT = 1,130 LBS



SCALE 1/20



THIRD ANGLE PROJECTION

REV	DATE	BY	CHK	ZONE	DESCRIPTION
A	JDRDPO	10/7/02			INITIAL RELEASE
					CHANGES

ITEM	PART NO.	QTY	RECD	DESCRIPTION	MATERIAL
8	-	32		SCH, MXX1, 30 LG, VENTED, SILVER PLATED	SS 18-8
7	-	32		WASHER, MG	SS
6	-	32		LOCK WASHER, MG	SS
5	251081	16		SPACER	NEMA G10
4	25M861	2		STRUT BOSS	304L SS
3	25M854	2		STRUT BRACKET	304L SS
2	251869	1		TOP PLATE DTBX F, IPS RIGHT	304L SS

ERNEST ORLANDO LAWRENCE  
BERKELEY NATIONAL LABORATORY  
UNIVERSITY OF CALIFORNIA - BERKELEY

LHC IR FEEDBOX  
VACUUM

TOP PLATE WELDMENT IPS RIGHT

SCALE: 1/4

251155

ASSEM

251155

2511536

2511536

1

8 7 6 5 4 3 2 1

A

A

2511536 A 1