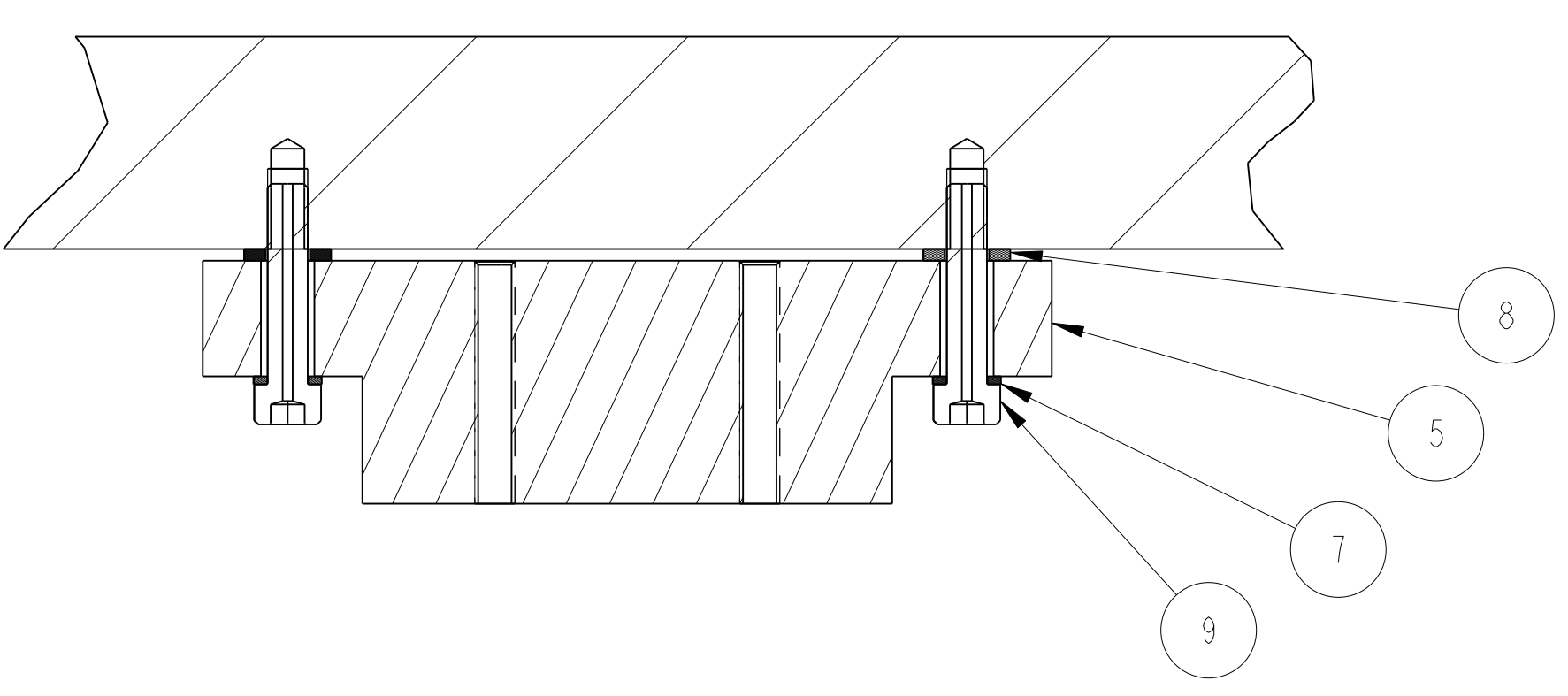
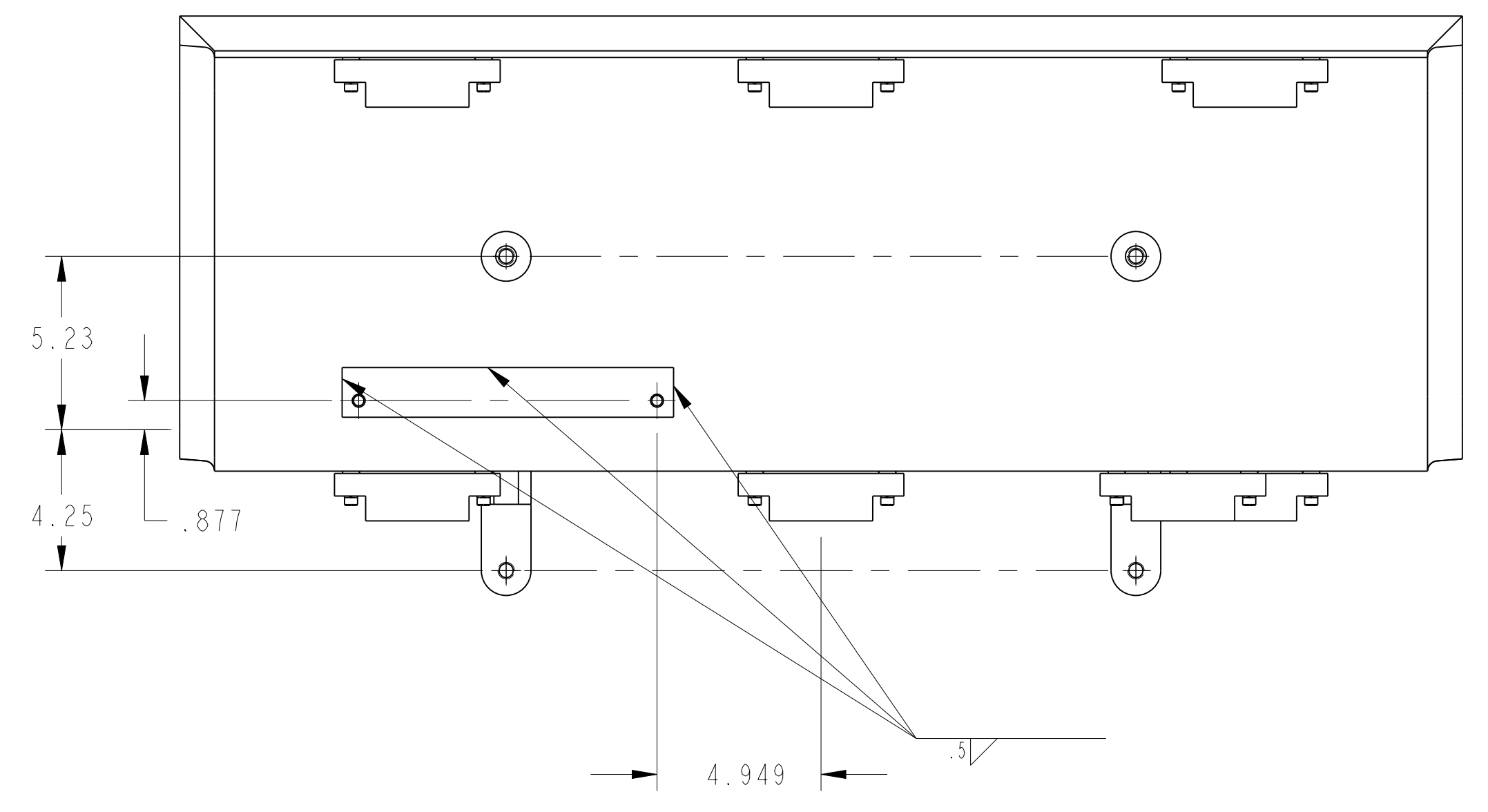
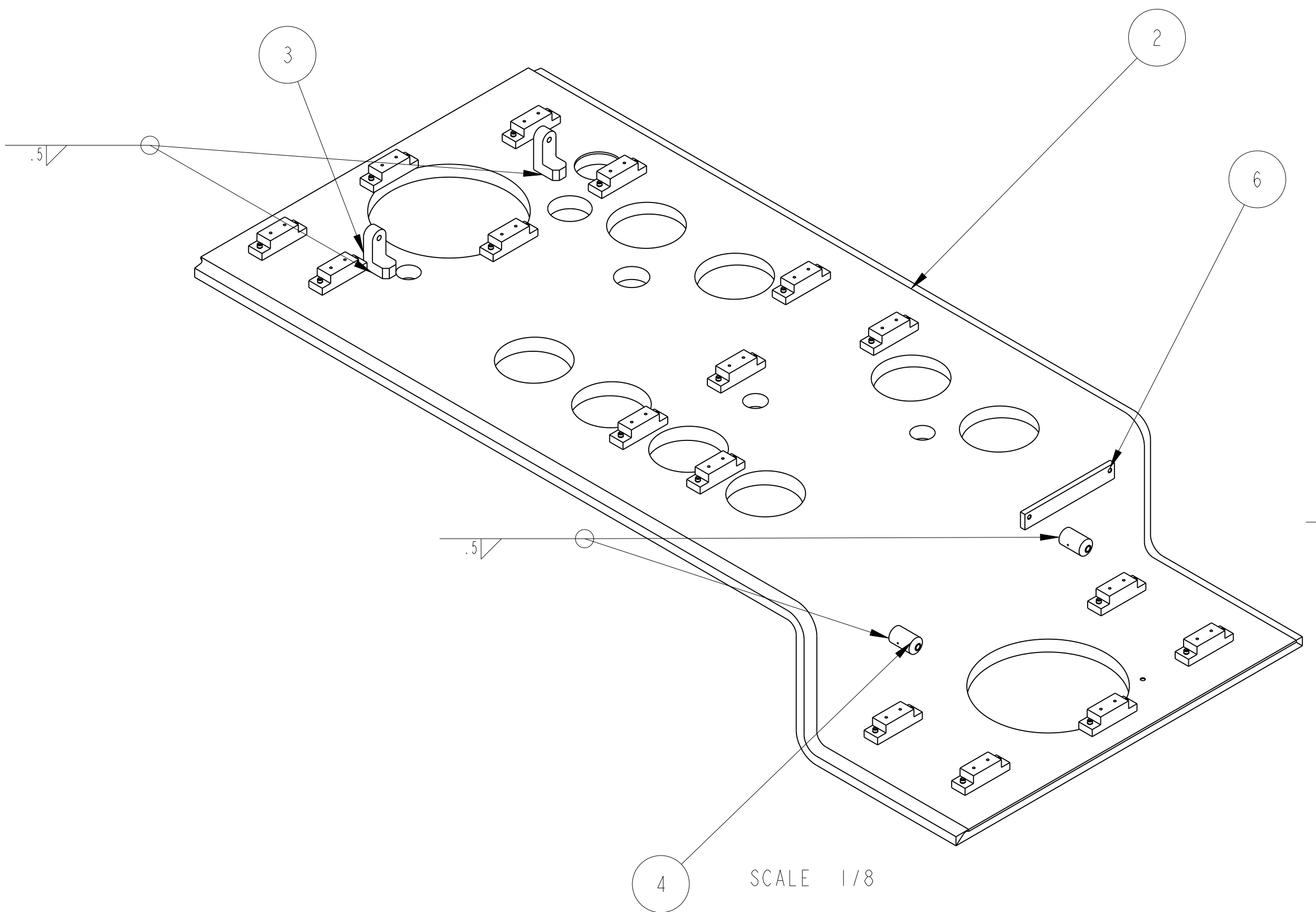


D

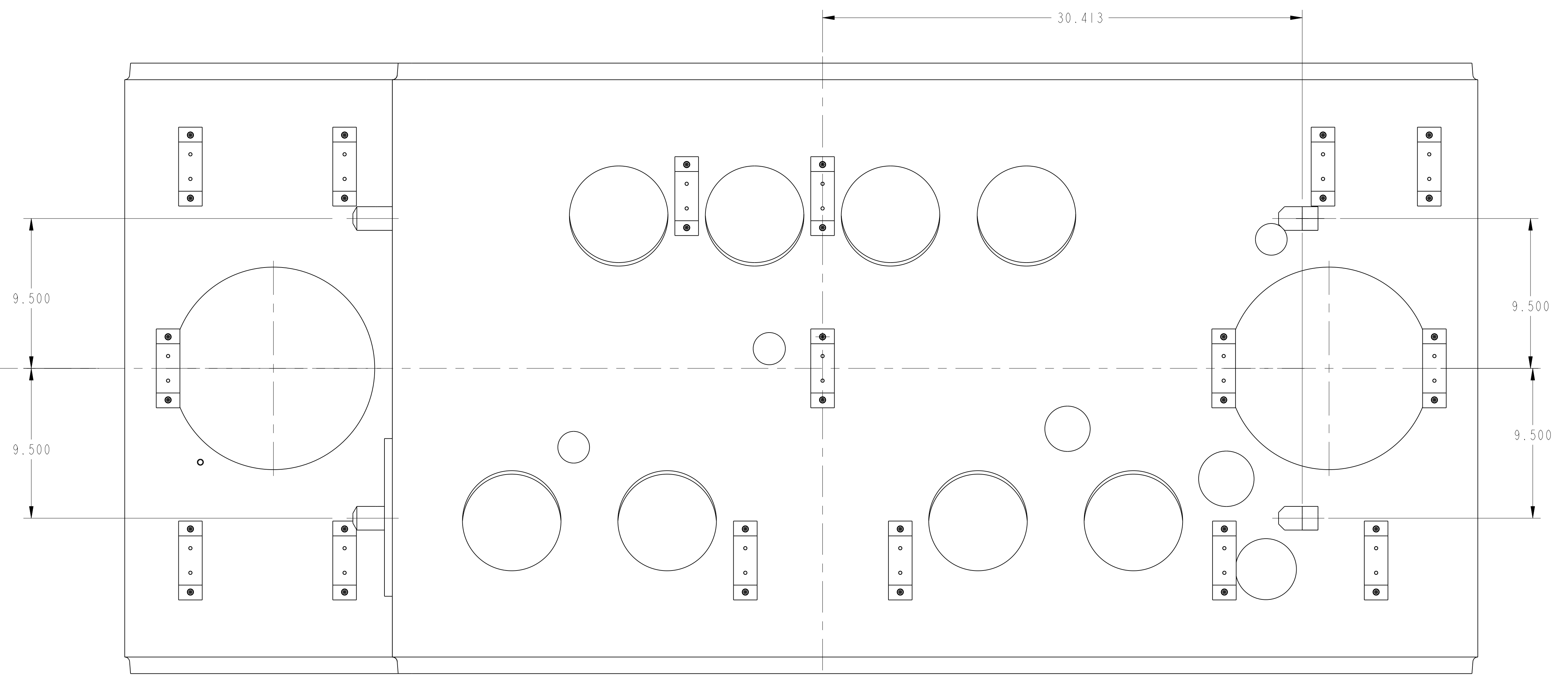


SECTION A-A
SCALE 1/1

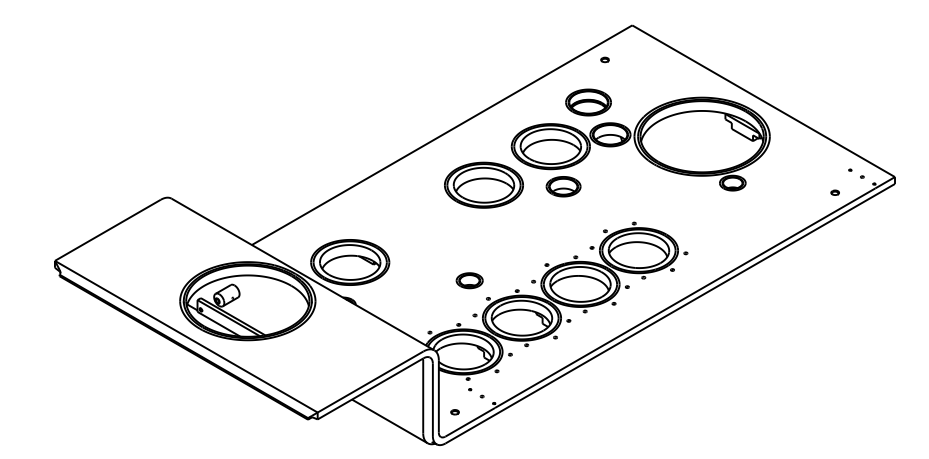
C



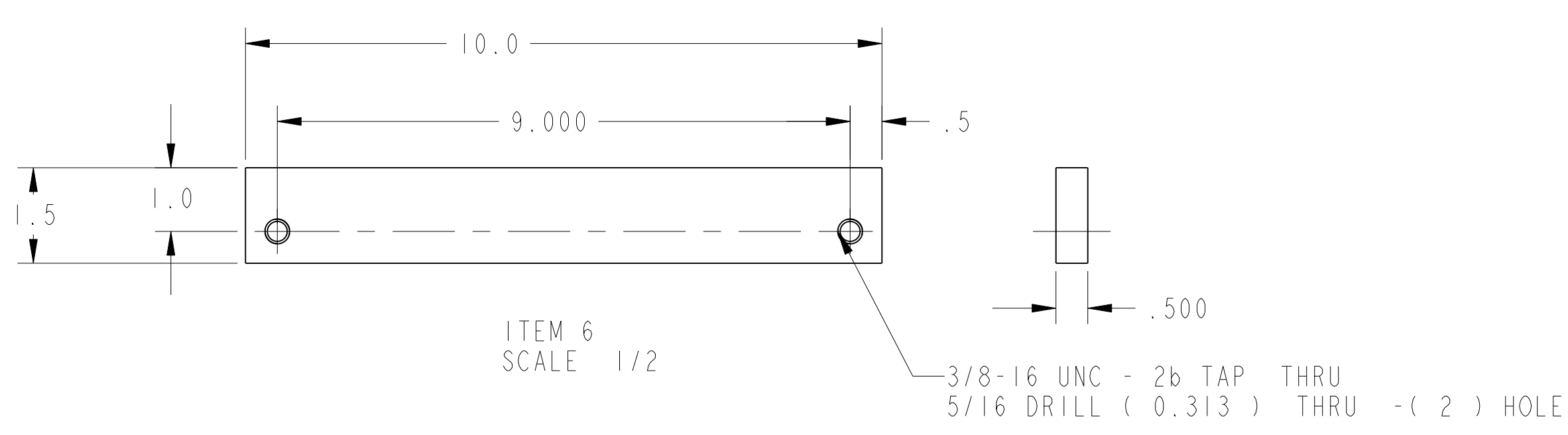
SCALE 1/8



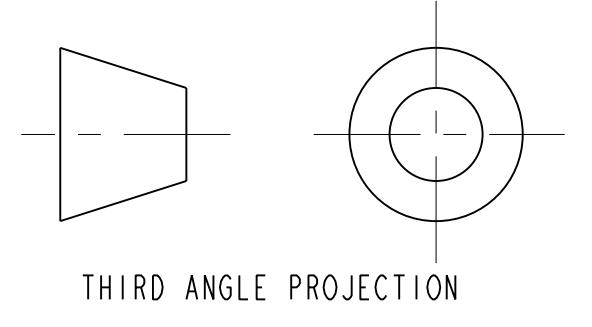
- NOTES: UNLESS OTHERWISE SPECIFIED,
- DIMENSIONS AND TOLERANCING PER ANSI Y14.5M-1982 UNITS ARE IN INCHES UNLESS OTHERWISE SPECIFIED.
 - USE OF SULFUR OR SILICONE BEARING OILS, LUBRICANTS, OR COOLANTS ARE STRICTLY PROHIBITED
 - USE OF RESIN OR RUBBER BONDED ABRASIVES UNDER POWER IS STRICTLY PROHIBITED. USE VITREOUS BONDED ABRASIVES ONLY.
 - VENDOR WELD PROCEDURE SUBJECT TO LBNL APPROVAL.
 - ESTIMATED WEIGHT = 1,130 LBS



SCALE 1/20



ITEM 6
SCALE 1/2



THIRD ANGLE PROJECTION

REV	DATE	BY	CHK	ZONE	DATE	INITIAL RELEASE
A	JDRDPO	10/7/02				INITIAL RELEASE
						CHANGES

UNLESS OTHERWISE SPECIFIED	
COLEANCES	X.X ± 0.1 FRACTION ± 1/64
	X.XX ± 0.03 ANGLES ± 1.00°
	X.XXX ± 0.010 FINISH 125/32
DO NOT SCALE PRINT	
TOLERANCE CLASS 1	
CHAMFER ENDS OF ALL SCREW THREADS 30°	
BREAK EDGES .015 MAX. ON MACHINED WORK	
REMOVE BURRS, WELD SPATTER & LOOSE SCALE	
IN ACCORDANCE WITH ADP 114.5M 1 ENCL 1	

SHOP ORDERS		DATE	NO.	ISSUE
NO.	DATE	NO.	ISSUE	ISSUE
ERNEST ORLANDO LAWRENCE		UNIVERSITY OF CALIFORNIA - BERKELEY		
LHC IR FEEDBOX		VACUUM		
TOP PLATE WELDMENT IPI RIGHT		SCALE: 1/4		
MICROFILMED:	DWG. TYPE:	SHOWN ON:	SCALE:	DO NOT SCALE PRINTS
	ASSEM	251154	1/4	
DATE: 24-Aug-01		SHEET 1 OF 1		
DATE: 04-APR-02		DWG. NO. 2511526		
DATE: 04-APR-02		REV. A		

A