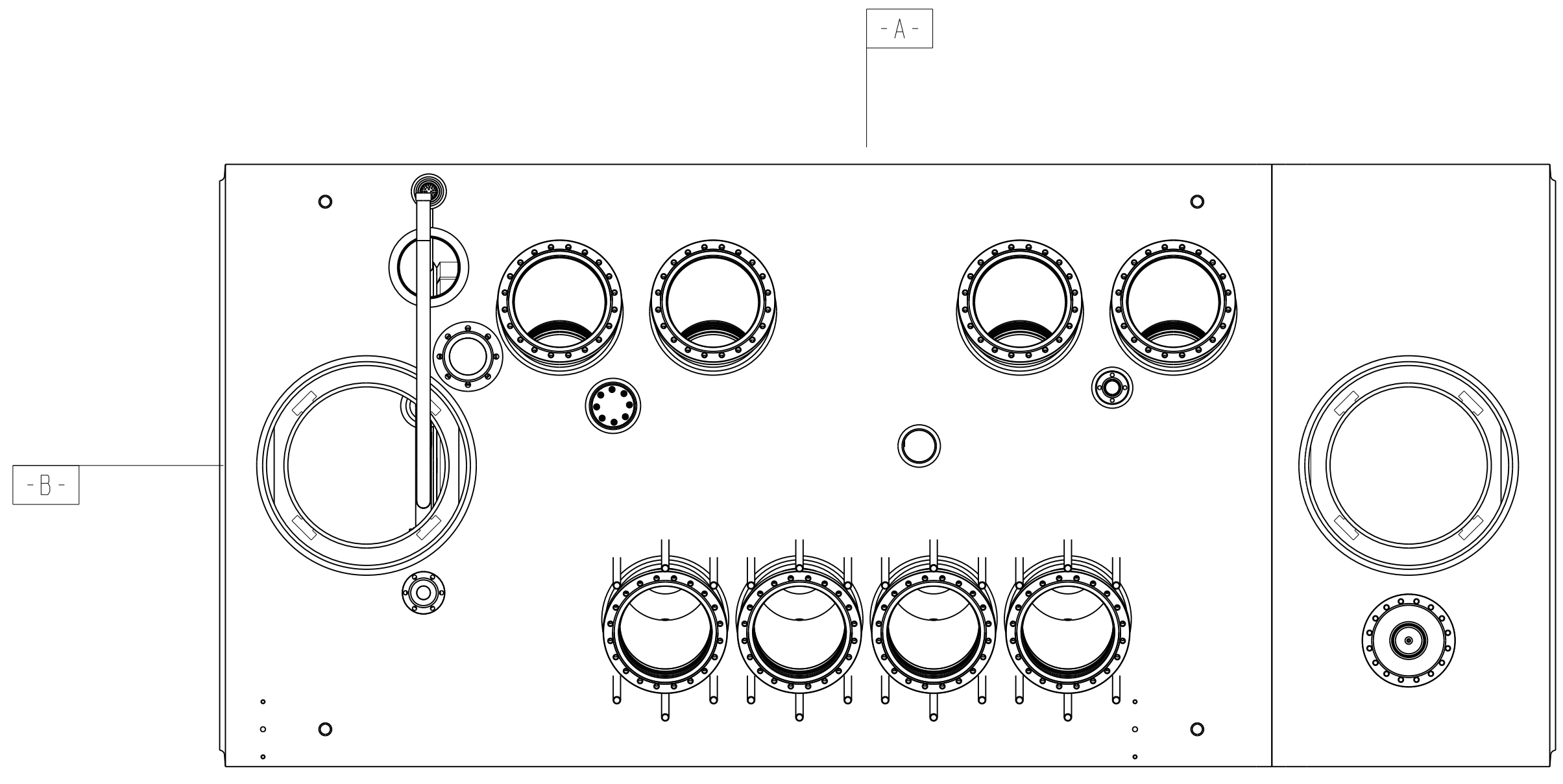


8 7 6 5 4 3 2 1

D

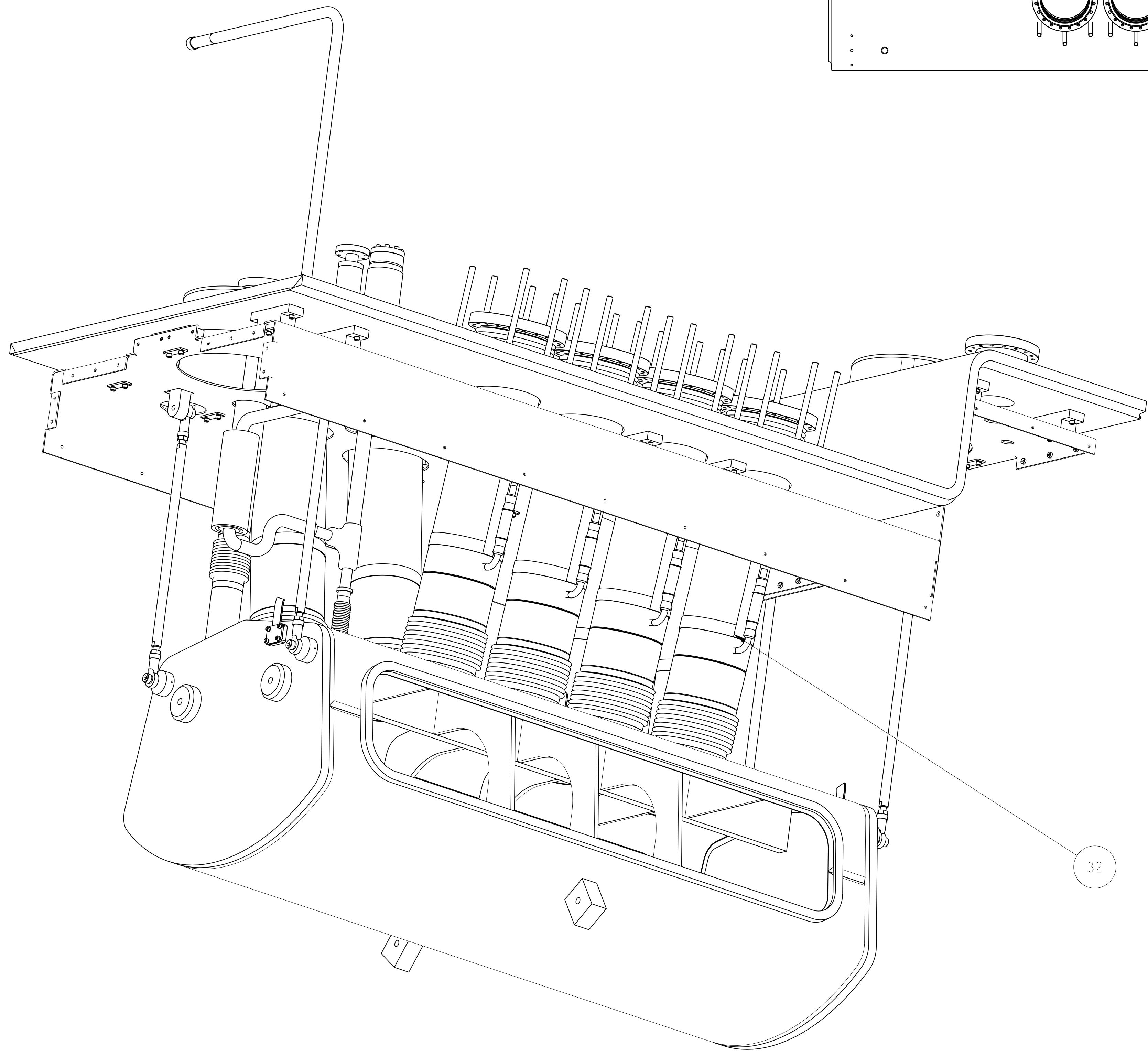
D



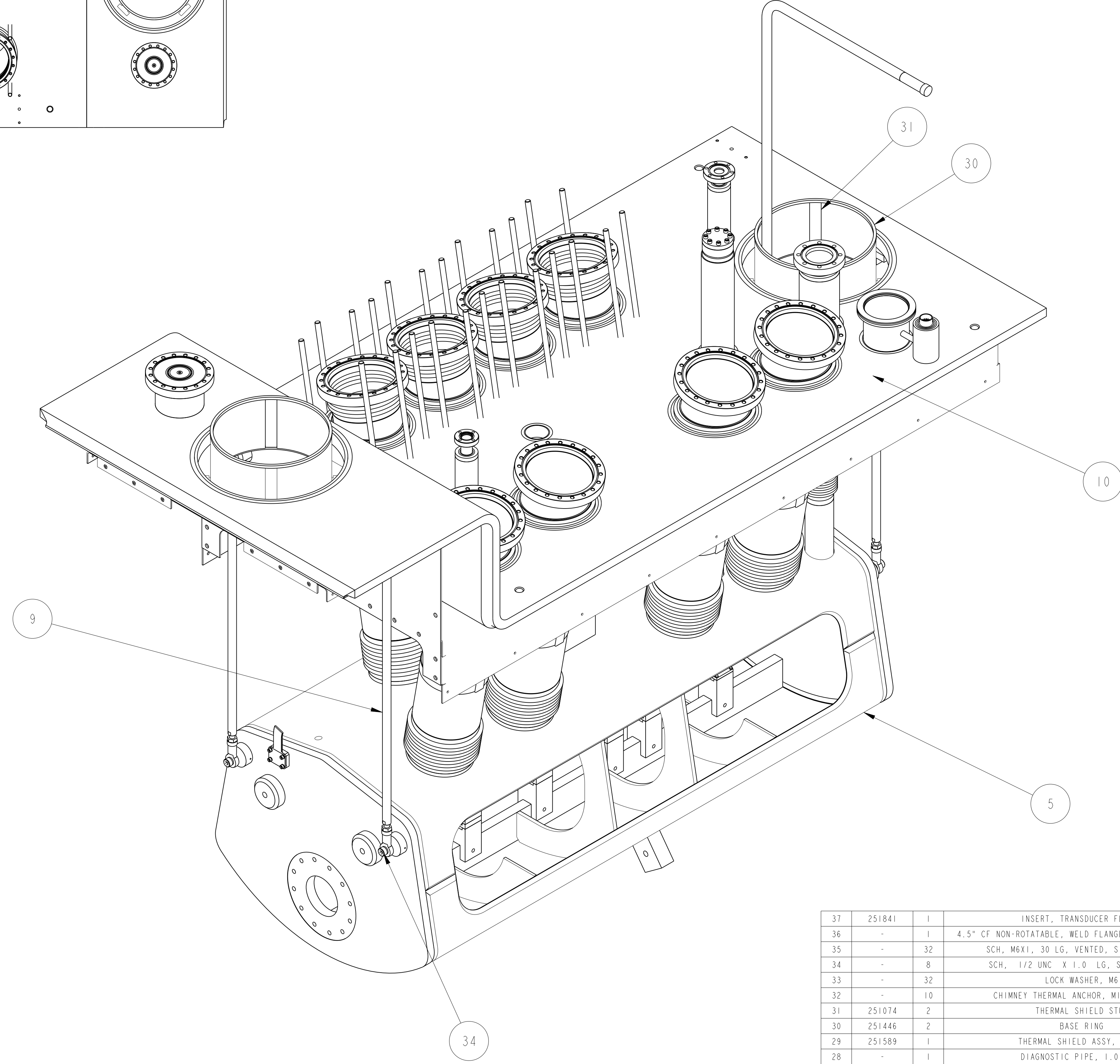
SCALE 1/8

C

C



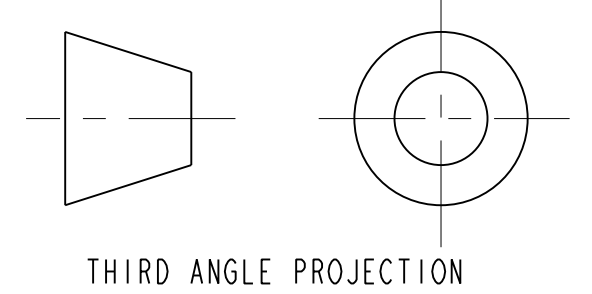
SCALE 3/16



SCALE 3/16

- NOTES: UNLESS OTHERWISE SPECIFIED.
- DIMENSIONS AND TOLERANCING PER ANSI Y14.5M-1982 UNITS ARE IN INCHES UNLESS OTHERWISE SPECIFIED.
  - USE OF SULFUR OR SILICONE BEARING OILS, LUBRICANTS, OR COOLANTS ARE STRICTLY PROHIBITED.
  - USE OF RESIN OR RUBBER BONDED ABRASIVES UNDER POWER IS STRICTLY PROHIBITED. USE VITREOUS BONDED ABRASIVES ONLY.
  - CLEAN AFTER MACHINING PER VENDOR SPECIFICATION; SUBJECT TO LBNL APPROVAL.
  - VENDOR SUGGESTED CHANGES TO WELD PREPS; SUBJECT TO LBNL APPROVAL.
  - PROTECT FINISHED PART BY BAGGING OR SIMILAR METHOD TO PROTECT AND MAINTAIN CLEANLINESS DURING SHIPMENT AND STORAGE.
  - VENDOR SUGGESTED CHANGES TO TOLERANCES TO FACILITATE ASSEMBLY; SUBJECT TO LBNL APPROVAL.
  - DIMENSIONS SHOWN IN THE INSPECTION OVAL ARE REFERENCED IN THE FABRICATION TRAVELER.
  - ALL COMPONENTS TO BE INSULATED PER MLI SPECIFICATION PROVIDED BY THE VENDOR. SUBJECT TO LBNL APPROVAL.

ITEM	PART NO.	QTY	DESCRIPTION	MATERIAL
37	251841	1	INSERT, TRANSDUCER FLANGE	SS 304L
36	-	1	4.5" CF NON-ROTATABLE WELD FLANGE FOR 2.5 DIA PIPE	SS 304L
35	-	32	SCH. MK1, 30 LG. VENTED, SILVER PLATED	SS 18-8
34	-	8	SCH. 1/2 UNC X 1.0 LG. SILVER PLATE	SS 18-8
33	-	32	LOCK WASHER, MS	SS
32	-	10	CHIMNEY THERMAL ANCHOR, MIN A/L: .09"	COPPER, OFHC, C101
31	251074	2	THERMAL SHIELD STUB	COPPER, OFHC, C101
30	251446	2	BASE RING	COPPER, OFHC, C101
29	251589	1	THERMAL SHIELD ASSY, DFBXA	CDAD10
28	-	1	DIAGNOSTIC PIPE, 1.0 PIPE	304L SS
27	-	1	CONFLAT, NON-ROTATABLE, 2"	304L SS
26	-	1	VENT SLEEVE 3"PIPE	304L SS
25	25M865	10	WELD FLANGE, CHIMNEY TUBE	304L SS
24	25M864	1	VENT SLEEVE CAP	304L SS
23	25M855	2	DH SLEEVE CAP	304L SS
22	251842	1	TUBE, 4.25 X 3" LONG	304L SS
21	-	2	2.0" TUBE X 6.78 LG	304L SS
20	25M819	16	PLATE, 2 HOLE	304L SS
19	-	1	TUBE, 2.5 OD X .049 WALL	300 SERIES SS
18	25M817	1	BELLOWS, 2.5 BORE, HYSPAN FILE H-1339-2	300 SERIES SS
17	25M816	1	BELLOWS, 1.0 BORE	300 SERIES SS
16	25M816	1	BELLOWS, 1.0 BORE, HYSPAN FILE H-1339-1	300 SERIES SS
15	251849	1	CONFLAT, 6" NON-ROTATABLE FLANGE	300 SERIES SS
14	251334	4	M12 X 1.75 ROD, 9.04 LG	18-8 SS
13	251333	8	M12 X 1.75 ROD, 9.22 LG	18-8 SS
12	251332	4	M12 X 1.75 ROD, 10.75 LG	18-8 SS
11	251331	8	M12 X 1.75 ROD, 10.54 LG	18-8 SS
10	25M851	2	SHORT VERTICAL SUPPORT ASSEMBLY	-
9	25M850	2	LONG VERTICAL STRUT ROD ASSEMBLY	-
8	251635	1	DH VENT PIPE	-
7	251146	1	TOP PLATE WELDMENT IPI LEFT	-
6	251161	1	CHECK VALVE ASSY	-
5	251575	1	LIQUID HELIUM TANK - B PORT LEFT	-
4	251327	4	HTS CHIMNEY ASSY TOP	-
3	251177	1	4 1/2" PUMPING PORT, CRYOGENIC DIAGNOSTIC ASSY.	-
2	251175	4	VAPOR COOLED LEAD CHIMNEY ASSY	-
1	251174	4	HTS CHIMNEY ASSY LOWER	-



REV	DWG	CHK	ZONE	DATE	CHANGES
A	JDRDPO			10/7/02	INITIAL RELEASE

UNLESS OTHERWISE SPECIFIED	SHOP ORDERS
TOLERANCES: X.X ± 0.1 FRACTION ± 1/64	NO. OF PARTS
X.XX ± 0.03 ANGLES ± 1.00°	DATE
X.XXX ± 0.010 FINISH: 125 μm	REV
DO NOT SCALE PRINT	
THREADS ARE CLASS 2	
CHAMFER ENDS OF ALL SCREW THREADS 30°	
OUT ROUND, 1.5 THREAD RELIEF ON MACHINED THREADS	
BREAK EDGES .016 MAX. ON MACHINED WORK	
REMOVE BURRS, WELD SPATTER & LOOSE SCALE	
IN ACCORDANCE WITH ADP 114.5M X 1.0M.1	

**ERNEST ORLANDO LAWRENCE**  
**BERKELEY NATIONAL LABORATORY**  
 UNIVERSITY OF CALIFORNIA - BERKELEY

LHC IR FEEDBOX  
 MAJOR ASSEMBLY  
 TOP PLATE WELDMENT SUBASSY IPI LEFT

MICROFILMED: DWG. TYPE: SHOWN ON: DO NOT SCALE PRINTS  
 ASSEM 24C351 SCALE: 1/4 SHEET 1 OF 4  
 PATENT CLEAR: DESIGN ACCT. NO. CATEGORY CODE: DWG. NO. 251506  
 25LCE2 LH2001

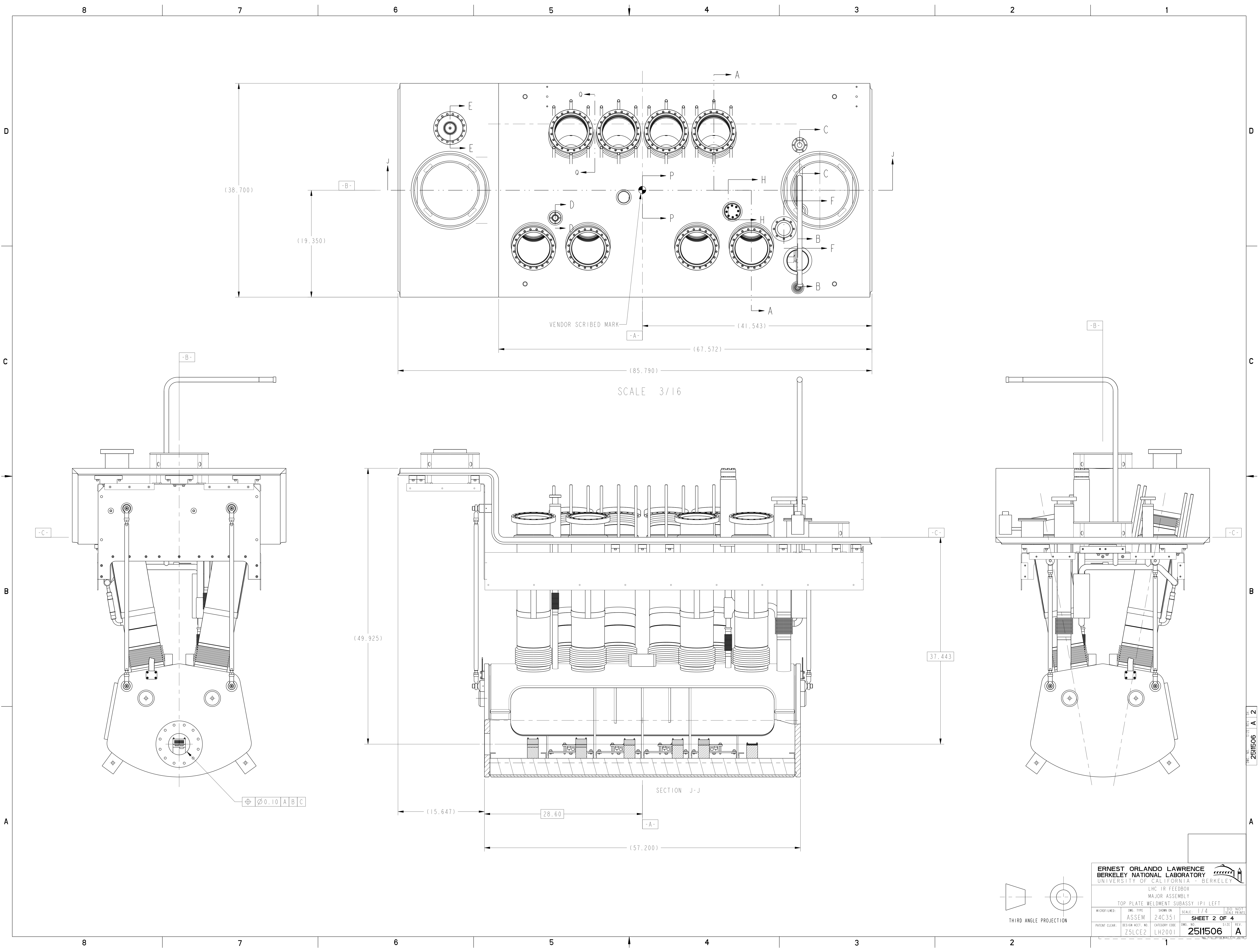
DATE: 29-Sep-02  
 DATE: 04-APR-02  
 DATE: 04-APR-02

8 7 6 5 4 3 2 1

A

A

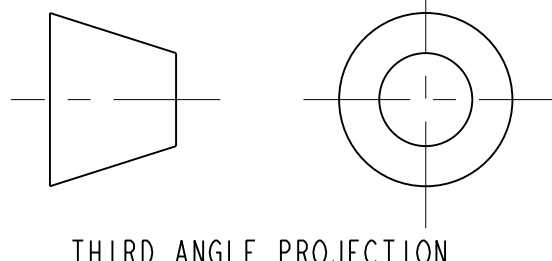
251506 A 1



SCALE 3/16

SECTION J-J

<b>ERNEST ORLANDO LAWRENCE</b> UNIVERSITY OF CALIFORNIA BERKELEY			
LHC IR FEEDBOX MAJOR ASSEMBLY TOP PLATE WELDMENT SUBASSY IPI LEFT			
MICROFILMED:	DWG. TYPE:	SHOWN ON:	SCALE:
	ASSEM	24C351	1/4
PATENT CLEAR:	DESIGN ACCT. NO.	CATEGORY CODE:	DWG. NO.
	Z5LCE2	LH2001	2511506
			DO NOT SCALE PRINTS
			SHEET 2 OF 4
			SIZE REV.
			A



DWG. NO. 2511506

SHEET 2 OF 4

REV. A

REV. A

REV. A

REV. A

REV. A

REV. A

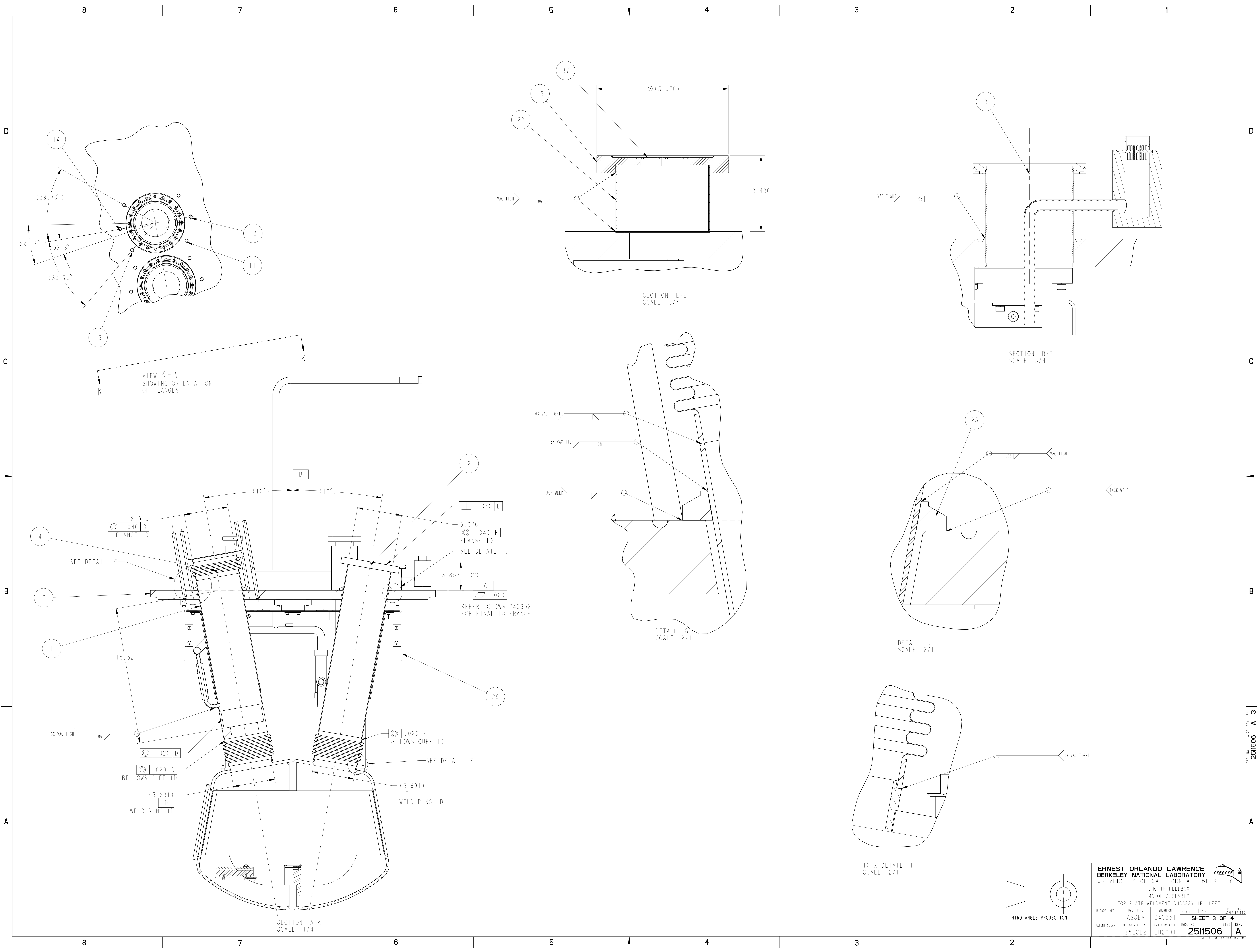
REV. A

REV. A

REV. A

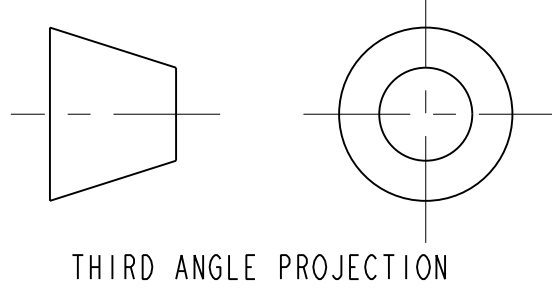
REV. A

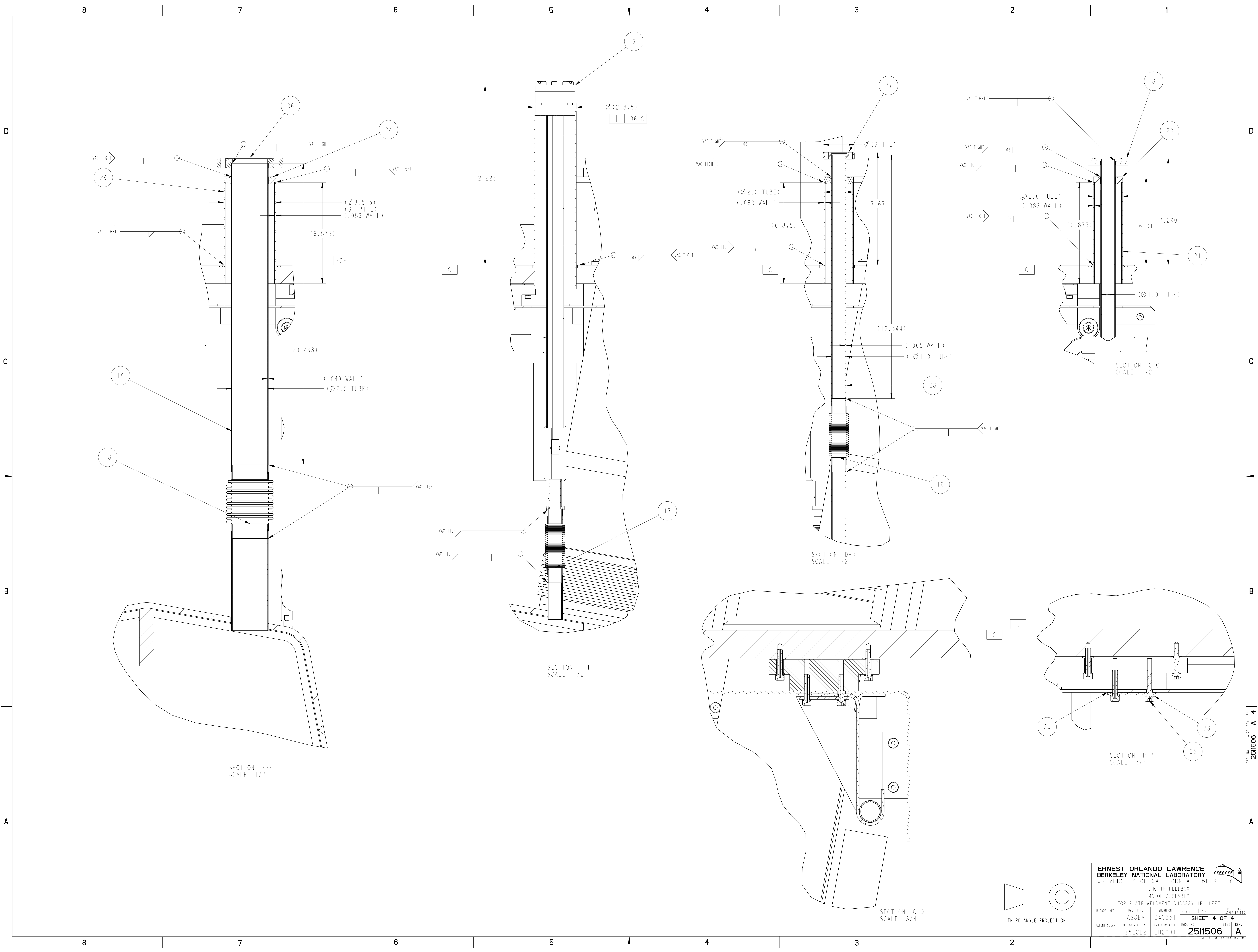
REV. A



<b>ERNEST ORLANDO LAWRENCE</b> UNIVERSITY OF CALIFORNIA BERKELEY			
LHC IR FEEDBOX MAJOR ASSEMBLY TOP PLATE WELDMENT SUBASSY IPI LEFT			
MICROFILMED:	DWG. TYPE:	SHOWN ON:	SCALE:
	ASSEM	24C351	1/4
SHEET 3 OF 4			DO NOT SCALE PRINTS
PATENT CLEAR:	DESIGN ACCT. NO:	CATEGORY CODE:	DWG. NO.:
	ZSLCE2	LH2001	2511506
			SIZE: REV.:
			A

DWG. NO. 2511506 A 3





<b>ERNEST ORLANDO LAWRENCE</b> <b>BERKELEY NATIONAL LABORATORY</b> <small>UNIVERSITY OF CALIFORNIA - BERKELEY</small>			
LHC IR FEEDBOX MAJOR ASSEMBLY TOP PLATE WELDMENT SUBASSY IPI LEFT			
MICROFILMED:	DWG. TYPE:	SHOWN ON:	SCALE:
	ASSEM	24C351	1/4
PATENT CLEAR:	DESIGN ACCT. NO:	CATEGORY CODE:	DWG. NO. REV.
	Z5LCE2	LH2001	2511506 4
			<b>SHEET 4 OF 4</b> <b>2511506</b> <b>A</b>