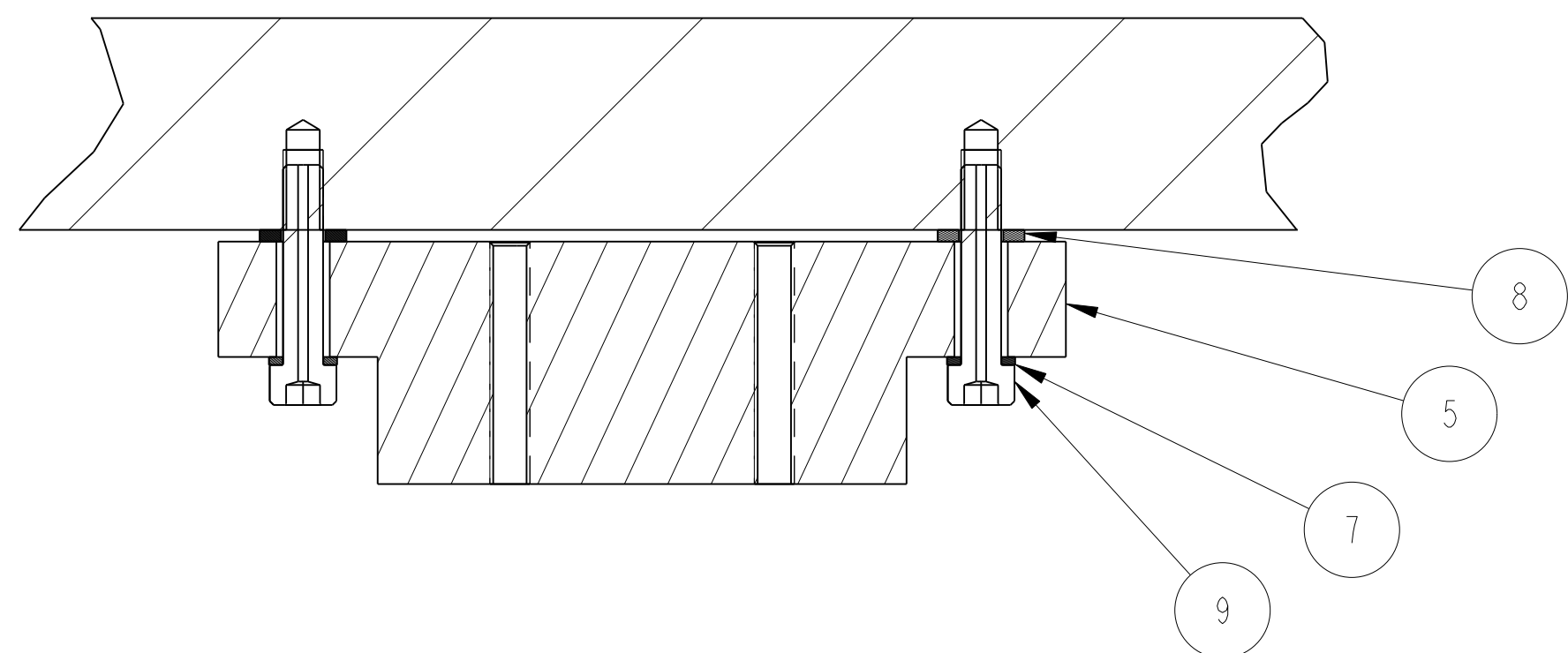
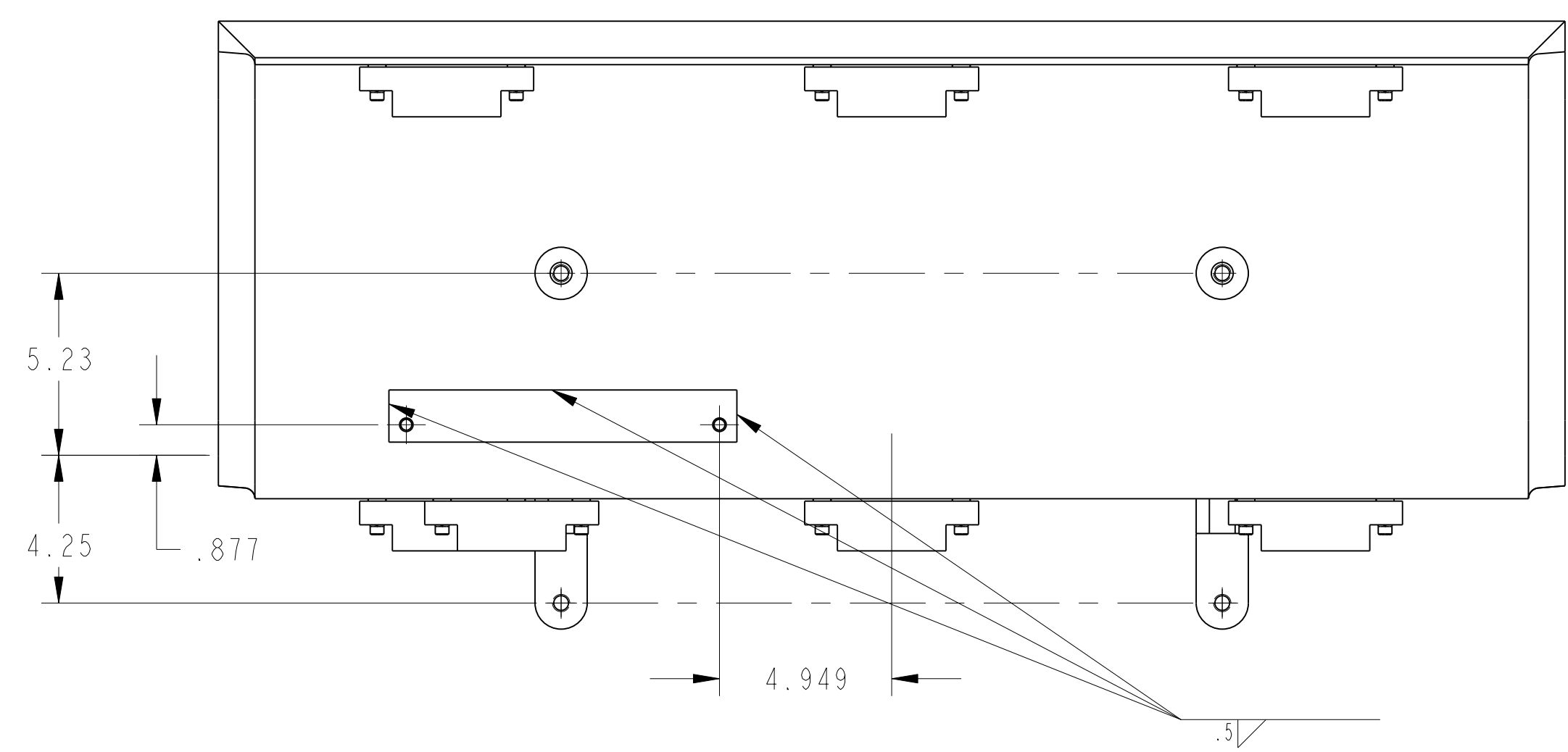


8 7 6 5 4 3 2 1

D

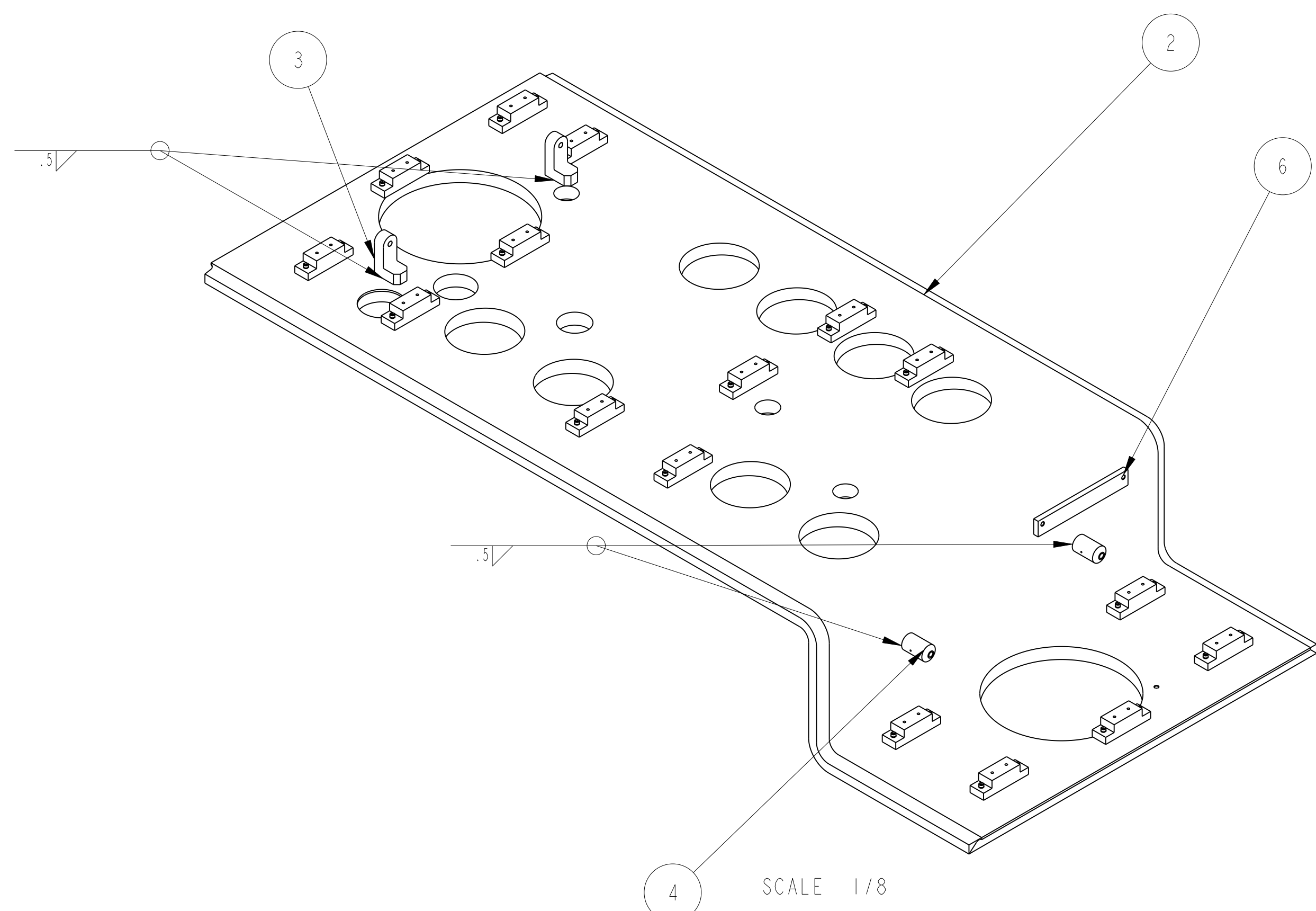
D



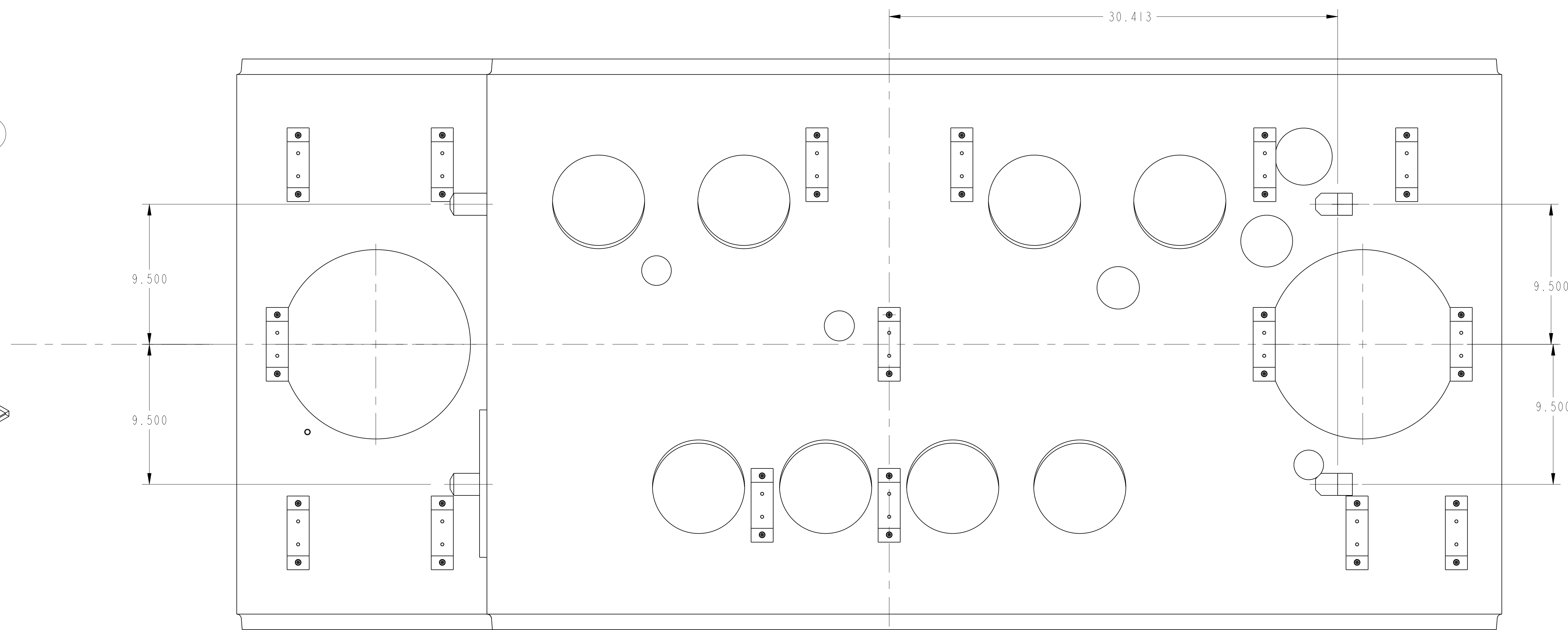
SECTION A-A
SCALE 1/1

C

C



SCALE 1/8



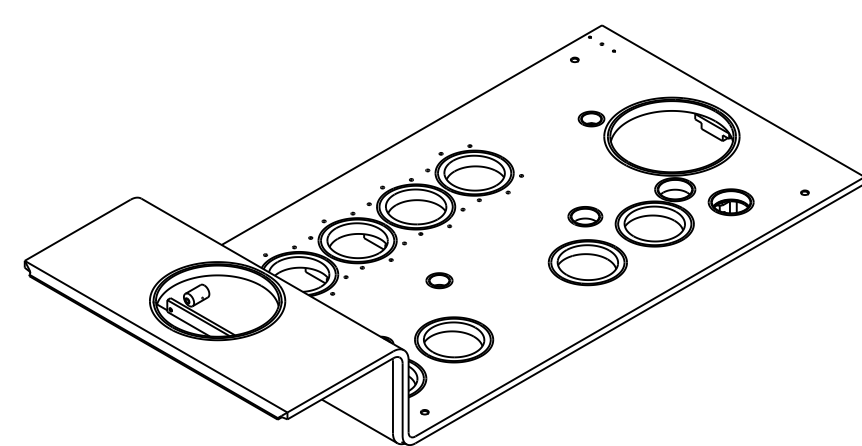
B

B

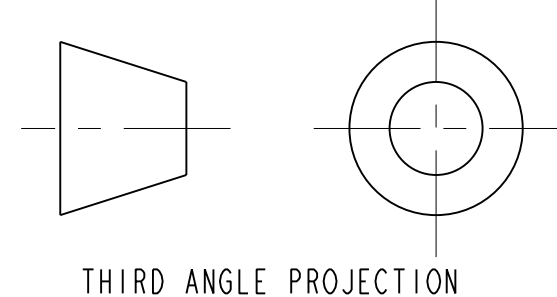
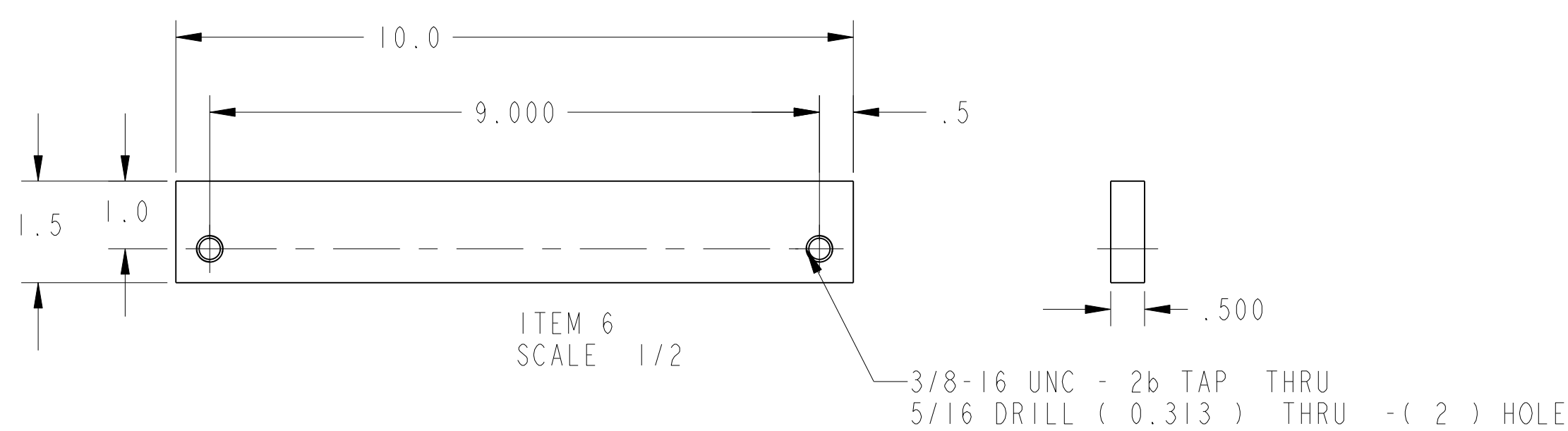
NOTES: UNLESS OTHERWISE SPECIFIED,

1. DIMENSIONS AND TOLERANCING PER ANSI Y14.5M-1982 UNITS ARE IN INCHES UNLESS OTHERWISE SPECIFIED.
2. USE OF SULFUR OR SILICONE BEARING OILS, LUBRICANTS, OR COOLANTS ARE STRICTLY PROHIBITED.
3. USE OF RESIN OR RUBBER BONDED ABRASIVES UNDER POWER IS STRICTLY PROHIBITED. USE VITREOUS BONDED ABRASIVES ONLY.
4. VENDOR WELD PROCEDURE SUBJECT TO LBNL APPROVAL.
7. ESTIMATED WEIGHT = 1,130 LBS

A



SCALE 1/20



THIRD ANGLE PROJECTION

8 7 6 5 4 3 2 1

ITEM	PART NO.	QTY	DESCR	MATERIAL
9	-	32	SCH, MXX1, 30 LG, VENTED, SILVER PLATED	SS 18-8
8	-	32	WASHER, MG	SS
7	-	32	LOCK WASHER, MG	SS
6	-	1	XB THRUST PLATE	304L SS
5	251081	16	SPACER	NEMA 610
4	25M861	2	STRUT BOSS	304L SS
3	25M854	2	STRUT BRACKET	304L SS
2	251876	1	TOP PLATE D'BOX E, 1PS LEFT	304L SS

ERNEST ORLANDO LAWRENCE
BERKELEY NATIONAL LABORATORY
UNIVERSITY OF CALIFORNIA - BERKELEY

LHC IR FEEDBOX
VACUUM

TOP PLATE WELDMENT 1PS LEFT

REV	DATE	BY	CHKD	ZONE	DATE
A	10/7/02	JDR	DPQ		

INITIAL RELEASE

CHANGES

2511496 A 1