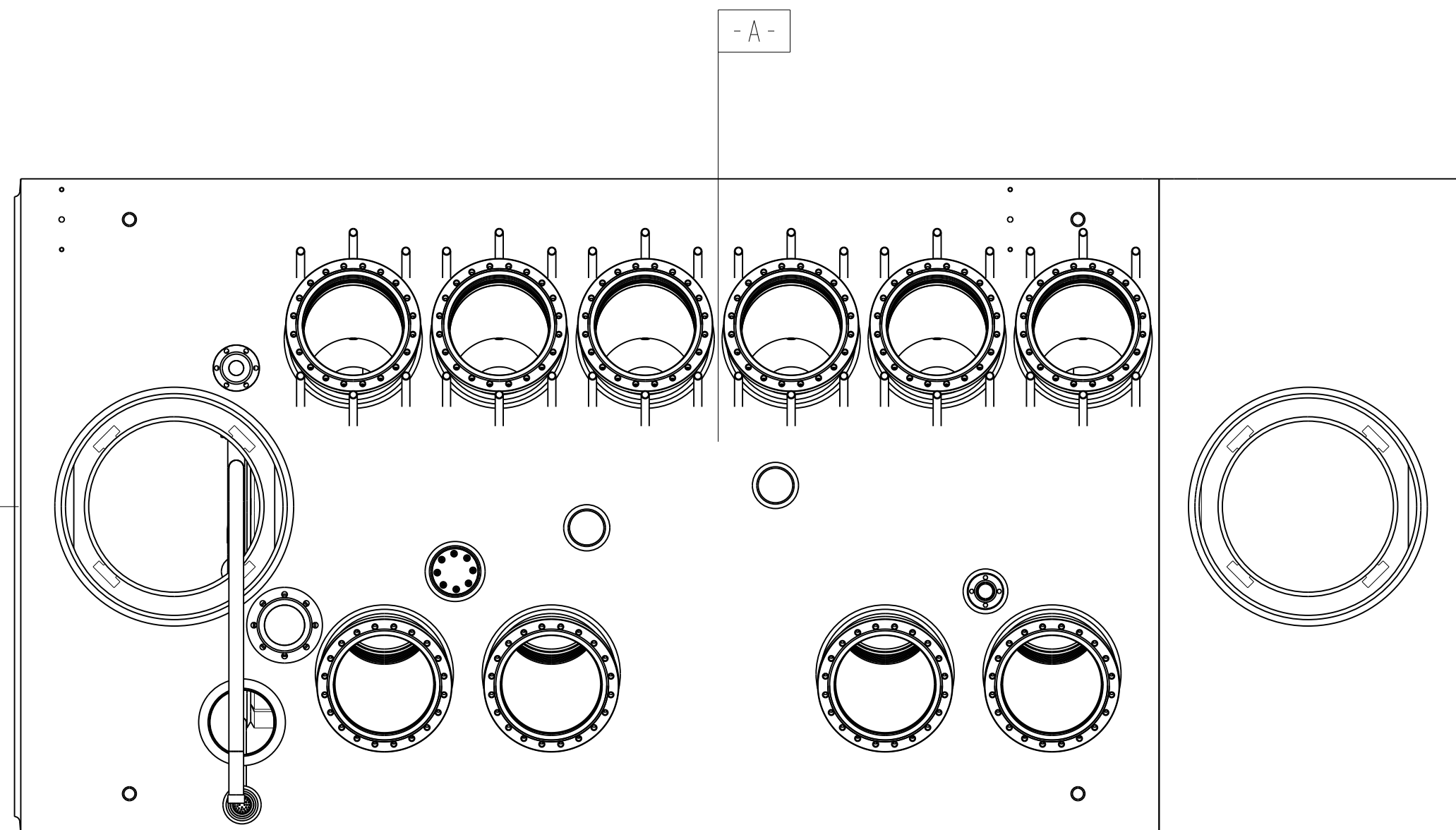


D

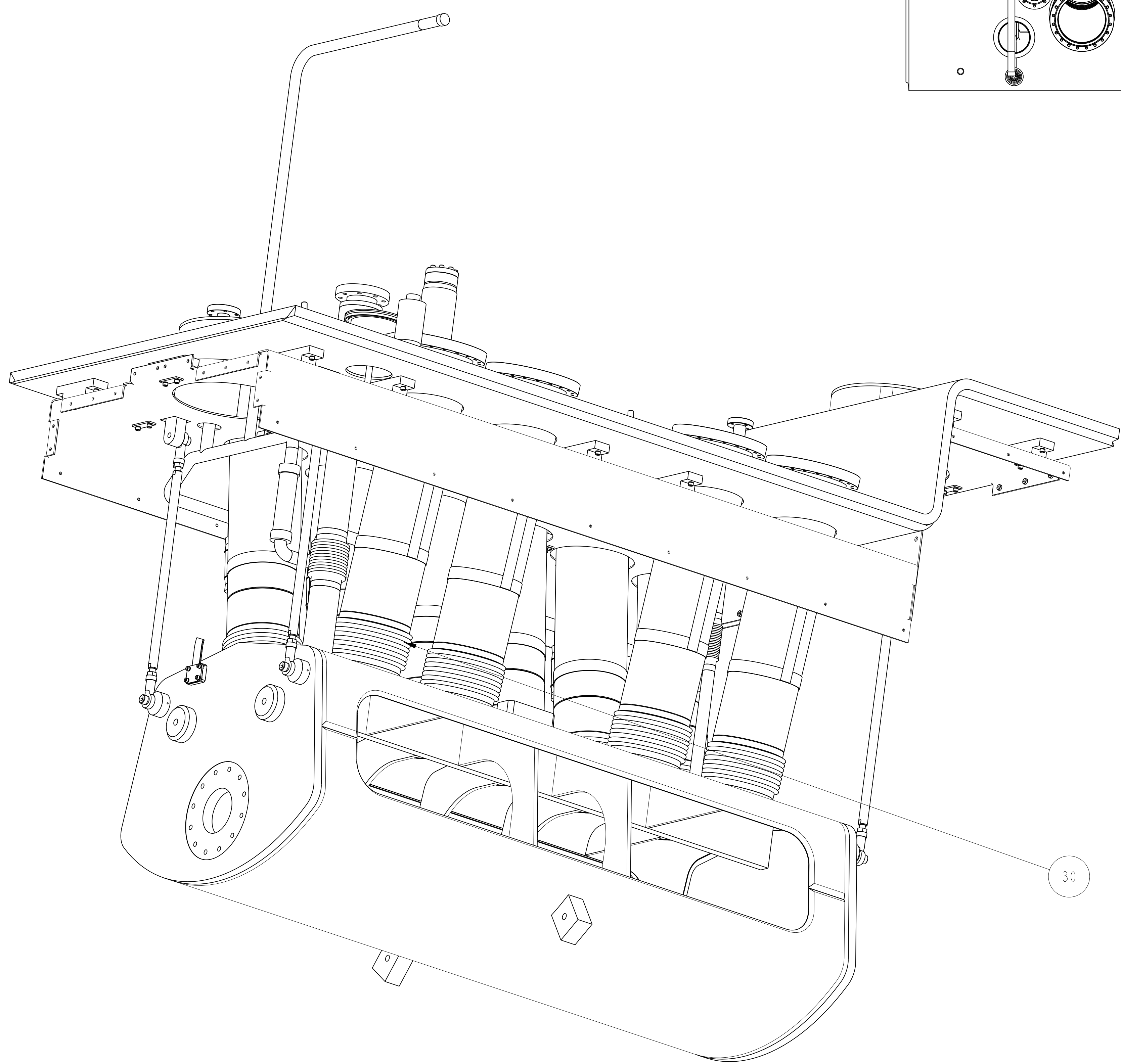
D



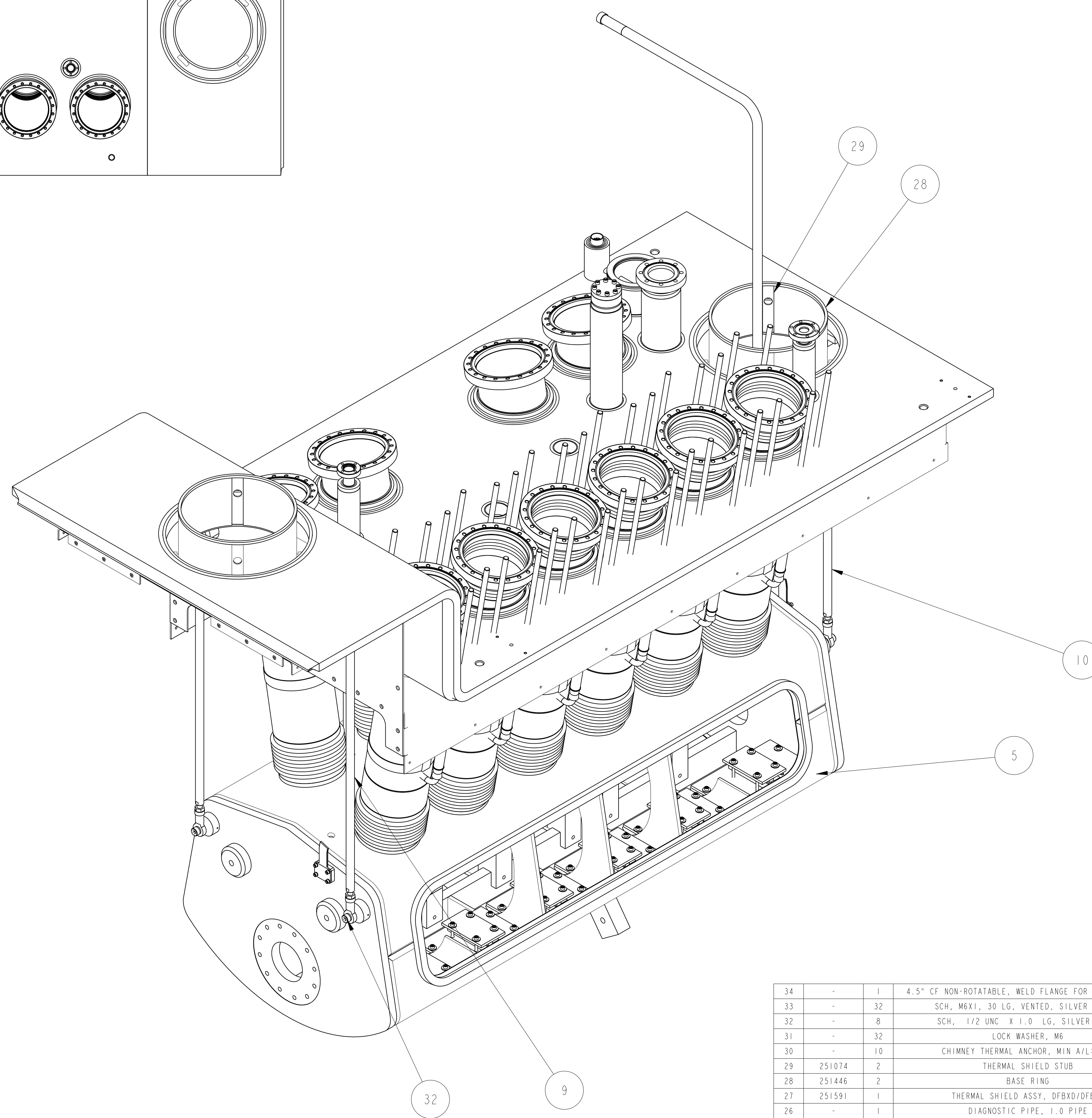
SCALE 1/8

C

C



SCALE 3/16



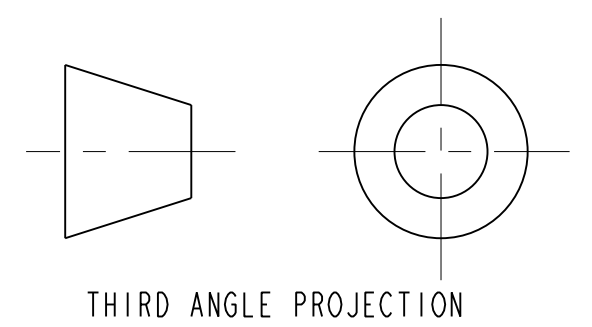
SCALE 3/16

B

B

- NOTES: UNLESS OTHERWISE SPECIFIED.
- DIMENSIONS AND TOLERANCING PER ANSI Y14.5M-1982 UNITS ARE IN INCHES UNLESS OTHERWISE SPECIFIED.
 - USE OF SULFUR OR SILICONE BEARING OILS, LUBRICANTS, OR COOLANTS ARE STRICTLY PROHIBITED.
 - USE OF RESIN OR RUBBER BONDED ABRASIVES UNDER POWER IS STRICTLY PROHIBITED. USE VITREOUS BONDED ABRASIVES ONLY.
 - CLEAN AFTER MACHINING PER VENDOR SPECIFICATION; SUBJECT TO LBNL APPROVAL.
 - VENDOR SUGGESTED CHANGES TO WELD PREPS; SUBJECT TO LBNL APPROVAL.
 - PROTECT FINISHED PART BY BAGGING OR SIMILAR METHOD TO PROTECT AND MAINTAIN CLEANLINESS DURING SHIPMENT AND STORAGE.
 - VENDOR SUGGESTED CHANGES TO TOLERANCES TO FACILITATE ASSEMBLY; SUBJECT TO LBNL APPROVAL.
 - DIMENSIONS SHOWN IN THE INSPECTION OVAL ARE REFERENCED IN THE FABRICATION TRAVELER.
 - ALL COMPONENTS TO BE INSULATED PER MLI SPECIFICATION PROVIDED BY THE VENDOR. SUBJECT TO LBNL APPROVAL.

ITEM	PART NO.	REQD	DESCRIPTION	MATERIAL
34	-	1	4.5" CF NON-ROTATABLE, WELD FLANGE FOR 2.5 DIA PIPE	SS 304L
33	-	32	SCH. 80X1, 30 LG. VENTED, SILVER PLATED	SS 18-8
32	-	8	SCH. 1/2 UNC. X 1.0 LG. SILVER PLATE	SS 18-8
31	-	32	LOCK WASHER, MS	SS
30	-	10	CHIMNEY THERMAL ANCHOR, MIN A/L: .09"	COPPER, OFHC, C101
29	251074	2	THERMAL SHIELD STUB	COPPER, OFHC, C101
28	251446	2	BASE RING	COPPER, OFHC, C101
27	251591	1	THERMAL SHIELD ASSY, DFBXD/DFBXH	CDAT01
26	-	1	DIAGNOSTIC PIPE, 1.0 PIPE	304L SS
25	-	1	CONFLAT, NON-ROTATABLE, 2"	304L SS
24	-	1	VENT SLEEVE 3"PIPE	304L SS
23	25M85	10	WELD FLANGE, CHIMNEY TUBE	304L SS
22	25M84	1	VENT SLEEVE CAP	304L SS
21	25M85	2	DH SLEEVE CAP	304L SS
20	-	2	2.0" TUBE X 6.78 LG	304L SS
19	25M819	16	PLATE, 2 HOLE	304L SS
18	-	1	TUBE, 2.5 OD X .049 WALL	300 SERIES SS
17	25M817	1	BELLOWS, 2.5 BORE, HYSPAN FILE H-1339-2	300 SERIES SS
16	25M816	1	BELLOWS, 1.0 BORE	300 SERIES SS
15	25M816	1	BELLOWS, 1.0 BORE, HYSPAN FILE H-1339-1	300 SERIES SS
14	251334	6	M12 X 1.75 ROD, 9.04 LG	18-8 SS
13	251333	12	M12 X 1.75 ROD, 9.22 LG	18-8 SS
12	251332	6	M12 X 1.75 ROD, 10.75 LG	18-8 SS
11	251331	12	M12 X 1.75 ROD, 10.54 LG	18-8 SS
10	25M851	2	SHORT VERTICAL SUPPORT ASSEMBLY	-
9	25M850	2	LONG VERTICAL STRUT ROD ASSEMBLY	-
8	251241	1	DH VENT PIPE	-
7	251136	1	TOP PLATE WELDMENT IP2.8 RIGHT	-
6	251161	1	CHECK VALVE ASSY	-
5	251573	1	LIQUID HELIUM TANK - 10 PORT RIGHT	-
4	251327	6	HTS CHIMNEY ASSY TOP	-
3	251177	1	4 1/2" PUMPING PORT, CRYOGENIC DIAGNOSTIC ASSY.	-
2	251175	4	VAPOR COOLED LEAD CHIMNEY ASSY	-
1	251174	6	HTS CHIMNEY ASSY LOWER	-



REV	DATE	BY	CHK	ZONE	DATE	INITIAL RELEASE
A	JDRDPO	10/7/02				INITIAL RELEASE

UNLESS OTHERWISE SPECIFIED	SHOP ORDERS	SCALE
TOLERANCES: X.X ± 0.1 FRACTION ± 1/64	NO	1/4
X.XX ± 0.03 ANGLES ± 1.0°	NO	
X.XXX ± 0.010 FINISH 125 μm	NO	
DO NOT SCALE PRINT	NO	
THREAD ANG CLASS 1	NO	
CHAMFER ENDS OF ALL SCREW THREADS 30°	NO	
0.01 ROUND, 1.5 THREAD RELIEF ON MACHINED THREADS	NO	
BREAK EDGES .016 MAX. ON MACHINED WORK	NO	
REMOVE BURRS, WELD SPATTER A LOOSE SCALE	NO	
IN ACCORDANCE WITH ADP 114 SM 1 EN 1	NO	

ERNEST ORLANDO LAWRENCE
BERKELEY NATIONAL LABORATORY
 UNIVERSITY OF CALIFORNIA - BERKELEY

LHC IR FEEDBOX
 MAJOR ASSEMBLY
 TOP PLATE WELDMENT SUBASSY IP288 RIGHT

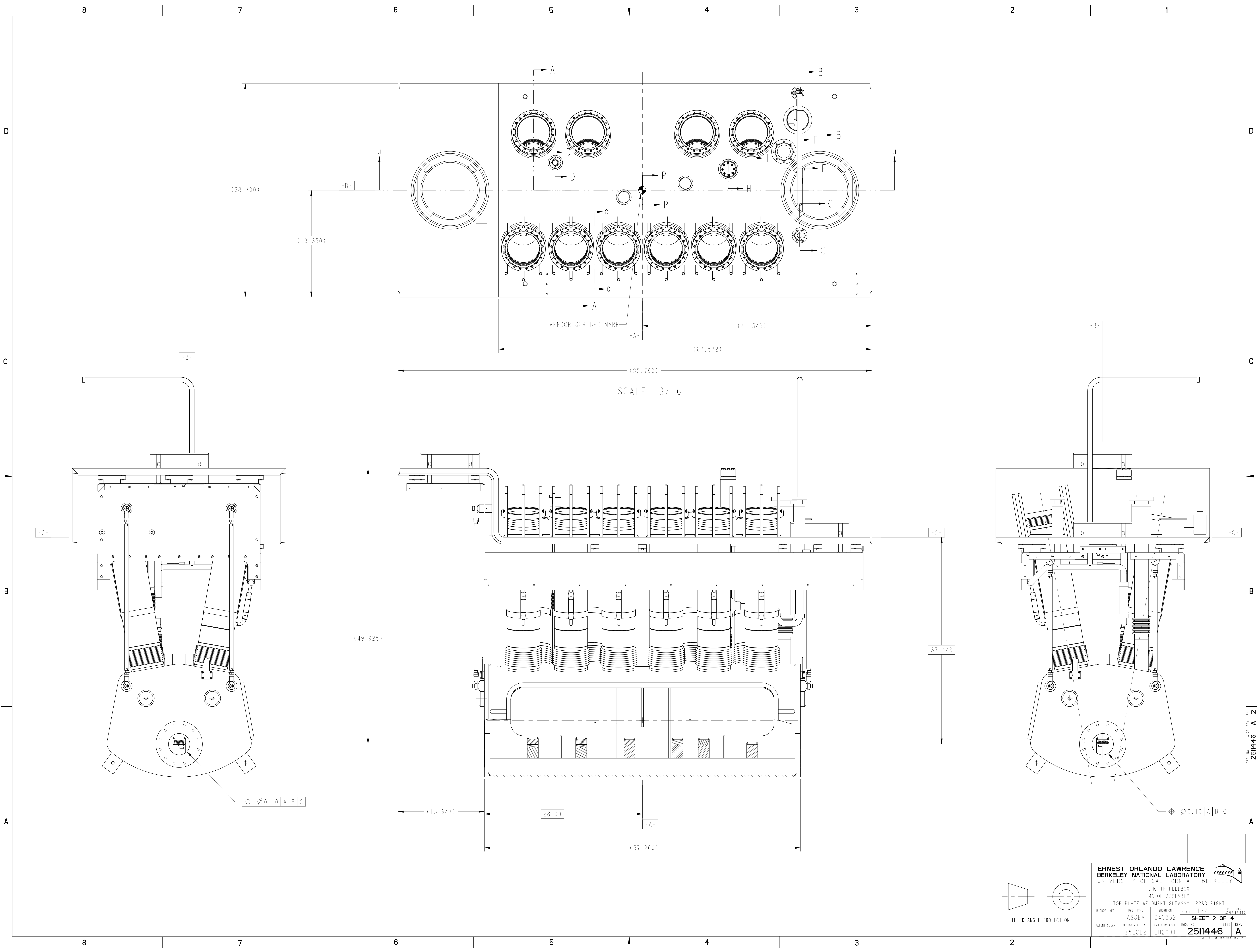
SCALE: 1/4
 SHEET 1 OF 4
 DWG. NO. 2511446
 LHC2001

DATE: 29-Sep-02
 DATE: 04-APR-02
 DATE: 04-APR-02

A

A

2511446 A 1

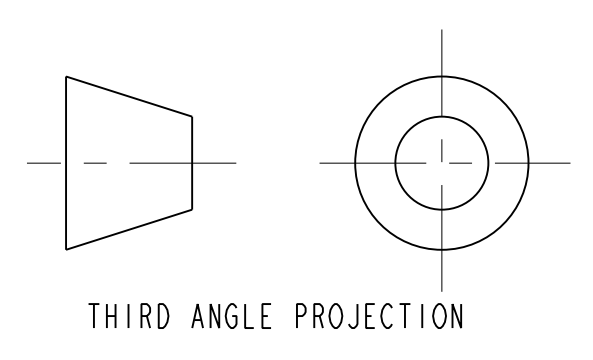


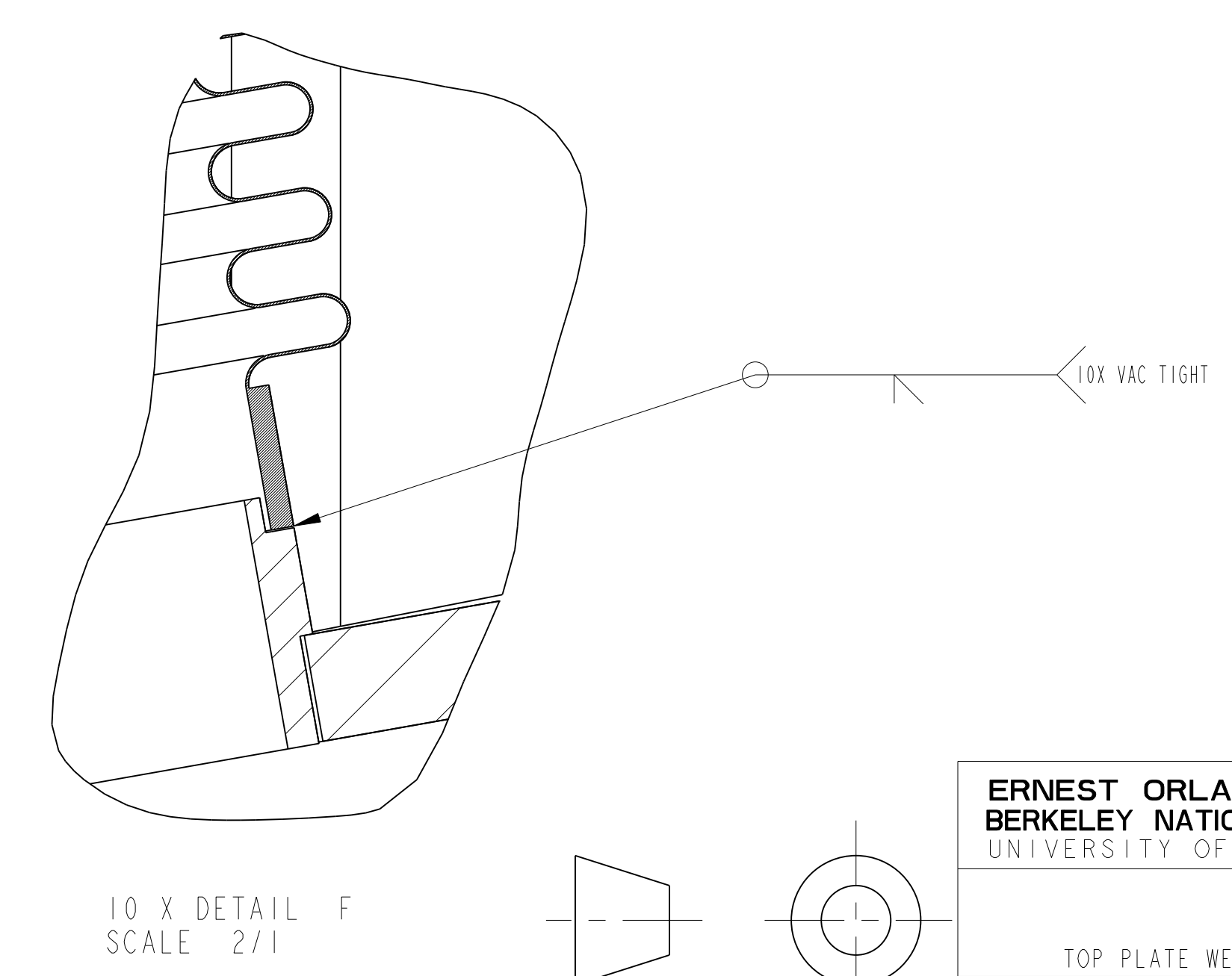
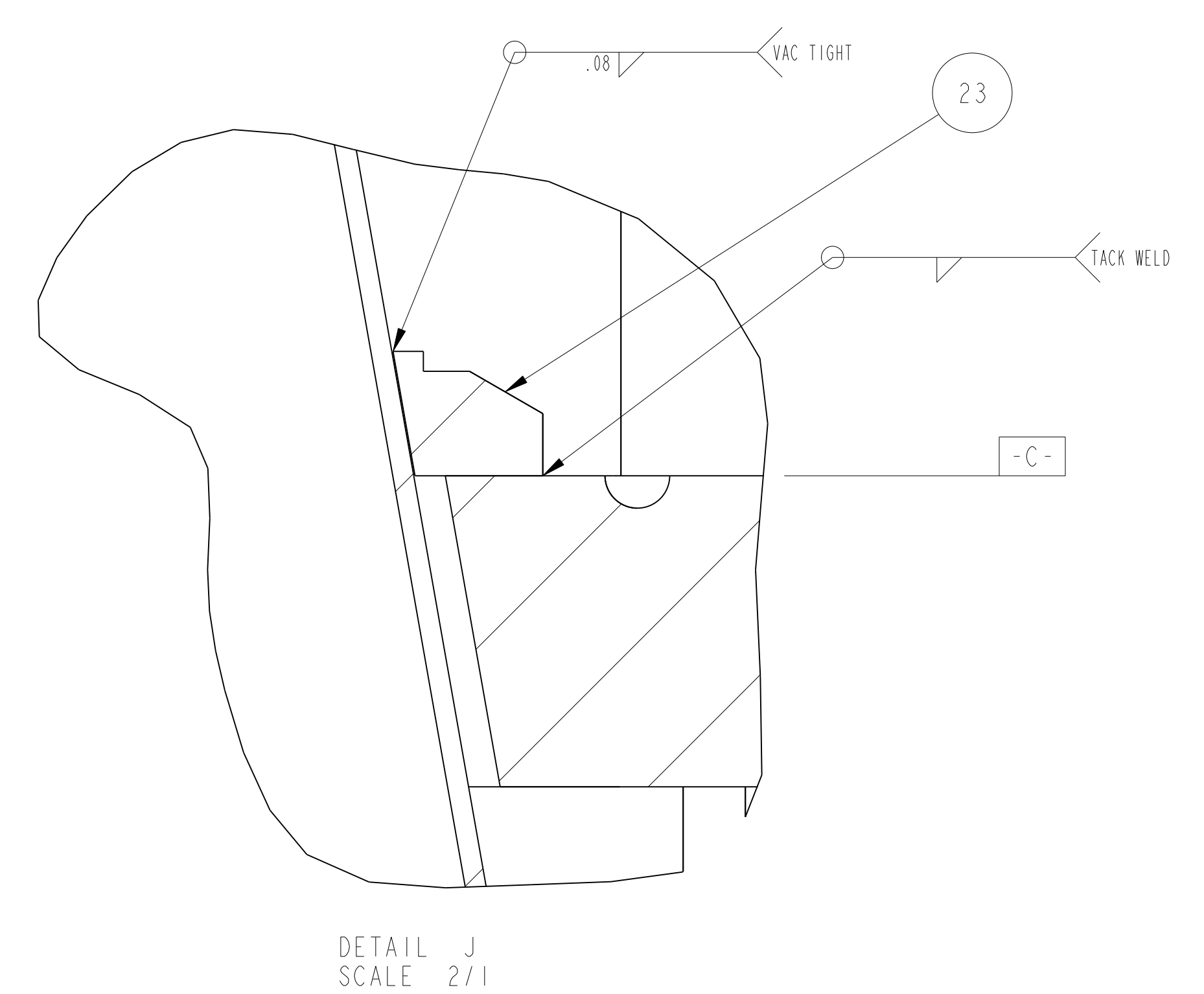
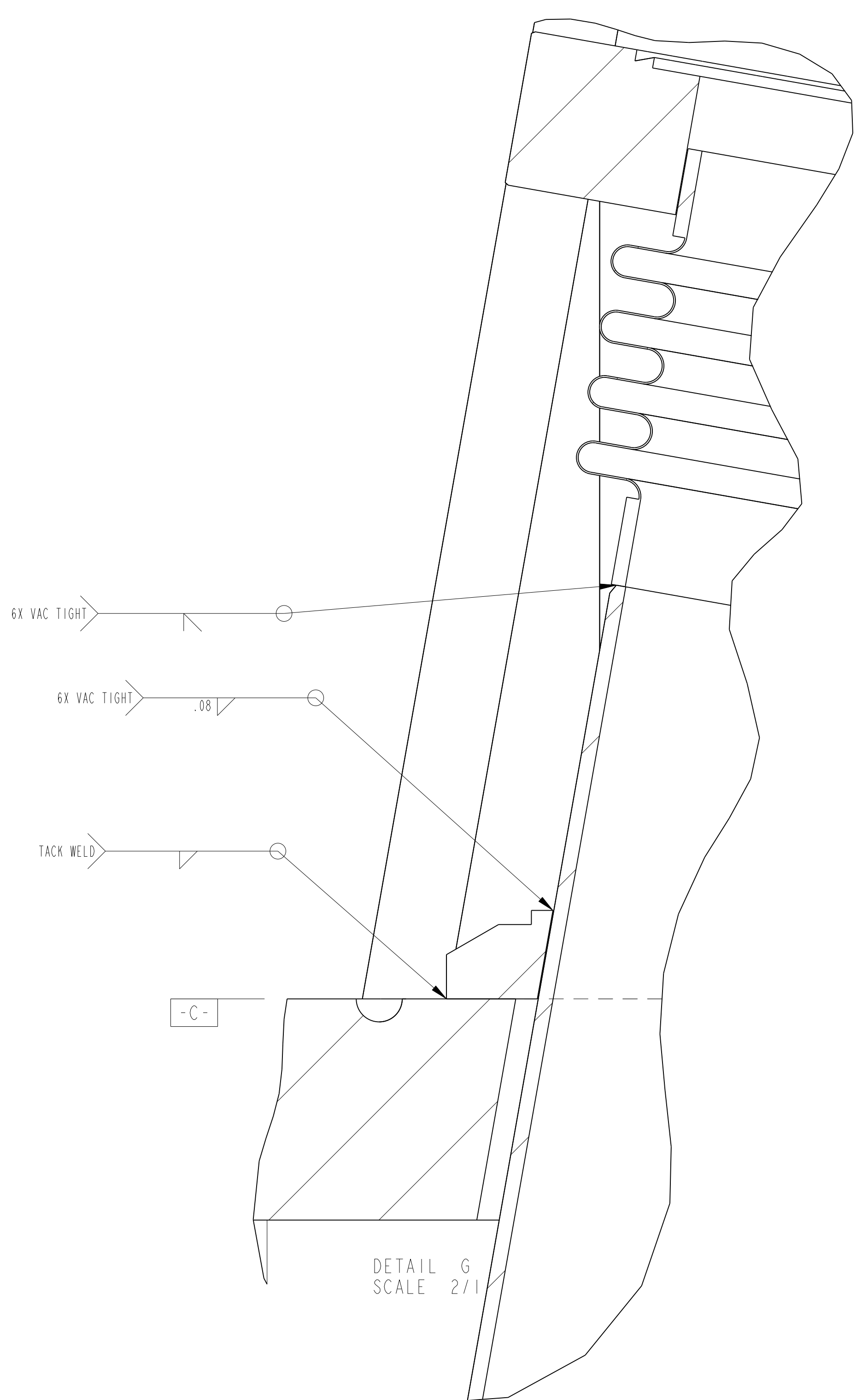
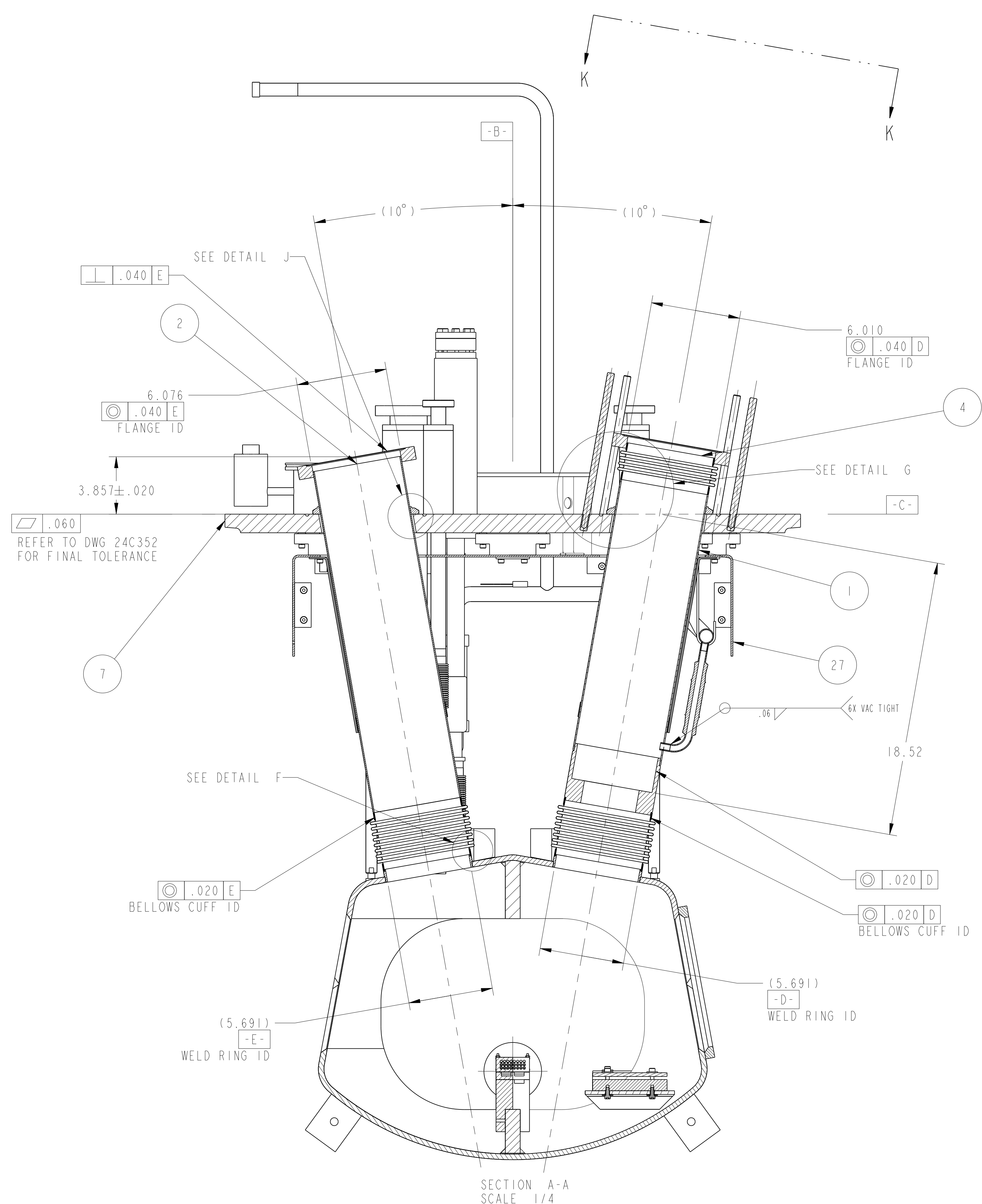
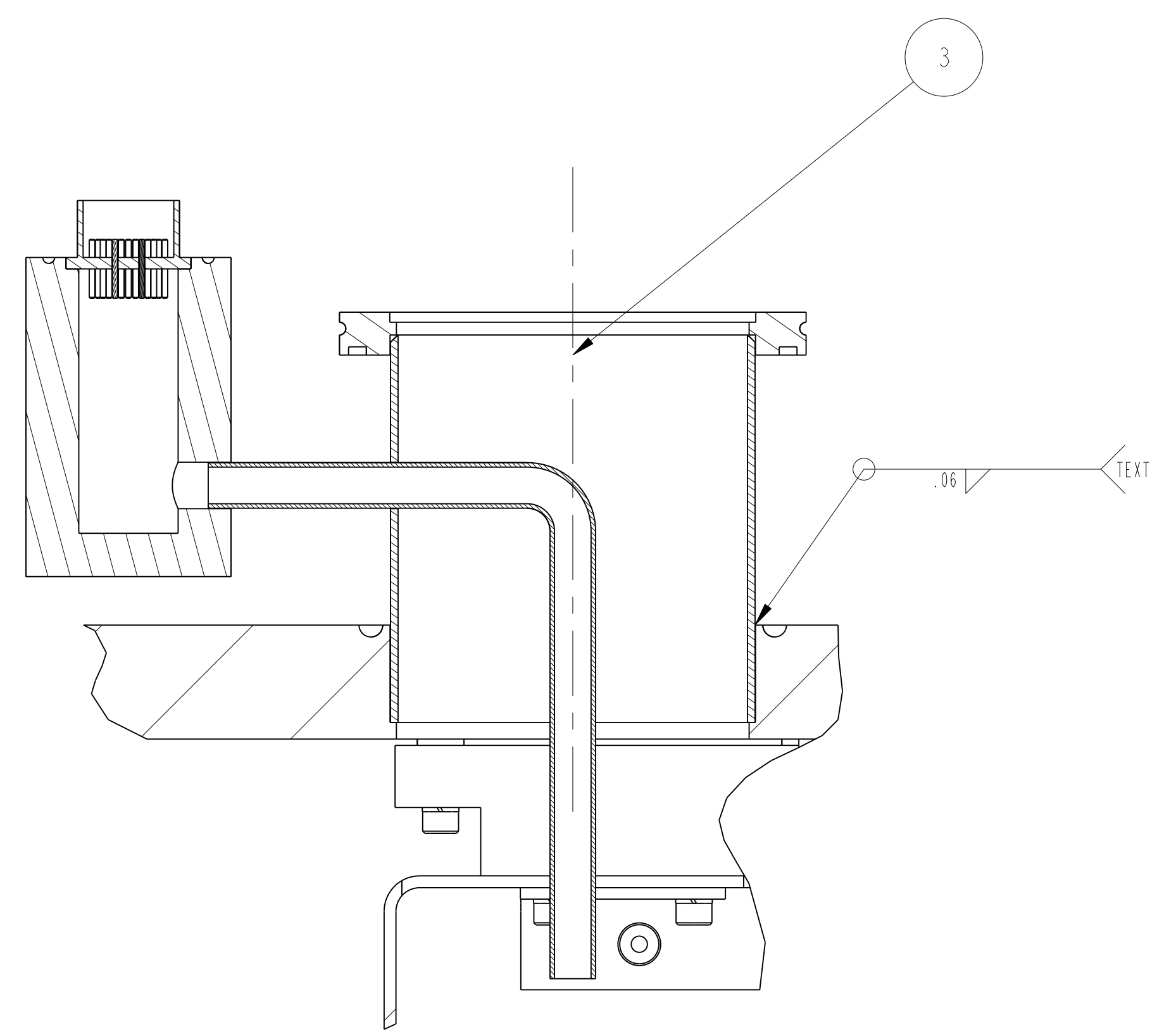
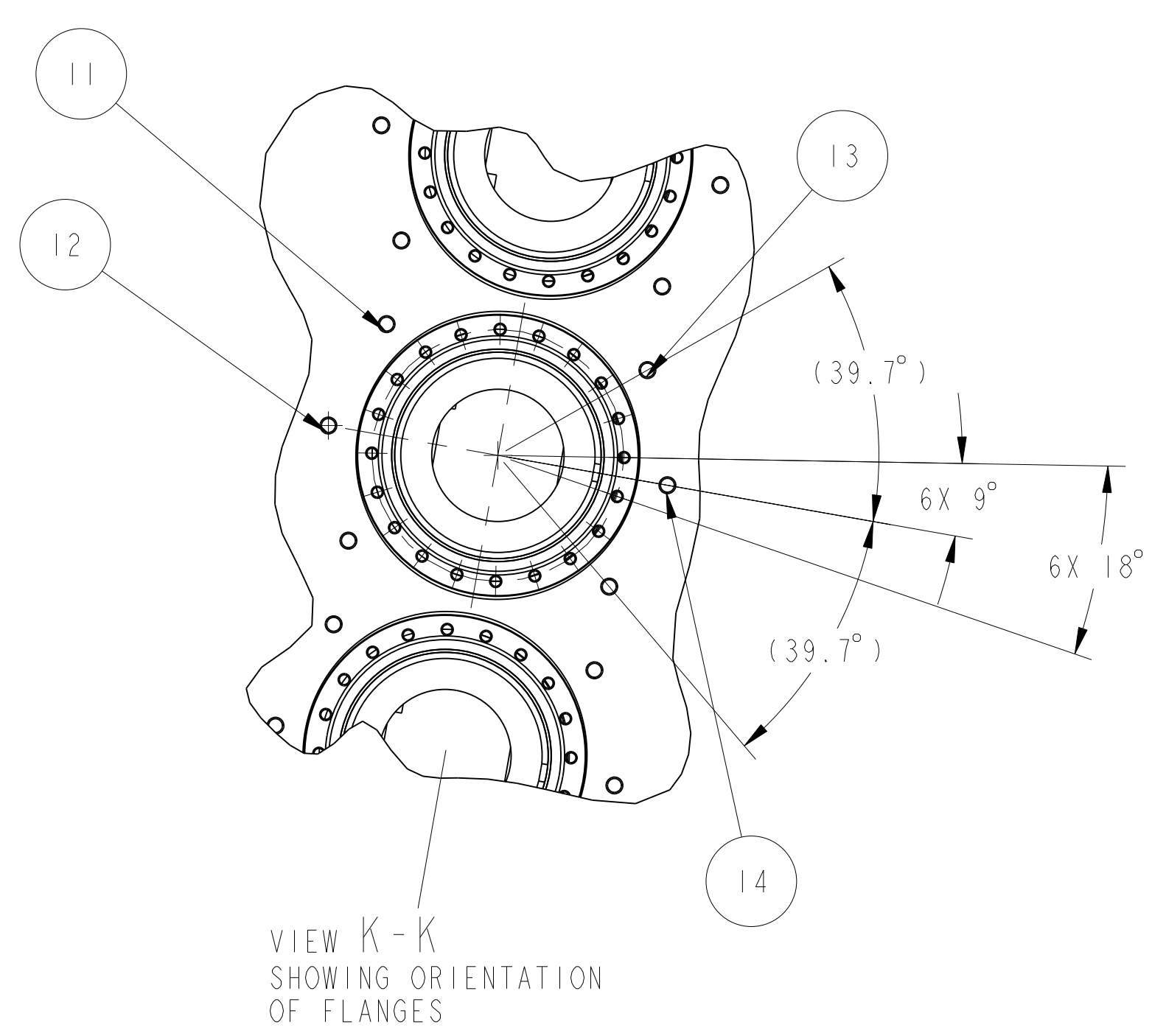
ERNEST ORLANDO LAWRENCE
BERKELEY NATIONAL LABORATORY
 UNIVERSITY OF CALIFORNIA - BERKELEY

LHC IR FEEDBOX
 MAJOR ASSEMBLY
 TOP PLATE WELDMENT SUBASSY IP288 RIGHT

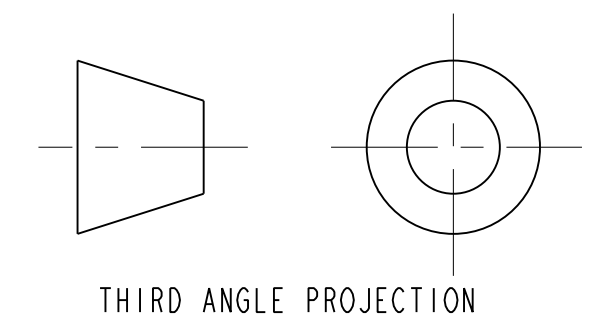
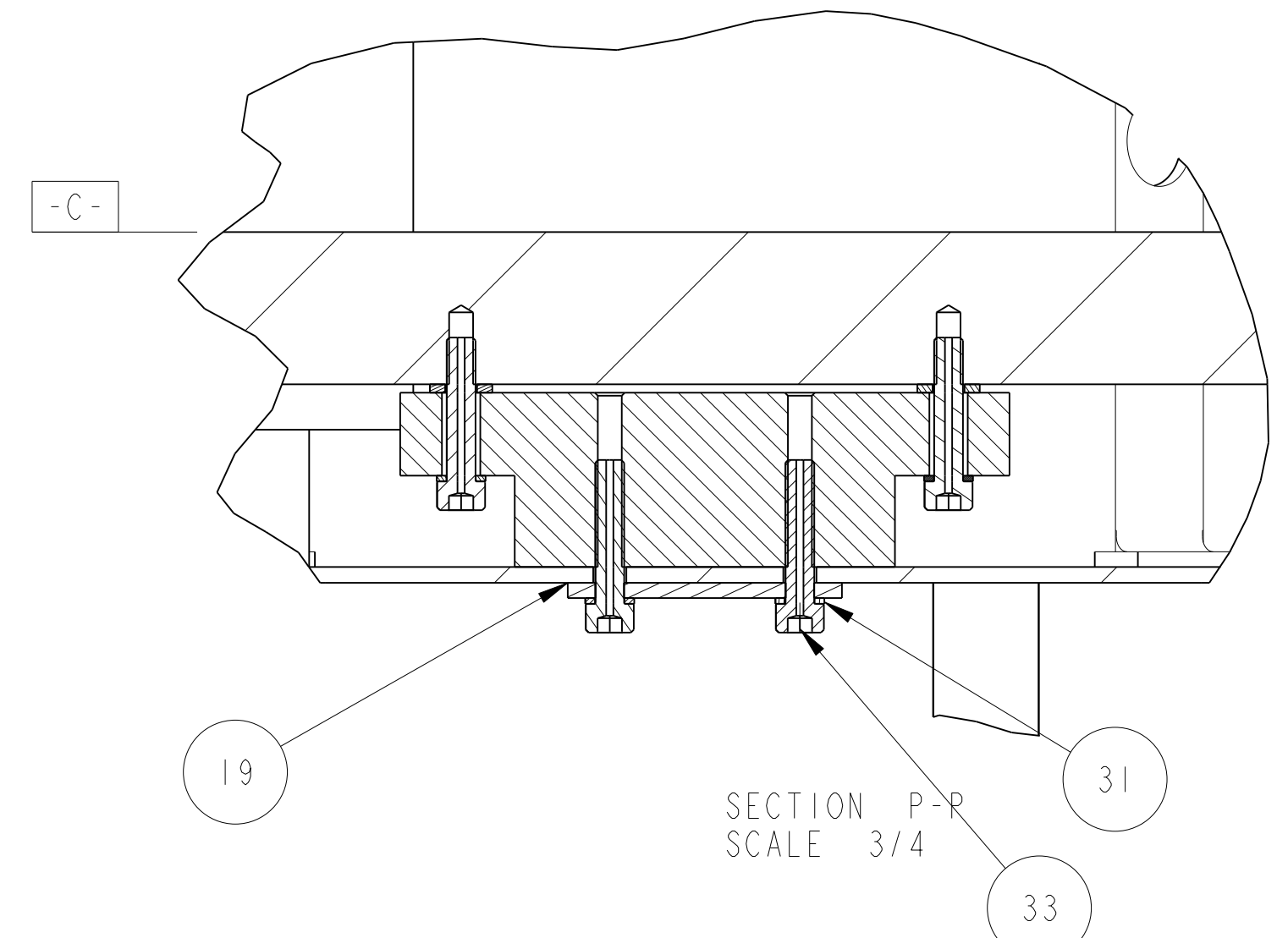
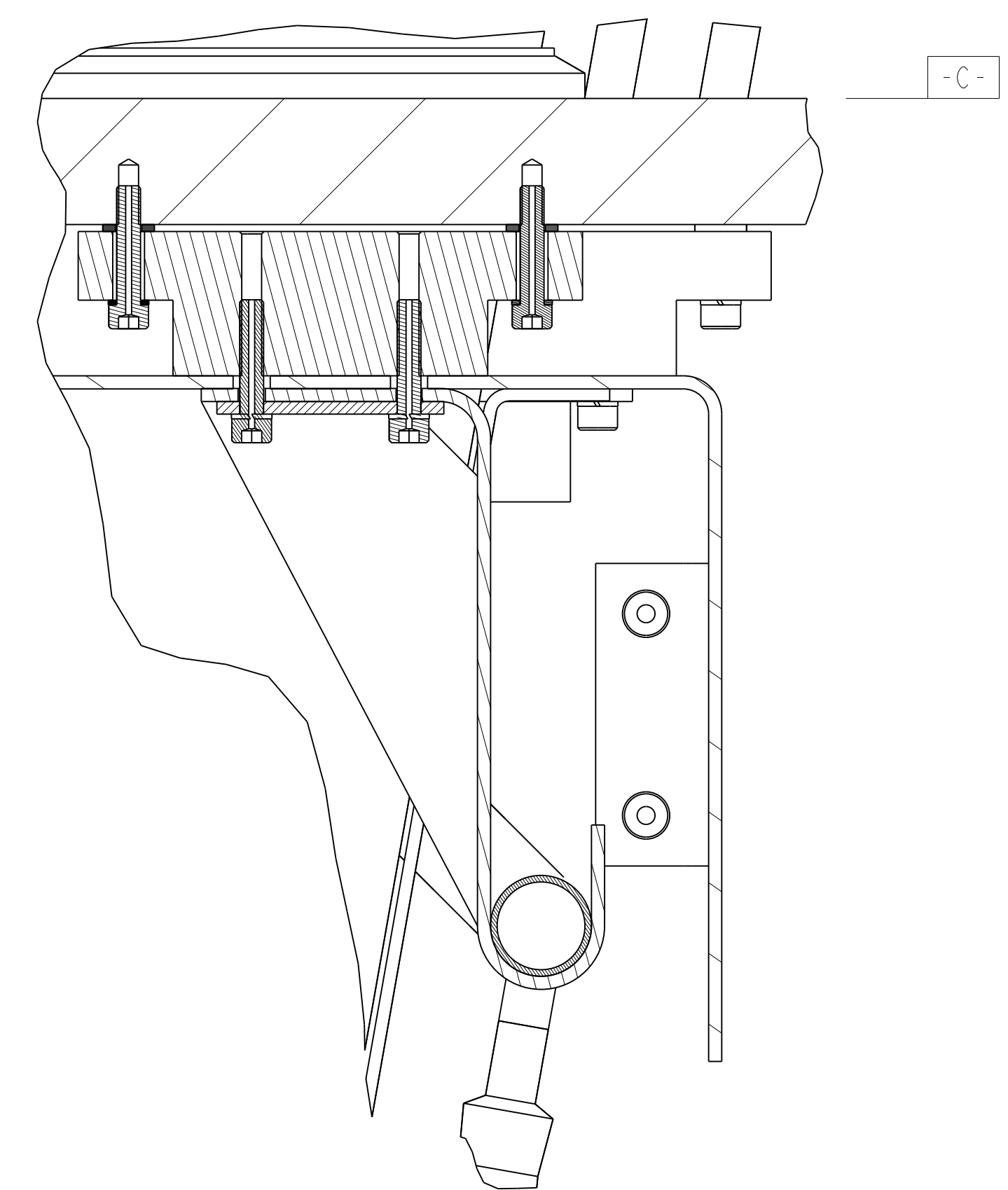
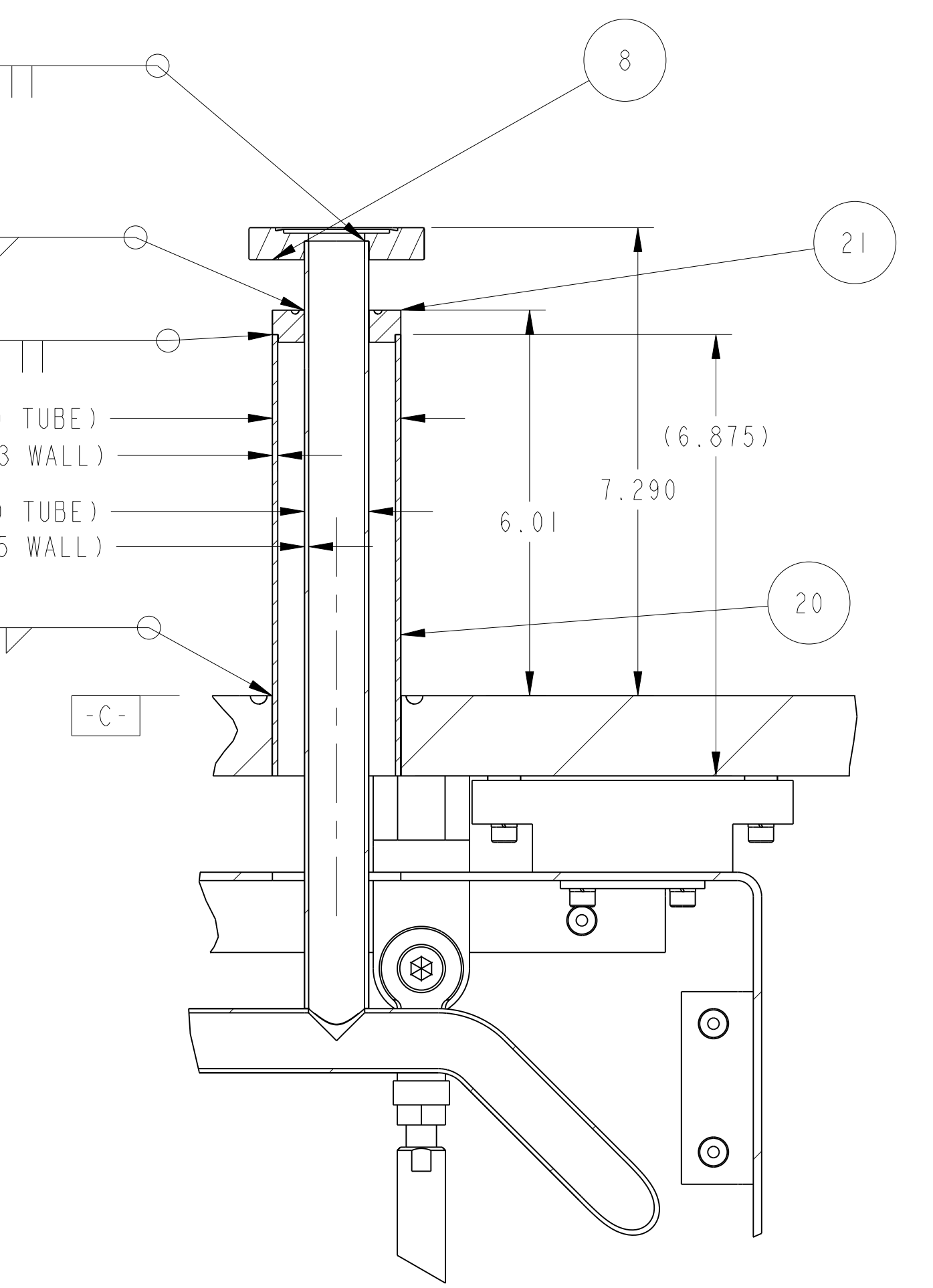
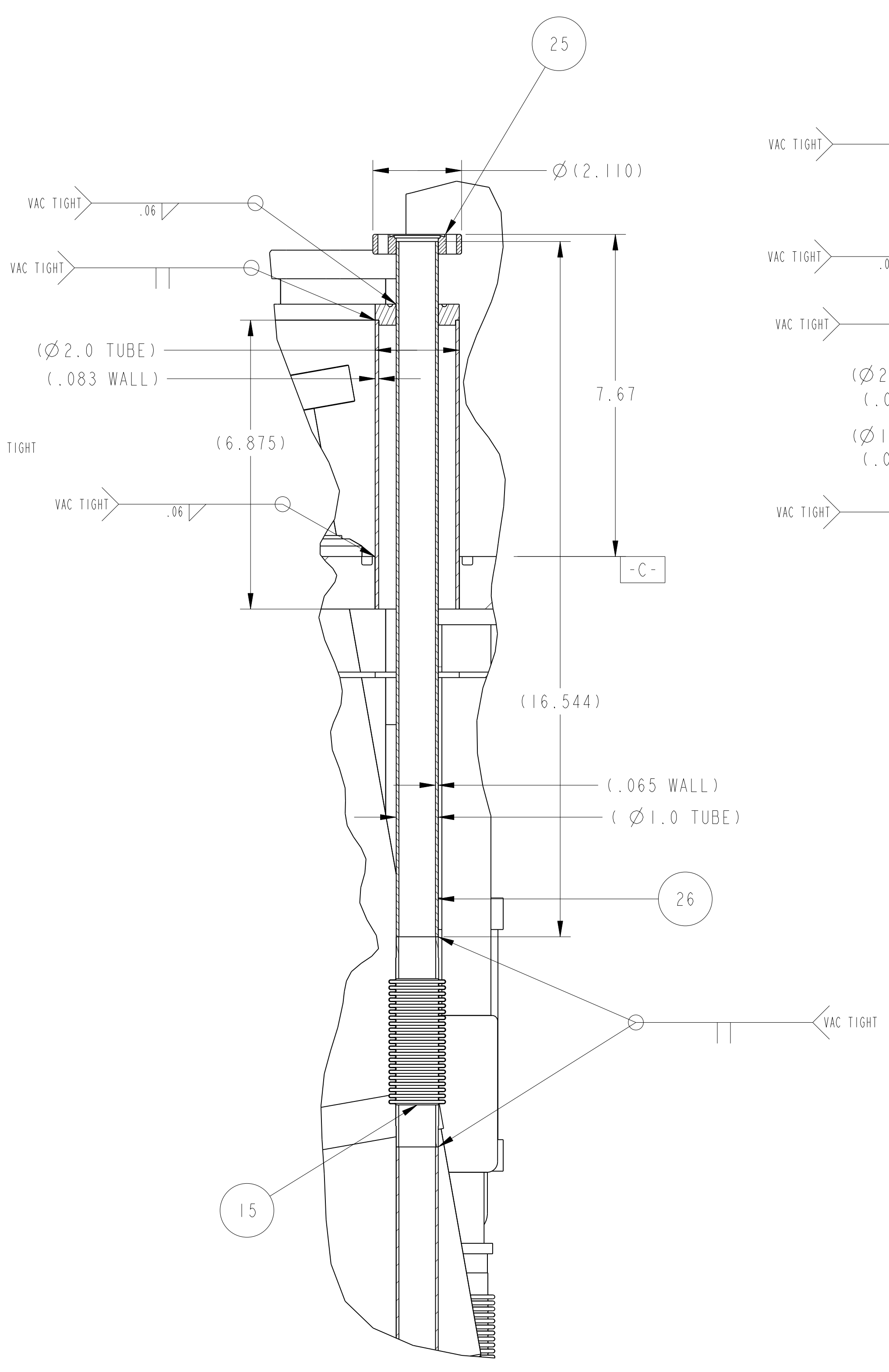
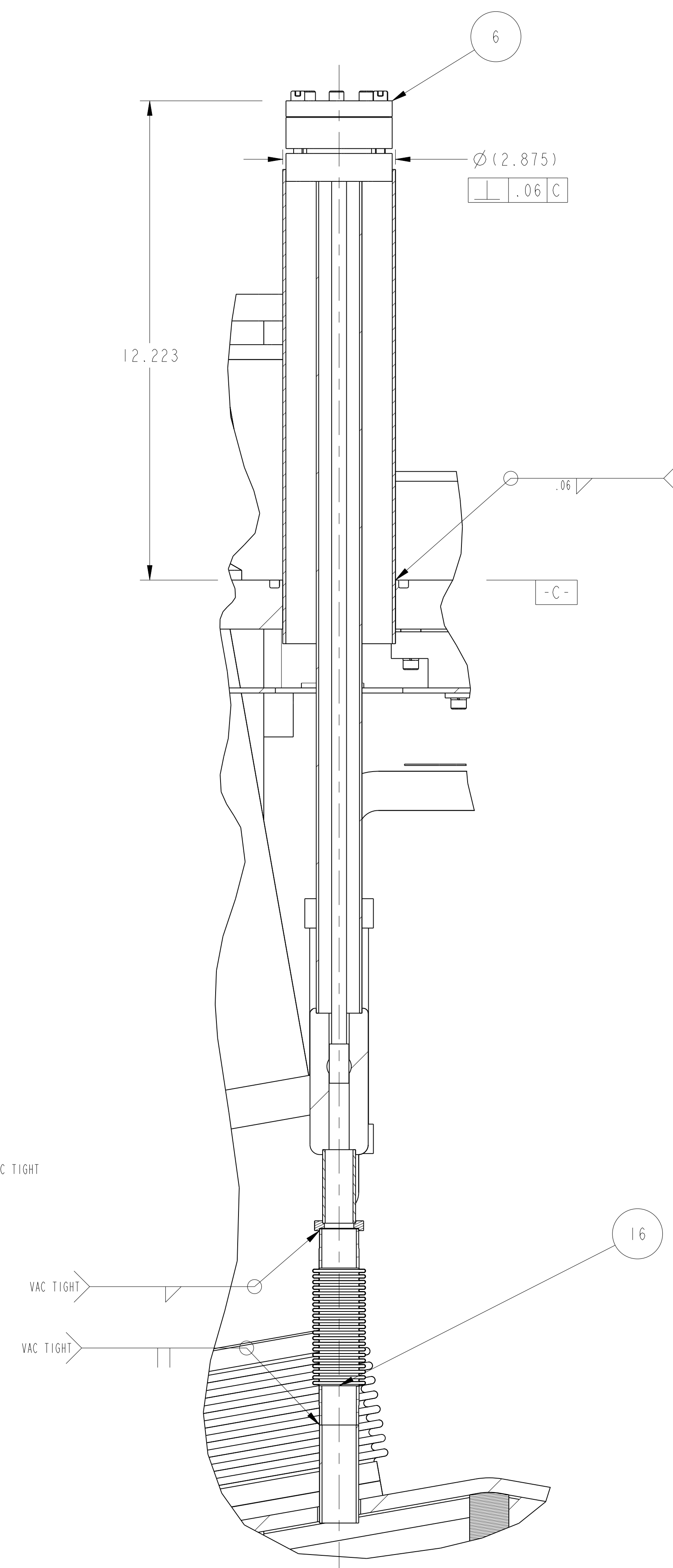
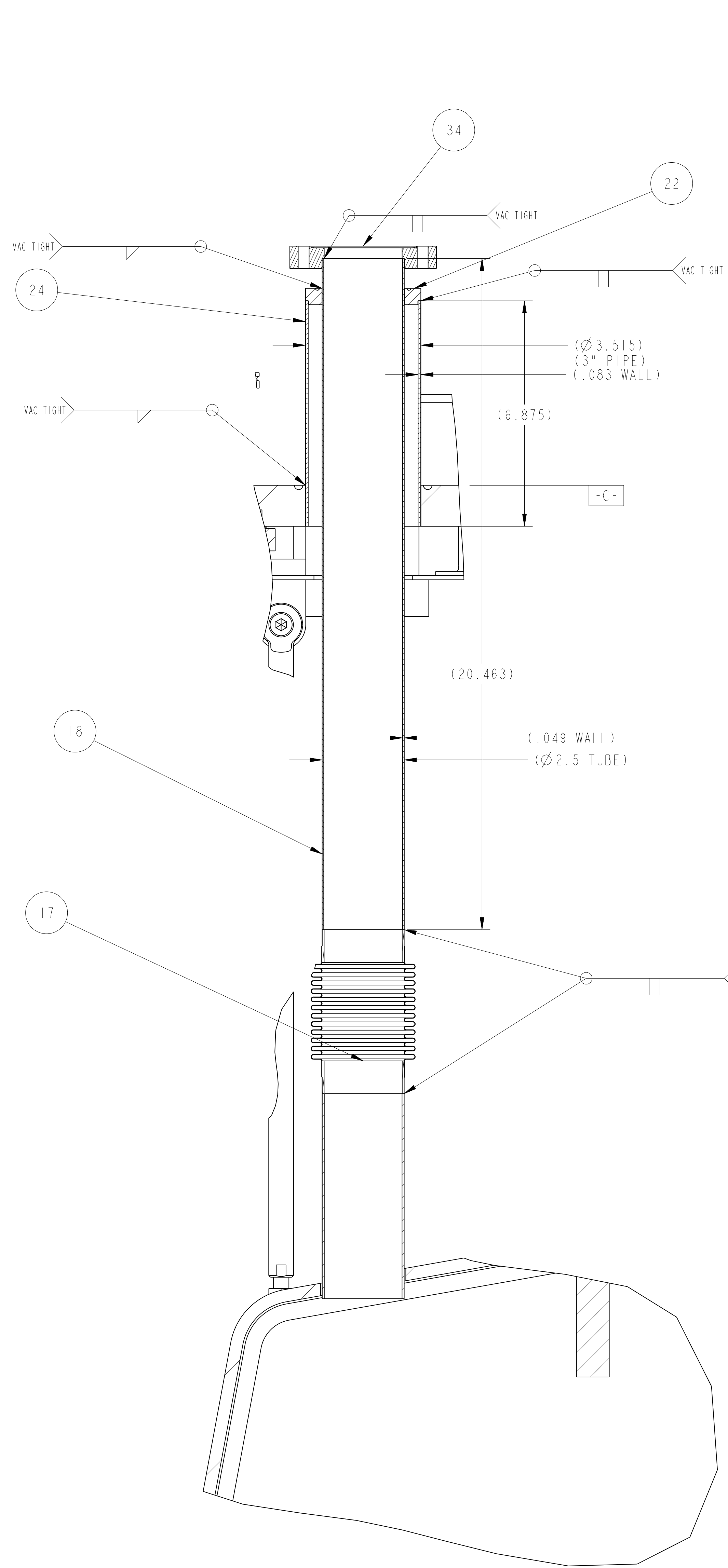
MICROFILMED:	DWG. TYPE:	SHOWN ON:	SCALE:	DO NOT SCALE PRINTS
	ASSEM	24C362	1/4	
PATENT CLEAR:	DESIGN ACCT. NO.	CATEGORY CODE:	DWG. NO.	REV.
	Z5LCE2	LH2001	2511446	4

SHEET 2 OF 4
 2511446 A





ERNEST ORLANDO LAWRENCE BERKELEY NATIONAL LABORATORY				UNIVERSITY OF CALIFORNIA - BERKELEY	
LHC IR FEEDBOX MAJOR ASSEMBLY TOP PLATE WELDMENT SUBASSY IP288 RIGHT					
MICROFILMED:	DWG. TYPE:	SHOW ON:	SCALE:	1/4	DO NOT SCALE PRINTS
	ASSEM	24C362			
PATENT CLEAR:	DESIGN ACCT. NO.	CATEGORY CODE	DWG. NO.	2511446	SIZE: REV. A
	Z5LCE2	LH2001			



ERNEST ORLANDO LAWRENCE		UNIVERSITY OF CALIFORNIA BERKELEY	
LHC IR FEEDBOX MAJOR ASSEMBLY			
TOP PLATE WELDMENT SUBASSY IP288 RIGHT			
MICROFILMED:	DWG. TYPE:	ASSEM	24C362
PATENT CLEAR:	DESIGN ACCT. NO:	Z5LCE2	LH2001
SCALE: 1/4		SHEET 4 OF 4	
DWG. NO.:		2511446	
REV.:		A	