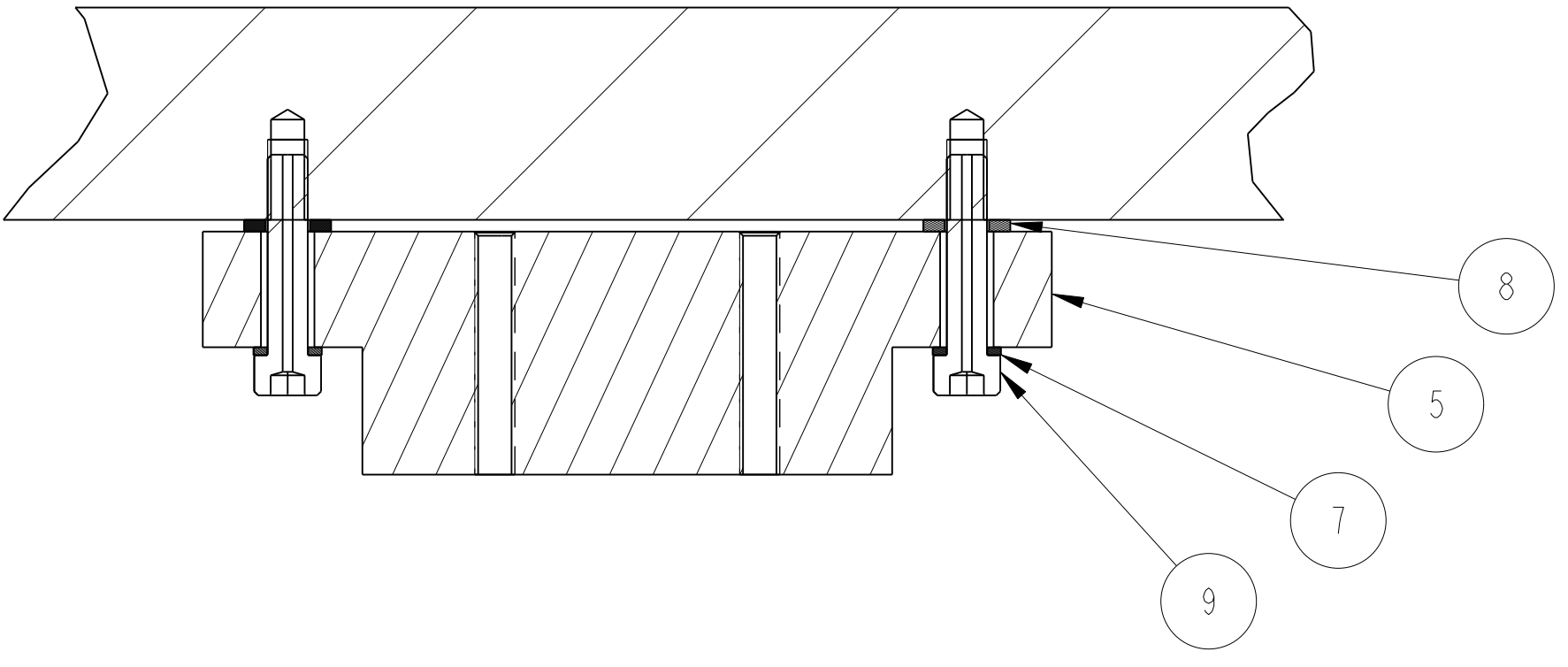
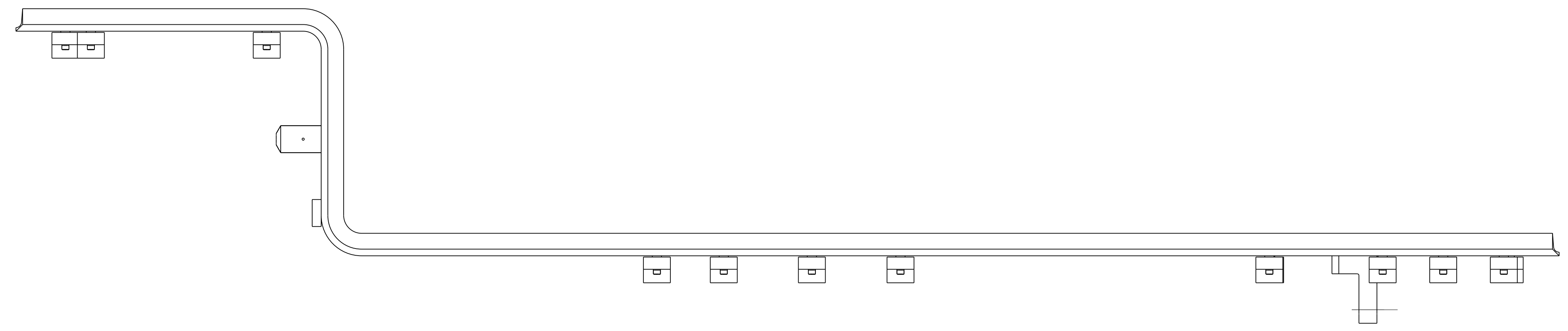
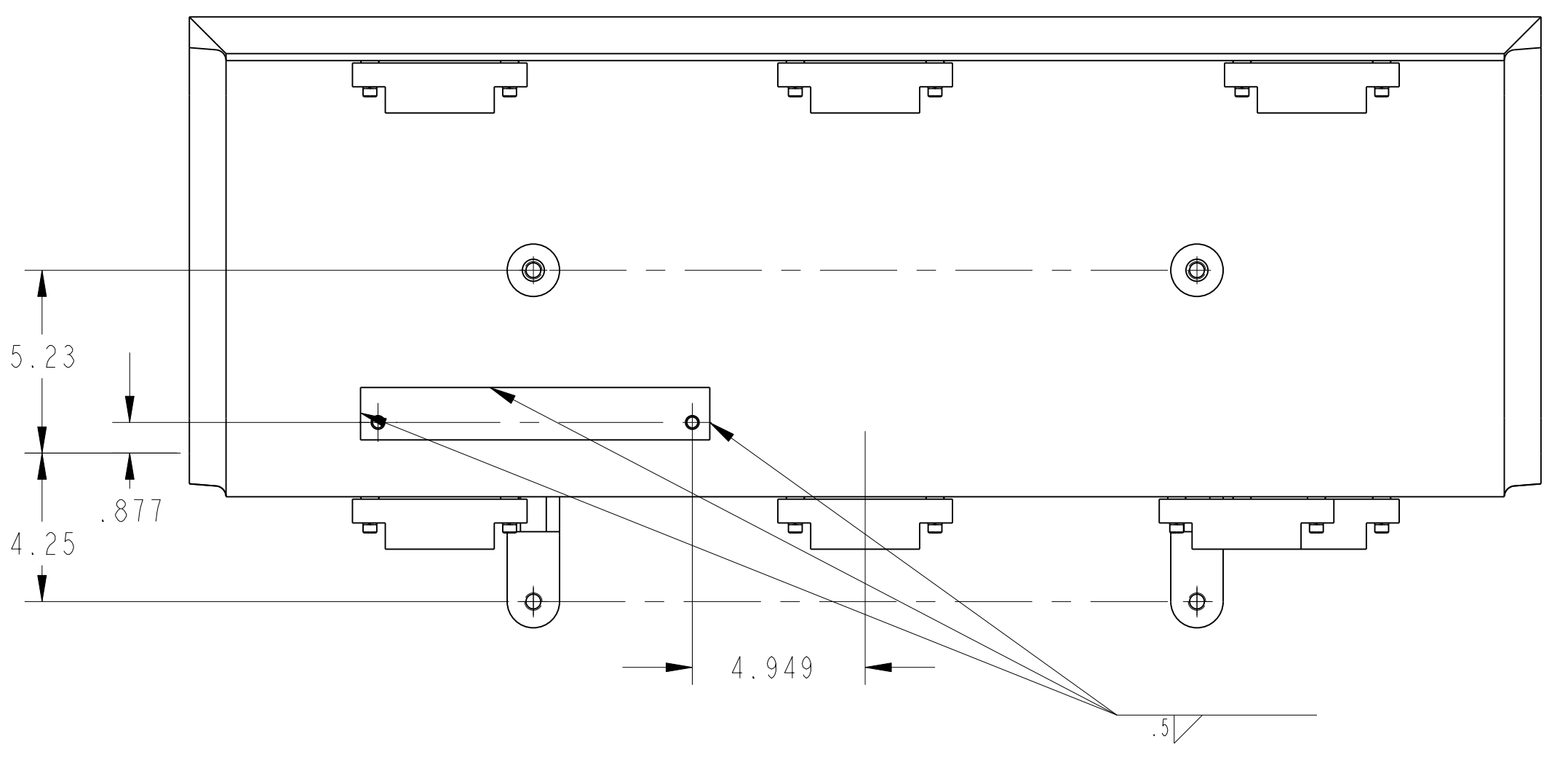
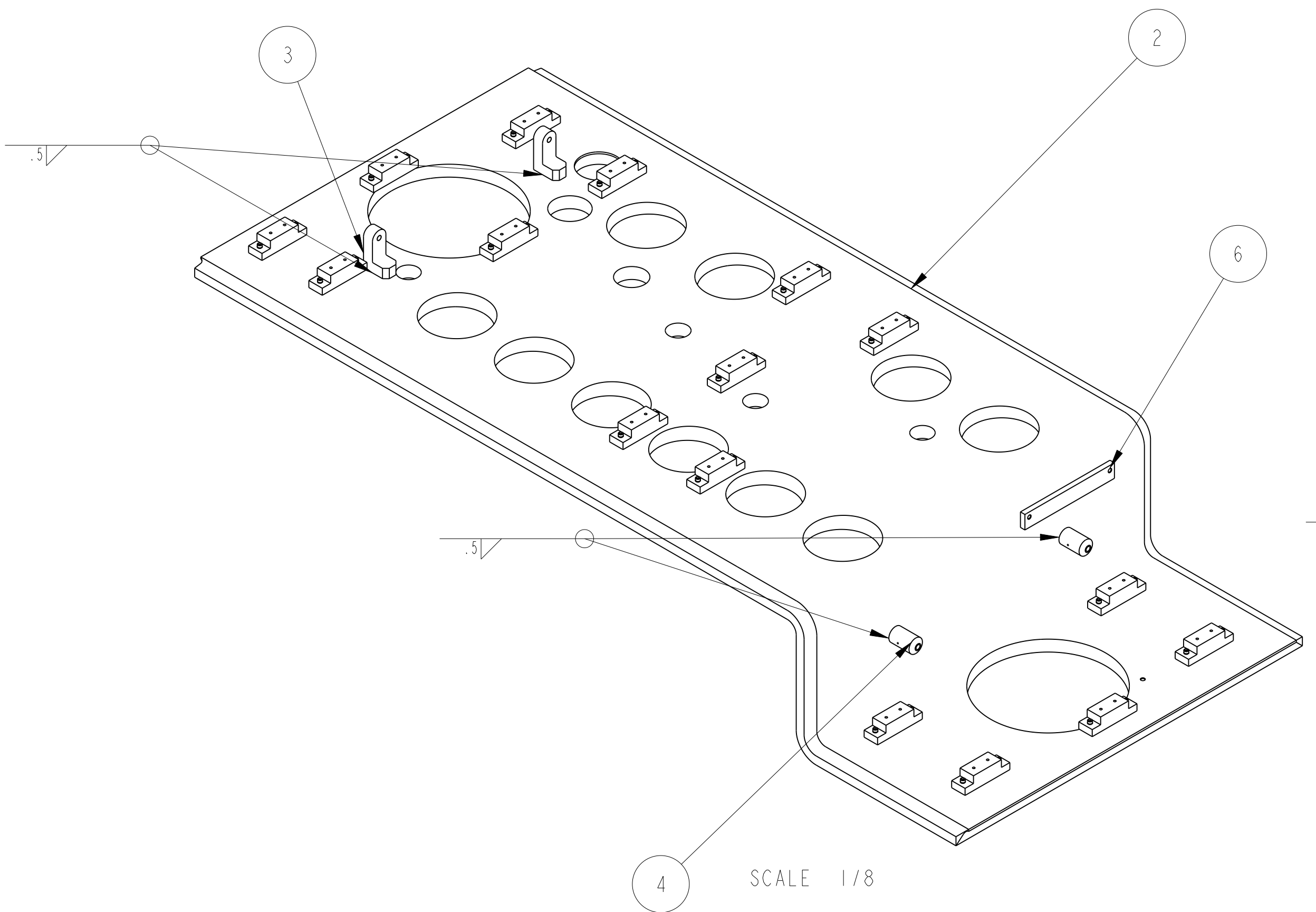


D

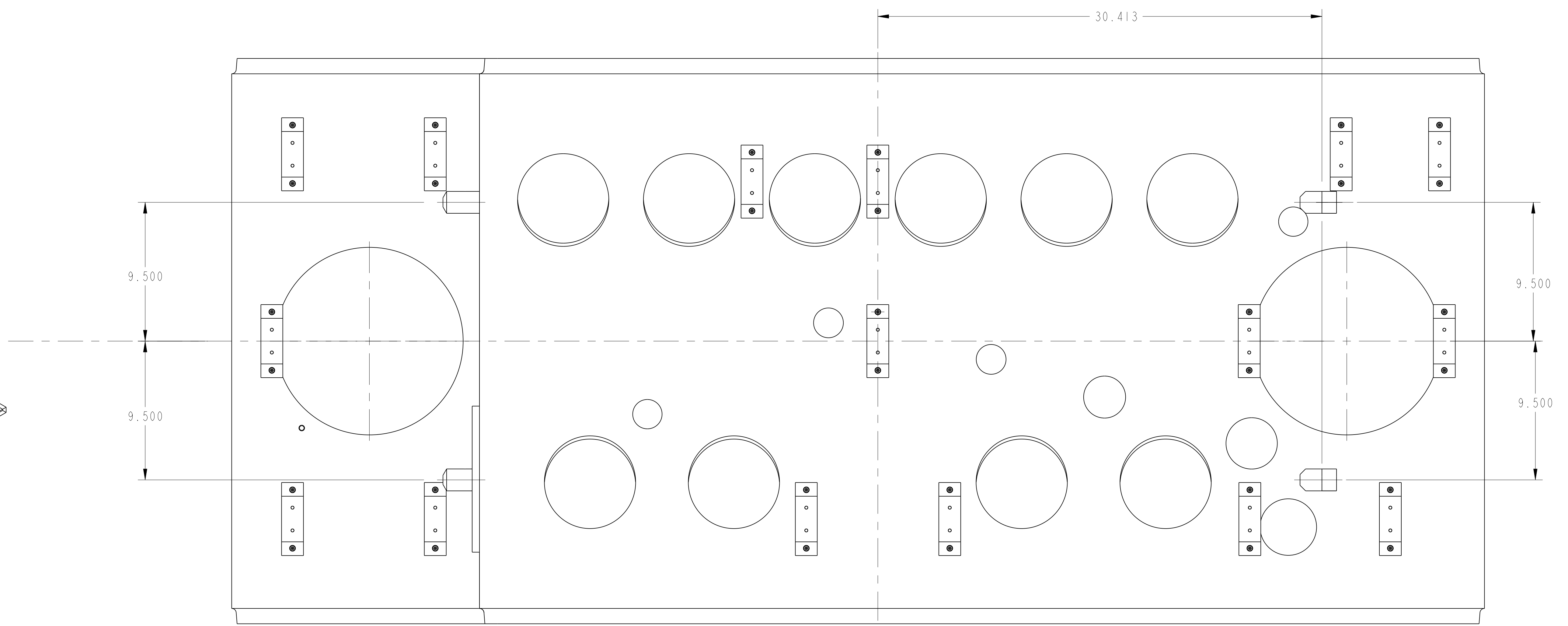


SECTION A-A
SCALE 1/1

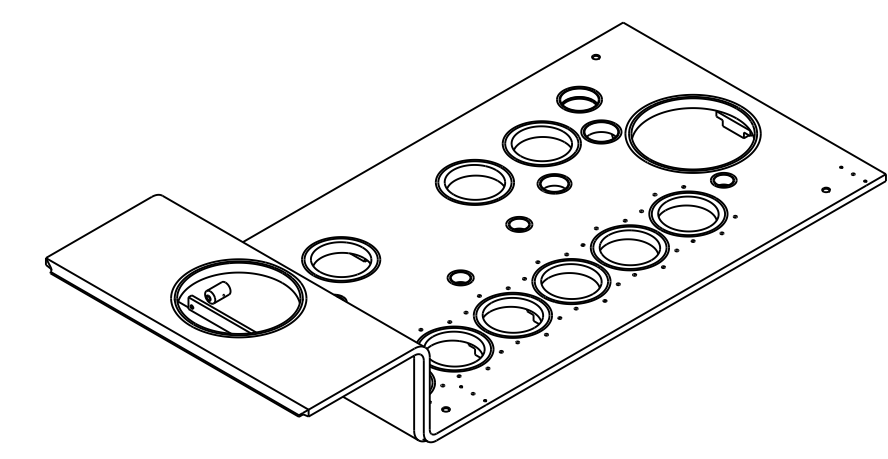
C



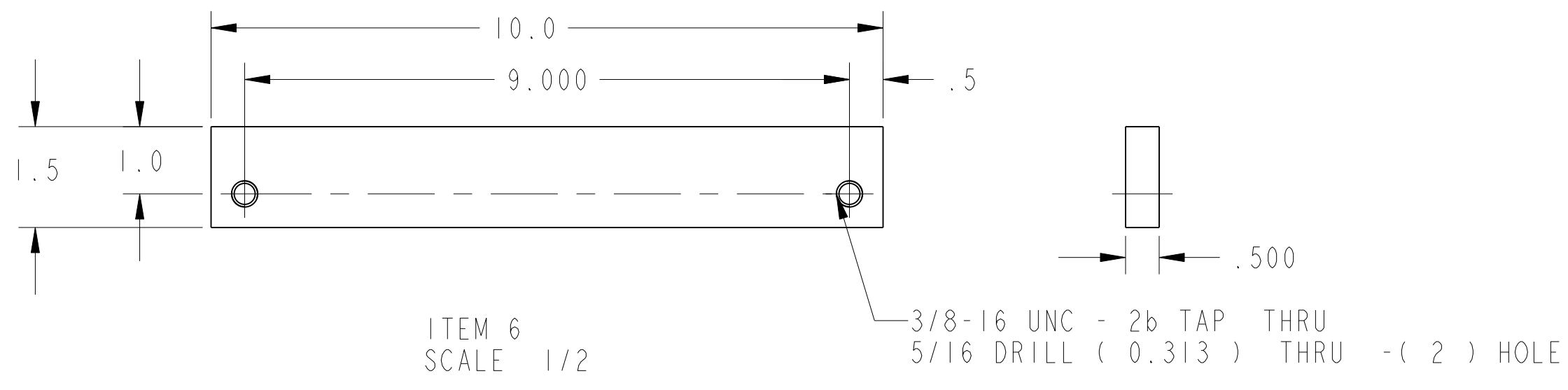
SCALE 1/8



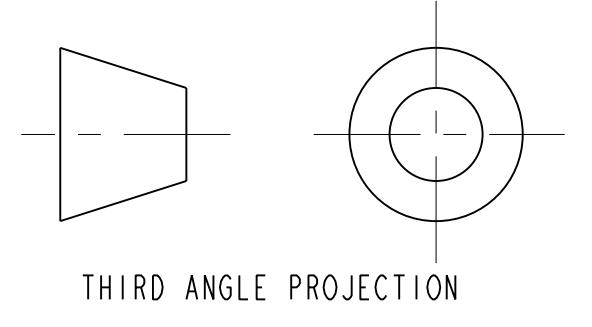
- NOTES: UNLESS OTHERWISE SPECIFIED,
 1. DIMENSIONS AND TOLERANCING PER ANSI Y14.5M-1982 UNITS ARE IN INCHES UNLESS OTHERWISE SPECIFIED.
 2. USE OF SULFUR OR SILICONE BEARING OILS, LUBRICANTS, OR COOLANTS ARE STRICTLY PROHIBITED
 3. USE OF RESIN OR RUBBER BONDED ABRASIVES UNDER POWER IS STRICTLY PROHIBITED. USE VITREOUS BONDED ABRASIVES ONLY.
 4. VENDOR WELD PROCEDURE SUBJECT TO LBNL APPROVAL.
 7. ESTIMATED WEIGHT = 1,130 LBS



SCALE 1/20



ITEM 6
SCALE 1/2



THIRD ANGLE PROJECTION

A

ITEM	PART NO.	RECD	DESCRIPTION	MATERIAL
8	-	32	SCH, MXTI, 30 LG, VENTED, SILVER PLATED	SS 18-8
8	-	32	WASHER, MG	SS
7	-	32	LOCK WASHER, MG	SS
6	-	1	XB THRUST PLATE	304L SS
5	251081	16	SPACER	NEMA G10
4	25M861	2	STRUT BOSS	304L SS
3	25M854	2	STRUT BRACKET	304L SS
2	251870	1	TOP PLATE DFBX D & H, IP2,8 RIGHT	304L SS
				VACUUM
				LHC IR FEEDBOX
				VACUUM
				TOP PLATE WELDMENT IP2,8 RIGHT
MICROFILMED:		DWG. TYPE:	ASSEM	SCALE: 1/4
DATE: 24-Aug-01		DESIGN ACCT. NO:	251144	DO NOT SCALE PRINT
DATE: 04-APR-02		PATENT CLEAR:	ZSLCE2	LH2002
DATE: 04-APR-02		DESIGN ACCT. NO:	251144	DATE: 04-APR-02
DATE: 04-APR-02		DESIGN ACCT. NO:	251144	DATE: 04-APR-02

REV	DWG	CHK	DATE	CHANGES
A	JDRDPO		10/7/02	INITIAL RELEASE

UNLESS OTHERWISE SPECIFIED	SHOP ORDERS	SCALE
TOLEANCES: X.X ± 0.1 FRACTION ± 1/64	NO. OF PARTS	1/4
X.XX ± 0.03 ANGLES ± 1.00°	DATE	1/4
X.XXX ± 0.010 FINISH $\sqrt{32}$	REVISION	1/4
THREADS ARE CLASS 2	DATE	1/4
DO NOT SCALE PRINT	DATE	1/4
CHAMFER ENDS OF ALL SCREW THREADS 30°	DATE	1/4
BREAK EDGES .015 MAX ON MACHINED WORK	DATE	1/4
REMOVE BURRS, WELD SPATTER A LOOSE SCALE	DATE	1/4
IN ACCORDANCE WITH ADP 114-5M 1 EAG. 1	DATE	1/4

ERNEST ORLANDO LAWRENCE
 UNIVERSITY OF CALIFORNIA - BERKELEY

SCALE: 1/4
 SHEET 1 OF 1
 DWG. NO. 2511366