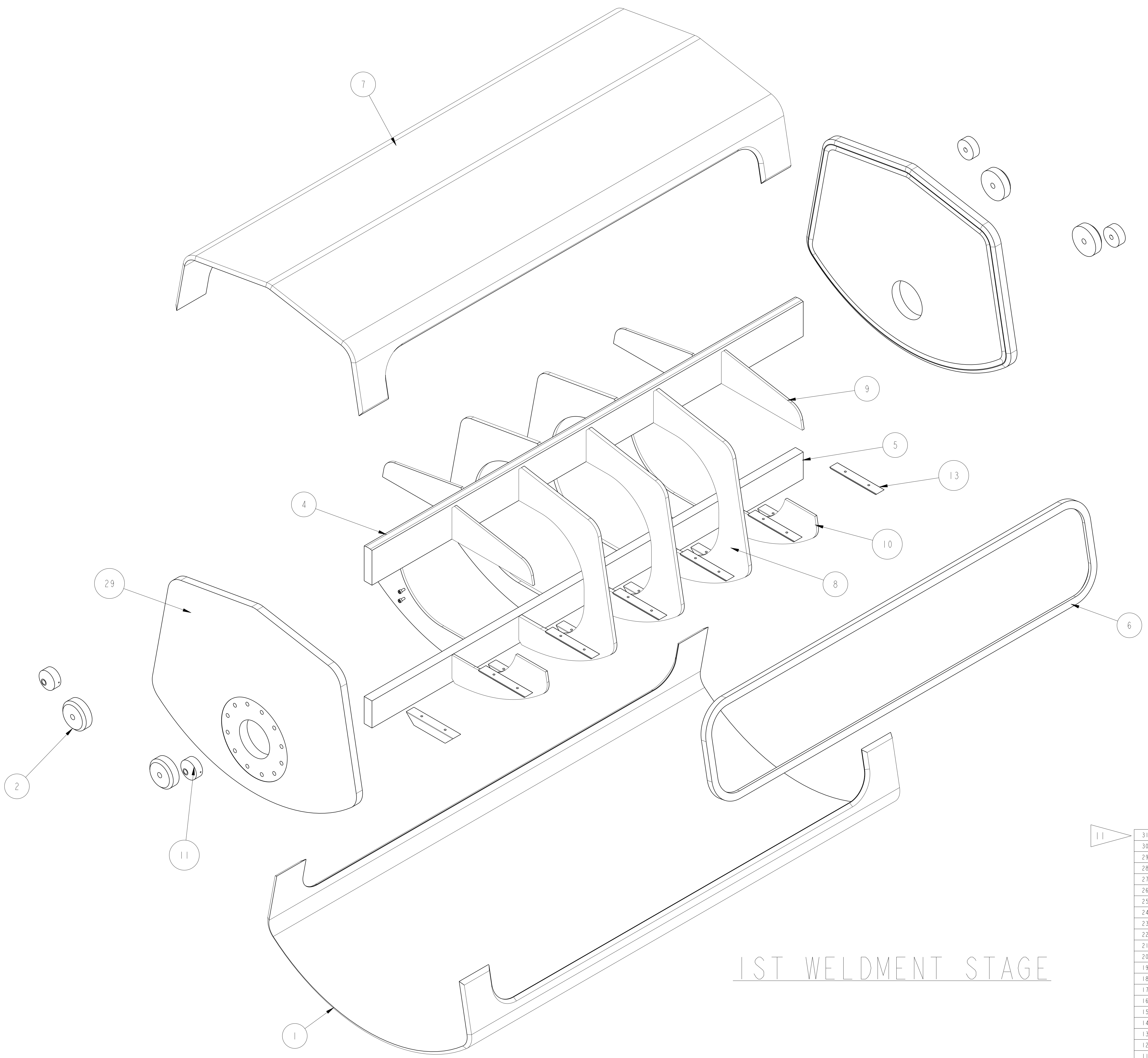


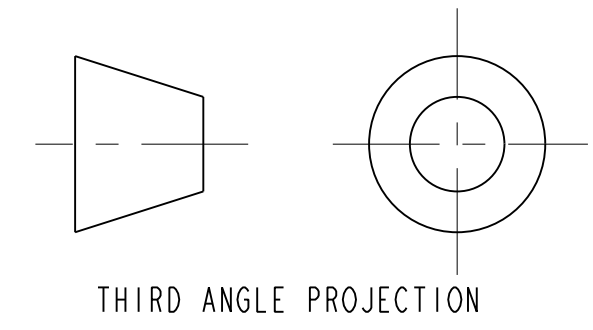
SCALE 1/10



1ST WELDMENT STAGE

NOTES: UNLESS OTHERWISE SPECIFIED,

1. DIMENSIONS AND TOLERANCING PER ANSI Y14.5M-1982 UNITS ARE IN INCHES UNLESS OTHERWISE SPECIFIED.
2. USE OF SULFUR OR SILICONE BEARING OILS, LUBRICANTS, OR COOLANTS ARE STRICTLY PROHIBITED.
3. USE OF RESIN OR RUBBER BONDED ABRASIVES UNDER POWER IS STRICTLY PROHIBITED. USE VITREOUS BONDED ABRASIVES ONLY.
4. CLEAN AFTER MACHINING PER VENDOR SPECIFICATION; SUBJECT TO LBNL APPROVAL.
5. VENDOR SUGGESTED CHANGES TO WELD PREPS; SUBJECT TO LBNL APPROVAL.
6. PROTECT FINISHED PART BY BAGGING OR SIMILAR METHOD TO PROTECT AND MAINTAIN CLEANLINESS DURING SHIPMENT AND STORAGE.
7. VENDOR SUGGESTED CHANGES TO TOLERANCES TO FACILITATE ASSEMBLY; SUBJECT TO LBNL APPROVAL.
8. OPERATING CONDITIONS, 4.2k, 70 psig (4.4bar) TEST PRESSURE.
9. ESTIMATED WEIGHT: 768 LBS.
10. TACK WELD APPROPRIATE WELD BACKING STRIPS AROUND ENTIRE PERIMETER OF VESSEL OPENING. COVER SHOWN IN DRAWING 25M8026 WILL BE WELDED INTO OPENING DURING A LATER STEP PER DRAWING 24C3526.
11. TOOLING ITEM NOT SHOWN



REV	DATE	BY	CHK	ZONE	DESCRIPTION
B	10-8-02	MJK	DPO		UPDATED VIEWS AND GEOMETRY
A	10-4-02	RLM	DPO		INITIAL RELEASE
I	8-26-02	RLM	SPV		GENERAL PRESSURE VESSEL COMPLIANCE CHANGES
					CHANGES

TOLERANCES	UNLESS OTHERWISE SPECIFIED
X.X ± 0.1	FRAC. ± 1/64
X.XX ± 0.03	Angles ± 1.00°
X.XXX ± 0.010	FINISH $\sqrt{32}$

ITEM	PART NO	REQD	DESCRIPTION	MATERIAL
31	251667	1	PUSH BLOCK	ALUM 6061
30	25M813	2	CLAMP COVER 1"	OFHC, C101
29	251115	2	LIQUID HELIUM TANK, END PLATE (1 PORT)	304L SS
28	-	8	SCH. MSX 8, 12LG, SILVER PLATED	SS 19-8
27	-	8	LOCK WASHER, MS	SS
26	251110	10	LIQUID HELIUM TANK, WELDMENT RING	304L SS
25	-	2	COPPER BRAID, 1" X 1/8"	-
24	251900	2	TANK SUPPORT BRACKET	SS 304L
23	251909	1	LIQUID HELIUM PORT STUB	304L SS
22	251908	1	CHECK VALVE STUD	304L SS
21	251907	1	RELIEF PORT PIPE STUB	304L SS
20	251899	2	PIPING SUPPORT PAD	SS 304L
19	251681	1	CABLE LOOM BASE-B ASSEMBLY	-
18	251451	2	HTS SOLDER JOINT ASSEMBLY-8A	-
17	251688	2	CABLE LOOM BASE ASSEMBLY	-
16	251685	2	HTS SOLDER JOINT ASSEMBLY-10	-
15	251689	2	HTS SOLDER JOINT ASSEMBLY-8	-
14	251689	3	CABLE LOOM BASE-A ASSEMBLY	-
13	251665	12	SOLDER BOX GUSSET	SS
12	25M900	2	CLAMP BASE PLATE	CDA 101
11	25M860	4	TANK SUPPORT BOSS	304L SS
10	251109	4	LIQUID HELIUM TANK, HALF RIB, LOWER	304L SS
9	251108	4	LIQUID HELIUM TANK, UPPER HALF RIB	SS 304L
8	251107	5	LIQUID HELIUM TANK, FULL RIB	SS 304L
7	251105	1	LIQUID HELIUM TANK, UPPER SHELL	304L SS
6	251104	1	LIQUID HELIUM TANK, PORT FRAME	SS 304L
5	251103	1	LIQUID HELIUM TANK, HORIZONTAL LOWER RIB	SS 304L
4	251102	1	LIQUID HELIUM TANK, HORIZONTAL UPPER RIB	SS 304L
2	251898	4	LIFTING PAD	SS 304L
1	251106	1	LIQUID HELIUM TANK, LOWER SHELL	304L SS

**SHOP ORDERS**

ERNEST ORLANDO LAWRENCE  
BERKELEY NATIONAL LABORATORY  
UNIVERSITY OF CALIFORNIA - BERKELEY

LHC IR FEEDBOX  
CRYOGENICS  
LIQUID HELIUM TANK - 10 PORT

SCALE: 1/4

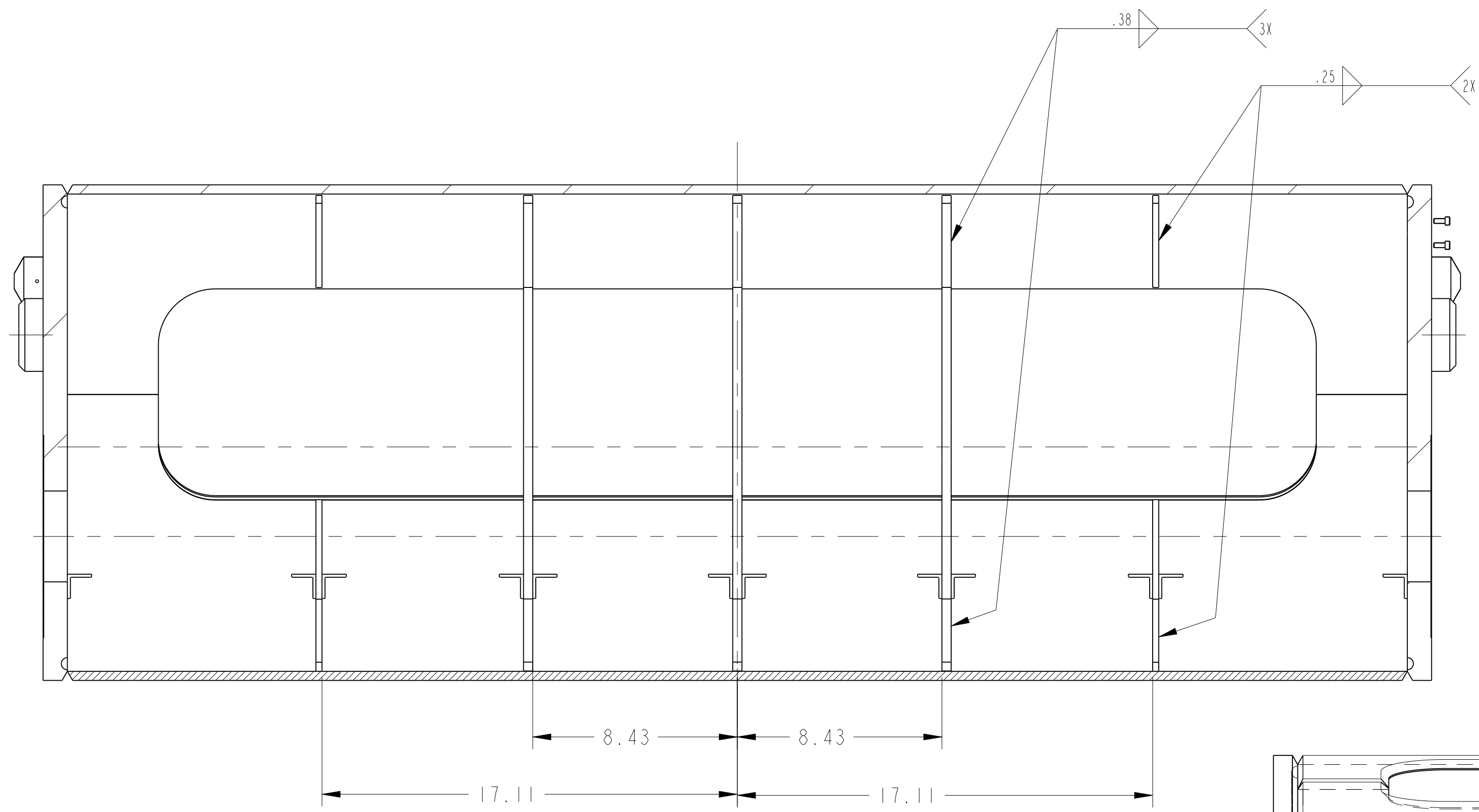
SHEET 1 OF 4

REV. NO. 4

251116

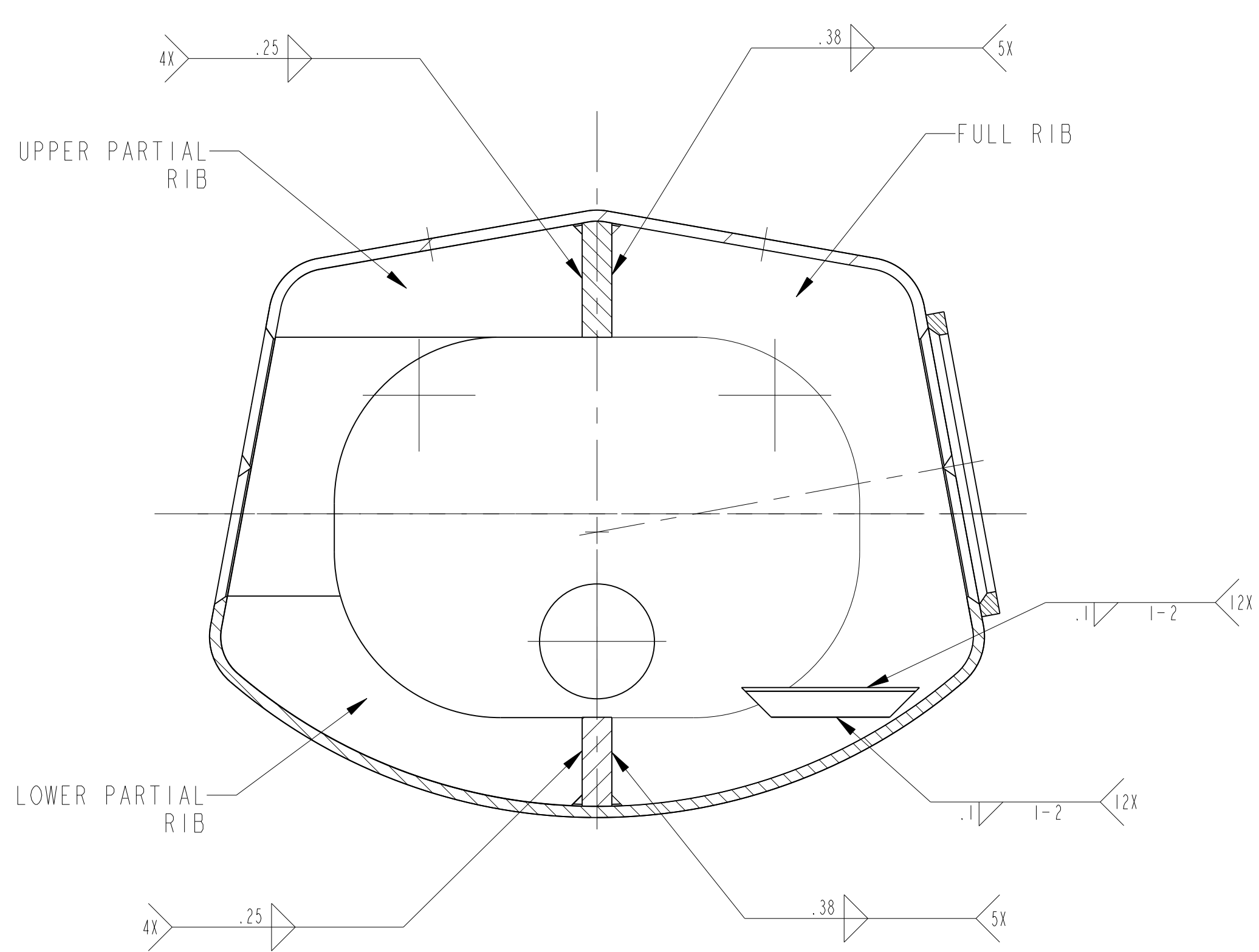
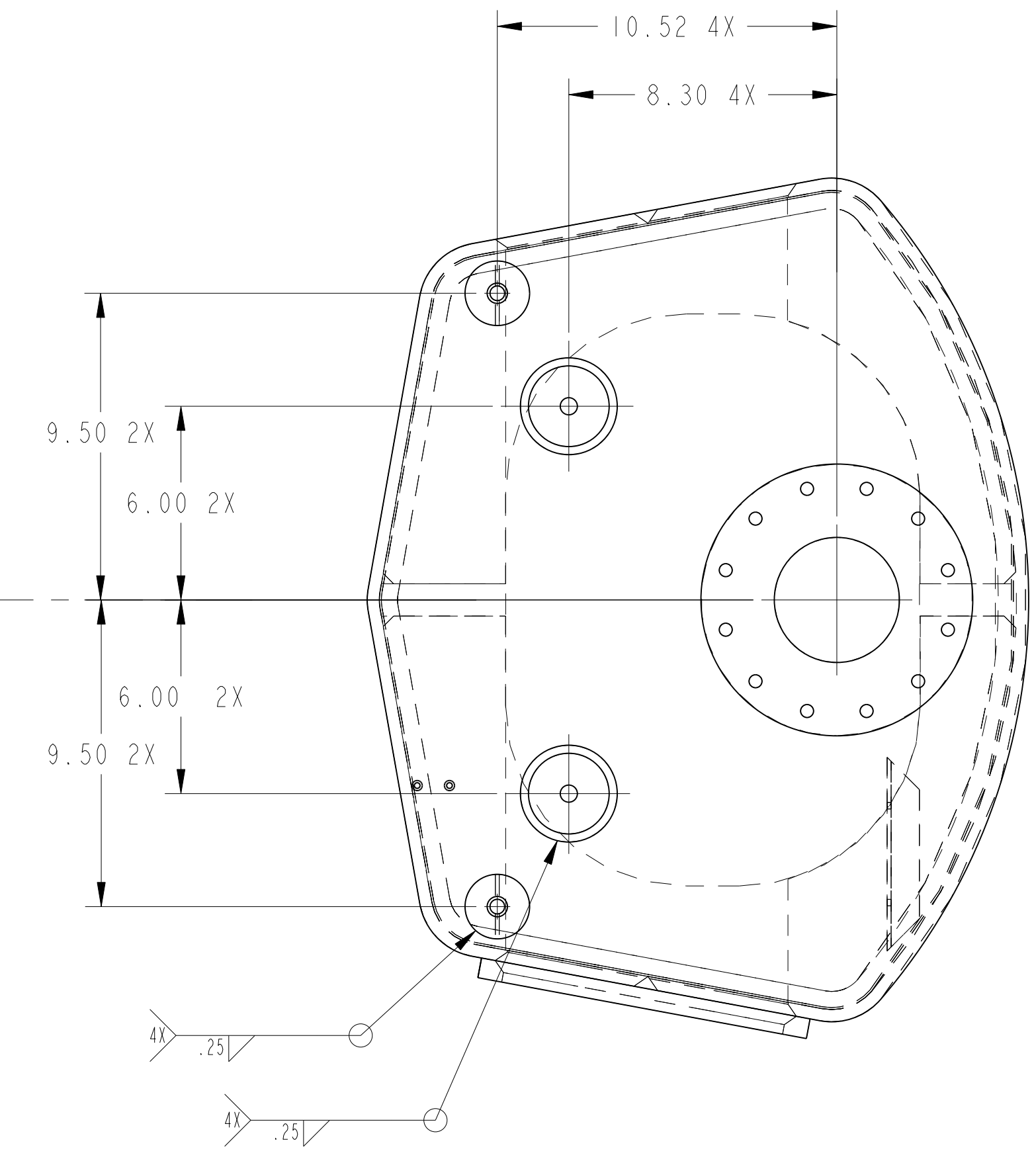
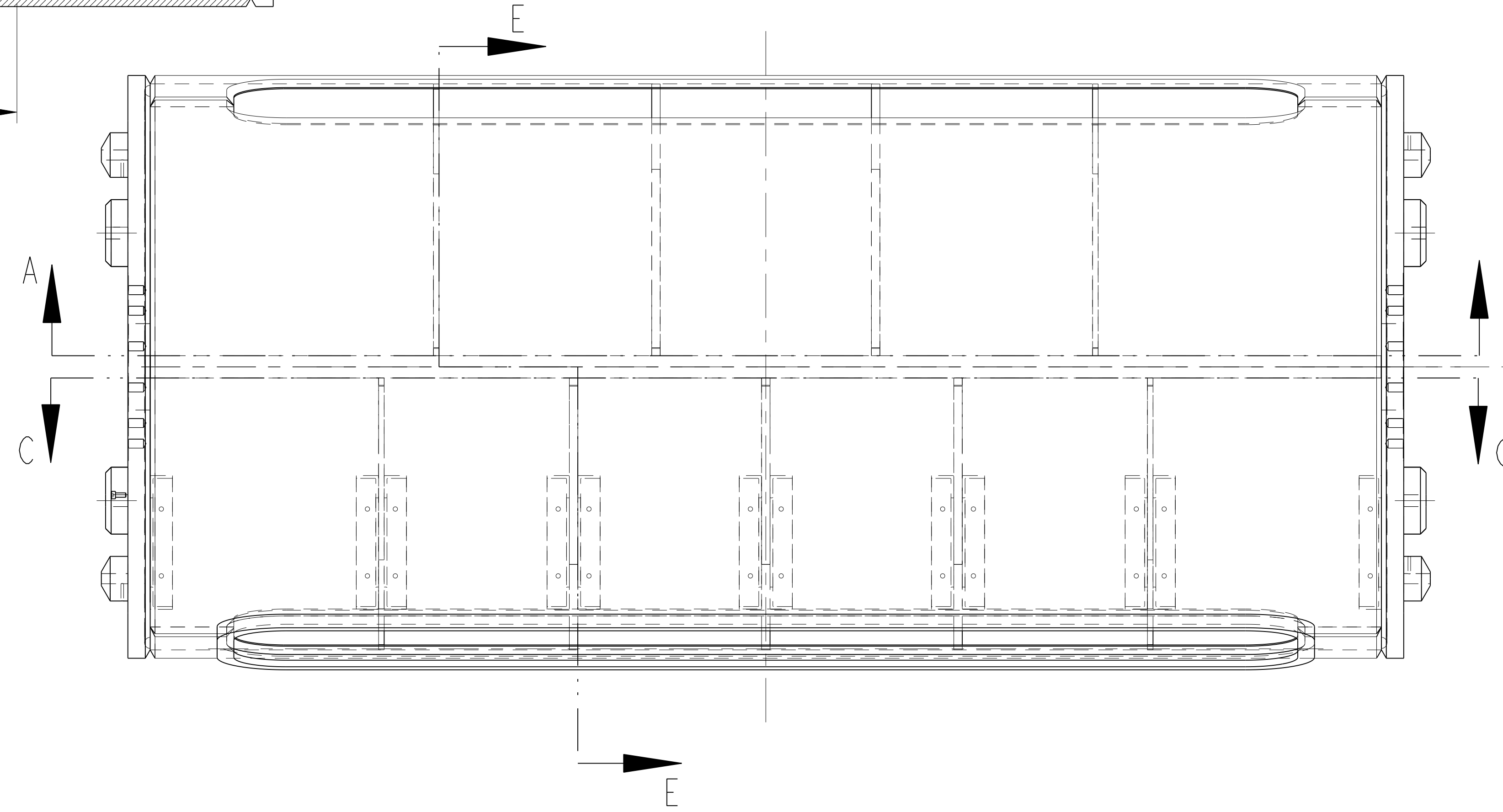
NAME: ARHARRIS DATE: 04-Dec-02 10:36:51

SCALE: 1/4 SHEET 1 OF 4 REV. NO. 4 251116

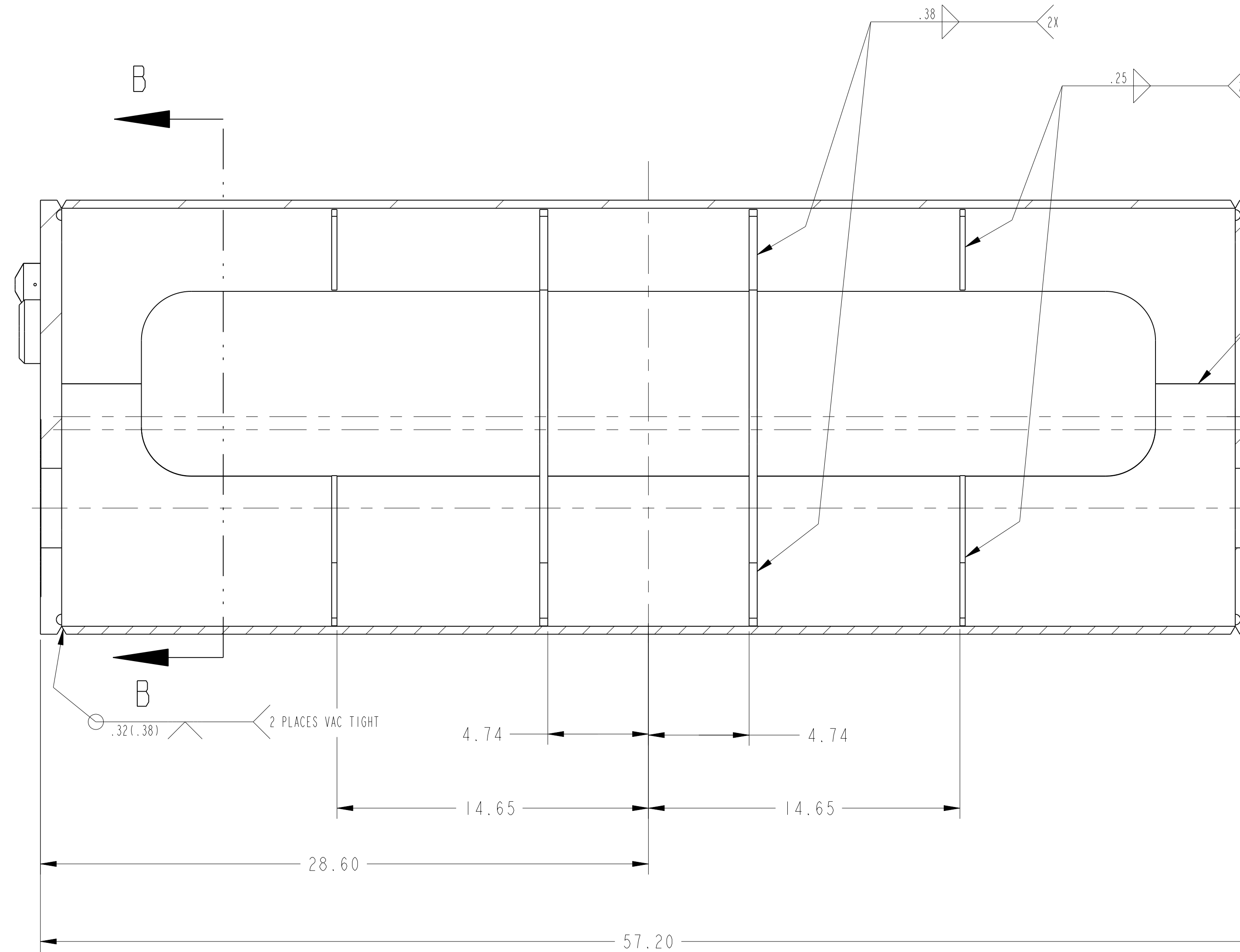


1ST WELDMENT STAGE

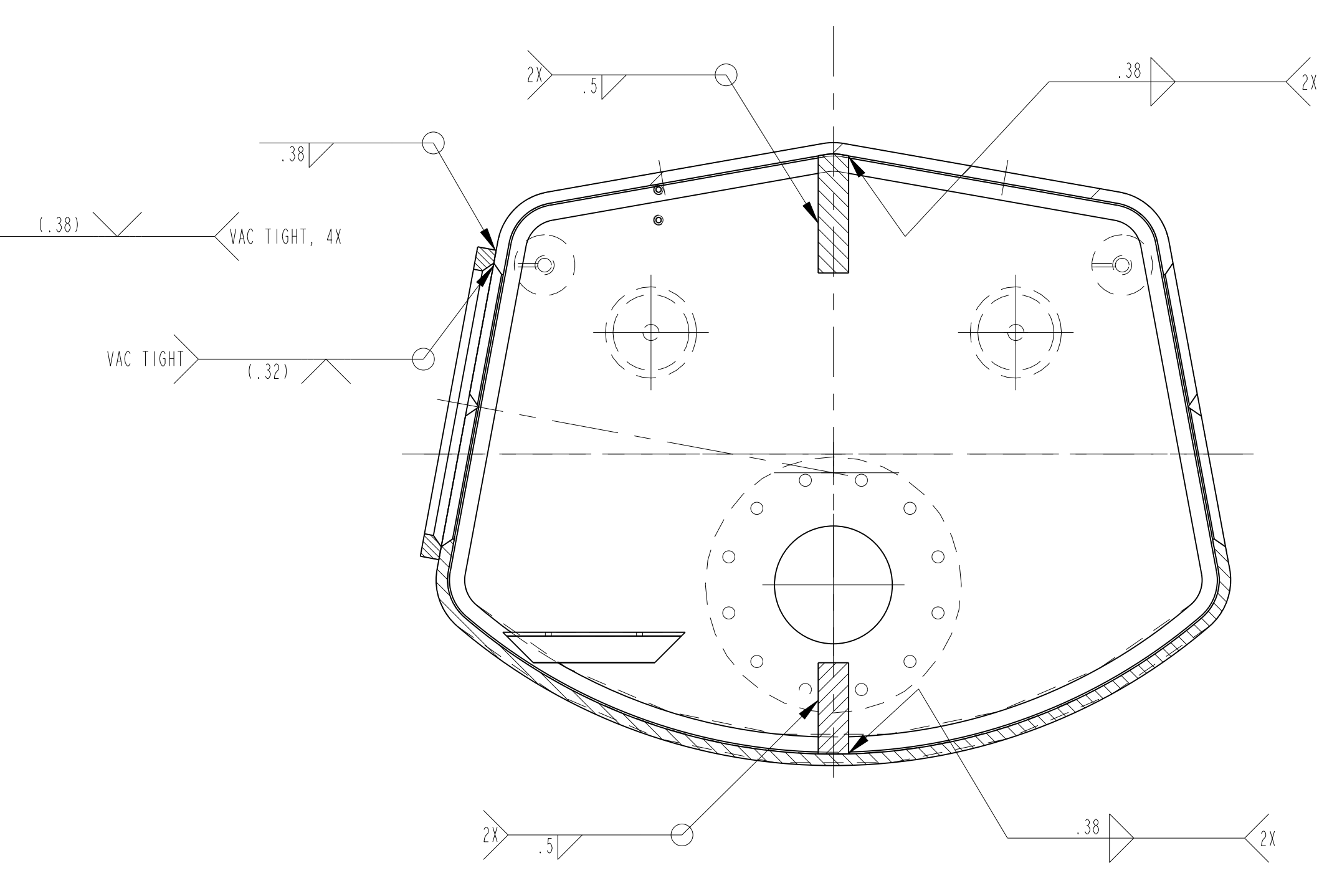
SECTION C-C  
SCALE 1/4  
VIEW ROTATED 180°



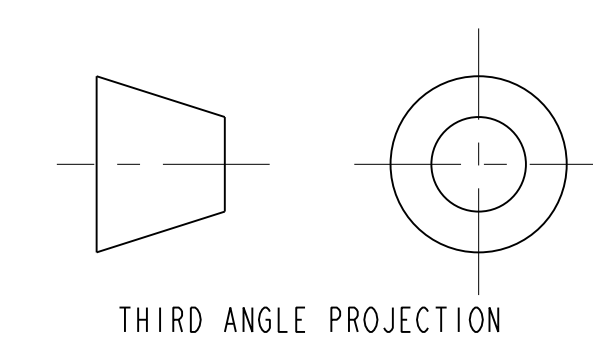
SECTION E-E



SECTION A-A

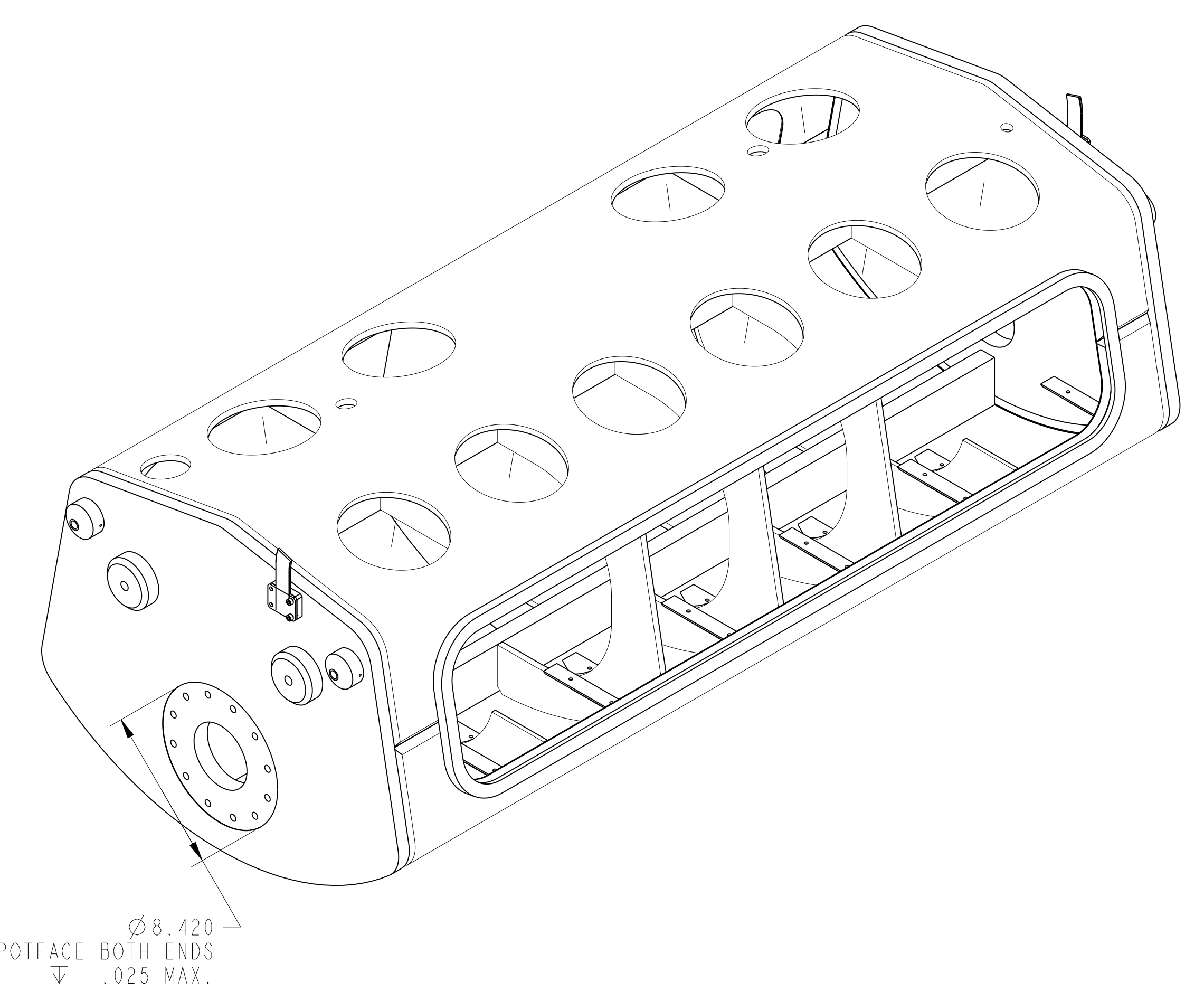
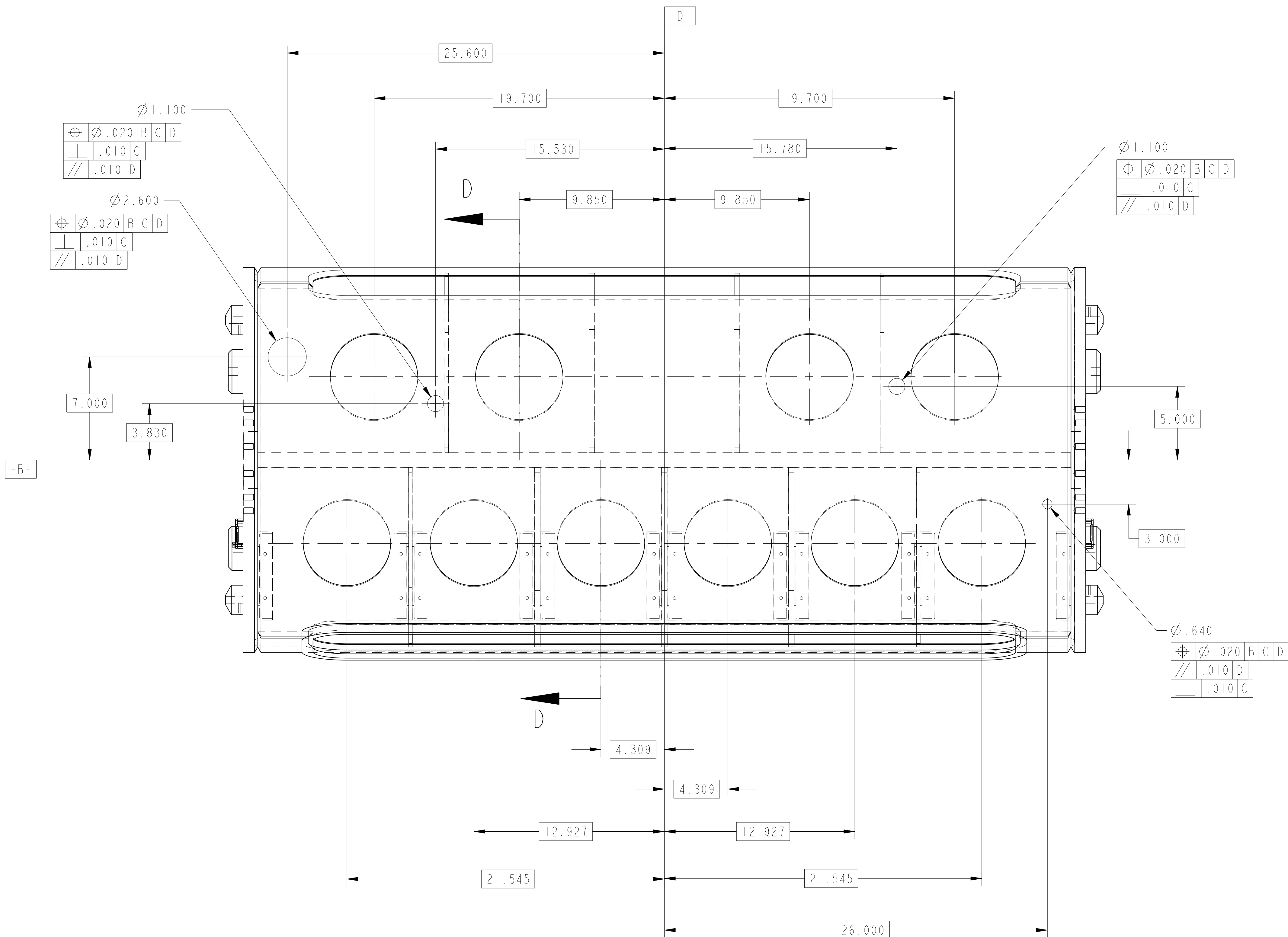


SECTION B-B

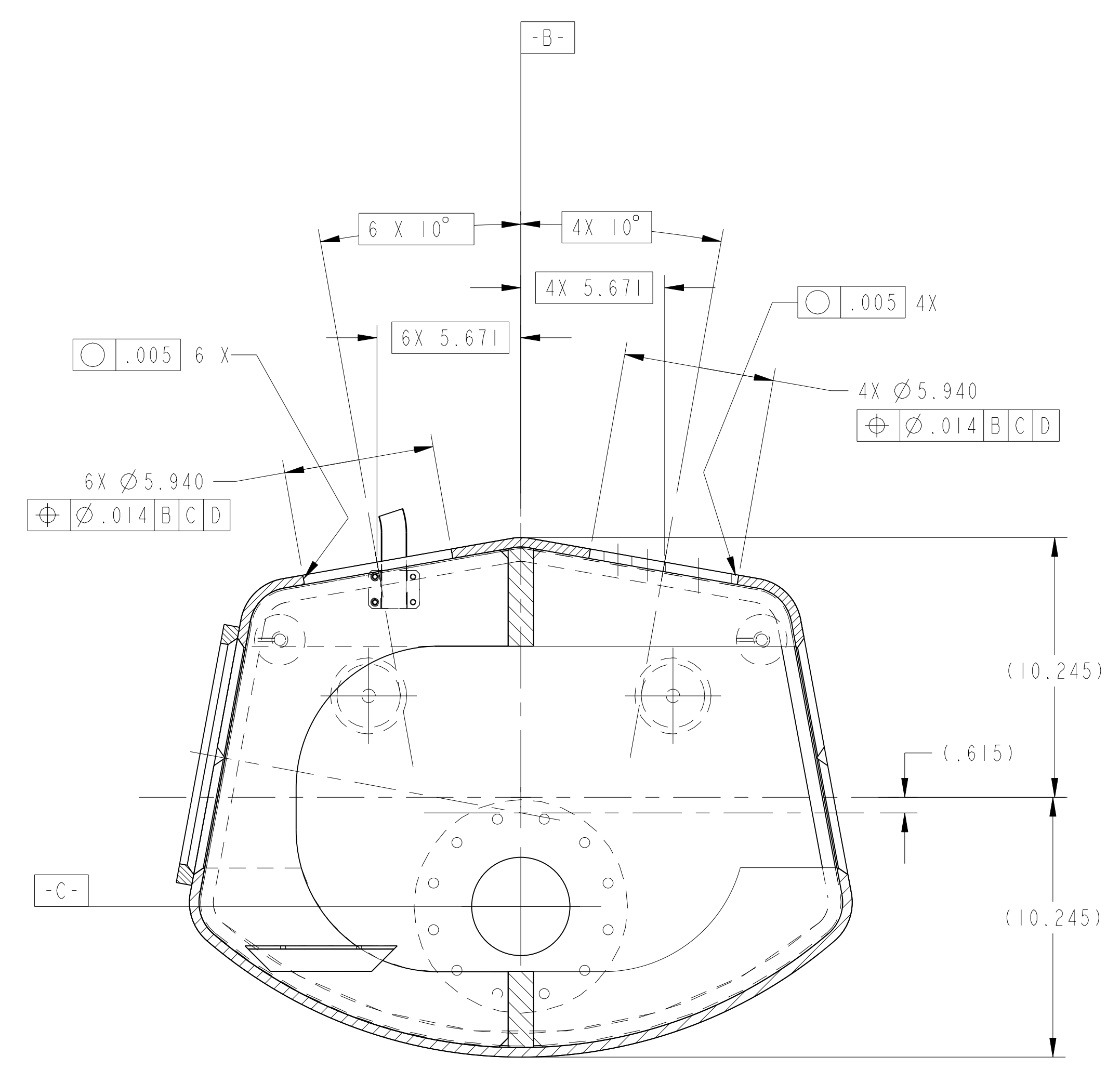
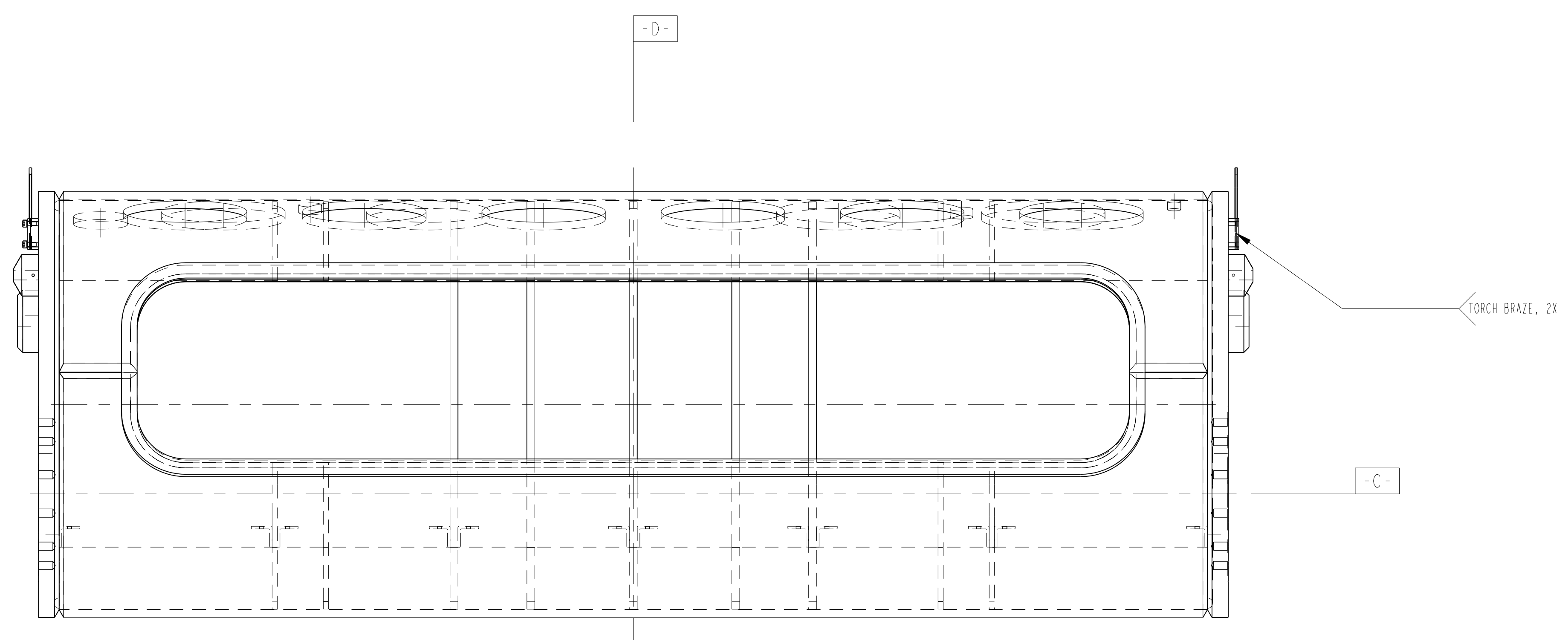


THIRD ANGLE PROJECTION

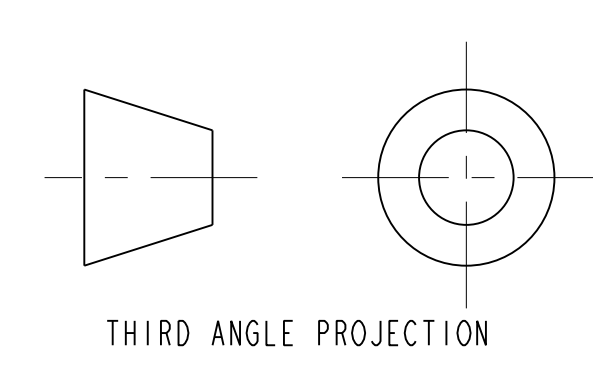
<b>ERNEST ORLANDO LAWRENCE</b> <b>BERKELEY NATIONAL LABORATORY</b> UNIVERSITY OF CALIFORNIA - BERKELEY			
LHC IR FEEDBOX CRYOGENICS LIQUID HELIUM TANK - 10 PORT			
MICROFILMED:	DWG. TYPE:	SCALE:	DOC. NO.:
	ASSEM	1/4	SCALE PRINTS
PATENT CLEAR:	DESIGN ACES. NO.:	CATEGORY CODE:	DWG. NO.:
	Z5LCE2	LH2003	251116
SHEET 2 OF 4			REV.:
			B



MACHINED STAGE



SECTION D-D

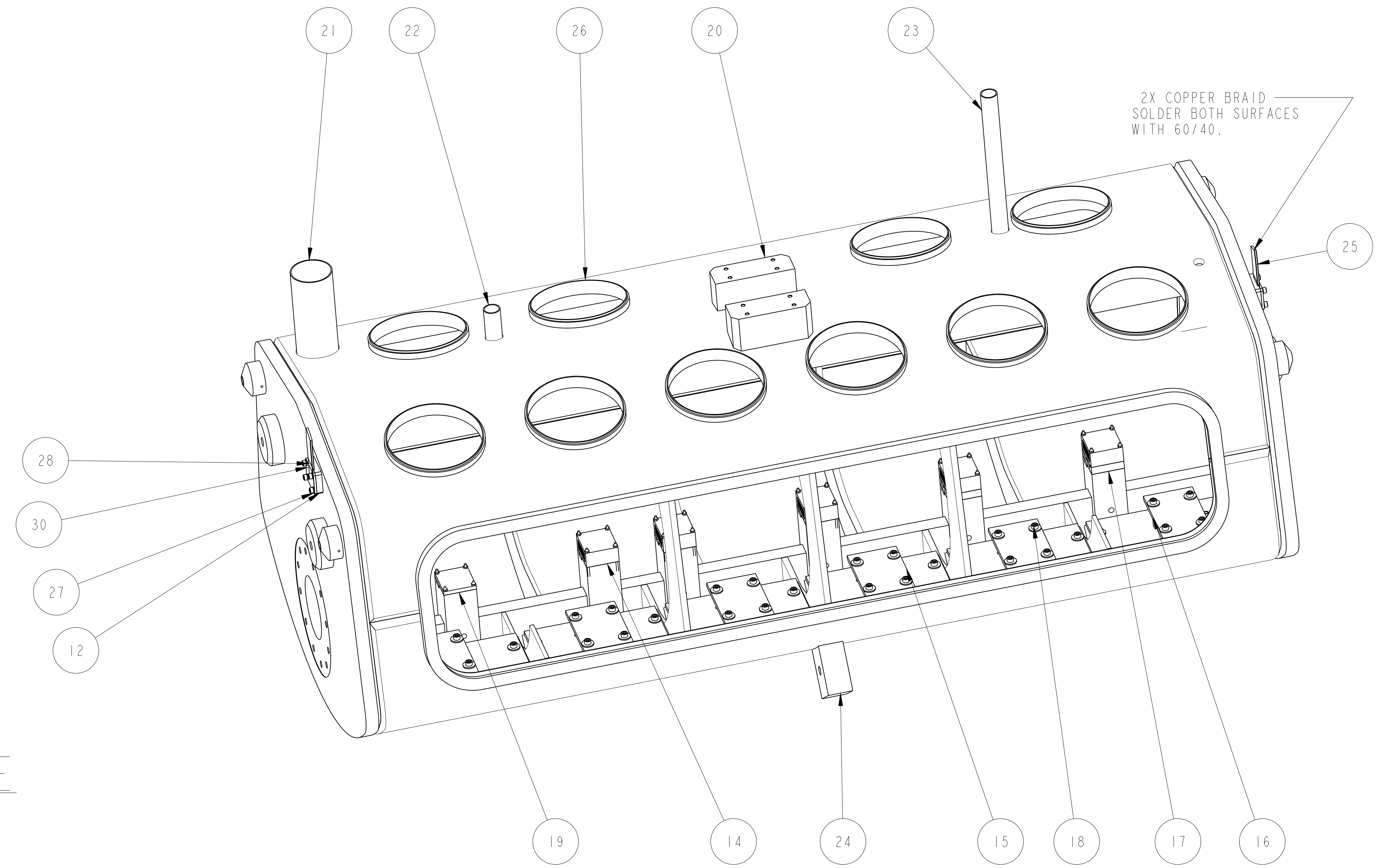
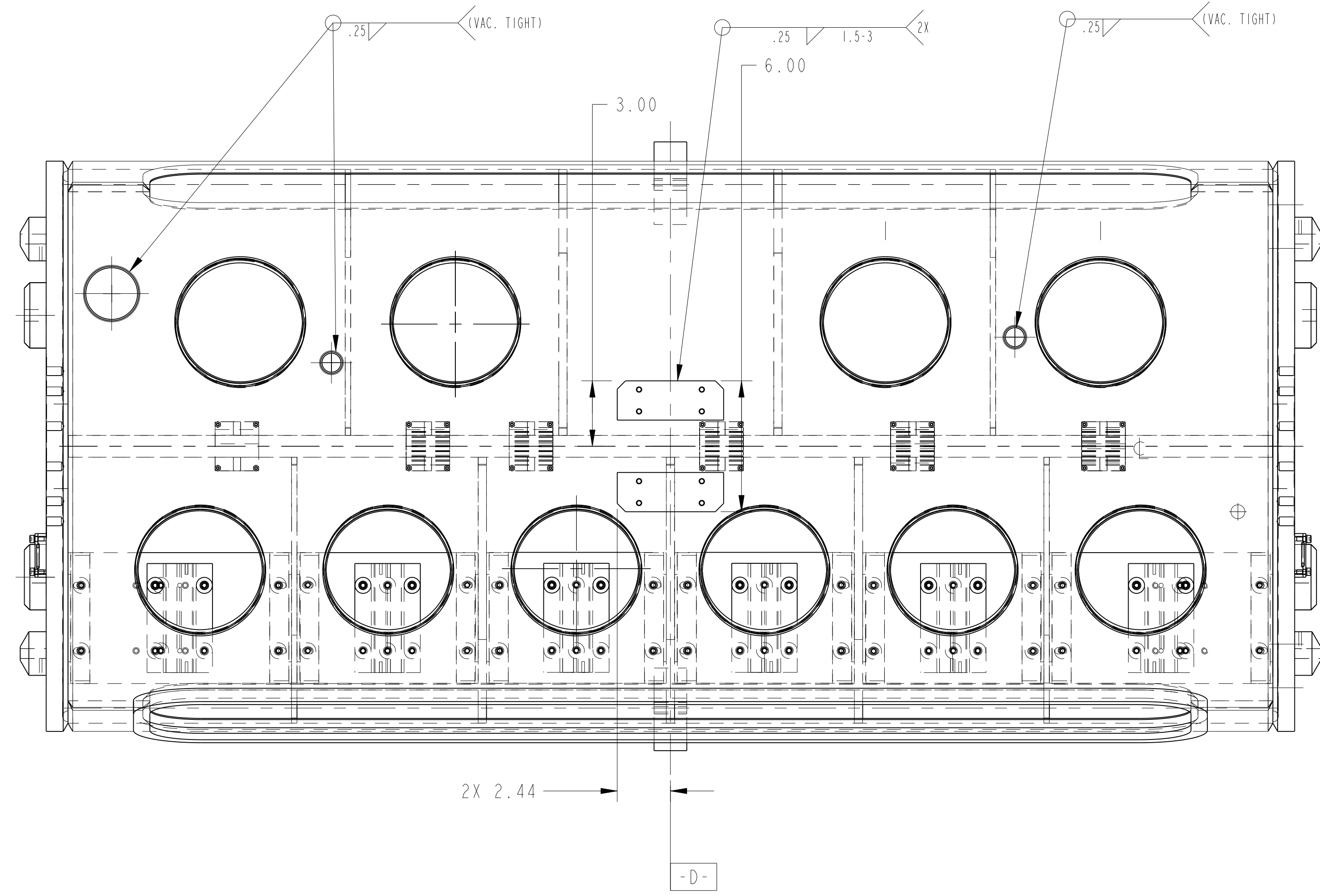


ERNEST ORLANDO LAWRENCE BERKELEY NATIONAL LABORATORY UNIVERSITY OF CALIFORNIA - BERKELEY			
LHC IR FEEDBOX CRYOGENICS			
LIQUID HELIUM TANK - 10 PORT			
MICROFILMED:	DWG. TYPE:	SCALE:	DWG. NO.:
	ASSEM	1/4	251116
PATENT CLEAR:	DESIGN ACES. NO.:	CATEGORY CODE:	REV.:
	Z5LCE2	LH2003	3 OF 4
SHEET 3 OF 4			SIZE:
251116			B

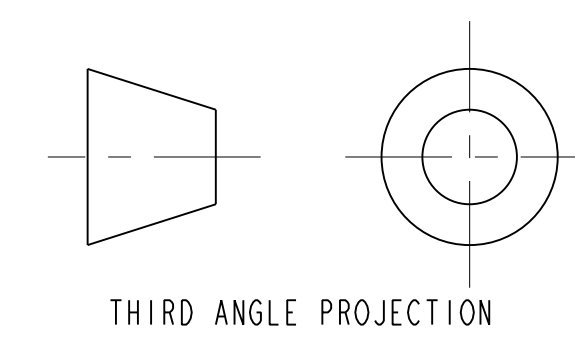
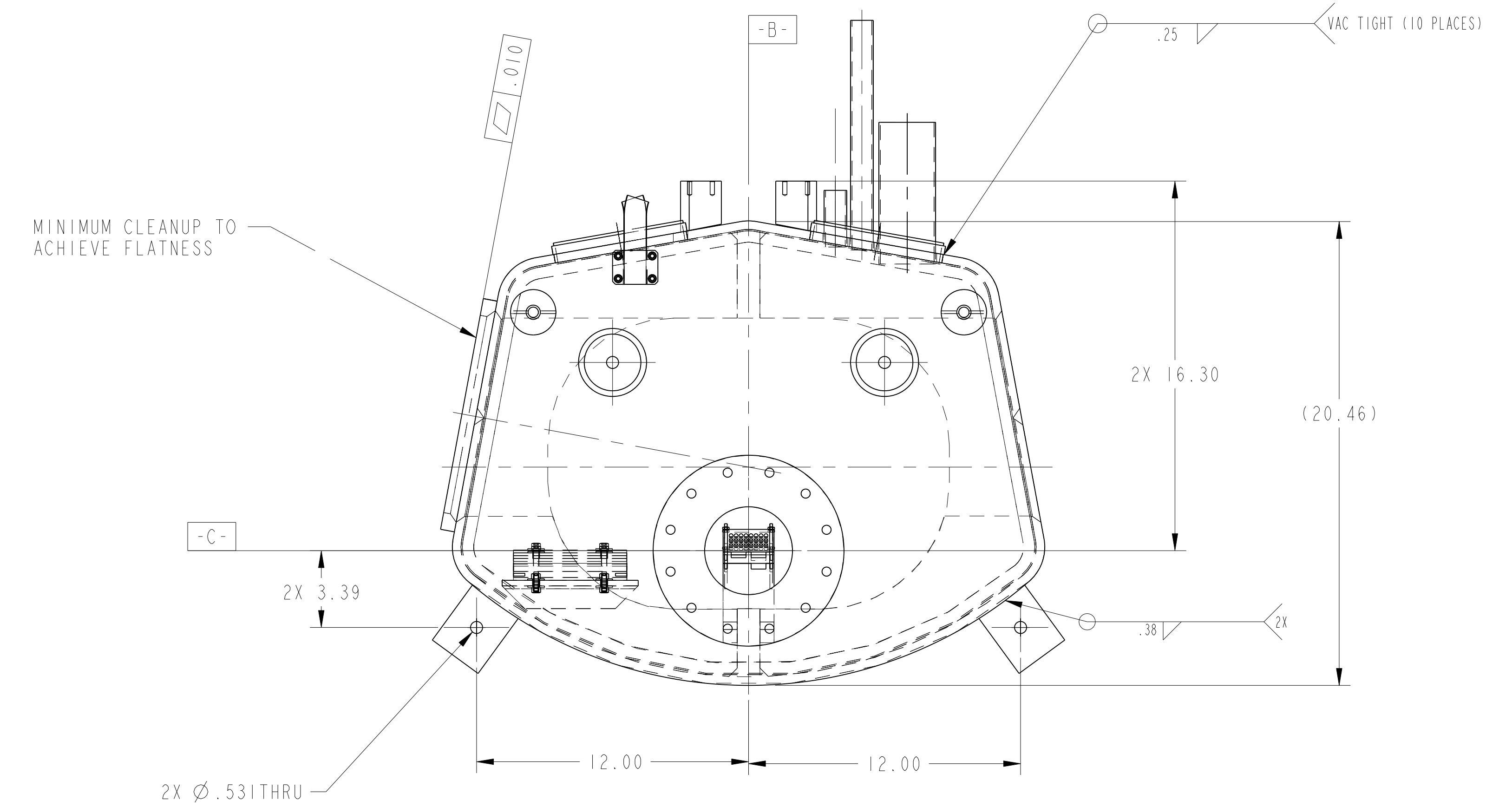
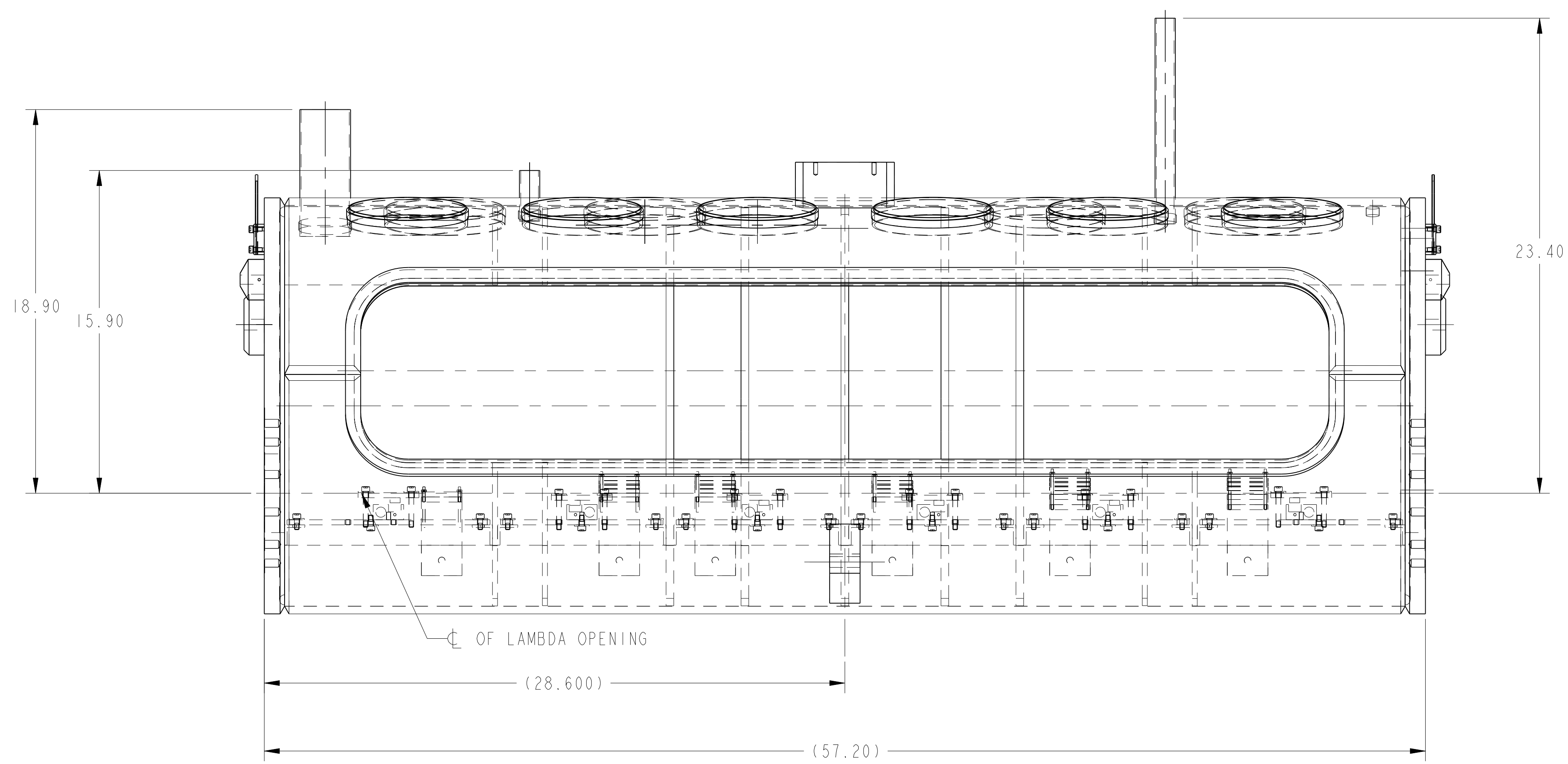
NAME: ARHARRIS OBJECT: 251116.3 DATE: 04-Dec-02 10:38:57

8 7 6 5 4 3 2 1

251116 B 3



FINAL WELDMENT & ASSEMBLY STAGE



THIRD ANGLE PROJECTION

<b>ERNEST ORLANDO LAWRENCE</b> <b>BERKELEY NATIONAL LABORATORY</b> UNIVERSITY OF CALIFORNIA - BERKELEY			
LHC IR FEEDBOX CRYOGENICS LIQUID HELIUM TANK - 10 PORT			
MICROFILMED:	DWG. TYPE:	SCALE:	DWG. NO.:
	ASSEM	1/4	251116
PATENT CLEAR:	DESIGN ACES. NO.:	CATEGORY CODE:	REV.:
	Z5LCE2	LH2003	4
SHEET 4 OF 4 251116			B