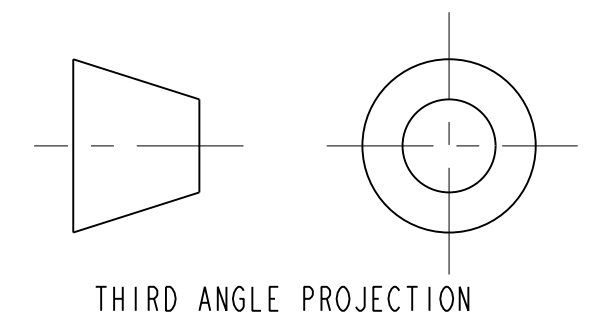


NOTES: (UNLESS OTHERWISE SPECIFIED)

1. THIS IS A CRYOGENIC VACUUM COMPONENT.
2. WELDING PROCEDURE: PER VENDOR SPECIFICATION WITH LBNL APPROVAL.
3. CLEANING PROCEDURE : PER VENDOR SPECIFICATION WITH LBNL APPROVAL.
4. PACKAGING AND STORAGE PROCEDURE OF THE COMPONENTS: PER VENDOR SPECIFICATION WITH LBNL APPROVAL.
5. DIMENSIONS AND TOLERANCING PER ANSI Y14.5M-1982. UNITS ARE IN INCHES [mm] UNLESS OTHERWISE SPECIFIED.
6. USE OF SULFUR OR SILICONE BEARING OILS, LUBRICANTS, OR COOLANTS ARE STRICTLY PROHIBITED.
7. USE OF RESIN OR RUBBER BONDED ABRASIVES UNDER POWER IS STRICTLY PROHIBITED. USE VITREOUS BONDED ABRASIVES ONLY.
8. TIN NOTED AREAS WITH 60/40 Sn/Pb SOLDER, USE RESIN FLUX.



REV	DWG	CHK	ZONE	DATE	CHANGES
C	ARH	SPV		11/25/02	UPDATED DRAWING PER CHECKER MARK-UP
B	JDR	DPO		11/25/02	CHANGED PRE-TINNED AREA, MOVED CHECK VALVE PORT
A	ARH	DPO		11/19/02	INITIAL RELEASE

ITEM	PART NO	QTY	RECD	DATE	DESCRIPTION	MATERIAL
3	-	27	-	-	MS CAPTIVE NUT, PEM-AC-MS-1-SF	SS
2	-	1	-	-	SHEET, .125 THICK	COPPER, OFHC, C101

UNLESS OTHERWISE SPECIFIED	SHOP ORDERS	SET	DATE	DESCRIPTION
TOLERANCES	NO	-	-	-
FRACTIONS	NO	-	-	-
DECIMALS	NO	-	-	-
ANGLES	NO	-	-	-
FINISH	NO	-	-	-
DO NOT SCALE PRINT	NO	-	-	-
CHAMFER ENDS OF ALL SCREW THREADS 30°	NO	-	-	-
BREAK EDGES .125 MAX. ON MACHINED WORK	NO	-	-	-
REMOVE BURRS, WELD SPATTER & LOOSE SCALE	NO	-	-	-
IN ACCORDANCE WITH ASME Y14.3M & B.01	NO	-	-	-

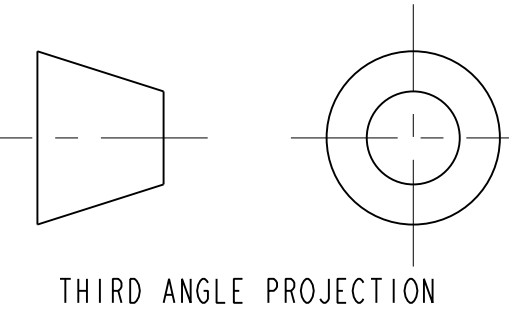
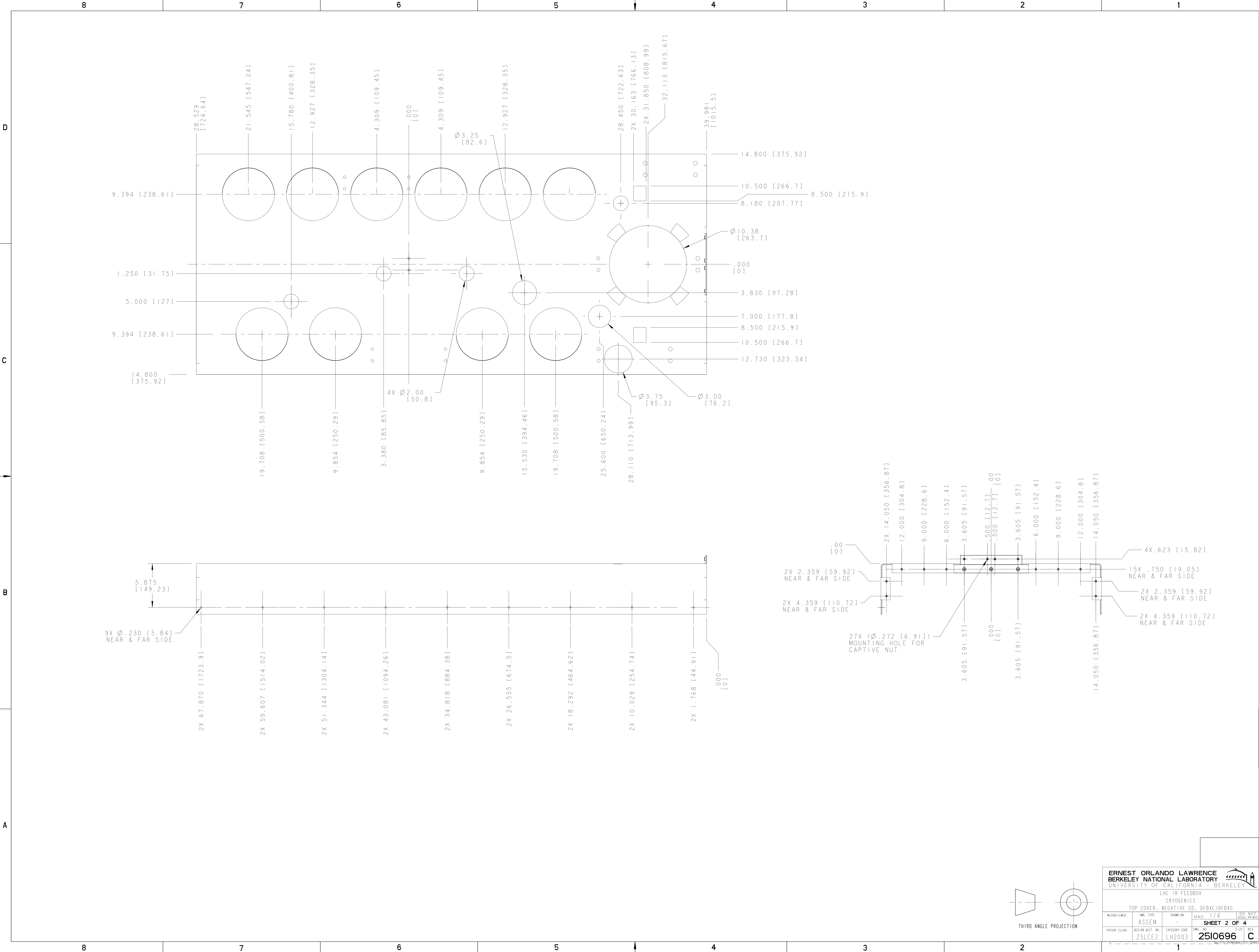
  

ERNEST ORLANDO LAWRENCE	UNIVERSITY OF CALIFORNIA	BERKELEY
LHC IR FEEDBOX CRYOGENICS		
TOP COVER, NEGATIVE SD, DFBXC/DFBXG		
DATE: 18-Feb-02	SCALE: 1/4	DO NOT SCALE PRINTS
DATE: 13-AUG-02	ASSEM	SIZE: 4
DATE: 13-AUG-02	REVISION: Z5LCE2	REV: 4
DATE: 13-AUG-02	CATEGORY CODE: LH2003	DWG. NO: 2510696
<b>SHEET 1 OF 4</b>		

NAME: ARHARRIS OBJECT: 2510696\_1 DATE: 25-Nov-02 11:31:03

2510696 C 1

NAME: ARHARRIS OBJECT: 2510696.2 DATE: 25-Nov-02 11:31:05



**ERNEST ORLANDO LAWRENCE**  
**BERKELEY NATIONAL LABORATORY**  
 UNIVERSITY OF CALIFORNIA BERKELEY

LHC IR FEEDBOX  
 CRYOGENICS

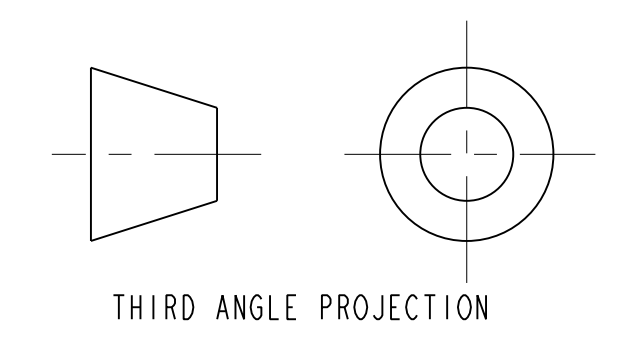
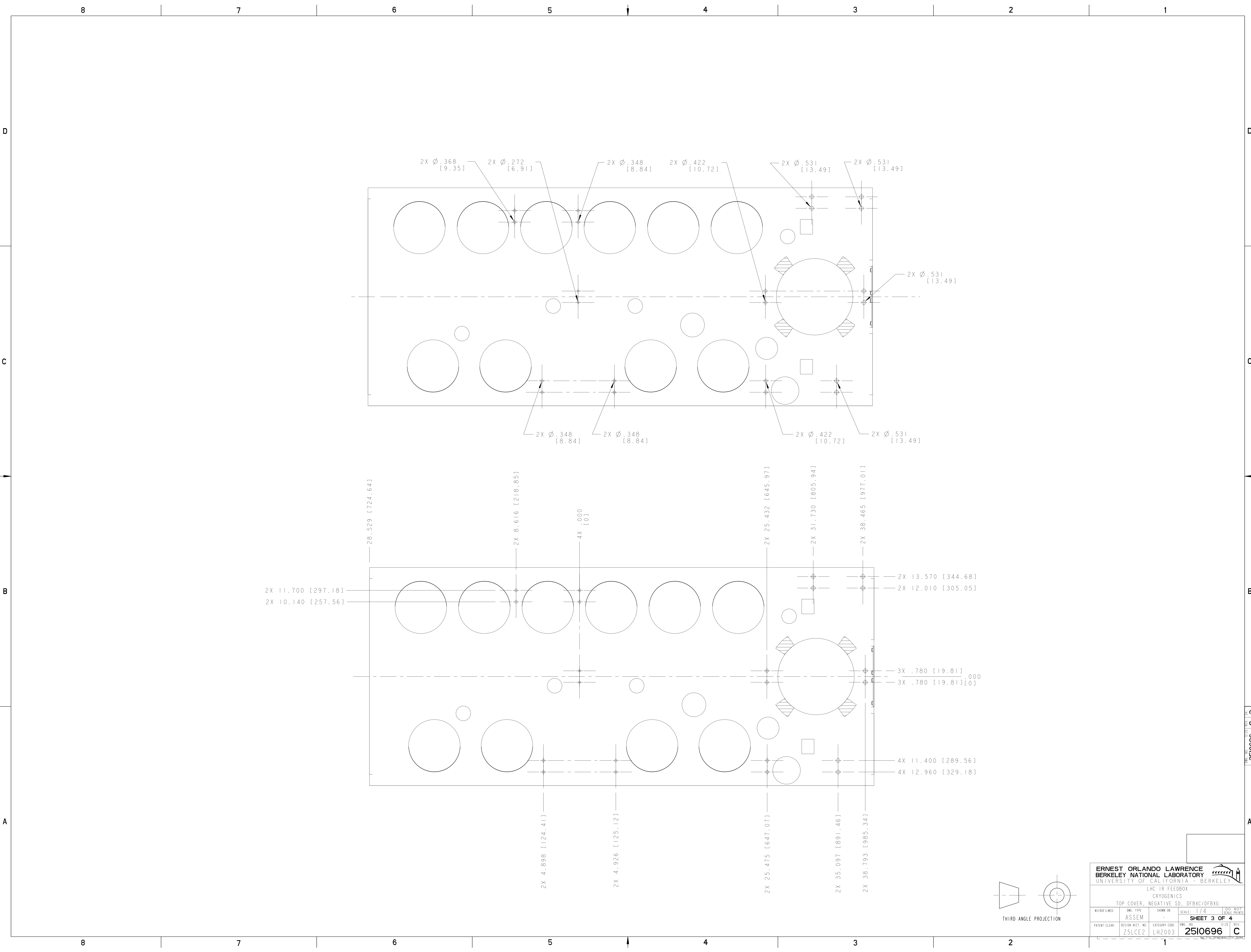
TOP COVER, NEGATIVE SD, DFBXC/DFBXG

MICROFILMED:	DWG. TYPE:	SHOW ON:	SCALE:	DO NOT CHECK PRINTS
	ASSEM		1/4	
PATENT CLEAR:	DESIGN ACCT. NO:	CATEGORY CODE:	DWG. NO.:	REV.:
	Z5LCE2	LH2003	2510696	C

SHEET 2 OF 4

2510696 C 2

NAME: ARHARRIS OBJECT: 251069\_3 DATE: 25-Nov-02 11:31:07



2510696 C 3

8

7

6

5

4

3

2

1

D

C

B

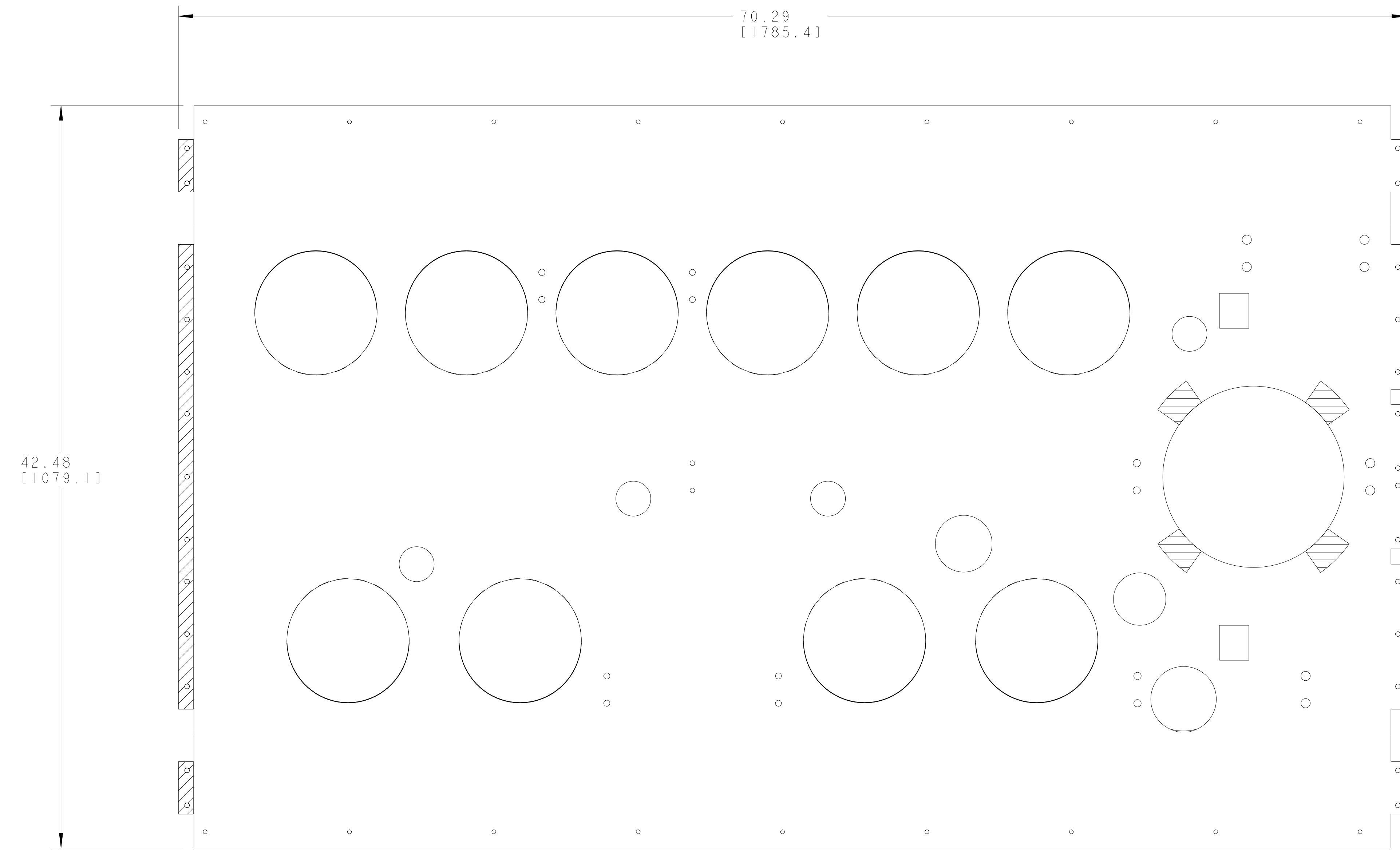
A

D

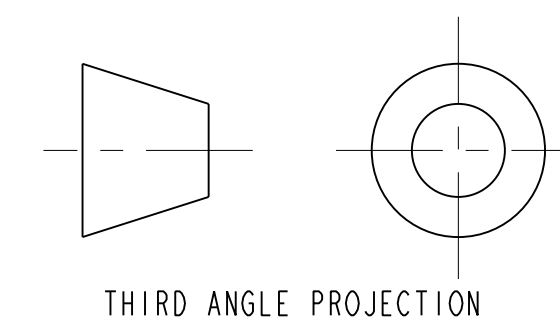
C

B

A



**FLAT PATTERN  
SCALE 1/4**



<b>ERNEST ORLANDO LAWRENCE</b> BERKELEY NATIONAL LABORATORY UNIVERSITY OF CALIFORNIA BERKELEY			
LHC IR FEEDBOX CRYOGENICS			
TOP COVER, NEGATIVE SD, DFBXC/DFBXG			
MICROFILMED:	DWG. TYPE:	SHOW ON:	SCALE: 1/4
	ASSEM		
PATENT CLEAR:	DESIGN ACCT. NO:	CATEGORY CODE:	DWG. NO.:
	Z5LCE2	LH2003	2510696
			SIZE: REV.:
			C

2510696 C 4

2510696 C

8

7

6

5

4

3

2

1

NAME: ARHARRIS OBJECT: 2510696\_4 DATE: 25-Nov-02 11:31:08